

MARTHA L. VANDERWOLK
PARCELS

1A 0.22A±
1B 0.07A±
TOTAL 0.29A±

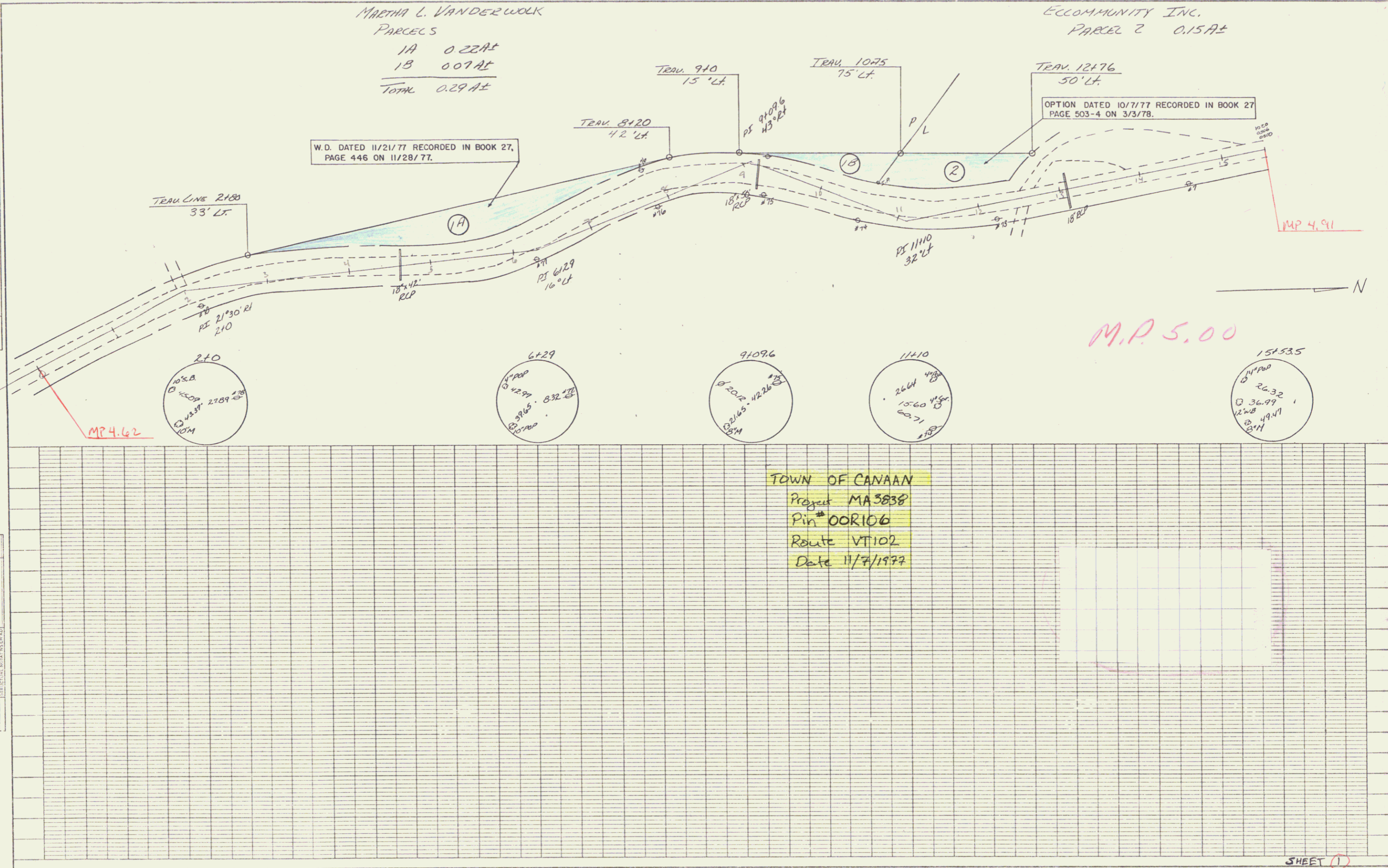
ECCOMMUNITY INC.
PARCEL 2 0.15A±

W.D. DATED 11/21/77 RECORDED IN BOOK 27,
PAGE 446 ON 11/28/77.

OPTION DATED 10/7/77 RECORDED IN BOOK 27
PAGE 503-4 ON 3/3/78.

DATE	
BY	
PLAN	
REVISIONS	
NO.	
DATE	
BY	
DESCRIPTION	
DATE	
BY	
DESCRIPTION	

DATE	
BY	
PROFILE	
REVISIONS	
NO.	
DATE	
BY	
DESCRIPTION	
DATE	
BY	
DESCRIPTION	



TOWN OF CANAAN
Project MA 3838
Pin # OOR106
Route VT102
Date 11/7/1977

SHEET 1

CANAAN R/E 102

MARtha L. VANDERWOLK TO St. OF VT BY WD ON 11/21/77
IN BK 27/446

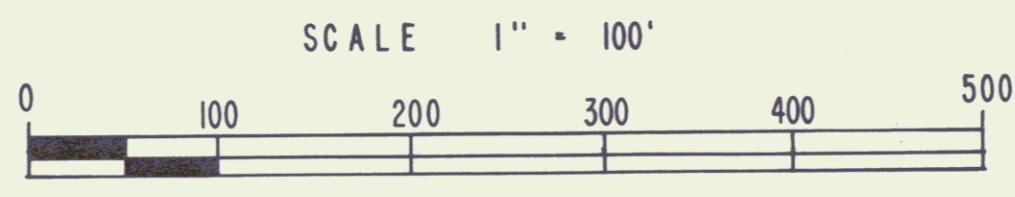
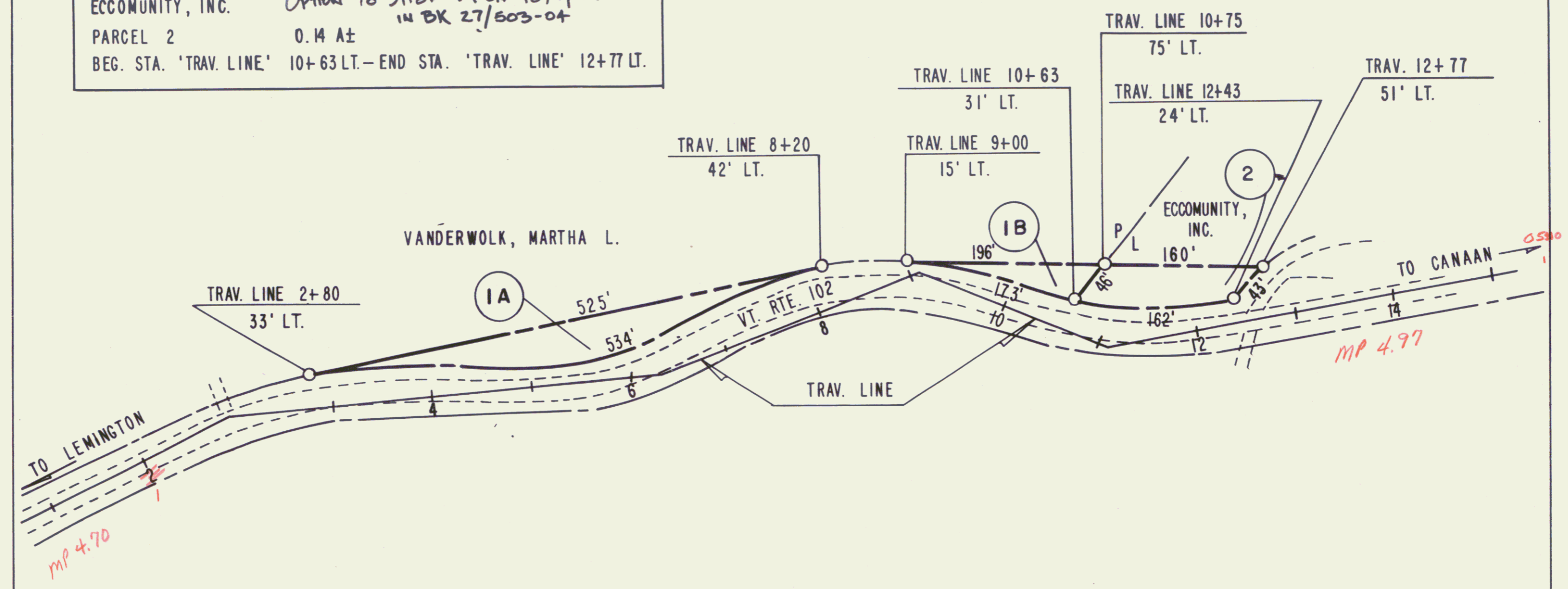
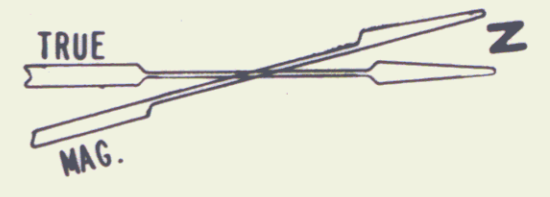
PARCEL IA 0.26 A±
BEG. STA. 'TRAV. LINE' 2+80 LT. — END STA. 'TRAV. LINE' 8+20 LT.

PARCEL IB 0.07 A±
BEG. STA. 'TRAV. LINE' 9+00 LT. — END STA. 'TRAV. LINE' 8+20 LT.

MP 0478

ECCOMUNITY, INC. OPTION TO St. OF VT ON 10/7/77
IN BK 27/503-04

PARCEL 2 0.14 A±
BEG. STA. 'TRAV. LINE' 10+63 LT. — END STA. 'TRAV. LINE' 12+77 LT.



STATE OF VERMONT DEPT. OF HIGHWAYS			
TOWN OF CANAAN			SHEET (1A)
PROJECT CANAAN MA 3838			2
APPROX. SCALE 1" = 100'	DATE 11-7-77	DRAWN BY KDP	