

**INDEX OF SHEETS**

1	TITLE PAGE
2	TYPICAL CROSS-SECTION OF IMPROVEMENT (1 1/2" Bit. Conc. Pavement, Item 381-B (Top Course Only)
3	QUANTITY SHEET (ITEMS)
4	QUANTITY SHEET (DRAINAGE)
5-7	EARTHWORK SHEETS
8	STANDARD SHEET A-61 (SLOPE FOR SOLID ROCK EXCAV.)
9	STANDARD SHEET B-1 (PARKING TAGLES)
10	STANDARD SHEET B-5 (TYPICAL SLOPE)
11	STANDARD SHEET B-6 (TRUCK EXCAVATION)
12	STANDARD SHEET C-1 (PRECAST REINF. CONC. DROP INLETS)
13	STANDARD SHEET C-2 (HEADWALLS & UNDERDRAIN)
14	STANDARD SHEET C-3 (TREATED CUTTERS)
15	STANDARD SHEET C-4 (FLUSHING BASINS)
16	STANDARD SHEET D-8 (REINF. CONC. DROP INLETS)
17	STANDARD SHEET E-1 (BARRICADES, SIGNS & LIGHTS)
18	STANDARD SHEET E-3 (IDENTIFICATION SIGNS)
19	STANDARD SHEET G-2A (TWO CABLE GUARD RAIL)
20	STANDARD SHEET G-4 (GUIDE & MARKER POSTS)
21	STANDARD SHEET J-1 (MARKERS)
22	NEW DETAIL
23-31	PLAN AND PROFILE SHEETS
32-54	CROSS SECTIONS
55-56	CHAMBER SECTIONS
57	APPROACH SECTIONS
53-60	CURVE BANKING TRANSITION DIAGRAMS
11-A	STANDARD SHEET B-10 (EMBANKMENT ON A SLOPE)
11-B	STANDARD SHEET B-11 (USE OF UNDERDRAIN WITH SHATTERED ROCK SUBGRADE)
11-C	SHEETS ADDED IN FINALS
11-D	FINAL EARTHWORK SHEETS

**PROJECT NAME & NUMBER TYPE OF PAVEMENT**  
 LEMINGTON S 0271 32,171 sq yds. BIT CONC PAV

**RECORD PLANS MATERIALS:**  
 SURF BASE GRAVEL-NELSON HOLBROOK PIT, LEMINGTON, VERMONT  
 GRAVEL BACKFILL-RODIOND GORMAN PIT, LEMINGTON, VERMONT  
 CUT BACK ASPHALT-MOBIL OIL CO. ALBANY, N.Y. & PROVIDENCE, R.I.  
 HOT CONC.-L.M. PIKE & SON WATERFORD, VERMONT  
 METAL CULVERT PIPE-NEW ENGLAND METAL CULVERT CORP  
 WHITE RIVER JCT., VERMONT  
 REINF. CONC. PIPE, TWO CABLE GU. RAILS W/ANCHORS, GUIDE POSTS,  
 WOODMARKER POSTS, BOUNDARY MARKER, PROJECT MARKERS, TREATED  
 TIMBERS, AND PRECAST RCDI'S - S.T. URISWOLD & CO. INC.  
 WILLISTON, VERMONT  
 SEED & FERT.-E.T. B.N.K. IDE INC. ST. JOHNSBURY, VERMONT  
 CONTRACTOR-LEO & ROLAND LAPERLE-ST. JOHNSBURY, VERMONT  
 RES. ENG: FRANK B. GANSBY  
 INSPECTORS-JAMES FOREST & DAVID LUND  
 RECORD PLANS: FRANK B. GANSBY

**CONTRACT:** DATED 4 MAY 1965 BEGAN 17 MAY 1965  
 COMPLETED 1 JULY 1966 ACCEPTED 7 JULY 1966

**STATE OF VERMONT  
 DEPARTMENT OF HIGHWAYS**

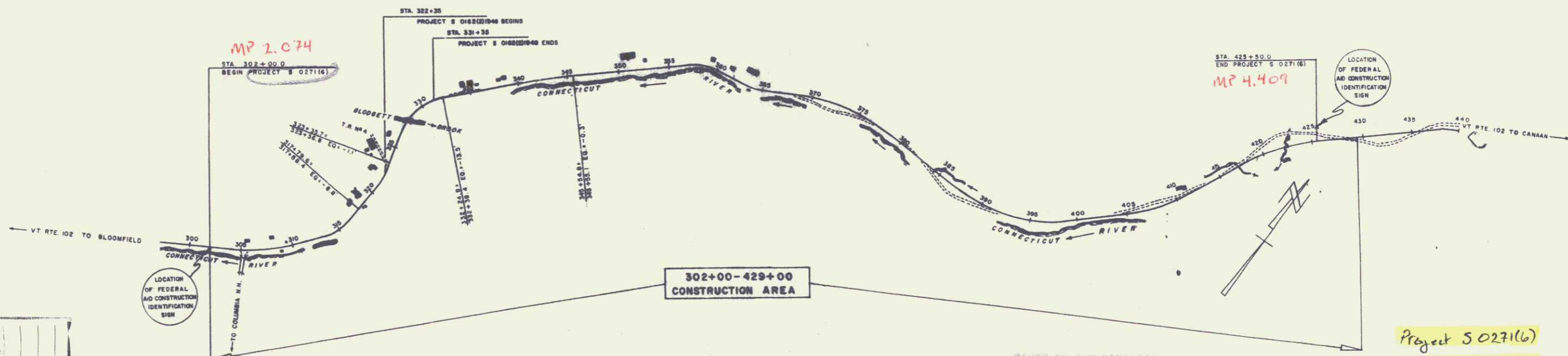
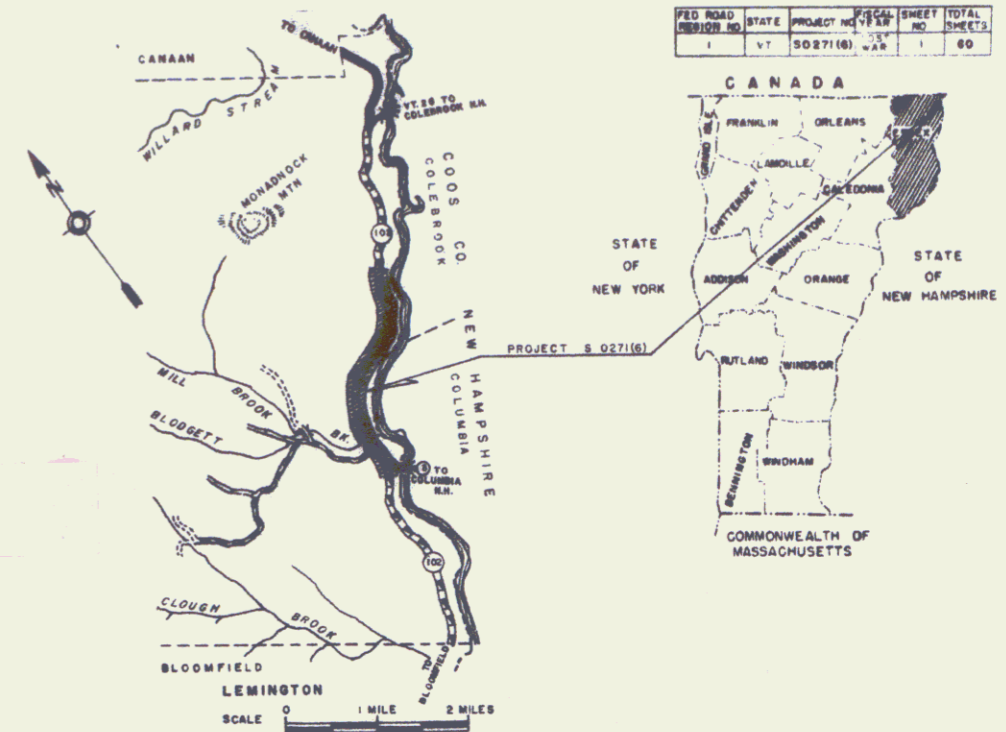
**PROPOSED IMPROVEMENT**

FEDERAL AID SECONDARY PROJECT

**TOWN OF LEMINGTON  
 COUNTY OF ESSEX**

**VERMONT ROUTE #102  
 BLOOMFIELD - CANAAN ROAD**

BEGINNING AT A POINT APPROXIMATELY 2.1 MILES NORTHERLY  
 OF THE LEMINGTON - BLOOMFIELD TOWN LINE AND EXTENDING  
 NORTHERLY 2.355 MILES.  
 LENGTH OF PROJECT = 12,366.3 FEET = 2.335 MILES



*map for  
 S 0271 (a)  
 see file card*

BR	BR
FRANK B. GANSBY	FRANK B. GANSBY
LEO & ROLAND LAPERLE - ST. JOHNSBURY	LEO & ROLAND LAPERLE - ST. JOHNSBURY
0271 BR	0271 BR
JULY 1966	JULY 1966



1964 ADT = 120  
 1965 ADT = 220  
 1966 ADT = 50  
 D = 6.5%  
 T = 7%  
 V = 40 M.P.H.

RIGHT-OF-WAY DIVISION  
 ROW FILE  
 PERPETUAL  
 Date of 4/10/66  
 (To Be Returned To R.O.W. Division)

BENCH MARK DATA FROM U.S.G.S. ELEVATION

NOTE: ALL BENCH MARKS SHOWN ON THESE PLANS ARE TO BE USED AS CHECKED BY THE FIELD ENGINEER.

THESE PLANS ARE SUBJECT TO SUCH REVISIONS AS MAY BE  
 REQUIRED BY THE BUREAU OF PUBLIC ROADS OR THE COMMISSIONER  
 OF HIGHWAYS.

CONSTRUCTION IS TO BE CARRIED ON IN ACCORDANCE WITH  
 THESE PLANS AND THE STANDARD SPECIFICATIONS FOR HIGHWAY AND BRIDGE  
 CONSTRUCTION, DATED APRIL 1964, AS APPROVED BY THE BUREAU OF  
 PUBLIC ROADS ON OCTOBER 12, 1964, INCLUDING ALL SUBSEQUENT  
 APPROVED REVISIONS AND SUCH REVISED SPECIFICATIONS AND SPECIAL  
 PROVISIONS AS MAY BE REQUIRED.

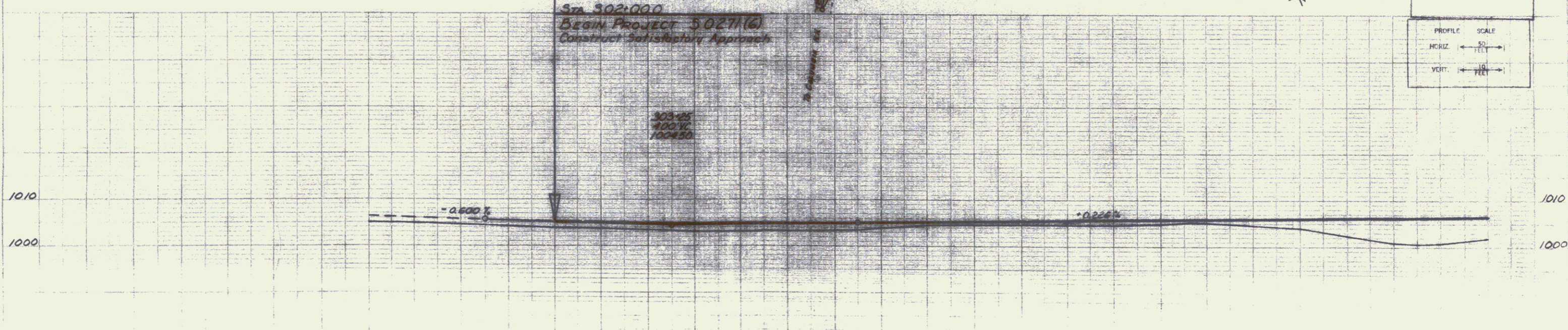
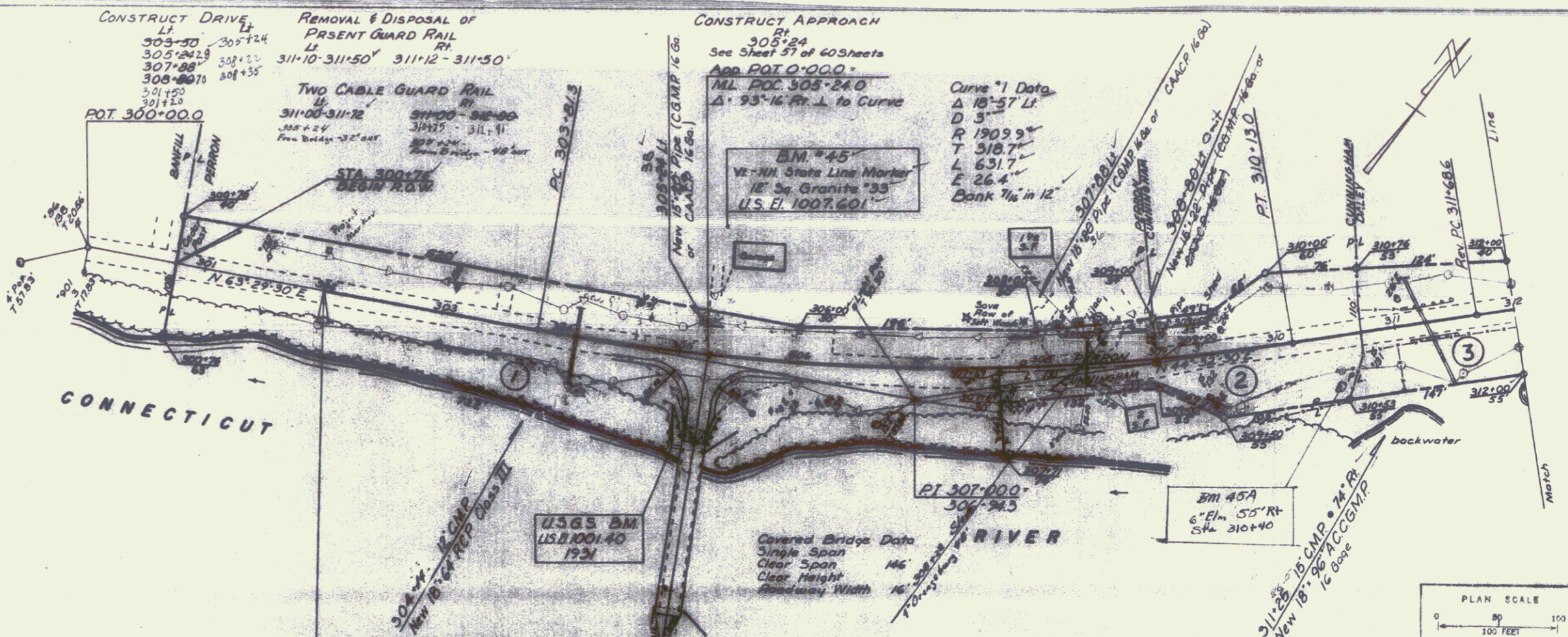
DEPARTMENT OF COMMERCE  
 BUREAU OF PUBLIC ROADS

APPROVED

SHEET 1

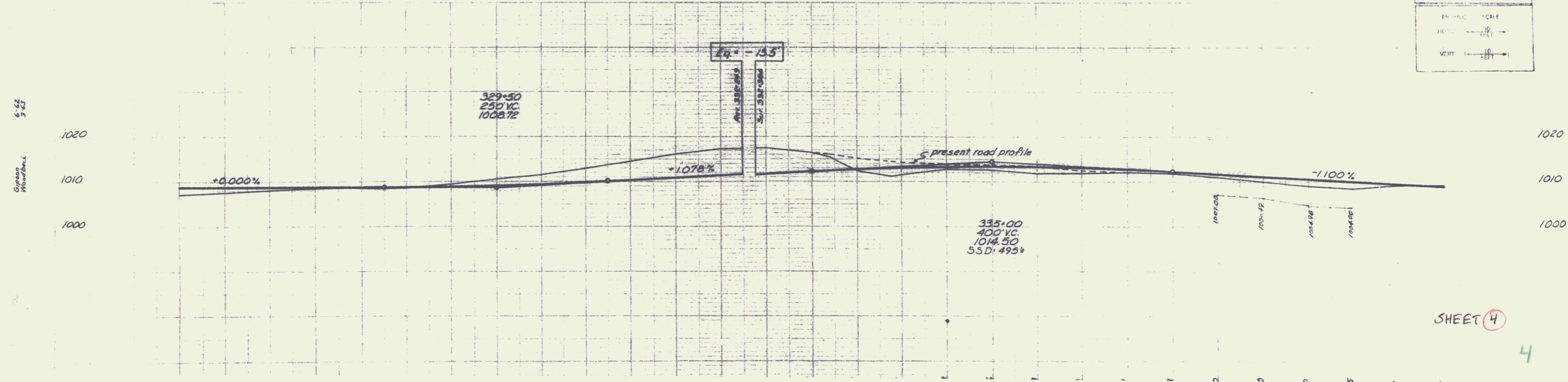
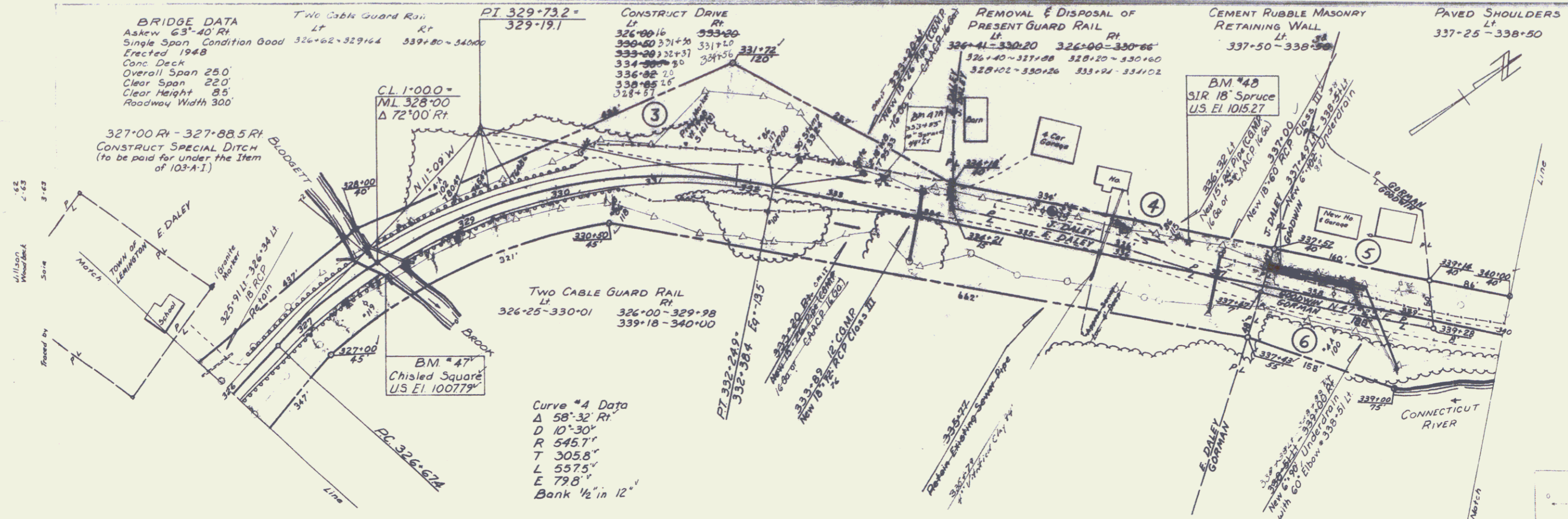
1-45  
 2-45  
 3-45  
 4-45  
 5-45  
 6-45  
 7-45  
 8-45  
 9-45  
 10-45  
 11-45  
 12-45  
 13-45  
 14-45  
 15-45  
 16-45  
 17-45  
 18-45  
 19-45  
 20-45  
 21-45  
 22-45  
 23-45  
 24-45  
 25-45  
 26-45  
 27-45  
 28-45  
 29-45  
 30-45  
 31-45  
 32-45  
 33-45  
 34-45  
 35-45  
 36-45  
 37-45  
 38-45  
 39-45  
 40-45  
 41-45  
 42-45  
 43-45  
 44-45  
 45-45  
 46-45  
 47-45  
 48-45  
 49-45  
 50-45  
 51-45  
 52-45  
 53-45  
 54-45  
 55-45  
 56-45  
 57-45  
 58-45  
 59-45  
 60-45  
 61-45  
 62-45  
 63-45  
 64-45  
 65-45  
 66-45  
 67-45  
 68-45  
 69-45  
 70-45  
 71-45  
 72-45  
 73-45  
 74-45  
 75-45  
 76-45  
 77-45  
 78-45  
 79-45  
 80-45  
 81-45  
 82-45  
 83-45  
 84-45  
 85-45  
 86-45  
 87-45  
 88-45  
 89-45  
 90-45  
 91-45  
 92-45  
 93-45  
 94-45  
 95-45  
 96-45  
 97-45  
 98-45  
 99-45  
 100-45  
 101-45  
 102-45  
 103-45  
 104-45  
 105-45  
 106-45  
 107-45  
 108-45  
 109-45  
 110-45  
 111-45  
 112-45  
 113-45  
 114-45  
 115-45  
 116-45  
 117-45  
 118-45  
 119-45  
 120-45  
 121-45  
 122-45  
 123-45  
 124-45  
 125-45  
 126-45  
 127-45  
 128-45  
 129-45  
 130-45  
 131-45  
 132-45  
 133-45  
 134-45  
 135-45  
 136-45  
 137-45  
 138-45  
 139-45  
 140-45  
 141-45  
 142-45  
 143-45  
 144-45  
 145-45  
 146-45  
 147-45  
 148-45  
 149-45  
 150-45  
 151-45  
 152-45  
 153-45  
 154-45  
 155-45  
 156-45  
 157-45  
 158-45  
 159-45  
 160-45  
 161-45  
 162-45  
 163-45  
 164-45  
 165-45  
 166-45  
 167-45  
 168-45  
 169-45  
 170-45  
 171-45  
 172-45  
 173-45  
 174-45  
 175-45  
 176-45  
 177-45  
 178-45  
 179-45  
 180-45  
 181-45  
 182-45  
 183-45  
 184-45  
 185-45  
 186-45  
 187-45  
 188-45  
 189-45  
 190-45  
 191-45  
 192-45  
 193-45  
 194-45  
 195-45  
 196-45  
 197-45  
 198-45  
 199-45  
 200-45  
 201-45  
 202-45  
 203-45  
 204-45  
 205-45  
 206-45  
 207-45  
 208-45  
 209-45  
 210-45  
 211-45  
 212-45  
 213-45  
 214-45  
 215-45  
 216-45  
 217-45  
 218-45  
 219-45  
 220-45  
 221-45  
 222-45  
 223-45  
 224-45  
 225-45  
 226-45  
 227-45  
 228-45  
 229-45  
 230-45  
 231-45  
 232-45  
 233-45  
 234-45  
 235-45  
 236-45  
 237-45  
 238-45  
 239-45  
 240-45  
 241-45  
 242-45  
 243-45  
 244-45  
 245-45  
 246-45  
 247-45  
 248-45  
 249-45  
 250-45  
 251-45  
 252-45  
 253-45  
 254-45  
 255-45  
 256-45  
 257-45  
 258-45  
 259-45  
 260-45  
 261-45  
 262-45  
 263-45  
 264-45  
 265-45  
 266-45  
 267-45  
 268-45  
 269-45  
 270-45  
 271-45  
 272-45  
 273-45  
 274-45  
 275-45  
 276-45  
 277-45  
 278-45  
 279-45  
 280-45  
 281-45  
 282-45  
 283-45  
 284-45  
 285-45  
 286-45  
 287-45  
 288-45  
 289-45  
 290-45  
 291-45  
 292-45  
 293-45  
 294-45  
 295-45  
 296-45  
 297-45  
 298-45  
 299-45  
 300-45  
 301-45  
 302-45  
 303-45  
 304-45  
 305-45  
 306-45  
 307-45  
 308-45  
 309-45  
 310-45  
 311-45  
 312-45  
 313-45  
 314-45  
 315-45  
 316-45  
 317-45  
 318-45  
 319-45  
 320-45  
 321-45  
 322-45  
 323-45  
 324-45  
 325-45  
 326-45  
 327-45  
 328-45  
 329-45  
 330-45  
 331-45  
 332-45  
 333-45  
 334-45  
 335-45  
 336-45  
 337-45  
 338-45  
 339-45  
 340-45  
 341-45  
 342-45  
 343-45  
 344-45  
 345-45  
 346-45  
 347-45  
 348-45  
 349-45  
 350-45  
 351-45  
 352-45  
 353-45  
 354-45  
 355-45  
 356-45  
 357-45  
 358-45  
 359-45  
 360-45  
 361-45  
 362-45  
 363-45  
 364-45  
 365-45  
 366-45  
 367-45  
 368-45  
 369-45  
 370-45  
 371-45  
 372-45  
 373-45  
 374-45  
 375-45  
 376-45  
 377-45  
 378-45  
 379-45  
 380-45  
 381-45  
 382-45  
 383-45  
 384-45  
 385-45  
 386-45  
 387-45  
 388-45  
 389-45  
 390-45  
 391-45  
 392-45  
 393-45  
 394-45  
 395-45  
 396-45  
 397-45  
 398-45  
 399-45  
 400-45  
 401-45  
 402-45  
 403-45  
 404-45  
 405-45  
 406-45  
 407-45  
 408-45  
 409-45  
 410-45  
 411-45  
 412-45  
 413-45  
 414-45  
 415-45  
 416-45  
 417-45  
 418-45  
 419-45  
 420-45  
 421-45  
 422-45  
 423-45  
 424-45  
 425-45  
 426-45  
 427-45  
 428-45  
 429-45  
 430-45  
 431-45  
 432-45  
 433-45  
 434-45  
 435-45  
 436-45  
 437-45  
 438-45  
 439-45  
 440-45  
 441-45  
 442-45  
 443-45  
 444-45  
 445-45  
 446-45  
 447-45  
 448-45  
 449-45  
 450-45  
 451-45  
 452-45  
 453-45  
 454-45  
 455-45  
 456-45  
 457-45  
 458-45  
 459-45  
 460-45  
 461-45  
 462-45  
 463-45  
 464-45  
 465-45  
 466-45  
 467-45  
 468-45  
 469-45  
 470-45  
 471-45  
 472-45  
 473-45  
 474-45  
 475-45  
 476-45  
 477-45  
 478-45  
 479-45  
 480-45  
 481-45  
 482-45  
 483-45  
 484-45  
 485-45  
 486-45  
 487-45  
 488-45  
 489-45  
 490-45  
 491-45  
 492-45  
 493-45  
 494-45  
 495-45  
 496-45  
 497-45  
 498-45  
 499-45  
 500-45  
 501-45  
 502-45  
 503-45  
 504-45  
 505-45  
 506-45  
 507-45  
 508-45  
 509-45  
 510-45  
 511-45  
 512-45  
 513-45  
 514-45  
 515-45  
 516-45  
 517-45  
 518-45  
 519-45  
 520-45  
 521-45  
 522-45  
 523-45  
 524-45  
 525-45  
 526-45  
 527-45  
 528-45  
 529-45  
 530-45  
 531-45  
 532-45  
 533-45  
 534-45  
 535-45  
 536-45  
 537-45  
 538-45  
 539-45  
 540-45  
 541-45  
 542-45  
 543-45  
 544-45  
 545-45  
 546-45  
 547-45  
 548-45  
 549-45  
 550-45  
 551-45  
 552-45  
 553-45  
 554-45  
 555-45  
 556-45  
 557-45  
 558-45  
 559-45  
 560-45  
 561-45  
 562-45  
 563-45  
 564-45  
 565-45  
 566-45  
 567-45  
 568-45  
 569-45  
 570-45  
 571-45  
 572-45  
 573-45  
 574-45  
 575-45  
 576-45  
 577-45  
 578-45  
 579-45  
 580-45  
 581-45  
 582-45  
 583-45  
 584-45  
 585-45  
 586-45  
 587-45  
 588-45  
 589-45  
 590-45  
 591-45  
 592-45  
 593-45  
 594-45  
 595-45  
 596-45  
 597-45  
 598-45  
 599-45  
 600-45  
 601-45  
 602-45  
 603-45  
 604-45  
 605-45  
 606-45  
 607-45  
 608-45  
 609-45  
 610-45  
 611-45  
 612-45  
 613-45  
 614-45  
 615-45  
 616-45  
 617-45  
 618-45  
 619-45  
 620-45  
 621-45  
 622-45  
 623-45  
 624-45  
 625-45  
 626-45  
 627-45  
 628-45  
 629-45  
 630-45  
 631-45  
 632-45  
 633-45  
 634-45  
 635-45  
 636-45  
 637-45  
 638-45  
 639-45  
 640-45  
 641-45  
 642-45  
 643-45  
 644-45  
 645-45  
 646-45  
 647-45  
 648-45  
 649-45  
 650-45  
 651-45  
 652-45  
 653-45  
 654-45  
 655-45  
 656-45  
 657-45  
 658-45  
 659-45  
 660-45  
 661-45  
 662-45  
 663-45  
 664-45  
 665-45  
 666-45  
 667-45  
 668-45  
 669-45  
 670-45  
 671-45  
 672-45  
 673-45  
 674-45  
 675-45  
 676-45  
 677-45  
 678-45  
 679-45  
 680-45  
 681-45  
 682-45  
 683-45  
 684-45  
 685-45  
 686-45  
 687-45  
 688-45  
 689-45  
 690-45  
 691-45  
 692-45  
 693-45  
 694-45  
 695-45  
 696-45  
 697-45  
 698-45  
 699-45  
 700-45  
 701-45  
 702-45  
 703-45  
 704-45  
 705-45  
 706-45  
 707-45  
 708-45  
 709-45  
 710-45  
 711-45  
 712-45  
 713-45  
 714-45  
 715-45  
 716-45  
 717-45  
 718-45  
 719-45  
 720-45  
 721-45  
 722-45  
 723-45  
 724-45  
 725-45  
 726-45  
 727-45  
 728-45  
 729-45  
 730-45  
 731-45  
 732-45  
 733-45  
 734-45  
 735-45  
 736-45  
 737-45  
 738-45  
 739-45  
 740-45  
 741-45  
 742-45  
 743-45  
 744-45  
 745-45  
 746-45  
 747-45  
 748-45  
 749-45  
 750-45  
 751-45  
 752-45  
 753-45  
 754-45  
 755-45  
 756-45  
 757-45  
 758-45  
 759-45  
 760-45  
 761-45  
 762-45  
 763-45  
 764-45  
 765-45  
 766-45  
 767-45  
 768-45  
 769-45  
 770-45  
 771-45  
 772-45  
 773-45  
 774-45  
 775-45  
 776-45  
 777-45  
 778-45  
 779-45  
 780-45  
 781-45  
 782-45  
 783-45  
 784-45  
 785-45  
 786-45  
 787-45  
 788-45  
 789-45  
 790-45  
 791-45  
 792-45  
 793-45  
 794-45  
 795-45  
 796-45  
 797-45  
 798-45  
 799-45  
 800-45  
 801-45  
 802-45  
 803-45  
 804-45  
 805-45  
 806-45  
 807-45  
 808-45  
 809-45  
 810-45  
 811-45  
 812-45  
 813-45  
 814-45  
 815-45  
 816-45  
 817-45  
 818-45  
 819-45  
 820-45  
 821-45  
 822-45  
 823-45  
 824-45  
 825-45  
 826-45  
 827-45  
 828-45  
 829-45  
 830-45  
 831-45  
 832-45  
 833-45  
 834-45  
 835-45  
 836-45  
 837-45  
 838-45  
 839-45  
 840-45  
 841-45  
 842-45  
 843-45  
 844-45  
 845-45  
 846-45  
 847-45  
 848-45  
 849-45  
 850-45  
 851-45  
 852-45  
 853-45  
 854-45  
 855-45  
 856-45  
 857-45  
 858-45  
 859-45  
 860-45  
 861-45  
 862-45  
 863-45  
 864-45  
 865-45  
 866-45  
 867-45  
 868-45  
 869-45  
 870-45  
 871-45  
 872-45  
 873-45  
 874-45  
 875-45  
 876-45  
 877-45  
 878-45  
 879-45  
 880-45  
 881-45  
 882-45  
 883-45  
 884-45  
 885-45  
 886-45  
 887-45  
 888-45  
 889-45  
 890-45  
 891-45  
 892-45  
 893-45  
 894-45  
 895-45  
 896-45  
 897-45  
 898-45  
 899-45  
 900-45  
 901-45  
 902-45  
 903-45  
 904-45  
 905-45  
 906-45  
 907-45  
 908-45  
 909-45  
 910-45  
 911-45  
 912-45  
 913-45  
 914-45  
 915-45  
 916-45  
 917-45  
 918-45  
 919-45  
 920-45  
 921-45  
 922-45  
 923-45  
 924-45  
 925-45  
 926-45  
 927-45  
 928-45  
 929-45  
 930-45  
 931-45  
 932-45  
 933-45  
 934-45  
 935-45  
 936-45  
 937-45  
 938-45  
 939-45  
 940-45  
 941-45  
 942-45  
 943-45  
 944-45  
 945-45  
 946-45  
 947-45  
 948-45  
 949-45  
 950-45  
 951-45  
 952-45  
 953-45  
 954-45  
 955-45  
 956-45  
 957-45  
 958-45  
 959-45  
 960-45  
 961-45  
 962-45  
 963-45  
 964-45  
 965-45  
 966-45  
 967-45  
 968-45  
 969-45  
 970-45  
 971-45  
 972-45  
 973-45  
 974-45  
 975-45  
 976-45  
 977-45  
 978-45  
 979-45  
 980-45  
 981-45  
 982-45  
 983-45  
 984-45  
 985-45  
 986-45  
 987-45  
 988-45  
 989-45  
 990-45  
 991-45  
 992-45  
 993-45  
 994-45  
 995-45  
 996-45  
 997-45  
 998-45  
 999-45  
 1000-45

**CONSTRUCTION NOTE**  
 Drives are to be constructed with a minimum width of 12 feet with a minimum 15 foot flare radius.  
 \*Sub-base of Gravel, Item 201 \*Shall be used to Stabilize Cut Slopes as indicated on the plans or as directed by the Engineer.  
 All existing road pavement within 2 feet of subgrade shall be thoroughly scarified and broken up. Payment to be included under the bid price of Common Excavation, Item 103-A1.



PLAN SCALE  
 0 50 100  
 100 FEET  
 PROFILE SCALE  
 HORIZ. 1" = 50'  
 VERT. 1" = 10'





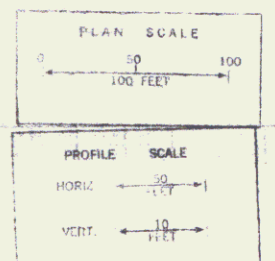
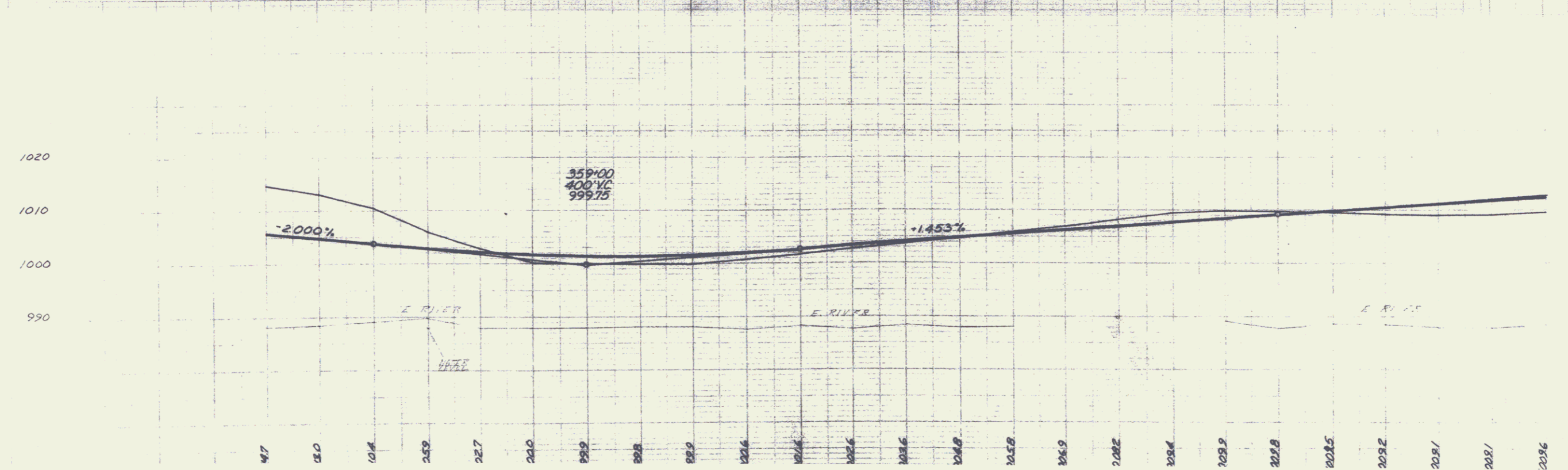
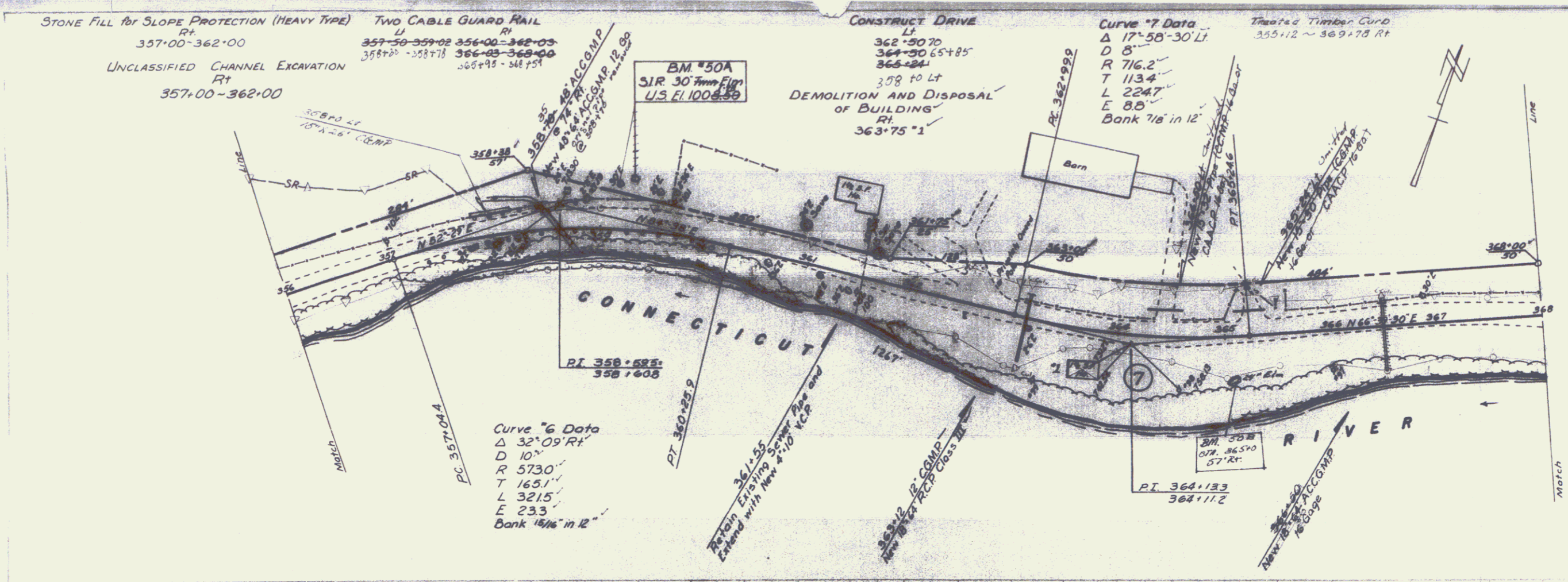
PLAN SCALE	0 50 100 100 FEET
PH. SCALE	1" = 10'
VERT. SCALE	1" = 10'

SHEET 4  
4

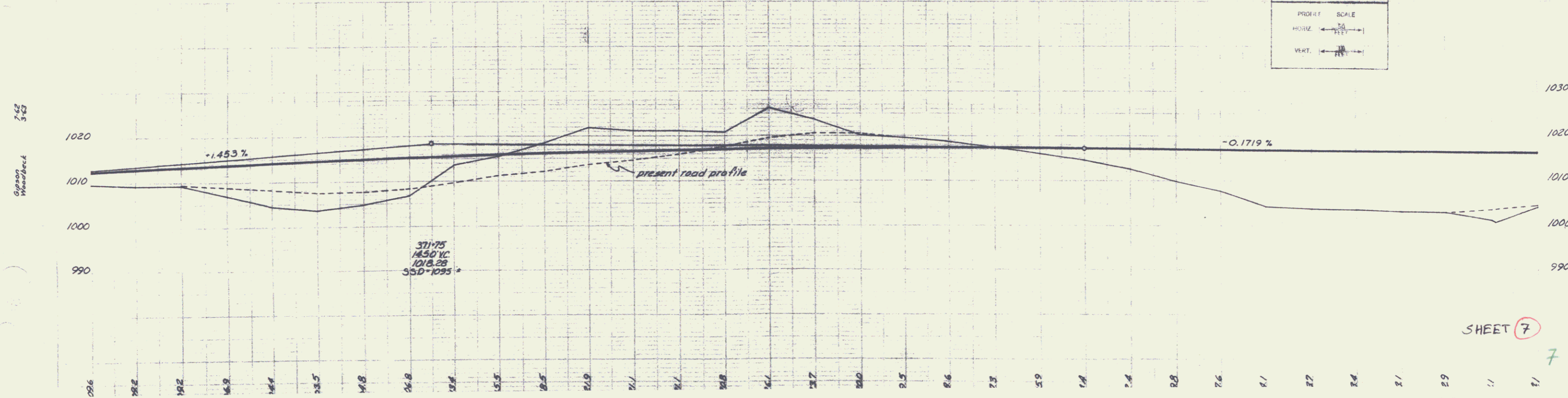
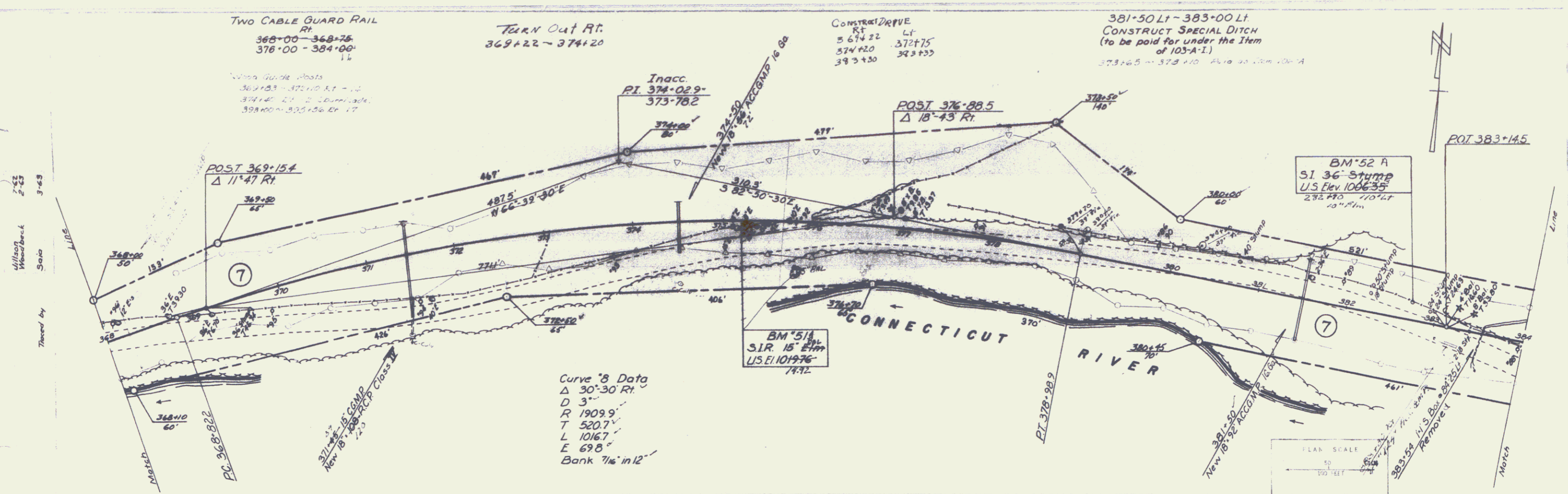


7-45  
2-43  
3-43  
Willson  
Woodbury  
Sain  
Prepared by

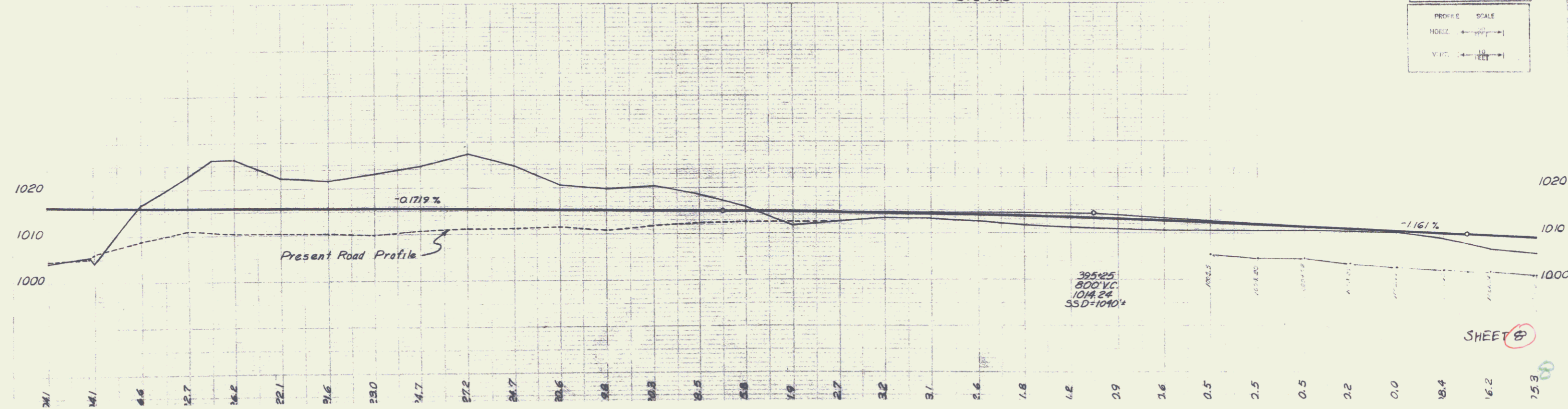
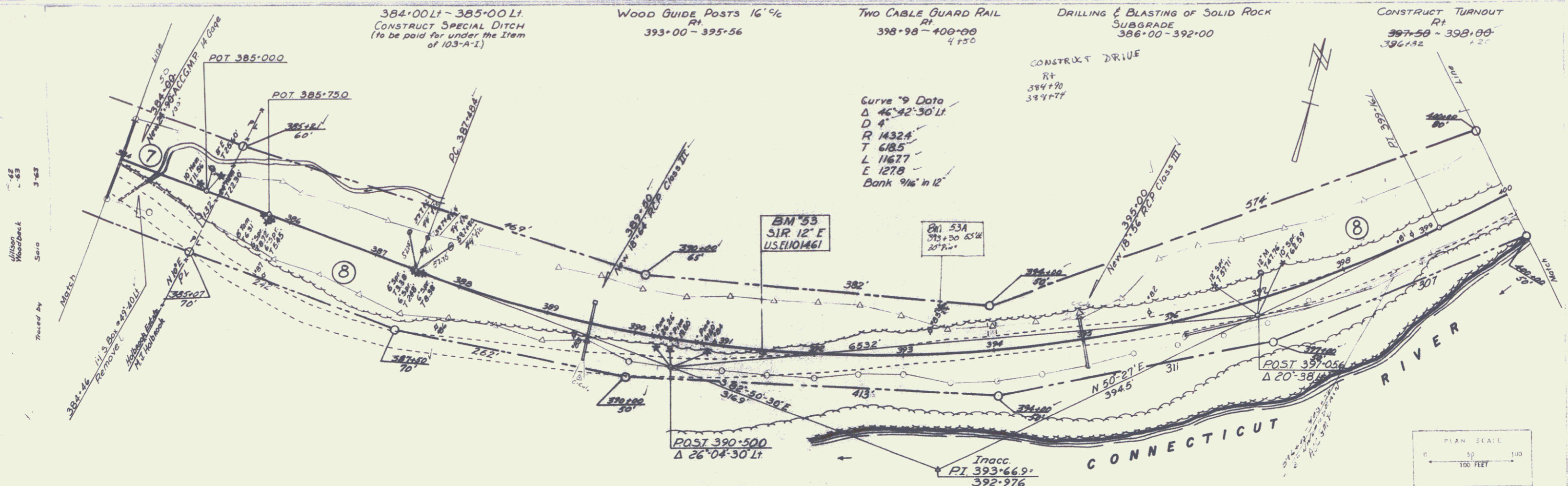
7-45  
5-43  
Gardner  
Woodbury



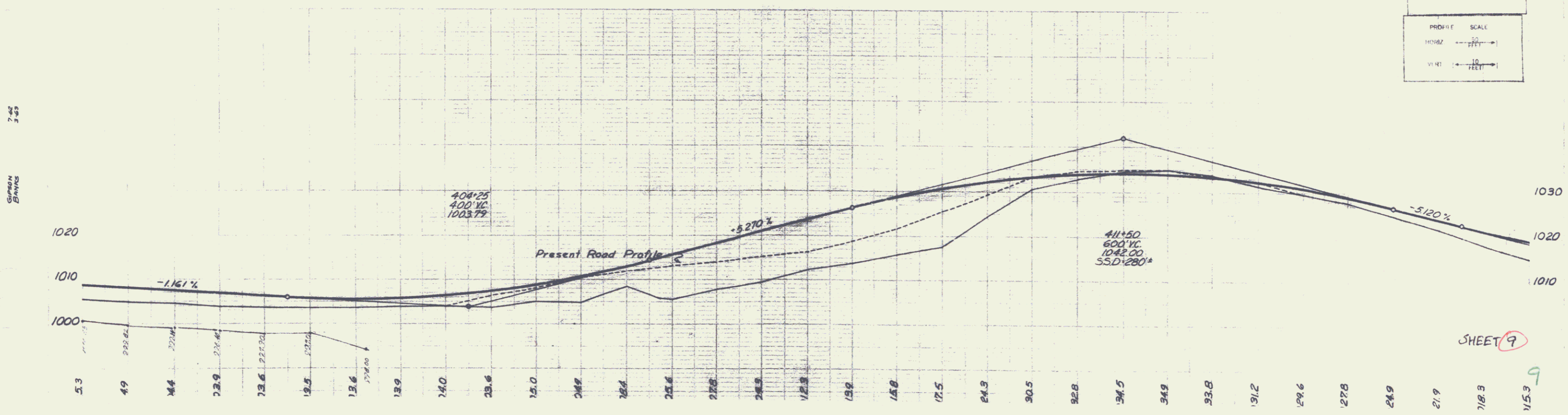
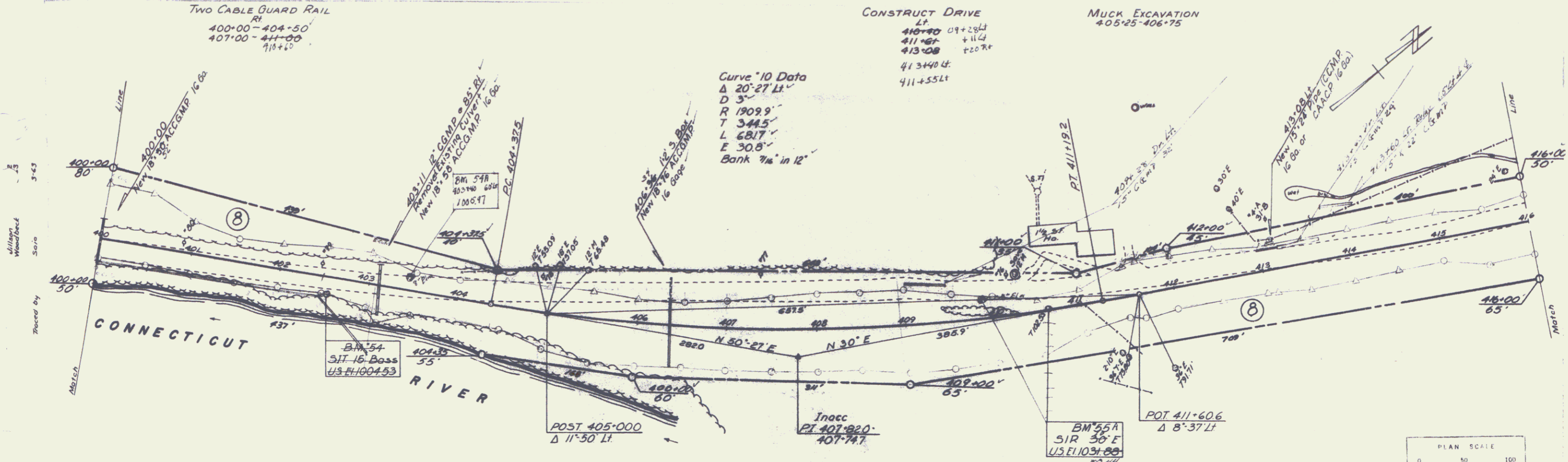
SHEET 6  
6



SHEET 7  
 7

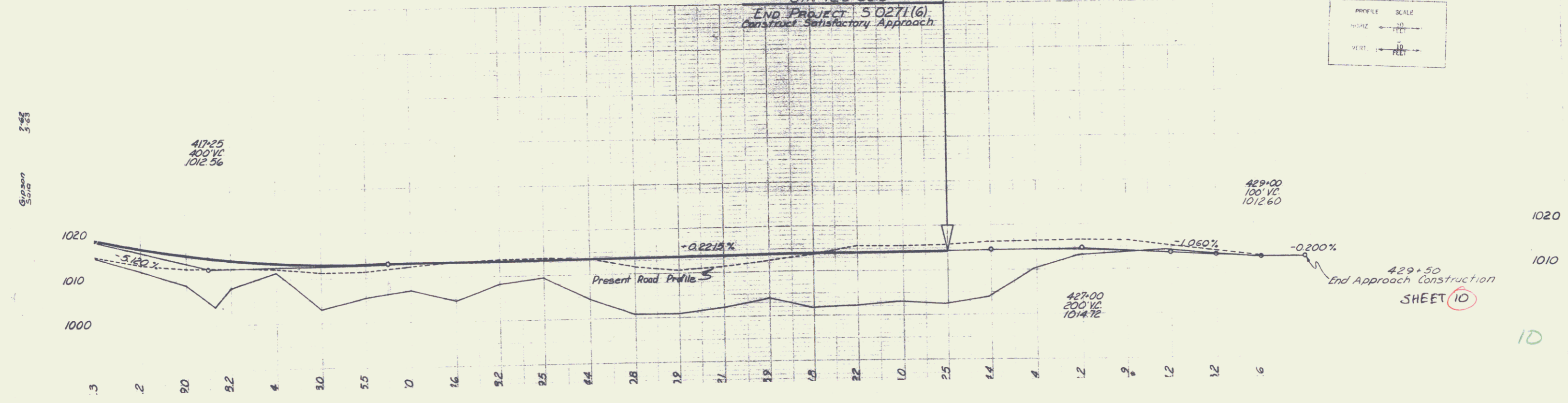
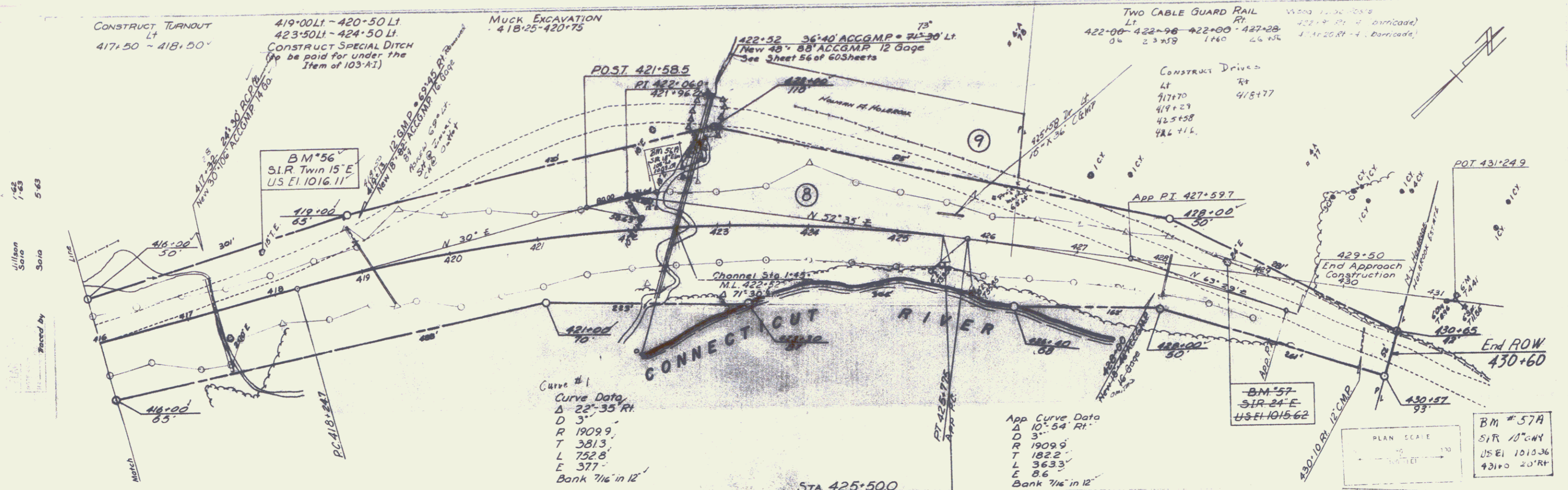


SHEET 8



SHEET 9

9



1-45  
1-45  
Sonia  
Sonia  
5-63  
Placed by

3-68  
Gipson  
Sonia

10