

INDEX OF SHEETS

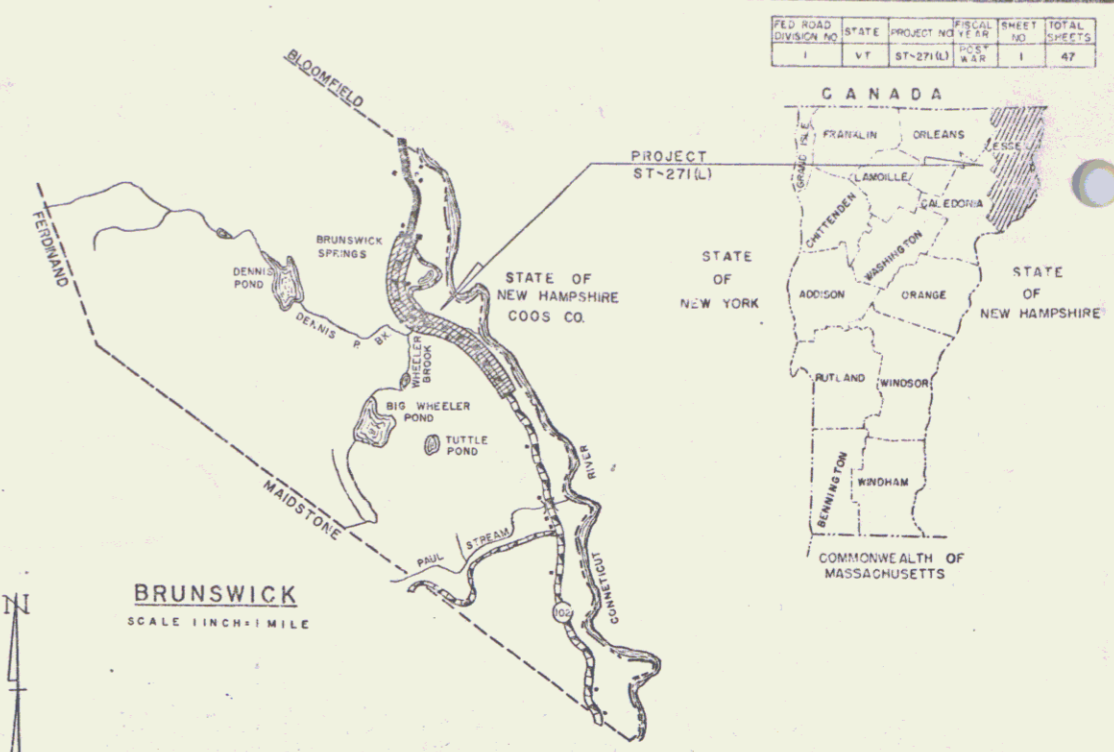
SHEET NO.	TITLE
1	TITLE SHEET
2	TYPICAL CROSS-SECTION OF IMPROVEMENT (SINGLE TRACK COAT OF REFINED TAR AND BLEND MIX)
3	QUANTITY SHEET (DRAINAGE & ITEMS) (PCA STONE SEAL WITH OUTBACK ASPHALT ITEM 317)
4-6	EARTHWORK SHEETS
7-14	PLAN AND PROFILE SHEETS
15-45	CROSS-SECTION SHEETS
46-47	CURVE BANKING TRANSITIONS

(To Be Returned To R.O.W. Division)  
 Town of Brunswick  
 PERPETUAL  
 HIGHWAY FILE  
 HIGHWAY DIVISION

STATE OF VERMONT  
 DEPARTMENT OF HIGHWAYS  
 PROPOSED IMPROVEMENT

TOWN OF BRUNSWICK  
 COUNTY OF ESSEX  
 VT ROUTE # 102

BEGINNING AT A POINT APPROXIMATELY ONE MILE  
 SOUTHERLY OF THE BRUNSWICK-BLOOMFIELD TOWN  
 LINE AND EXTENDING SOUTHERLY 2.232 MILES.  
 LENGTH OF PROJECT 117874 FEET=2232 MILES



CONVENTIONAL SIGNS

COUNTY LINE	.....
TOWN LINE	.....
FENCE LINE	.....
STONE WALL	.....
UNFENCED PROPERTY	.....
GUARD RAIL	.....
TRAVELED WAY	.....
RAILROAD	.....
RETAINING WALL	.....
CENTER LINE	.....
SURVEY LINE	.....
CULVERT	.....
DROP INLET	.....
TROLLEY HOLE	.....
POWER POLE	.....
TELEPHONE HOLE	.....
TREES	.....
HEDGE	.....

GROUND ELEVATION DATUM 1916 LINE

GRADE ELEVATION DATUM 1916 LINE

CURVE DATA

DEFLECTION OF ANGLE	Δ
DEGREE OF CURVE	D
RADIUS OF CURVE	R
TANGENT DISTANCE	T
LENGTH OF CURVE	L
EXTERNAL DISTANCE	E
POINT OF INTERSECTION	P.I.
POINT OF CURVE	P.C.
POINT OF TANGENT	P.T.
POINT ON TANGENT	P.O.T.
POINT ON SUB-TANGENT	P.O.S.T.

SCALES

TITLE	1" = 400'
TYPICAL	1" = 2'
PLAN	1" = 50'
PROFILE HORIZONTAL	1" = 10'
VERTICAL	1" = 5'
CROSS-SECTIONS	1" = 5'

THESE PLANS ARE SUBJECT TO SUCH REVISIONS AS MAY BE  
 REQUIRED BY THE BUREAU OF PUBLIC ROADS OR THE COMMISSIONER  
 OF HIGHWAYS.

CONSTRUCTION IS TO BE CARRIED ON IN ACCORDANCE WITH  
 THE PLANS AND THE STANDARD SPECIFICATIONS FOR HIGHWAY AND BRIDGE  
 CONSTRUCTION OF JANUARY 1955 SUBMITTED TO THE BUREAU OF  
 PUBLIC ROADS AS APPROVED JULY 5, 1955, INCLUDING ALL SUBSEQUENT  
 APPROVED REVISIONS AND SUCH REVISED SPECIFICATIONS AND SPECIAL  
 PROVISIONS AS ARE SUBMITTED WITH THE PLANS.

APPROVED <u>D. H. [Signature]</u> SECONDARY ENGINEER DATE <u>10/30/59</u>	APPROVED <u>E. W. [Signature]</u> CONSTRUCTION ENGINEER DATE <u>11/6/59</u>	APPROVED _____ SHOICE ENGINEER DATE _____	APPROVED <u>A. R. [Signature]</u> DISTRICT ENGINEER DATE <u>10/30/59</u>	APPROVED <u>[Signature]</u> HIGHWAY ENGINEER DATE <u>11/6/59</u>	APPROVED <u>[Signature]</u> DATE <u>11/6/59</u>
---	---	---	--	--	--

DEPARTMENT OF COMMERCE  
 BUREAU OF PUBLIC ROADS  
 Pin # 000096

DISTRICT ENGINEER \_\_\_\_\_ DATE \_\_\_\_\_

PROJECT ST. NO. 271(L)

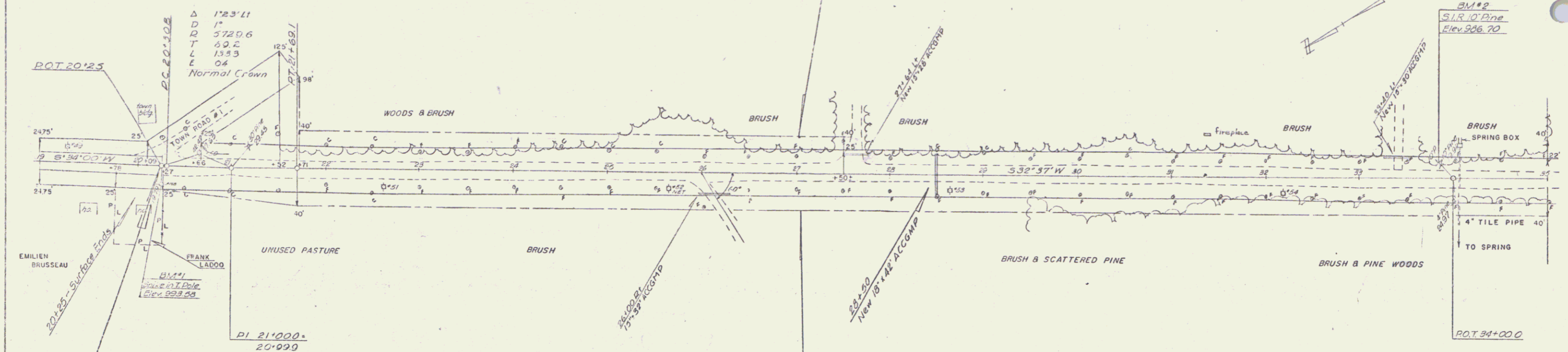
SHEET 1 OF 47

NOTE: CONSTRUCT DRIVES MINIMUM 12' WIDTH AND 15' FLARE RADIUS

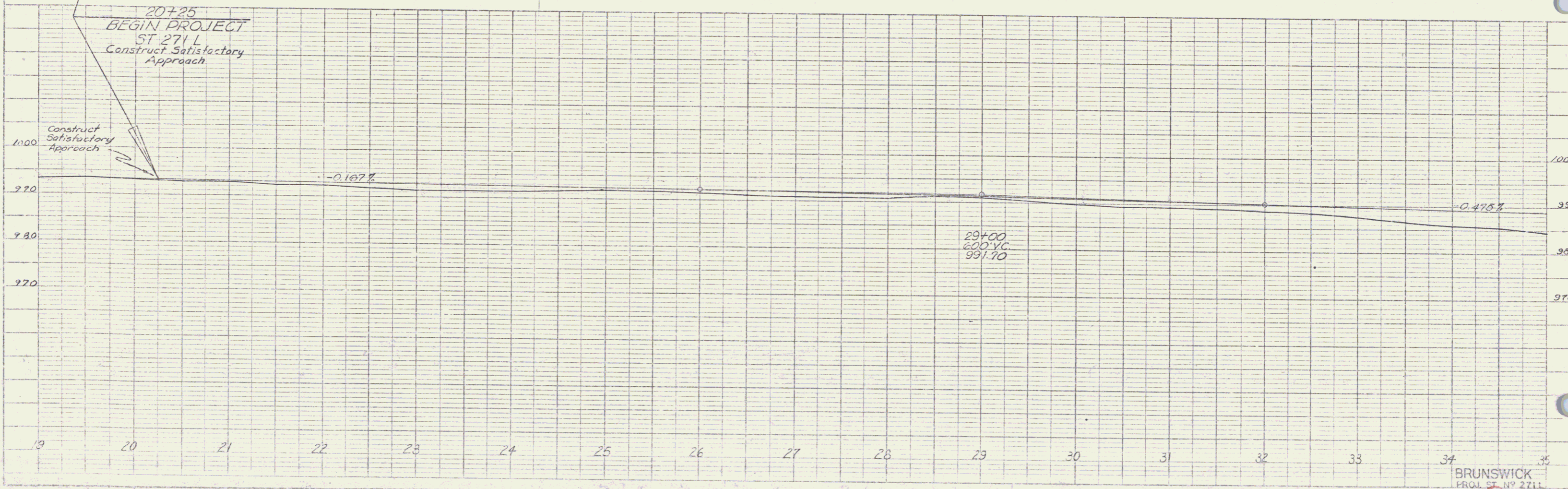
CONSTRUCT APPROACH  
LT 20+25

CONSTRUCT DRIVES  
LT 27+64 RT 26+00  
33+40

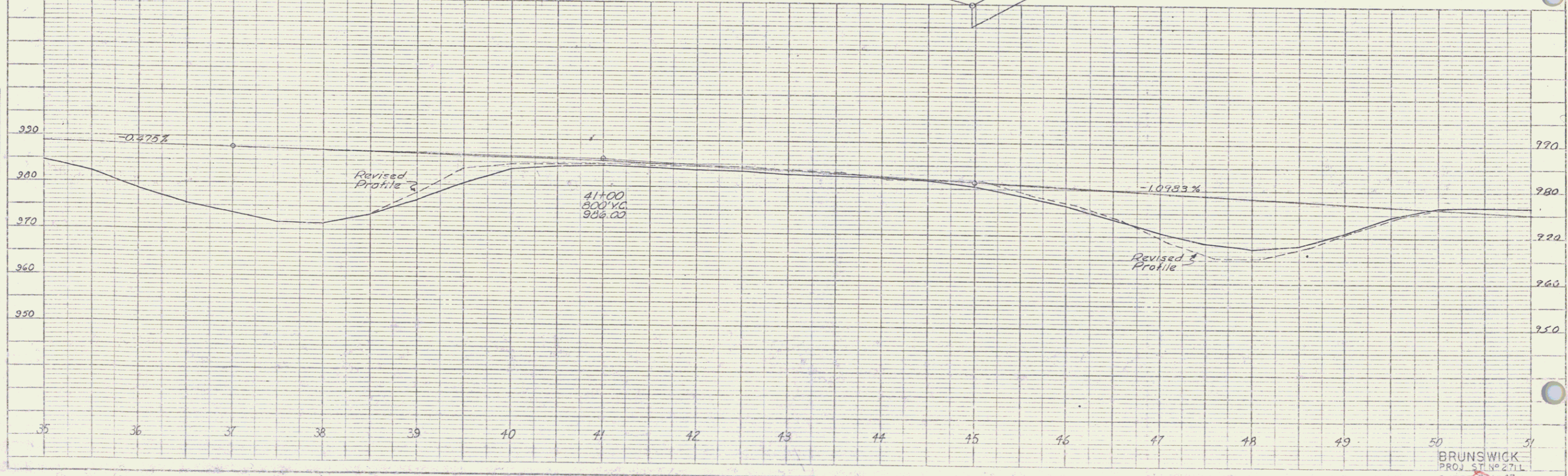
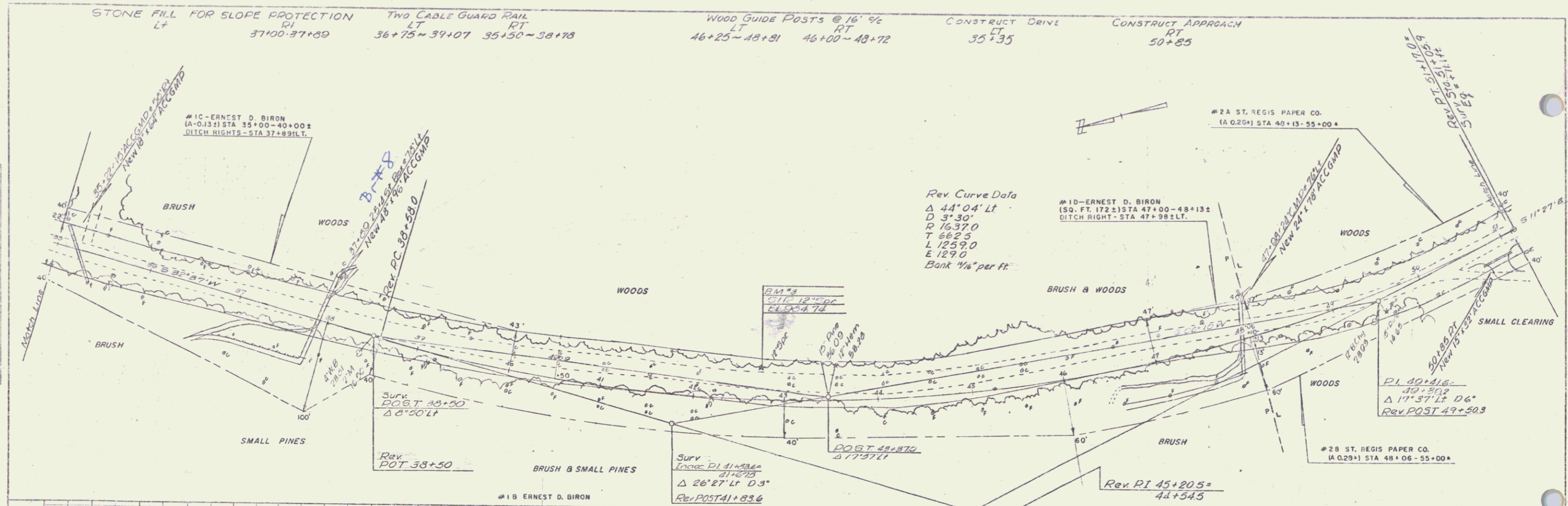
PLAN	DATE	BY
DESIGNED	1/28	SMITH
CHECKED		
APPROVED		



PROFILE	DATE	BY
DESIGNED		
CHECKED		
APPROVED		



BRUNSWICK  
PROJ. NO. 2711  
SHEET 2 OF 47



PLAN

DATE	1/25/58
BY	W.D.B.
CHECKED	W.D.B.
NOTED	W.D.B.
SCALE	AS SHOWN
PROJECT	STATE ST. 2711
SECTION	BRUNSWICK
SHEET	8 OF 47

PROFILE

DATE	1/25/58
BY	W.D.B.
CHECKED	W.D.B.
NOTED	W.D.B.
SCALE	AS SHOWN
PROJECT	STATE ST. 2711
SECTION	BRUNSWICK
SHEET	8 OF 47

PLATE 1, PROFILE, R.P. & R.R. 1958-59  
 NEWELL & BROWN CO. NEW YORK  
 K.A.E.C. No. 346-02

BRUNSWICK  
 PROJ. ST. NO. 2711  
 SHEET 8 OF 47





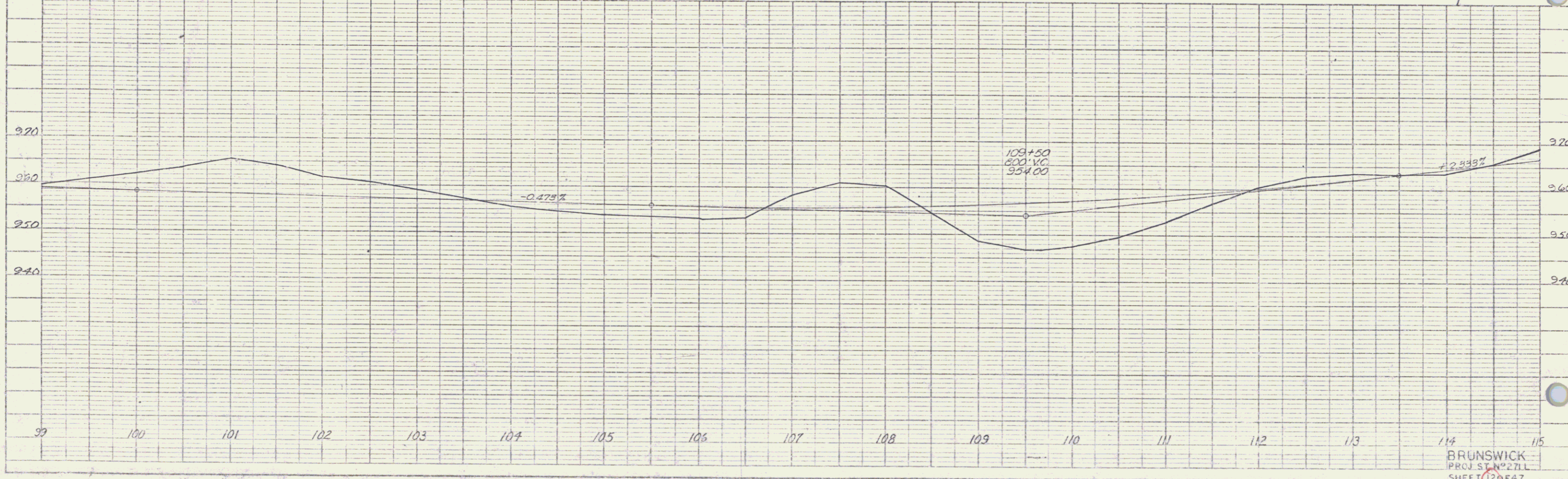
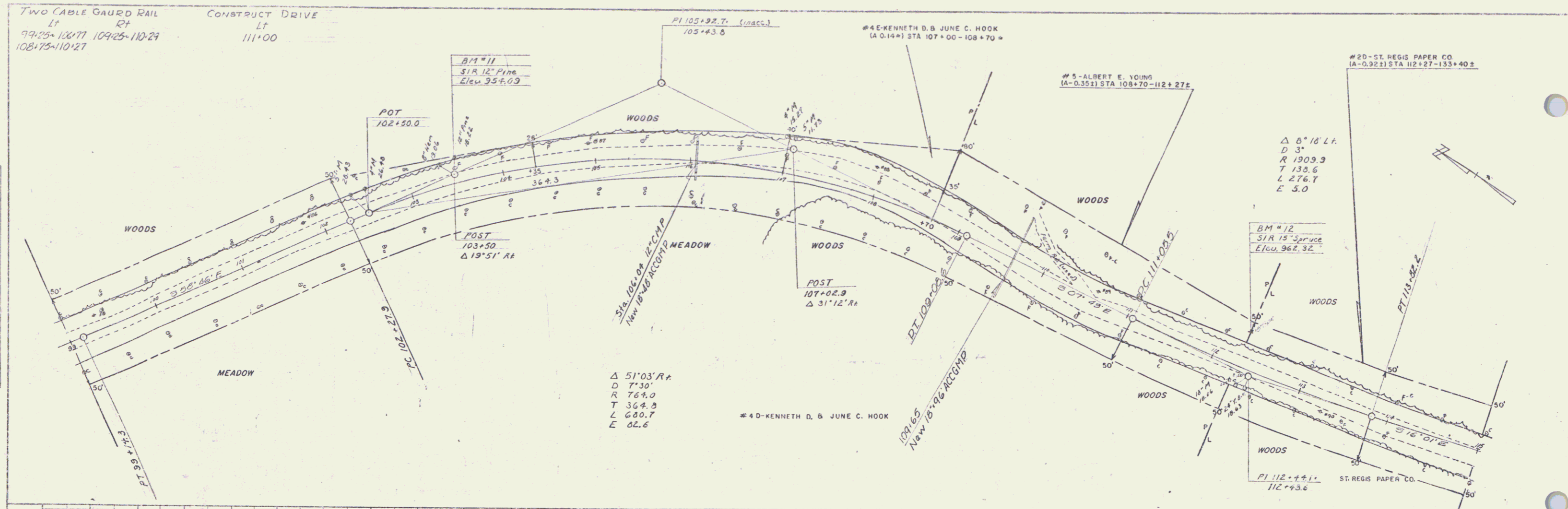


TWO CABLE GAUARD RAIL  
 LT  
 79+25-108+77 109+25-110+29  
 108+75-110+27

CONSTRUCT DRIVE  
 LT  
 111+00

PLAN	DATE	BY
REVISION		
NOTE BOOK		
TRACED		

PROFILE	DATE	BY
REVISION		
NOTE BOOK		
TRACED		



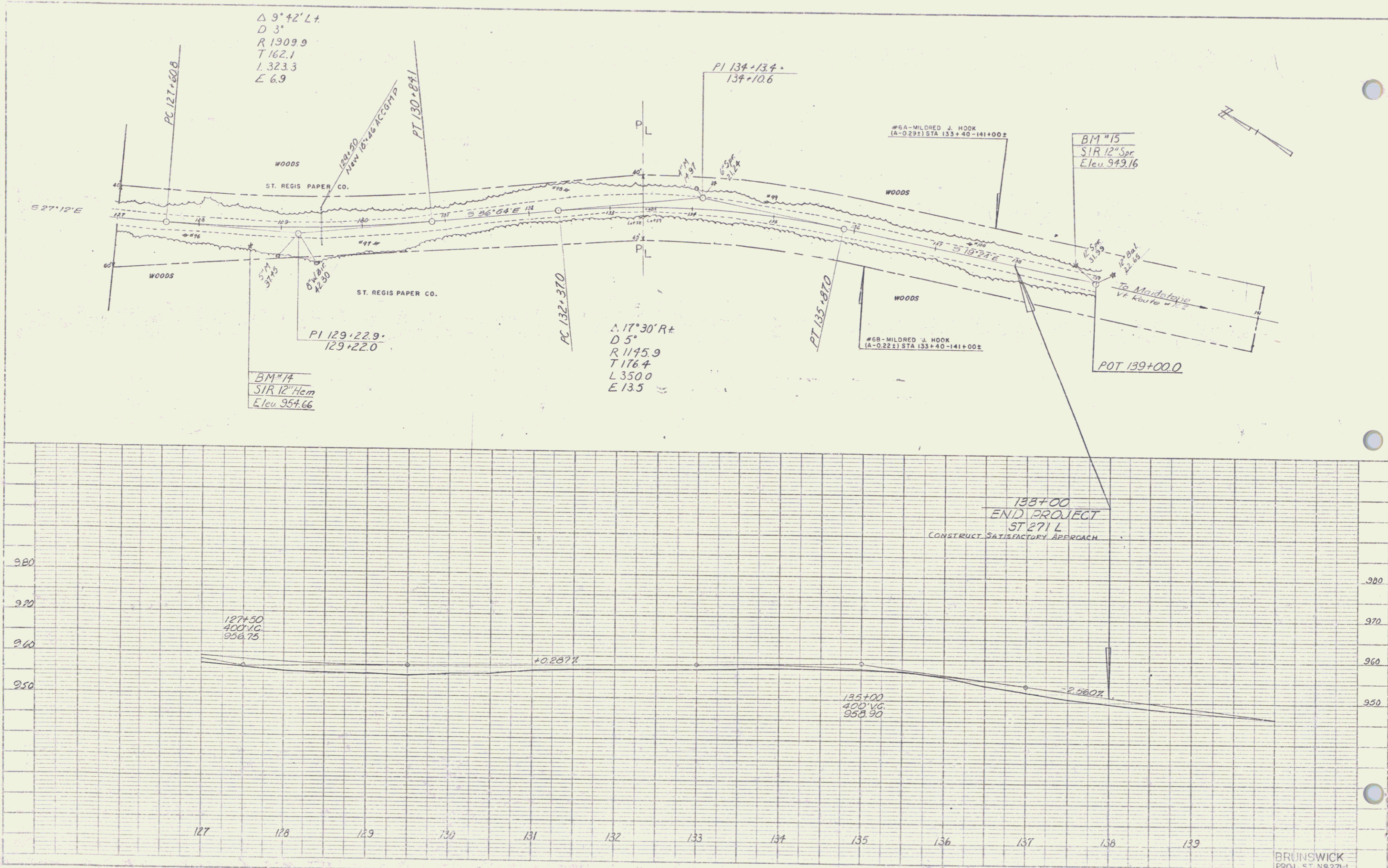
BRUNSWICK  
 PROJ. ST. 271 L  
 SHEET 120 E 47

7



PLAN	DATE	BY	CHECKED
1/25/62	1/25/62	A. E. ...	...
1/25/62	1/25/62	...	...

PROFILE	DATE	BY	CHECKED
1/25/62	1/25/62	...	...
1/25/62	1/25/62	...	...



BRUNSWICK  
 PROJ. ST. NO. 271-L  
 SHEET NO. 47