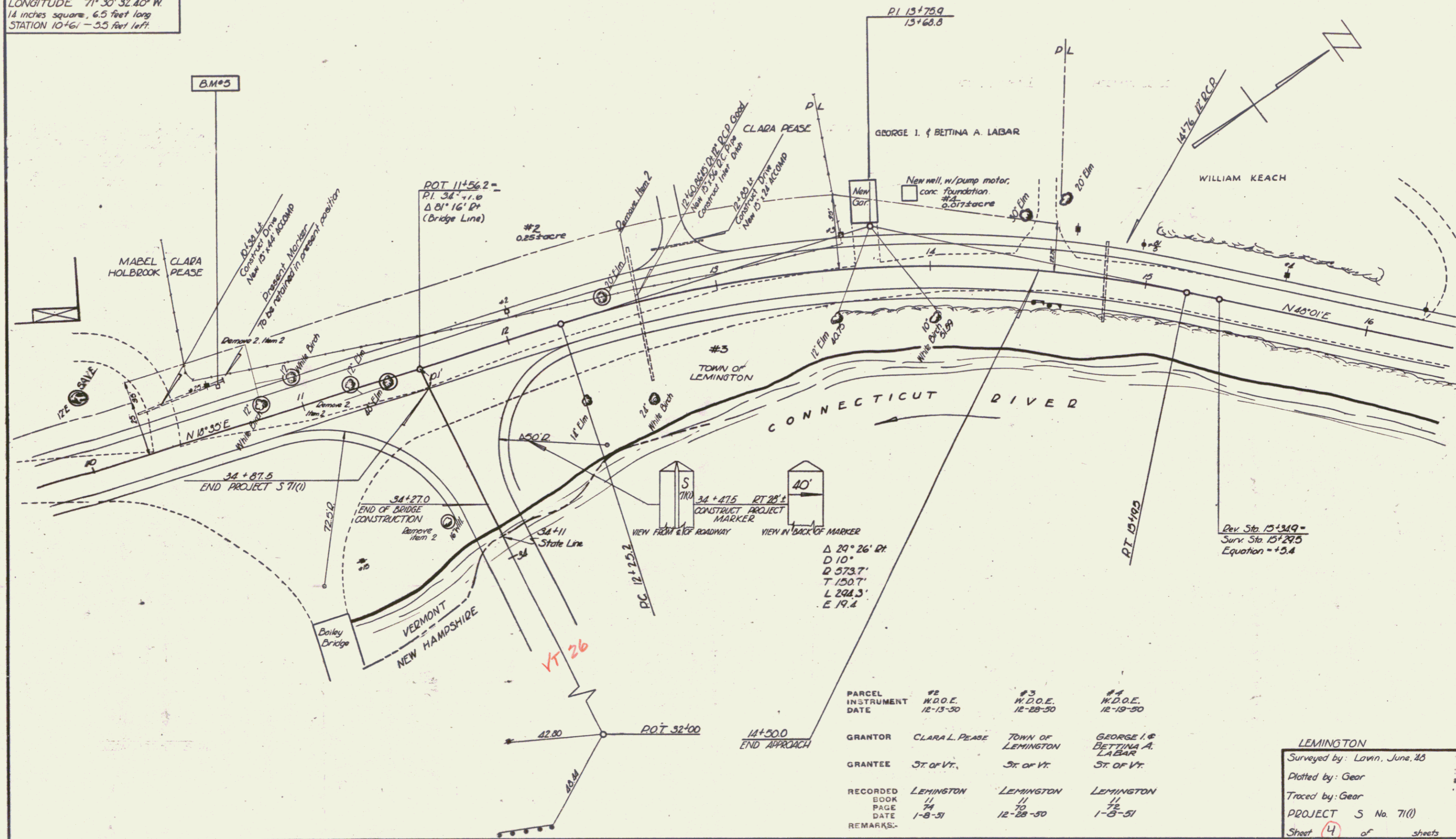


VERMONT-NEW HAMPSHIRE  
STATE LINE BOUNDARY REFERENCE  
MONUMENT NUMBER 76  
ELEVATION 1017.032 FEET  
LATITUDE 44° 53' 56.34" N.  
LONGITUDE 71° 30' 32.40" W.  
14 inches square, 6.5 feet long  
STATION 10+61 - 5.5 feet left.



PARCEL	#2	#3	#4
INSTRUMENT	W.D.O.E.	W.D.O.E.	W.D.O.E.
DATE	12-13-50	12-28-50	12-19-50
GRANTOR	CLARA L. PEASE	TOWN OF LEMINGTON	GEORGE I. & BETTINA A. LABAR
GRANTEE	ST. OF VT.	ST. OF VT.	ST. OF VT.
RECORDED	LEMINGTON	LEMINGTON	LEMINGTON
BOOK	11	11	11
PAGE	74	70	72
DATE	1-8-51	12-28-50	1-8-51
REMARKS			

LEMINGTON  
 Surveyed by: Lawn, June 48  
 Plotted by: Gear  
 Traced by: Gear  
 PROJECT S No. 71(1)  
 Sheet 4 of 4 sheets