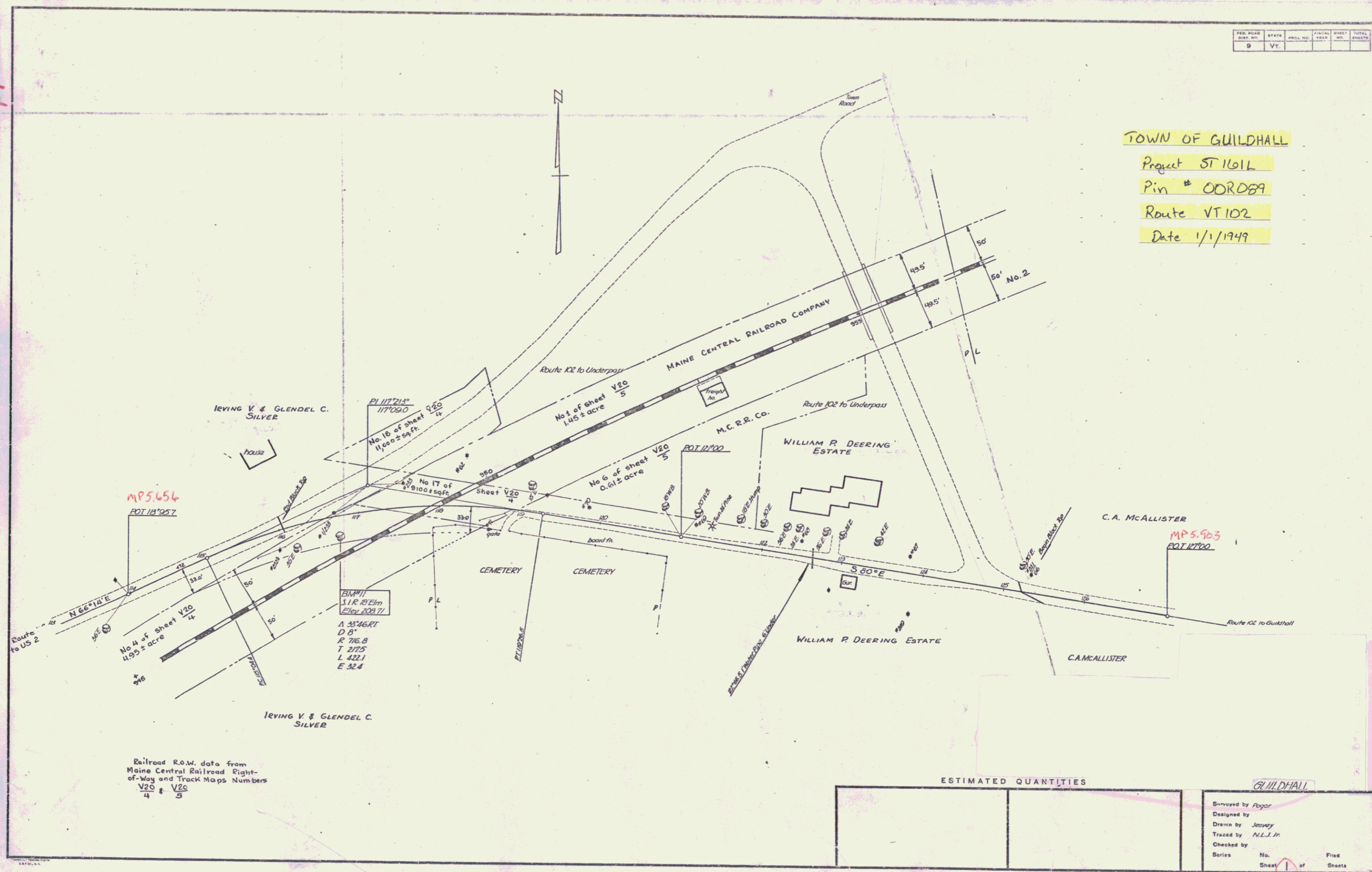


VT 102

FED. ROAD DIST. NO.	STATE	SECTIONAL NO.	YEAR	SHEET NO.	TOTAL SHEETS
9	VT.				

TOWN OF GUILDHALL  
 Project ST 1161L  
 Pin # 00R089  
 Route VT 102  
 Date 1/1/1949



Railroad R.O.W. data from  
 Maine Central Railroad Right-  
 of-Way and Track Maps Numbers  
 V20/4 & V20/5

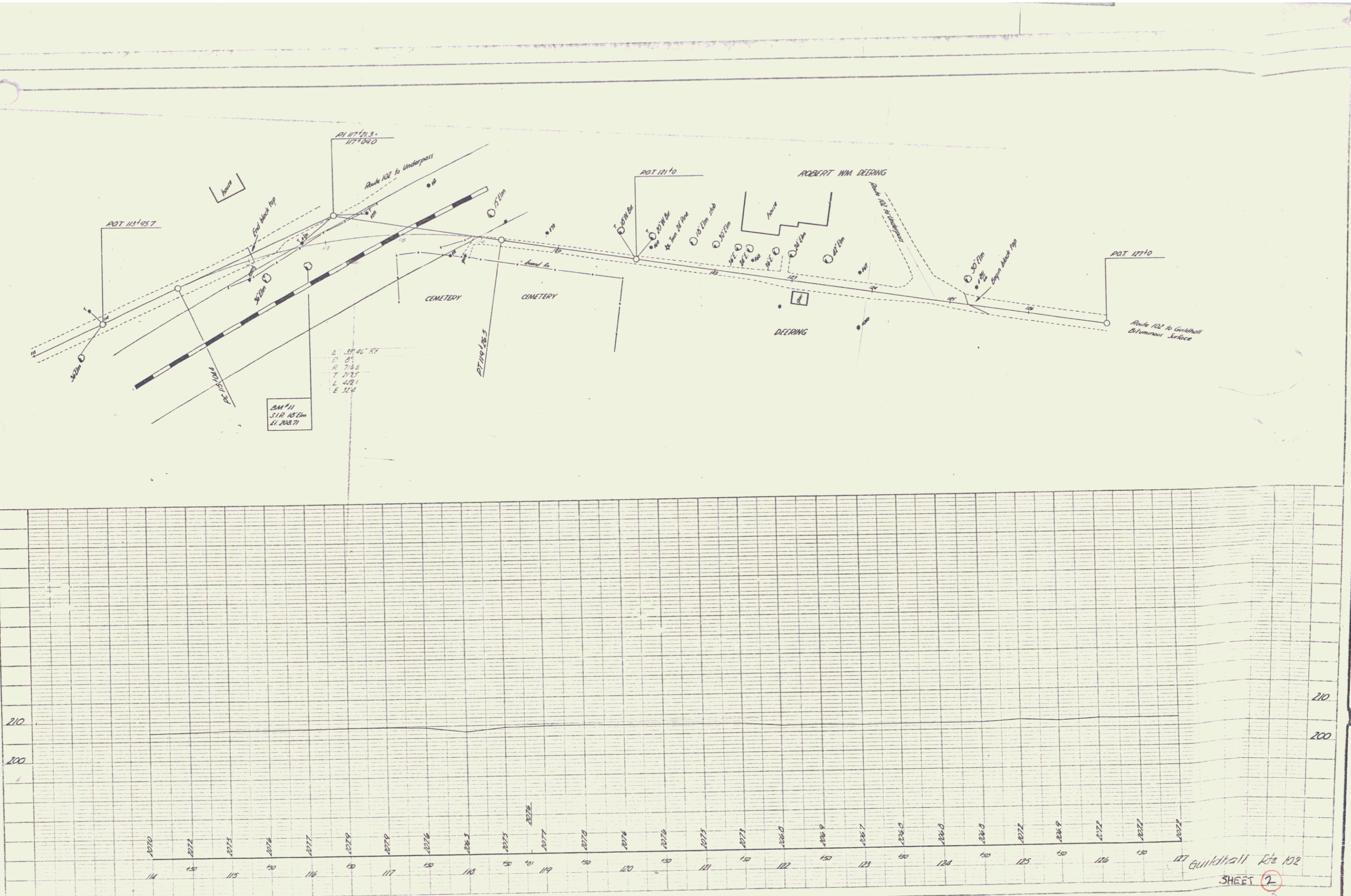
ESTIMATED QUANTITIES

ESTIMATED QUANTITIES		
GUILDHALL		
Surveyed by	Fogor	
Designed by	Jevey	
Drawn by	N.L.J. Jr.	
Traced by	N.L.J. Jr.	
Checked by		
Series	No.	Filed
	Sheet 1	of 1

VT 102

PLAN  
 SURVEYOR  
 REGISTERED  
 STATE BOOK  
 NO. OF MAP CHECKS  
 NO.

DATE  
 BY  
 PROJECT  
 DRAWN BY  
 CHECKED BY  
 SUPERVISOR NAME AND DIVISION



SHEET 2