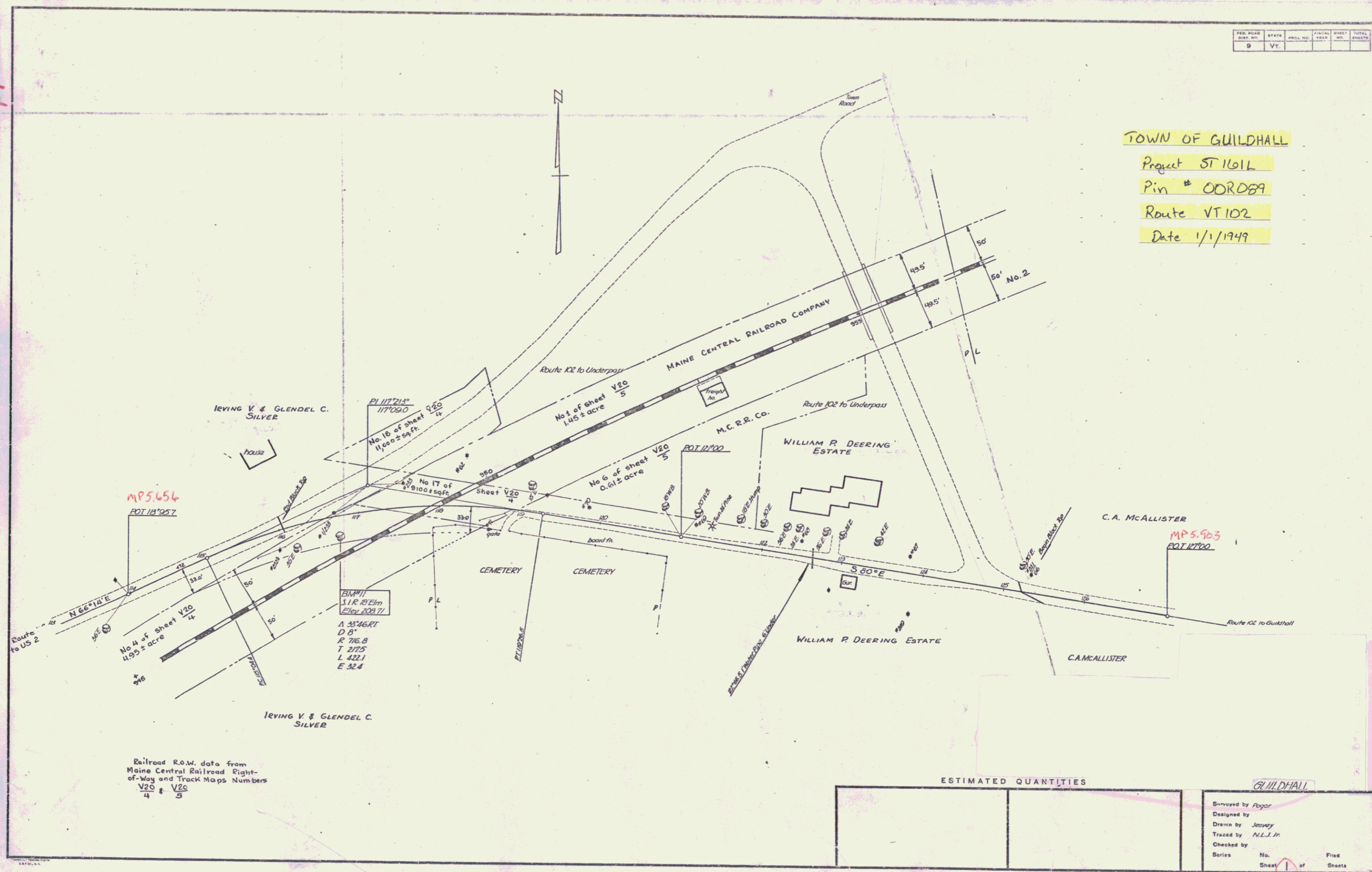


VT 102

FED. ROAD DIST. NO.	STATE	SECTIONAL NO.	YEAR	SHEET NO.	TOTAL SHEETS
9	VT.				

TOWN OF GUILDHALL
 Project ST 101L
 Pin # 00R089
 Route VT 102
 Date 1/1/1949



Railroad R.O.W. data from
 Maine Central Railroad Right-
 of-Way and Track Maps Numbers
 V20/4 & V20/5

ESTIMATED QUANTITIES

ESTIMATED QUANTITIES		
GUILDHALL		
Surveyed by	Fogor	
Designed by	Jeavey	
Drawn by	N.L.J. Jr.	
Traced by	N.L.J. Jr.	
Checked by		
Series	No.	Filed
	Sheet 1	of 1

VT 102