

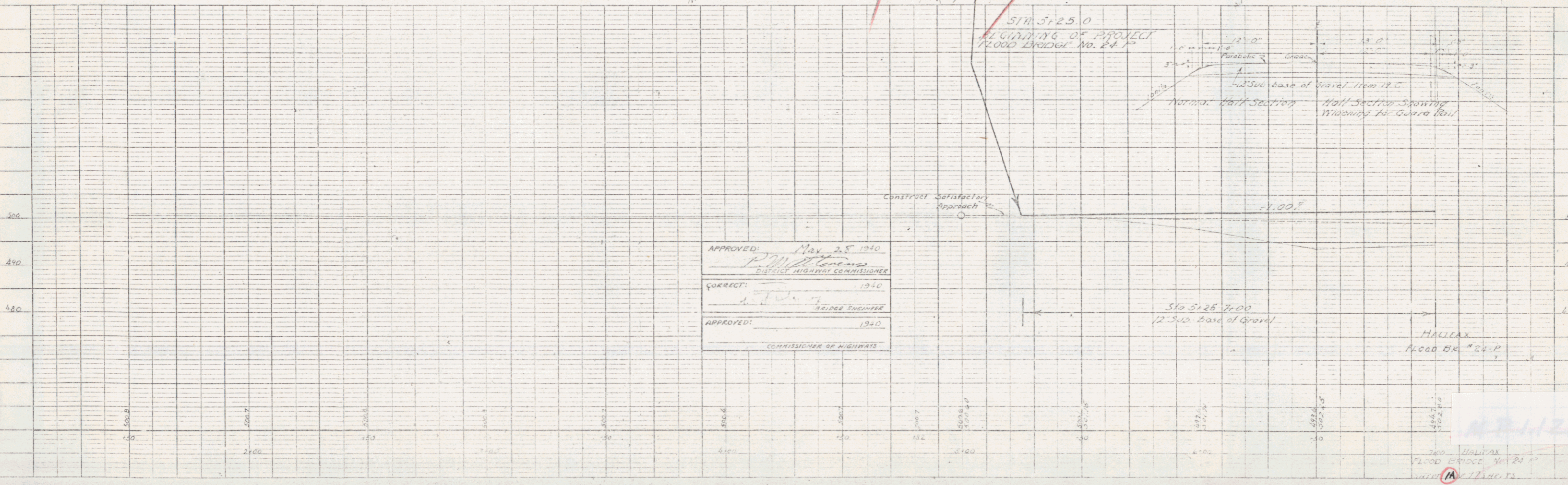
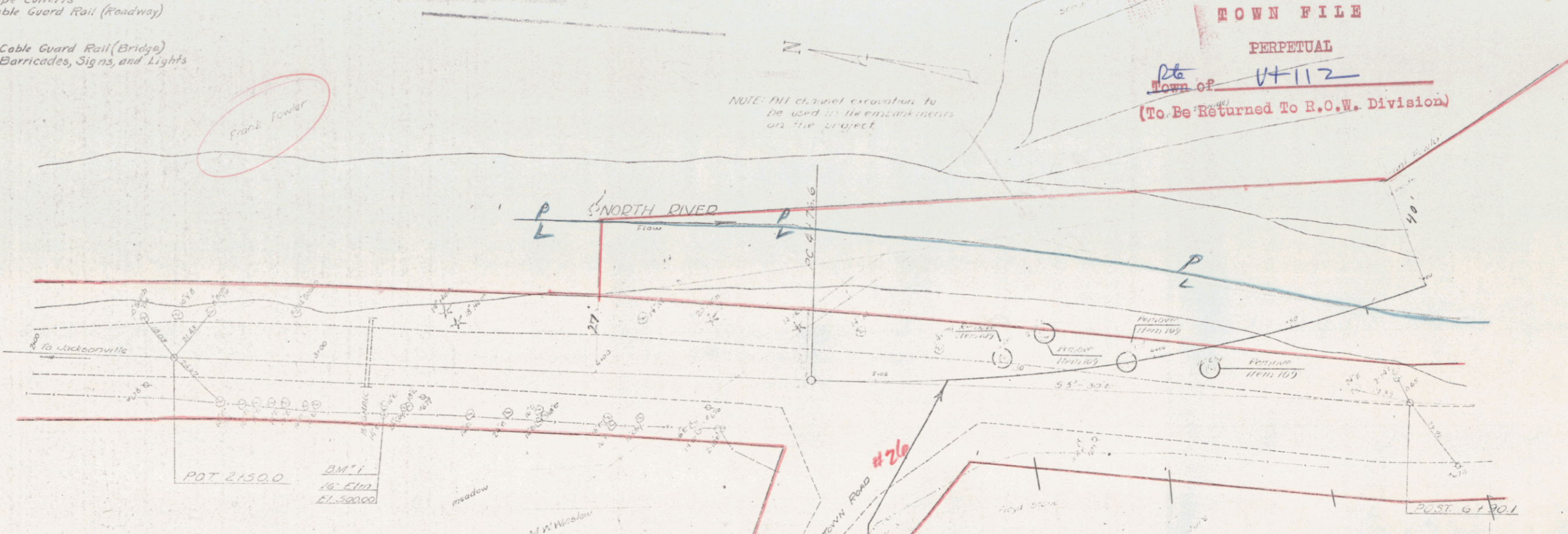
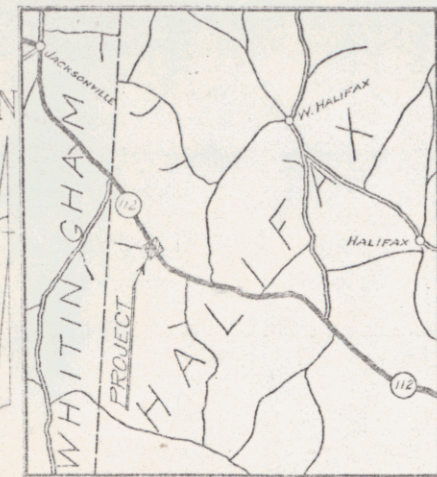
- INDEX OF SHEETS**
- Sheet No. 1-3 Layout and Profile
 - " 4 Banking and Widening Tables
 - " 5 Std. Struct. Sheet 3-20 Pipe Culverts
 - " 6 " " " 3-30 Cable Guard Rail (Roadway)
 - " 7 Abutment Details
 - " 8 Superstructure Details
 - " 9 Std. Struct. Sheet SB-5C Cable Guard Rail (Bridge)
 - " 10 " " SB-11 Barricades, Signs, and Lights
 - " 11-17 Cross-sections

POOR ORIGINAL COPY

**RIGHT-OF-WAY DIVISION
TOWN FILE**

**PERPETUAL
TOWN OF V+112
(To Be Returned To R.O.W. Division)**

DATE	
BY	
REVISIONS	
NO. DATE	
1	
2	
3	
4	
5	
6	
7	
8	
9	
10	
11	
12	
13	
14	
15	
16	
17	



APPROVED: Nov 25 1940
FRANK JENKINS
DISTRICT HIGHWAY COMMISSIONER

CHECKED: 1940
H. W. J.
BRIDGE ENGINEER

APPROVED: 1940
COMMISSIONER OF HIGHWAYS

STEARNS R. JENKINS
V+112