

REV. CURVE
 A 19° 40' 13"
 D 2" 30"
 R 2192.0
 T 397.2
 L 784.7
 E 34.2

1939 2 25
 PWA Doc No Vr 1022-F Cont to Bc 21

Sta 112+00.11
 Construct B Line Approach
 (See Sheet 25A125)

Sta 112+00.11
 14° 01' 14"
 52' 34" L
 52' 30"

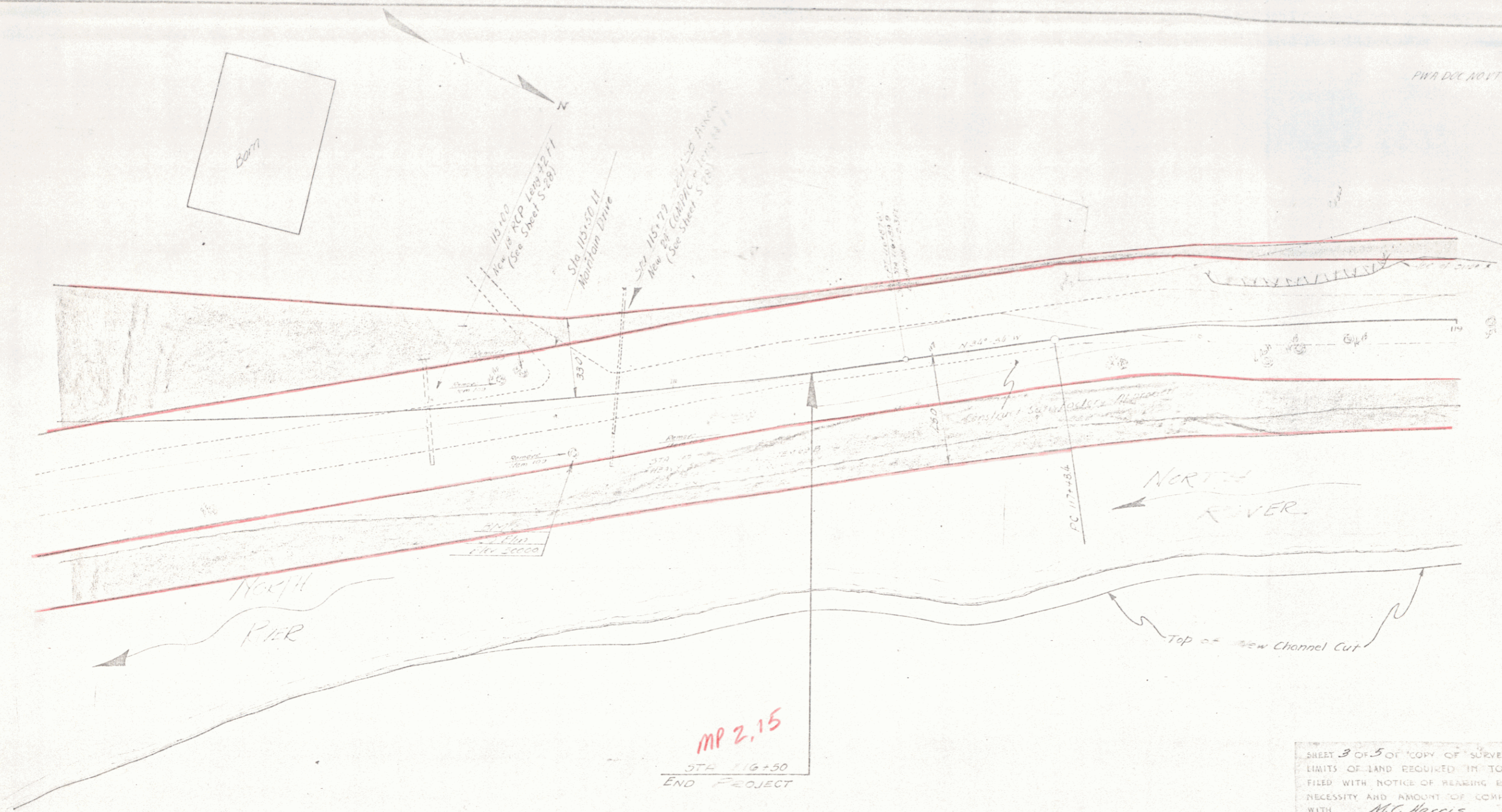
Sta 112+00.11
 Temporary Bridge
 Removal and Present Structure
 within 1000 ft

SHEET 2 OF 506 COPY OF SURVEY SHOWING
 LIMITS OF LAND REQUIRED IN TOWN OF HALIFAX VI
 FILLED WITH NOTICE OF HEARING RELATIVE TO
 NECESSITY AND AMOUNT OF COMPENSATION THEREFOR
 WITH **M.C. Harris** OF Halifax, N.S.

ESTIMATED QUANTITIES	

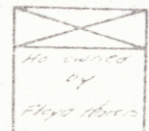
Halifax PWA Doc No Vr 1022-F Cont to Bc 21

Surveyed by	
Designed by	
Drawn by	
Traced by	
Checked by	
Series	No. 2 of 21 Sheets



SHEET 3 OF 5 OF COPY OF SURVEY SHOWING
 LIMITS OF LAND REQUIRED IN TOWN OF HALIFAX,
 FILED WITH NOTICE OF HEARING RELATIVE TO
 NECESSITY AND AMOUNT OF COMPENSATION THEREFOR
 WITH Mc. Harris OF HALIFAX, VT.

HALIFAX
 PWA DOC NO VT 1092-F
 CONTRACT NO 10 BRIDGE 1.2

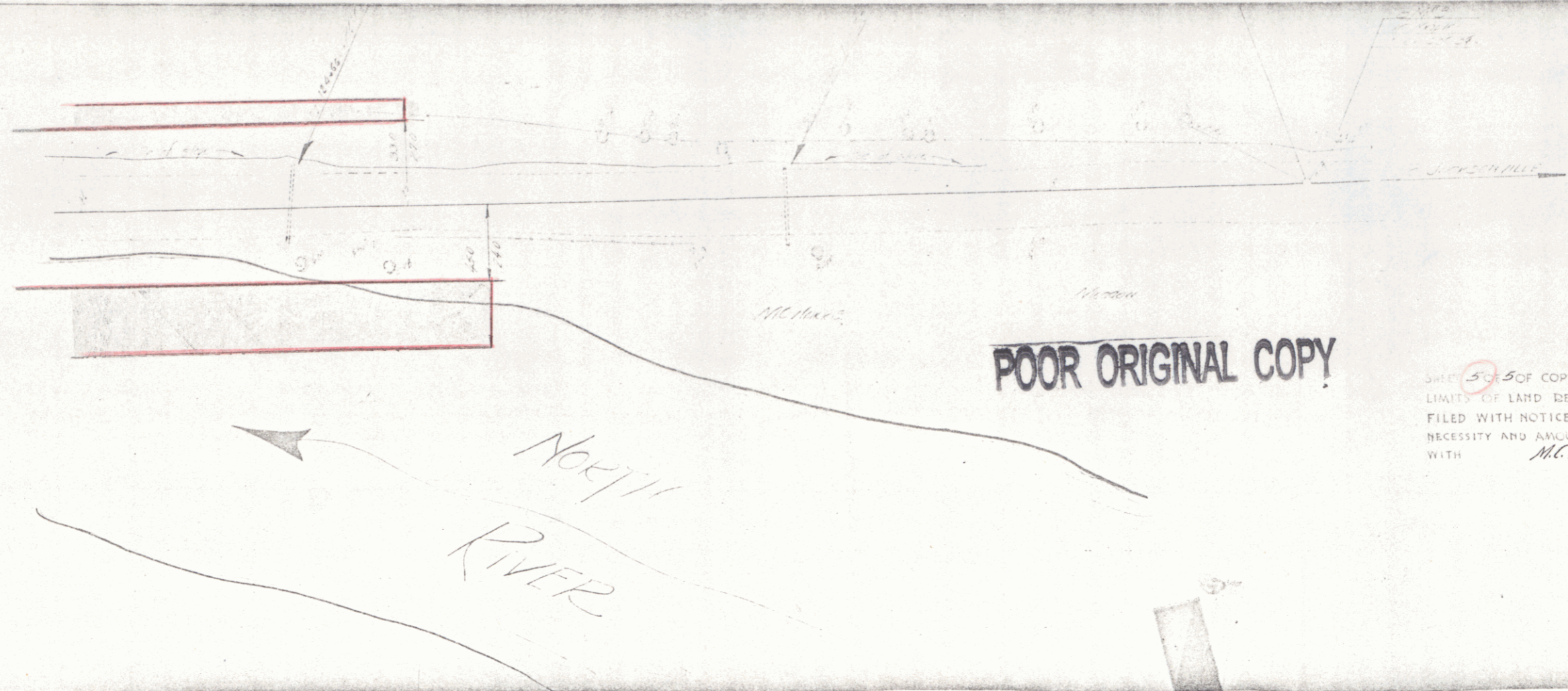


Scale 1" = 100' or 30.48m Sta 105+50 to Sta 117+50

ESTIMATED QUANTITIES	

Surveyed by
 Designed by
 Drawn by
 Checked by
 Scale: NA
 Sheet 4 of 5 Sheets

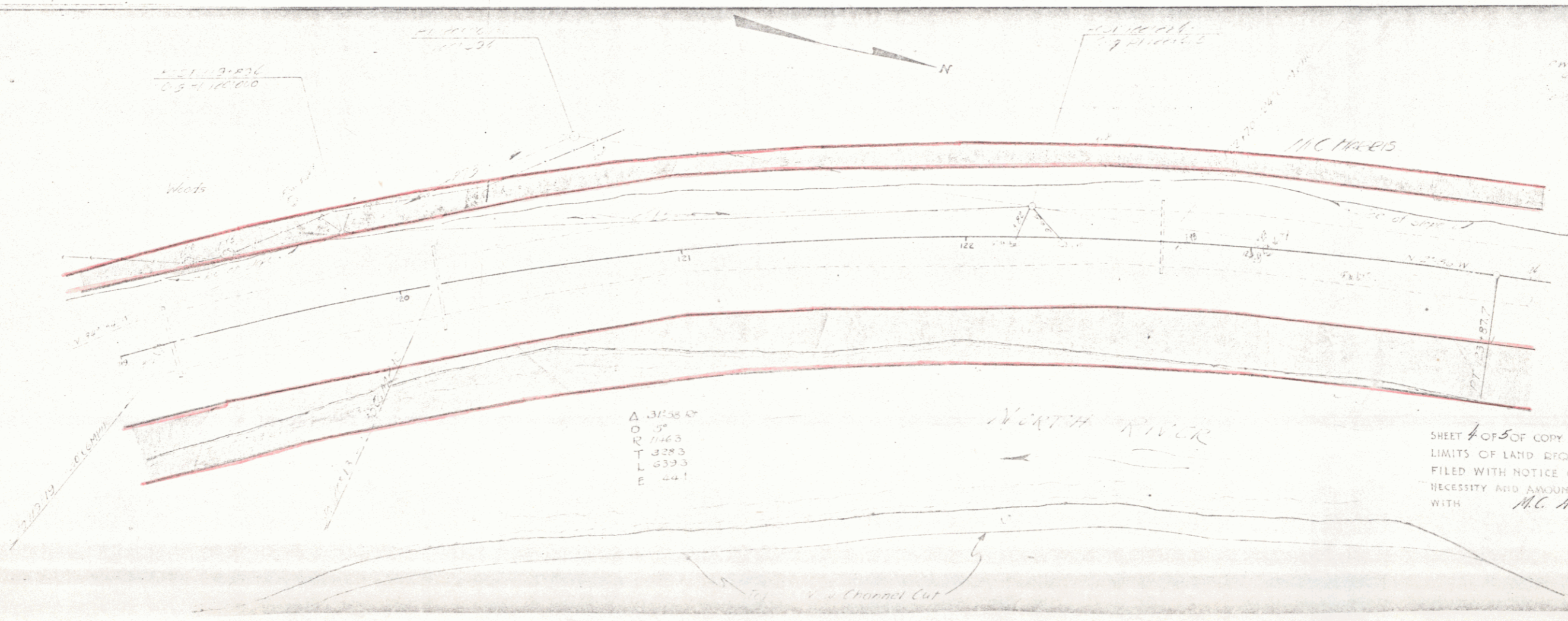
PLAN	REVISED	BY	DATE
NOTE BOOK	NO. 1		
BY			
DATE			



POOR ORIGINAL COPY

SHEET 5 of 5 of COPY OF SURVEY SHOWING LIMITS OF LAND REQUIRED IN TOWN OF Halifax, VT FILED WITH NOTICE OF HEARING RELATIVE TO NECESSITY AND AMOUNT OF COMPENSATION THEREFOR WITH *Mc Harris* OF Halifax, VT.

PLAN	REVISED	BY	DATE
NOTE BOOK	NO. 1		
BY			
DATE			



Δ 327.35
 O R 9
 T 228.3
 L 239.3
 E 24.1

SHEET 4 of 5 of COPY OF SURVEY SHOWING LIMITS OF LAND REQUIRED IN TOWN OF Halifax, VT FILED WITH NOTICE OF HEARING RELATIVE TO NECESSITY AND AMOUNT OF COMPENSATION THEREFOR WITH *Mc Harris* OF Halifax, VT.

SHEET 5

4