

HIGHWAY DIVISION  
 TOWN FILE  
 TOWN OF  
 (To Be Returned To R.O.W. Division)

Conc. I Beam (1927)  
 Clear Span - 560  
 Clearance - 90  
 Roadway - 20.5

BM#15  
 Spot on Abut  
 333.24  
 P.O.T. 0+500  
 MP 3.102  
 To Jacksonville

NORTH RIVER

Woods

Wesley Stone

POST 31061

PL 6+25.5  
4+691

NORTH RIVER

58°15'E

2.54' Paces

HIGH GRADE SHOWN BY DASH LINE EXCAV 31,653 CY  
 LOW GRADE SHOWN BY SOLID LINE EXCAV 40,034 CY  
 Δ-24.23 RT  
 D-6°  
 R-955.4  
 T-206.4  
 L-406.8  
 E-22.1

R40 VT 112

Pin # 001080  
 TOWN: HALIFAX  
 Project No. SA No 244  
 VT Route: 112  
 Date: 10/1/38

MP 3.102-2885  
 2.814-3.307

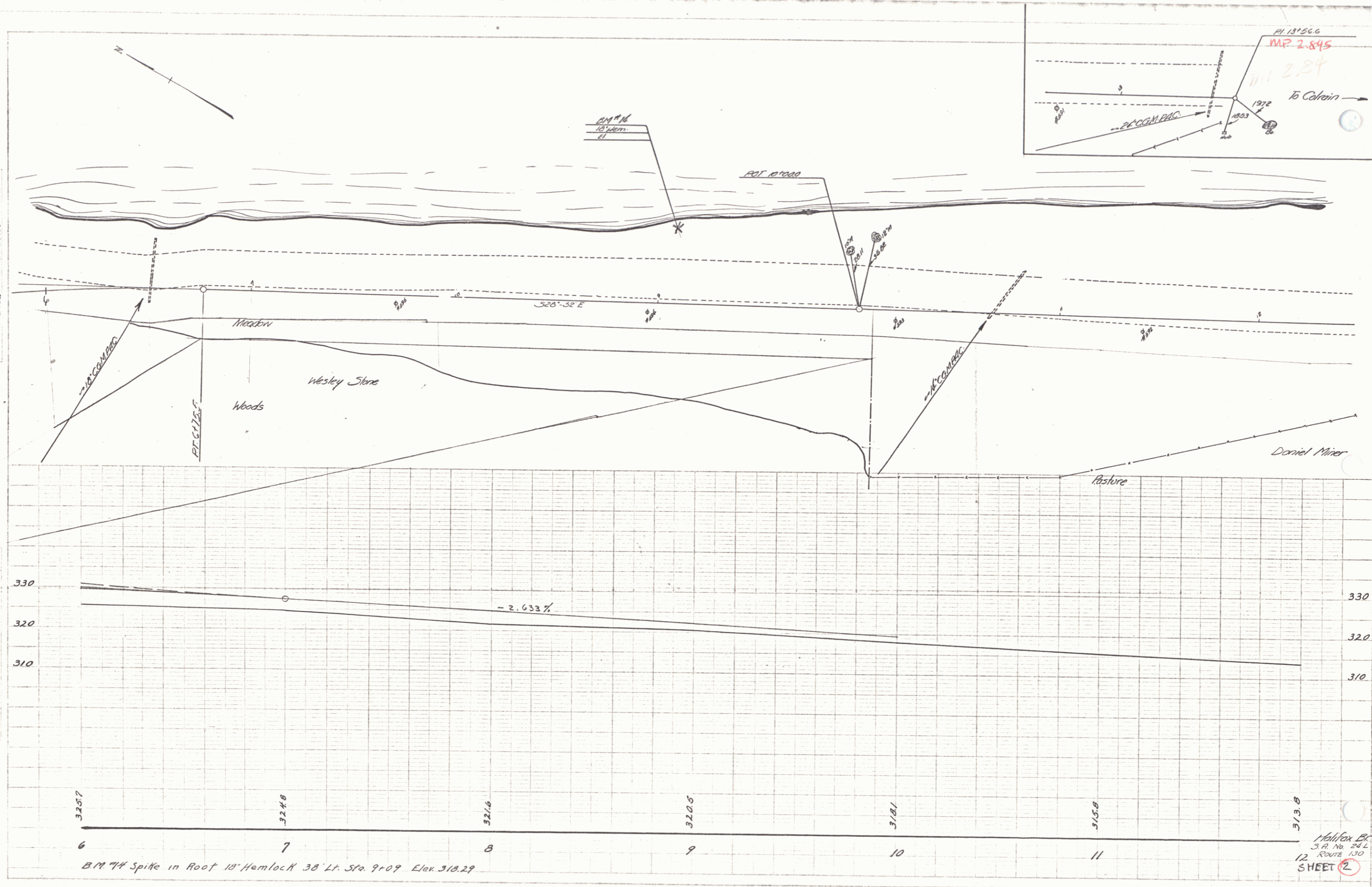
ESTIMATED QUANTITIES

--	--

Halifax Co.  
 Surveyed by F. Barrett - 10-38  
 Designed by  
 Checked by L. Lavin - 10-38  
 Traced by L. Lavin - 10-38  
 Checked by  
 Series No. 1 of 1  
 Sheet 1 of 1

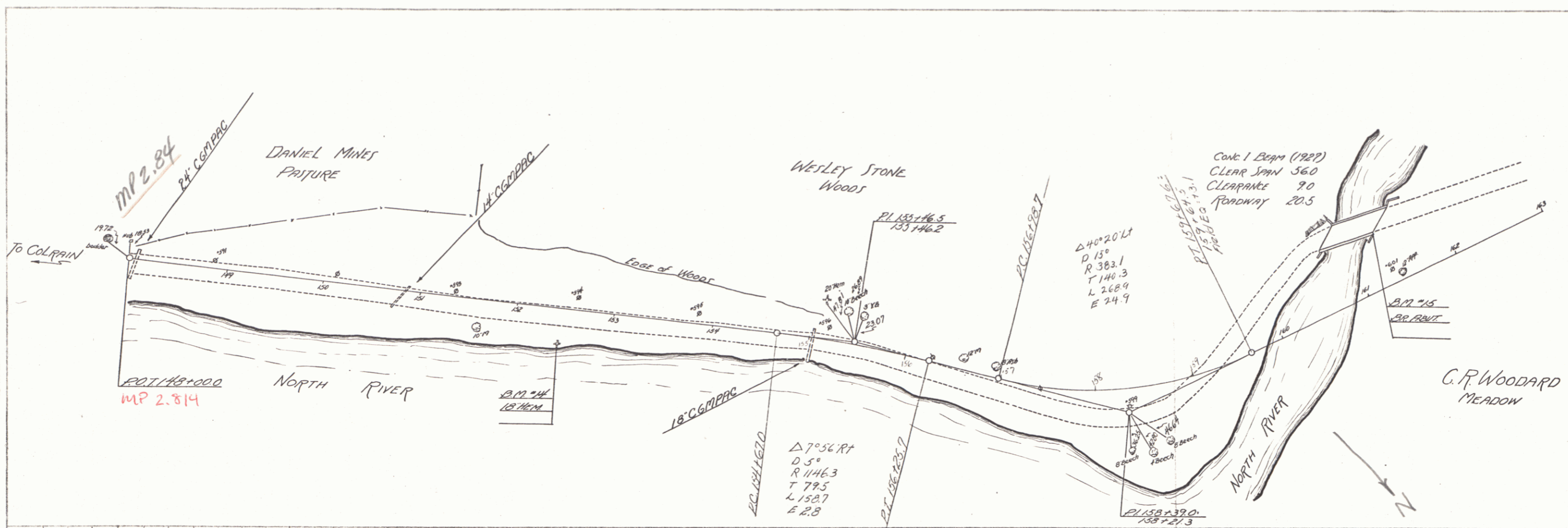
2. Elevation  
1. Contour  
1. Contour  
1. Contour

1. Contour  
1. Contour  
1. Contour



1. Contour  
3. A. No. 24. L  
12. Route 130  
SHEET 2

PLAN  
 PROJECT  
 DATE  
 DRAWN BY  
 CHECKED BY  
 SCALE

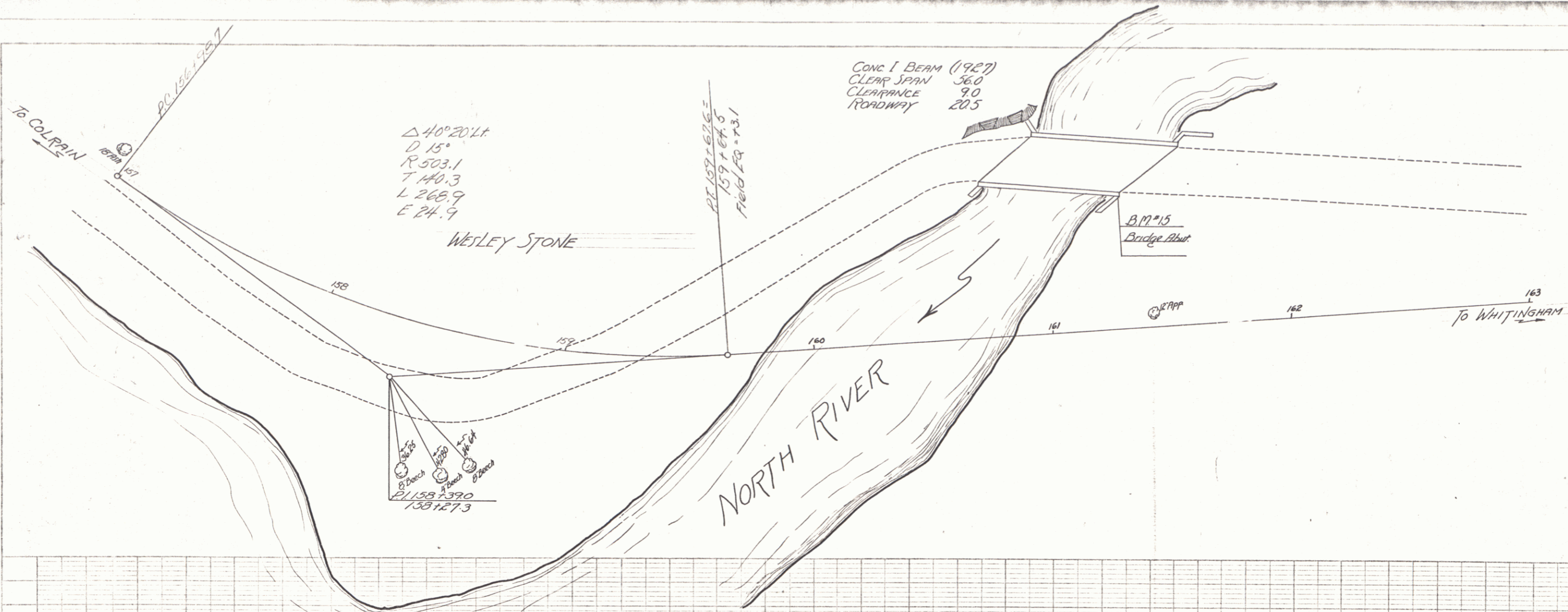


PLAN  
 PROJECT  
 DATE  
 DRAWN BY  
 CHECKED BY  
 SCALE

PLATE 1 - PLAN - PROFILE OF F. & E. COMPANY  
 BRIDGE & ROAD CO., NEW YORK

Halifax 24-1  
 SHEET 3

3



CONC I BEAM (1927)  
 CLEAR SPAN 56.0  
 CLEARANCE 9.0  
 ROADWAY 20.5

Δ 40° 20' Lt.  
 D 15'  
 R 503.1  
 T 140.3  
 L 268.9  
 E 24.9

Wesley Stone

B.M. 15  
 Bridge Abut.

NORTH RIVER

PLAN  
 SHEET  
 PROJECT  
 DRAWN  
 DATE

DATE  
 DRAWN  
 CHECKED  
 APPROVED

PLATE 1-1000 PRO-20 © P. & S. L. & S. ENGINEERS  
 4000, 4000, 4000

HALIFAX 24-L  
 SHEET 4  
 DIST. # 1 PLAN 4

