

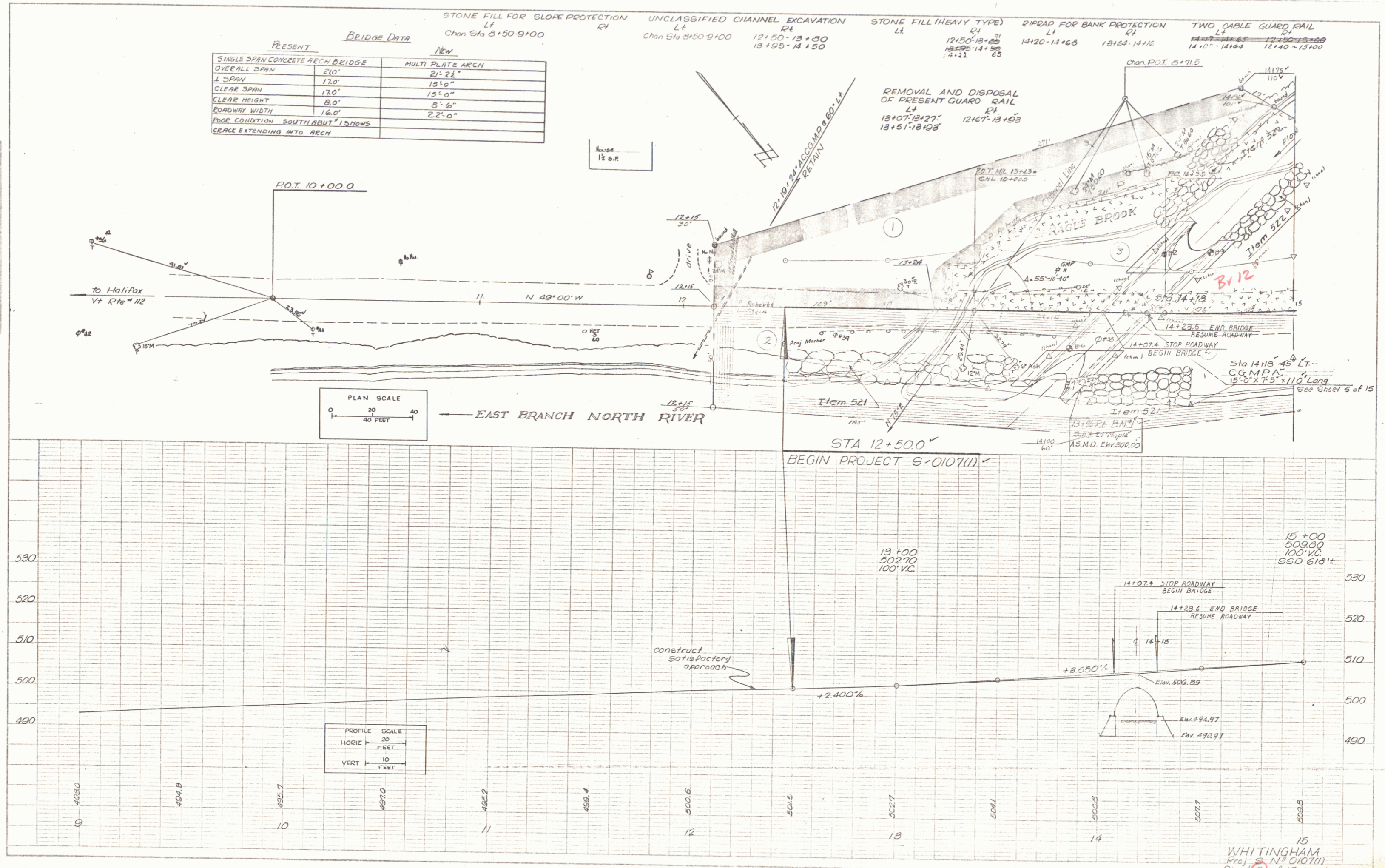
**BRIDGE DATA**

PRESENT		NEW	
SINGLE SPAN CONCRETE ARCH BRIDGE		MULTI PLATE ARCH	
OVERALL SPAN	210'	21' 22"	
L SPAN	170'	15' 0"	
CLEAR SPAN	170'	15' 0"	
CLEAR HEIGHT	20'	8' 6"	
ROADWAY WIDTH	16.0'	22' 0"	
POOR CONDITION SOUTH ABUT. SHOWS CRACK EXTENDING INTO ARCH			

STONE FILL FOR SLOPE PROTECTION Lt Chan Sta 8+50-9+00  
 UNCLASSIFIED CHANNEL EXCAVATION Lt Chan Sta 8+50-9+00 12+50-13+30 13+95-14+50  
 STONE FILL (HEAVY TYPE) Lt 12+50-13+30 13+95-14+50  
 RIPRAP FOR BANK PROTECTION Lt 14+20-14+63 13+64-14+16  
 TWO CABLE GUARD RAIL Lt 14+00-14+63 12+50-13+30 14+00-14+63 12+40-13+00

PLAN  
 DATE: 12/23/83  
 DRAWN BY: J.S.B.  
 CHECKED BY: J.S.B.  
 IN CHARGE: J.S.B.

PROFILE  
 DATE: 12/23/83  
 DRAWN BY: J.S.B.  
 CHECKED BY: J.S.B.  
 IN CHARGE: J.S.B.



PLAN SCALE  
 0 20 40 FEET

PROFILE SCALE  
 HORIZ 20 FEET  
 VERT 10 FEET

WHITINGHAM  
 Proj. S-N-0107(1)  
 Sheet 5 of 15 sheets