

Vt.
112

- INDEX OF SHEETS**
- 1-4 Plans & Profile Sheets
 - 5 Details of Abutment #1
 - 6 Details of Abutment #2
 - 7 S.B. 21-1 span 0.69' (Modified as shown on sheet 2)
 - 8 S.B. 3-C Curb & Rail
 - 9 S.B. 41 Damacles, Signs & Lights
 - 10 S.B. 20 Details L, R, & General Notes
 - 11 3-36 Pipe Culvert
 - 12 3-30 Cable Guard Rail (Roadway)
 - 13-16 Roadway Cross-Sections
 - 17-24 Channel Cross-Sections

TOWN OF WHITINGHAM

Project FWA 1092-F

Pin # 00R078

Route VT 112

Date 1/1/1939

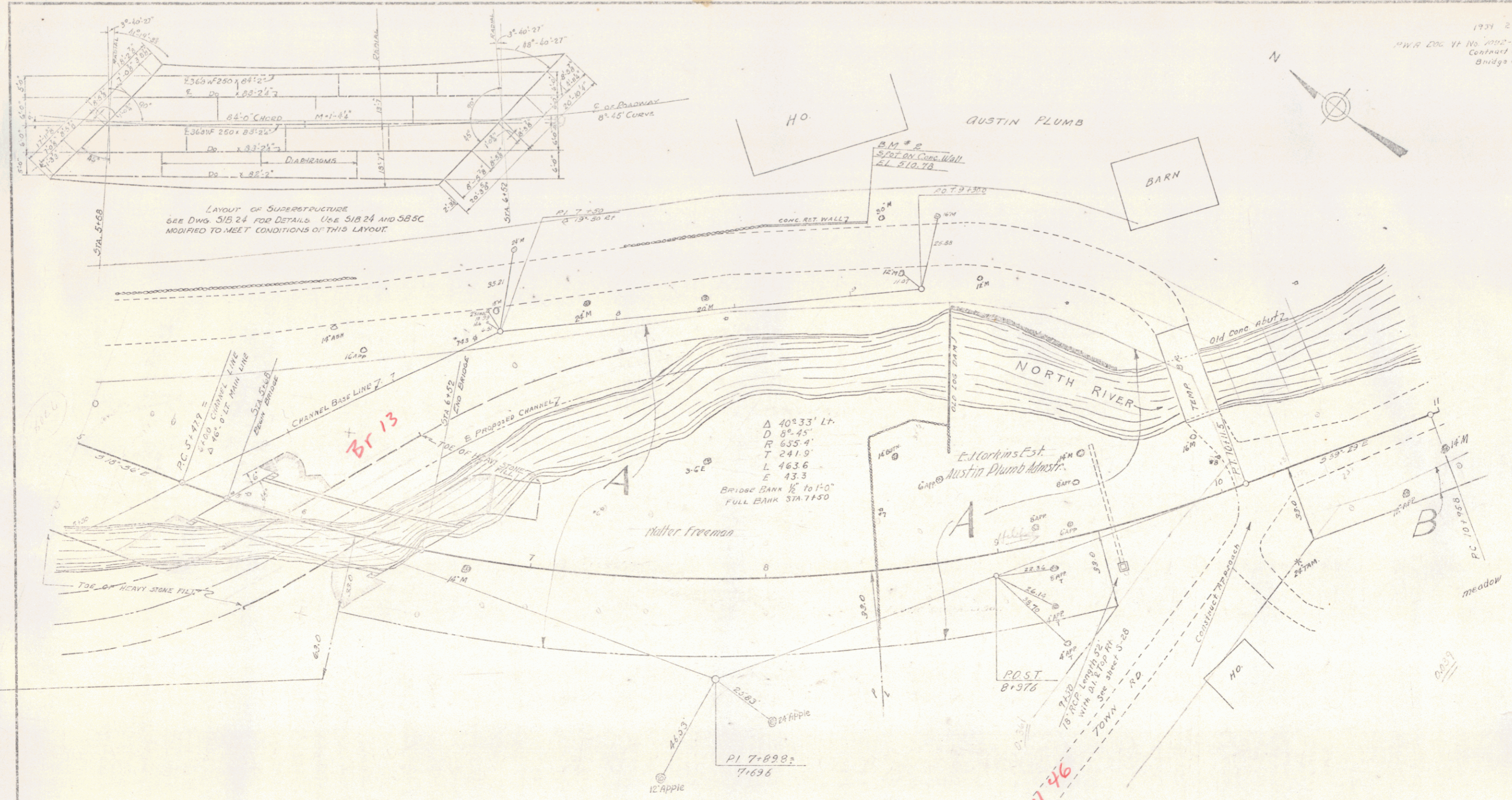
MP 0.683-0.503

NOTE: ANY EXCESS EMBANKMENT ON THIS PROJECT IS TO BE DISPOSED OF AS DIRECTED BY THE ENGINEER.

APPROVED
DISTRICT HIGHWAY COMMISSIONER
CORRECT
BRIDGE ENGINEER
APPROVED
COMMISSIONER OF HIGHWAYS

B.M. #1 S.P. 16 LIM. 42.5 FT. STA 2129 ELEV 500.0

Project No. ROAD DIST NO 103-1
Pin # 00R078



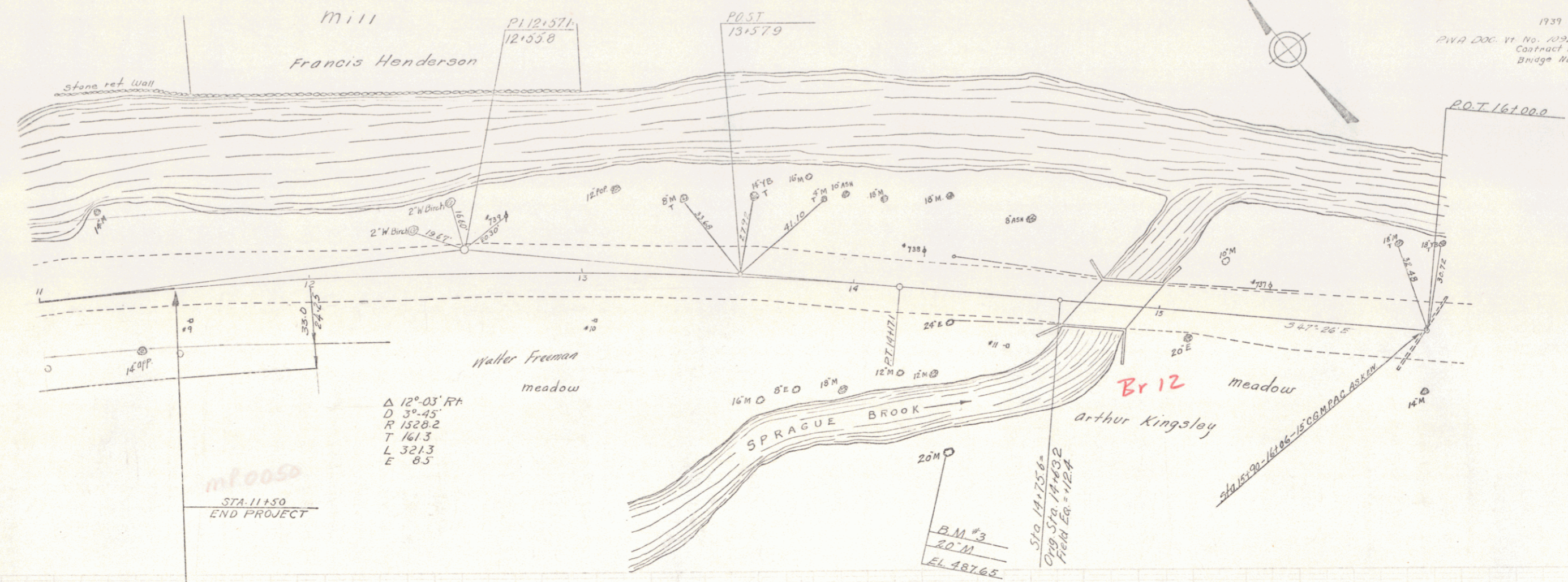
PARCEL	INSTRUMENT	DATE	GRANTOR	GRANTEE	RECORDED	REMARKS
A-B	QCD	5-21-39	WALTER S. FREEMAN	ST OF VT	37 97	3-17-39
A	VD	3-27-39	EJ. CORHINS Est.	ST OF VT	37 01	2-7-39

ESTIMATED QUANTITIES

WHITINGHAM
 PVA 200 11 No. 1052 F
 CONTRACT NO. 1
 BRIDGE NO. 3

Surveyed by F. S. BARRETT
 Designed by H. R. CALLAWAY
 Traced by H. R. CALLAWAY
 Checked by
 Series No. 2 of 24 Sheets

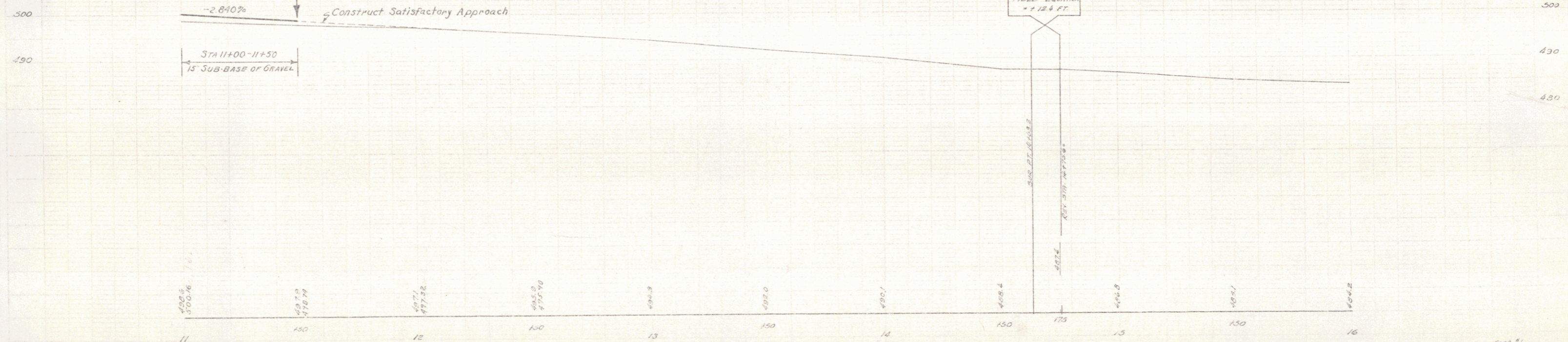
1937 4 24
 PVA DOC. Vt. No. 1225-
 Contract No. 1
 Bridge No. 3



Δ 12° 03' RA
 D 121.558
 R 1528.2
 T 161.3
 L 321.3
 E 8.5

B.M. #3
 20' M
 EL. 487.65

FIELD EQUATION
 + 12.4 FT



B.M. #3 51.8 20' M. 58 FT STA 14+40 ELEV 487.65

CONTRACT #1
 PVA DOC. Vt. No. 1225-
 CONTRACT NO. 1
 BRIDGE NO. 3
 SHEET 24 OF 24