

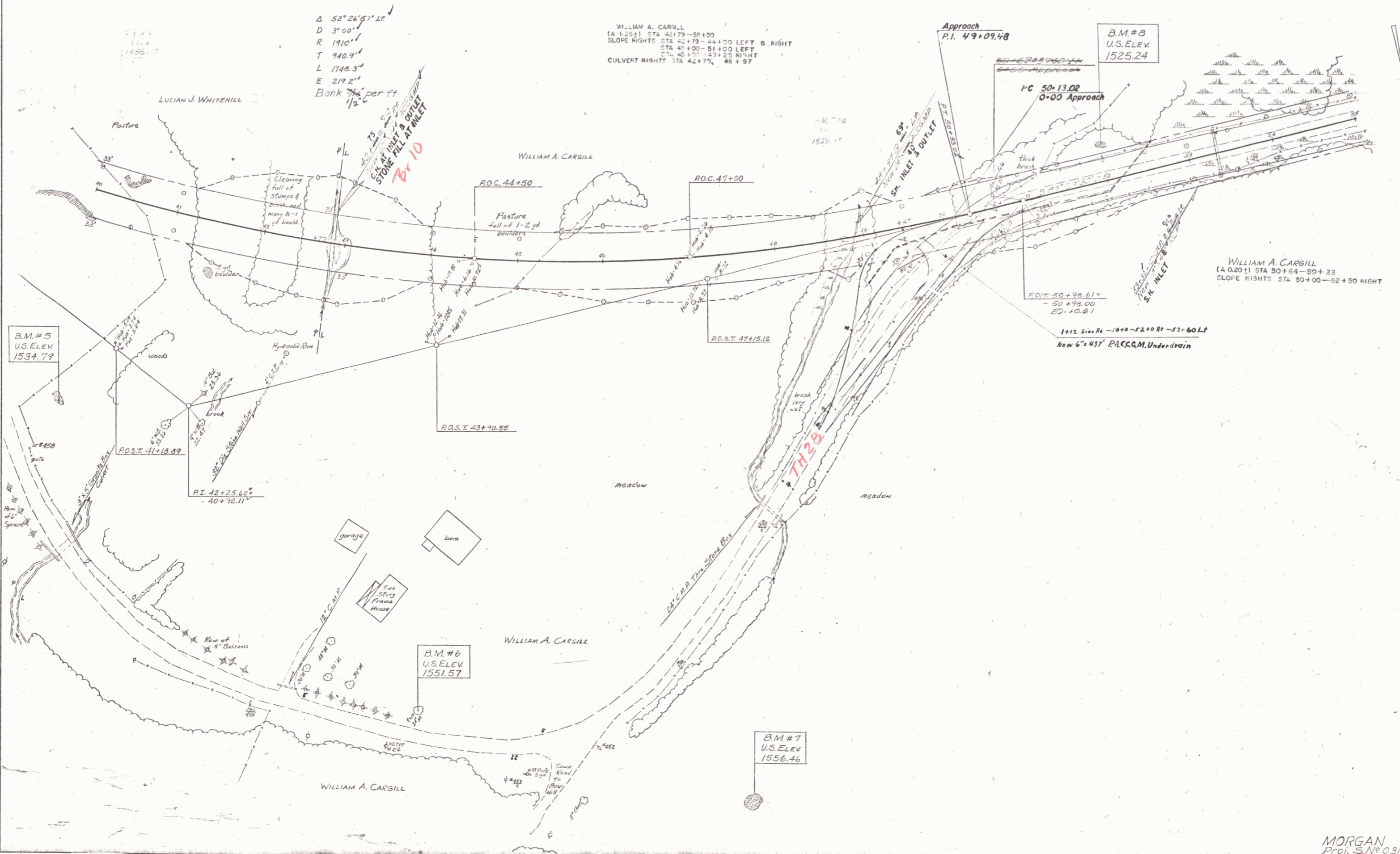
TWO CABLE GUARD RAIL
 LT
 41+0-44+20 41+0-44+04

WOOD GUIDE POSTS
 RT
 53+58-55+00

CONSTRUCT APPROACH
 LT
 51+16.62

CONSTRUCT DRIVE
 RT
 45+62
 51+20

TIMBER CURB
 41+00-44+25 LT



B.M.#5
 U.S.ELEV.
 1534.79

POST 41+18.89

P.I. 42+25.67
 -40+16.11

B.M.#6
 U.S.ELEV.
 1551.57

B.M.#7
 U.S.ELEV.
 1556.46

B.M.#8
 U.S.ELEV.
 1525.24

Approach
 P.I. 49+09.48

1-C 50+13.02
 0+00 Approach

R.O.T. 50+98.61
 -50+98.00
 E.O. 10.61

1+12 Six Ft -10+0-12+0 Rt -12+60 Lt
 New 6" x 43" P.A.C.C.M. Under-drain

WILLIAM A. CARGILL
 (A 1.25%) STA 42+79-56+50
 SLOPE RIGHTS STA 42+79-44+00 LEFT & RIGHT
 STA 45+00-51+00 LEFT
 STA 45+00-47+25 RIGHT
 CULVERT RIGHTS STA 42+79, 45+57

WILLIAM A. CARGILL
 (A 0.20%) STA 50+64-59+33
 SLOPE RIGHTS STA 50+00-52+50 RIGHT