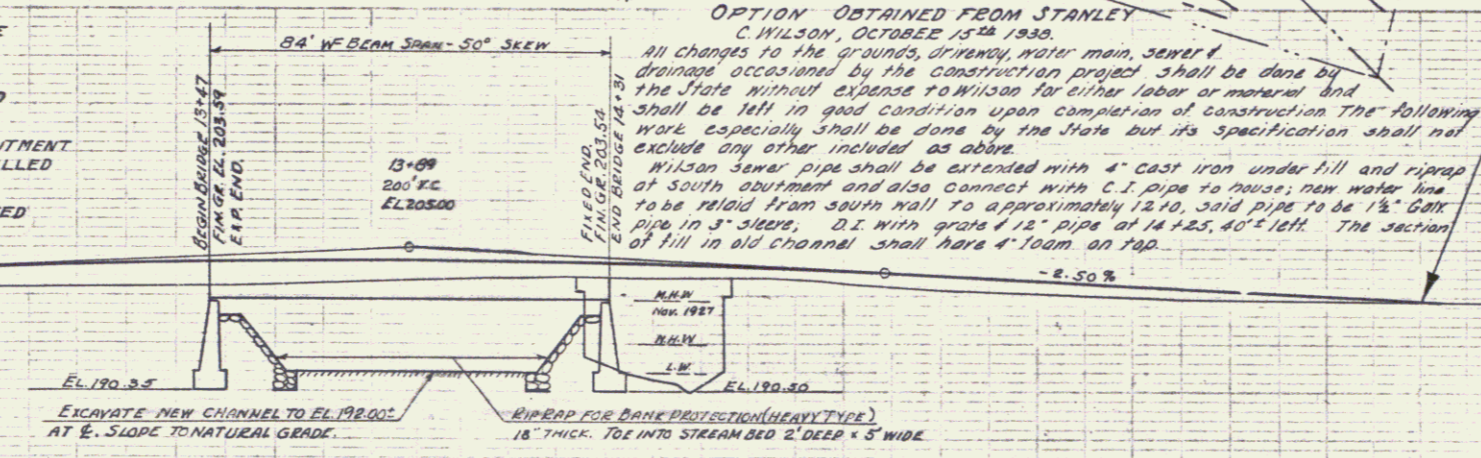


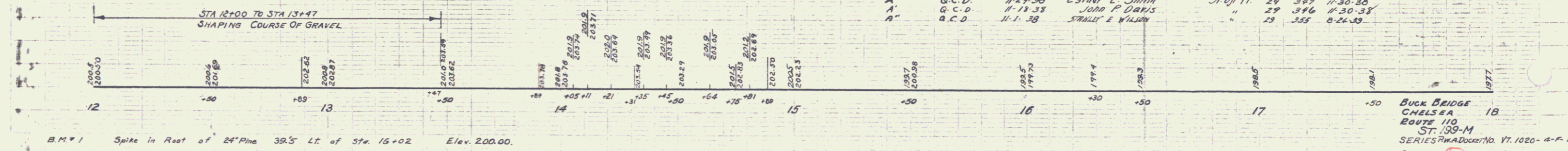
NOTE: - SATISFACTORY APPROACHES TO BE CONSTRUCTED AT BOTH BEGINNINGS AND END OF PROJECT
 EXCESS MATERIAL TO BE DISPOSED OF AS DIRECTED BY THE ENGINEER
 AREA BETWEEN NEW SOUTH ABUTMENT AND PRESENT RETAINING WALL TO BE FILLED TO ELEVATION 189.0 AS INDICATED
 NEW SIDEWALK TO BE CONSTRUCTED AS INDICATED.



NO.	ITEM	QUANTITY
100	COMMON FURNISHING	100 C
101	CHANNEL FORMATION	1485 C
102	STRUCTURE EXCAVATION	28.8 C
103	MAINTENANCE OF FILL	1 L.S.
104	SUBBASE OF GRAVEL	350 C
105	GRAVEL SURFACE COURSE	250 C
106	CONCRETE CURBS	77 C
107	"	167 C
108	STEEL BRACING STEEL	1846.0 LB
109	STEEL SUPERSTRUCTURE (I-BEAMS)	1 L.S.
110	STANDARD UNDERDRAIN	10 LF
111	TEMPORARY BRIDGE	1 L.S.
112	REINFORCED CONCRETE SUPERSTRUCTURE	1 L.S.
113	RAILROAD SUBWAY PROTECTIVE	386 C
114	CABLE GUARD RAIL	72 LF
115	ANCHORS FOR GUARD RAIL	4 EA
116	RAILROAD RAIL	165 LF
117	CONDUIT FOR LIGHTING SYSTEM	1 L.S.

BRIDGE DATA	
TYPE	PROPOSED
OVERALL SPAN	32'
CLEAR SPAN	28' 0"
CLEAR ROADWAY	24' 0"
CLEAR HEIGHT	19' 0"
WATERWAY	19' 0"
ABUTMENTS	DRY STONE, POOR
	CONCRETE STRUS

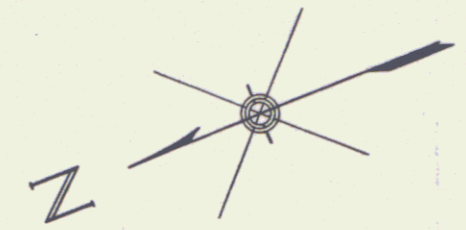
BOHRING DATA
 BORINGS #1 & 2 CARRIED DOWN 12' 6" RESPECTIVELY TO APPARENT LEDGE AT EL. 186.00. SEVERAL OTHER BORINGS ATTEMPTED BUT COULD ONLY PENETRATE TO 3' OR LESS. GENERAL CHARACTER OF SITE GRAVEL AND BOULDERS.



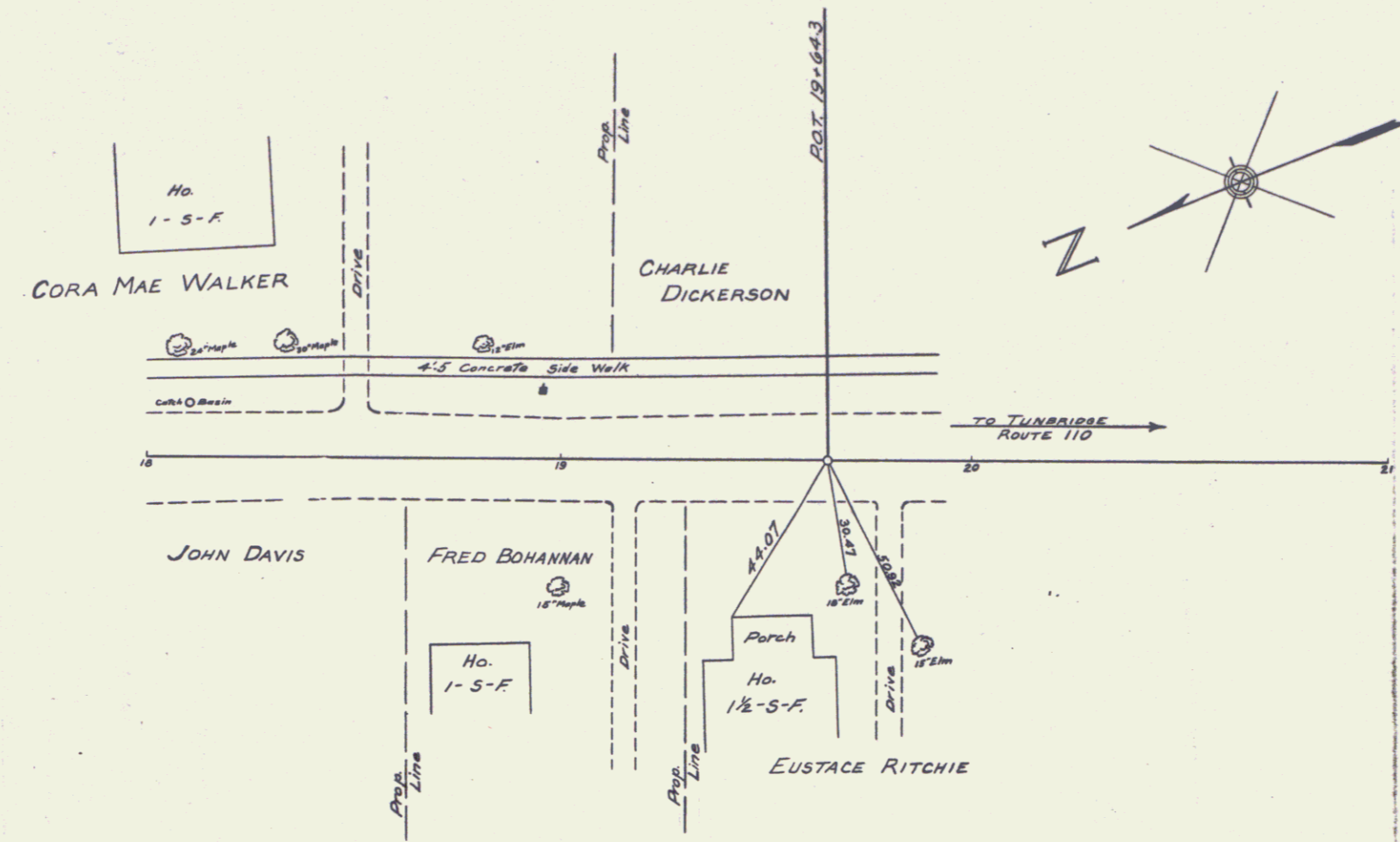
B.M. #1 Spike in Root of 24" Pine 39.5' Lt. of Sta. 16+02 Elev. 200.00.

BUCK BRIDGE
 CHELSEA
 ROUTE 110
 ST. 39-M
 SERIES PLAN DOCKET No. VT. 1020-4-F-B
 SHEET 2 of 13

SHEET NO. 5 OF 15
 DATE 1932
 PWA Vt. DOCKET 1020-4-F-B

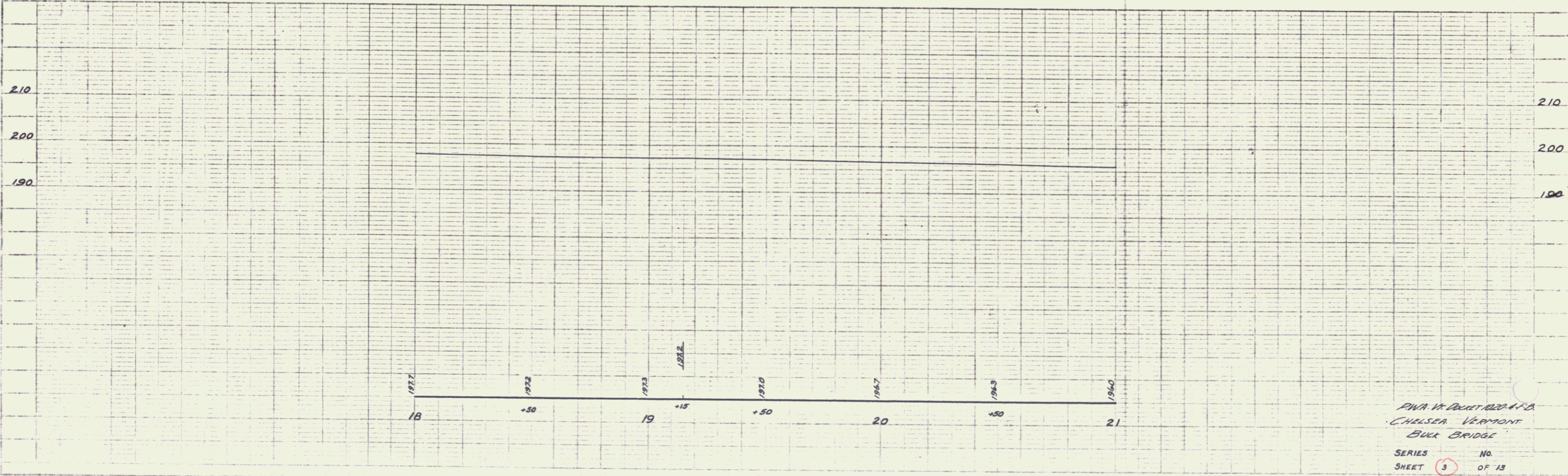


(To Be Returned To R.O.W. Division)
 Town of U+110
 PERPETUAL
 HIGH-OF-WAY DIVISION
 MP 3.32
 B-#11



DAY COLLINS
 CELESTINE
 TRACED

DAY COLLINS
 PROFILE



PWA Vt. DOCKET 1020-4-F-B
 CHLSEA VERMONT
 BULK BRIDGE
 SERIES NO.
 SHEET 5 OF 15

3