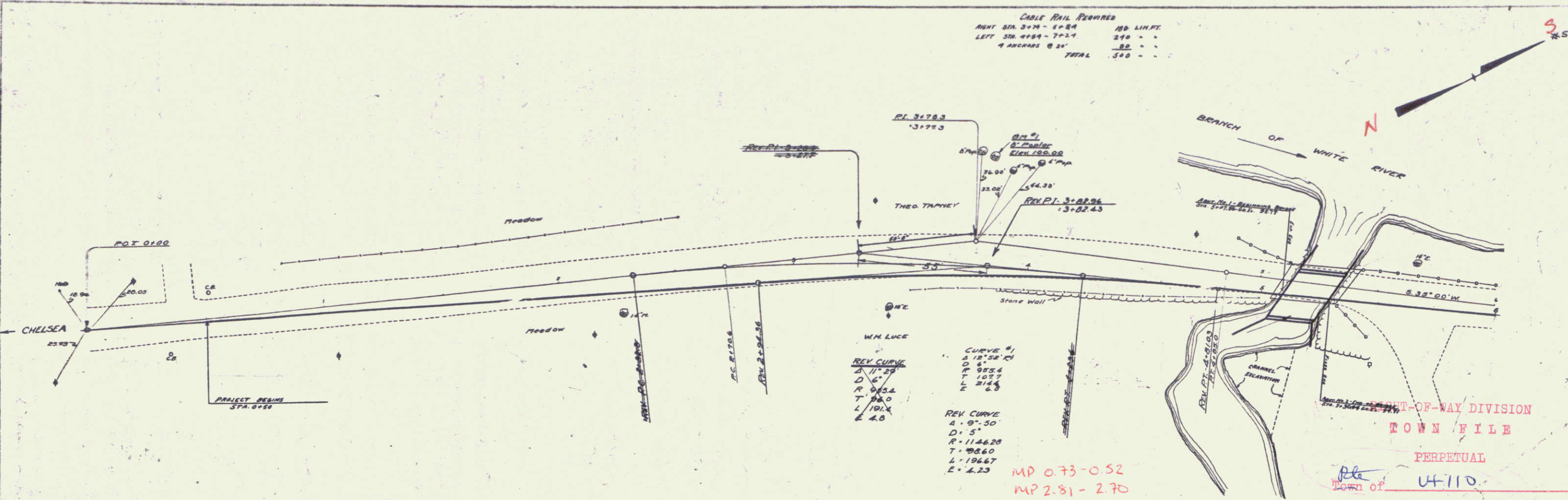


PLAN  
 SHEET NO. 1  
 PROJECT NO. CHELSEA BRIDGE  
 DATE 7/1/32  
 ROUTE VT 110



CABLE RAIL REQUIRED

RIGHT SIDE 3+75 - 4+24	148 LIN.FT.
LEFT SIDE 4+24 - 7+24	240 "
4 ARCHES @ 24'	96 "
TOTAL	484 "

REV. CURVE  
 D 11.25  
 R 955.4  
 T 98.0  
 L 101.2  
 E 4.0

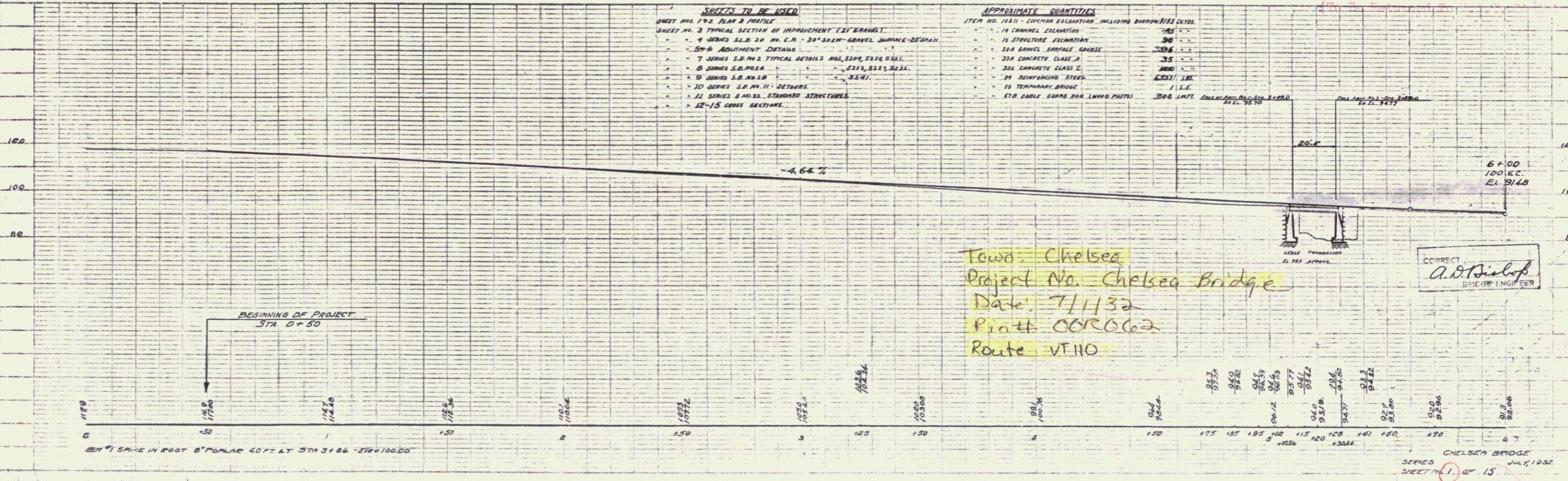
REV. CURVE  
 D 5'  
 R 1146.20  
 T 108.60  
 L 106.67  
 E 4.23

MP 0.73-0.52  
 MP 2.81-2.70

RIGHT-OF-WAY DIVISION  
 TOWN FILE  
 PERPETUAL  
 Town of VT 110

- SHEETS TO BE USED**
- SHEET NO. 1 PLAN & PROFILE
  - SHEET NO. 2 TYPICAL SECTION OF IMPROVEMENT (24' SPAN)
  - 4 SERIES S.L.B. 20 NO. C.R. 30" SLEEN-GRAVEL SURFACE-22' SPAN
  - 5-6 ADJUSTMENT DETAILS
  - 7 SERIES S.L.P. NO. 2 TYPICAL DETAILS NO. 22' SPAN
  - 8 SERIES S.L.P. NO. 2
  - 9 SERIES S.L.P. NO. 2
  - 10 SERIES S.L.P. NO. 11 - DETAILS
  - 11 SERIES & NO. 22 STANDARD STRUCTURES
  - 12-15 CROSS SECTIONS

- APPROXIMATE QUANTITIES**
- ITEM NO. 12(1) - CURB AND GUTTER INCLUDING BARRIERS CURBS 285
  - 14 CHANNEL ELEVATION 30
  - 15 STRUCTURE ELEVATION 30
  - 10A CONCRETE SURFACE CURBS 285
  - 32A CONCRETE CLASS A 35
  - 32B CONCRETE CLASS C 180
  - 24 REINFORCING STEEL 11.5
  - 25 TEMPORARY BRIDGE 11.5
  - 27D CABLE GUARD RAIL (WOOD POSTS) 308 LINE CHALACANTO, NO. 22' SPAN 22.1



Town: Chelsea  
 Project No. Chelsea Bridge  
 Date: 7/1/32  
 Print: 000062  
 Route: VT 110

CORRECT  
 A.D. Bishop  
 BRIDGE ENGINEER

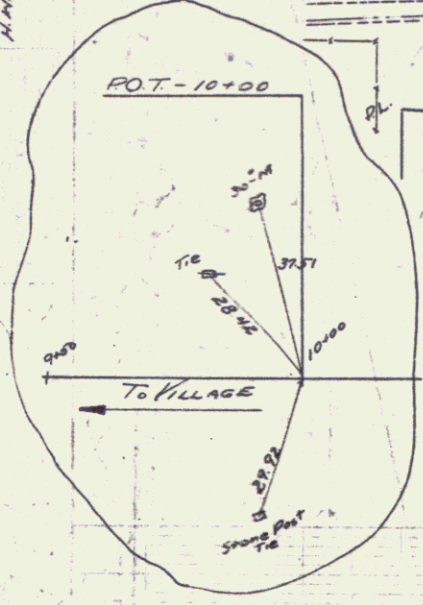
CHELSEA BRIDGE  
 SERIES  
 SHEET NO. 1 OF 15  
 JULY, 1932



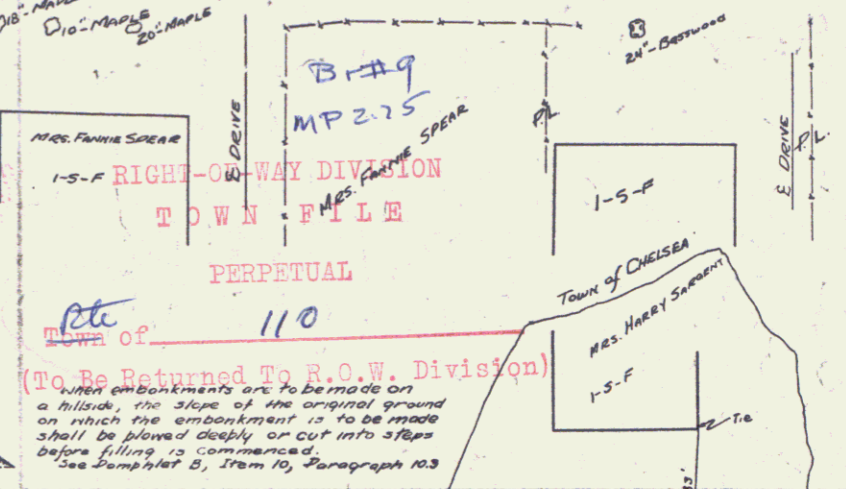
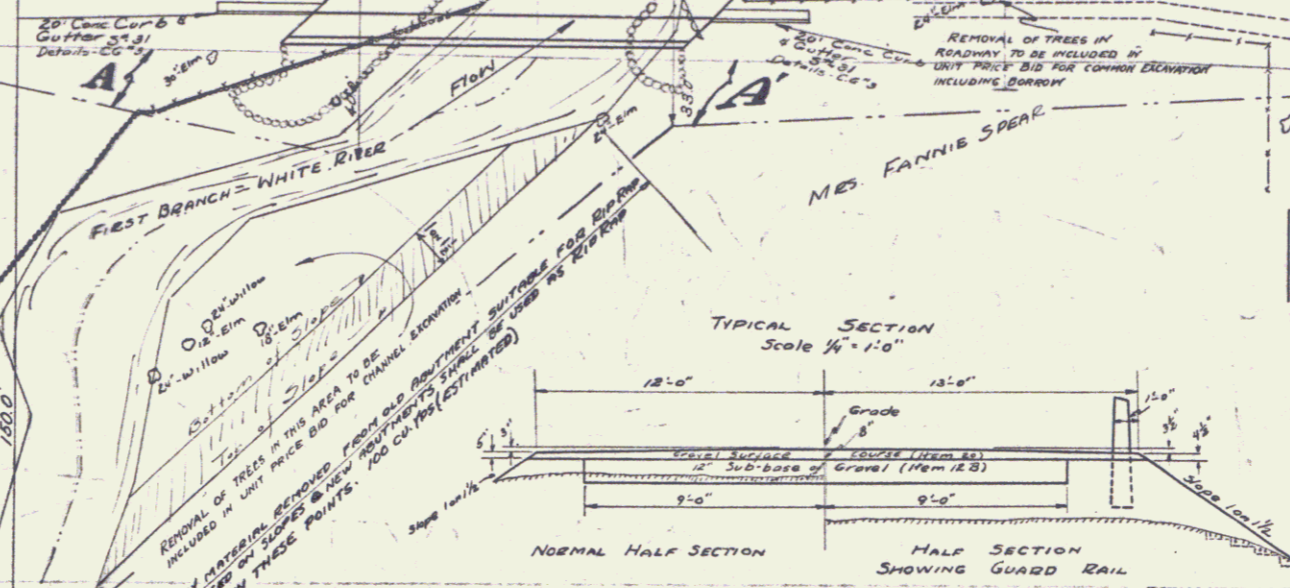
MP 2.374  
PROJECT BEGINS  
STA. 11+30

CABLE GUARD REQUIRED  
LT-STA 13+85 TO 13+88 32 L.F.  
" 14+82 TO 15+50 68 L.F.  
RT - 13+38 TO 13+70 32 L.F.  
" 14+54 TO 15+60 106 L.F.  
238 L.F. TOTAL  
\$ 100.00 MONEY

220 A  
VI Docket  
1920-0  
JAMES McLAUGHLIN



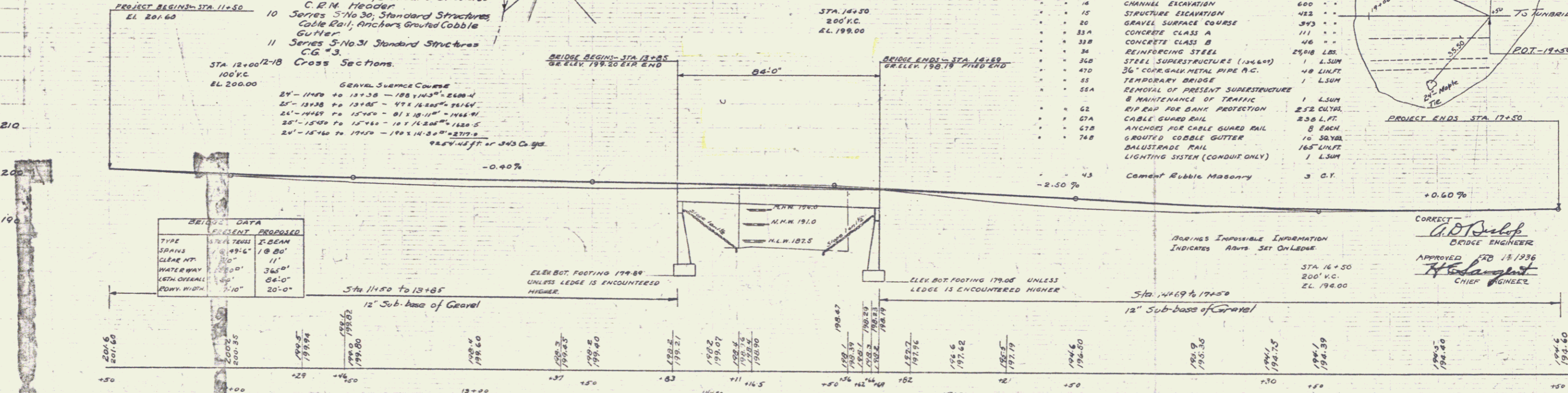
- INDEX OF SHEETS**
- 1 Plan & Profile
  - 2 518-20 25'00' Use 80' Span modified for 45' Span and 3' Sidewalk. Details 204-4-1
  - 3 Details 204-4-1
  - 4 Details 204-4-2 Sidewalk Details
  - 5 5.8" 7A Balustrade Rail
  - 6 5.8" 11 Barricades, Lights, etc.
  - 7 5.8" 20 Typical Details, details
  - 8 5-101, 5-103, 5-105, 5-111, 5-112 General Notes
  - 9 5.8" 21 Typical Details, details
  - 10 5-113, 5-115, 5-119
  - 11 Series 5-114, 20, Standard Structures C. R. M. Header
  - 12 Series 5-114, 20, Standard Structures Cable Rail; Anchors Grouted Cobble Gutter
  - 13 Series 5-114, 20, Standard Structures C. R. M.
  - 14 Series 5-114, 20, Standard Structures C. R. M.



TYPICAL SECTION Scale 1/4" = 1'-0"  
NO. 1 HALF SECTION Scale 1/4" = 1'-0"  
BRIDGE AT SOUTH END OF CHELSEA VILLAGE ON ROUTE 110

ESTIMATE OF QUANTITIES

ITEM NO.	DESCRIPTION	QUANTITY
101	COMMON EXCAVATION INCL. BORROW	365.0 CUYDS
102	SUBBASE OF GRAVEL	392.0 "
103	CHANNEL EXCAVATION	600.0 "
104	STRUCTURE EXCAVATION	422.0 "
105	GRAVEL SURFACE COURSE	393.0 "
106	CONCRETE CLASS A	111.0 "
107	CONCRETE CLASS B	416.0 "
108	REINFORCING STEEL	25918 LBS.
109	STEEL SUPERSTRUCTURE (12x6x4)	1 LSUM
110	36" CORR. GALV. METAL PIPE A.C.	48 LKFT.
111	TEMPORARY BRIDGE	1 LSUM
112	REMOVAL OF PRESENT SUPERSTRUCTURE	1 LSUM
113	MAINTENANCE OF TRAFFIC	1 LSUM
114	RIP RAP FOR BANK PROTECTION	252 CUYDS
115	CABLE GUARD RAIL	238 L.F.
116	ANCHORS FOR CABLE GUARD RAIL	8 EACH
117	GRADED COBBLE GUTTER	16 SQ. YDS.
118	BALUSTRADE RAIL	165 LKFT.
119	LIGHTING SYSTEM (CONDUIT ONLY)	1 LSUM
120	Cement Rubble Masonry	3 C.Y.



**BRIDGE DATA**

TYPE	PRESENT	PROPOSED
SPRINK	18" 18"	18" 20"
GRADE RT.	11"	11"
WATERWAY	36' 0"	36' 0"
LETH. OVERALL	64' 0"	64' 0"
DOWNY WIDTH	7' 10"	20' 0"

**PARCEL INSTRUMENT DATE GRANTEE GRANTEE RECORDED CHLSEA RECORDED DATE**

A	O.C.D.	5-19-36	HATTIE STOUGHTON	ST. OFF.	BOOK 20	PAGE 639	5-26-36
A	O.C.D.	7-7-36	FANNIE E. SPEAR		20	635	7-8-36

300' INS. IMPROPER INFORMATION INDICATES ABOVE SET ON LEGS

STATION 16+50  
200' V.C.  
E.L. 194.00

CORRECT  
A. D. Sulep  
BRIDGE ENGINEER

APPROVED 12/15/1936  
H. H. Houghton  
CHIEF ENGINEER

1740 NORTON BE.  
TOWN OF CHELSEA, VT.  
Project No. A.W.A. VI, DOCKET 1920-0  
Norton Bridge  
SHEET 7 OF 18 SHEETS