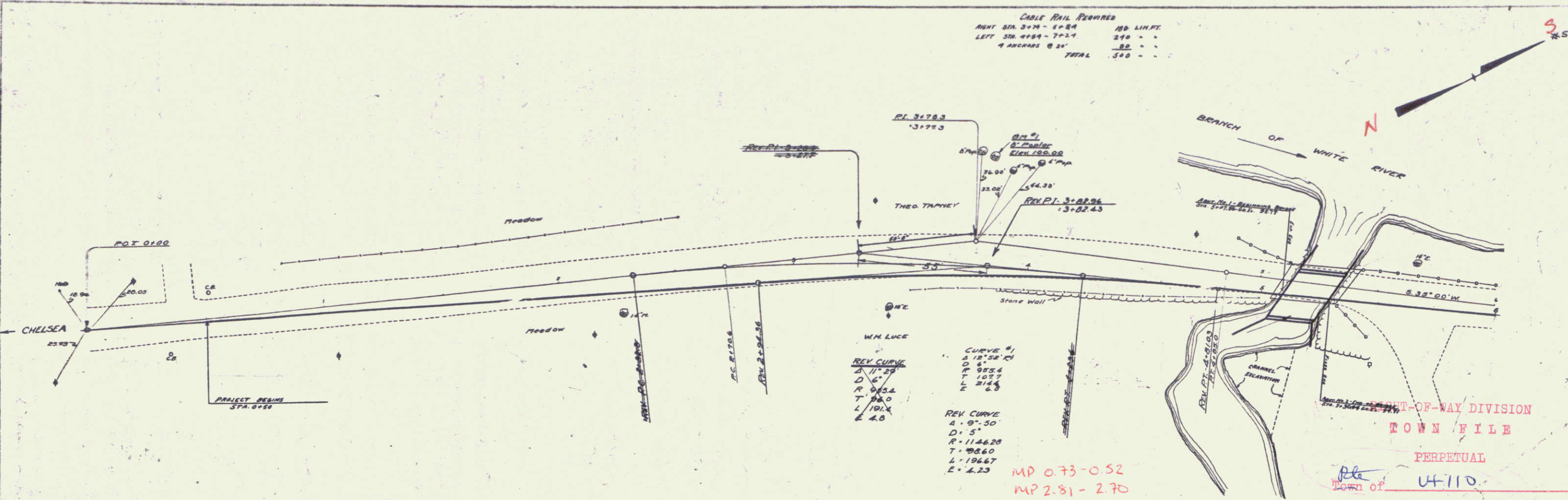


PLAN
 SHEET NO. 1
 PROJECT NO. CHELSEA BRIDGE
 DATE 7/1/32
 ROUTE VT 110



CABLE RAIL REQUIRED

RIGHT SIDE 3478 - 4784	130 LINES
LEFT SIDE 4784 - 7424	270 "
4 ARCHES @ 24'	32 "
TOTAL	530 "

REV CURVE
 D 11.25
 R 985.4
 T 98.0
 L 101.2
 E 4.0

REV CURVE
 D 5'
 R 1146.20
 T 108.60
 L 106.67
 E 4.23

MP 0.73-0.52
 MP 2.81-2.70

DEPT-OF-WAY DIVISION
 TOWN FILE
 PERPETUAL
 Town of VT 110

- SHEETS TO BE USED**
- SHEET NO. 1 PLAN & PROFILE
 - SHEET NO. 2 TYPICAL SECTION OF IMPROVEMENT (24' WIDE)
 - 4 SERIES S.L.B. 20 W. C.R. 30" SLOPE-GRAVEL SURFACE-22' WIDE
 - 5-6 ADJUSTMENT DETAILS
 - 7 SERIES S.L.P. NO. 2 TYPICAL DETAILS NOS. 3209, 3210, 3211
 - 8 SERIES S.L.P. NO. 2
 - 9 SERIES S.L.P. NO. 2
 - 10 SERIES S.L.P. NO. 11 - DETAILS
 - 11 SERIES & NO. 22 STANDARD STRUCTURES
 - 12-15 CROSS SECTIONS

- APPROXIMATE QUANTITIES**
- ITEM NO. 12(1) - CURB AND GUTTER INCLUDING BARRIERS CURBS
 - 14 CHANNEL ELEVATION
 - 15 STRUCTURE ELEVATION
 - 10A CONCRETE SURFACE CURBS
 - 32A CONCRETE CLASS A
 - 32B CONCRETE CLASS C
 - 24 REINFORCING STEEL
 - 25 TEMPORARY BRIDGE
 - 27D CABLE GUARD RAIL (WOOD POSTS)

