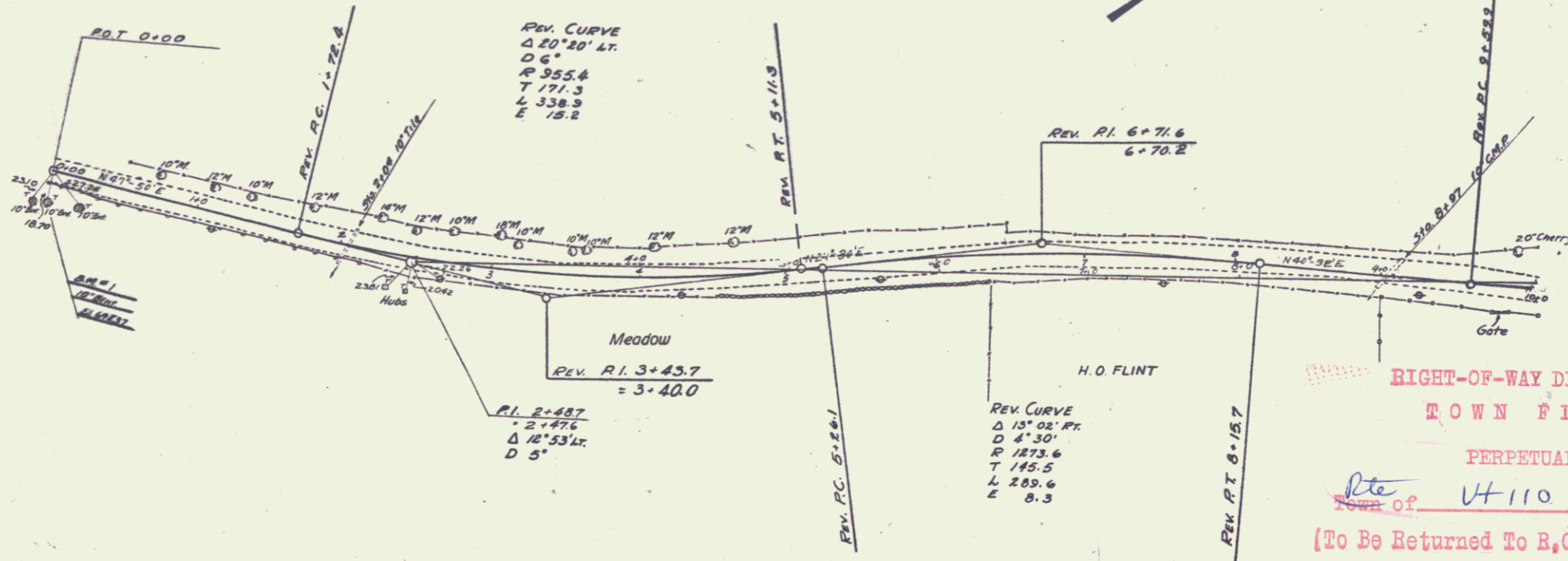


Tunbridge MP 7.391-7.934
 Chelsea MP 0.00-0.121

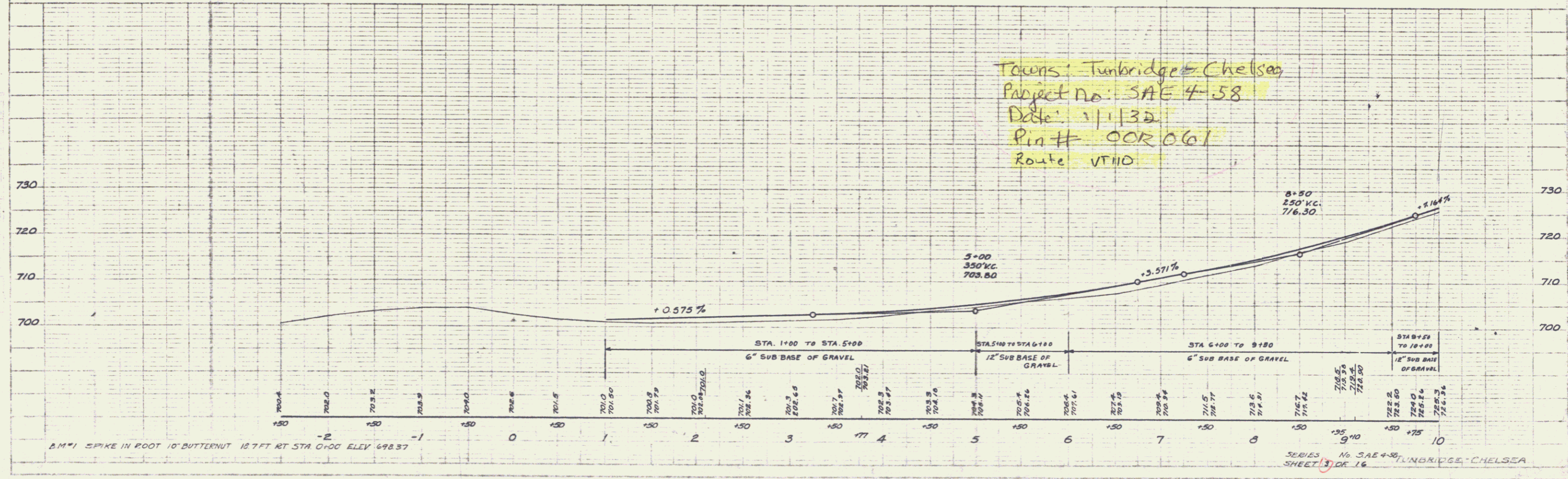
PLAN
 DRAWN BY: W. Wood
 CHECKED BY: C. M. Conover
 DATE: 11/1/32

PROFILE
 DRAWN BY: C. M. Conover
 CHECKED BY: W. Wood
 DATE: 11/1/32



RIGHT-OF-WAY DIVISION
 TOWN FILE
 PERPETUAL
 Rte of VT 110
 [To Be Returned To R.O.W. Division]

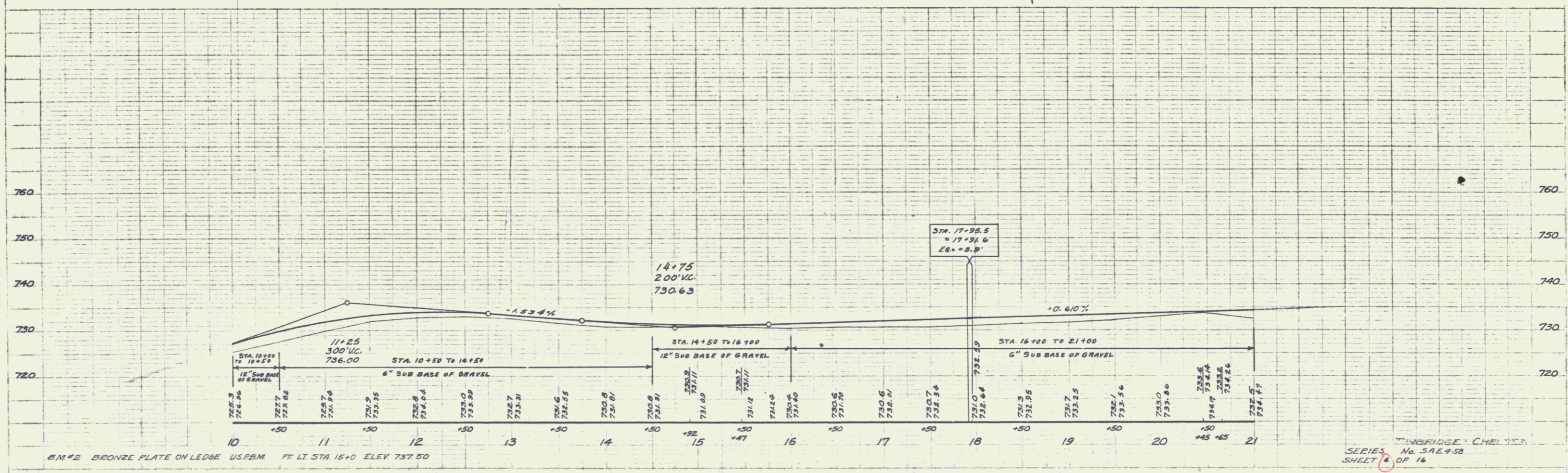
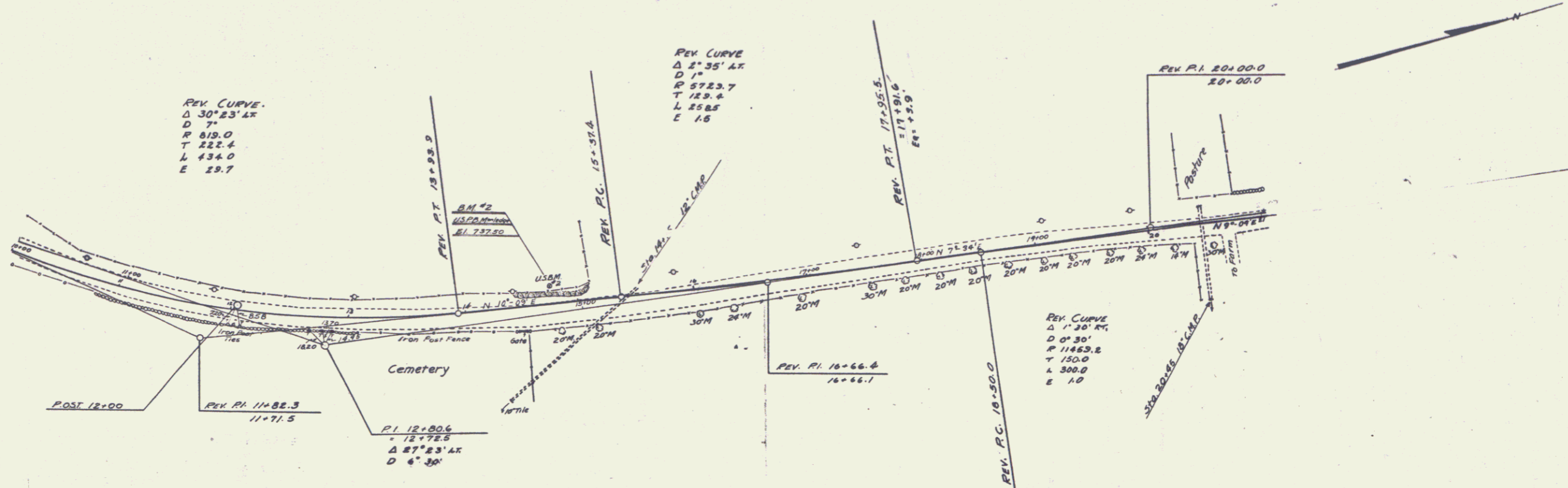
Towns: Tunbridge - Chelsea
 Project No: SAE 4-58
 Date: 11/1/32
 Pin # 002061
 Route VT 110



B.M. #1 SPIKE IN ROOT 10' BUTTERNUT 18.7 FT RT STA 0+00 ELEV 698.37

PLAN
 DRAWN BY
 CHECKED BY
 DATE

PROFILE
 DRAWN BY
 CHECKED BY
 DATE



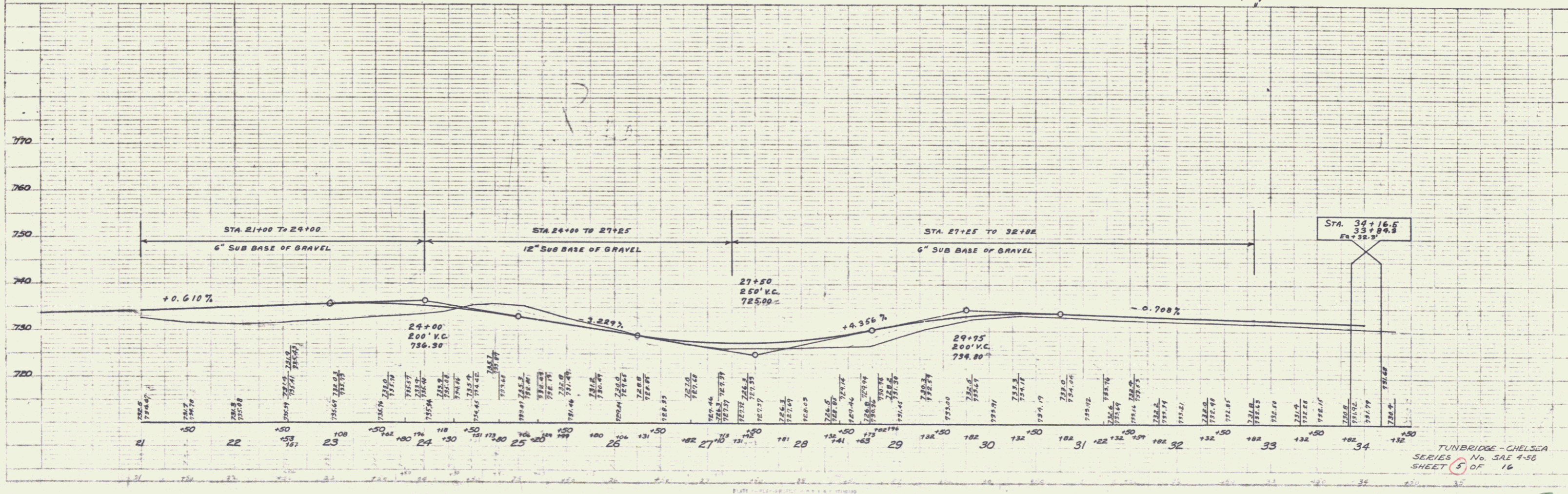
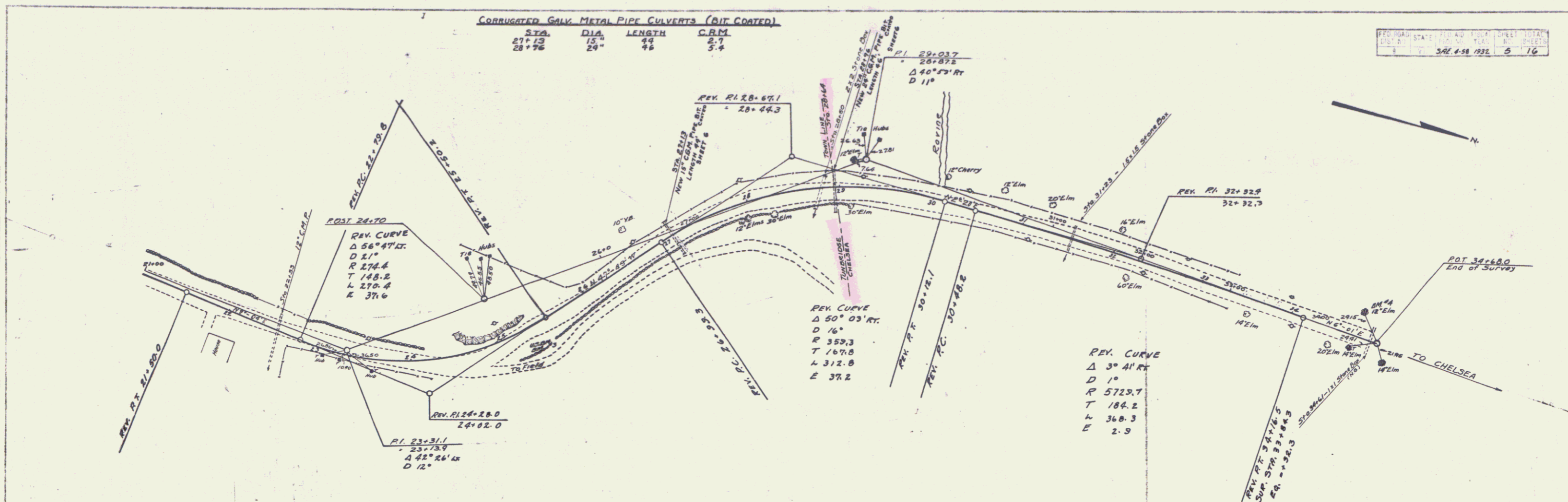
B.M.#2 BRONZE PLATE ON LEDGE U.S.P.M. FT. LT. STA. 15+0 ELEV. 737.50

TINBRIDGE CHESTER
 SERIES No. SAE-458
 SHEET 6 OF 16

CORRUGATED GALV METAL PIPE CULVERTS (BIT COATED)

STA	DIA	LENGTH	CRM
27+12	15"	44	2.7
28+76	24"	46	5.4

PROJECT	STATE	NO.	DATE	SHEET	TOTAL
	MA	34E	4-58	5	16



TUNBRIDGE-CHELSEA
 SERIES No. 34E 4-58
 SHEET 5 OF 16