

INDEX OF SHEETS

SHEET NO. 1	TITLE PAGE
" 2	TYPICAL CROSS-SECTION OF IMPROVEMENT
" 3	ROADWAY STANDARD SHEET RS 56-1
" 4	QUANTITY SHEET (ITEMS)
" 5	QUANTITY SHEET (DRAINAGE)
6-7	EARTHWORK SHEETS
8-11	PLAN AND PROFILE SHEETS
12	DETAILS OF C.G.M.P.P.A. STA. 42+07.1
13	ROADWAY STANDARD SHEET RS 56-3
14	" " " RS 56-4
15	" " " RS 56-6
16	" " " RS 56-9
17	" " " RS 56-11
18	" " " RS 56-12
19	" " " RS 56-14
20-30	CROSS SECTIONS

**STATE OF VERMONT
DEPARTMENT OF HIGHWAYS**

PROPOSED IMPROVEMENT

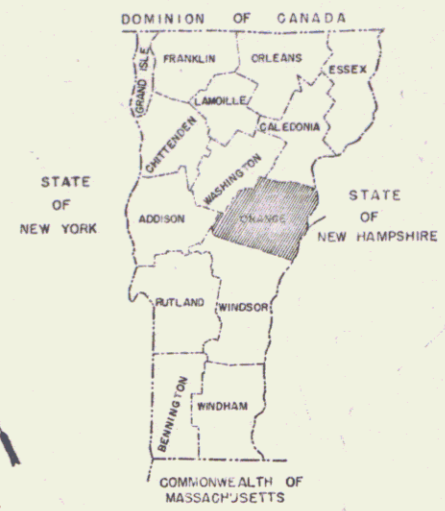
FEDERAL
AID SECONDARY PROJECT

**TOWN OF TUNBRIDGE
COUNTY OF ORANGE
SO. ROYALTON-TUNBRIDGE ROAD
VERMONT ROUTE 110**

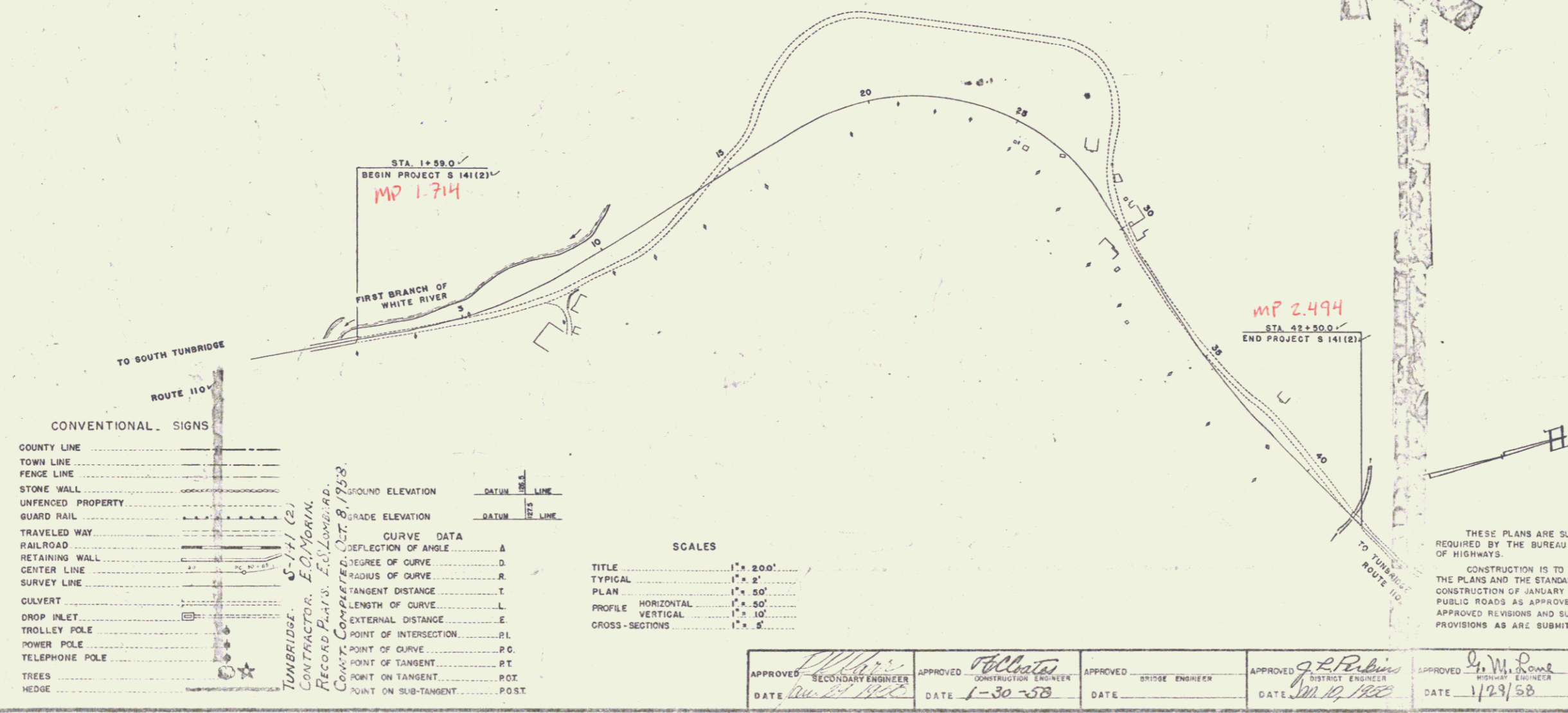
BEGINNING AT A POINT APPROXIMATELY 2.1 MILES NORTHERLY FROM THE
ROYALTON-TUNBRIDGE TOWN LINE AND EXTENDING NORTHERLY 0.775
MILES.

LENGTH OF PROJECT 4091.0 FEET = 0.775 MILES

P.D. ROAD DISTRICT NO.	STATE	PROJECT NO.	SHEET NO.	TOTAL SHEETS
1	VT	8141(2)	1	30



PROJECT NAME & NUMBER	TYPE	PAVEMENT AREA
TUNBRIDGE S-141(2)	DOUBLE TRACK	3,236 sq ft
RECORD PLANS		
MATERIALS		
SUBGRADE OF GRAVEL - Willow River Gr. & Sandstone	R.C.B. - Vermont Const. Apc. Windsor, Vt.	
RE-INS. TAR - Robbins' Galma. Everett, Mass.	ACCOM. - Northeasterly Culvert Co. Westm. Vt.	
FEAS. E - Lambert Const. Co. Sharon, Vt.	CG/NEAP	
CONTRACTOR - E.O. MORIN, So. Barre, Vt.	CONTRACT DATED - Feb. 21, 1958	
RESIDENT ENGINEER - E. MONSIEUR LOMBARD	CONSTRUCTION STARTED - Apr. 8, 1958	
INSPECTORS -	CONTRACT COMPLETED - Oct. 8, 1958	
RECORD PLANS -	CONTRACT ACCEPTED - Oct. 15, 1958	
EMMONS S. LOMBARD		



RIGHT-OF-WAY DIVISION
TOWN FILE
PERPETUAL
Town of Rte. 110
(To Be Returned To R.O.W. Division)

Pin # 000059
NOTE: ANY FURTHER INFORMATION CONCERNING FINAL QUANTITIES, POINTS OF CURVE, DETAILS RELATIVE TO THIS PROJECT MAY BE OBTAINED EITHER THE FIELD OFFICE OR THE DISTRICT ENGINEER'S OFFICE.

THESE PLANS ARE SUBJECT TO SUCH REVISIONS AS MAY BE REQUIRED BY THE BUREAU OF PUBLIC ROADS OR THE COMMISSIONER OF HIGHWAYS.
CONSTRUCTION IS TO BE CARRIED ON IN ACCORDANCE WITH THE PLANS AND THE STANDARD SPECIFICATIONS FOR HIGHWAY AND BRIDGE CONSTRUCTION OF JANUARY 1956 SUBMITTED TO THE BUREAU OF PUBLIC ROADS AS APPROVED JULY 5, 1956, INCLUDING ALL SUBSEQUENT APPROVED REVISIONS AND SUCH REVISED SPECIFICATIONS AND SPECIAL PROVISIONS AS ARE SUBMITTED WITH THE PLANS.

APPROVED [Signature] SECONDARY ENGINEER DATE [Date]	APPROVED [Signature] DISTRICT ENGINEER DATE [Date]	APPROVED [Signature] DISTRICT ENGINEER DATE [Date]	APPROVED [Signature] DISTRICT ENGINEER DATE [Date]	APPROVED [Signature] DISTRICT ENGINEER DATE [Date]
--	---	---	---	---

DEPARTMENT OF COMMERCE
BUREAU OF PUBLIC ROADS

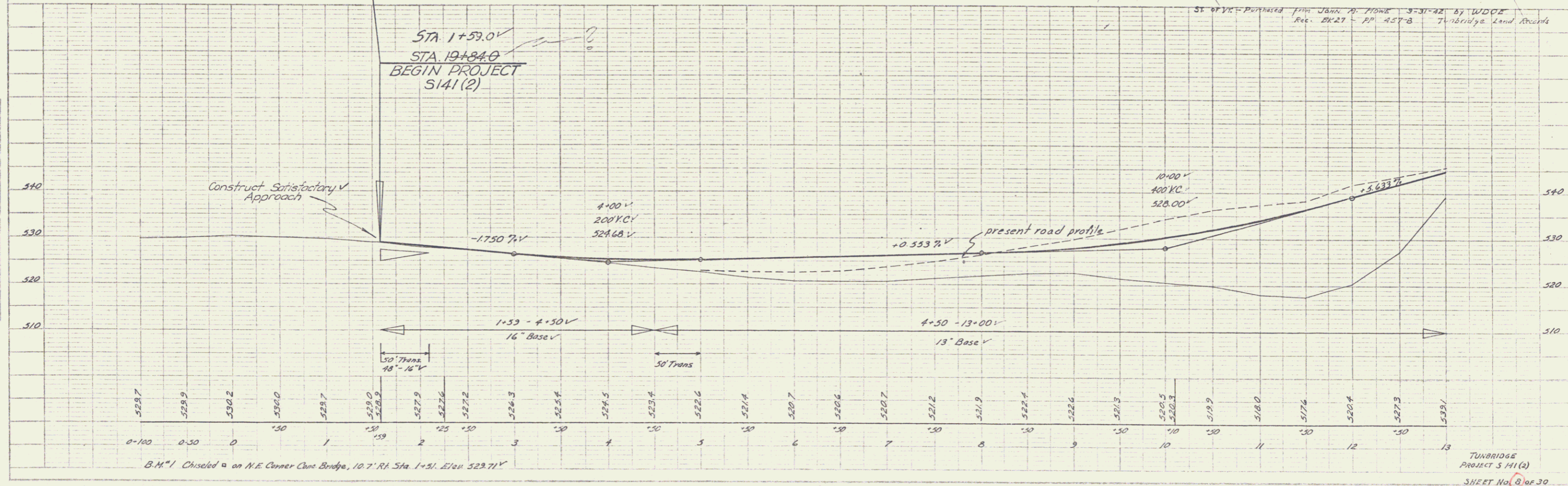
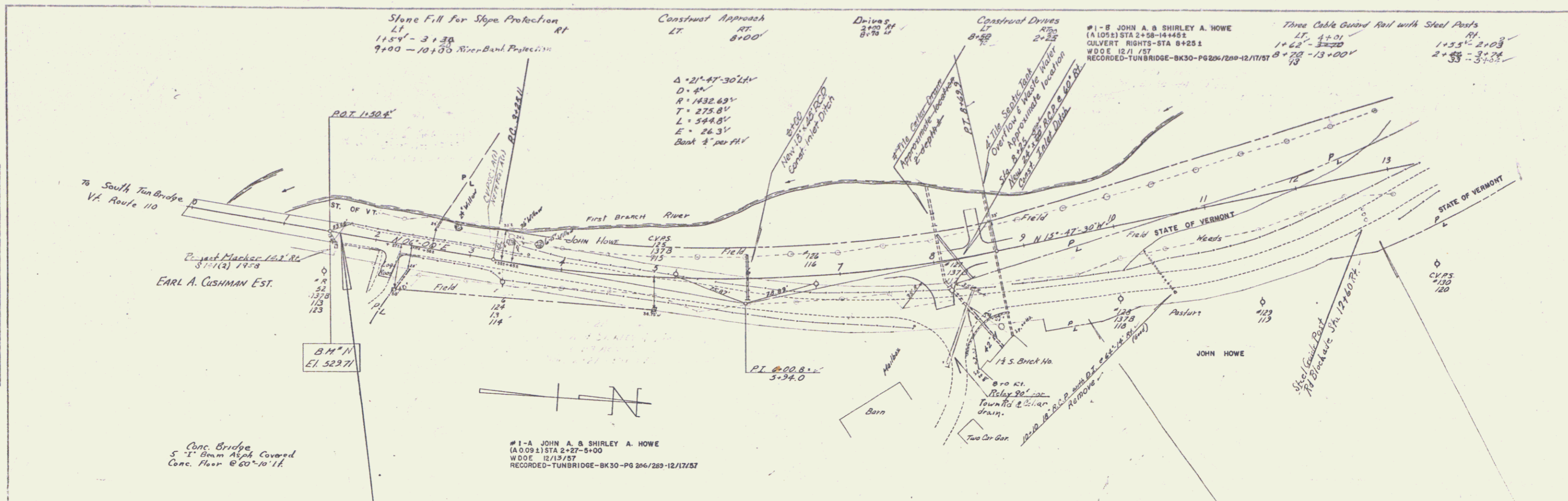
RECOMMENDED FOR APPROVAL
DISTRICT ENGINEER [Signature] DATE [Date]

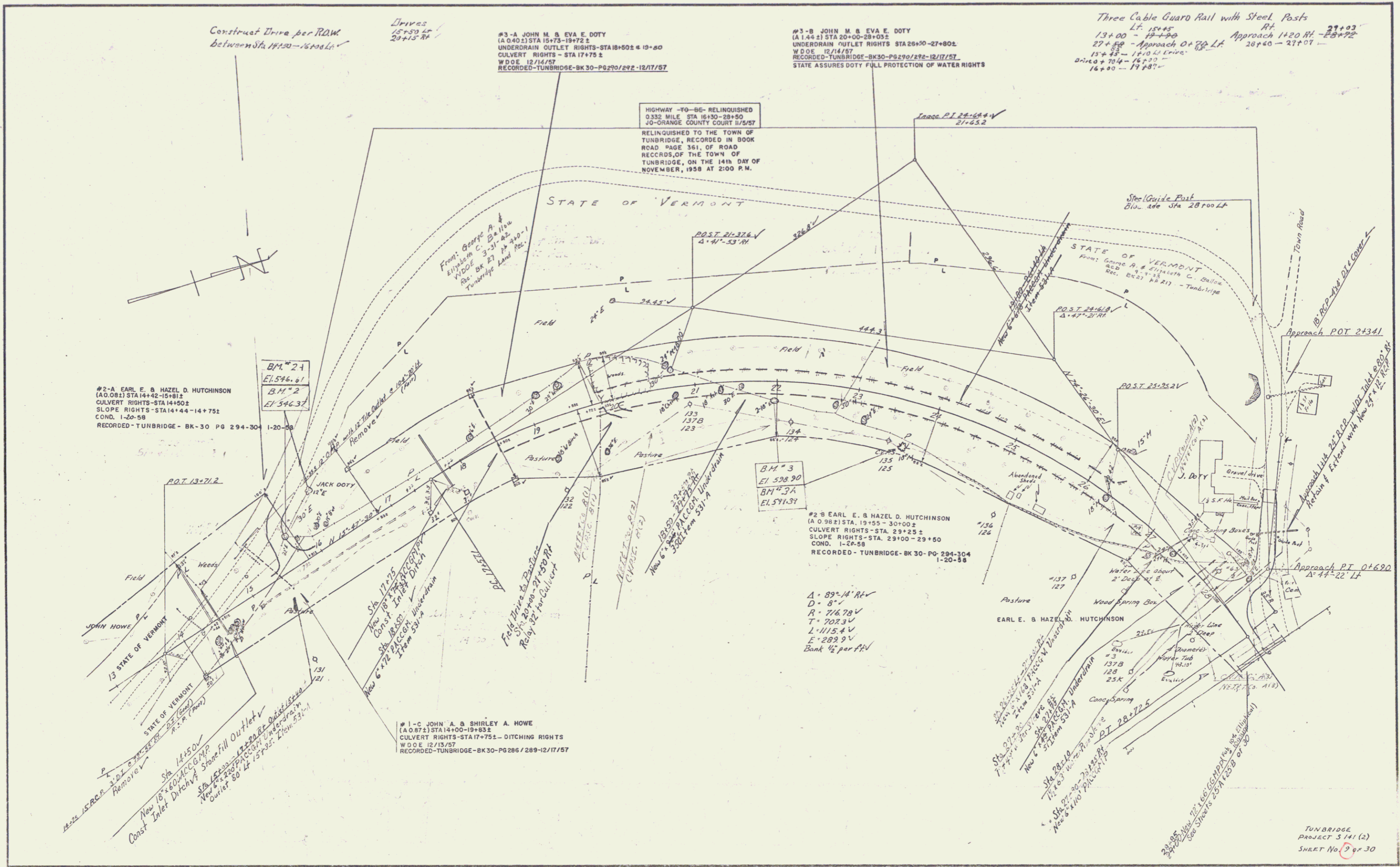
APPROVED
DIVISION ENGINEER [Signature] DATE [Date]

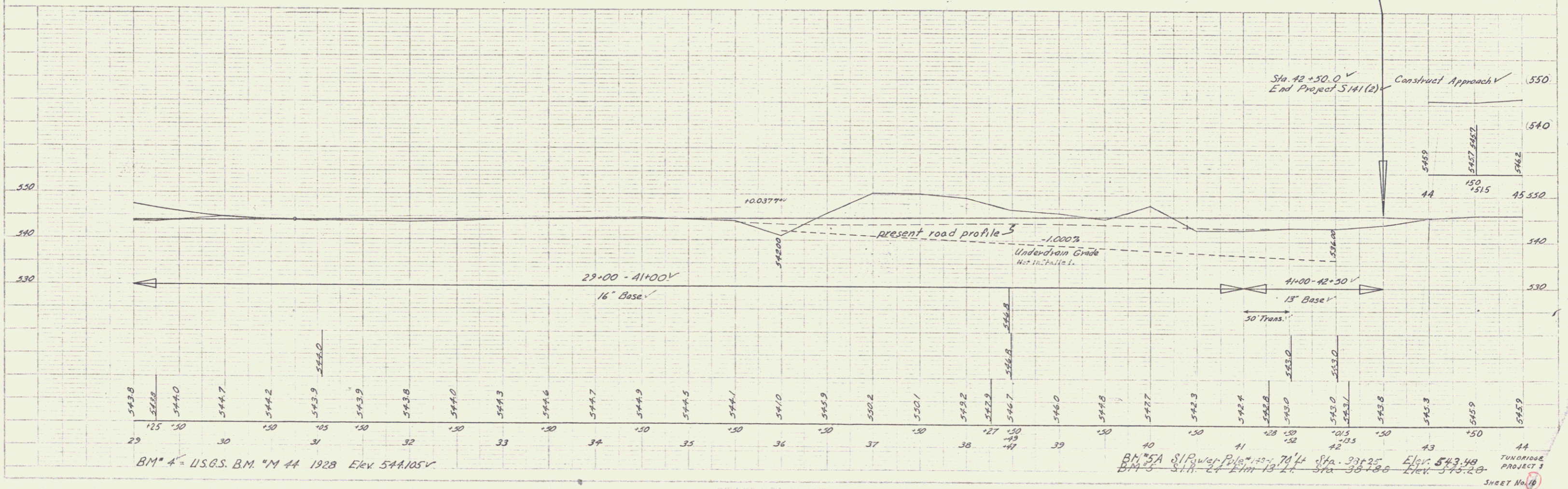
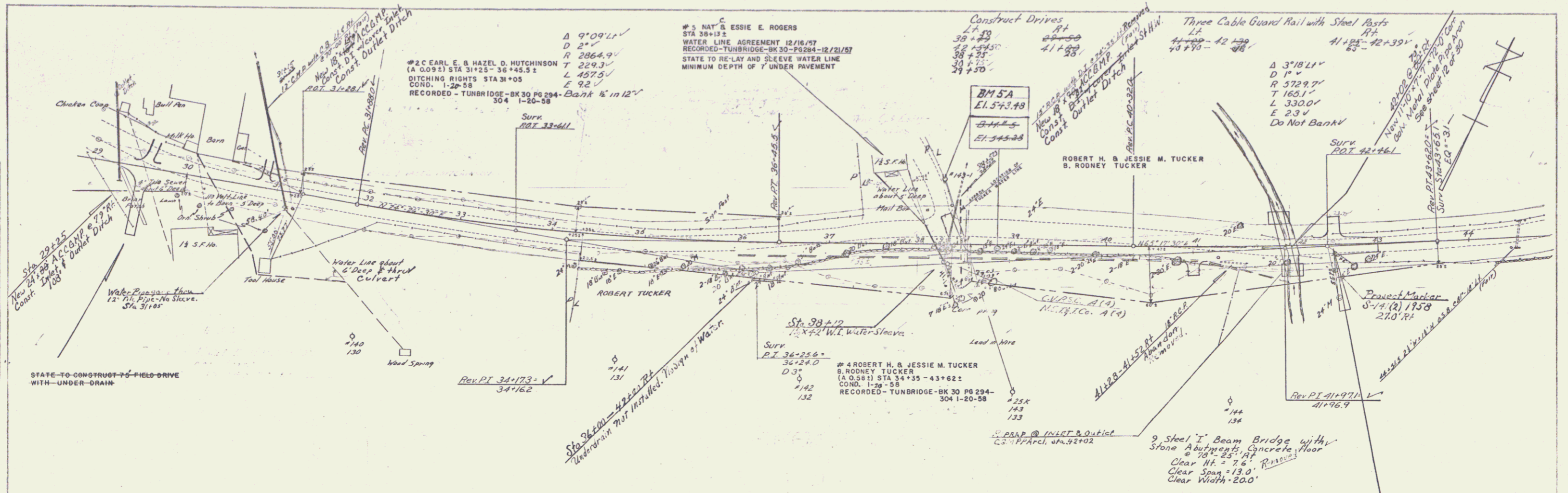
PROJECT S-141(2)
SHEET 1 OF 30 SHEETS

PLAN	DATE	BY
REVISED		
DATE		
BY		
NOTE		

PROFILE	DATE	BY
REVISED		
DATE		
BY		
NOTE		







PLAN
 SHEET NO. 16
 PROJECT 3
 TUNBRIDGE

STATE-TO-CONSTRUCT 7.5' FIELD DRIVE WITH UNDER-DRAIN

BM* 4 = U.S.G.S. BM. "M 44 1928 Elev. 544.105'

BM* 5A Elev. 543.48
 STA. 33+25 Elev. 543.29

SHEET NO. 16