

Item 549. Removal and Disposal of Present Guard Rail
 Left 5+23.5+76.5 Right 5+14.5+76.5

Construct Field Drive Right 5+00

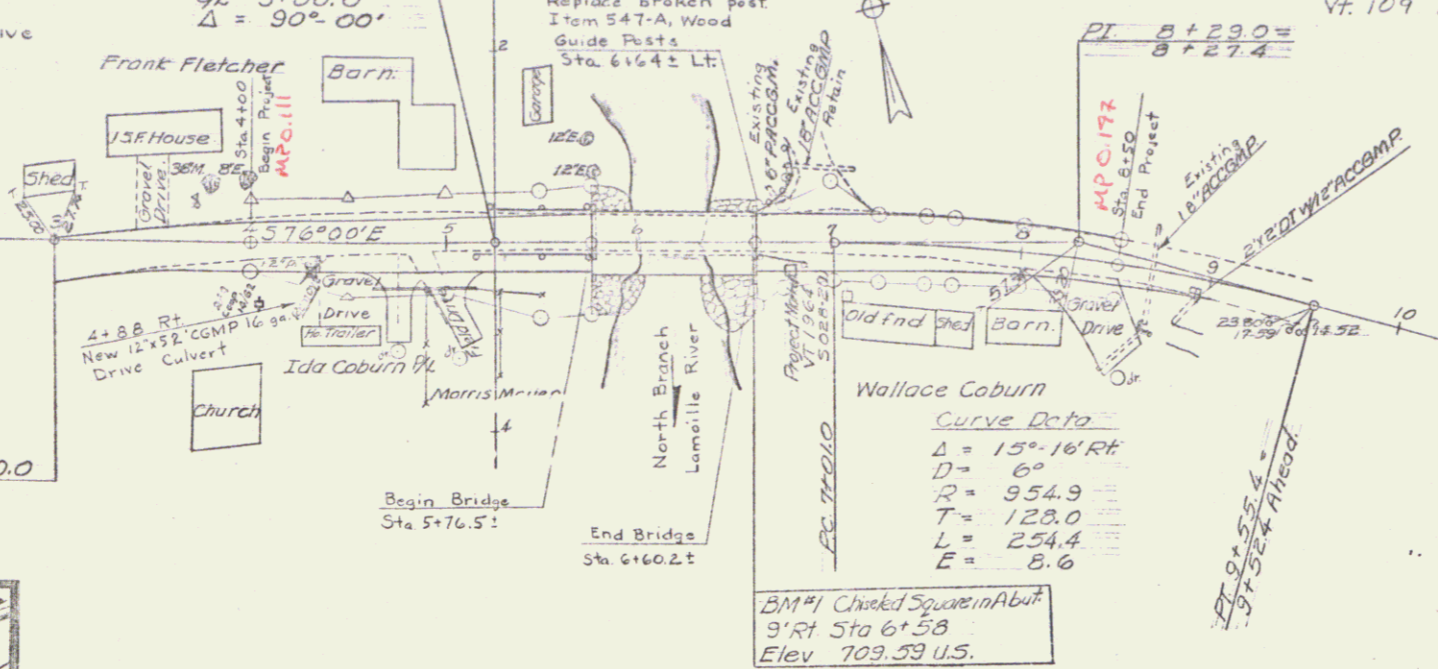
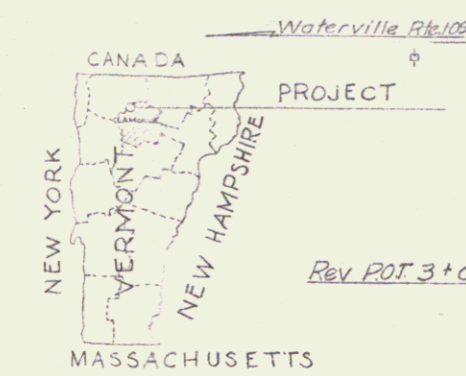
Item 541. Two Cable Guard Rail
 Sta. 5+35 - 5+76.5 Left
 Sta. 5+14 - 5+76.5 Right

Item 548-A. Removing and Resetting Two Cable Guard Rail with Wood Posts
 Sta. 6+00.2 - 6+79 Left
 Sta. 6+60.2 - 6+85 Right

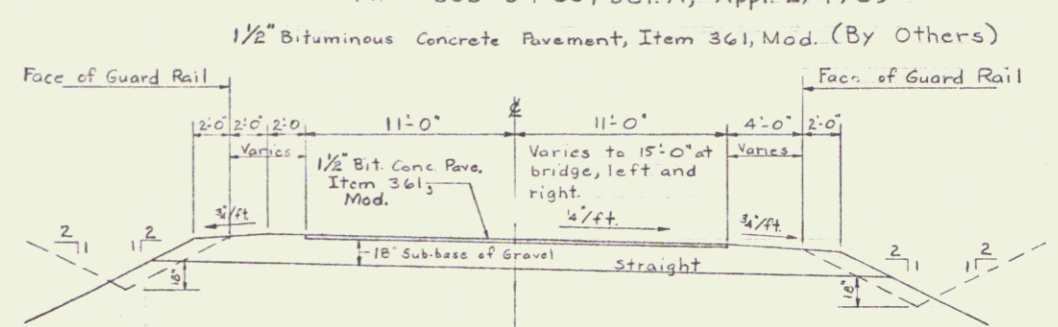
Present Bridge Data
 Type Conc I-Beam Bridge
 Overall Span 84.0'
 Clear Span 79.0'
 Clear Height 21.0'
 Roadway Width 20.0'
 Vt. 109 Bridge #7

- LIST OF SHEETS**
1. Plan and Profiles
 2. Bridge Quantity Sheet
 3. Plan, Elevation & Borings
 4. Superstructure Details
 5. Abutment #1 Details
 6. Abutment #2 Details
 7. Reinforcing Schedule
 8. Roadway Sections
 9. Channel Sections
 10. E-33, Appr. 1/6/67
 11. G-2a, Appr. 3/10/65
 12. G-3, Rev. 9/1/66
 13. SCB-D1-65, Rev. 2/14/66
 14. SCB-D7-65, Det. D, Appr. 2/4/65
 15. SCB-D9-65, Det. A, Appr. 2/4/65

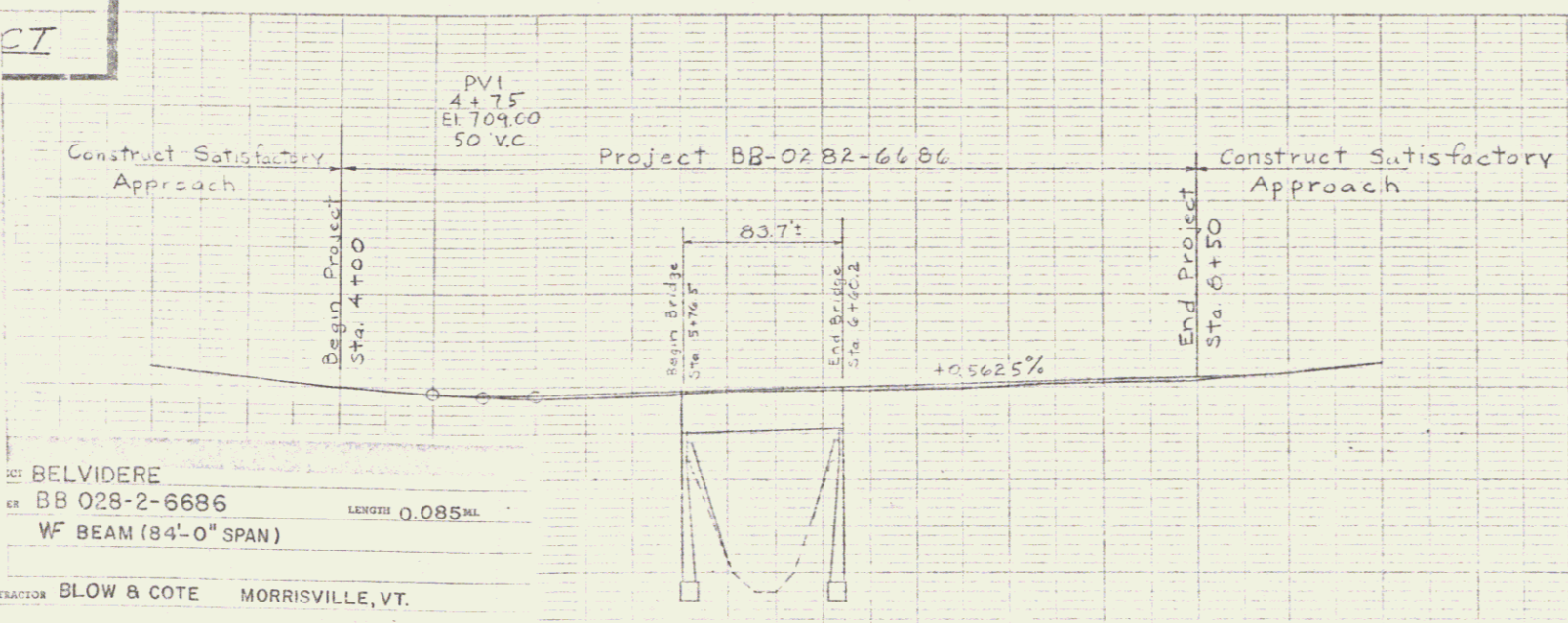
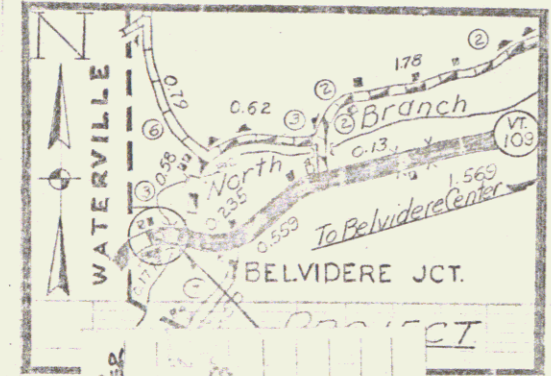
Note
 Drives are to be constructed with a minimum width of 12 feet and a flare radius of at least 15 feet.



Construct Drive RT. 8+40



Beginning at a point on Vt. Rte. 109 0.15 miles east of the Waterville - Belvidere town line and extending easterly 0.085 miles.
 Length of Project 450 feet = 0.085 miles



BELVIDERE
 #B 028-2-6686

VERMONT STR. STEEL
 T. GRISWOLD

TOWN OF BELVIDERE
 Project BB-0282-6686
 Pin # 000056
 Route VT 109
 Date 9/1/1967

ANDERSON
 BLOW & COTE
 A. NEWTON
 F. THORNE

FEB 15, 68
 MAR 16, 68
 AUG 1, 68
 AUG 2, 68

BELVIDERE BB028-2-668
 CONTRACTOR - BLOW & COTE
 MORRISVILLE
 RES. ENGR. - A. J. NEWTON
 RECORD PLANS - F. THORNE

BELVIDERE
 BB 028-2-6686
 LENGTH 0.085 MI.
 WF BEAM (84'-0" SPAN)
 CONTRACTOR BLOW & COTE MORRISVILLE, VT.
 YEAR 1968
 LOCATION Beginning at a point on Vt. Rte. 109 0.15 miles east of the Waterville - Belvidere town line and extending easterly 0.085 miles

Recommended by M. Blanchard 9/1/67
 For Approval District Engineer Date
 Recommended by W. Egan 2-1-68
 For Approval Bridge Engineer Date
 Recommended by J. L. ... 9/1/67
 For Approval Construction Engineer Date
 Recommended by W. ... 4/1/67
 For Approval Assistant Chief Engineer Date
 Approved by ... 1/1/68
 Chief Engineer Date

Town BELVIDERE
 Proj. no. BB-0282-6686
 Scale: 1" = 50'
 Vt. Rte. 109 over North Branch of Lamoille River