

Item 549. Removal and Disposal of Present Guard Rail
 Left 5+23.5+76.5 Right 5+14.5+76.5

Construct Field Drive Right 5+00

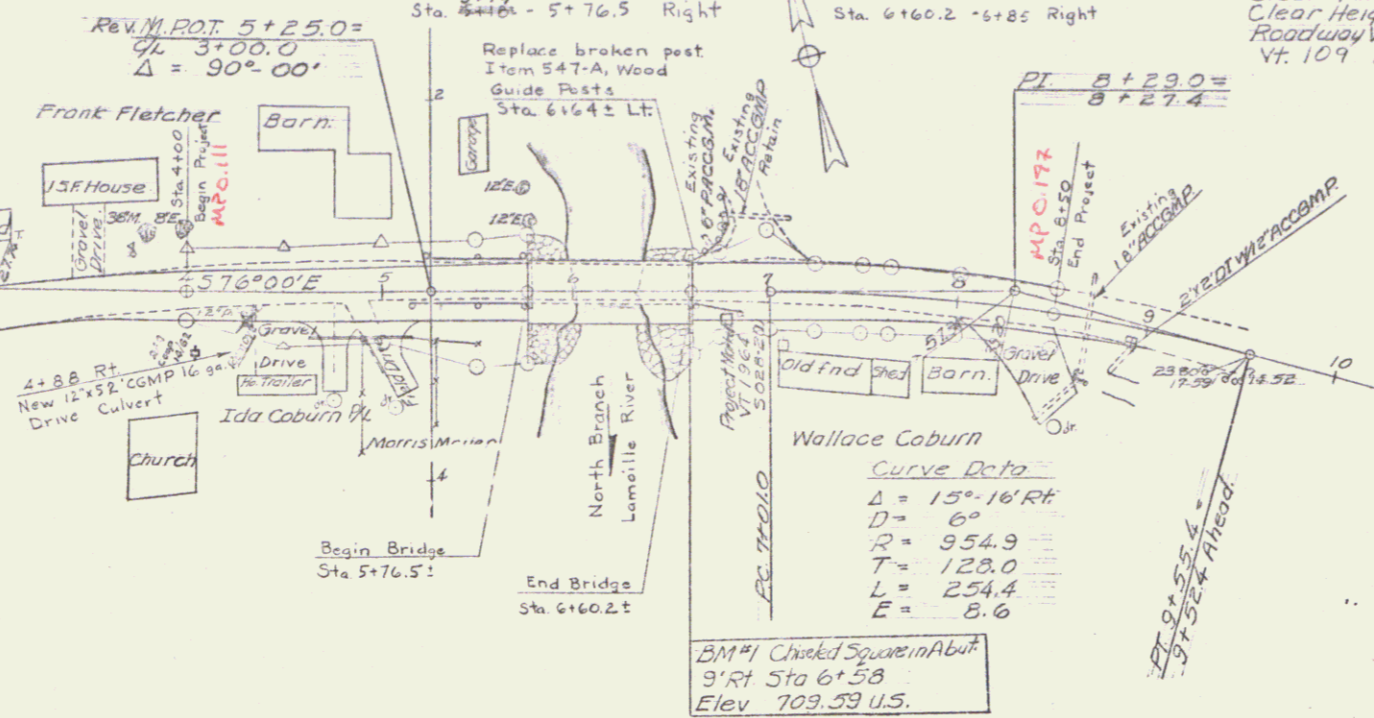
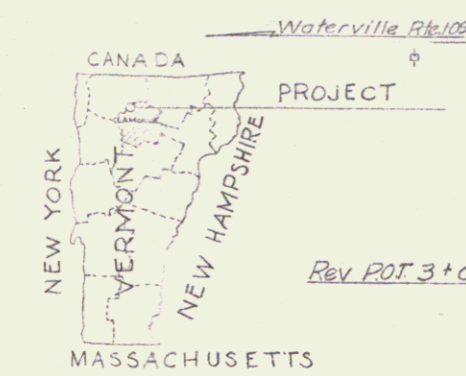
Item 541. Two Cable Guard Rail
 Sta. 5+35 - 5+76.5 Left
 Sta. 5+14 - 5+76.5 Right

Item 548-A. Removing and Resetting Two Cable Guard Rail with Wood Posts
 Sta. 6+00.2 - 6+79 Left
 Sta. 6+60.2 - 6+85 Right

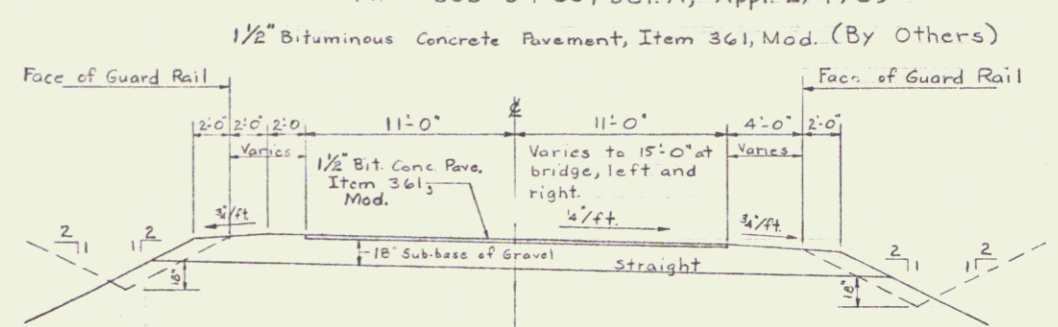
Present Bridge Data
 Type Conc I-Beam Bridge
 Overall Span 84.0'
 Clear Span 79.0'
 Clear Height 21.0'
 Roadway Width 20.0'
 Vt. 109 Bridge #7

- LIST OF SHEETS**
1. Plan and Profiles
 2. Bridge Quantity Sheet
 3. Plan, Elevation & Borings
 4. Superstructure Details
 5. Abutment #1 Details
 6. Abutment #2 Details
 7. Reinforcing Schedule
 8. Roadway Sections
 9. Channel Sections
 10. E-33, Appr. 1/6/67
 11. G-2a, Appr. 3/10/65
 12. G-3, Rev. 9/1/66
 13. SCB-D1-65, Rev. 2/14/66
 14. SCB-D7-65, Det. D, Appr. 2/4/65
 15. SCB-D9-65, Det. A, Appr. 2/4/65

Note: Drives are to be constructed with a minimum width of 12 feet and a flare radius of at least 15 feet.

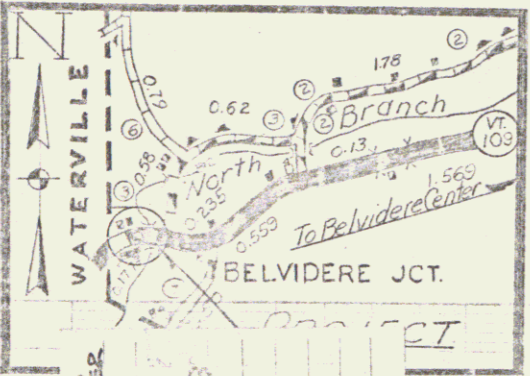


Construct Drive Rt. 8+40

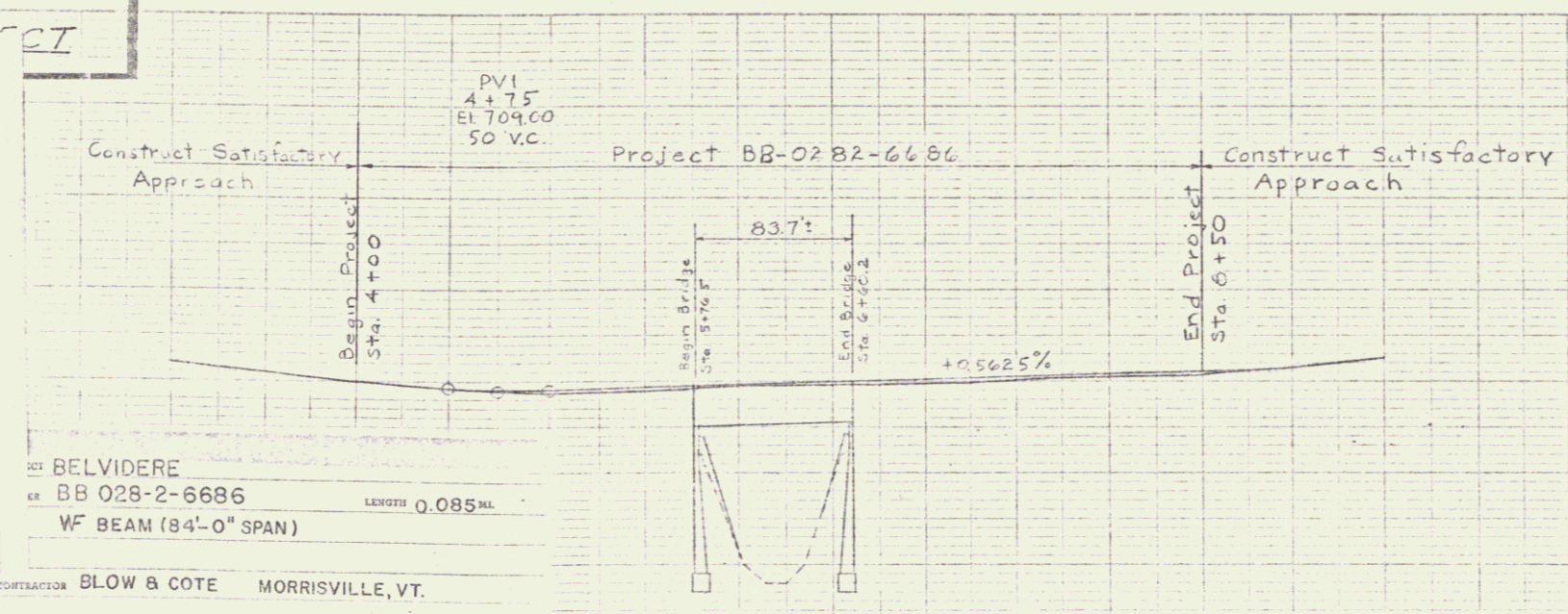


TYPICAL SECTION - V.T. DIVISION
 SCALE 1" = 5'

Beginning at a point on Vt. Rte. 109 0.15 miles east of the Waterville - Belvidere town line and extending easterly 0.085 miles.
 Length of Project 450 feet = 0.085 miles



PROJECT: BELVIDERE
 NUMBER: BB 028-2-668
 CONTRACTOR: BLOW & COTE, MORRISVILLE
 RES. ENGR.: A. J. NEWTON
 RECORD PLANS BY: F. THORNE



CONTRACTOR: BLOW & COTE, MORRISVILLE, VT.
 YEAR: 1968
 LOCATION: Beginning at a point on Vt. Rte. 109 0.15 miles east of the Waterville - Belvidere town line and extending easterly 0.085 miles

3+00	712.0
4+00	710.0
4+50	708.2
5+00	706.8
5+50	705.0
6+00	703.4
6+50	701.6
7+00	700.9
7+50	700.1
8+00	700.4
8+50	700.8
9+00	701.4
9+50	702.6

BELVIDERE
 #B 028-2-6686

ANDERSON
 BLOW & COTE
 A. J. NEWTON
 F. THORNE

VERMONT STR. STEEL
 C. T. GRISWOLD
 FEB 15, 68
 MAR 16, 68
 AUG 1, 68
 AUG 2, 68

TOWN OF BELVIDERE
 Project BB 0282-6686
 Pin # 000056
 Route VT 109
 Date 9/1/1967

Recommended by M. Blanchard 9/1/67
 For Approval District Engineer Date
 Recommended by W. Egan 2-1-67
 For Approval Bridge Engineer Date
 Recommended by J. Lusk 9/1/67
 For Approval Construction Engineer Date
 Recommended by W. Egan 9/1/67
 For Approval Assistant Chief Engineer Date
 Approved by J. Lusk 9/1/67
 Chief Engineer Date

Town: BELVIDERE
 Proj. no. BB-0282-6686
 Scale: 1" = 50'
 Vt. Rte. 109 over North Branch of Lamoille River