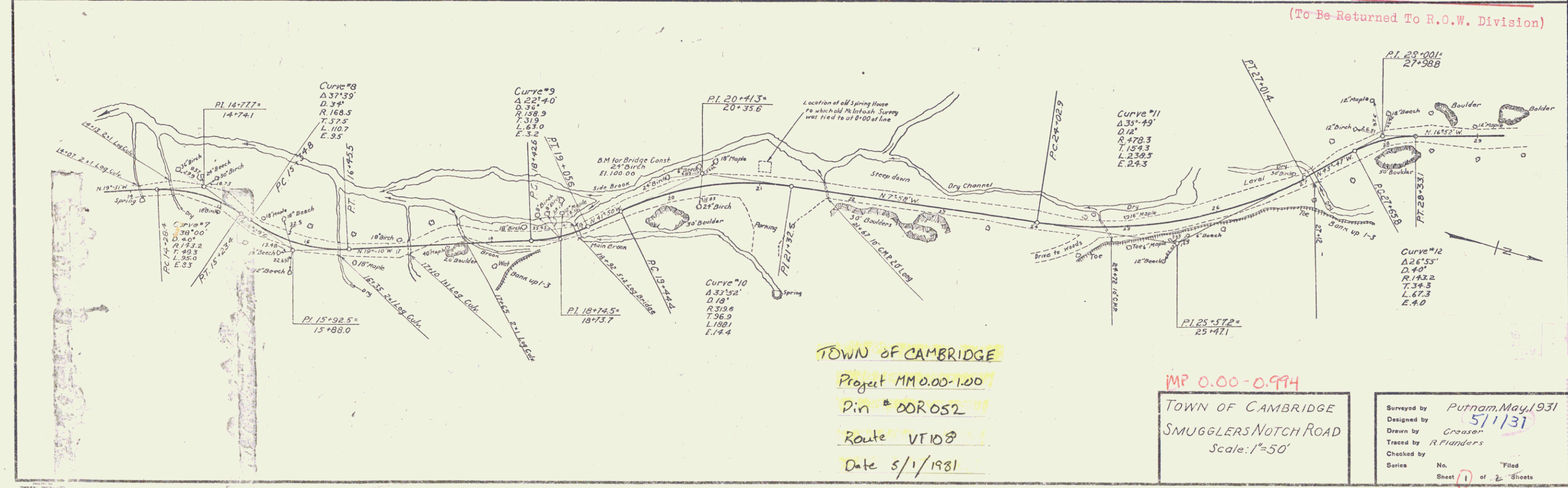


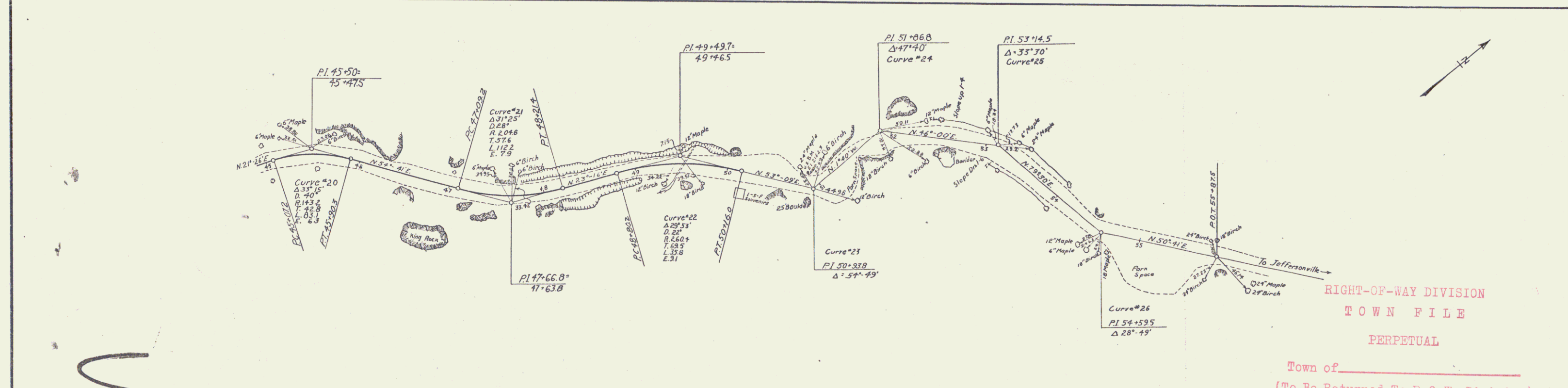
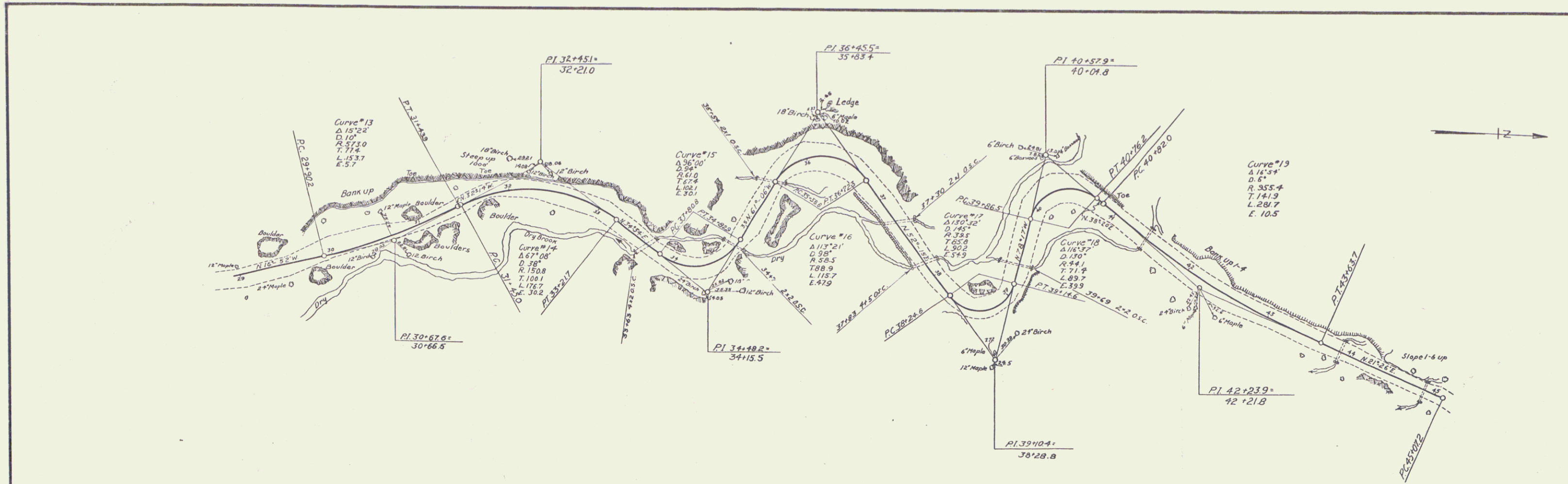
RIGHT-OF-WAY DIVISION
 TOWN FILE
 PERPETUAL
 Town of #108
 (To Be Returned To R.O.W. Division)



TOWN OF CAMBRIDGE
 Project MM 0.00-1.00
 Pin # 00R052
 Route VT 108
 Date 5/1/1981

MP 0.00-0.994
 TOWN OF CAMBRIDGE
 SMUGGLERS NOTCH ROAD
 Scale: 1"=50'

Surveyed by	Putnam, May, 1931
Designed by	5/1/1931
Drawn by	Groason
Traced by	R. Planders
Checked by	
Series	No. 1 of 2 Sheets



M

RIGHT-OF-WAY DIVISION
TOWN FILE
PERPETUAL

Town of _____
(To Be Returned To R.O.W. Division)

TOWN OF CAMBRIDGE
SMUGGLERS NOTCH ROAD
Scale: 1" = 50'

Surveyed by	Putnam, May, 1931
Designed by	
Drawn by	Cresser
Traced by	R. Flanders
Checked by	
Series	No. _____ Filed _____
	Sheet 2 of 2 Sheets