

TYPICAL CROSS SECTION OF IMPROVEMENT SINGLE TRACK CURB OF OUTSIDE ASPHALT WITH CRUSHED PEA STONE, ITEM 814  
 TYPICAL AND FINISHING TABLES  
 QUANTITY SHEET (ITEMS AND DRAINAGE)  
 NETWORK SHEETS  
 PLAN AND PROFILE SHEETS  
 DISTRIBUTION DETAILS (DRAINAGE AND MARKERS)  
 DISTRIBUTION DETAILS (DITCHES)  
 SIGNATURE SHEET (S-40) (BARRICADES, SIGNS AND LIGHTS)  
 SIGNATURE SHEET (S-45-45) (CABLE GUARD RAIL)  
 SIGNATURE SHEET (S-45-45) (CABLE GUARD RAIL)  
 THIS SHEET APPROVED BY THE CHIEF  
 ENGINEER STATE DEPARTMENT OF HIGHWAYS  
 JUNE 10, 1950

# DEPARTMENT OF HIGHWAYS

## PROPOSED IMPROVEMENT

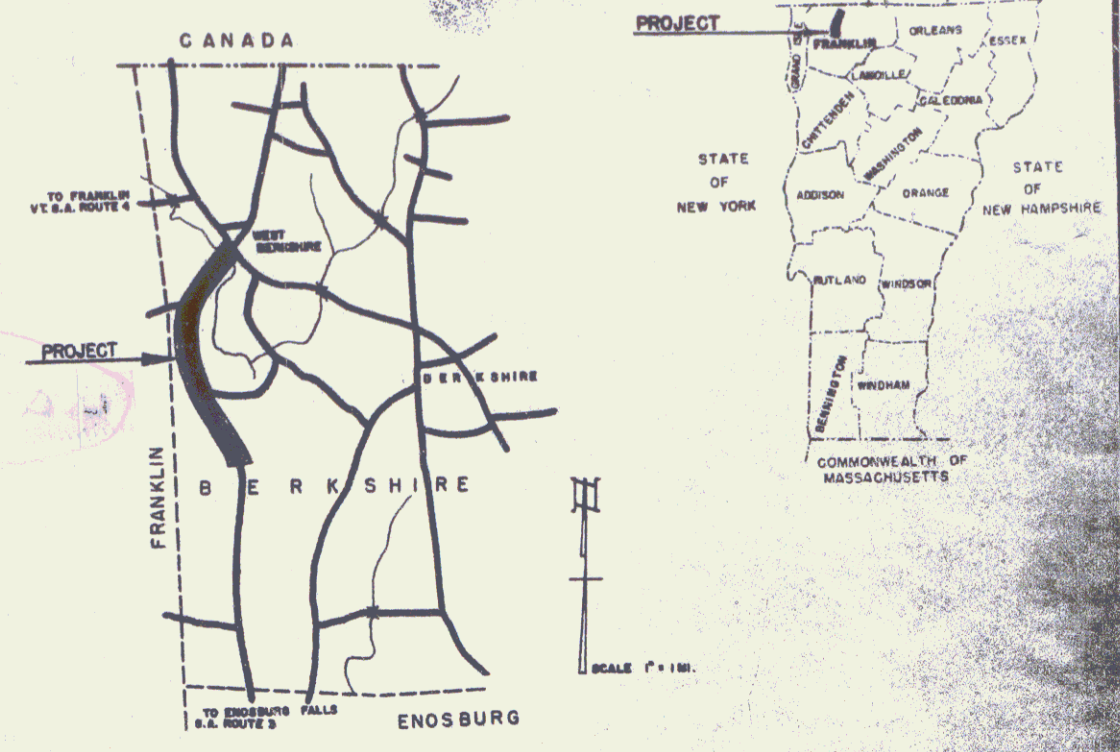
SECONDARY PROJECT

### TOWN OF BERKSHIRE

COUNTY OF FRANKLIN  
 VERMONT STATE AID ROUTE 3  
 ENOSBURG FALLS-WEST BERKSHIRE ROAD

BEGINNING AT A POINT 13,400.0 FEET SOUTHERLY OF THE INTERSECTION OF VERMONT STATE AID ROUTES 2 AND 3 IN THE TOWN OF BERKSHIRE AND EXTENDING NORTHERLY 13,311.0 FEET. (EXCLUDING BRIDGE)

LENGTH OF PROJECT 13,311.0 FEET = 2.521 MILES

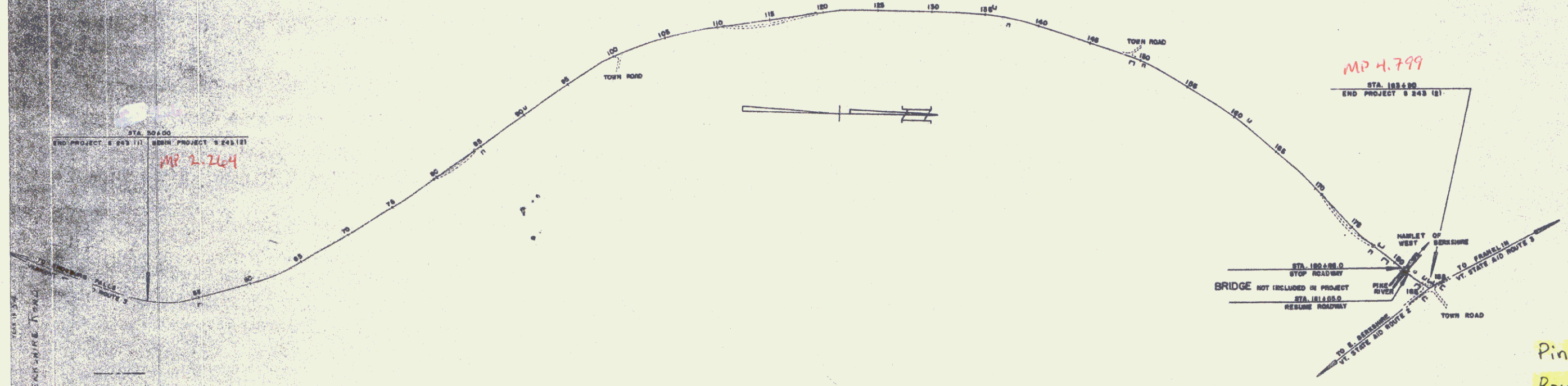


| NUMBER  | TYPE              | PAVEMENT AREA |
|---------|-------------------|---------------|
| 243 (2) | SINGLE TRACK COAT | 29380 S.Y.    |

RECORD PLANS

MATERIALS

|                                   |  |
|-----------------------------------|--|
| RCP                               | VT. CONC. PIPE CORP., WINDSOR          |
| ACCGMP                            | NEW ENG. MET. CULV. CO., BOSTON, MASS. |
| CABLE FOR G.R. AM. ST. & WIRE CO. | NEW HAVEN, CONN.                       |
| CONTRACT DATED                    | APRIL 9, 1954                          |
| CONTRACT STARTED                  | APRIL 19, 1954                         |
| CONTRACT COMPLETED                | OCTOBER 8, 1954                        |
| CONTRACT ACCEPTED                 | OCTOBER 8, 1954                        |



| GROUND ELEVATION | BATHY LINE |
|------------------|------------|
| GRADE ELEVATION  | BATHY LINE |

CURVE DATA

|                       |          |
|-----------------------|----------|
| DEFLECTION OF ANGLE   | A        |
| DEGREE OF CURVE       | D        |
| RADIUS OF CURVE       | R        |
| TANGENT DISTANCE      | T        |
| LENGTH OF CURVE       | L        |
| EXTERNAL DISTANCE     | E        |
| POINT OF INTERSECTION | P.I.     |
| POINT OF CURVE        | P.C.     |
| POINT OF TANGENT      | P.T.     |
| POINT ON TANGENT      | P.O.T.   |
| POINT ON SUB-TANGENT  | P.O.S.T. |

SCALES

|                    |           |
|--------------------|-----------|
| TITLE              | 1" = 500' |
| TYPICAL            | 1" = 5'   |
| PLAN               | 1" = 80'  |
| PROFILE HORIZONTAL | 1" = 50'  |
| PROFILE VERTICAL   | 1" = 10'  |
| CROSS-SECTIONS     | 1" = 5'   |

THESE PLANS ARE SUBJECT TO SUCH REVISIONS AS MAY BE REQUIRED BY THE BUREAU OF PUBLIC ROADS OR THE COMMISSIONER OF HIGHWAYS.

CONSTRUCTION IS TO BE CARRIED ON IN ACCORDANCE WITH THE PLANS AND THE STANDARD ROAD AND BRIDGE SPECIFICATIONS OF 1948, AS APPROVED JULY 25, 1949 BY THE BUREAU OF PUBLIC ROADS, INCLUDING ALL SUBSEQUENT APPROVED REVISIONS AND SUCH REVISED SPECIFICATIONS AND SPECIAL PROVISIONS AS ARE SUBMITTED WITH THE PLANS.

Pin # 000050  
 Route VT108

DEPARTMENT OF COMMERCE  
 BUREAU OF PUBLIC ROADS

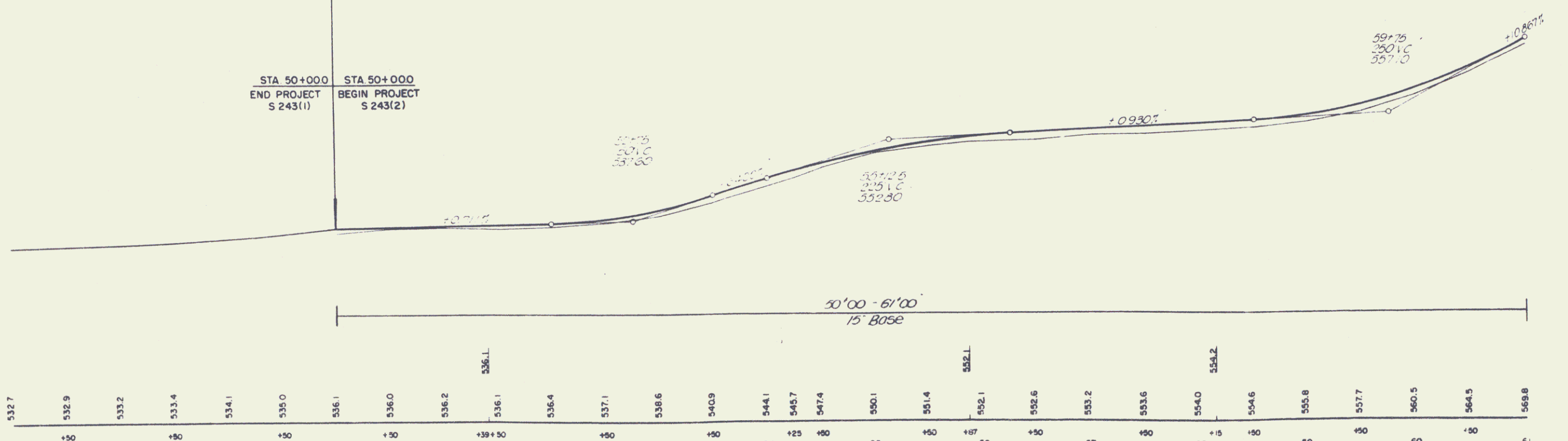
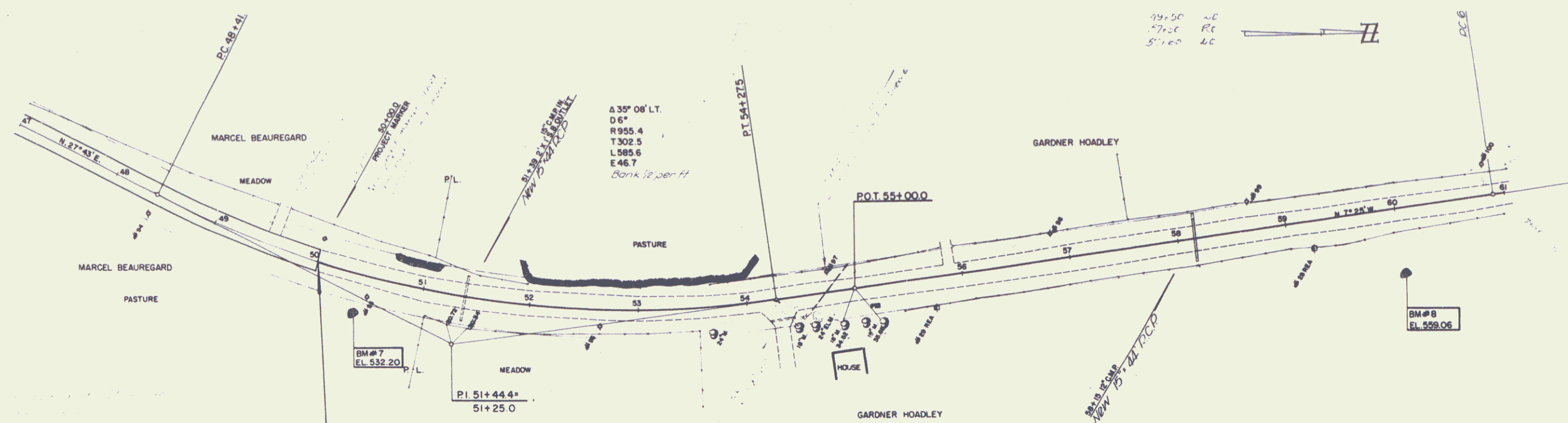
APPROVED \_\_\_\_\_ DATE \_\_\_\_\_

DISTRICT ENGINEER

PROJECT S NO. 243 (2)

SHEET 1 OF SHEETS 49

|                                     |                                     |                                     |                                     |                                     |
|-------------------------------------|-------------------------------------|-------------------------------------|-------------------------------------|-------------------------------------|
| APPROVED _____<br>DISTRICT ENGINEER | APPROVED _____<br>DISTRICT ENGINEER | APPROVED _____<br>DISTRICT ENGINEER | APPROVED _____<br>DISTRICT ENGINEER | APPROVED _____<br>DISTRICT ENGINEER |
| DATE 1-2-54                         | DATE 2-5-54                         | DATE 1-27-54                        | DATE 2-8-54                         | DATE 2-10-54                        |



532.7    532.9    533.2    533.4    534.1    535.0    536.1    536.0    536.2    536.1    536.4    537.1    538.6    540.9    544.1    545.7    547.4    550.1    551.4    552.1    552.6    553.2    553.6    554.0    554.6    555.8    557.7    560.5    564.5    568.8

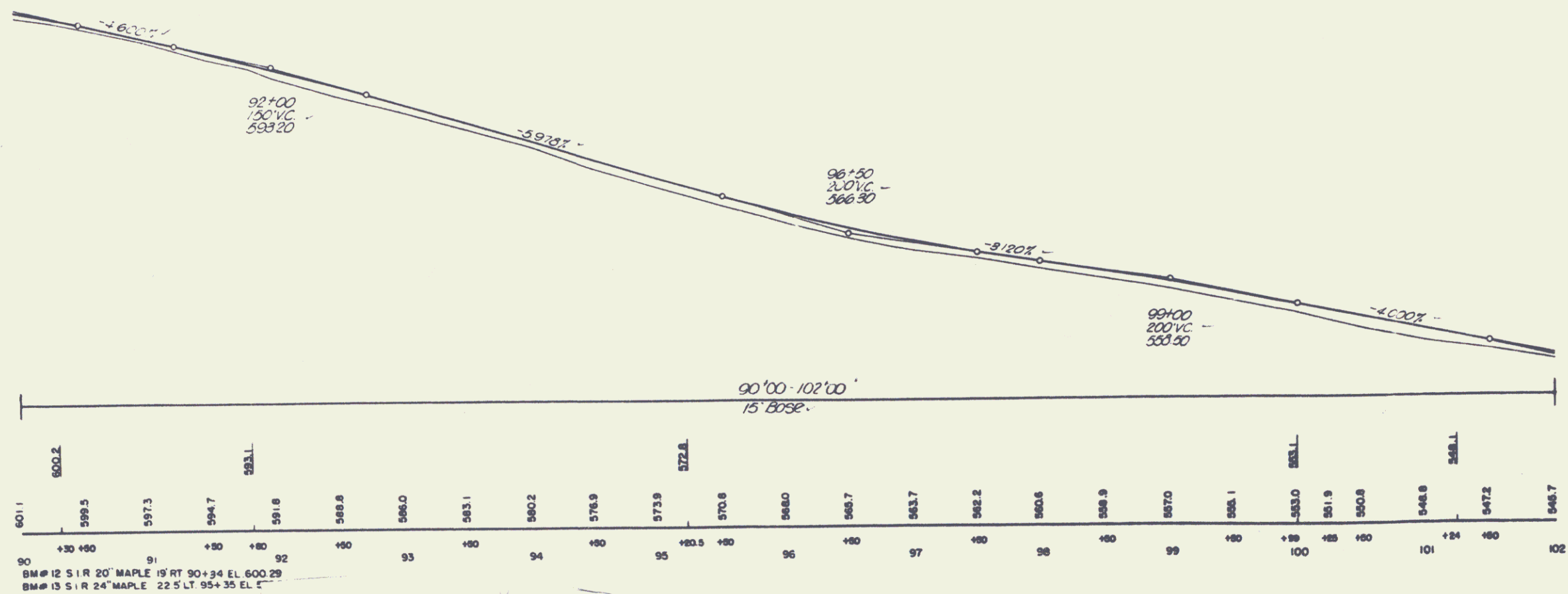
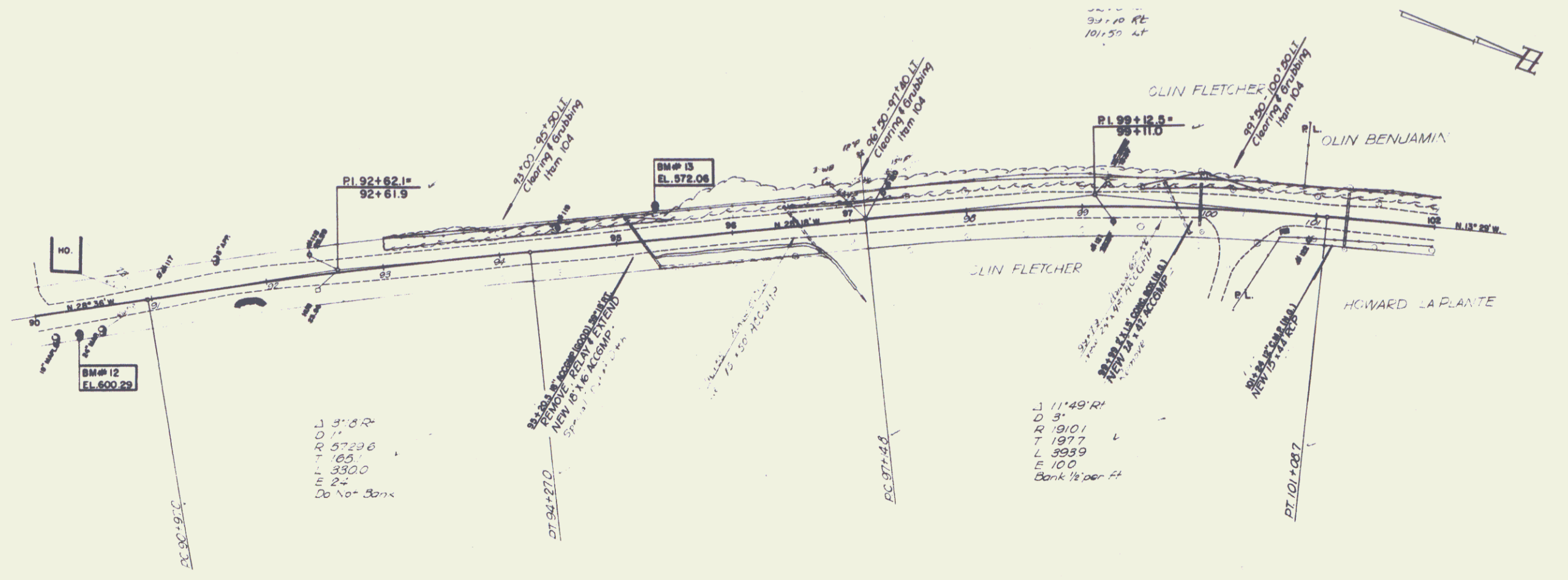
47    48    49    50    51    52    53    54    55    56    57    58    59    60    61

BM#7 SPOT ON BOULDER 31' RT 50+46 EL 532.20  
 BM#8 SPOT ON BOULDER 56' RT 60+04 EL 559.06

2



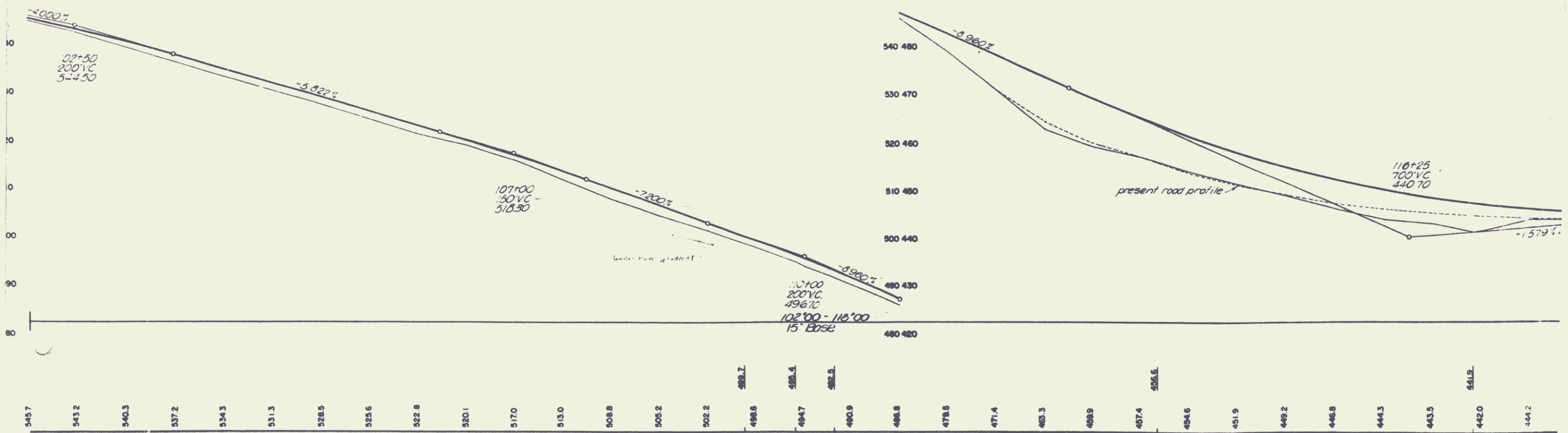
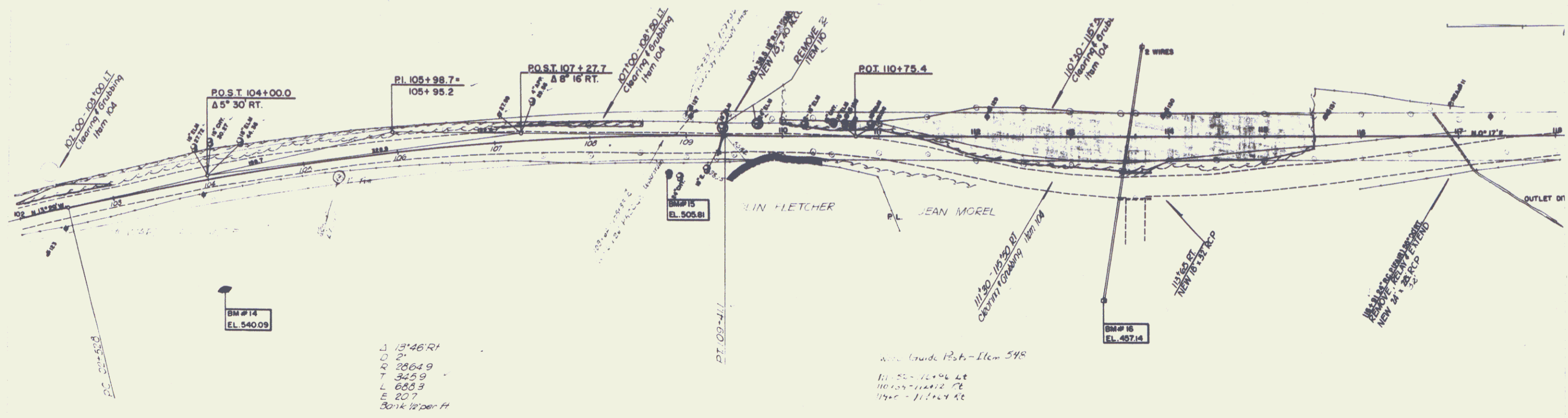




|       |       |       |       |       |       |       |       |       |       |       |       |       |
|-------|-------|-------|-------|-------|-------|-------|-------|-------|-------|-------|-------|-------|
| 90    | 91    | 92    | 93    | 94    | 95    | 96    | 97    | 98    | 99    | 100   | 101   | 102   |
| 601.1 | 598.5 | 597.3 | 594.7 | 591.8 | 588.8 | 586.0 | 583.1 | 580.2 | 578.9 | 573.9 | 570.6 | 568.0 |
| 600.2 |       |       | 593.1 |       |       |       | 572.1 |       |       |       |       | 563.7 |
|       |       |       |       |       |       |       |       |       |       |       |       | 562.2 |
|       |       |       |       |       |       |       |       |       |       |       |       | 560.6 |
|       |       |       |       |       |       |       |       |       |       |       |       | 558.9 |
|       |       |       |       |       |       |       |       |       |       |       |       | 567.0 |
|       |       |       |       |       |       |       |       |       |       |       |       | 565.1 |
|       |       |       |       |       |       |       |       |       |       |       |       | 563.0 |
|       |       |       |       |       |       |       |       |       |       |       |       | 561.9 |
|       |       |       |       |       |       |       |       |       |       |       |       | 560.8 |
|       |       |       |       |       |       |       |       |       |       |       |       | 548.8 |
|       |       |       |       |       |       |       |       |       |       |       |       | 547.2 |
|       |       |       |       |       |       |       |       |       |       |       |       | 545.7 |

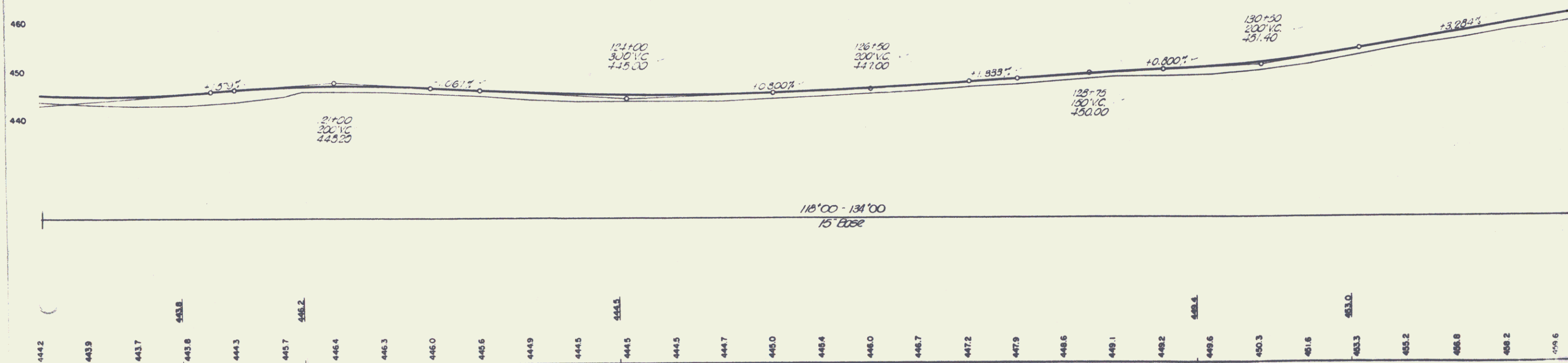
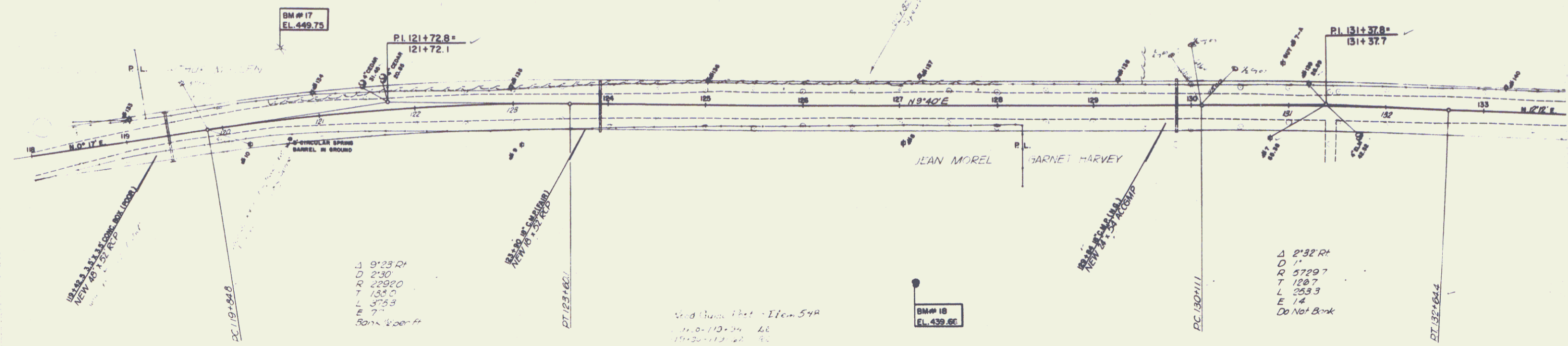
BERKSHIRE  
PROJECT S NO. 243121  
SHEET 11 OF 49

5



102 BM # 14 SPOT ON LEDGE 115' RT. 103+94 EL. 540.09  
 BM # 15 5.1 POWER POLE # 38/12A 170' RT. 113+33 EL. 487.14  
 BM # 15 1 R 24" BLACK CHERRY 37.5' RT. 108+79 EL. 505.81

BERKSHIRE PROJECT 5 NO. 2 SHEET 72 OF 80

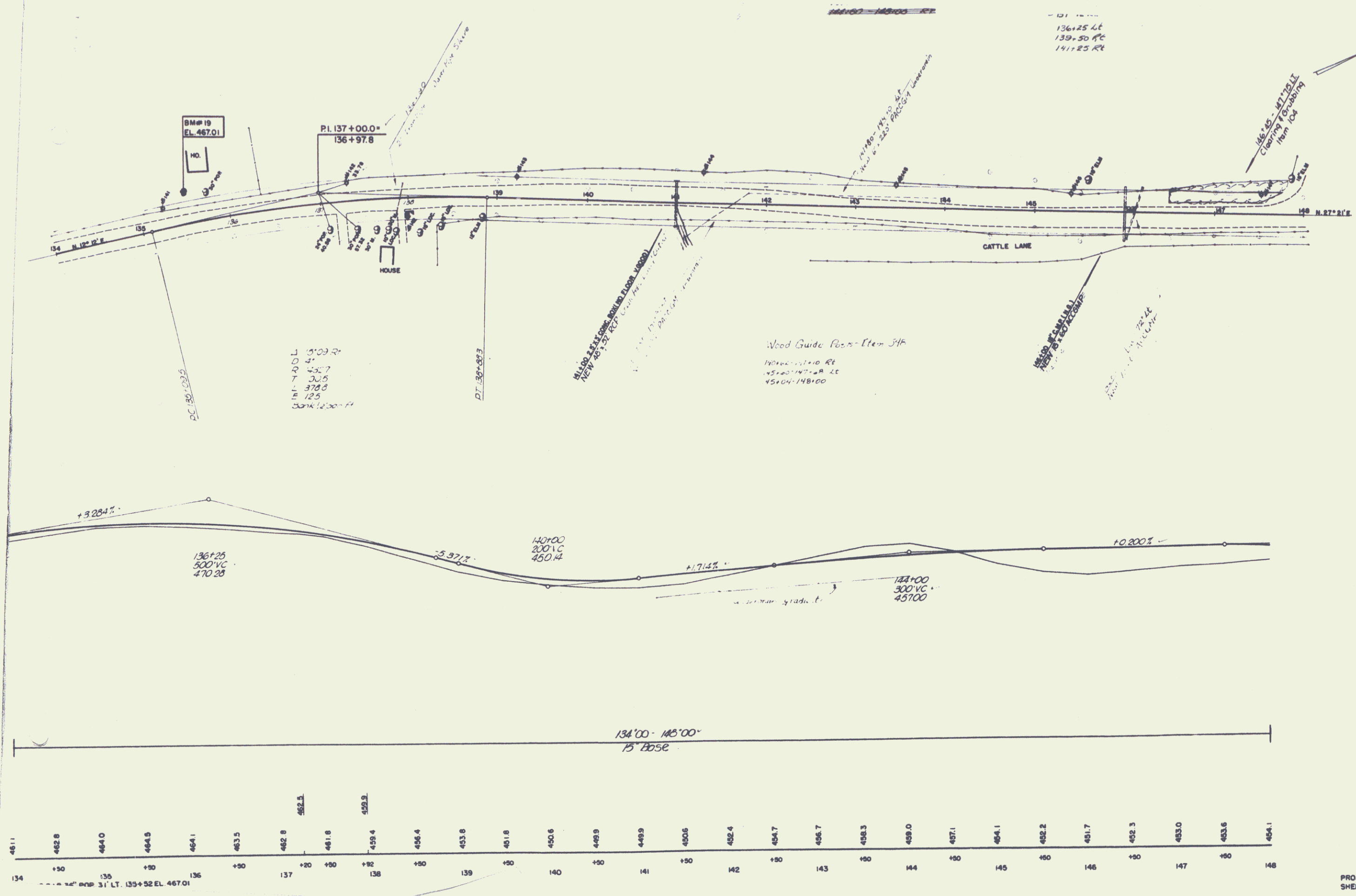


444.2    443.9    443.7    443.6    444.3    445.7    446.4    446.3    446.0    445.6    444.9    444.5    444.5    444.5    444.7    445.0    445.4    446.0    446.7    447.2    447.9    448.6    449.1    449.2    449.6    450.3    451.6    453.0    455.2    456.8    458.2    459.6

118    119    120    121    122    123    124    125    126    127    128    129    130    131    132    133

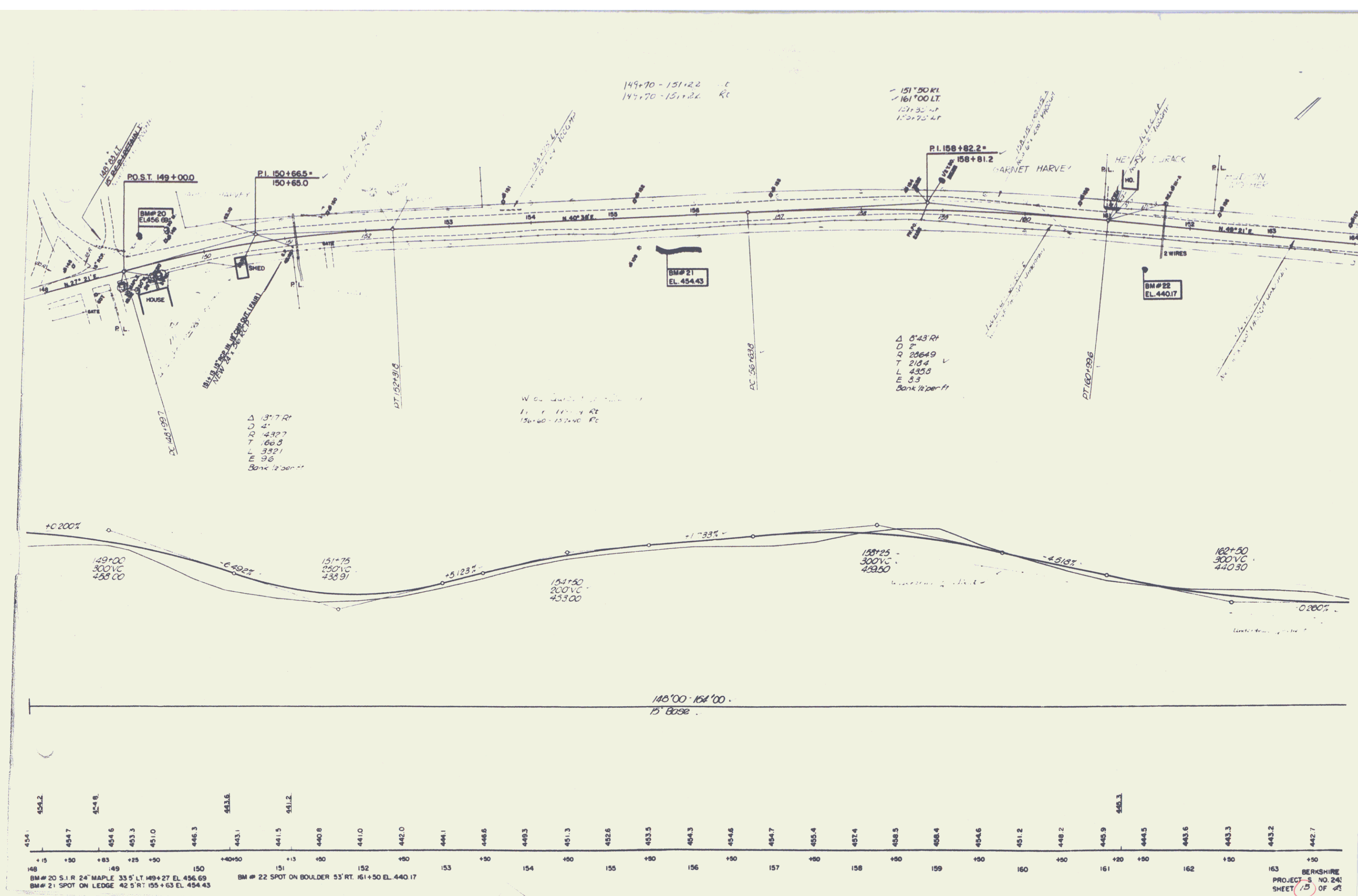
BM # 17 S 12° TAM 74' LT 120+70 EL. 449.75  
 BM # 18 S 1 R 24° ELM 180° RT 127+17 EL. 439.66

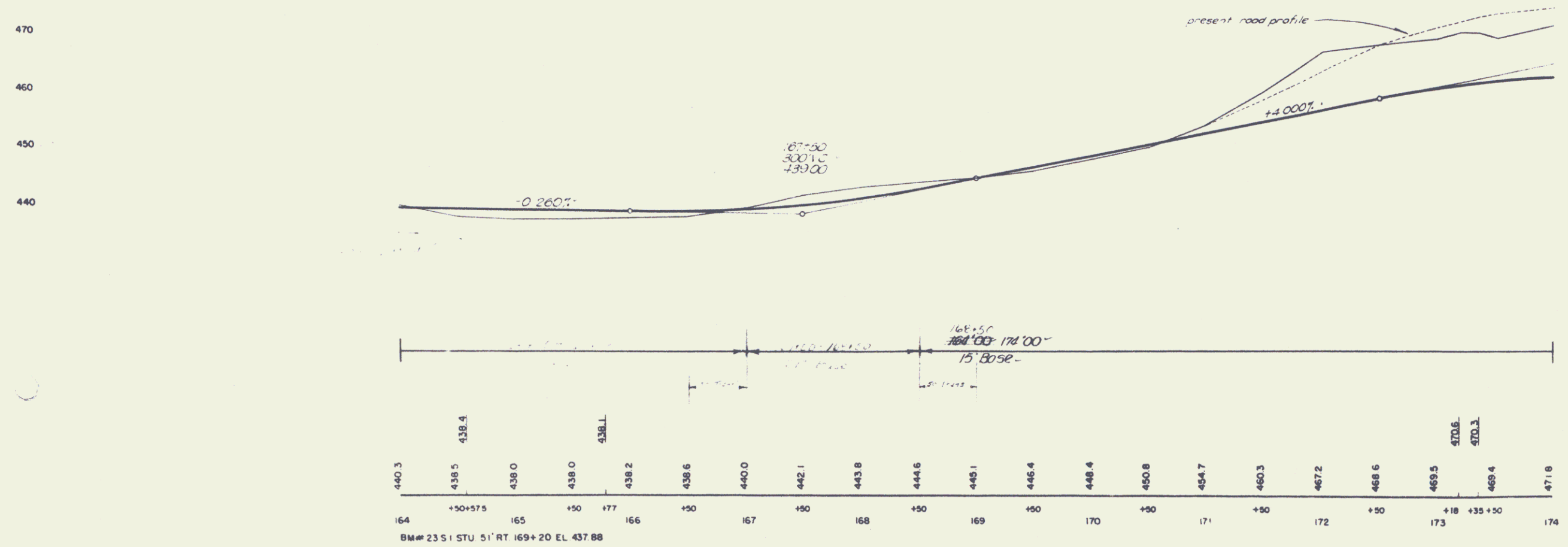
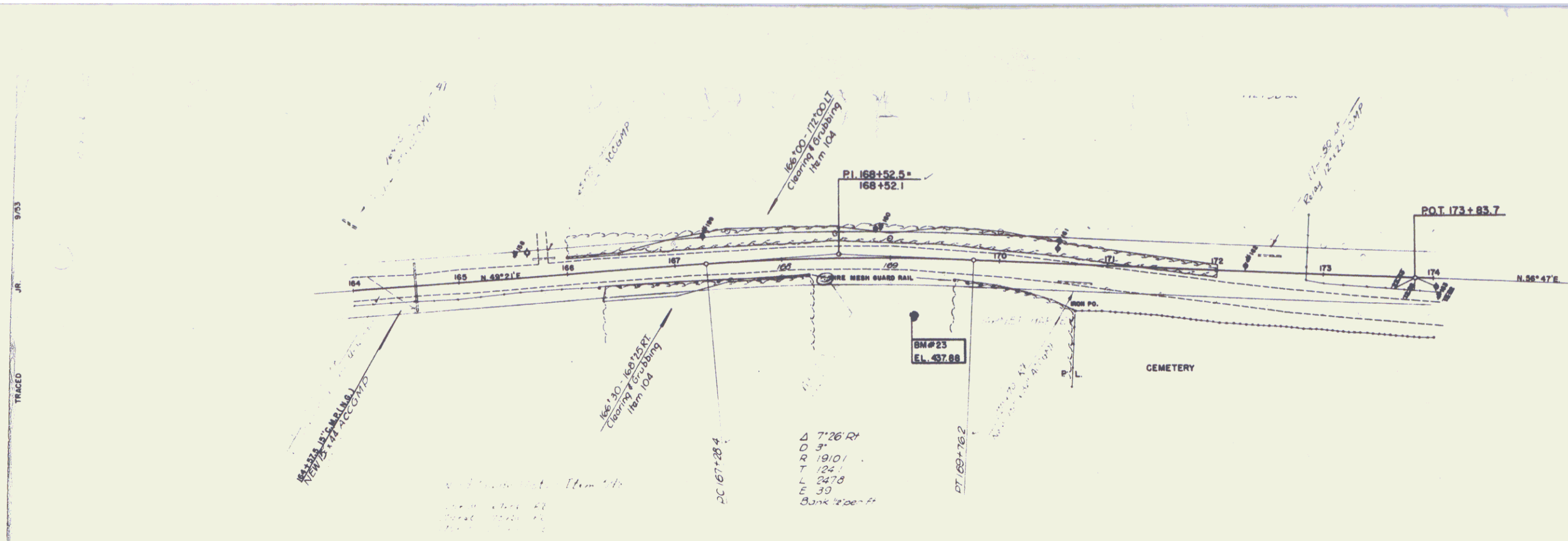
BERKSHIRE PROJECT - S NC SHEET 3 OF 7



BERKSHIRE  
 PROJECT NO. 243(2)  
 SHEET 12 OF 19

8





**TWO CABLE GUARD RAIL**

174+00 TO 181+00  
 180+00 TO 180+40  
 180+30 TO 180+81.6  
 181+00 TO 181+83.4  
 181+83.4 TO 181+83.4  
 181+83.4 TO 181+83.4

Δ 10° 25' LT  
 D 2'  
 R 1432.7  
 T 330.6  
 L 250.4  
 E 59  
 Bank 12' per ft

**CONSTRUCT DRIVES**

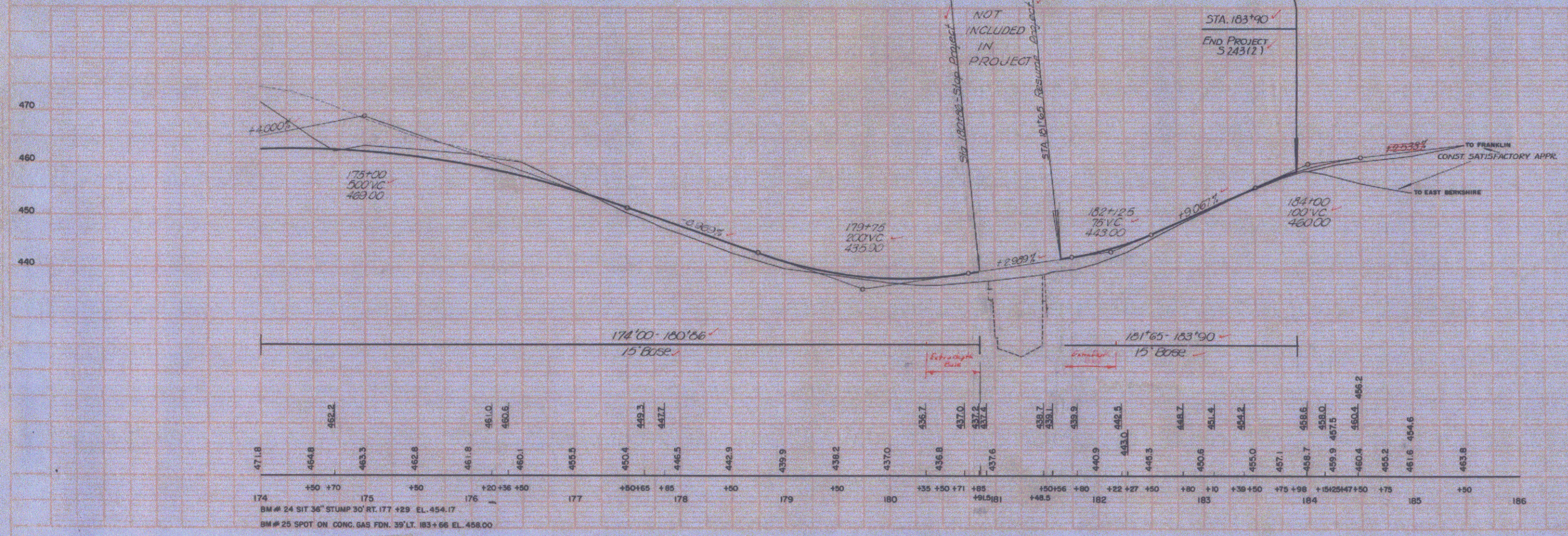
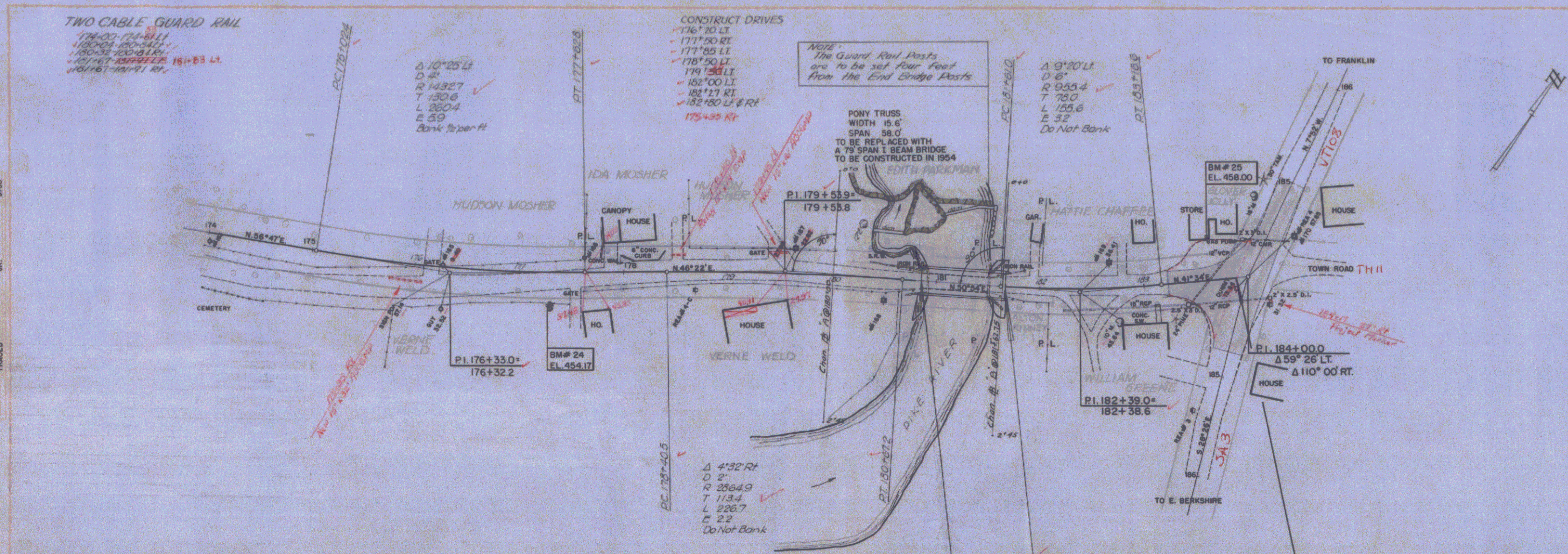
- 176+20 LT
- 177+50 RT
- 177+85 LT
- 178+50 LT
- 179+55 LT
- 181+00 LT
- 182+27 RT
- 182+80 LT & RT
- 175+95 RT

NOTE - The Guard Rail Posts are to be set four feet from the End Sledge Posts

PONY TRUSS  
 WIDTH 15.4'  
 SPAN 56.0'  
 TO BE REPLACED WITH  
 A 75' SPAN I BEAM BRIDGE  
 TO BE CONSTRUCTED IN 1954

Δ 9° 20' LT  
 D 6'  
 R 2055.4  
 T 78.0  
 L 155.6  
 E 32  
 Do Not Bank

7/53  
 9/53  
 LAMIN  
 JR.  
 TRACED



|       |       |       |       |       |       |       |       |       |       |       |       |       |       |       |       |       |       |
|-------|-------|-------|-------|-------|-------|-------|-------|-------|-------|-------|-------|-------|-------|-------|-------|-------|-------|
| 174   | 175   | 176   | 177   | 178   | 179   | 180   | 181   | 182   | 183   | 184   | 185   | 186   |       |       |       |       |       |
| 471.8 | 464.8 | 463.3 | 462.8 | 461.8 | 460.1 | 458.5 | 456.4 | 453.7 | 451.4 | 450.0 | 450.2 | 463.6 |       |       |       |       |       |
| 452.2 |       | 461.0 | 460.6 |       | 459.3 | 457.7 | 457.0 | 457.2 | 457.6 | 458.7 | 458.0 | 459.9 | 467.5 | 460.4 | 460.2 | 461.6 | 454.6 |