

FED. ROAD DIST. NO.	STATE	PROJ. NO.	YEAR	SHEET NO.	TOTAL SHEETS
9	VT.	150	1933	1	28

INDEX OF SHEETS

SHEET NO. 1 TITLE PAGE
 " 2 TYPICAL CROSS-SECTION OF IMPROVEMENT } Grading base & culvert const.
 " 3 Banking and widening tables
 4-9 Plan and Profile
 10 Pipe Culverts 3-29
 11 Guard Rail 5-30
 12 Bannockburn Signs, etc. 5B-11
 13-25 Cross Sections

Standard Sheet 5-28 submitted to the Chief Engineer on May 16 1933.
 Standard Sheet 5-30 submitted to the Chief Engineer on Aug 15 1933.

STATE OF VERMONT
 STATE HIGHWAY DEPARTMENT

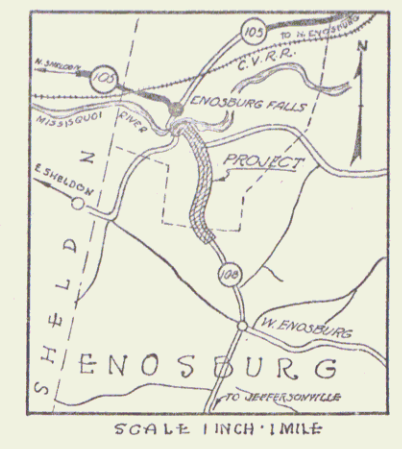
PLAN AND PROFILE OF PROPOSED
 STATE HIGHWAY

NATIONAL RECOVERY SECONDARY PROJECT

TOWN OF ENOSBURG

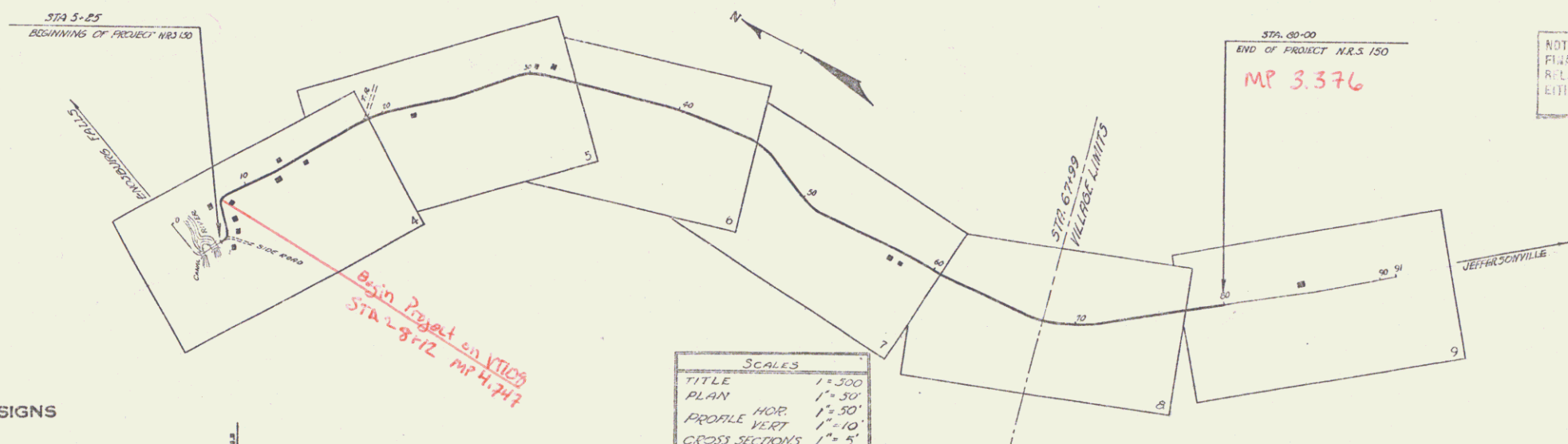
ENOSBURG FALLS-JEFFERSONVILLE ROAD
 FROM A POINT 12 FEET SOUTH FROM CONG. BRIDGE OVER THE MISSISSQUOI RIVER SOUTHERLY 1.413 MI. TO A POINT 500 FEET NORTH FROM THE RESIDENCE OF HARLEY OVITT

LENGTH OF PROJECT = 7,462.4 FT. = 1.413 MILES



(To Be Returned to R.O.W. Division)
 Form of VT 108
 PERPETUAL
 TOWN FILE
 RIGHT-OF-WAY DIVISION

RECORD PLANS



NOTE: ANY FURTHER INFORMATION CONCERNING FINAL QUANTITIES, AMOUNTS OR OTHER DETAILS RELATIVE TO THIS PROJECT MAY BE FOUND IN EITHER THE FIELD BOOKS OR THE ESTIMATE FILE.

CONVENTIONAL SIGNS

COUNTY LINE	GROUND ELEVATION	SCALE
TOWN LINE	GRADE ELEVATION	LINE
FENCE LINE		
STONE WALL		
UNFENCED PROPERTY		
GUARD RAIL		
TRAVELED WAY		
RAILROAD		
RETAINING WALL		
CENTER LINE		
SURVEY LINE		
CULVERT		
DROP INLET		
TROLLEY POLE		
POWER POLE		
TELEPHONE POLE		
TREES		
ROCKS		

SCALES

TITLE	1" = 300'
PLAN	1" = 30'
PROFILE VERT.	1" = 10'
CROSS SECTIONS	1" = 5'

NOTE: These plans are subject to such revisions as may be required by the Bureau of Public Roads or the Commissioner of Highways. Construction is to be carried on in accordance with the standard road and bridge specifications of 1930 with all subsequent approved revisions and such specifications and special provisions as are submitted with the plans.

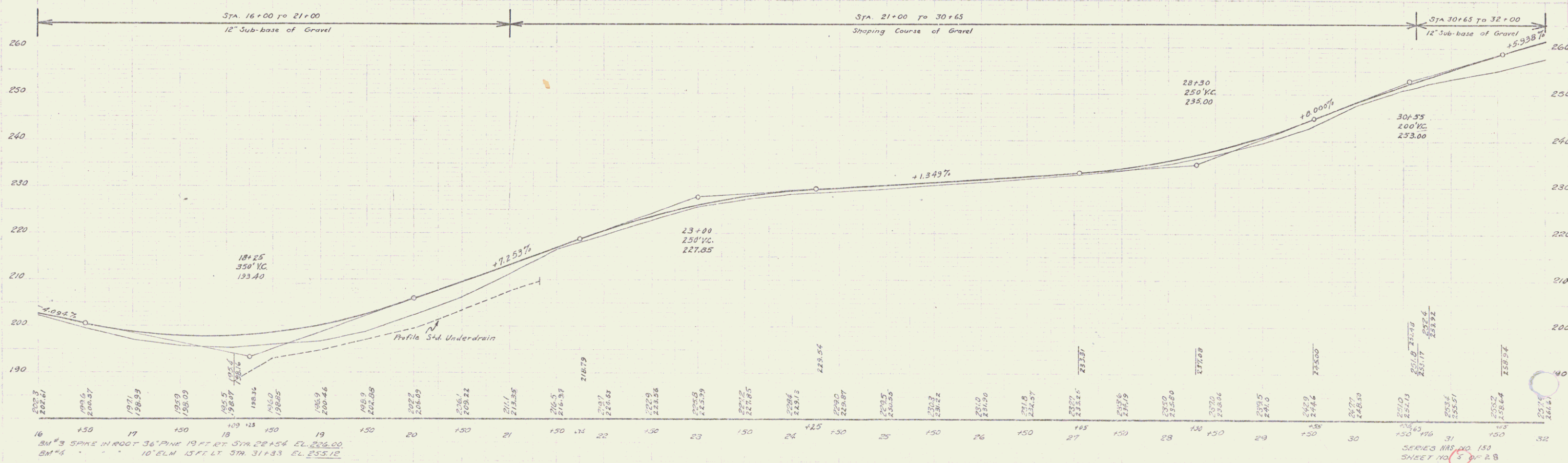
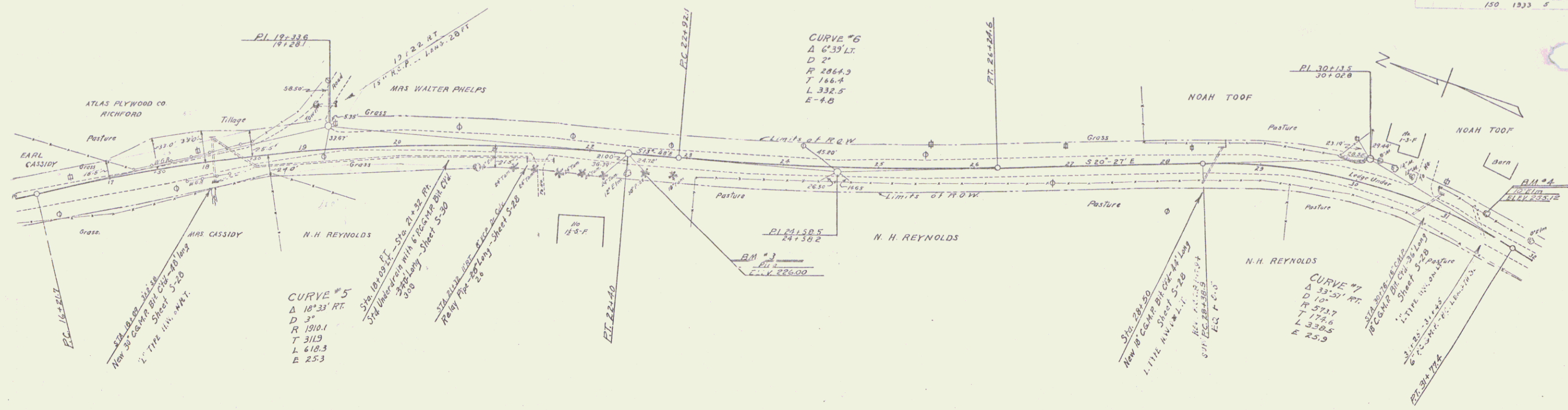
Nov 3 1933
 APPROVED: *H.E. Saugat*
 COMMISSIONER OF HIGHWAYS

Pin # 008049
 Route VT 108
 Date 11/3/1933

RECOMMENDED: _____
 DISTRICT ENGINEER BUREAU OF PUBLIC ROADS
 RECOMMENDED FOR APPROVAL: _____
 CHIEF ENGINEER BUREAU OF PUBLIC ROADS
 APPROVED: _____
 DIRECTOR BUREAU OF PUBLIC ROADS

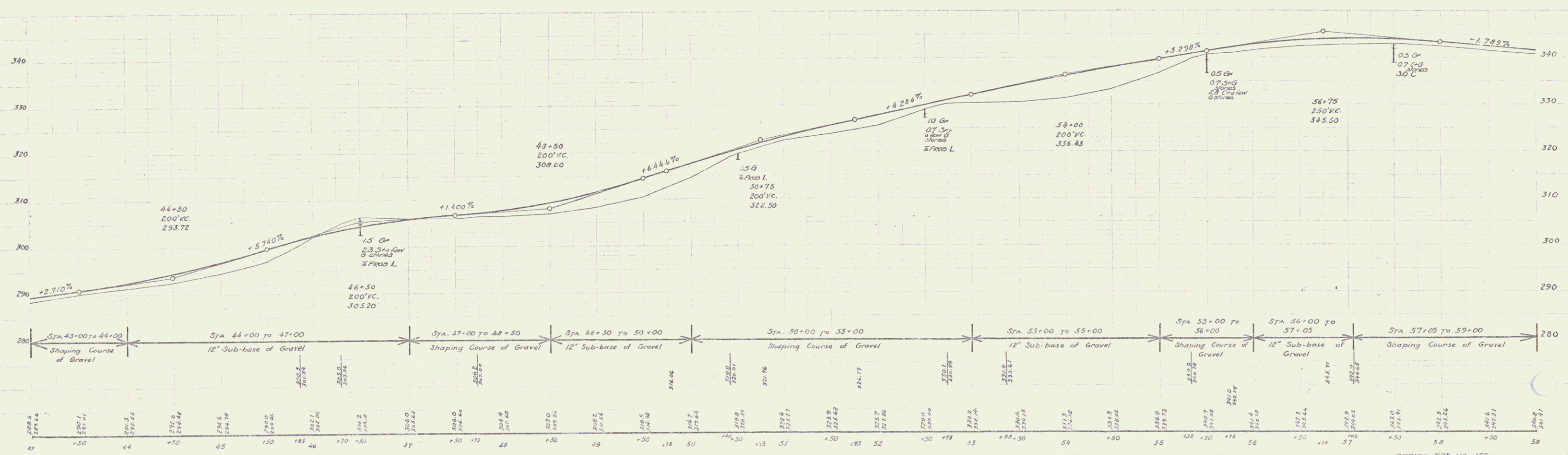
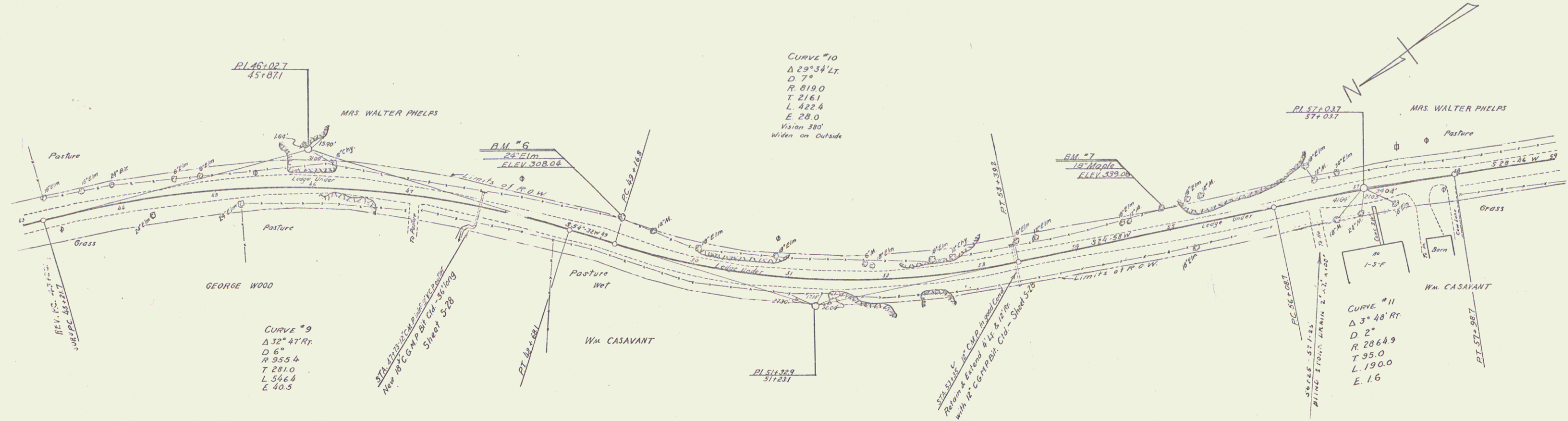
APPROVED: _____
 SERIES NO. NO. 100 FILED
 SHEET 1 OF 28

DIST. #8 PLANS



16 3" SPIKE IN ROOT 36" PINE 19 FT RT STA 28+54 EL 206.00
 BM #4 10' ELM 15 FT LT 37M 31+33 EL 253.12

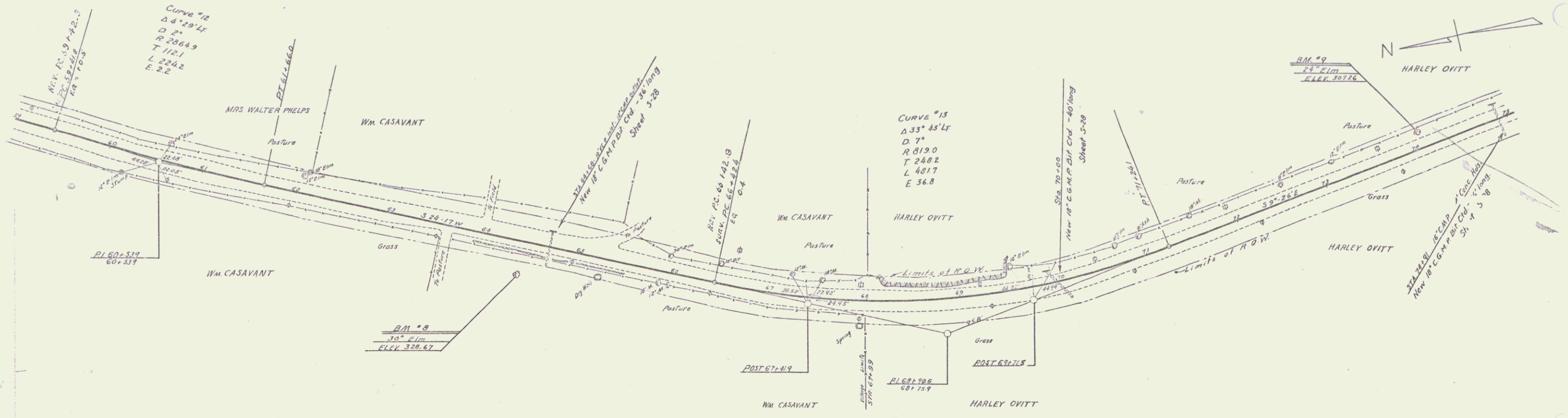
SERIES NRS 100 150
 SHEET NO. 5 28



BM #6 SPIKE IN ROOT 24' ELN 28 FT LT STA 49+16 EL 308.65
 BM #7 18 MAPLE 24 FT LT STA 56+95 EL 339.08

SERIES N.A.S. NO. 150
 SHEET NO. 7 OF 23

5

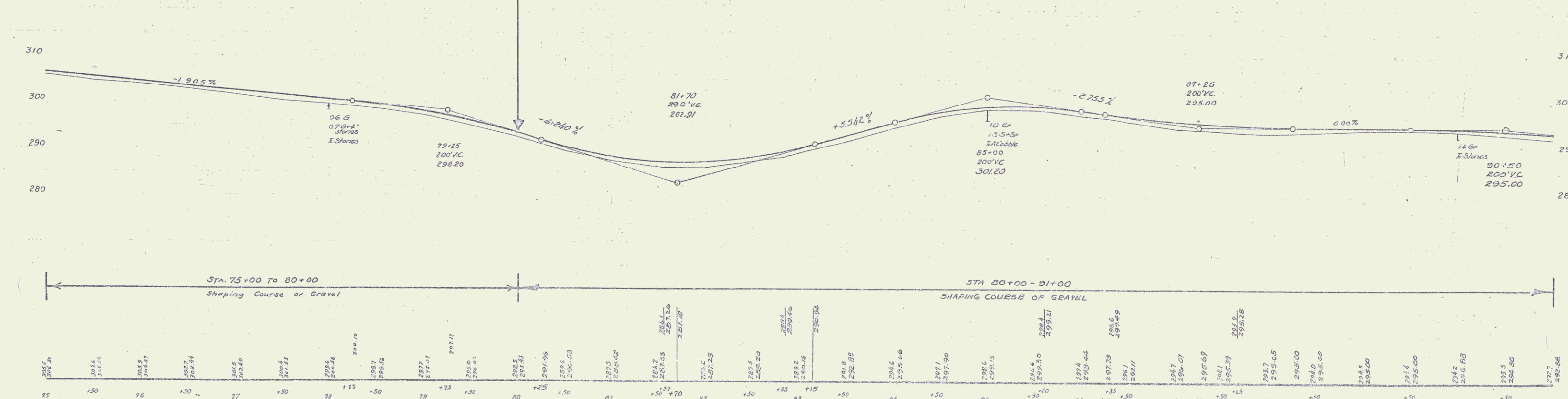
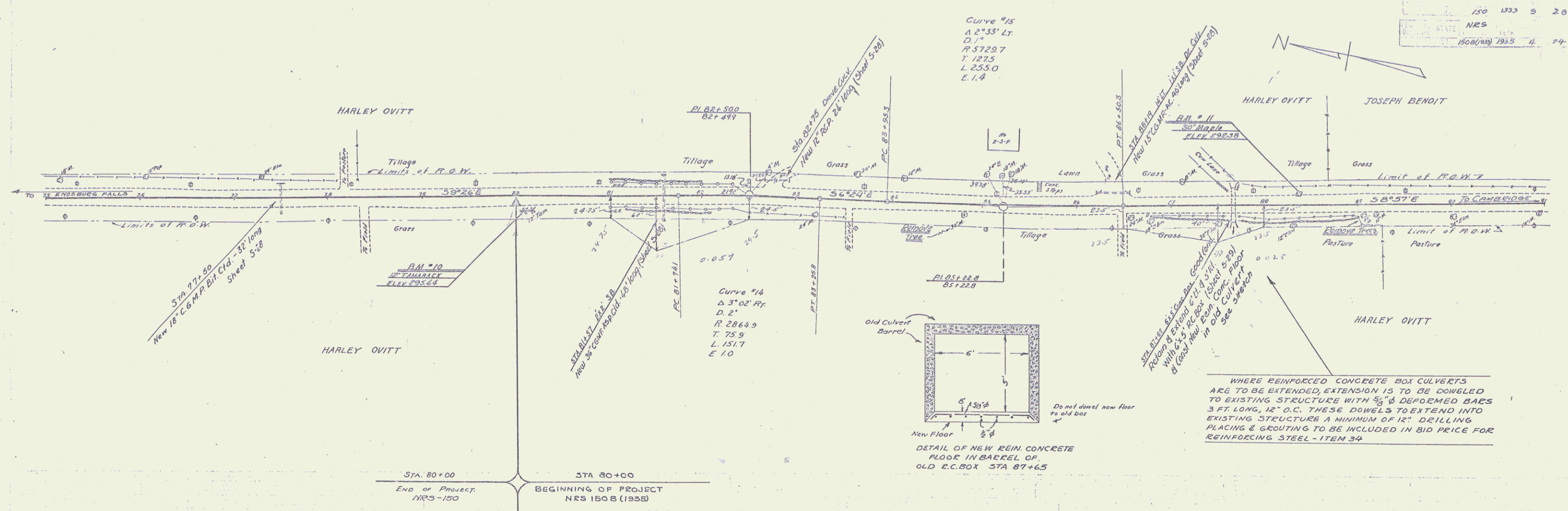


Sta.	59	60	61	62	63	64	65	66	67	68	69	70	71	72	73	74	75
Elev.	340.97	340.58	340.21	339.84	339.47	339.10	338.73	338.36	337.99	337.62	337.25	336.88	336.51	336.14	335.77	335.40	335.03

2.74° in $100'$ in $100'$ 35° by Sta. 64+39 Elev. 328.67
 2.74° in $100'$ in $100'$ 17° by Sta. 74+01 = 307.26

SHEET NO. 8 OF 2 B

NRS
150 1333 9 20
NRS
1508(1935) 7935 4 74



SHAPE COURSE OF GRAVEL
 STA 75+00 TO 80+00
 STA 80+00 TO 91+00
 STA 80+00 TO 91+00
 STA 80+00 TO 91+00

31
30
29
28
280
290
300
310

85 86 87 88 89 90 91
 295.6
296.4
297.2
298.0
298.8
299.6
300.4
301.2
302.0
302.8
303.6
304.4
305.2
306.0
306.8
307.6
308.4
309.2
310.0
310.8
311.6
312.4
313.2
314.0
314.8
315.6
316.4
317.2
318.0
318.8
319.6
320.4
321.2
322.0
322.8
323.6
324.4
325.2
326.0
326.8
327.6
328.4
329.2
330.0
330.8
331.6
332.4
333.2
334.0
334.8
335.6
336.4
337.2
338.0
338.8
339.6
340.4
341.2
342.0
342.8
343.6
344.4
345.2
346.0
346.8
347.6
348.4
349.2
350.0
350.8
351.6
352.4
353.2
354.0
354.8
355.6
356.4
357.2
358.0
358.8
359.6
360.4
361.2
362.0
362.8
363.6
364.4
365.2
366.0
366.8
367.6
368.4
369.2
370.0
370.8
371.6
372.4
373.2
374.0
374.8
375.6
376.4
377.2
378.0
378.8
379.6
380.4
381.2
382.0
382.8
383.6
384.4
385.2
386.0
386.8
387.6
388.4
389.2
390.0
390.8
391.6
392.4
393.2
394.0
394.8
395.6
396.4
397.2
398.0
398.8
399.6
400.4
401.2
402.0
402.8
403.6
404.4
405.2
406.0
406.8
407.6
408.4
409.2
410.0
410.8
411.6
412.4
413.2
414.0
414.8
415.6
416.4
417.2
418.0
418.8
419.6
420.4
421.2
422.0
422.8
423.6
424.4
425.2
426.0
426.8
427.6
428.4
429.2
430.0
430.8
431.6
432.4
433.2
434.0
434.8
435.6
436.4
437.2
438.0
438.8
439.6
440.4
441.2
442.0
442.8
443.6
444.4
445.2
446.0
446.8
447.6
448.4
449.2
450.0
450.8
451.6
452.4
453.2
454.0
454.8
455.6
456.4
457.2
458.0
458.8
459.6
460.4
461.2
462.0
462.8
463.6
464.4
465.2
466.0
466.8
467.6
468.4
469.2
470.0
470.8
471.6
472.4
473.2
474.0
474.8
475.6
476.4
477.2
478.0
478.8
479.6
480.4
481.2
482.0
482.8
483.6
484.4
485.2
486.0
486.8
487.6
488.4
489.2
490.0
490.8
491.6
492.4
493.2
494.0
494.8
495.6
496.4
497.2
498.0
498.8
499.6
500.4
501.2
502.0
502.8
503.6
504.4
505.2
506.0
506.8
507.6
508.4
509.2
510.0
510.8
511.6
512.4
513.2
514.0
514.8
515.6
516.4
517.2
518.0
518.8
519.6
520.4
521.2
522.0
522.8
523.6
524.4
525.2
526.0
526.8
527.6
528.4
529.2
530.0
530.8
531.6
532.4
533.2
534.0
534.8
535.6
536.4
537.2
538.0
538.8
539.6
540.4
541.2
542.0
542.8
543.6
544.4
545.2
546.0
546.8
547.6
548.4
549.2
550.0
550.8
551.6
552.4
553.2
554.0
554.8
555.6
556.4
557.2
558.0
558.8
559.6
560.4
561.2
562.0
562.8
563.6
564.4
565.2
566.0
566.8
567.6
568.4
569.2
570.0
570.8
571.6
572.4
573.2
574.0
574.8
575.6
576.4
577.2
578.0
578.8
579.6
580.4
581.2
582.0
582.8
583.6
584.4
585.2
586.0
586.8
587.6
588.4
589.2
590.0
590.8
591.6
592.4
593.2
594.0
594.8
595.6
596.4
597.2
598.0
598.8
599.6
600.4
601.2
602.0
602.8
603.6
604.4
605.2
606.0
606.8
607.6
608.4
609.2
610.0
610.8
611.6
612.4
613.2
614.0
614.8
615.6
616.4
617.2
618.0
618.8
619.6
620.4
621.2
622.0
622.8
623.6
624.4
625.2
626.0
626.8
627.6
628.4
629.2
630.0
630.8
631.6
632.4
633.2
634.0
634.8
635.6
636.4
637.2
638.0
638.8
639.6
640.4
641.2
642.0
642.8
643.6
644.4
645.2
646.0
646.8
647.6
648.4
649.2
650.0
650.8
651.6
652.4
653.2
654.0
654.8
655.6
656.4
657.2
658.0
658.8
659.6
660.4
661.2
662.0
662.8
663.6
664.4
665.2
666.0
666.8
667.6
668.4
669.2
670.0
670.8
671.6
672.4
673.2
674.0
674.8
675.6
676.4
677.2
678.0
678.8
679.6
680.4
681.2
682.0
682.8
683.6
684.4
685.2
686.0
686.8
687.6
688.4
689.2
690.0
690.8
691.6
692.4
693.2
694.0
694.8
695.6
696.4
697.2
698.0
698.8
699.6
700.4
701.2
702.0
702.8
703.6
704.4
705.2
706.0
706.8
707.6
708.4
709.2
710.0
710.8
711.6
712.4
713.2
714.0
714.8
715.6
716.4
717.2
718.0
718.8
719.6
720.4
721.2
722.0
722.8
723.6
724.4
725.2
726.0
726.8
727.6
728.4
729.2
730.0
730.8
731.6
732.4
733.2
734.0
734.8
735.6
736.4
737.2
738.0
738.8
739.6
740.4
741.2
742.0
742.8
743.6
744.4
745.2
746.0
746.8
747.6
748.4
749.2
750.0
750.8
751.6
752.4
753.2
754.0
754.8
755.6
756.4
757.2
758.0
758.8
759.6
760.4
761.2
762.0
762.8
763.6
764.4
765.2
766.0
766.8
767.6
768.4
769.2
770.0
770.8
771.6
772.4
773.2
774.0
774.8
775.6
776.4
777.2
778.0
778.8
779.6
780.4
781.2
782.0
782.8
783.6
784.4
785.2
786.0
786.8
787.6
788.4
789.2
790.0
790.8
791.6
792.4
793.2
794.0
794.8
795.6
796.4
797.2
798.0
798.8
799.6
800.4
801.2
802.0
802.8
803.6
804.4
805.2
806.0
806.8
807.6
808.4
809.2
810.0
810.8
811.6
812.4
813.2
814.0
814.8
815.6
816.4
817.2
818.0
818.8
819.6
820.4
821.2
822.0
822.8
823.6
824.4
825.2
826.0
826.8
827.6
828.4
829.2
830.0
830.8
831.6
832.4
833.2
834.0
834.8
835.6
836.4
837.2
838.0
838.8
839.6
840.4
841.2
842.0
842.8
843.6
844.4
845.2
846.0
846.8
847.6
848.4
849.2
850.0
850.8
851.6
852.4
853.2
854.0
854.8
855.6
856.4
857.2
858.0
858.8
859.6
860.4
861.2
862.0
862.8
863.6
864.4
865.2
866.0
866.8
867.6
868.4
869.2
870.0
870.8
871.6
872.4
873.2
874.0
874.8
875.6
876.4
877.2
878.0
878.8
879.6
880.4
881.2
882.0
882.8
883.6
884.4
885.2
886.0
886.8
887.6
888.4
889.2
890.0
890.8
891.6
892.4
893.2
894.0
894.8
895.6
896.4
897.2
898.0
898.8
899.6
900.4
901.2
902.0
902.8
903.6
904.4
905.2
906.0
906.8
907.6
908.4
909.2
910.0
910.8
911.6
912.4
913.2
914.0
914.8
915.6
916.4
917.2
918.0
918.8
919.6
920.4
921.2
922.0
922.8
923.6
924.4
925.2
926.0
926.8
927.6
928.4
929.2
930.0
930.8
931.6
932.4
933.2
934.0
934.8
935.6
936.4
937.2
938.0
938.8
939.6
940.4
941.2
942.0
942.8
943.6
944.4
945.2
946.0
946.8
947.6
948.4
949.2
950.0
950.8
951.6
952.4
953.2
954.0
954.8
955.6
956.4
957.2
958.0
958.8
959.6
960.4
961.2
962.0
962.8
963.6
964.4
965.2
966.0
966.8
967.6
968.4
969.2
970.0
970.8
971.6
972.4
973.2
974.0
974.8
975.6
976.4
977.2
978.0
978.8
979.6
980.4
981.2
982.0
982.8
983.6
984.4
985.2
986.0
986.8
987.6
988.4
989.2
990.0
990.8
991.6
992.4
993.2
994.0
994.8
995.6
996.4
997.2
998.0
998.8
999.6
1000.4
1001.2
1002.0
1002.8
1003.6
1004.4
1005.2
1006.0
1006.8
1007.6
1008.4
1009.2
1010.0
1010.8
1011.6
1012.4
1013.2
1014.0
1014.8
1015.6
1016.4
1017.2
1018.0
1018.8
1019.6
1020.4
1021.2
1022.0
1022.8
1023.6
1024.4
1025.2
1026.0
1026.8
1027.6
1028.4
1029.2
1030.0
1030.8
1031.6
1032.4
1033.2
1034.0
1034.8
1035.6
1036.4
1037.2
1038.0
1038.8
1039.6
1040.4
1041.2
1042.0
1042.8
1043.6
1044.4
1045.2
1046.0
1046.8
1047.6
1048.4
1049.2
1050.0
1050.8
1051.6
1052.4
1053.2
1054.0
1054.8
1055.6
1056.4
1057.2
1058.0
1058.8
1059.6
1060.4
1061.2
1062.0
1062.8
1063.6
1064.4
1065.2
1066.0
1066.8
1067.6
1068.4
1069.2
1070.0
1070.8
1071.6
1072.4
1073.2
1074.0
1074.8
1075.6
1076.4
1077.2
1078.0
1078.8
1079.6
1080.4
1081.2
1082.0
1082.8
1083.6
1084.4
1085.2
1086.0
1086.8
1087.6
1088.4
1089.2
1090.0
1090.8
1091.6
1092.4
1093.2
1094.0
1094.8
1095.6
1096.4
1097.2
1098.0
1098.8
1099.6
1100.4
1101.2
1102.0
1102.8
1103.6
1104.4
1105.2
1106.0
1106.8
1107.6
1108.4
1109.2
1110.0
1110.8
1111.6
1112.4
1113.2
1114.0
1114.8
1115.6
1116.4
1117.2
1118.0
1118.8
1119.6
1120.4
1121.2
1122.0
1122.8
1123.6
1124.4
1125.2
1126.0
1126.8
1127.6
1128.4
1129.2
1130.0
1130.8
1131.6
1132.4
1133.2
1134.0
1134.8
1135.6
1136.4
1137.2
1138.0
1138.8
1139.6
1140.4
1141.2
1142.0
1142.8
1143.6
1144.4
1145.2
1146.0
1146.8
1147.6
1148.4
1149.2
1150.0
1150.8
1151.6
1152.4
1153.2
1154.0
1154.8
1155.6
1156.4
1157.2
1158.0
1158.8
1159.6
1160.4
1161.2
1162.0
1162.8
1163.6
1164.4
1165.2
1166.0
1166.8
1167.6
1168.4
1169.2
1170.0
1170.8
1171.6
1172.4
1173.2
1174.0
1174.8
1175.6
1176.4
1177.2
1178.0
1178.8
1179.6
1180.4
1181.2
1182.0
1182.8
1183.6
1184.4
1185.2
1186.0
1186.8
1187.6
1188.4
1189.2
1190.0
1190.8
1191.6
1192.4
1193.2
1194.0
1194.8
1195.6
1196.4
1197.2
1198.0
1198.8
1199.6
1200.4
1201.2
1202.0
1202.8
1203.6
1204.4
1205.2
1206.0
1206.8
1207.6
1208.4
1209.2
1210.0
1210.8
1211.6
1212.4
1213.2
1214.0
1214.8
1215.6
1216.4
1217.2
1218.0
1218.8
1219.6
1220.4
1221.2
1222.0
1222.8
1223.6
1224.4
1225.2
1226.0
1226.8
1227.6
1228.4
1229.2
1230.0
1230.8
1231.6
1232.4
1233.2
1234.0
1234.8
1235.6
1236.4
1237.2
1238.0
1238.8
1239.6
1240.4
1241.2
1242.0
1242.8
1243.6
1244.4
1245.2
1246.0
1246.8
1247.6
1248.4
1249.2
1250.0
1250.8
1251.6
1252.4
1253.2
1254.0
1254.8
1255.6
1256.4
1257.2
1258.0
1258.8
1259.6
1260.4
1261.2
1262.0
1262.8
1263.6
1264.4
1265.2
1266.0
1266.8
1267.6
1268.4
1269.2
1270.0
1270.8
1271.6
1272.4
1273.2
1274.0
1274.8
1275.6
1276.4
1277.2
1278.0
1278.8
1279.6
1280.4
1281.2
1282.0
1282.8
1283.6
1284.4
1285.2
1286.0
1286.8
1287.6
1288.4
1289.2
1290.0
1290.8
1291.6
1292.4
1293.2
1294.0
1294.8
1295.6
1296.4
1297.2
1298.0
1298.8
1299.6
1300.4
1301.2
1302.0
1302.8
1303.6
1304.4
1305.2
1306.0
1306.8
1307.6
1308.4
1309.2
1310.0
1310.8
1311.6
1312.4
1313.2
1314.0
1314.8
1315.6
1316.4
1317.2
1318.0
1318.8
1319.6
1320.4
1321.2
1322.0
1322.8
1323.6
1324.4
1325.2
1326.0
1326.8
1327.6
1328.4
1329.2
1330.0
1330.8
1331.6
1332.4
1333.2
1334.0
1334.8
1335.6
1336.4
1337.2
1338.0
1338.8
1339.6
1340.4
1341.2
1342.0
1342.8
1343.6
1344.4
1345.2
1346.0
1346.8
1347.6
1348.4
1349.2
1350.0
1350.8
1351.6
1352.4
1353.2
1354.0
1354.8
1355.6
1356.4
1357.2
1358.0
1358.8
1359.6
1360.4
1361.2
1362.0
1362.8
1363.6
1364.4
1365.2
1366.0
1366.8
1367.6
1368.4
1369.2
1370.0
1370.8
1371.6
1372.4
1373.2
1374.0
1374.8
1375.6
1376.4
1377.2
1378.0
1378.8
1379.6
1380.4
1381.2
1382.0
1382.8
1383.6
1384.4
1385.2
1386.0
1386.8
1387.6
1388.4
1389.2
1390.0
1390.8
1391.6
1392.4
1393.2
1394.0
1394.8
1395.6
1396.4
1397.2
1398.0
1398.8
1399.6
1400.4
1401.2
1402.0
1402.8
1403.6
1404.4
1405.2
1406.0
1406.8
1407.6
1408.4
1409.2
1410.0
1410.8
1411.6
1412.4
1413.2
1414.0
1414.8
1415.6
1416.4
1417.2
1418.0
1418.8
1419.6
1420.4
1421.2
1422.0
1422.8
1423.6
1424.4
1425.2
1426.0
1426.8
1427.6
1428.4
1429.2
1430.0
1430.8
1431.6
1432.4
1433.2
1434.0
1434.8
1435.6
1436.4
1437.2
1438.0
1438.8
1439.6
1440.4
1441.2
1442.0
1442.8
1443.6
1444.4
1445.2
1446.0
1446.8
1447.6
1448.4
1449.2
1450.0
1450.8
1451.6
1452.4
1453.2
1454.0
1454.8
1455.6
1456.4
1457.2
1458.0
1458.8
1459.6
1460.4
1461.2
1462.0
1462.8
1463.6
1464.4
1465.2
1466.0
1466.8
1467.6
1468.4
1469.2
1470.0
1470.8
1471.6
1472.4
1473.2
1474.0
1474.8
1475.6
1476.4
1477.2
1478.0
1478.8
1479.6
1480.4
1481.2
1482.0
1482.8
1483.6
1484.4
1485.2
1486.0
1486.8
1487.6
1488.4
1489.2
1490.0
1490.8
1491.6
1492.4
1493.2
1494.0
1494.8
1495.6
1496.4
1497.2
1498.0
1498.8
1499.6
1500.4
1501.2
1502.0
1502.8
1503.6
1504.4
1505.2
1506.0
1506.8
1507.6