

INDEX OF SHEETS

| | |
|-------------|--------------------------------------|
| SHEET NO. 1 | TITLE PAGE |
| " 2 | TYPICAL CROSS-SECTION OF IMPROVEMENT |
| " 3 | BANKING AND WIDENING TABLES |
| " 4-8 | PLAN AND PROFILE SHEETS |
| " 9 | STANDARD STRUCTURE SHEET |
| " 10 | 3 C. I. BOX CULVERTS |
| " 11 | 5-28 PIPE CULVERTS |
| " 12 | 5-30 UNDERDRAINS |
| " 13 | 5-34 C.E.M. ROADS |
| " 14-24 | CROSS SECTIONS |

BRIDGING, BARS, CULVERTS AND GUARD RAIL

| FED. ROAD DIST. NO. | STATE | PROJECT NO. | SHEET NO. | TOTAL SHEETS |
|---------------------|-------|-------------|-----------|--------------|
| 0 | VT. | 150 B | 125 | 24 |

STATE OF VERMONT
STATE HIGHWAY DEPARTMENT

PLAN AND PROFILE OF PROPOSED
STATE HIGHWAY
NATIONAL RECOVERY SECONDARY HIGHWAY PROJECT

TOWN OF ENOSBURG

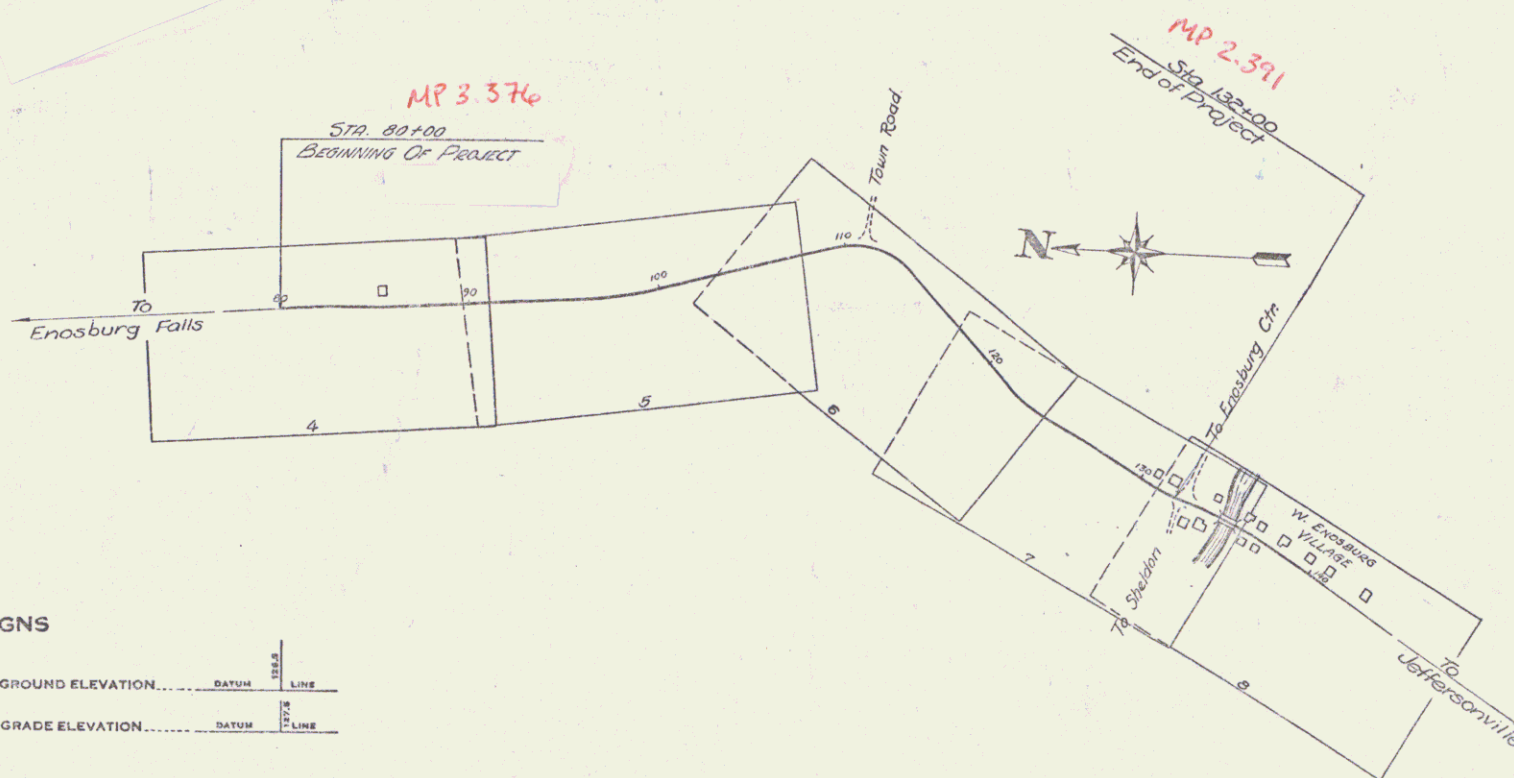
ENOSBURG FALLS - JEFFERSONVILLE ROAD
FROM THE SOUTHERLY END OF PROJECT N.R.S. 150 500 FT. NORTH OF
RESIDENCE OF HARLEY OVITT SOUTHERLY 0.984 MILES TO A POINT IN
WEST ENOSBURG VILLAGE 300 FT. NORTH OF BRIDGE OVER TYLER
BRANCH

LENGTH OF PROJECT 5200 FT. • 0.984 MI.



Standard sheet 5-28 approved by
the Chief Engineer on July 16, 1933.
Standard sheet 5-30 approved by the Chief
Engineer on Aug. 15, 1933.

(To Be Returned To R.O.W. Division)
Town of Enosburg
TOWN ENGINEER
RIGHT-OF-WAY DIVISION



CONVENTIONAL SIGNS

| | |
|-------------------|-----------------------|
| COUNTY LINE | GROUND ELEVATION |
| TOWN LINE | GRADE ELEVATION |
| FENCE LINE | CURVE DATA |
| STONE WALL | DEFLECTION ANGLE |
| UNFENCED PROPERTY | DEGREE OF CURVE |
| GUARD RAIL | RADIUS OF CURVE |
| TRAVELED WAY | TANGENT DISTANCE |
| RAILROAD | LENGTH OF CURVE |
| RETAINING WALL | EXTERNAL DISTANCE |
| CENTER LINE | POINT OF INTERSECTION |
| SURVEY LINE | POINT OF CURVE |
| CULVERT | POINT OF TANGENT |
| DROP INLET | POINT ON TANGENT |
| TROLLEY POLE | |
| POWER POLE | |
| TELEPHONE POLE | |
| TREES | |
| HEDGE | |

SCALES

| | |
|----------------|-----------|
| TITLE | 1" = 300' |
| PLAN | 1" = 50' |
| PROFILE | 1" = 10' |
| CROSS SECTIONS | 1" = 5' |

Notes
These plans are subject to such revisions
as may be required by the Bureau of Public
Roads or the Commissioner of Highways.
Construction is to be carried on in accordance
with the plans and Standard Road and Bridge
Specifications of 1930 including all subsequent
approved revisions, the National Recovery Act
Special provisions and such revised specifications
and special provisions as are submitted with the
plans.

APPROVED Oct 18, 1934
Commissioner of Highways

Pin # 000047

Route VT 108

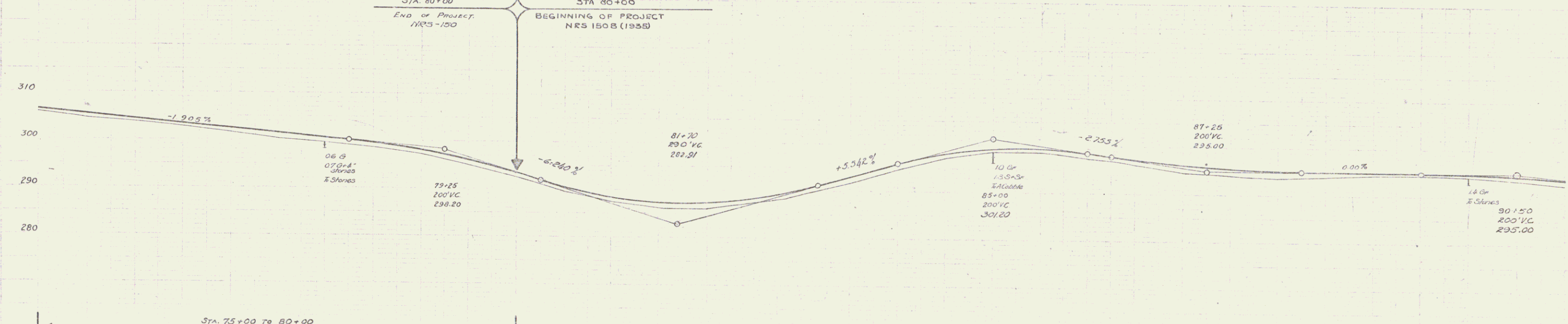
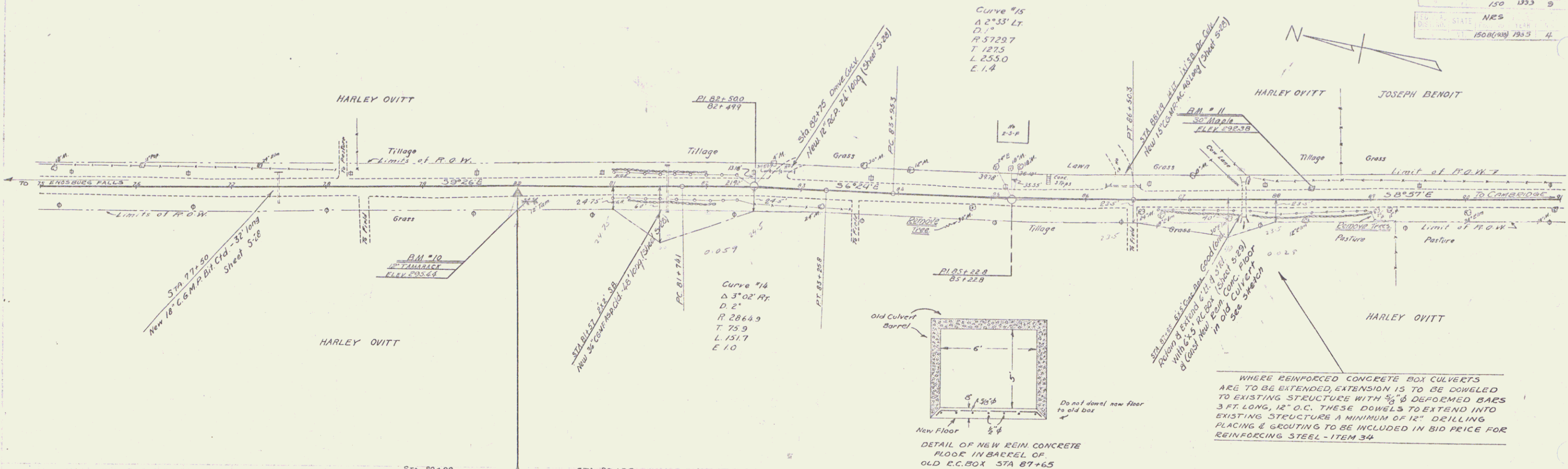
Date 10/18/1934

RECOMMENDED
DISTRICT ENGINEER BUREAU OF PUBLIC ROADS
RECOMMENDED FOR APPROVAL
CHIEF ENGINEER BUREAU OF PUBLIC ROADS
APPROVED
DIRECTOR - BUREAU OF PUBLIC ROADS

SERIES MAPS NO. 100-47 FILED
SHEET 1 OF 24

DIST. # 8 PLANS

NRS.
 150 1333 9 20
 NRS
 150(1333) 7935 4 74

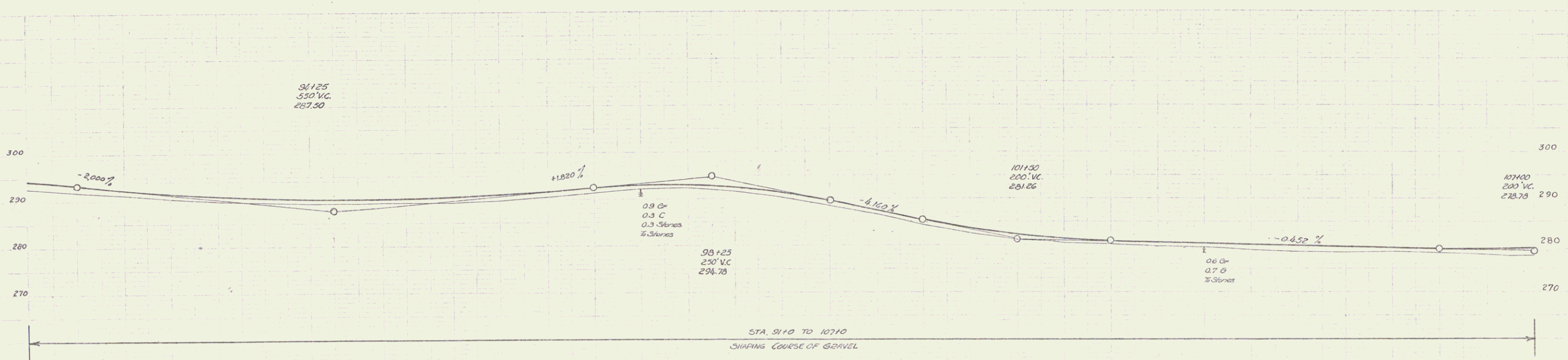
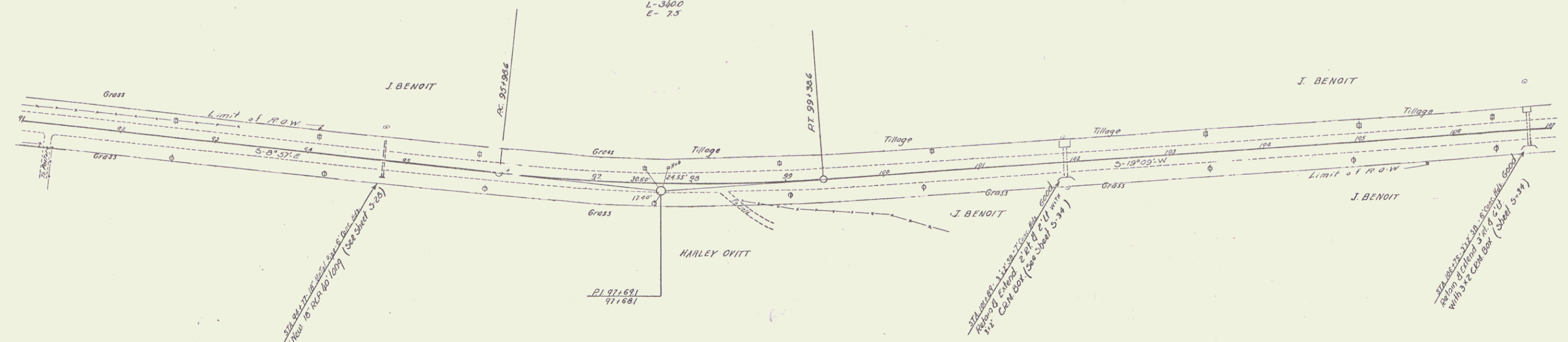


| Station | Elevation |
|---------|-----------|
| 75 | 295.6 |
| 76 | 295.7 |
| 77 | 295.8 |
| 78 | 295.9 |
| 79 | 296.0 |
| 80 | 296.1 |
| 81 | 296.2 |
| 82 | 296.3 |
| 83 | 296.4 |
| 84 | 296.5 |
| 85 | 296.6 |
| 86 | 296.7 |
| 87 | 296.8 |
| 88 | 296.9 |
| 89 | 297.0 |
| 90 | 297.1 |
| 91 | 297.2 |

BM #10 SPIRE IN ROOT OF TAMMARCH 14 FT. RT STA 80+10 EL 295.64
 BM #11 " " " " 30' MAPLE 17 FT. LT STA 83+89 EL 292.38
 SERIES NRS NO 150-B (1935) SHEET 4 OF 24
 SERIES BRING 130 SHEET NO 9 OF 28

NRS.
1500 1935 5 24
(1935)

Curve #16
Δ-10°12' LI
D-3°
R-1901
T-170.5
L-3400
C-7.5

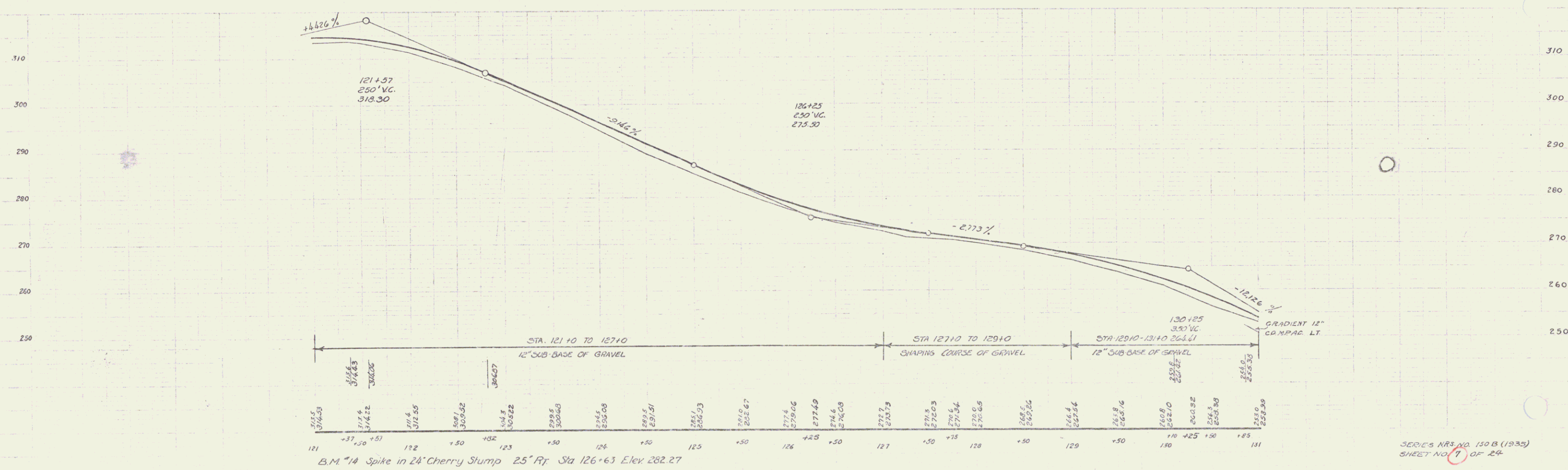
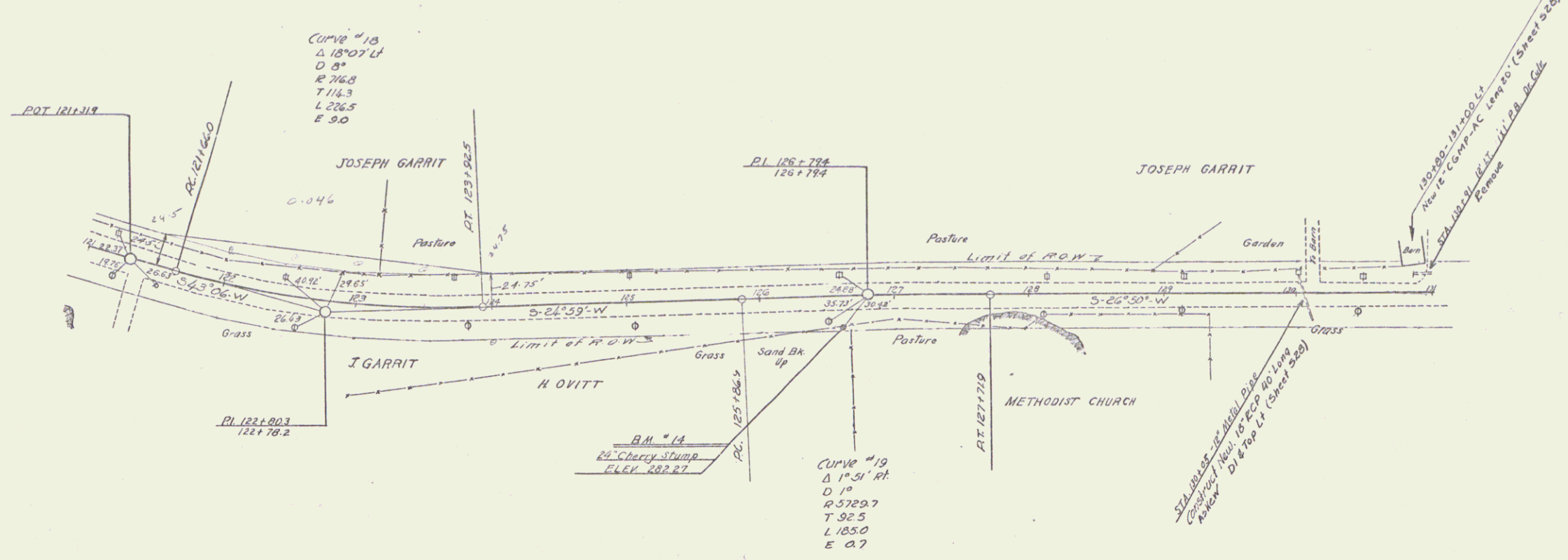


PLAN VIEW

PROFILE VIEW

STA. 91+0 TO 107+0
SHAPING COURSE OF GRAVEL

SERIES NO. 1500 (1935)
SHEET NO. 5 OF 29

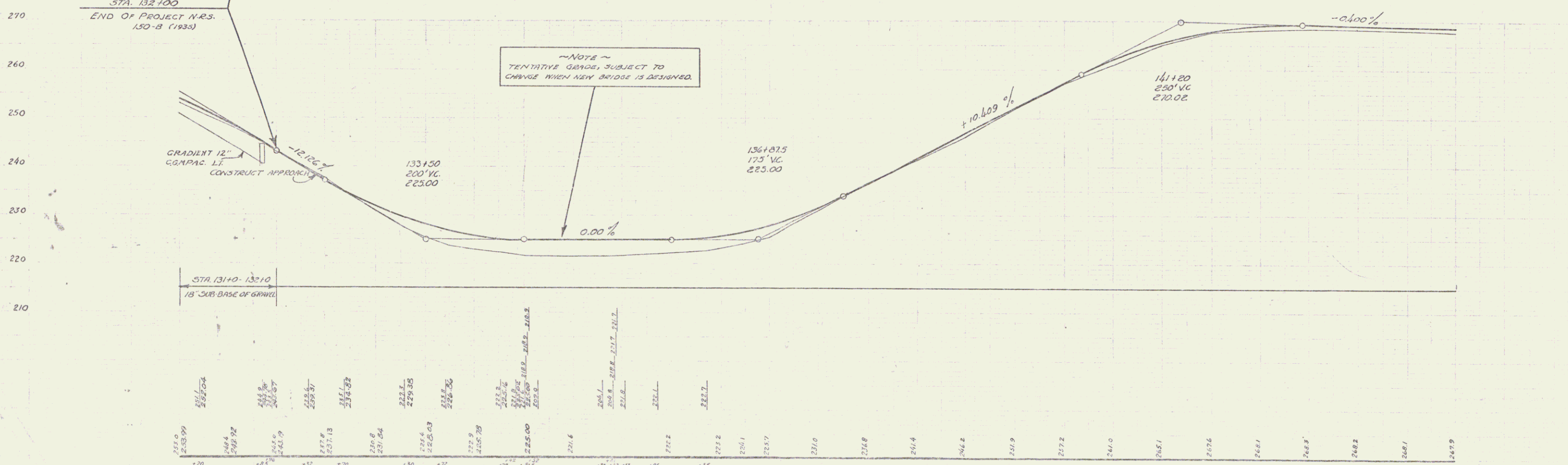
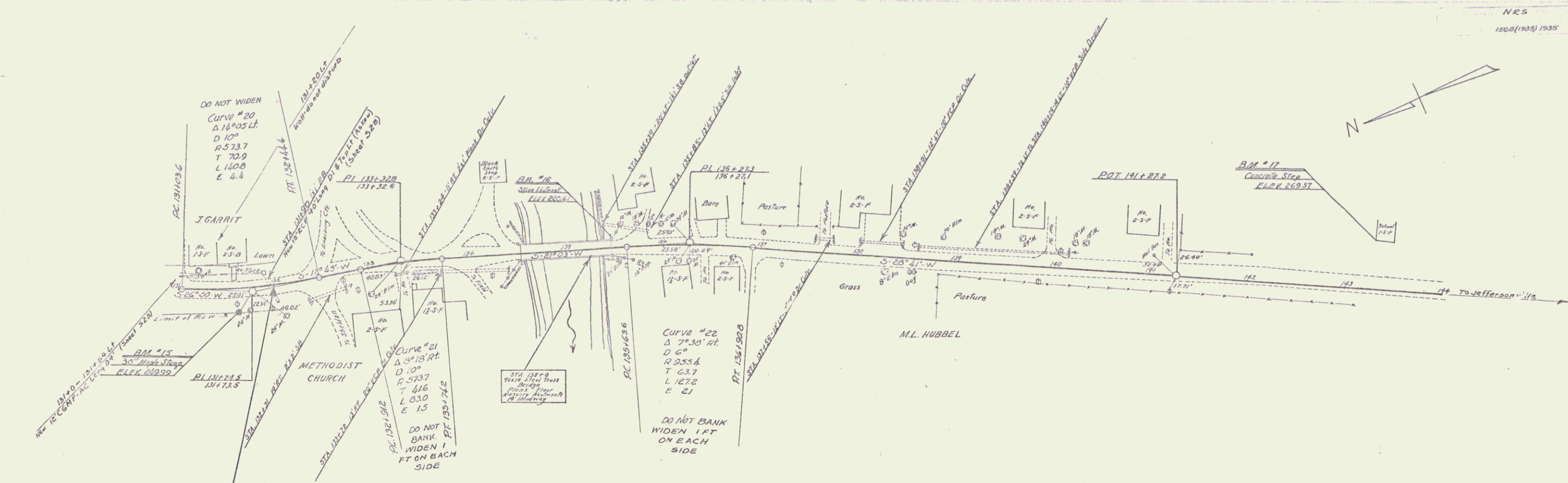


BUTNAM
 BLOOMING

REVISIONS

DATE

B.M. #14 Spike in 24" Cherry Slump 25' Rf Sta 126+63 Elev 282.27



| Station | Elevation | Station | Elevation | Station | Elevation |
|---------|-----------|---------|-----------|---------|-----------|
| 131+00 | 208.99 | 132+00 | 211.18 | 133+00 | 213.54 |
| 131+10 | 209.52 | 132+10 | 211.80 | 133+10 | 214.08 |
| 131+20 | 210.19 | 132+20 | 212.47 | 133+20 | 214.63 |
| 131+30 | 210.87 | 132+30 | 213.15 | 133+30 | 215.18 |
| 131+40 | 211.54 | 132+40 | 213.82 | 133+40 | 215.73 |
| 131+50 | 212.21 | 132+50 | 214.49 | 133+50 | 216.28 |
| 131+60 | 212.88 | 132+60 | 215.16 | 133+60 | 216.83 |
| 131+70 | 213.55 | 132+70 | 215.83 | 133+70 | 217.38 |
| 131+80 | 214.22 | 132+80 | 216.50 | 133+80 | 217.93 |
| 131+90 | 214.89 | 132+90 | 217.17 | 133+90 | 218.48 |
| 132+00 | 215.56 | 133+00 | 217.84 | 134+00 | 219.03 |
| 132+10 | 216.23 | 133+10 | 218.51 | 134+10 | 219.58 |
| 132+20 | 216.90 | 133+20 | 219.18 | 134+20 | 220.13 |
| 132+30 | 217.57 | 133+30 | 219.85 | 134+30 | 220.68 |
| 132+40 | 218.24 | 133+40 | 220.52 | 134+40 | 221.23 |
| 132+50 | 218.91 | 133+50 | 221.19 | 134+50 | 221.78 |
| 132+60 | 219.58 | 133+60 | 221.86 | 134+60 | 222.33 |
| 132+70 | 220.25 | 133+70 | 222.53 | 134+70 | 222.88 |
| 132+80 | 220.92 | 133+80 | 223.20 | 134+80 | 223.43 |
| 132+90 | 221.59 | 133+90 | 223.87 | 134+90 | 223.98 |
| 133+00 | 222.26 | 134+00 | 224.54 | 135+00 | 224.53 |
| 133+10 | 222.93 | 134+10 | 225.21 | 135+10 | 225.08 |
| 133+20 | 223.60 | 134+20 | 225.88 | 135+20 | 225.63 |
| 133+30 | 224.27 | 134+30 | 226.55 | 135+30 | 226.18 |
| 133+40 | 224.94 | 134+40 | 227.22 | 135+40 | 226.73 |
| 133+50 | 225.61 | 134+50 | 227.89 | 135+50 | 227.28 |
| 133+60 | 226.28 | 134+60 | 228.56 | 135+60 | 227.83 |
| 133+70 | 226.95 | 134+70 | 229.23 | 135+70 | 228.38 |
| 133+80 | 227.62 | 134+80 | 229.90 | 135+80 | 228.93 |
| 133+90 | 228.29 | 134+90 | 230.57 | 135+90 | 229.48 |
| 134+00 | 228.96 | 135+00 | 231.24 | 136+00 | 230.03 |
| 134+10 | 229.63 | 135+10 | 231.91 | 136+10 | 230.58 |
| 134+20 | 230.30 | 135+20 | 232.58 | 136+20 | 231.13 |
| 134+30 | 230.97 | 135+30 | 233.25 | 136+30 | 231.68 |
| 134+40 | 231.64 | 135+40 | 233.92 | 136+40 | 232.23 |
| 134+50 | 232.31 | 135+50 | 234.59 | 136+50 | 232.78 |
| 134+60 | 232.98 | 135+60 | 235.26 | 136+60 | 233.33 |
| 134+70 | 233.65 | 135+70 | 235.93 | 136+70 | 233.88 |
| 134+80 | 234.32 | 135+80 | 236.60 | 136+80 | 234.43 |
| 134+90 | 234.99 | 135+90 | 237.27 | 136+90 | 234.98 |
| 135+00 | 235.66 | 136+00 | 237.94 | 137+00 | 235.53 |
| 135+10 | 236.33 | 136+10 | 238.61 | 137+10 | 236.08 |
| 135+20 | 237.00 | 136+20 | 239.28 | 137+20 | 236.63 |
| 135+30 | 237.67 | 136+30 | 239.95 | 137+30 | 237.18 |
| 135+40 | 238.34 | 136+40 | 240.62 | 137+40 | 237.73 |
| 135+50 | 239.01 | 136+50 | 241.29 | 137+50 | 238.28 |
| 135+60 | 239.68 | 136+60 | 241.96 | 137+60 | 238.83 |
| 135+70 | 240.35 | 136+70 | 242.63 | 137+70 | 239.38 |
| 135+80 | 241.02 | 136+80 | 243.30 | 137+80 | 239.93 |
| 135+90 | 241.69 | 136+90 | 243.97 | 137+90 | 240.48 |
| 136+00 | 242.36 | 137+00 | 244.64 | 138+00 | 241.03 |
| 136+10 | 243.03 | 137+10 | 245.31 | 138+10 | 241.58 |
| 136+20 | 243.70 | 137+20 | 245.98 | 138+20 | 242.13 |
| 136+30 | 244.37 | 137+30 | 246.65 | 138+30 | 242.68 |
| 136+40 | 245.04 | 137+40 | 247.32 | 138+40 | 243.23 |
| 136+50 | 245.71 | 137+50 | 247.99 | 138+50 | 243.78 |
| 136+60 | 246.38 | 137+60 | 248.66 | 138+60 | 244.33 |
| 136+70 | 247.05 | 137+70 | 249.33 | 138+70 | 244.88 |
| 136+80 | 247.72 | 137+80 | 250.00 | 138+80 | 245.43 |
| 136+90 | 248.39 | 137+90 | 250.67 | 138+90 | 245.98 |
| 137+00 | 249.06 | 138+00 | 251.34 | 139+00 | 246.53 |
| 137+10 | 249.73 | 138+10 | 252.01 | 139+10 | 247.08 |
| 137+20 | 250.40 | 138+20 | 252.68 | 139+20 | 247.63 |
| 137+30 | 251.07 | 138+30 | 253.35 | 139+30 | 248.18 |
| 137+40 | 251.74 | 138+40 | 254.02 | 139+40 | 248.73 |
| 137+50 | 252.41 | 138+50 | 254.69 | 139+50 | 249.28 |
| 137+60 | 253.08 | 138+60 | 255.36 | 139+60 | 249.83 |
| 137+70 | 253.75 | 138+70 | 256.03 | 139+70 | 250.38 |
| 137+80 | 254.42 | 138+80 | 256.70 | 139+80 | 250.93 |
| 137+90 | 255.09 | 138+90 | 257.37 | 139+90 | 251.48 |
| 138+00 | 255.76 | 139+00 | 258.04 | 140+00 | 252.03 |
| 138+10 | 256.43 | 139+10 | 258.71 | 140+10 | 252.58 |
| 138+20 | 257.10 | 139+20 | 259.38 | 140+20 | 253.13 |
| 138+30 | 257.77 | 139+30 | 260.05 | 140+30 | 253.68 |
| 138+40 | 258.44 | 139+40 | 260.72 | 140+40 | 254.23 |
| 138+50 | 259.11 | 139+50 | 261.39 | 140+50 | 254.78 |
| 138+60 | 259.78 | 139+60 | 262.06 | 140+60 | 255.33 |
| 138+70 | 260.45 | 139+70 | 262.73 | 140+70 | 255.88 |
| 138+80 | 261.12 | 139+80 | 263.40 | 140+80 | 256.43 |
| 138+90 | 261.79 | 139+90 | 264.07 | 140+90 | 256.98 |
| 139+00 | 262.46 | 140+00 | 264.74 | 141+00 | 257.53 |
| 139+10 | 263.13 | 140+10 | 265.41 | 141+10 | 258.08 |
| 139+20 | 263.80 | 140+20 | 266.08 | 141+20 | 258.63 |
| 139+30 | 264.47 | 140+30 | 266.75 | 141+30 | 259.18 |
| 139+40 | 265.14 | 140+40 | 267.42 | 141+40 | 259.73 |
| 139+50 | 265.81 | 140+50 | 268.09 | 141+50 | 260.28 |
| 139+60 | 266.48 | 140+60 | 268.76 | 141+60 | 260.83 |
| 139+70 | 267.15 | 140+70 | 269.43 | 141+70 | 261.38 |
| 139+80 | 267.82 | 140+80 | 270.10 | 141+80 | 261.93 |
| 139+90 | 268.49 | 140+90 | 270.77 | 141+90 | 262.48 |
| 140+00 | 269.16 | 141+00 | 271.44 | 142+00 | 263.03 |
| 140+10 | 269.83 | 141+10 | 272.11 | 142+10 | 263.58 |
| 140+20 | 270.50 | 141+20 | 272.78 | 142+20 | 264.13 |
| 140+30 | 271.17 | 141+30 | 273.45 | 142+30 | 264.68 |
| 140+40 | 271.84 | 141+40 | 274.12 | 142+40 | 265.23 |
| 140+50 | 272.51 | 141+50 | 274.79 | 142+50 | 265.78 |
| 140+60 | 273.18 | 141+60 | 275.46 | 142+60 | 266.33 |
| 140+70 | 273.85 | 141+70 | 276.13 | 142+70 | 266.88 |
| 140+80 | 274.52 | 141+80 | 276.80 | 142+80 | 267.43 |
| 140+90 | 275.19 | 141+90 | 277.47 | 142+90 | 267.98 |
| 141+00 | 275.86 | 142+00 | 278.14 | 143+00 | 268.53 |
| 141+10 | 276.53 | 142+10 | 278.81 | 143+10 | 269.08 |
| 141+20 | 277.20 | 142+20 | 279.48 | 143+20 | 269.63 |
| 141+30 | 277.87 | 142+30 | 280.15 | 143+30 | 270.18 |
| 141+40 | 278.54 | 142+40 | 280.82 | 143+40 | 270.73 |
| 141+50 | 279.21 | 142+50 | 281.49 | 143+50 | 271.28 |
| 141+60 | 279.88 | 142+60 | 282.16 | 143+60 | 271.83 |
| 141+70 | 280.55 | 142+70 | 282.83 | 143+70 | 272.38 |
| 141+80 | 281.22 | 142+80 | 283.50 | 143+80 | 272.93 |
| 141+90 | 281.89 | 142+90 | 284.17 | 143+90 | 273.48 |
| 142+00 | 282.56 | 143+00 | 284.84 | 144+00 | 274.03 |
| 142+10 | 283.23 | 143+10 | 285.51 | 144+10 | 274.58 |
| 142+20 | 283.90 | 143+20 | 286.18 | 144+20 | 275.13 |
| 142+30 | 284.57 | 143+30 | 286.85 | 144+30 | 275.68 |
| 142+40 | 285.24 | 143+40 | 287.52 | 144+40 | 276.23 |
| 142+50 | 285.91 | 143+50 | 288.19 | 144+50 | 276.78 |
| 142+60 | 286.58 | 143+60 | 288.86 | 144+60 | 277.33 |
| 142+70 | 287.25 | 143+70 | 289.53 | 144+70 | 277.88 |
| 142+80 | 287.92 | 143+80 | 290.20 | 144+80 | 278.43 |
| 142+90 | 288.59 | 143+90 | 290.87 | 144+90 | 278.98 |
| 143+00 | 289.26 | 144+00 | 291.54 | 145+00 | 279.53 |
| 143+10 | 289.93 | 144+10 | 292.21 | 145+10 | 280.08 |
| 143+20 | 290.60 | 144+20 | 292.88 | 145+20 | 280.63 |
| 143+30 | 291.27 | 144+30 | 293.55 | 145+30 | 281.18 |
| 143+40 | 291.94 | 144+40 | 294.22 | 145+40 | 281.73 |
| 143+50 | 292.61 | 144+50 | 294.89 | 145+50 | 282.28 |
| 143+60 | 293.28 | 144+60 | 295.56 | 145+60 | 282.83 |
| 143+70 | 293.95 | 144+70 | 296.23 | 145+70 | 283.38 |
| 143+80 | 294.62 | 144+80 | 296.90 | 145+80 | 283.93 |
| 143+90 | 295.29 | 144+90 | 297.57 | 145+90 | 284.48 |
| 144+00 | 295.96 | 145+00 | 298.24 | 146+00 | 285.03 |
| 144+10 | 296.63 | 145+10 | 298.91 | 146+10 | 285.58 |
| 144+20 | 297.30 | 145+20 | 299.58 | 146+20 | 286.13 |
| 144+30 | 297.97 | 145+30 | 300.25 | 146+30 | 286.68 |
| 144+40 | 298.64 | 145+40 | 300.92 | 146+40 | 287.23 |
| 144+50 | 299.31 | 145+50 | 301.59 | 146+50 | 287.78 |
| 144+60 | 299.98 | 145+60 | 302.26 | 146+60 | 288.33 |
| 144+70 | 300.65 | 145+70 | 302.93 | 146+70 | 288.88 |
| 144+80 | 301.32 | 145+80 | 303.60 | 146+80 | 289.43 |
| 144+90 | 301.99 | 145+90 | 304.27 | 146+90 | 289.98 |
| 145+00 | 302.66 | 146+00 | 304.94 | 147+00 | 290.53 |
| 145+10 | 303.33 | 146+10 | 305.61 | 147+10 | 291.08 |
| 145+20 | 304.00 | 146+20 | 306.28 | 147+20 | 291.63 |
| 145+30 | 304.67 | 146+30 | 306.95 | 147+30 | 292.18 |
| 145+40 | 305.34 | 146+40 | 307.62 | 147+40 | 292.73 |