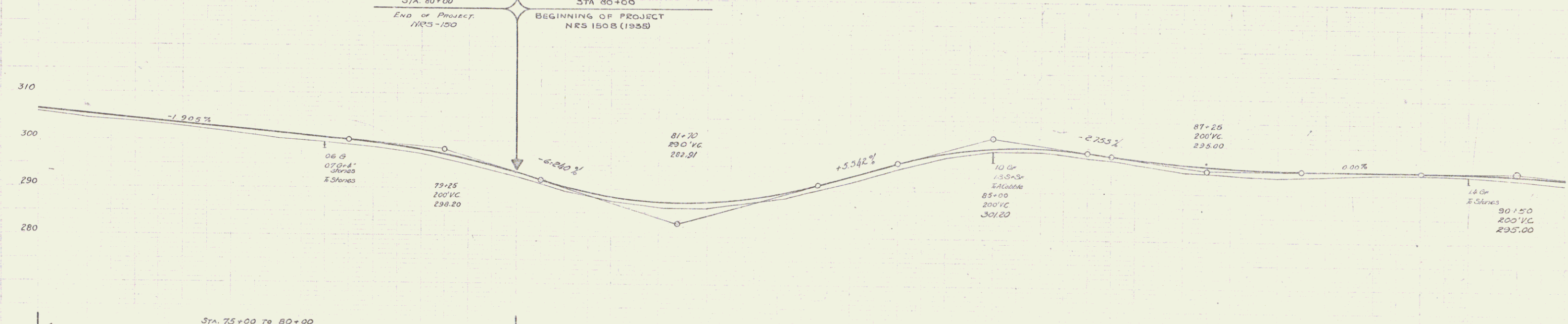
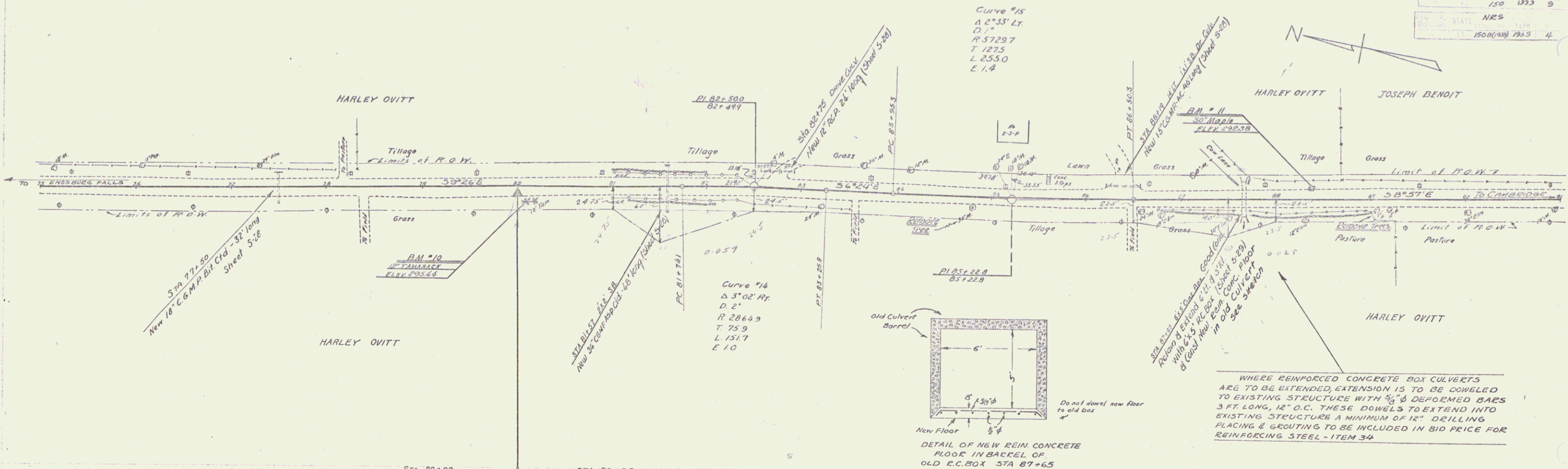


NRS.  
 150 1333 9 20  
 NRS  
 150(1333) 7935 4 74



Station	Elevation
75	295.6
76	295.7
77	295.8
78	295.9
79	296.0
80	296.1
81	296.2
82	296.3
83	296.4
84	296.5
85	296.6
86	296.7
87	296.8
88	296.9
89	297.0
90	297.1
91	297.2

BM #10 SPIRE IN ROOT OF TAMMARCH 14 FT. RT STA 80+10 EL 295.64  
 BM #11 " " " " 30' MAPLE 17 FT. LT STA 83+89 EL 292.38

SERIES NRS NO 150-B (1935) SHEET 4 OF 24  
 SERIES BRING 130 SHEET NO 9 OF 28