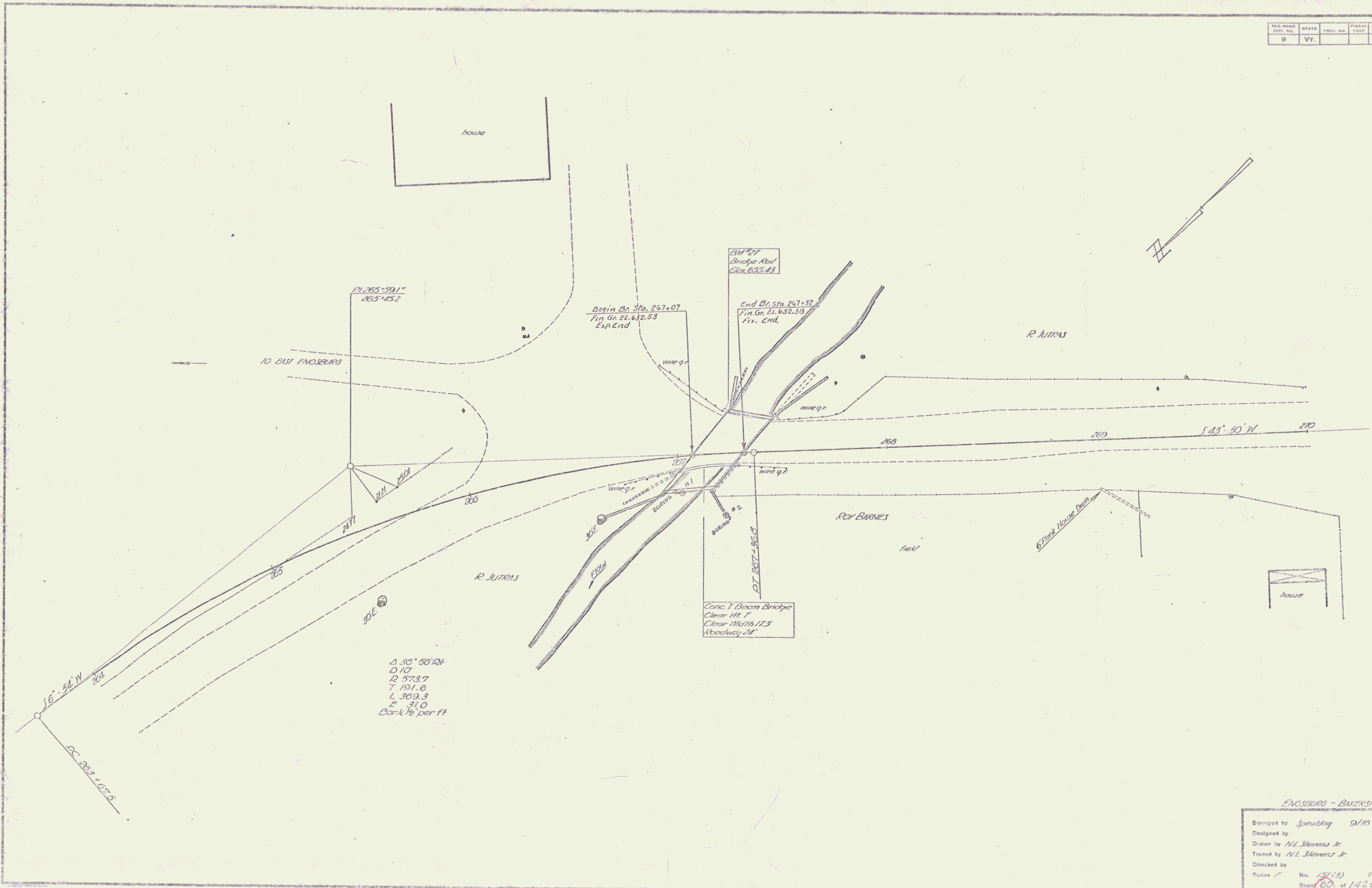


FED. ROAD DIST. NO.	STATE	FISCAL YEAR	SHEET NO.	TOTAL SHEETS
9	Vt.			



EVANSBURG - BAKERSFIELD

Surveyed by Spaulding 9/19  
 Designed by  
 Drawn by M. Stevens Jr.  
 Traced by M. Stevens Jr.  
 Checked by  
 Series No. 13(13) Filed  
 Sheet 60 of 142 Sheets