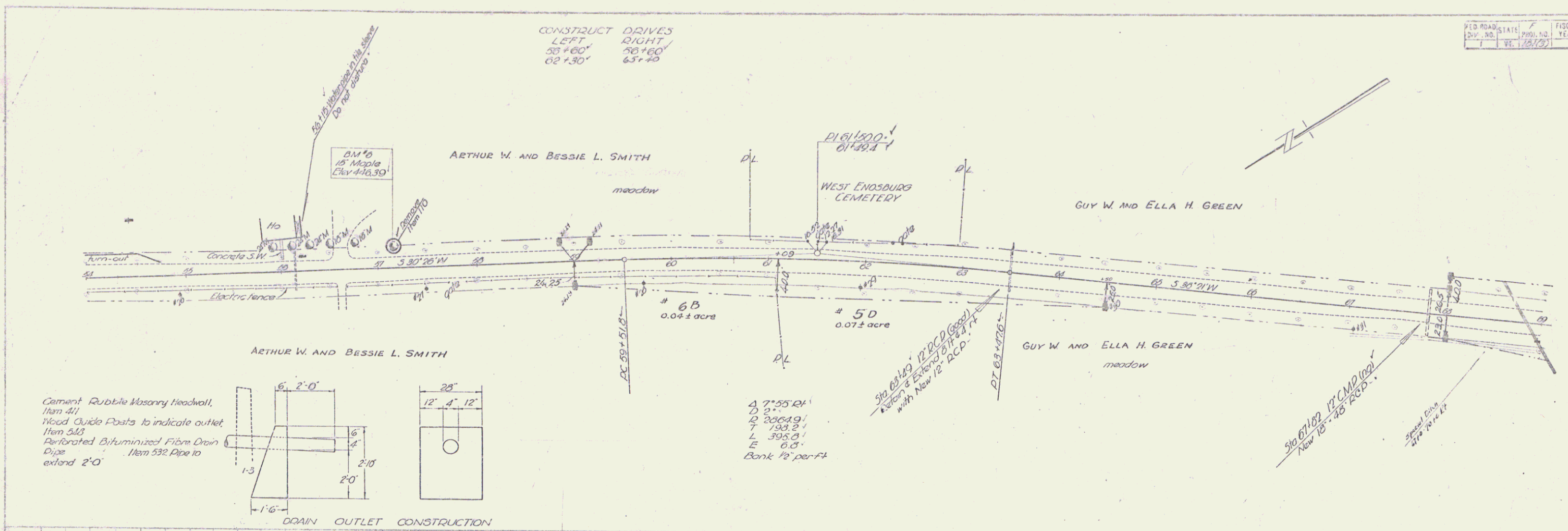
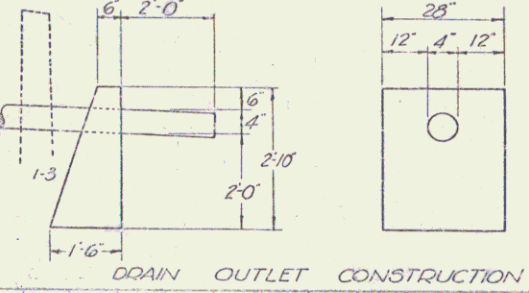


FED. ROAD DIST. NO.	STATE	PROJ. NO.	FISCAL YEAR	SHEET NO.	TOTAL SHEETS
7	IL	151(3)	1970	8	142

CONSTRUCT DRIVES  
 LEFT RIGHT  
 58+60 56+60  
 02+30 63+40



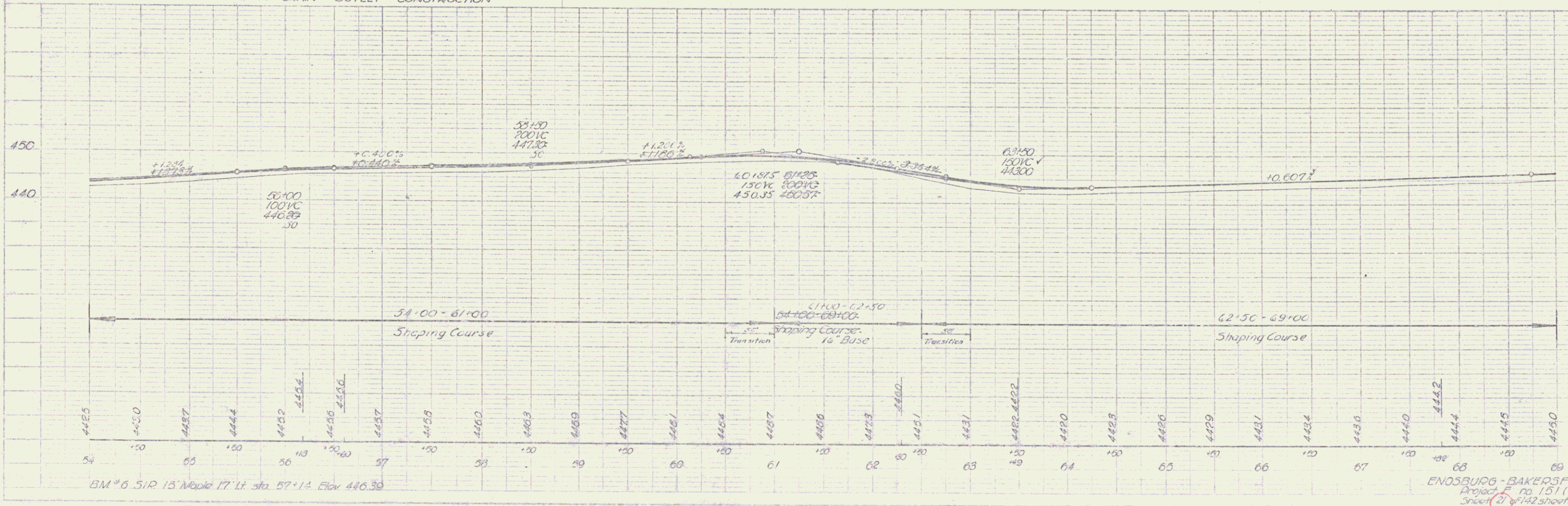
Cement Rubble Masonry Headwall, Item 411  
 Wood Guide Posts to indicate outlet, Item 543  
 Perforated Bituminized Fibre Drain Pipe, Item 532 Pipe to extend 2'-0"



4 7'-55 RT  
 D 2'  
 D 200C91  
 L 193.2'  
 E 0.0'  
 Bank 10' per ft

PLAN SHEET NO. 151(3)  
 DATE: 10/1/70  
 PROJECT: ENOSBURG - BAKERSFIELD  
 DRAWN BY: J. M. HILL  
 CHECKED BY: B. J. HILL

PLAN SHEET NO. 151(3)  
 DATE: 10/1/70  
 PROJECT: ENOSBURG - BAKERSFIELD  
 DRAWN BY: J. M. HILL  
 CHECKED BY: B. J. HILL



BM #6 S.P. 15' Maple 17' Lt. Sta. 57+14. Elev. 446.30

ENOSBURG - BAKERSFIELD  
 Project No. 151(3)  
 Sheet 8 of 142 sheets