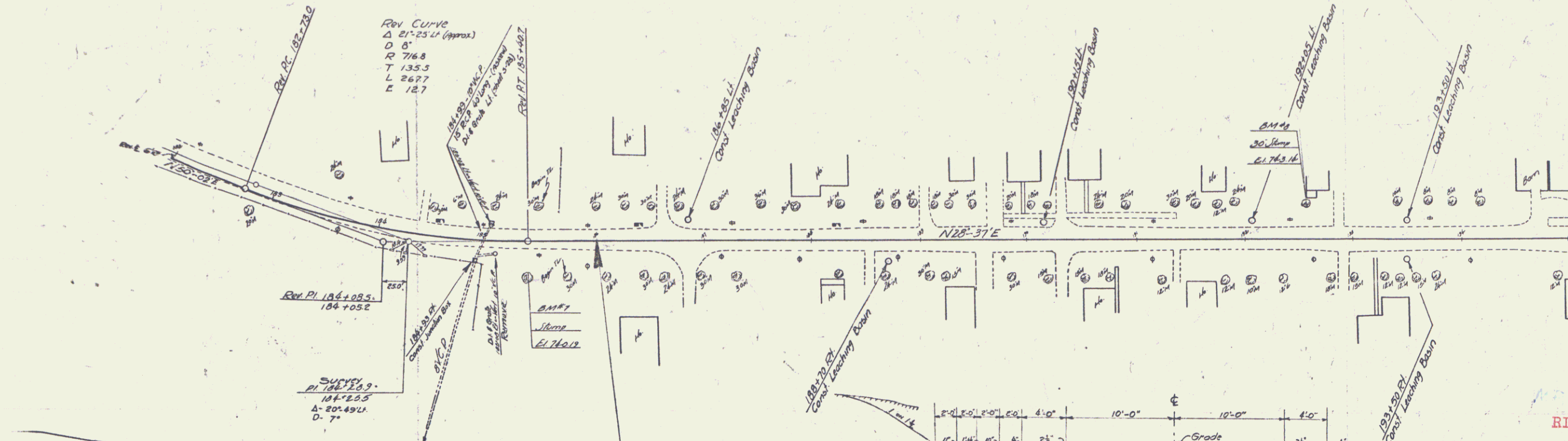
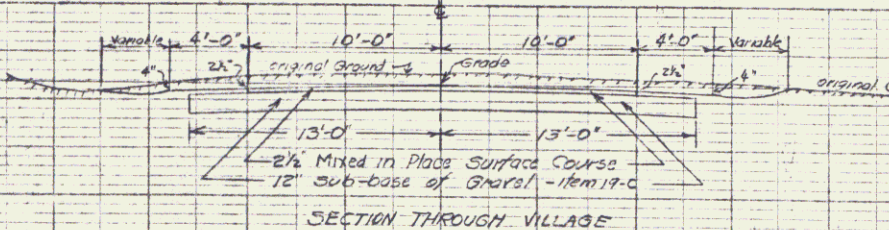
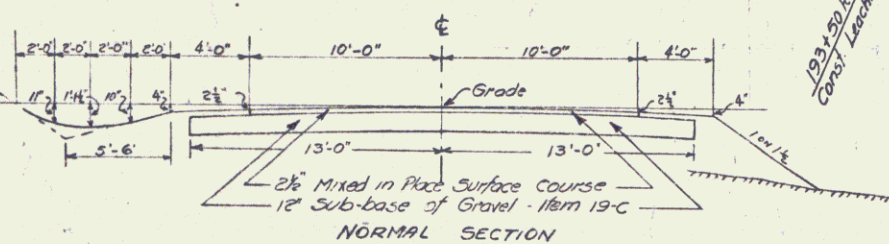


FED. ROAD DIST. NO.	STATE	FED. AID	FISCAL YEAR	SHEET NO.	TOTAL SHEETS
9	VT.				

VT 108



This section is designed with the idea of excess cut south of here to 164+00. It is to be made without construct this time.



MP 3.470-4.361

RIGHT-OF-WAY DIVISION  
TOWN FILE

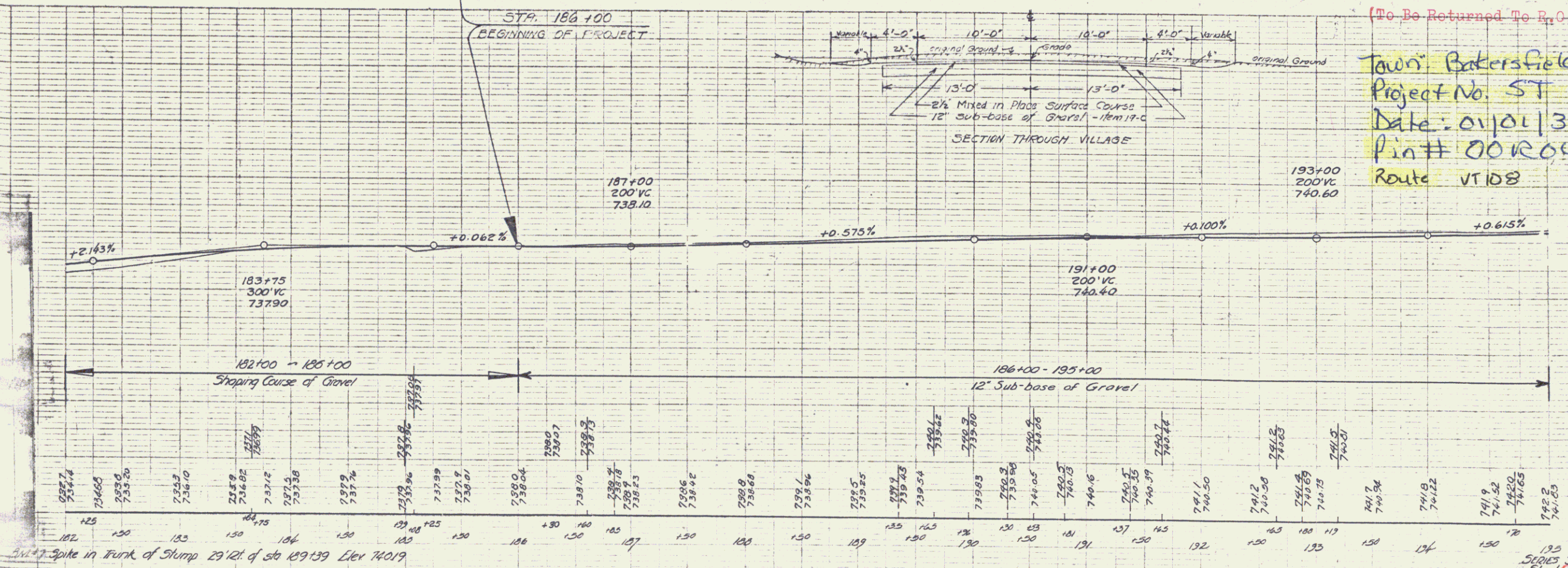
PERPETUAL

Town of VT 108

(To Be Returned To R.O.W. Division)

Town Bakersfield  
Project No. ST 151L  
Date: 01/10/39  
Plan # 002045  
Route VT 108

Bakersfield 151L

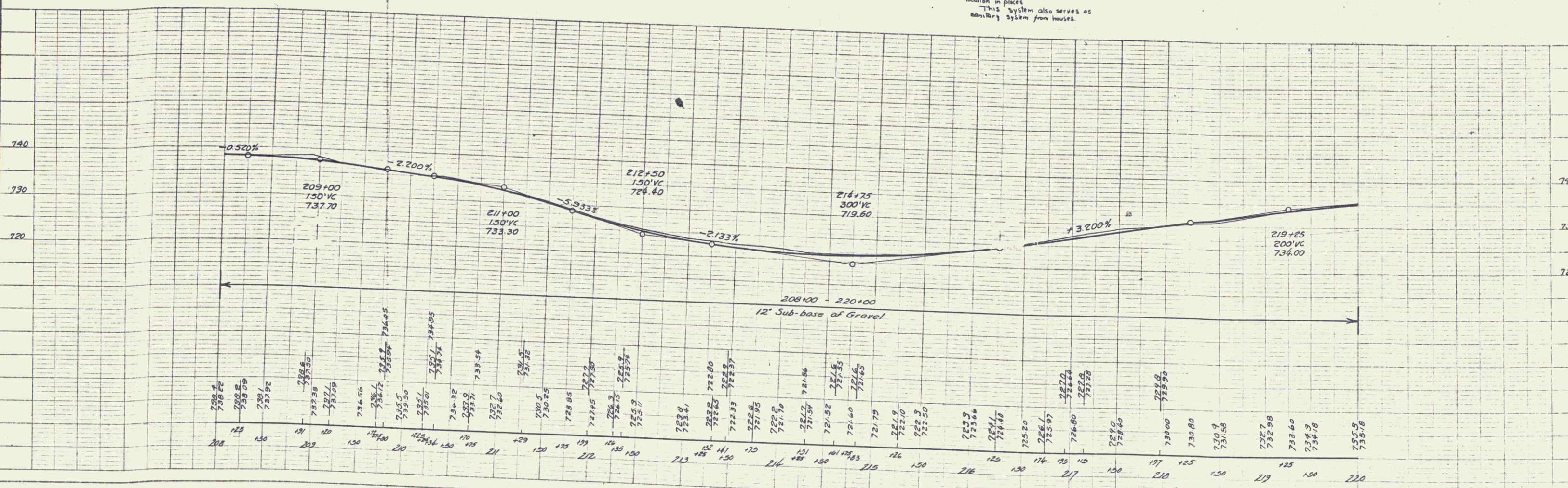
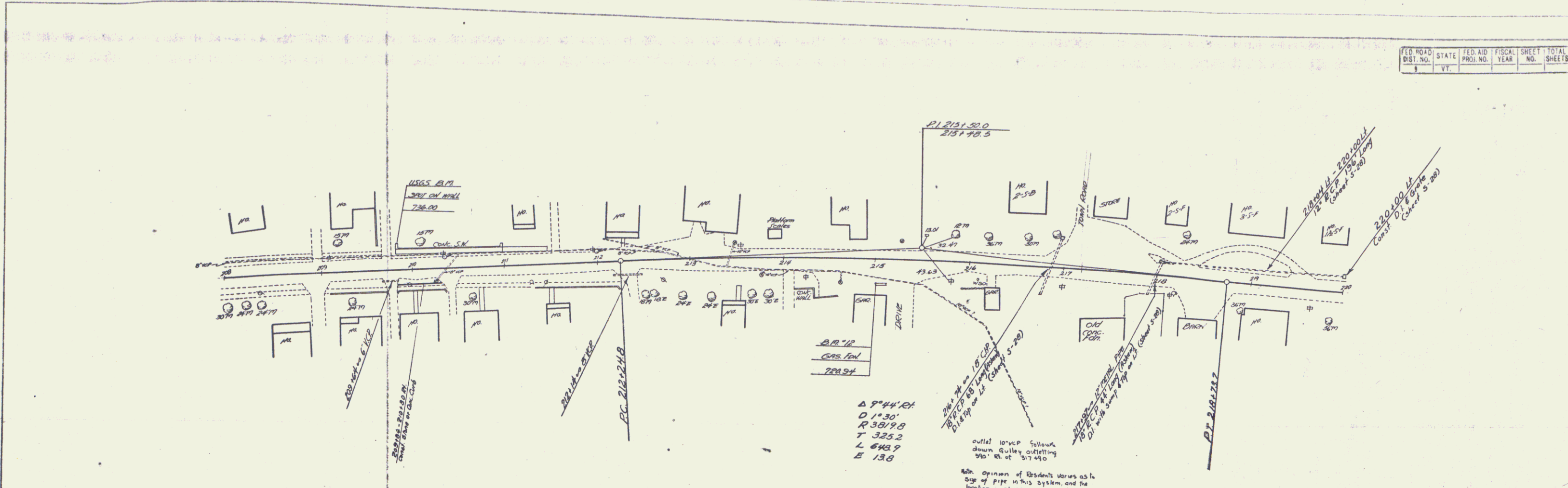


BAKERSFIELD  
SERIES 311E, NO. 151-L  
Sheet 1 of 2



PLAN  
 DRAWN BY: [Signature]  
 CHECKED BY: [Signature]  
 DATE: [Date]

PROFILE  
 DRAWN BY: [Signature]  
 CHECKED BY: [Signature]  
 DATE: [Date]



$\Delta 9^{\circ}44'21''$   
 $D 1^{\circ}30'$   
 $R 3819.8$   
 $T 325.2$   
 $L 648.9$   
 $E 13.8$

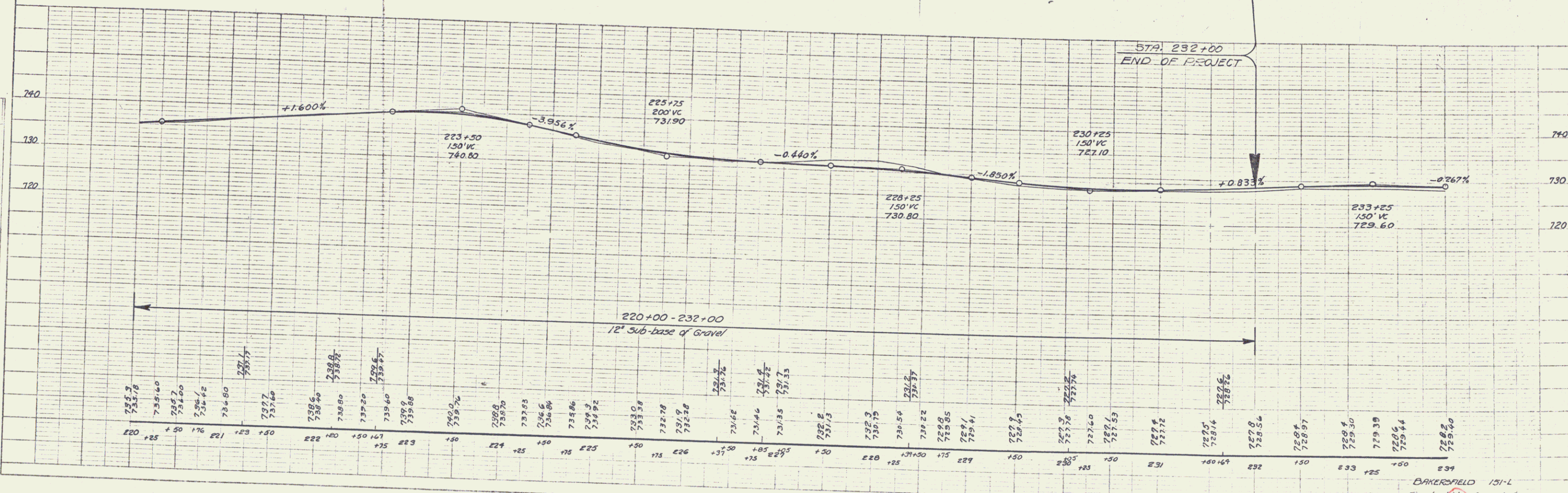
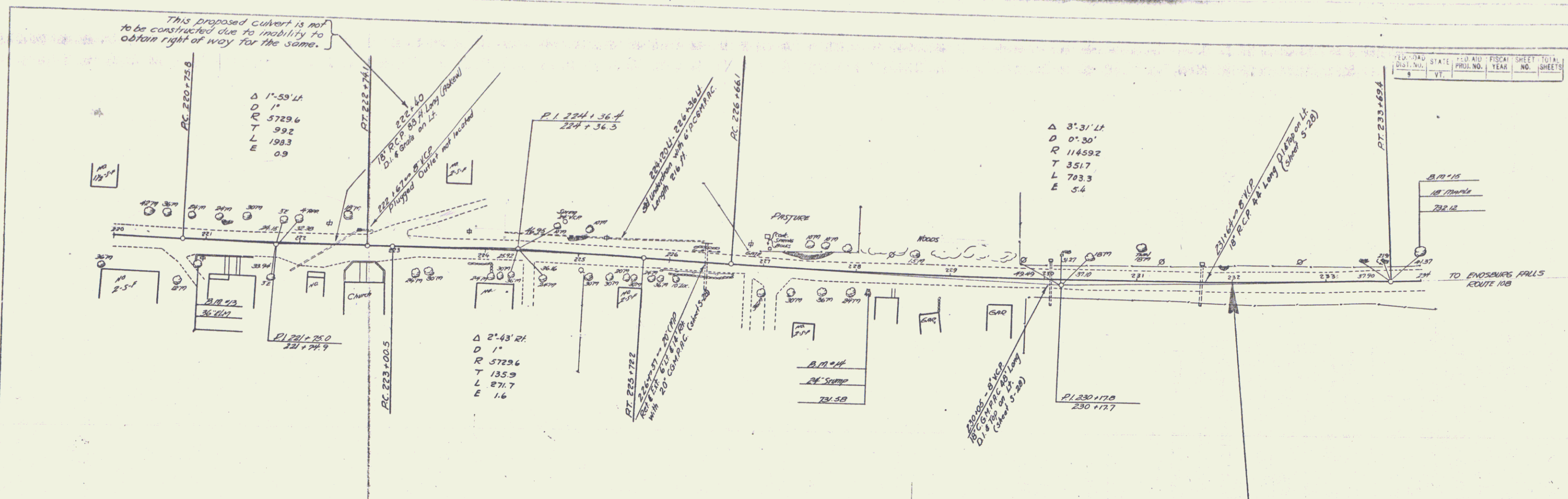
Outlet 10" up follows  
 down Gully, outletting  
 965' E of 317.490

6th opinion of student serves as to  
 size of pipe in this system, and the  
 location in place.  
 This system also serves as  
 sanitary system from houses.

PLAN  
 DATE  
 DRAWN BY  
 CHECKED BY  
 IN CHARGE  
 NO. OF SHEETS  
 SHEET NO.

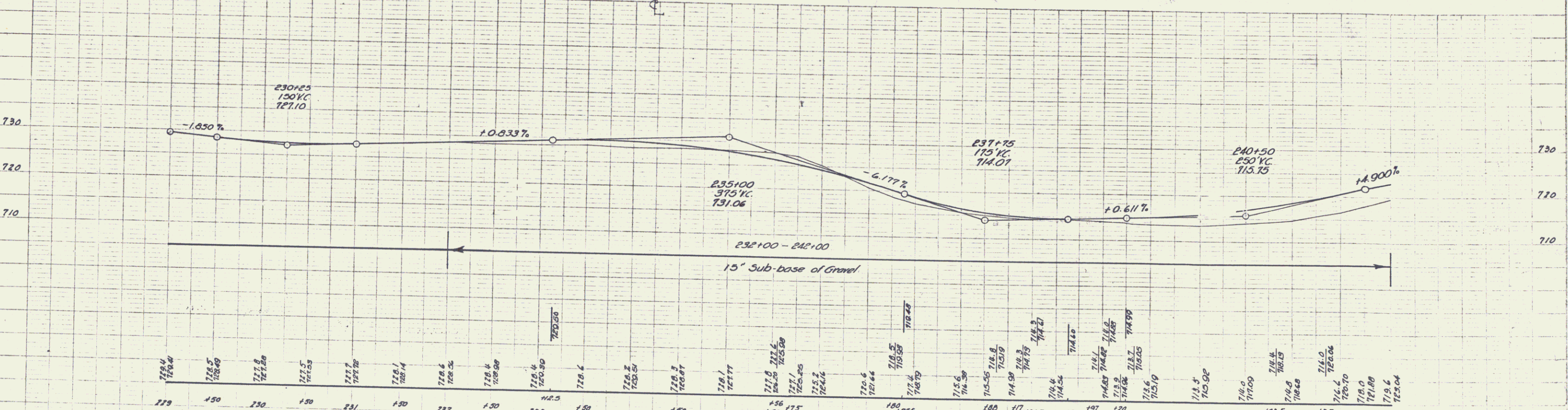
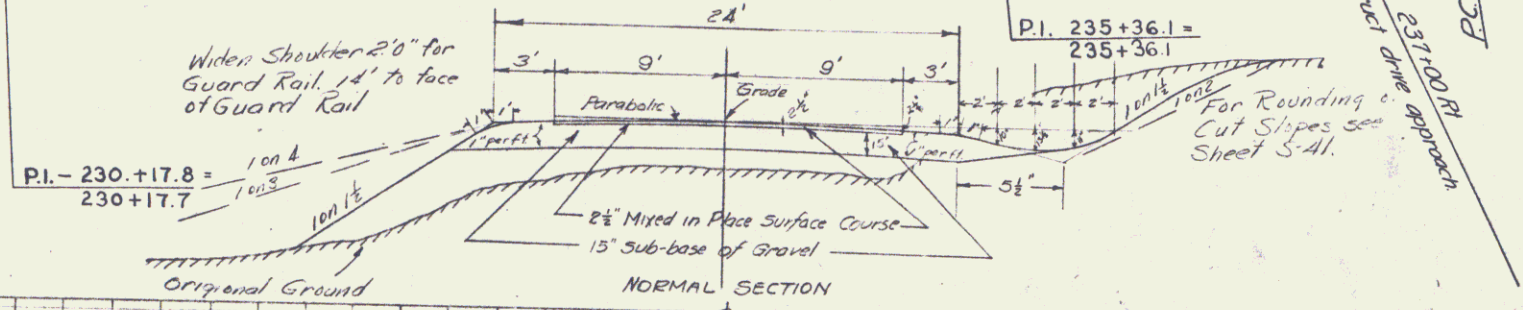
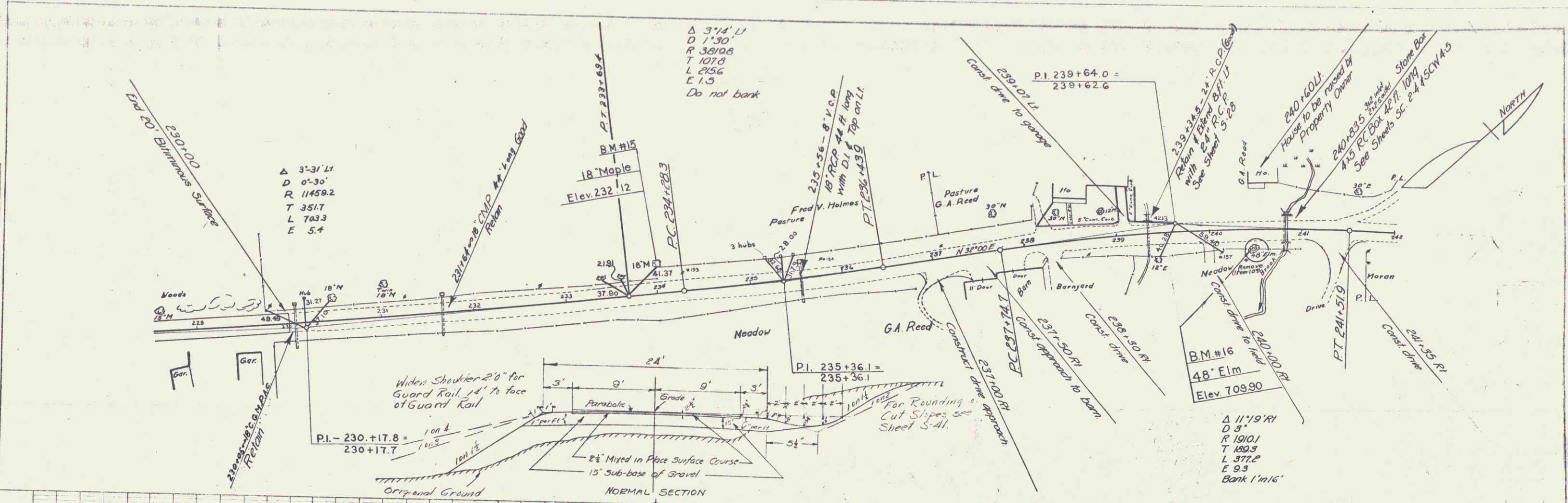
PROJ. NO. 151-L  
 DIST. NO. 4  
 STATE VT.  
 YEAR 1983  
 SHEET NO. 1-1

151-L STATE VT. PROJ. NO. 151-L YEAR 1983 SHEET NO. 1-1



BAKERSFIELD 151-L  
 Sheet 4 of 10

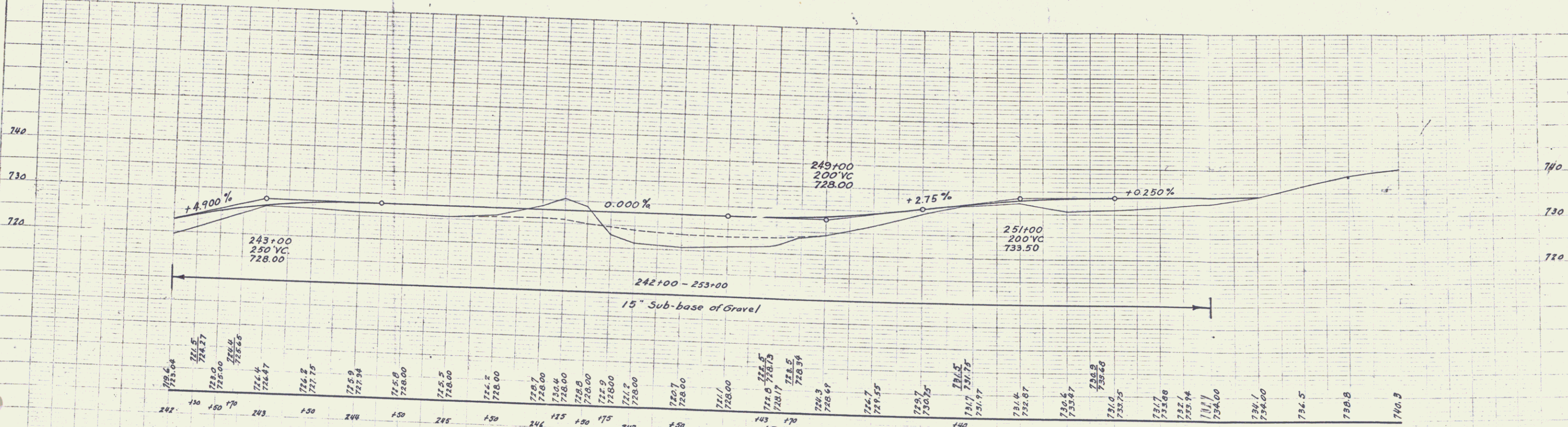
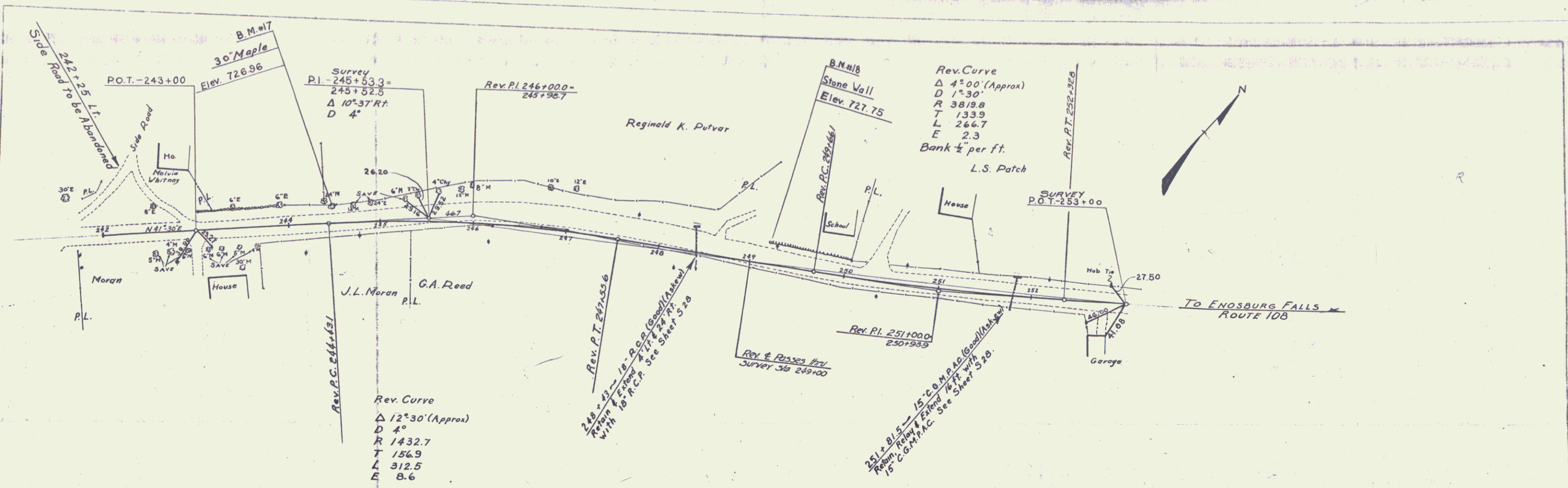
PLAN  
 DATE: 12-15-1940  
 DRAWN BY: J. J. JOHNSON  
 CHECKED BY: J. J. JOHNSON  
 TITLE: BAKERSFIELD 151-L (EXTENSION)  
 SHEET 5



BM # 15 Spike in root of 18" Maple 28 ft. Lt. of Sta. 234+01 Elev. 732.12  
 BM # 16 Spike in root of 48" Elm. 18 ft. Rt. of Sta. 240+52 Elev. 709.90

BAKERSFIELD  
 151-L (EXTENSION)  
 SHEET 5

PLAN  
 SURVEYED BY  
 TRACED  
 MICHAEL W. JOHNSON  
 1944



B.M. #17 Spike in root of 30' Maple 175 ft. Lt. of Sta. 244+45 Elev. 726.96  
 B.M. #18 Paint spot on stone wall 23 ft. Lt. of Sta. 249+17 Elev. 727.75

BAKERSFIELD  
 151-L (Extension)  
 SHEET 6

6