

INDEX OF SHEETS

SHEET NO.	TITLE PAGE
2+2	TYPICAL CROSS-SECTION OF IMPROVEMENT 6" SURFACE COURSE OF GENL (ITEM 22)
3	BANKING AND WIDENING TABLES
4-7	PLAN AND PROFILE STA.
8	STANDARD STRUCTURE SHEET 5-28 PIPE CULVERTS
9	" " " " " " 5-29 BOX CULVERTS
10	STANDARD STRUCTURE SHEET 5-30 GUARD RAIL
11	" " " " " " 5-31 BOUNDARY MARKERS
12	" " " " " " 5-40 BARRICADES ETC
13	" " " " " " 5-41 ROUNDED SLOPES
14-34	CROSS SECTIONS

STANDARD STRUCTURE SHEETS APPROVED BY THE CHIEF ENGINEER

5-28 & 5-29 JULY 11, 1933
 5-30 AUG 15, 1933
 5-31 JULY 25, 1934

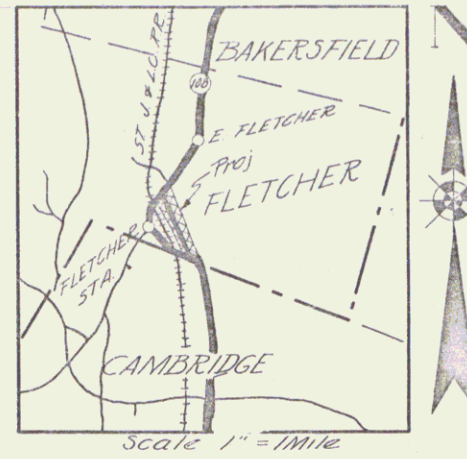
STATE OF VERMONT
 STATE HIGHWAY DEPARTMENT
PLAN AND PROFILE OF PROPOSED STATE HIGHWAY
 FEDERAL AID GRADE SEPARATION PROJECT

TOWN OF FLETCHER

JEFFERSONVILLE - ENOSBURG FALLS ROAD
 BEGINNING AT A POINT 1173.6 FT. NORTHERLY FROM THE CAMBRIDGE - FLETCHER TOWN LINE & EXTENDING NORTHERLY 0.583 MI.

LENGTH OF PROJECT 3082.7 FT. = 0.583 MI.

FED. ROAD DIST. NO.	STATE	F.I.C. NO.	PROJ. NO.	YEAR	SHEET NO.	TOTAL SHEETS
9	VT.	1070	1130	1	34	

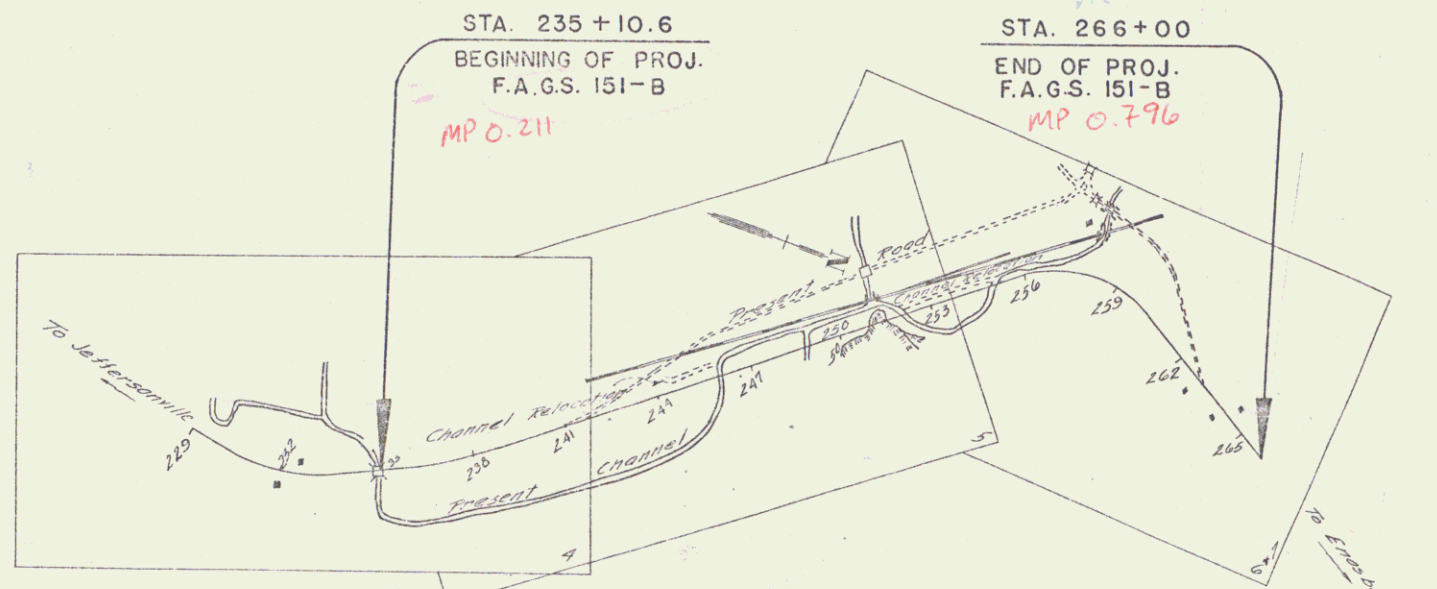


SCALES

TITLE	1" = 500'
VERTICAL	1" = 2'
PLAN	1" = 50'
PROFILE HOR.	1" = 50'
PROFILE VER.	1" = 10'
CROSS SECTIONS	1" = 5'

CONVENTIONAL SIGNS

COUNTY LINE	GROUND ELEVATION	DATUM	LINE
TOWN LINE	FENCE LINE	GRADE ELEVATION	DATUM
STONE WALL	UNFENCED PROPERTY	GUARD RAIL	TRAVELWAY
RAILROAD	RETAINING WALL	CURVEY LINE	CULVERT
DROP INLET	TROLLEY POLE	POWER POLE	TELEPHONE POLE
TREES	HEDGE	DEFLECTION ANGLE	DEGREE OF CURVE
RADIUS OF CURVE	TANGENT DISTANCE	LENGTH OF CURVE	EXTERNAL DISTANCE
POINT OF INTERSECTION	POINT OF CURVE	POINT OF TANGENT	POINT ON TANGENT



These plans are subject to such revisions as may be required by the Bureau of Public Roads or the Commissioner of Highways. Construction is to be carried out in accordance with the plans and Standard Road & Bridge Specification of 1936 as approved Dec 29, 1936 by the Bureau of Public Roads including all subsequent approved revisions and such revised specifications & special provisions as are submitted with the plans.

RIGHT-OF-WAY DIVISION
 TOWN FILE
 PERPETUAL
 Term of 10/108
 (To Be Returned To R.O.W. Division)

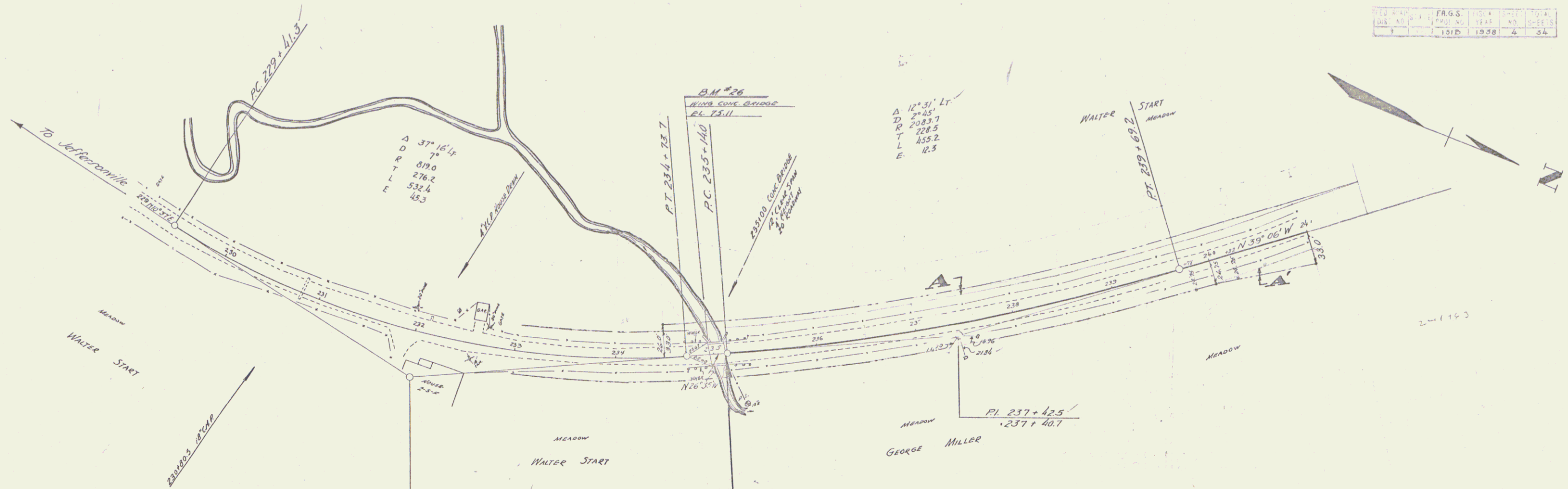
APPROVED: Nov. 1 1937
 Commissioner of Highways

SUBMITTED BY ORDER OF THE STATE HIGHWAY BOARD
 Pin # 00R042
 Route VT 108
 Date 10/25/1937

RECOMMENDED
 DISTRICT ENGINEER BUREAU OF PUBLIC ROADS
 RECOMMENDED FOR APPROVAL
 CHIEF ENGINEER BUREAU OF PUBLIC ROADS
 APPROVED
 DIRECTOR BUREAU OF PUBLIC ROADS

Approved Oct 29 1937
 Correct Jan 29 1937
 SERIES ENG. NO. 1513 FILED
 SHEET 1 OF 34

DIST # 8 PLANS



12° 31' Lt
 D 2° 45'
 R 208.7
 T 228.5
 L 855.2
 E 12.5

Δ 37° 16' 14"
 D 870.0
 R 276.2
 T 532.4
 L 45.3

SUR. PI. 232+17.5
 231+97.5

PI. 237+425
 237+407

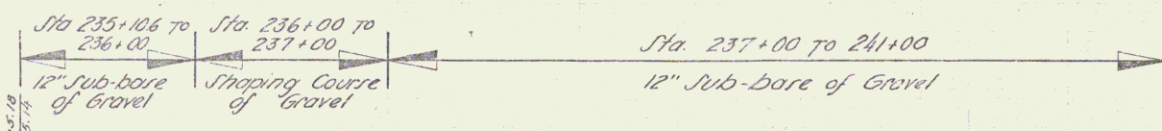
PARCEL	INSTRUMENT	DATE	GRANTOR	GRANTEE	RECORDED	REMARKS
A	Q.C.D.	1-4-38	WALTER B. START	STOFVT.	BOOK PAGE DATE	
A'	Q.C.D.	1-3-38	GEORGE E. MILLER	"	23 410 1-8-38	
					23 411 1-22-38	

Sta 235+10.6
 Beginning of Project
 F.A.G.S. - 151B

236+00
 200%
 74.13

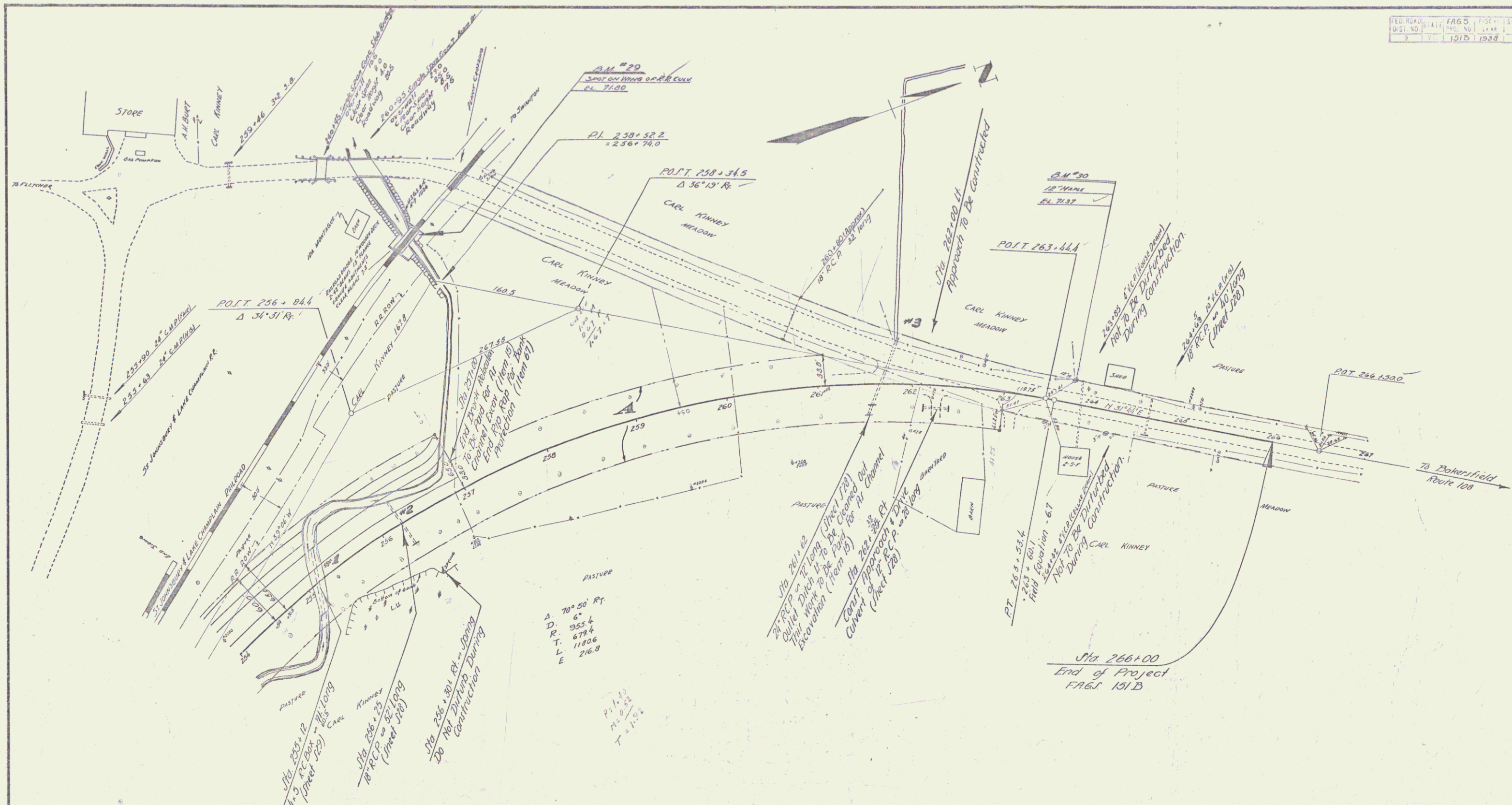
-1.126%

+0.027%



229	230	231	232	233	234	235	236	237	238	239	240	241
74.14	74.14	74.14	74.14	74.14	74.14	74.14	74.14	74.14	74.14	74.14	74.14	74.14

B.M. 26 SPOT ON WING OF CONC BRIDGE 12' LT STA 234+95 EL. 75.11



PARCEL	INSTRUMENT	DATE	GRANTOR	GRANTEE	RECORDED	REMARKS
A	Q.C.D.	12-2-37	CARL F. & MAEC. KINNEY	STOFVT	23	CUL. STA. 250+00 TO 256+85 TO 264+42 CUL. AT STA. 260+50 264+42 See also project F 151 (4)

Surveyed by G. M. LANE 9-37
 Designed by J. POSAR 9-37
 Drawn by J. POSAR 9-37
 Traced by J. POSAR 9-37
 Checked by
 Series 151B No. 151B Filed
 Sheet 6 of 36 Sheets