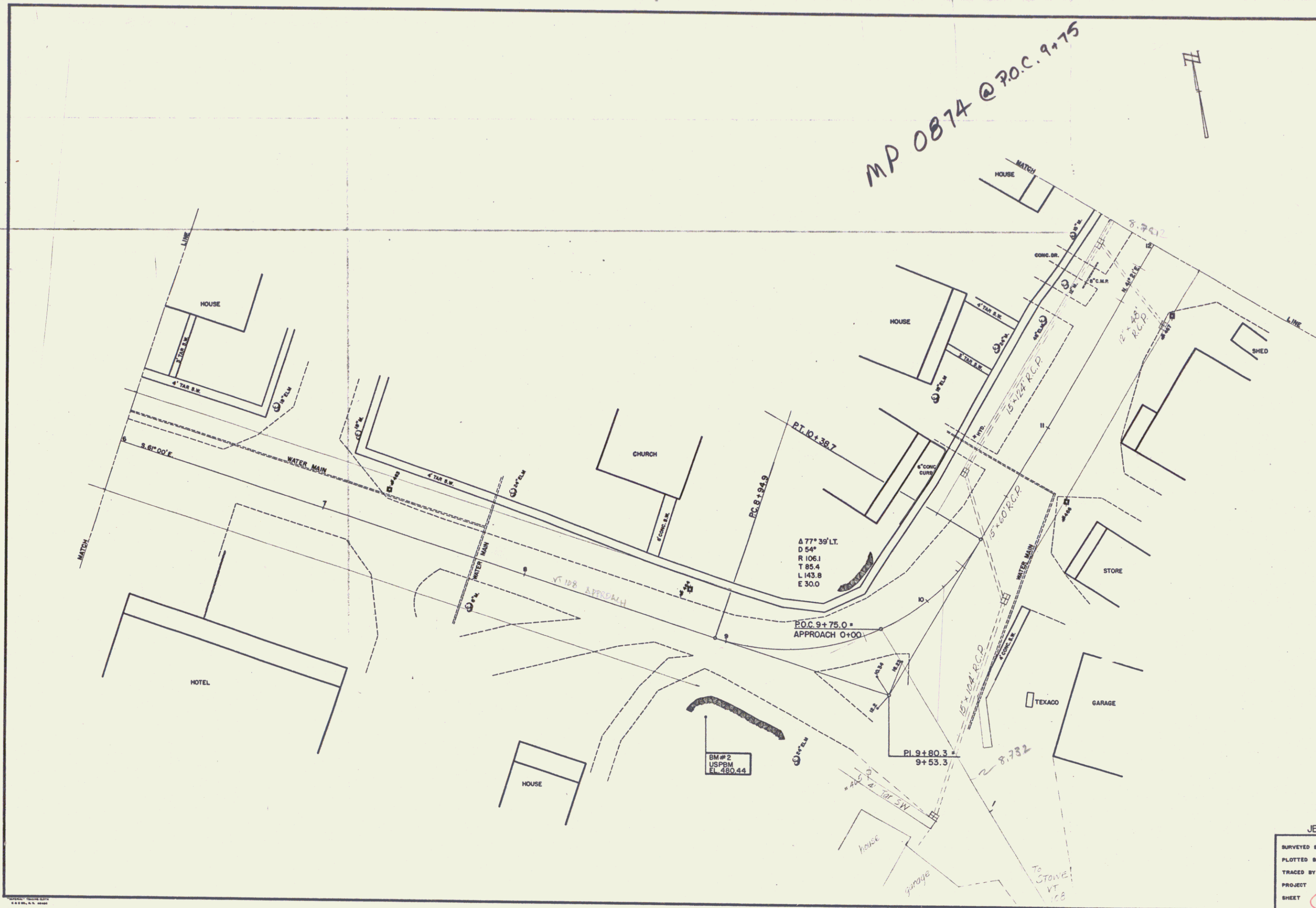


MP 0874 @ P.O.C. 9+75



BM #2  
USPBM  
EL. 480.44

$\Delta 77^\circ 30' \text{ L.T.}$   
 $D 54'$   
 $R 106.1$   
 $T 85.4$   
 $L 143.8$   
 $E 30.0$

P.O.C. 9+75.0  
APPROACH 0+00

PI 9+80.3  
9+53.3

CAMBRIDGE  
JEFFERSONVILLE VILLAGE

SURVEYED BY:	SPAULDING	5/53
PLOTTED BY:	S.R.	7/53
TRACED BY:	J.R.	7/53
PROJECT		NO.
SHEET	2	OF

2