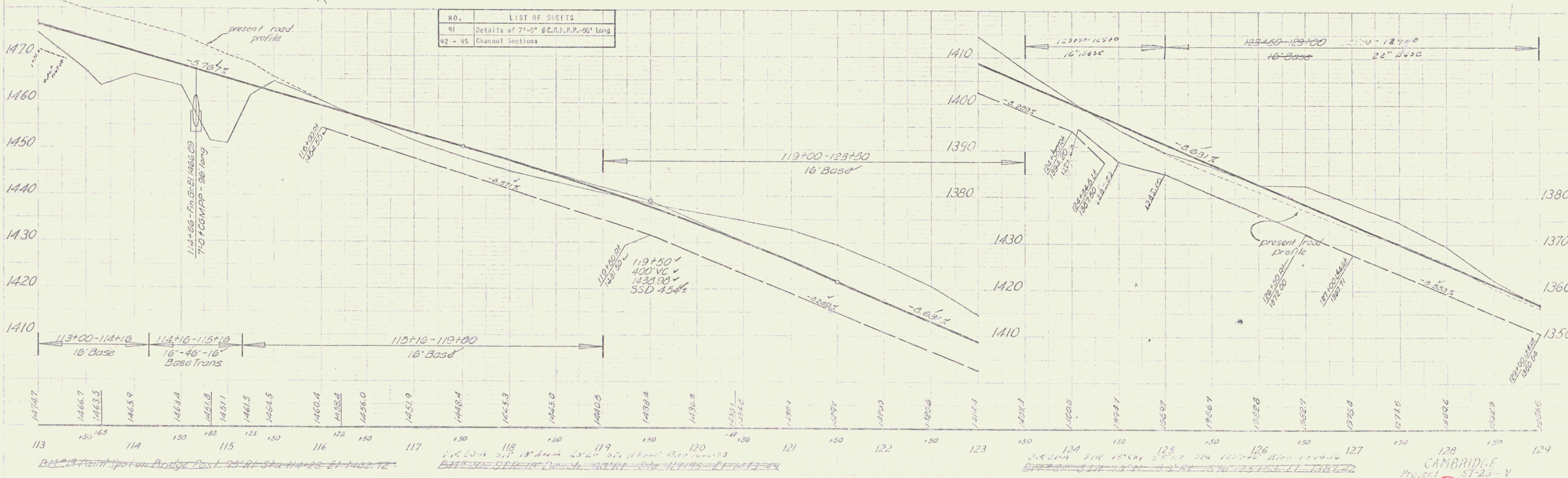


**BRIDGE DATA**  
 Overall Length 12'-0"  
 Roadway 25'-0"  
 Clear Span Inlet 7'-3"  
 Outlet 7'-0"  
 Clear Height 6'-0"

NO.	SUMMARY OF PLATE PIPE QUANTITIES	UNIT	AMOUNT
166-M	Channel Excavation of 14" (incl. 10% overrun)	c.y.	33
166-S	Channel Excavation of 30" (incl. 10% overrun)	c.y.	177
167	Structure Excavation (incl. 10% overrun)	c.y.	177
222	Gravel Backfill	c.y.	124
429-3	7'-0" @ C.G.M.P.P.-96' long (22,050 #)	l.s.	1
442	Removal of Present Superstructure	l.s.	1
526	Riprap for Bank Protection (incl. 10% overrun)	c.y.	97

NO.	LIST OF SHEETS
41	Details of 7'-0" @ C.G.M.P.P.-96' Long
42 - 45	Channel Sections



CAMBRIDGE  
 Project ST-25-V  
 Sheet 12 of 46