

NO.	SUMMARY OF PLATE PIPE QUANTITIES	UNIT	AMOUNT
104	Borrow (fill for old channels) (incl. 10% overrun)	c.y.	1414
106-B	Channel Excavation of Rock (incl. 10% overrun)	c.y.	785
107	Structural Excavation (incl. 10% overrun)	c.y.	960
222	Gravel Backfill	c.y.	500
NQ1-B	Concrete Slab "B" (incl. 5% overrun)	c.y.	12
302	Reinforcing Steel	lbs.	295
420-A	1 1/2" Cor. Galv. Hot. Plate Pipe (198,412 #)	l.s.	1
522	Stone Fills for Slope Protection (incl. 10% overrun)	c.y.	224
526	Risep for Bank Protection (incl. 10% overrun)	c.y.	89
521-A	6" Perf. Jash. Ctd. Cor. Galv. Metal Underdrain	l.f.	100

NO.	LIST OF SHEETS
16	Plan
17	Profile
34	Details of 1 1/2" C.G.H.P.P.
35 - 40	Channel Sections

Sta. 90+00 to 91+00
 30' x 18" T&P
 8' x 18" G&P

THREE CABLE GUARD RAIL
 WITH STEEL POSTS
 Sta. 91+00 to 92+00
 30' x 18" T&P
 8' x 18" G&P

CONSTRUCT DRIVE
 Sta. 94+70 to 95+00
 30' x 18" T&P
 8' x 18" G&P

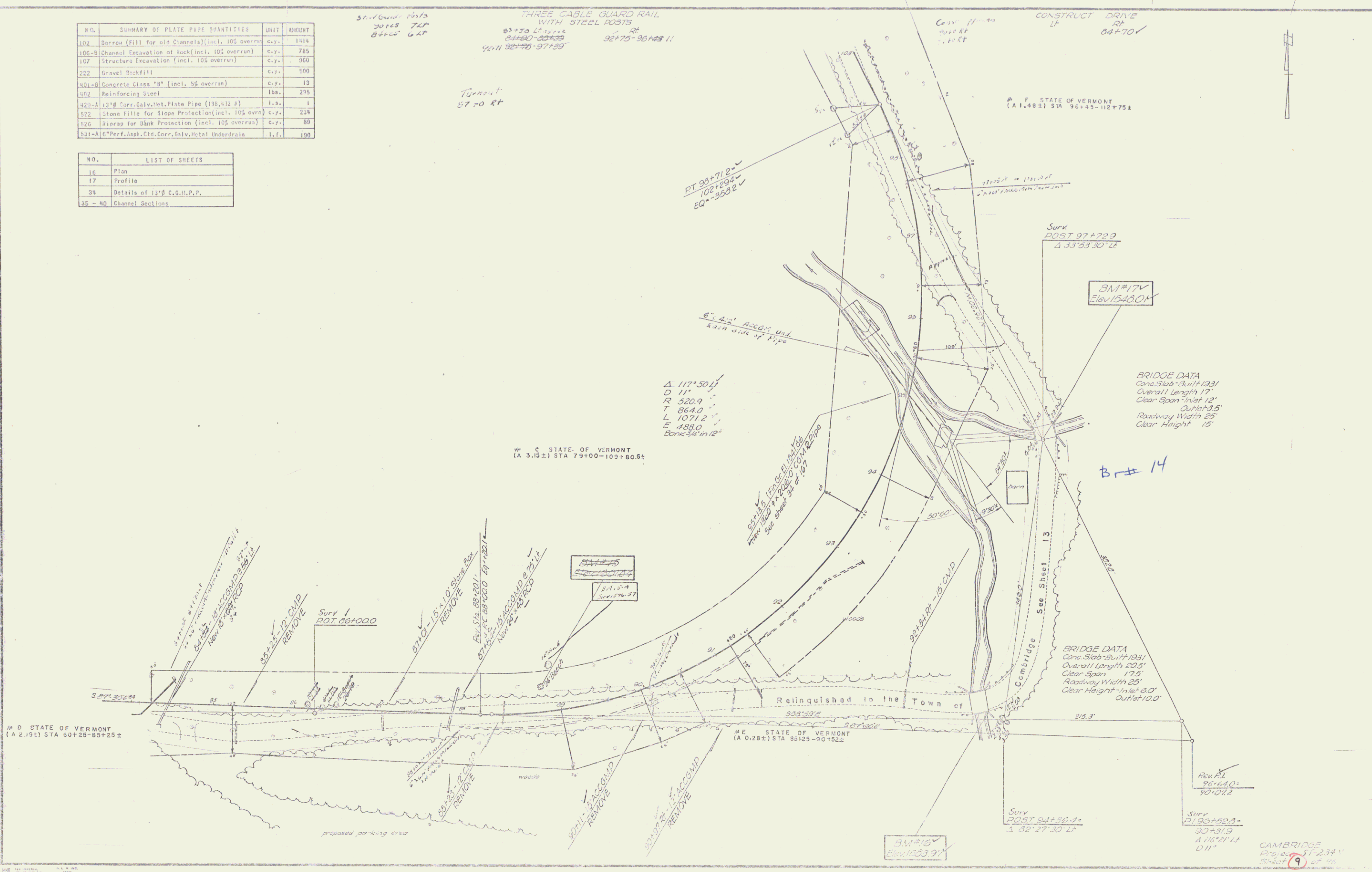
Toward
 87-0 RT

F. STATE OF VERMONT
 (A 1.482) STA 96+45-112+75±

C STATE OF VERMONT
 (A 3.15±) STA 79+00-103+80.5±

D STATE OF VERMONT
 (A 2.19±) STA 60+25-85+25±

E STATE OF VERMONT
 (A 0.28±) STA 84+25-90+52±



CAMBRIDGE
 Project #1234
 Sheet 6 of 46