

**INDEX OF SHEETS**

SHEET #1	TITLE SHEET
SHEET #2	TYPICAL CROSS-SECTION OF IMPROVEMENT WITH CRUSHED PEA STONE, ITEM 314-B, MOD.
SHEET #3	QUANTITY SHEET (ITEMS)
SHEET #4	QUANTITY SHEET (DRAINAGE)
SHEET #5	EARTHWORK SHEETS
SHEET #6	STANDARD SHEET B-1 (BANKING TABLES)
SHEET #7	STANDARD SHEET D-1 (PRECAST R.C.P. DROP INLETS ETC.)
SHEET #8	STANDARD SHEET D-2 (C.R.M. HEADWALLS)
SHEET #9	STANDARD SHEET D-4 (SPECIAL ACCOMP. ELBOWS)
SHEET #10	STANDARD SHEET D-16 (PRECAST R.C. CURB DROP INLETS)
SHEET #11	STANDARD SHEET E-1 (BARRICADES, SIGNS & LIGHTS)
SHEET #12	STANDARD SHEET E-9 (FEDERAL AID SIGNS)
SHEET #13	STANDARD SHEET G-2a (TWO CABLE GUARD RAIL)
SHEET #14	STANDARD SHEET G-2b (2 C.G.R. DEAD END ANCHORAGE)
SHEET #15	STANDARD SHEET G-4 (GUIDE POSTS & MARKER POSTS)
SHEET #16	STANDARD SHEET J-1 (PROJECT MARKERS)
SHEET #17	PLAN AND PROFILE SHEETS
SHEET #18-21	CROSS-SECTION SHEETS
SHEET #22	BANKING TRANSITIONAL DIAGRAMS

PROJECT NAME & NUMBER CAMBRIDGE S 0235 (2)	TYPE PAVEMENT SINGLE TACK COAT OF CUTBACK ASPHALT WITH CRUSHED PEA STONE (MOD.)	AREA 11,647sq.
<b>RECORD PLANS</b>		
<b>MATERIALS</b>		
SUBBASE GRAVEL FINE GRADED	MASHUA PIT, JEFFERSONVILLE, VT.	
CUTBACK ASPHALT ITEM 314-B	MORIL OIL CO. E. PROVIDENCE, RI.	
REINFORCED CONCRETE PIPE	S.T. GRISWOLD CO. INC., ESSEX JCT. VT.	
A.C.C.M.C. PIPE		
PRECAST REINFORCED CONCRETE DROP INLETS		
TWO CABLE GUARD RAIL		
WOOD GUARDRAIL POSTS		
TREATED TIMBER CURB		
CONTRACTOR: E. O. MORIN	CONTRACT DATED: MAY 17, 1963	
RESIDENT ENGINEER: S. C. MURRAY	CONTRACT STARTED: MAY 23, 1963	
INSPECTOR: R. EDWARDS	CONTRACT COMPLETED: SEPT. 25, 1963	
RECORD PLANS: S. C. MURRAY	CONTRACT ACCEPTED: SEPT. 25, 1963	

NOTE: BENCH MARK DATA ARE BASED ON U.S.G.S. ELEVATIONS.

**STATE OF VERMONT  
DEPARTMENT OF HIGHWAYS**

**PROPOSED IMPROVEMENT**

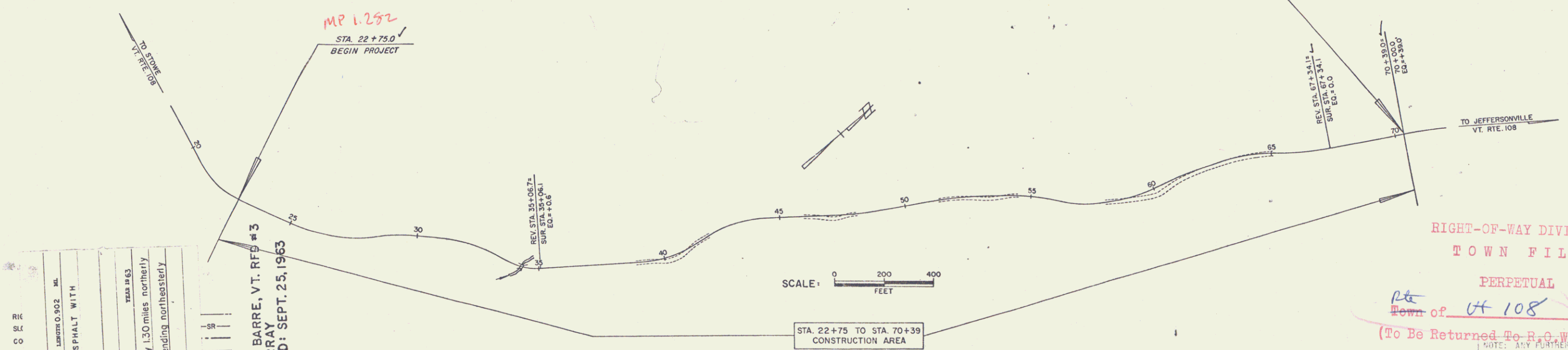
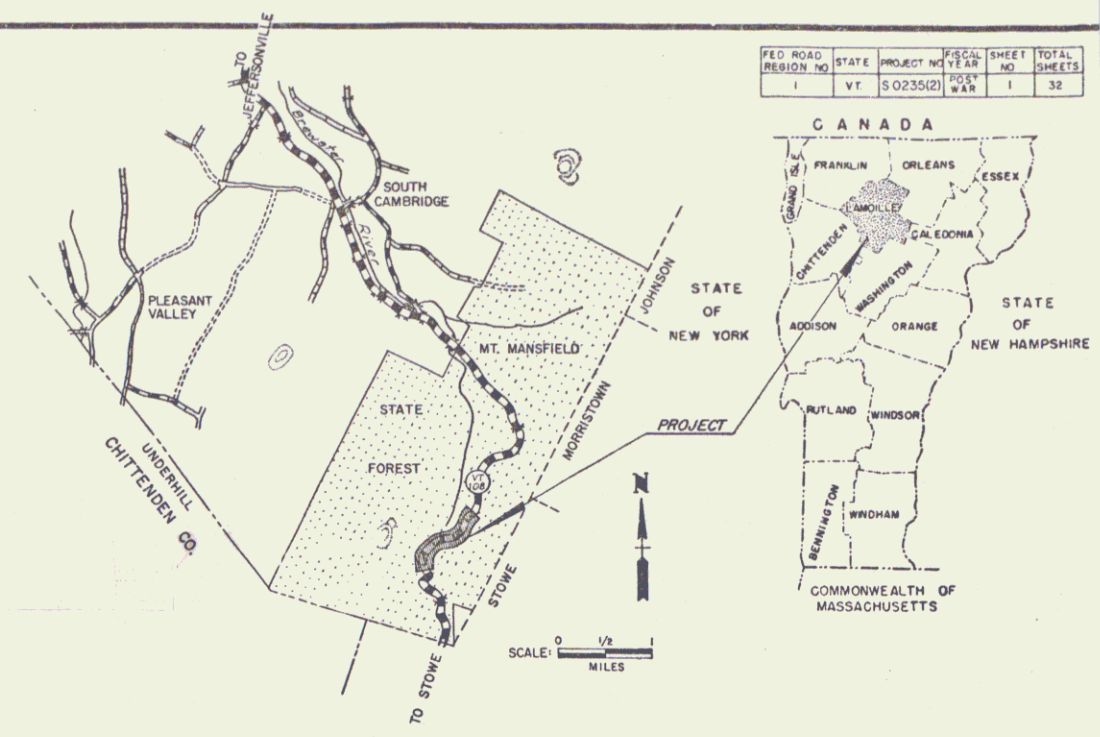
FEDERAL AID SECONDARY PROJECT

**TOWN OF CAMBRIDGE  
COUNTY OF LAMOILLE  
VERMONT ROUTE 108  
STOWE - JEFFERSONVILLE ROAD**

Beginning at a point approximately one and three tenths miles northerly of the Stowe-Cambridge town line and extending northeasterly 0.902 of a mile.

LENGTH OF PROJECT: 4764.6 FEET = 0.902 MILE

<b>DESIGN DATA</b>	
1960 ADT = 140	
1980 ADT = 200	
1980 DHV = 45	
D = 71	
T = 4	
V = 30	



SCALE: 0 200 400 FEET

STA. 22+75 TO STA. 70+39 CONSTRUCTION AREA

RIGHT-OF-WAY DIVISION  
TOWN FILE  
PERPETUAL  
Town of Cambridge  
(To Be Returned To R.O.W. Division)

PROJECT: CAMBRIDGE  
LENGTH: 0.902 MI.  
TYPE: SINGLE TACK COAT OF CUTBACK ASPHALT WITH CRUSHED PEA STONE (MOD.)  
CONTRACTOR: E. O. MORIN  
LOCATION: Beginning at a point approximately 1.30 miles northerly of the Stowe-Cambridge Town Line and extending northeasterly 0.902 mile.

**CURVE DATA**

DEFLECTION OF ANGLE	A
DEGREE OF CURVE	D
RADIUS OF CURVE	R
TANGENT DISTANCE	T
LENGTH OF CURVE	L
EXTERNAL DISTANCE	E
POINT OF INTERSECTION	P.I.
POINT OF CURVE	P.C.
POINT OF TANGENT	P.T.
POINT ON TANGENT	P.O.T.
POINT ON SUB-TANGENT	P.O.S.T.

APPROVED: <i>[Signature]</i> DATE: 4/5/63	APPROVED: <i>[Signature]</i> DATE: 4/16/63	APPROVED: <i>[Signature]</i> DATE: 4/18/63	APPROVED: <i>[Signature]</i> DATE: 4/15/63	APPROVED: <i>[Signature]</i> DATE: 4/15/63	APPROVED: <i>[Signature]</i> DATE: 4/15/63
--	---	---	---	---	---

THESE PLANS ARE SUBJECT TO SUCH REVISIONS AS MAY BE REQUIRED BY THE BUREAU OF PUBLIC ROADS OR THE COMMISSIONER OF HIGHWAYS.

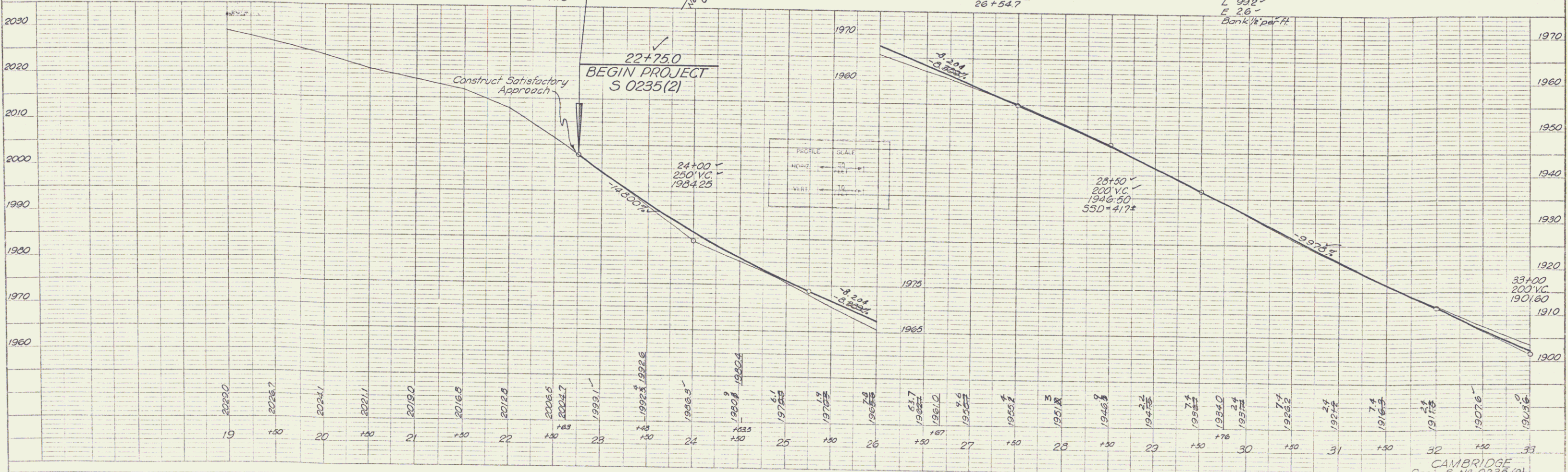
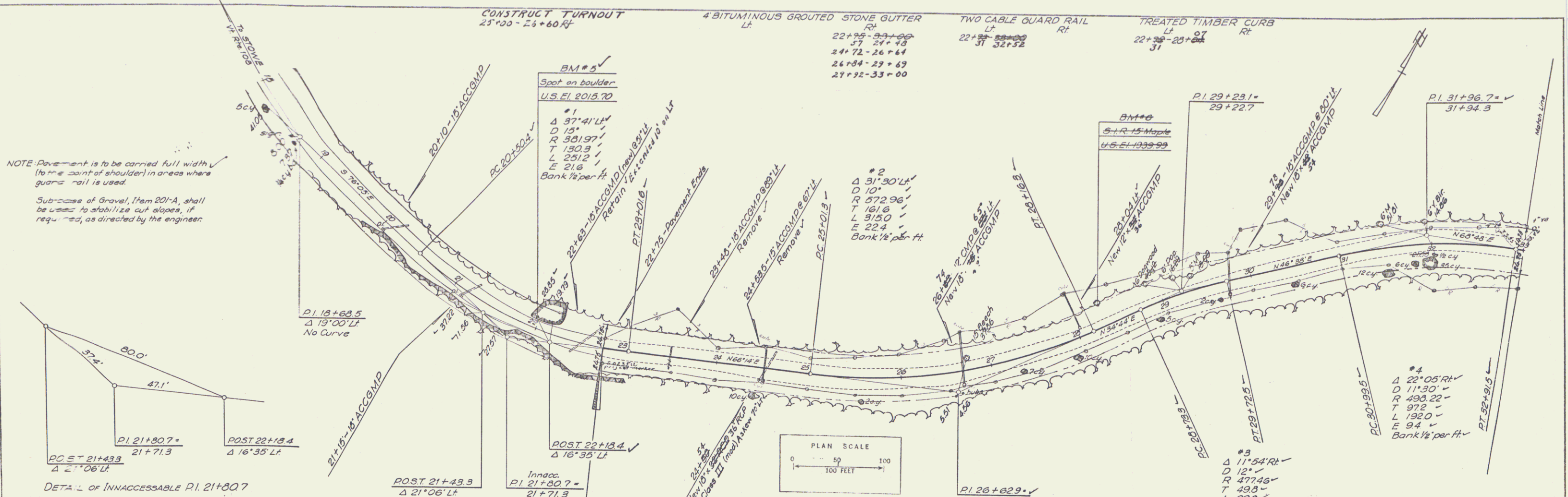
CONSTRUCTION IS TO BE CARRIED ON IN ACCORDANCE WITH THE PLANS AND THE STANDARD SPECIFICATIONS FOR HIGHWAY AND BRIDGE CONSTRUCTION OF JANUARY 1956 SUBMITTED TO THE BUREAU OF PUBLIC ROADS AS APPROVED JULY 5, 1956, INCLUDING ALL SUBSEQUENT APPROVED REVISIONS AND SUCH REVISED SPECIFICATIONS AND SPECIAL PROVISIONS AS ARE SUBMITTED WITH THE PLANS.

NOTE: ANY FURTHER INFORMATION CONCERNING FINAL QUANTITIES, AMOUNTS OR OTHER DETAILS RELATIVE TO THIS PROJECT MAY BE FOUND IN EITHER THE FIELD BOOKS OR THE ESTIMATE FILE.

DEPARTMENT OF COMMERCE BUREAU OF PUBLIC ROADS	
Pin #00R036	
APPROVED	DATE
DIVISION ENGINEER	DATE
PROJECT S NO. 0235(2)	
SHEET 1 OF 32 SHEETS	

PLAN  
 DATE: 10/25/66  
 DRAWN BY: [illegible]  
 CHECKED BY: [illegible]  
 NO. 1

NOTE: Pavement is to be carried full width (to the point of shoulder) in areas where guard rail is used.  
 Subbase of Gravel, Item 201-A, shall be used to stabilize cut slopes, if required, as directed by the engineer.



PROFILE  
 DATE: 10/25/66  
 DRAWN BY: [illegible]  
 CHECKED BY: [illegible]  
 NO. 2



PLAN  
 DATE: 10-28-88  
 DRAWN BY: [illegible]  
 CHECKED BY: [illegible]

PROFILE  
 DATE: 10-28-88  
 DRAWN BY: [illegible]  
 CHECKED BY: [illegible]

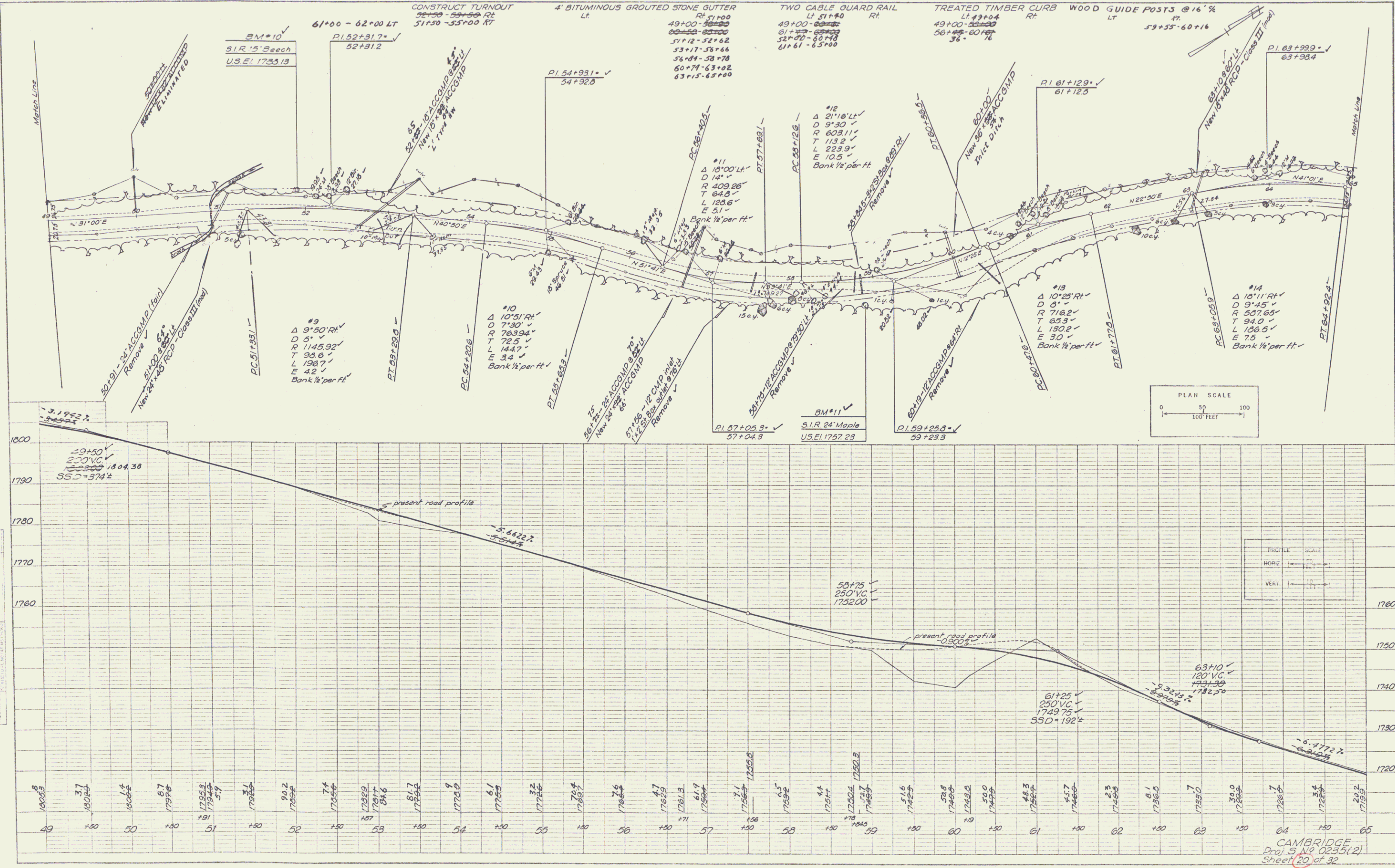


PLATE 1 - PLAN, PROFILE, & P & R, STANDARD  
 REVISIONS & EDITIONS - NEW YORK  
 4 1/2" x 6" 100 346-10

CAMBRIDGE  
 Proj. 5 No. 0235(2)  
 Sheet 20 of 32

4

