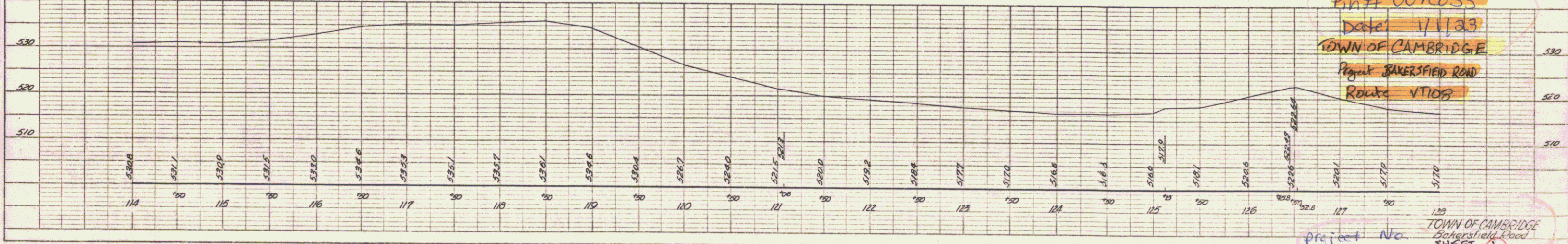
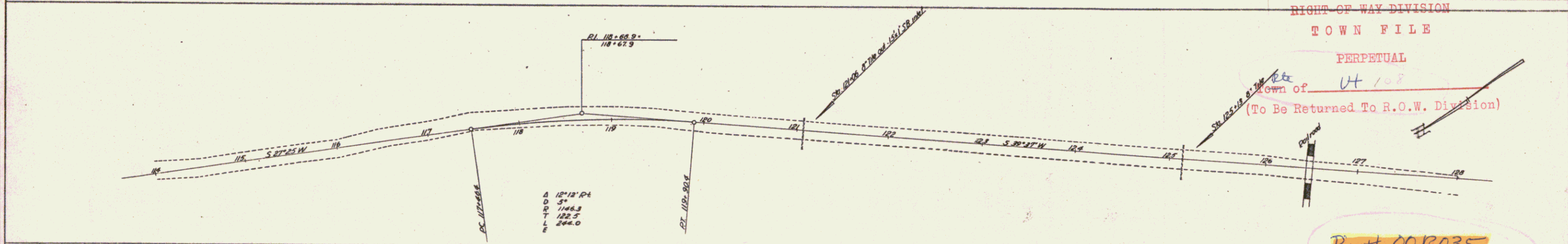
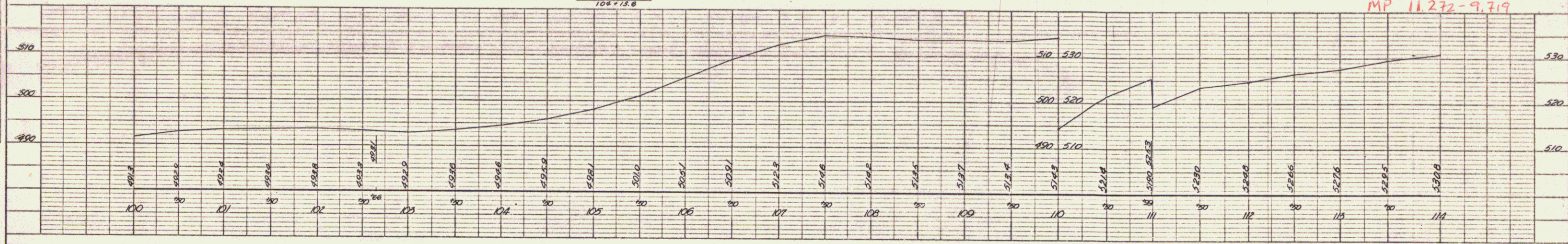
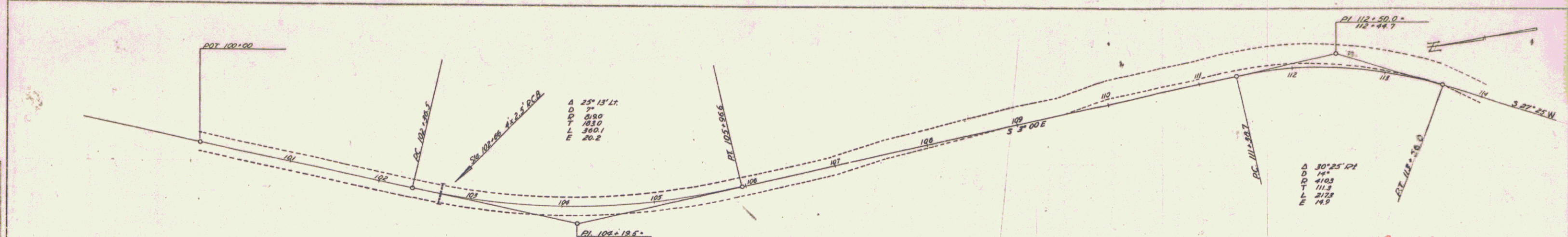


DATE: 1/11/23
 BY: Dudley
 CHECKED: A.J.E.
 PLAN NO. 1123

DATE: 1/11/23
 BY: Dudley
 CHECKED: A.J.E.
 PROFILE NO. 1123



RIGHT OF WAY DIVISION
 TOWN FILE
 PERPETUAL
 Town of UT 108
 (To Be Returned To R.O.W. Division)

Pin# 00R035
 Date: 1/11/23
 TOWN OF CAMBRIDGE
 Project BAKERSFIELD ROAD
 Route VT108

Project No. 1123
 TOWN OF CAMBRIDGE
 Bakersfield Road
 SHEET 1

DATE: 5-29-59
 DRAWN BY: J. J. [unclear]
 CHECKED BY: [unclear]
 SCALE: 1" = 40'

DATE: 5-29-59
 DRAWN BY: J. J. [unclear]
 CHECKED BY: [unclear]
 SCALE: 1" = 40'

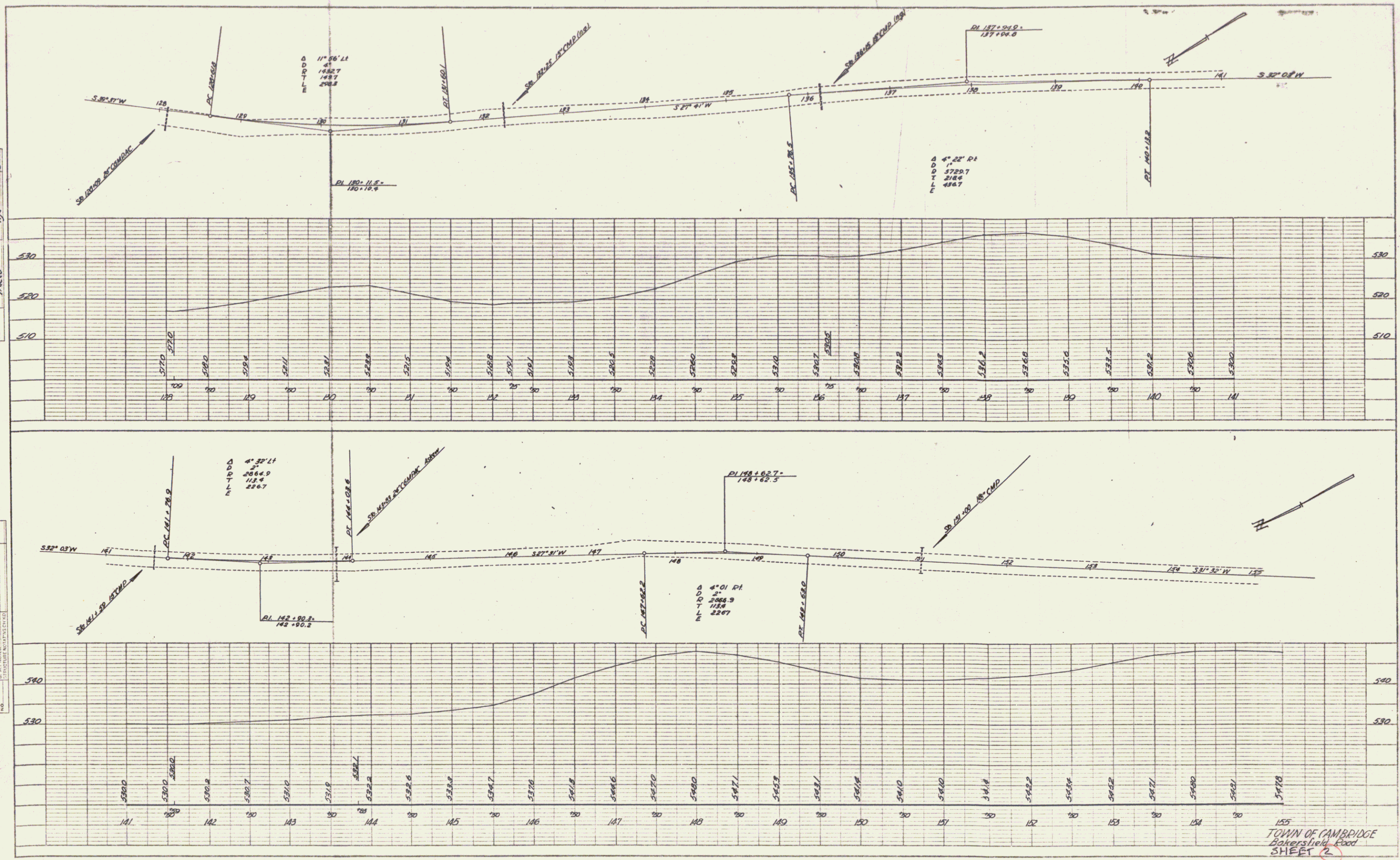
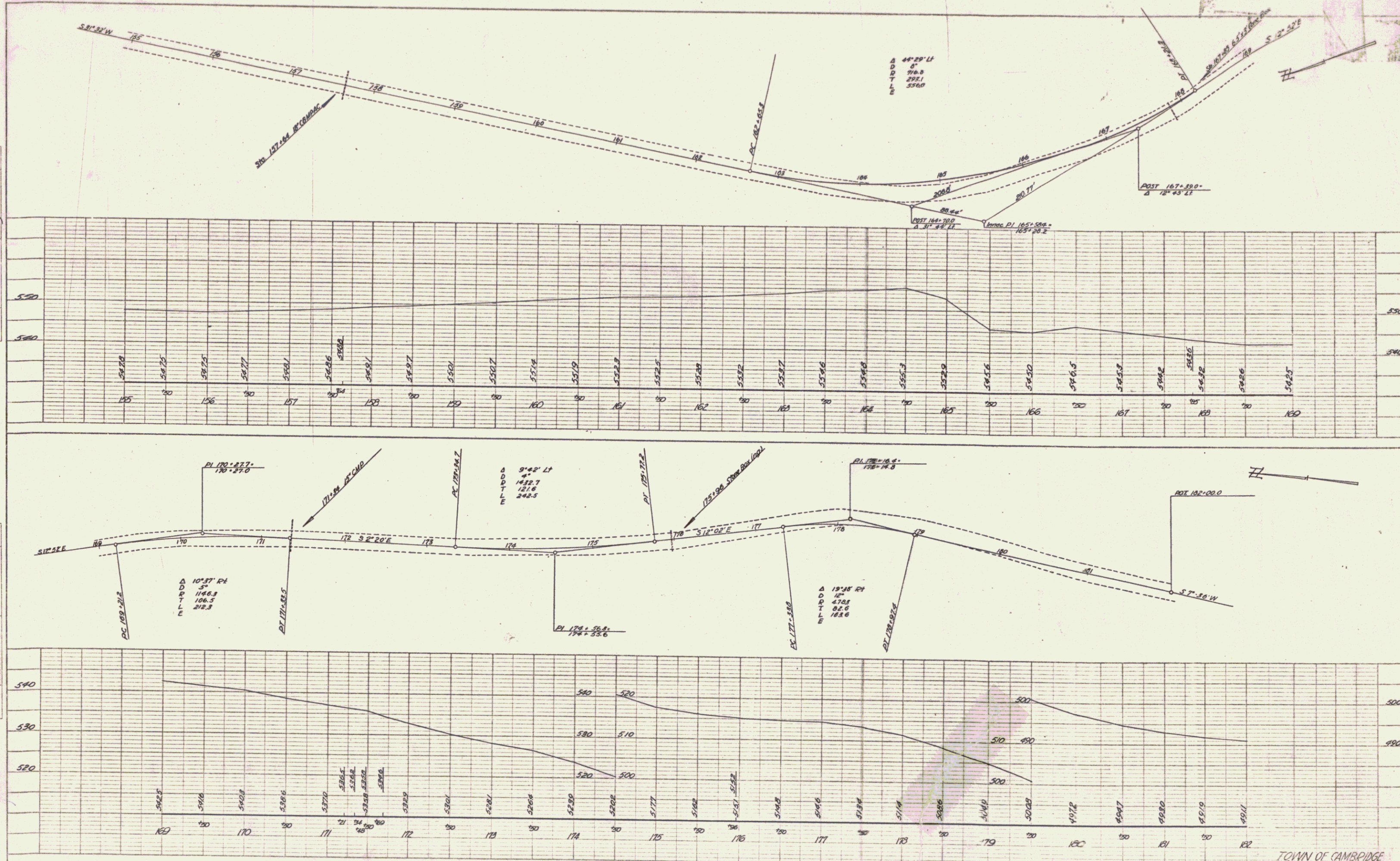


PLATE 2 PLAN PROFILE OF BAKER'S ROAD
 TOWN OF CAMBRIDGE
 SHEET 2

155
 TOWN OF CAMBRIDGE
 Baker's Road
 SHEET 2

DATE: 5-49
 DRAWN BY: D. J. O'NEILL
 CHECKED BY: D. J. O'NEILL
 PLAN NO.: 5-49

DATE: 6-49
 DRAWN BY: D. J. O'NEILL
 CHECKED BY: D. J. O'NEILL
 PROFILE NO.: 5-49



TOWN OF CAMBRIDGE
 Davenport Road
 SHEET 3