

INDEX OF SHEETS

SHEET NO. 1	TITLE PAGE
2	TYPICAL CROSS-SECTION OF IMPROVEMENT (2 1/2" Crushed Gravel M.P. Surface Course, With Refined Tar, Item 25 & Item 30)
3	BANKING AND WIDENING TABLES
4-9	PLAN AND PROFILE
10	STANDARD STRUCTURE SHEET 3-28 PIPE CULVERTS
11	" " " 3-30 GUARD RAIL
12	" " " 3-30-A STD UNDERDRAIN, F.A. MARKERS, BOUND MARKERS
13	" " " 3-40 BARRICADES, SIGNS, LIGHTS
14	" " " 3-41 ROUNDING OF SLOPES
15	" " " 3C-24 BARREL FOR 313'
16	" " " 3C-2-3 WINGS FOR 313'
17-18	ABUT DETAIL BRIDGE
19	CI 24-5 SUPERSTRUCT DETAILS, ONE SPAN 94 FT. SQUARE BRIDGE
20	3B-20 DETAILS ACQU.
21	3B-11 BARRICADES, SIGNS, LIGHTS, (BRIDGE)
22-46	CROSS SECTION SHEETS

Standard Structure Sheets
Approved by the Chief
Engineer.
3-28 July 11, 1933
3-30 Aug 13, 1934

STATE OF VERMONT
STATE HIGHWAY DEPARTMENT

PLAN AND PROFILE OF PROPOSED
STATE HIGHWAY

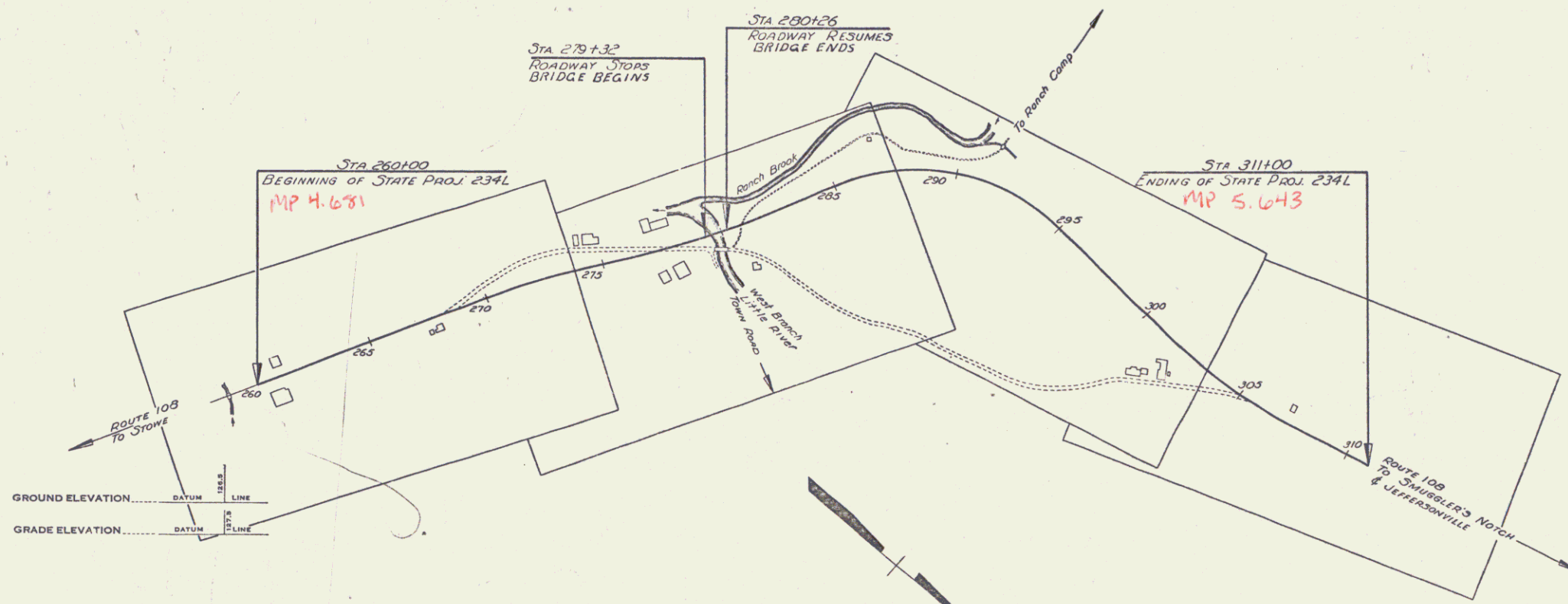
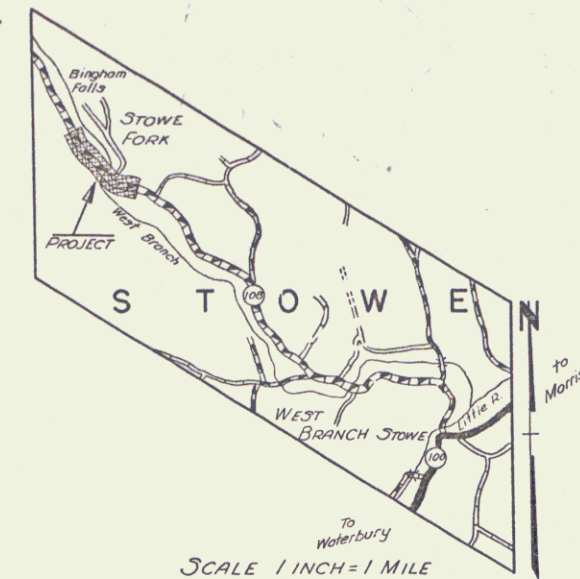
TOWN OF STOWE
VERMONT ROUTE 108

STOWE-CAMBRIDGE ROAD

BEGINNING AT A POINT 4.9 MILES NORTHWESTERLY OF THE INTERSECTION OF VERMONT ROUTES 100 AND 108 AND EXTENDING NORTHWESTERLY 0.963 MILES

LENGTH OF ROADWAY 4993.7 FEET = 0.945 MILES
LENGTH OF BRIDGE 94.0 FEET = 0.017 MILES
LENGTH OF PROJECT 5087.7 FEET = 0.963 MILES

FED. ROAD DIST. NO.	STATE	STATE PROJ. NO.	FISCAL YEAR	SHEET NO.	TOTAL SHEETS
9	VT.	234-L	1941	1	46



COUNTY LINE
TOWN LINE
FENCE LINE
STONE WALL
UNFENCED PROPERTY
GUARD RAIL
TRAVELED WAY
RAILROAD
RETAINING WALL
CENTER LINE
SURVEY LINE
CULVERT
DROP INLET
TROLLEY POLE
POWER POLE
TELEPHONE POLE
TREES
HEDGE

CURVE DATA

DEFLECTION ANGLE
DEGREE OF CURVE
RADIUS OF CURVE
TANGENT DISTANCE
LENGTH OF CURVE
EXTERNAL DISTANCE
POINT OF INTERSECTION
POINT OF CURVE
POINT OF TANGENT
POINT ON TANGENT

SCALES

TITLE	1" = 300'
TYPICAL	1" = 2'
PLAN	1" = 30'
PROFILE HORIZONTAL	1" = 10'
VERTICAL	1" = 5'
CROSS SECTIONS	1" = 5'

THESE PLANS ARE SUBJECT TO SUCH REVISIONS AS MAY BE REQUIRED BY THE PUBLIC ROADS ADMINISTRATION OR THE COMMISSIONER OF HIGHWAYS.

CONSTRUCTION IS TO BE CARRIED ON IN ACCORDANCE WITH THE PLANS AND THE STANDARD ROAD AND BRIDGE SPECIFICATIONS OF 1936, AS APPROVED DECEMBER 29TH, 1936 BY THE PUBLIC ROADS ADMINISTRATION, INCLUDING ALL SUBSEQUENT APPROVED REVISIONS AND SUCH REVISED SPECIFICATIONS AND SPECIAL PROVISIONS AS ARE SUBMITTED WITH THE PLANS.

RIGHT-OF-WAY DIVISION
TOWN FILE
PERPETUAL
Town of Stowe
(To Be Returned To R.O.W. Division)

APPROVED: *H. Sargent*
COMMISSIONER OF HIGHWAYS
SUBMITTED BY ORDER OF THE STATE HIGHWAY BOARD

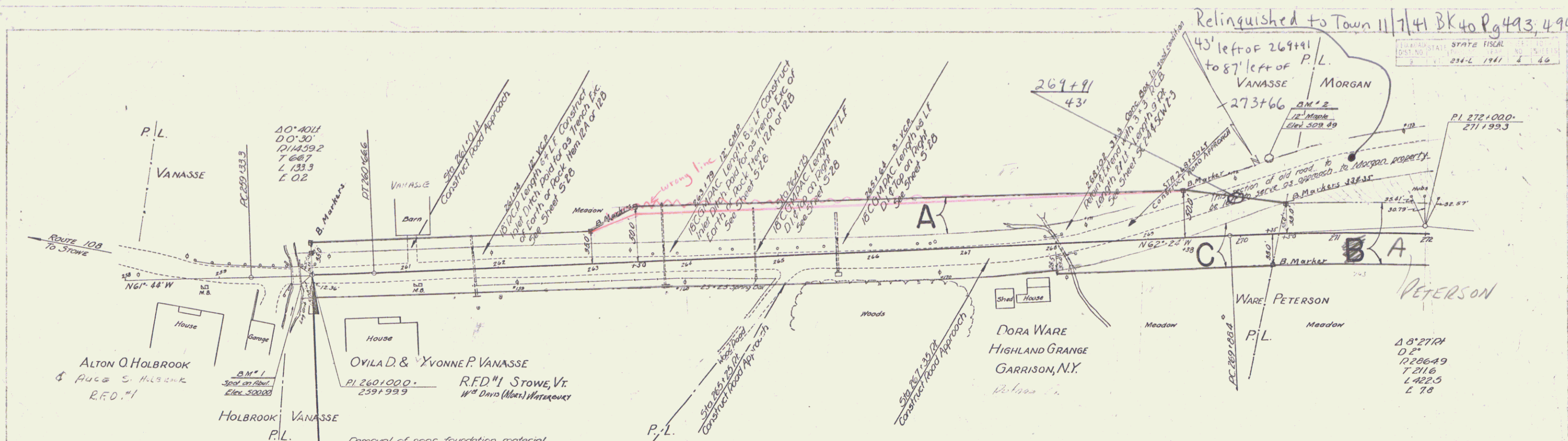
Pin # 00R033

Date 4/25/1941

RECOMMENDED FOR APPROVAL
DISTRICT ENGINEER
PUBLIC ROADS ADMINISTRATION
FEDERAL WORKS AGENCY

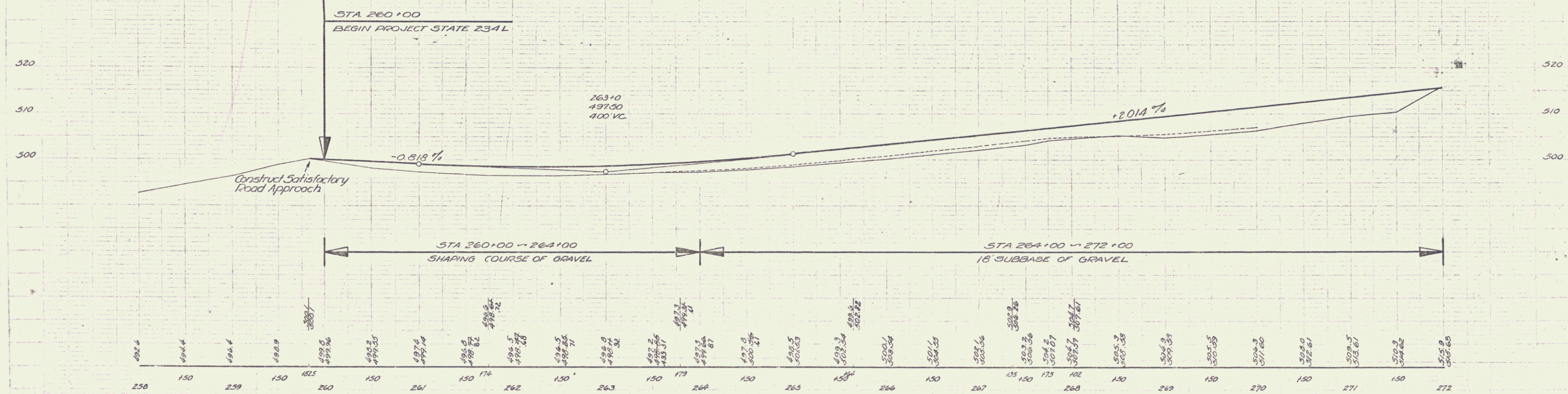
APPROVED
DISTRICT ENGINEER
PUBLIC ROADS ADMINISTRATION
FEDERAL WORKS AGENCY

APPROVED: *John L. ...* ROAD ENGINEER
APPROVED: *W. W. Manset* DISTRICT HIGHWAY COMMISSIONER
Project ST 234-L
SERIES State NO. 234-L FILED
SHEET 1 OF 46



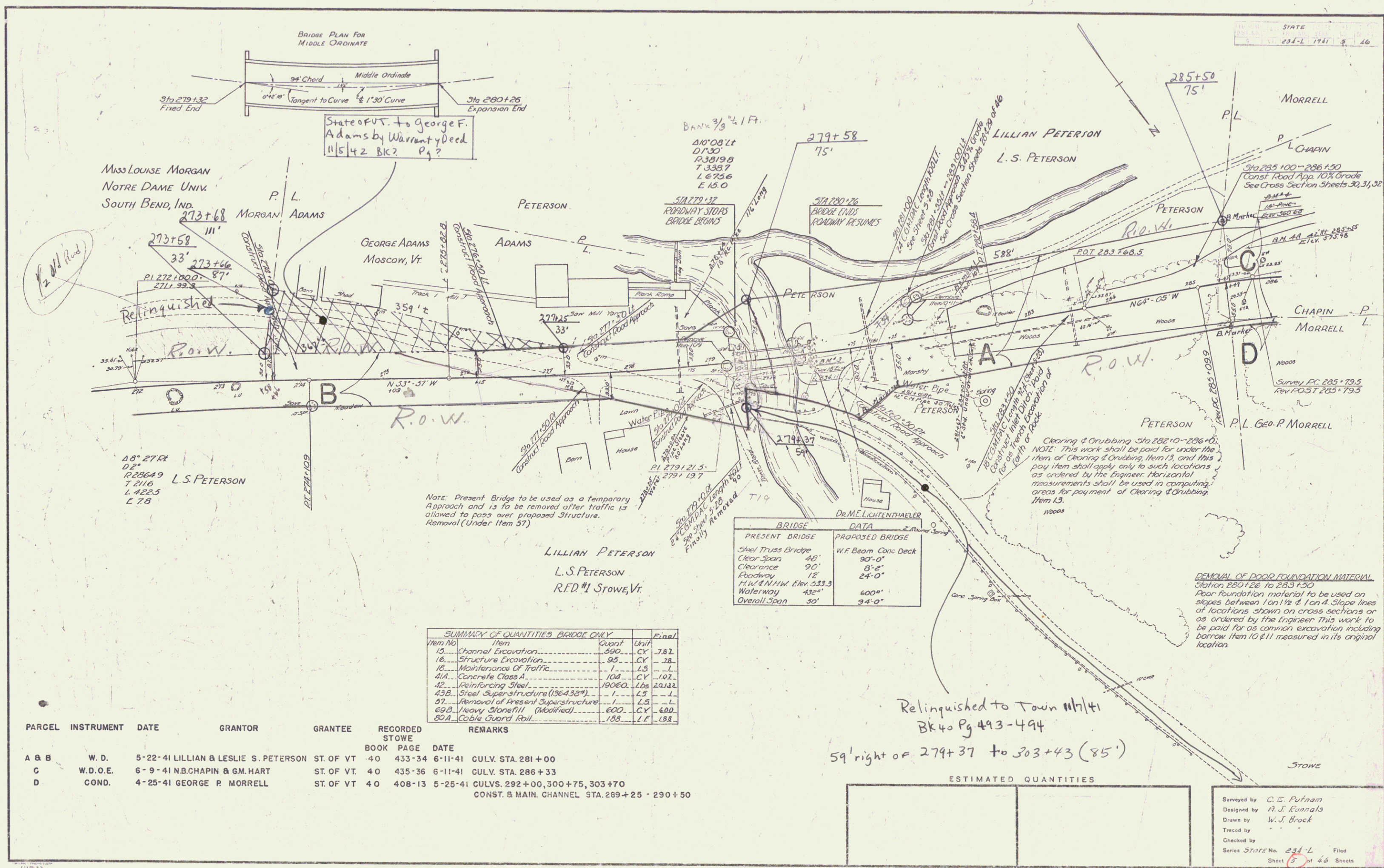
Removal of poor foundation material
 Station 261+25 to Station 264+00 Right
 - 261+25 - 267+00 Left
 - 270+25 - 274+00 Left & Right
 Poor foundation material to be used on slopes between
 1 on 1 1/2 & 1 on 4 Slope lines of locations shown on cross
 sections or as ordered by the Engineer. This work to be paid
 for as common excavation including borrow item 10-1,
 measured in its original location.

PARCEL	INSTRUMENT	DATE	GRANTOR	GRANTEE	RECORDED BOOK	STOWE PAGE	DATE	REMARKS
A	W.D.O.E.	6/9/41	OVILA & YVONNE VANASSE	ST. OF VT.	40	438-439	6-11-41	
C	COND.	4/25/41	MRS. DORA WARE	ST. OF VT.	40	408-413	4-25-41	



B.M. #1 SPOT ON CONG. BRIDGE, 14' BT OF STA 259+90 ELEV 500.00
 B.M. #2 SPIKE IN TRUNK OF 12" MAPLE 78' LT OF STA 270+35 ELEV 509.49

STOWE
 SERIES STATE NO 234-L
 SHEET 4 OF 46



State of VT. to George F. Adams by Warranty Deed 11542 BK? Pg?

MISS LOUISE MORGAN
NOTRE DAME UNIV.
SOUTH BEND, IND.

PETERSON

GEORGE ADAMS
Moscow, Vt.

LILLIAN PETERSON
L.S. PETERSON

MORRELL

P.L. CHAPIN

CHAPIN P.L.

MORRELL P.L.

P.L. Geo. P. MORRELL

18° 27' RA
0.2°
R23649
T 2116
L 4225
E 78
L.S. PETERSON

Note: Present Bridge to be used as a temporary Approach and is to be removed after traffic is allowed to pass over proposed Structure. Removal (Under Item 57)

LILLIAN PETERSON
L.S. PETERSON
R.F.D. #1 Stowe, Vt.

BRIDGE DATA	
PRESENT BRIDGE	PROPOSED BRIDGE
Steel Truss Bridge	W.F. Beam Conc Deck
Clear Span 88'	90'-0"
Clearance 90'	8'-2"
Roadway 12'	24'-0"
H.W. & N.H.W. Elev 533.3	
Waterway 432'	600'
Overall Span 50'	94'-0"

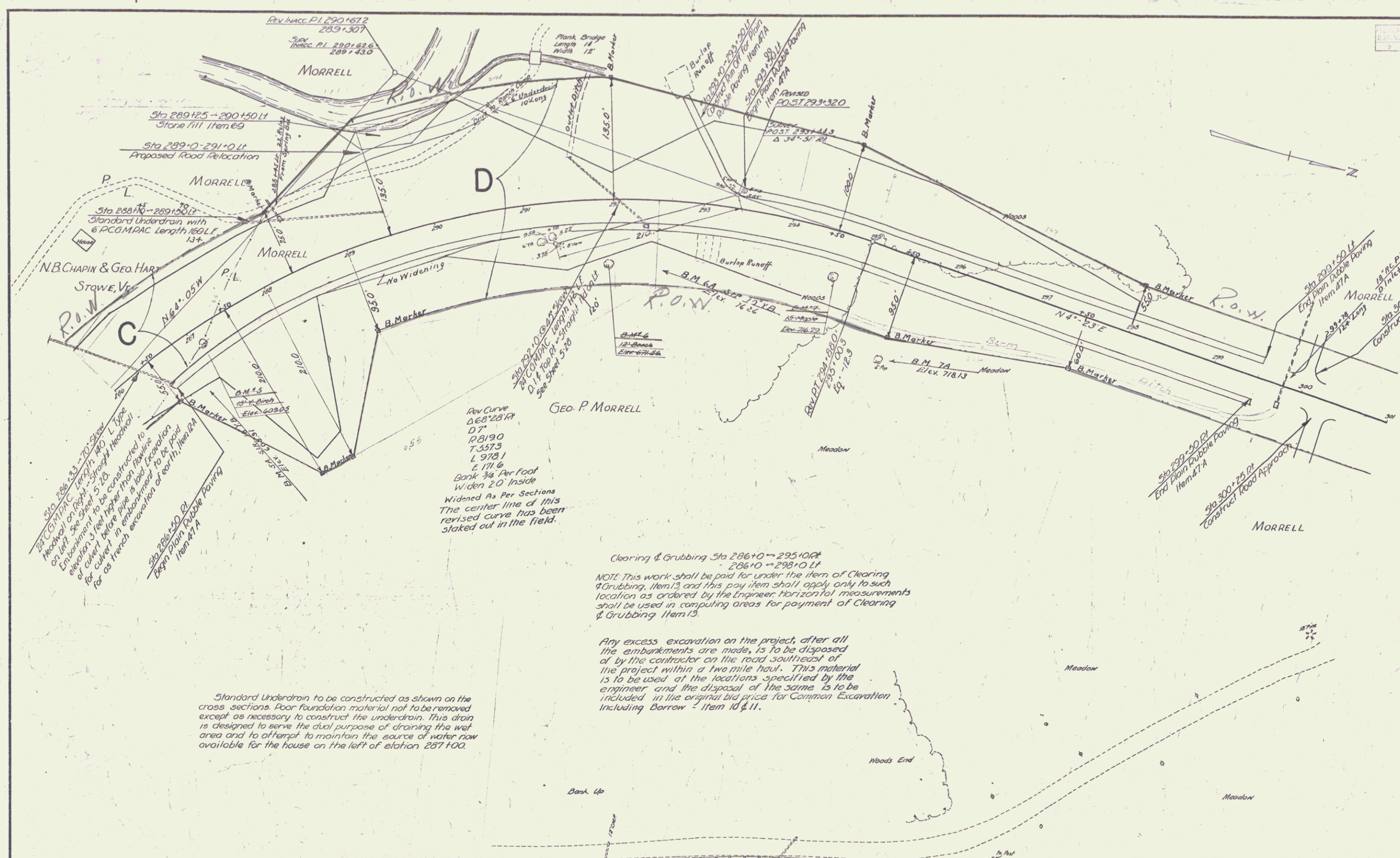
SUMMARY OF QUANTITIES BRIDGE ONLY				Final
Item No.	Item	Quant	Unit	
10	Channel Excavation	990	CY	78.2
16	Structure Excavation	95	CY	28.
18	Maintenance Of Traffic	1	LS	L
41A	Concrete Class A	104	CY	102.
42	Reinforcing Steel	19060	Lbs	20132
43B	Steel Superstructure (136' x 38")	1	LS	L
57	Removal of Present Superstructure	1	LS	L
69B	Heavy Stonefill (Modified)	600	CY	600.
80A	Cable Guard Rail	188	LF	188.

PARCEL	INSTRUMENT	DATE	GRANTOR	GRANTEE	RECORDED STOWE	BOOK	PAGE	DATE	REMARKS
A & B	W.D.	5-22-41	LILLIAN & LESLIE S. PETERSON	ST. OF VT.	40	433-34	6-11-41		CULV. STA. 281+00
C	W.D.O.E.	6-9-41	N.B. CHAPIN & G.M. HART	ST. OF VT.	40	435-36	6-11-41		CULV. STA. 286+33
D	COND.	4-25-41	GEORGE P. MORRELL	ST. OF VT.	40	408-13	5-25-41		CULVS. 292+00, 300+75, 303+70 CONST. & MAIN CHANNEL STA. 289+25 - 290+50

Relinquished to Town #17/4
Bk 40 Pg 493-494
59' right of 279+37 to 303+43 (85')

ESTIMATED QUANTITIES	

Surveyed by C.E. Putnam
Designed by A.J. Runnals
Drawn by W.J. Brock
Traced by
Checked by
Series STATE No. 231-L Filed
Sheet 5 of 46 Sheets

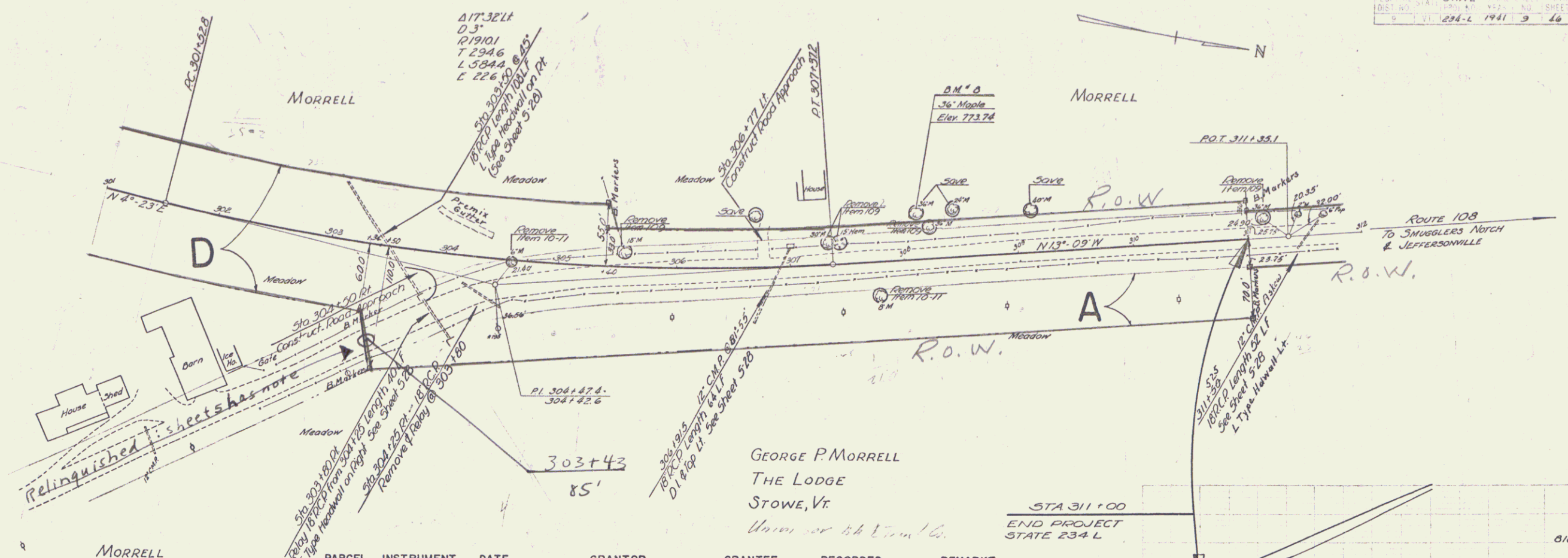


Standard Underdrain to be constructed as shown on the cross sections. Poor foundation material not to be removed except as necessary to construct the underdrain. This drain is designed to serve the dual purpose of draining the wet area and to attempt to maintain the source of water flow available for the house on the left of station 287+00.

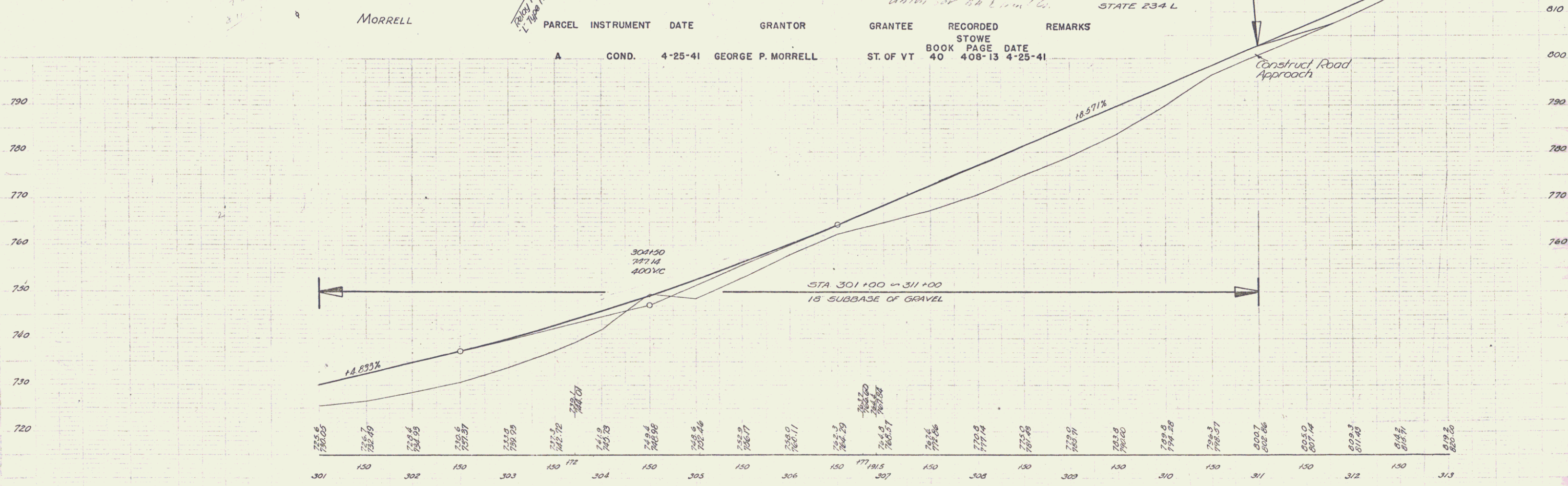
Any excess excavation on the project, after all the embankments are made, is to be disposed of by the contractor on the road southeast of the project within a two mile haul. This material is to be used at the locations specified by the engineer and the disposal of the same is to be included in the original bid price for Common Excavation including Borrow - Item 10 & 11.

ESTIMATED QUANTITIES	

Surveyed by C.E. Putnam
 Designed by A.J. Runnels
 Drawn by W.J. Brock
 Traced by -
 Checked by -
 Series STATE No. 234-L Filed
 Sheet 7 of 66 Sheets



PARCEL	INSTRUMENT	DATE	GRANTOR	GRANTEE	RECORDED	REMARKS
A	COND.	4-25-41	GEORGE P. MORRELL	ST. OF VT	BOOK PAGE DATE 40 408-13 4-25-41	



B.M. # 8 SPIKE IN ROOT OF 36' MAPLE 34' LT OF STA. 307+41 ELEV. 773.74