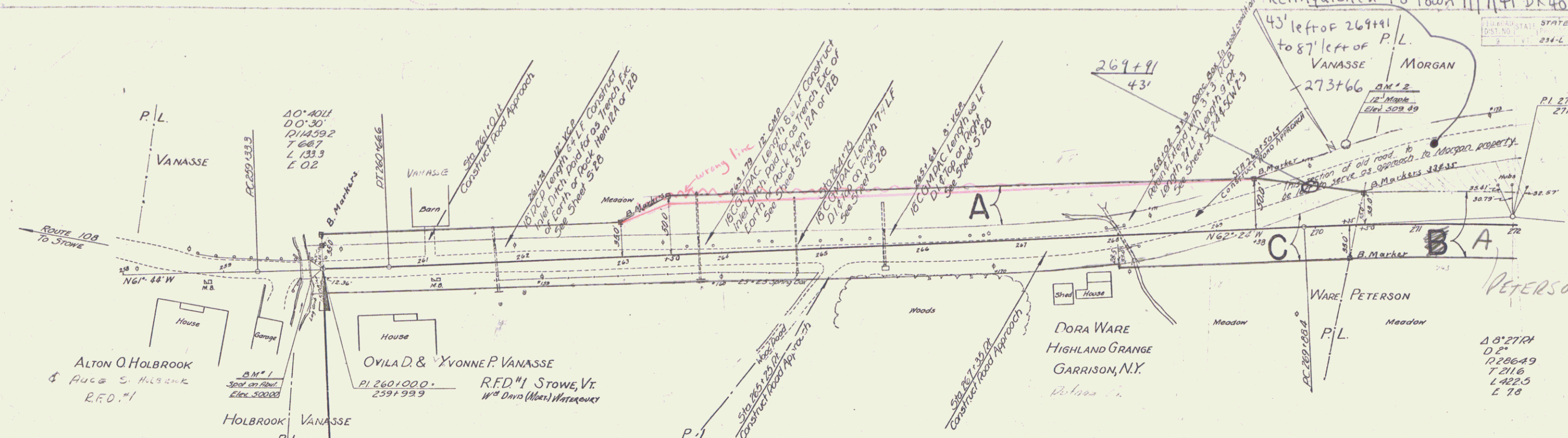


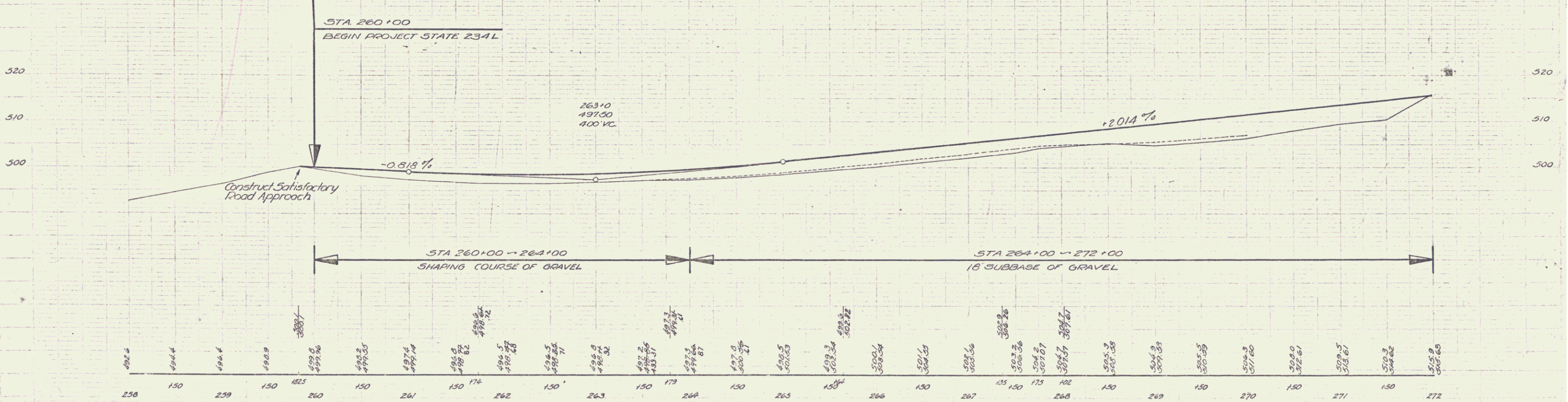
STATE FISCAL DIST. NO. 234-L 1941 4 46

Relinquished to Town 11/7/41 BK 40 Pg 493, 494



Removal of poor foundation material
 Station 261+25 to Station 264+00 Right
 - 261+25 - 267+00 Left
 - 270+25 - 274+00 Left & Right
 Poor foundation material to be used on slopes between
 1 on 1 1/2 & 1 on 4 Slope lines of locations shown on cross
 sections or as ordered by the Engineer. This work to be paid
 for as common excavation including borrow item 10-1,
 measured in its original location.

PARCEL	INSTRUMENT	DATE	GRANTOR	GRANTEE	RECORDED BOOK	STOWE PAGE	DATE	REMARKS
A	W.D.O.E.	6/9/41	OVILA & YVONNE VANASSE	ST. OF VT.	40	438-439	6-11-41	
C	COND.	4/25/41	MRS. DORA WARE	ST. OF VT.	40	408-413	4-25-41	



B.M. #1 SPOT ON CONG. BRIDGE, 14' BT OF STA 259+90 ELEV 500.00
 B.M. #2 SPIKE IN TRUNK OF 12" MAPLE 78' LT OF STA 270+35 ELEV 509.49

STOWE SERIES 371 No 234-L SHEET 4 OF 46