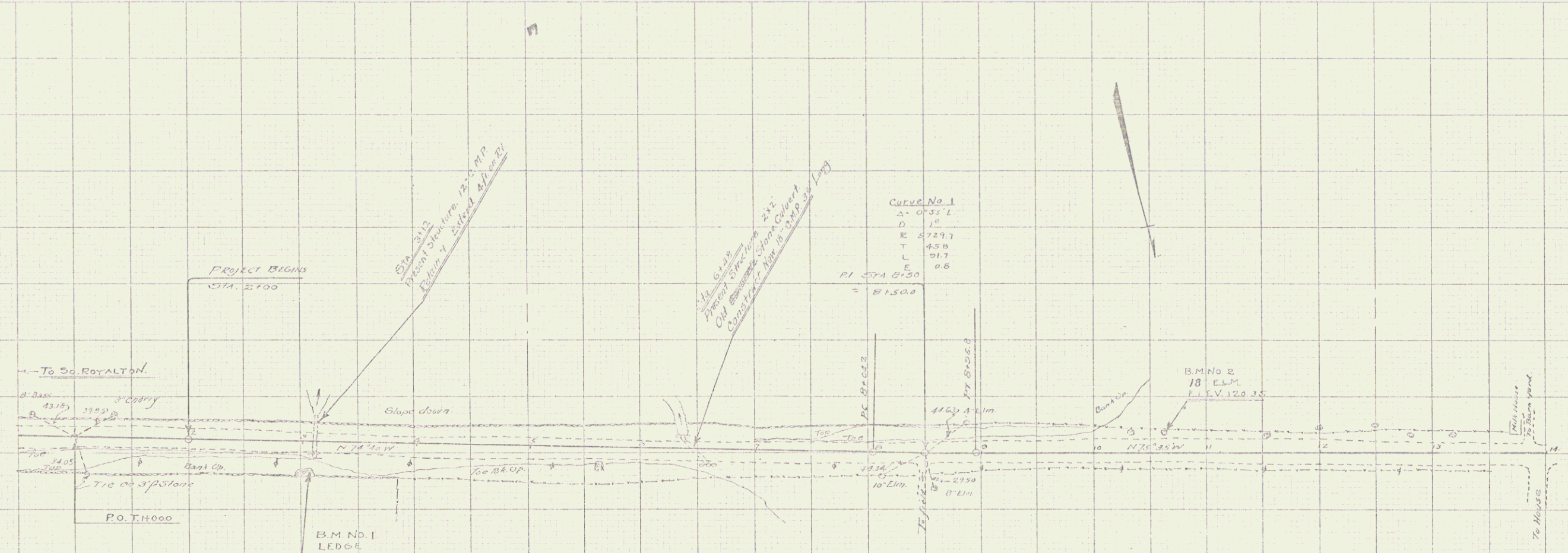
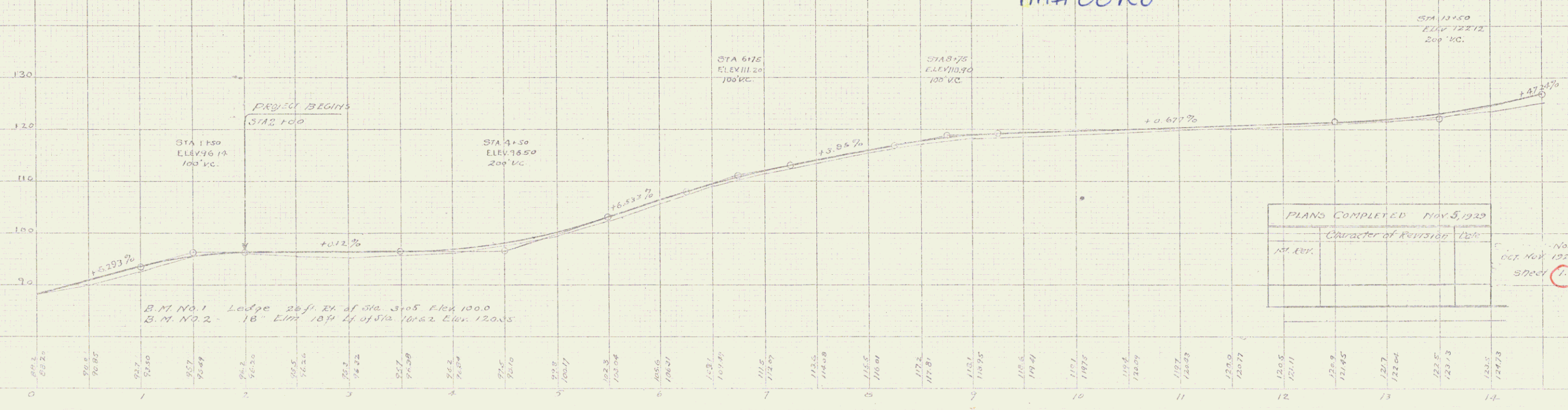


POOR ORIGINAL COPY



Town: Royalton
 Project No: mm 0.20-1.20
 Date: 11/1/29
 Rte. UT 107
 Pin# 00R030

MP 1.115-0.224



PLANS COMPLETED May 5, 1929
 CHARACTER OF REVISIONS 120'

TOWN OF ROYALTON
 No. ROYALTON BELMEL ROAD.
 OCT. NOV. 1929
 SPEC. 1.