

- CABLE GUARD-RAIL REQUIRED -
ON LEFT -
STA. 6+00 TO STA. 8+00, LENGTH - 200 FT.

- WOOD GUARD-RAIL REQUIRED -
ON RIGHT -
STA. 6+00 TO STATION - 6+24, LENGTH - 24 FT.

ED. MAP. DIST. NO.	STATE	FED. AID PROJ. NO.	SCALE	SHEET NO.	TOTAL SHEETS
3	VT.	FR 3B	1/528	1	

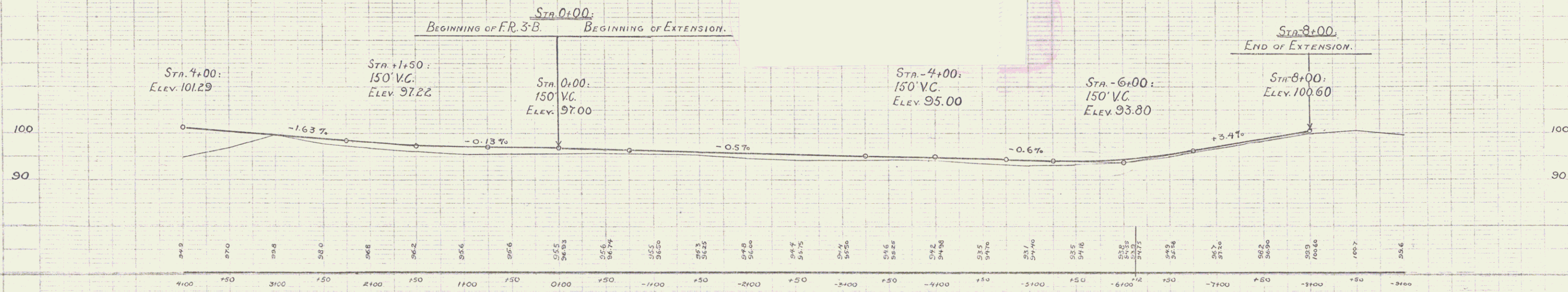
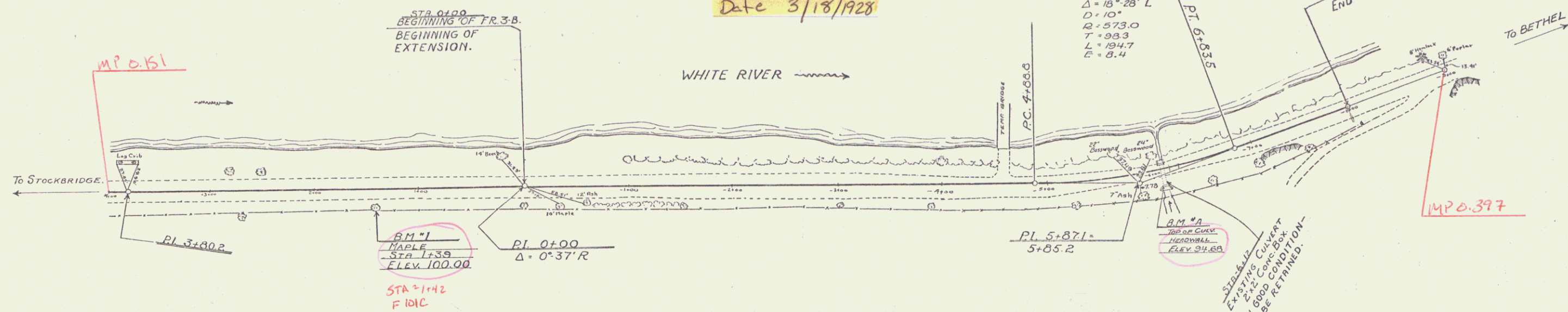
TOWNS OF
BETHEL - STOCKBRIDGE

Project FR 3B

Pin # 00R028

Route VT107

Date 3/18/1928



BM 'I', MAPLE, RIGHT, STA. 1+39 ~ ELEV. 100.00.
BM 'A', TOP OF CULVERT HEAD-WALL, RIGHT, STA. 6+12 ~ ELEV. 94.68.

SERIES FR. No 3B
SHEET 1 OF
EXTENSION TOWARD BETHEL.

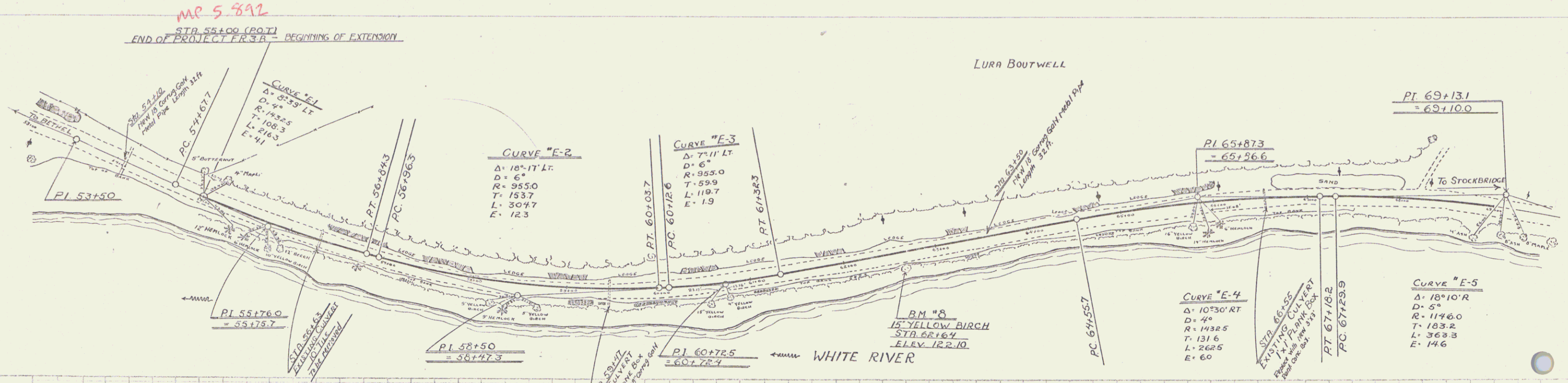
CABLE GUARD RAIL REQUIRED
 ON RIGHT
 Sta 55+00 to Sta 69+00 Length 1400ft

WOOD GUARD RAIL REQUIRED
 ON LEFT
 Sta 59+35 to Sta 59+59 Length 24ft
 Sta 63+38 to Sta 63+62 Length 24ft
 Sta 66+43 to Sta 66+67 Length 24ft

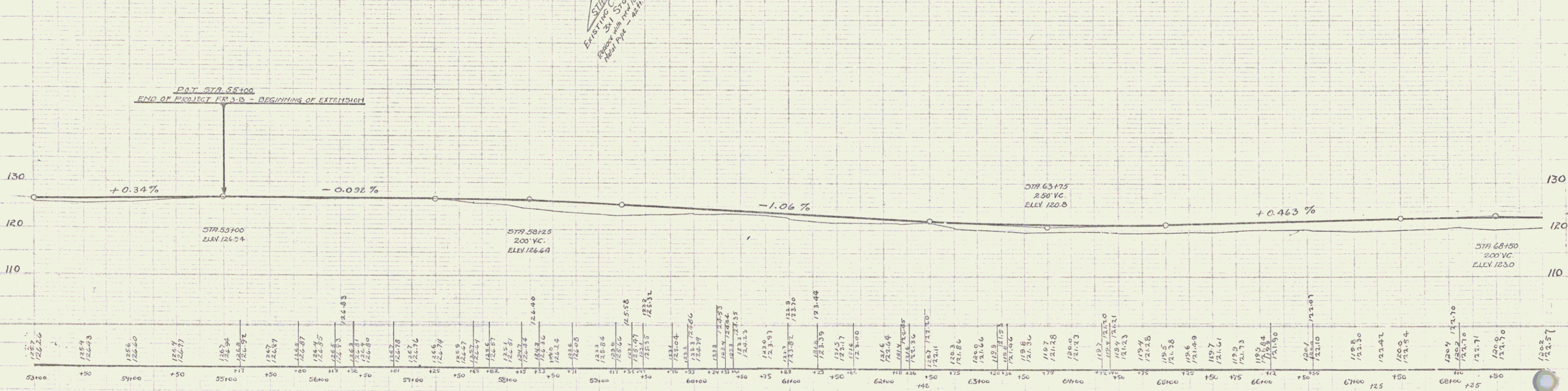
NEW CULVERTS REQUIRED

Sta 54+10	New 18" Corrugated Metal Pipe Length 32 ft	Culvert quantities are 54+10 not included in estimate of extension.
	Concrete Class "B" (1-24-5) Reinforcing Steel	
Sta 59+47	New 18" Corrugated Metal Pipe Length 42 ft	33 Lbs.
	Concrete Class "B" (1-24-5) Reinforcing Steel	
Sta 63+50	New 18" Corrugated Metal Pipe Length 32 ft	33 Lbs.
	Concrete Class "B" (1-24-5) Reinforcing Steel	
Sta 66+55	New 3.5' Round Concrete Box Length 36 ft	117 Lbs.
	Concrete Class "B" (1-24-5) Reinforcing Steel	

PL 53+50
 PL 55+76.0
 PL 58+50
 PL 60+72.5
 PL 65+87.3
 PL 67+131



PL 53+50
 PL 55+76.0
 PL 58+50
 PL 60+72.5
 PL 65+87.3
 PL 67+131



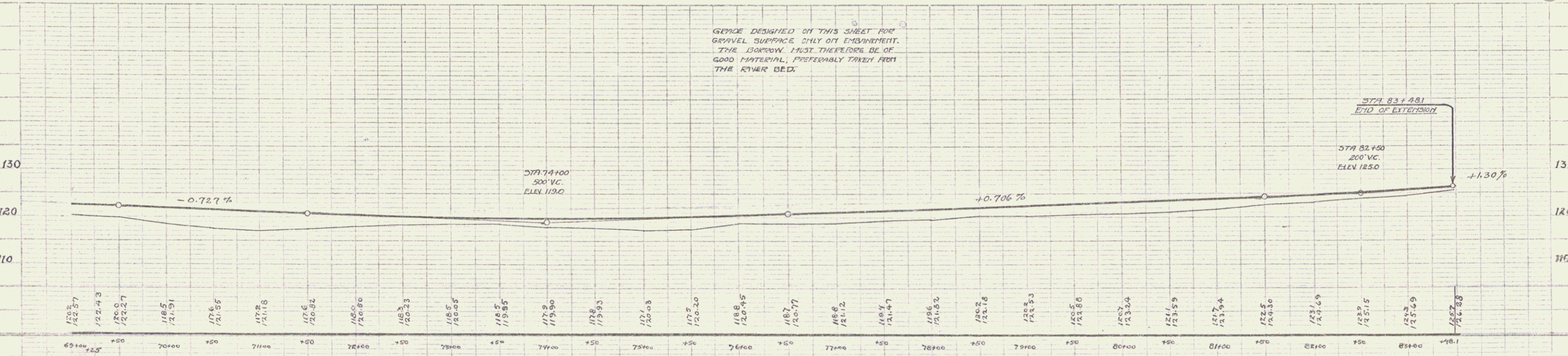
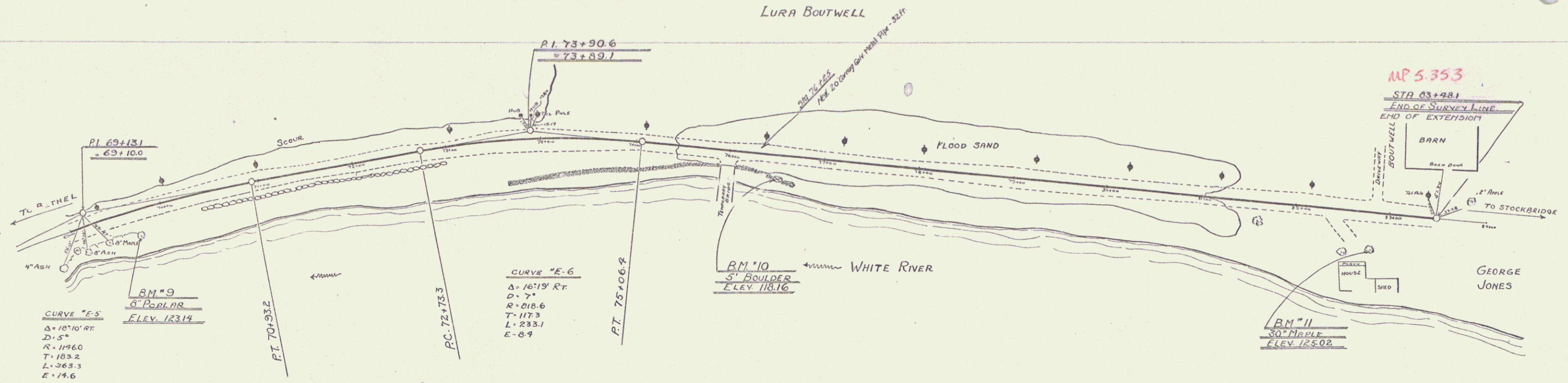
B.M. 7: Spike in Pine Stump, Right Sta 52+20 - Elev. 125.42
 B.M. 8: 15" Yellow Birch, Right Sta 62+64 - Elev. 122.10

SERIES E.R. NO. 38
 SHEET 2 OF
 EXTENSION TOWARD STOCK
 BRIDGE

CABLE GUARD PILE REQUIRED
ON RIGHT
Sta. 69+00 to Sta. 72+60 Length 360ft.

WOOD GUANO PILE REQUIRED
ON LEFT
Sta. 76+13 to Sta. 76+37 Length 24ft.
ON RIGHT
Sta. 76+13 to Sta. 76+37 Length 24ft.

NEW CULVERTS REQUIRED
Sta. 76+25 New 20" Corrug. Galv. Metal Pipe Length 32ft.
Concrete Class. 7(1-2-4)
Elongating Steel
28 cu yds.
54 lbs.



GRADE DESIGNED ON THIS SHEET FOR GRAVEL SURFACE ONLY ON ENVIRONMENT. THE DRAINAGE MUST THEREFORE BE OF GOOD MATERIAL, PREFERABLY TAKEN FROM THE RIVER BED.

B.M. #9: SPIKE IN 8" POPLAR, RT. STA. 69+66 ~ ELEV. 123.14
B.M. #10: 5' BOULDER, RT. STA. 76+52 ~ ELEV. 118.16
B.M. #11: SPIKE IN 30" MAPLE, RT. STA. 82+77, ~ ELEV. 125.02

SERIES FR. N. 38
SHEET 3 OF
EXTENSION TOWARD STOCKBRIDGE