

**INDEX OF SHEETS**

SHEET NO.	TITLE PAGE
1	TITLE PAGE
2	TYPICAL CROSS-SECTION OF IMPROVEMENT 3" BITUMINOUS CONCRETE PAVEMENT
3	ROADWAY STANDARD SHEET RS 56-1 (BANKING TABLES)
4	QUANTITY SHEET (ITEMS)
5	QUANTITY SHEET (DRAINAGE)
6-9	EARTHWORK SHEETS
10-17	PLAN AND PROFILE SHEETS
18	DETAILS OF 4'x6' R.O. BOX EXTENSION 147-74.5
19	ROADWAY STANDARD SHEET RS 56-2 (DROP INLETS)
20	ROADWAY STANDARD SHEET RS 56-3 (MARKERS)
21	ROADWAY STANDARD SHEET RS 56-4 (DRAINAGE)
22	ROADWAY STANDARD SHEET RS 56-5 (CONC. CURB, GRANITE CURB, CONC. S.W.)
23	ROADWAY STANDARD SHEET RS 56-6 (TYPICAL GRADING & TURNOUTS)
24	ROADWAY STANDARD SHEET RS 56-11 (THREE CABLE GUARD RAIL W/ STEEL POSTS)
25	ROADWAY STANDARD SHEET RS 56-12 (BARRICADES, SIGNS & LIGHTS)
25-A	DETAILS OF 84" A.C. PIPE (PRECAST R.C.P. DROP INLETS OR CATCH BASINS)
25-B	REINFORCING STEEL SCHEDULE
25-C	STANDARD STRUCTURE SHEET SO 21 (EXPANSION JOINTS)
26-92	CROSS SECTIONS

STATE OF VERMONT  
DEPARTMENT OF HIGHWAYS

PROPOSED IMPROVEMENT

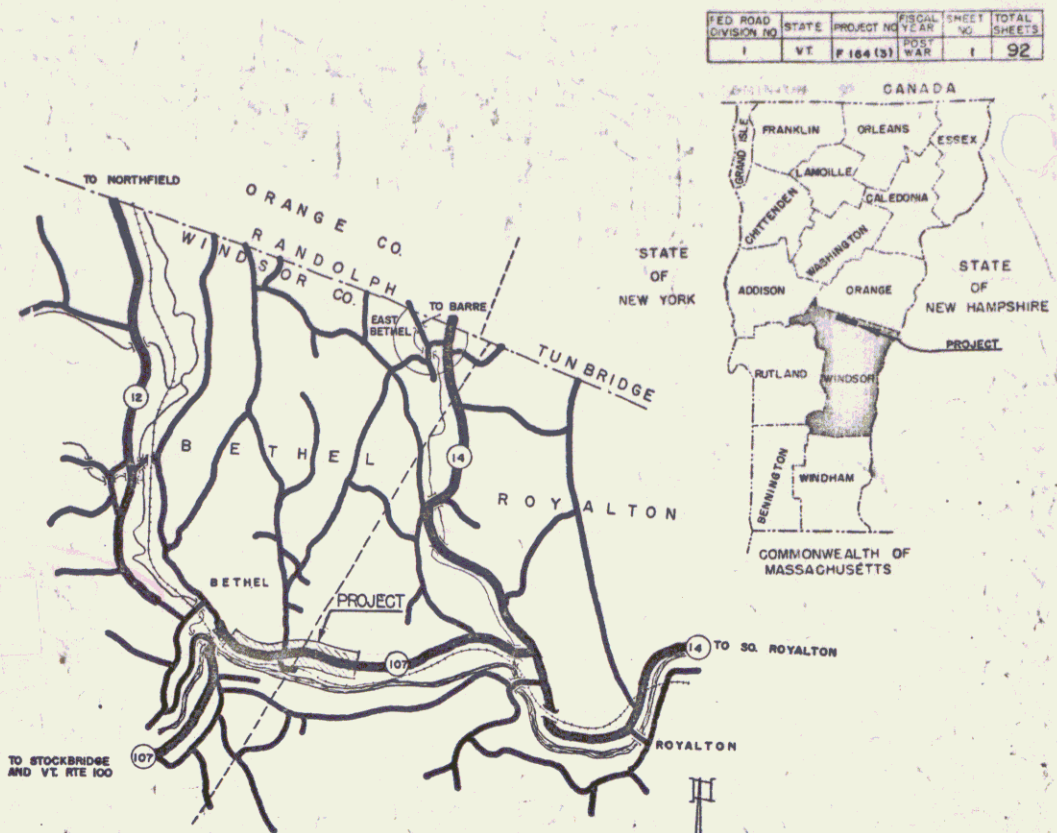
FEDERAL AID PROJECT

TOWNS OF ROYALTON-BETHEL

COUNTY OF WINDSOR  
VERMONT ROUTE 107  
ROYALTON-BETHEL ROAD

BEGINNING AT A POINT APPROXIMATELY 10,356.0 FEET WEST OF THE INTERSECTION OF VERMONT ROUTES 107 AND 14 AND EXTENDING WESTERLY

LENGTH OF PROJECT 7,538.6 FEET = 1.428 MILES



FED. ROAD DIVISION NO.	STATE	PROJECT NO.	SECTION NO.	SHEET NO.	TOTAL SHEETS
1	VT	F-164 (3)	1	1	92

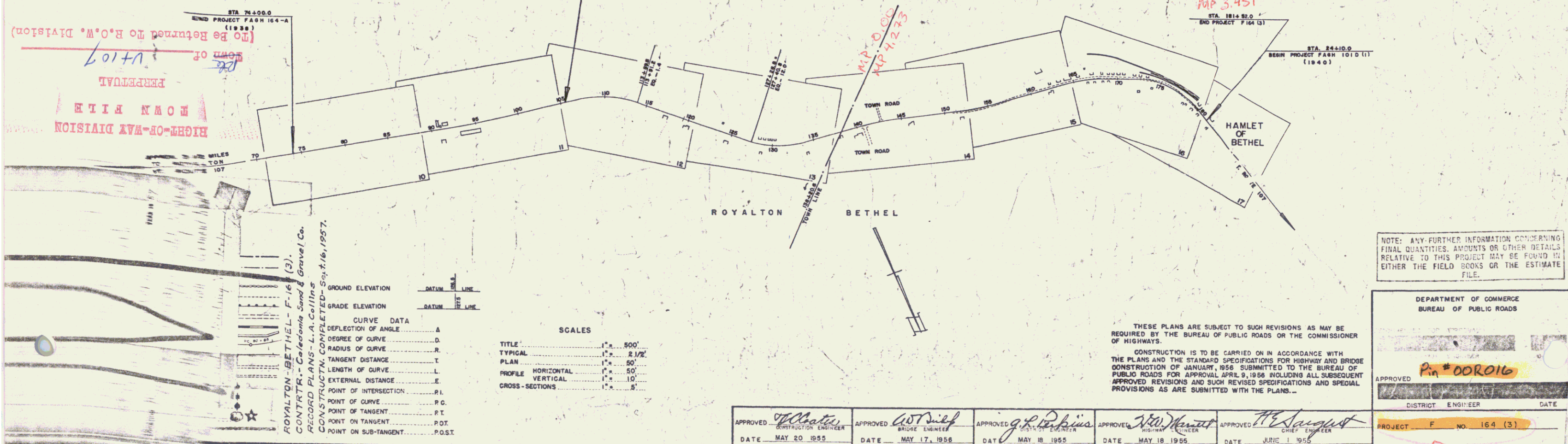
PROJECT NAME	PROJECT NUMBER	SURFACE TYPE	PAVEMENT AREA
Royalton-Bethel	F-164 (3)	3" Bitum. Concrete	23,810 sq. yd.

**MATERIALS**

DESCRIPTION	SOURCE
BASE OF GRAVEL	Asheley Bros. Bur., Royalton, VT
2" CURB CURBS	Asheley Bros. Bur., Royalton, VT
BACKFILL	Asheley Bros. Bur., Royalton, VT
BASE	Asheley Bros. Bur., Royalton, VT
CONCRETE	Asheley Bros. Bur., Royalton, VT
STEEL	Asheley Bros. Bur., Royalton, VT
GRANITE CURB	Asheley Bros. Bur., Royalton, VT
BOUNDARY MARKERS	Asheley Bros. Bur., Royalton, VT

**CONTRACT DATED - Aug. 27, 1956**  
**CONSTRUCTION STARTED - Aug. 30, 1956**  
**CONSTN. SUSPENDED - 2-2-57. RESUMED - 4-3-57.**  
**CONSTRUCTION COMPLETED - Sept. 16, 1957.**  
**CONTRACT ACCEPTED - Sept. 16, 1957.**

DESIGN	DESIGNATION
ADT (1955)	1260
ADT (1975)	800
DHV	800
D	82 %
T	12 %



APPROVED	APPROVED	APPROVED	APPROVED	APPROVED
CONSTRUCTION ENGINEER	BRIDGE ENGINEER	CITY ENGINEER	HIGHWAY ENGINEER	CHIEF ENGINEER
<i>[Signature]</i>	<i>[Signature]</i>	<i>[Signature]</i>	<i>[Signature]</i>	<i>[Signature]</i>
DATE MAY 20 1955	DATE MAY 17 1956	DATE MAY 18 1955	DATE MAY 18 1955	DATE JUNE 1 1955

NOTE: ANY FURTHER INFORMATION CONCERNING FINAL QUANTITIES, AMOUNTS OR OTHER DETAILS RELATIVE TO THIS PROJECT MAY BE FOUND IN EITHER THE FIELD BOOKS OR THE ESTIMATE FILE.

DEPARTMENT OF COMMERCE  
BUREAU OF PUBLIC ROADS

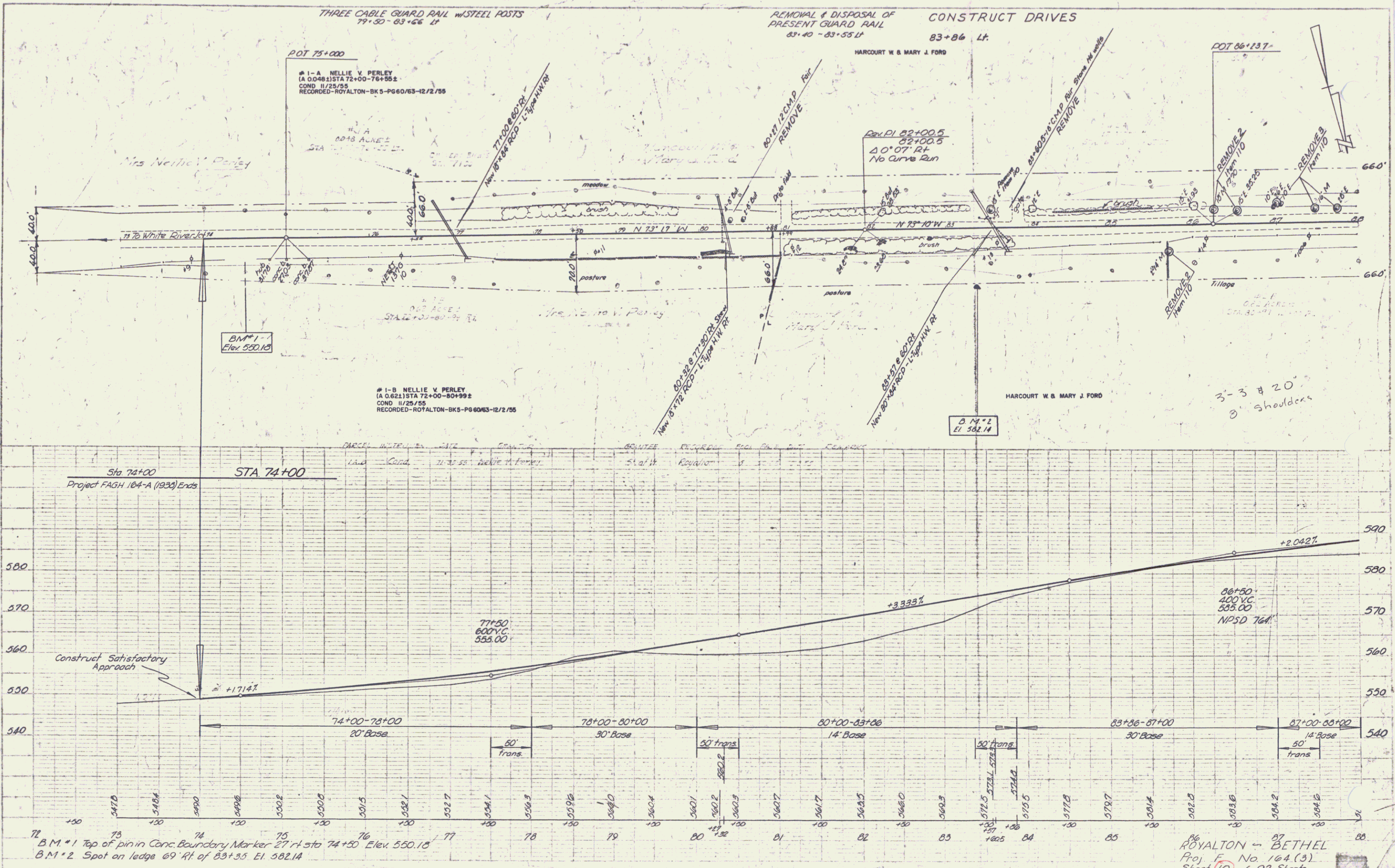
APPROVED *[Signature]*  
DISTRICT ENGINEER

PROJECT F NO 164 (3)

SHEET 1 OF 92 SHEETS

No. 10  
 8-54  
 Jones  
 8-54  
 PLAN  
 DATE BOOK PLANNING CHECKED  
 DATE BOOK DRAWING CHECKED  
 DATE BOOK IN CHARGE  
 DATE BOOK IN CHARGE

11/24  
 6-54  
 Jones  
 6-54  
 PROFILE  
 DATE BOOK PLANNING CHECKED  
 DATE BOOK DRAWING CHECKED  
 DATE BOOK IN CHARGE  
 DATE BOOK IN CHARGE



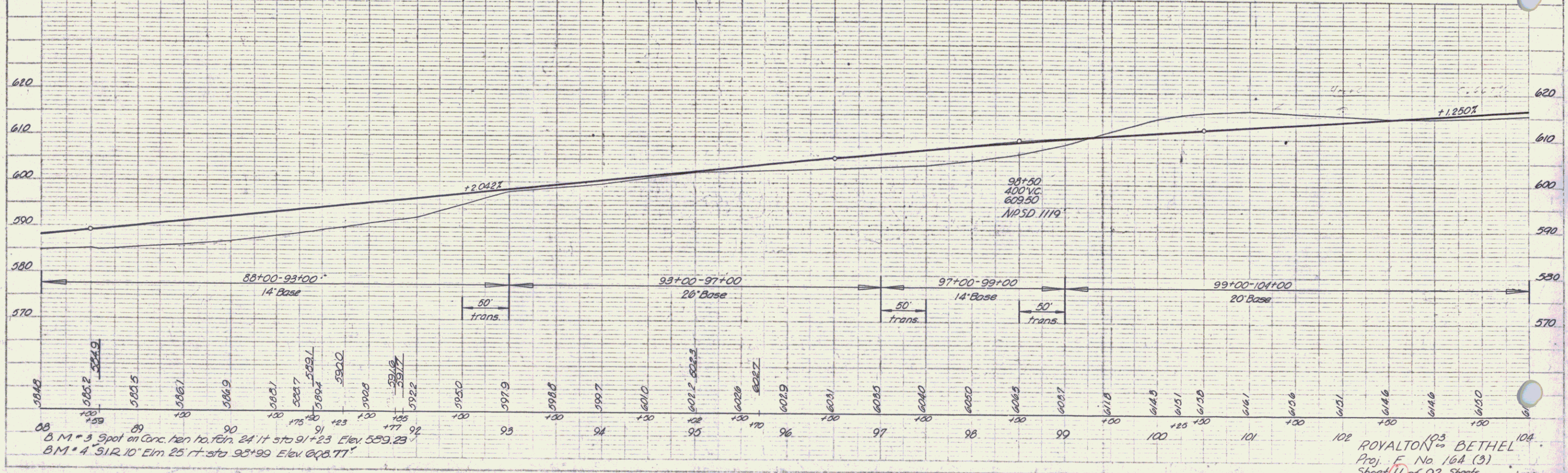
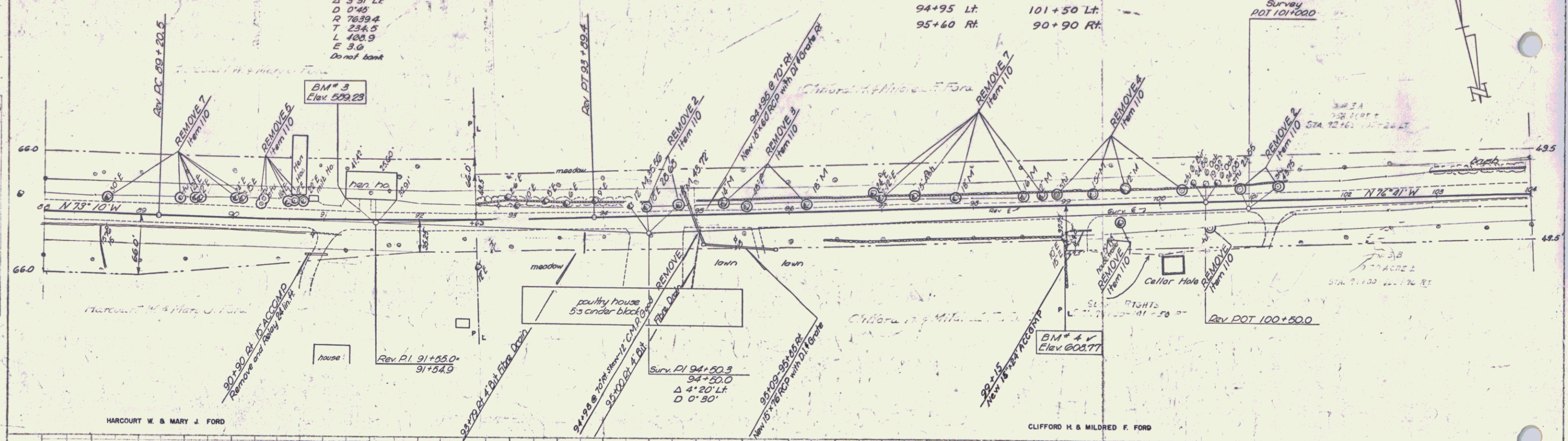
HARCOURT W & MARY J FORD

CLIFFORD H & MILDRED F FORD

### CONSTRUCT DRIVES

- 91+85 Lt.
- 94+60 Rt.
- 94+95 Lt.
- 95+60 Rt.
- 99+15 Rt.
- 101+50 Lt.
- 90+90 Rt.

Rev Curve  
 $\Delta$  3°31' Lt.  
 D 0'45"  
 R 7639.4  
 T 234.5  
 L 108.9  
 E 3.0  
 Do not bank

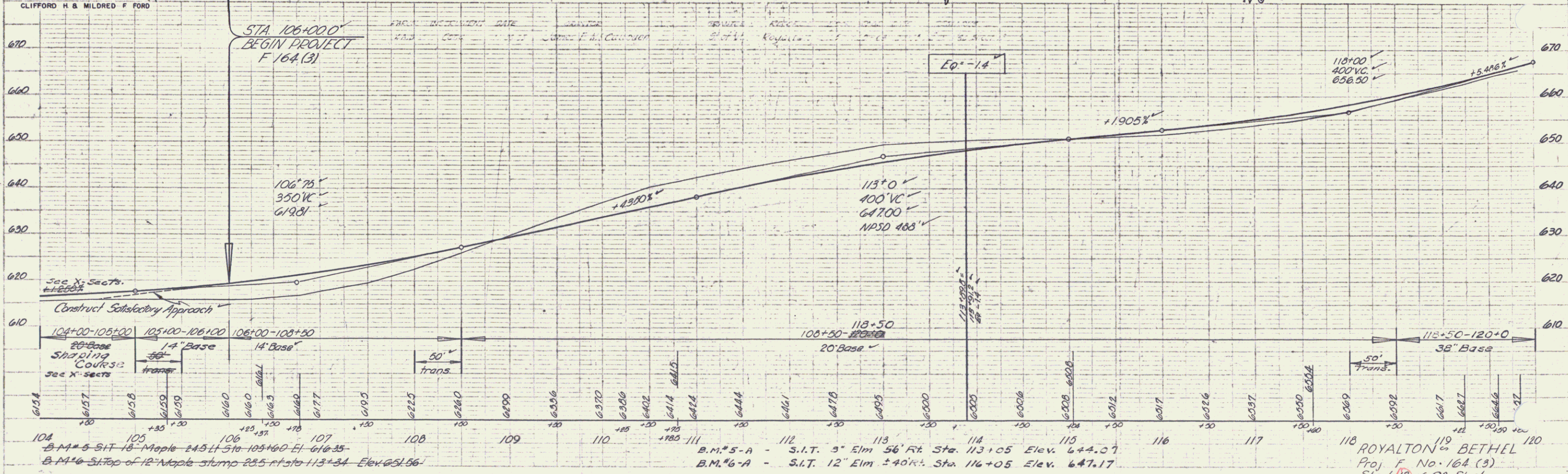
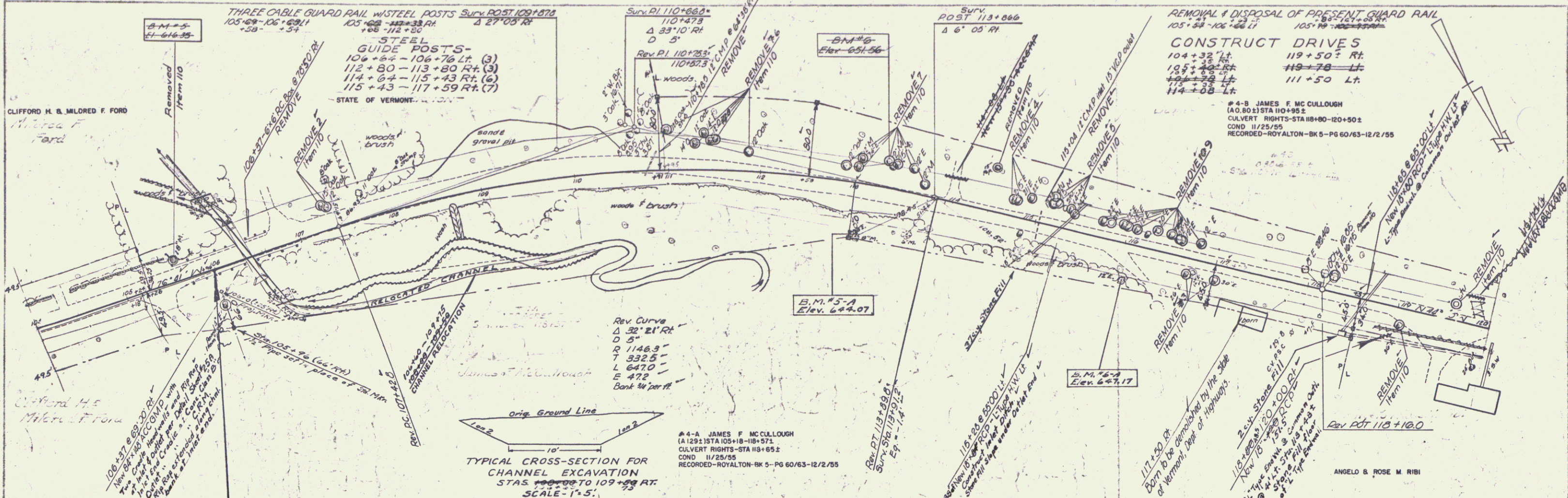


PLAN  
 SCALE: 1" = 40'  
 DATE: 1/15/52  
 DRAWN BY: J. JONES

PROFILE  
 SCALE: 1" = 10'  
 DATE: 1/15/52  
 DRAWN BY: J. JONES

B.M. # 3 Spot on Conc. hen no. 24 1/2' sta 91+23 Elev. 559.23  
 B.M. # 4 5' 12" Elm 25' rt. sta 95+99 Elev. 608.77

ROYALTON<sup>05</sup> BETHEL  
 Proj. F No 16A (3)  
 Sheet 11 of 92 Sheets



PLAN

DATE	11/92
BY	ANGLO & ROSE M. RIBI
CHECKED BY	
IN CHARGE	
NOTE BOOK	
NO.	

PROFILE

DATE	11/92
BY	ANGLO & ROSE M. RIBI
CHECKED BY	
IN CHARGE	
NOTE BOOK	
NO.	

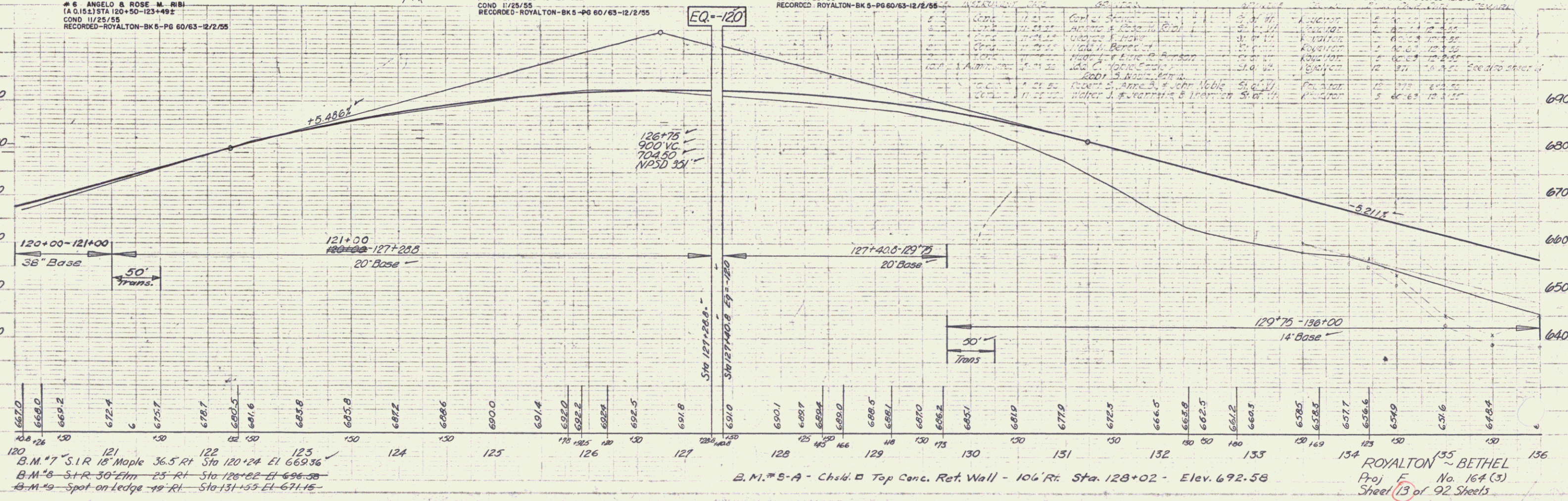
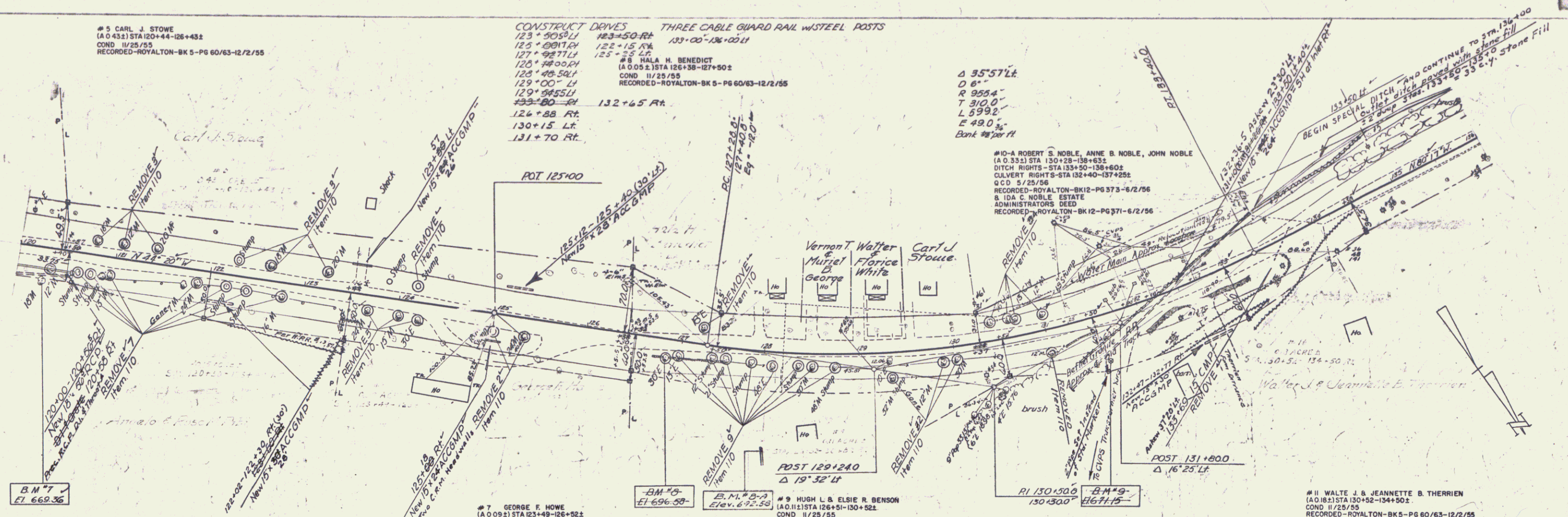
104 B.M.#5-SIT 18-Maple 24.5 ft Sta 105+60 El. 618.35  
 105 B.M.#5-SIT 18-Maple 24.5 ft Sta 105+60 El. 618.35  
 106 B.M.#5-SIT 18-Maple 24.5 ft Sta 105+60 El. 618.35  
 107 B.M.#5-SIT 18-Maple 24.5 ft Sta 105+60 El. 618.35  
 108 B.M.#5-SIT 18-Maple 24.5 ft Sta 105+60 El. 618.35  
 109 B.M.#5-SIT 18-Maple 24.5 ft Sta 105+60 El. 618.35  
 110 B.M.#5-SIT 18-Maple 24.5 ft Sta 105+60 El. 618.35  
 111 B.M.#5-SIT 18-Maple 24.5 ft Sta 105+60 El. 618.35  
 112 B.M.#5-A - S.I.T. 5" Elm 56' Rt. Sta. 113+05 Elev. 644.07  
 113 B.M.#5-A - S.I.T. 5" Elm 56' Rt. Sta. 113+05 Elev. 644.07  
 114 B.M.#6-A - S.I.T. 12" Elm 40' Rt. Sta. 116+05 Elev. 647.17  
 115 B.M.#6-A - S.I.T. 12" Elm 40' Rt. Sta. 116+05 Elev. 647.17  
 116 B.M.#6-A - S.I.T. 12" Elm 40' Rt. Sta. 116+05 Elev. 647.17  
 117 B.M.#6-A - S.I.T. 12" Elm 40' Rt. Sta. 116+05 Elev. 647.17  
 118 ROYALTON on BETHEL  
 119 Proj. F. No. 164 (3)  
 120 Sheet 12 of 92 Sheets

# 5 CARL J. STOWE  
 (A O 432) STA 120+44-126+45.2  
 COND 11/25/55  
 RECORDED-ROYALTON-BK 5-PG 60/63-12/2/55

CONSTRUCT DRIVES THREE CABLE GUARD RAIL W/STEEL POSTS  
 123+90.5 LI 123+50 RT 133+00-136+00 LI  
 125+00 RT 122+15 RT  
 127+98.7 LI 125+25 LI  
 128+00 RT 125+00 RT  
 128+48.5 LI  
 129+00 LI  
 129+98.5 LI  
 130+80 RT 132+65 RT  
 126+88 RT  
 130+15 LI  
 131+70 RT

Δ 35° 57' Lt  
 D 6"  
 R 955.4'  
 T 310.0'  
 L 599.2'  
 E 49.0'  
 Bank 48' 2" H

# 10-A ROBERT S. NOBLE, ANNE B. NOBLE, JOHN NOBLE  
 (A O 332) STA 130+28-136+03.2  
 DITCH RIGHTS-STA 133+50-136+02  
 CULVERT RIGHTS-STA 132+40-137+25  
 O.C.D. 5/29/56  
 RECORDED-ROYALTON-BK 12-PG 373-6/2/56  
 B. I.D.A. C. NOBLE ESTATE  
 ADMINISTRATORS DEED  
 RECORDED-ROYALTON-BK 12-PG 371-6/2/56



B.M. #7 S.I.R. 18 Maple 36.5 Rt. Sta 120+24 El 669.36  
 B.M. #8 S+R 50 Elm 25 Rt Sta 126+82 El 696.38  
 B.M. #9 Spot on ledge 19 Rt Sta 131+53 El 671.15

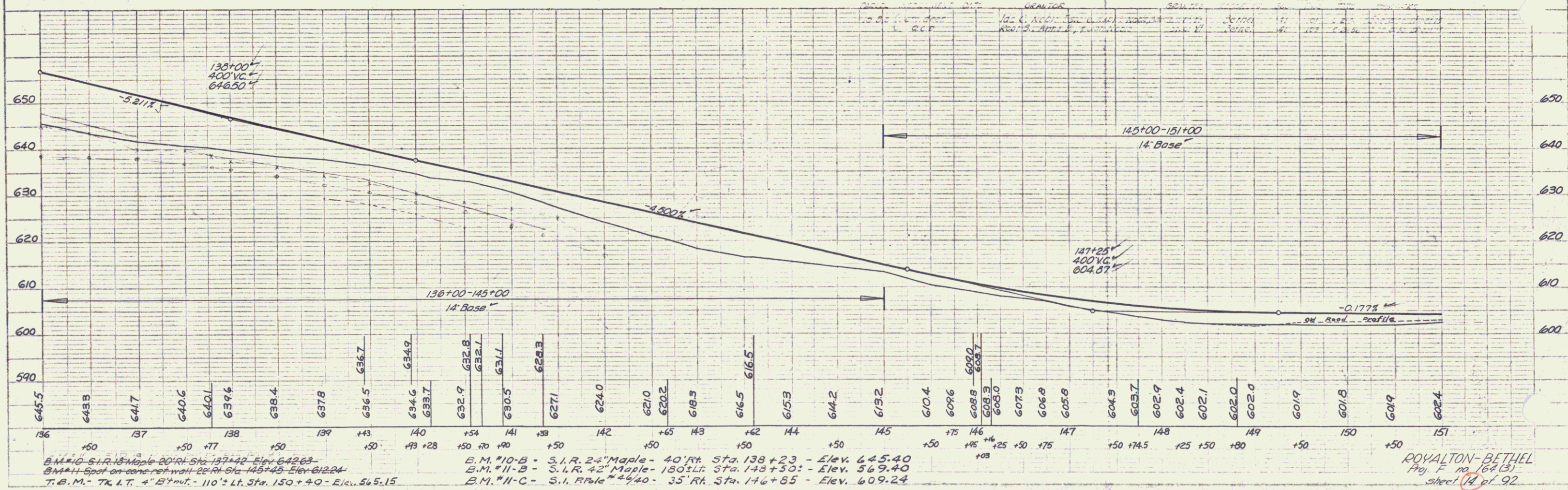
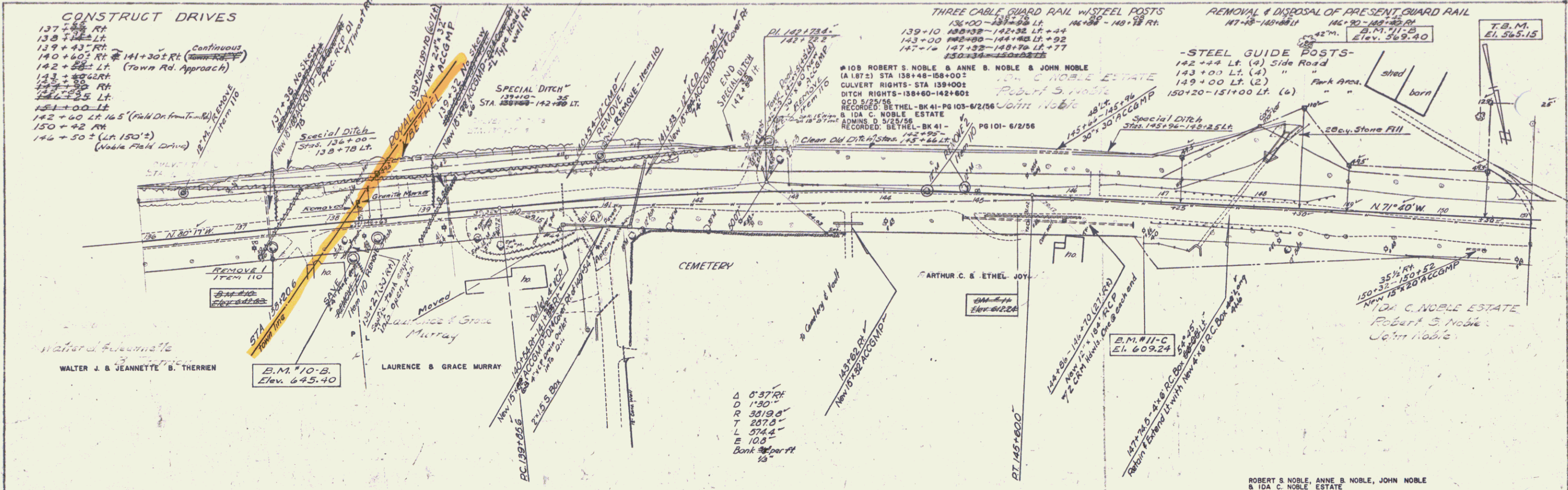
B.M. #8-A Chalk Top Conc. Ret. Wall - 106' Rt. Sta. 128+02 - Elev. 692.58

ROYALTON - BETHEL  
 Proj. No. 164 (3)  
 Sheet 13 of 92 Sheets

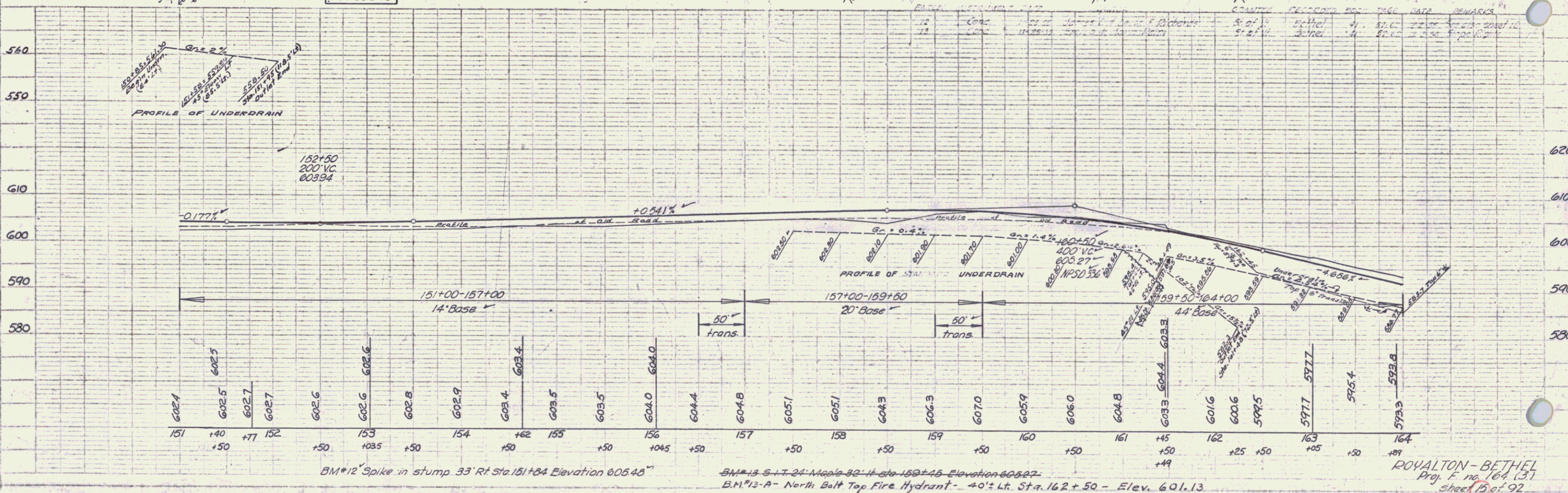
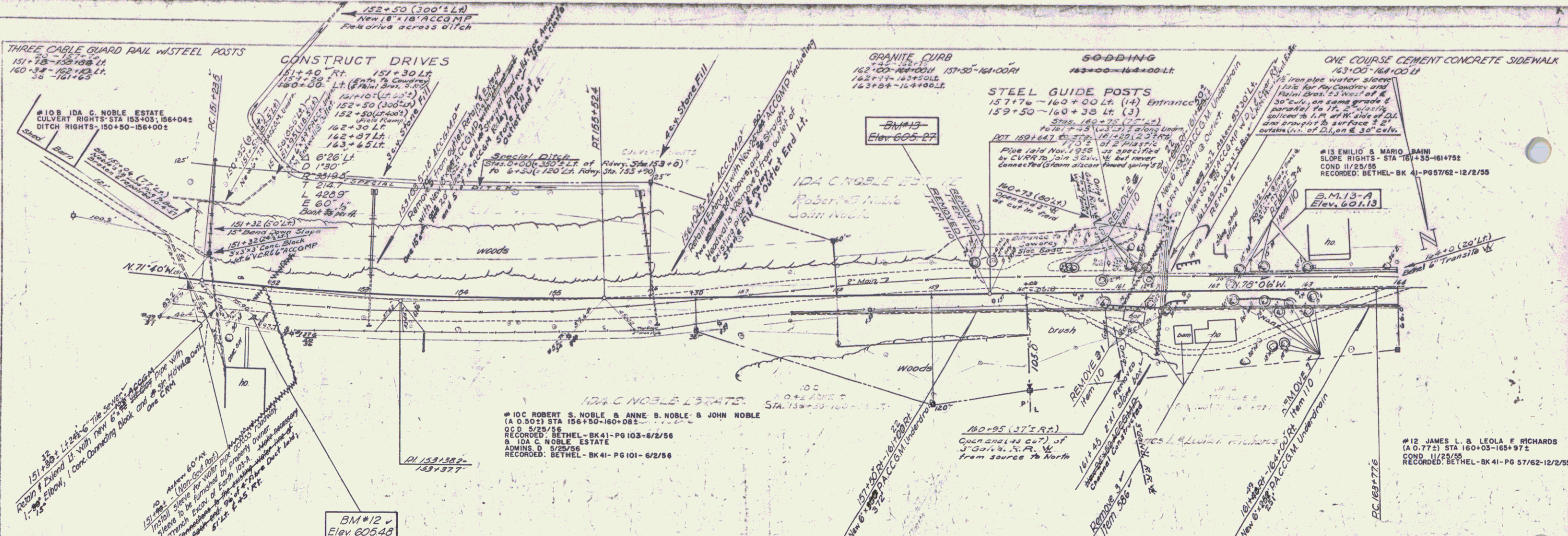
**CONSTRUCT DRIVES**

- 137+85 RT
- 138+85 LT
- 139+43 RT
- 140+60 RT & 141+30 RT (Continuous)
- 142+50 LT (Town Rd. Approach)
- 143+50 RT
- 144+25 LT
- 145+00 LT
- 142+60 LT 145' (Field Dr. from Town Rd.)
- 150+42 RT
- 146+50 ± (LT 150'±)
- 146+50 ± (Noble Park Drive)

PLAN	DATE	BY
REVISIONS		
1		
2		
3		
4		
5		
6		
7		
8		
9		
10		
11		
12		
13		
14		
15		
16		
17		
18		
19		
20		
21		
22		
23		
24		
25		
26		
27		
28		
29		
30		
31		
32		
33		
34		
35		
36		
37		
38		
39		
40		
41		
42		
43		
44		
45		
46		
47		
48		
49		
50		
51		
52		
53		
54		
55		
56		
57		
58		
59		
60		
61		
62		
63		
64		
65		
66		
67		
68		
69		
70		
71		
72		
73		
74		
75		
76		
77		
78		
79		
80		
81		
82		
83		
84		
85		
86		
87		
88		
89		
90		
91		
92		
93		
94		
95		
96		
97		
98		
99		
100		



B.M. #10 - S.I.R. 18" Maple - 20' RT Sta. 137+42 - Elev. 642.85  
 B.M. #11 - Spot on conc. ret. wall - 22' RT Sta. 145+45 - Elev. 612.24  
 T.B.M. - 7x1/2" - 4" B.M. - 110' Lt. Sta. 150+40 - Elev. 565.15  
 B.M. #10-B - S.I.R. 2" Maple - 40' RT Sta. 138+23 - Elev. 645.40  
 B.M. #11-B - S.I.R. 2" Maple - 130' Lt. Sta. 143+50 - Elev. 569.40  
 B.M. #11-C - S.I.R. 1" Maple - 44' - 35' RT Sta. 146+85 - Elev. 609.24



PLAN  
 DATE  
 BY  
 CHECKED  
 APPROVED

PROFILE  
 DATE  
 BY  
 CHECKED  
 APPROVED

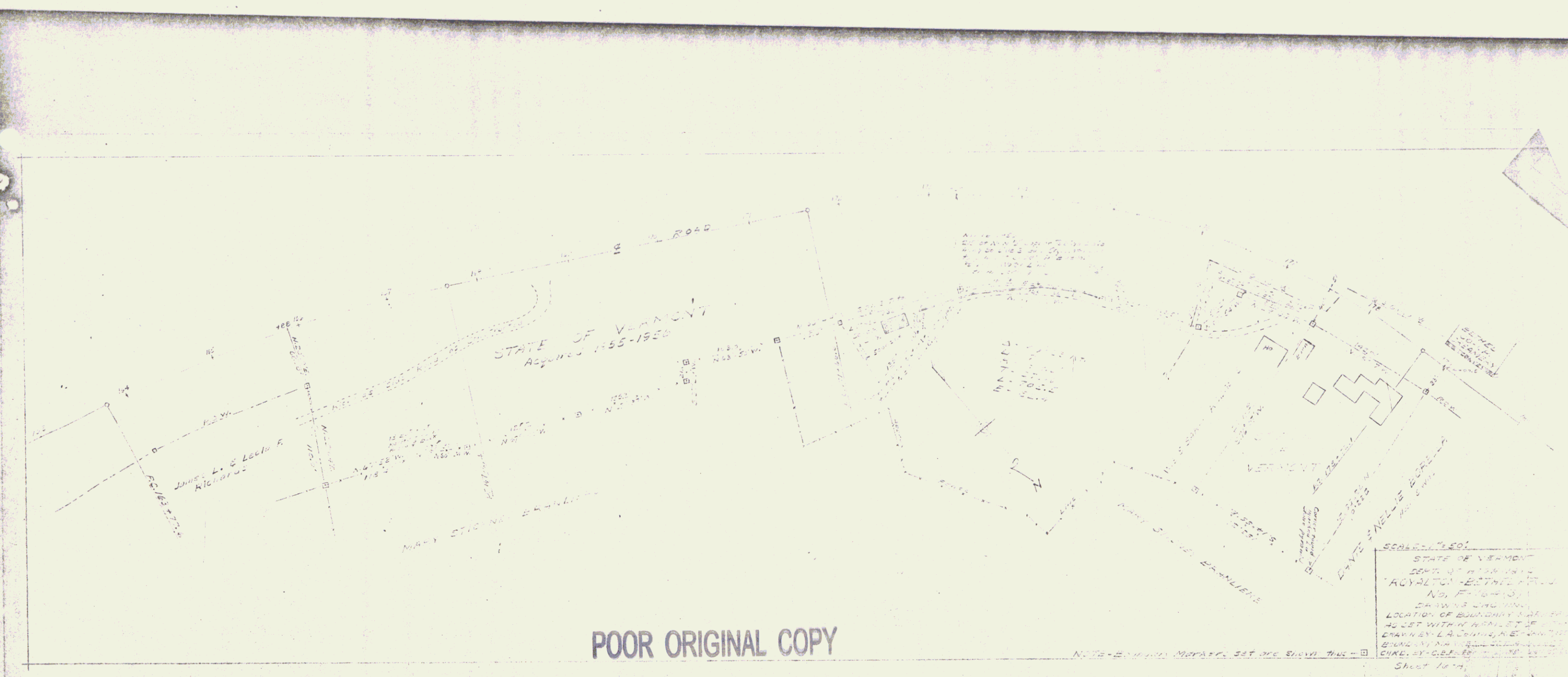
BM#12 Spike in stump 33' Rt Sta. 151+84 Elevation 605.43

BM#13 S.T. 24' Maple 32' Lt Sta. 159+45 Elevation 605.27

BM#13-A North Belt Top Fire Hydrant - 40' Lt. Sta. 162+50 - Elev. 601.13

ROVALTON - BETHEL  
 Proj. F. no. 164 (3)  
 Sheet 12 of 92



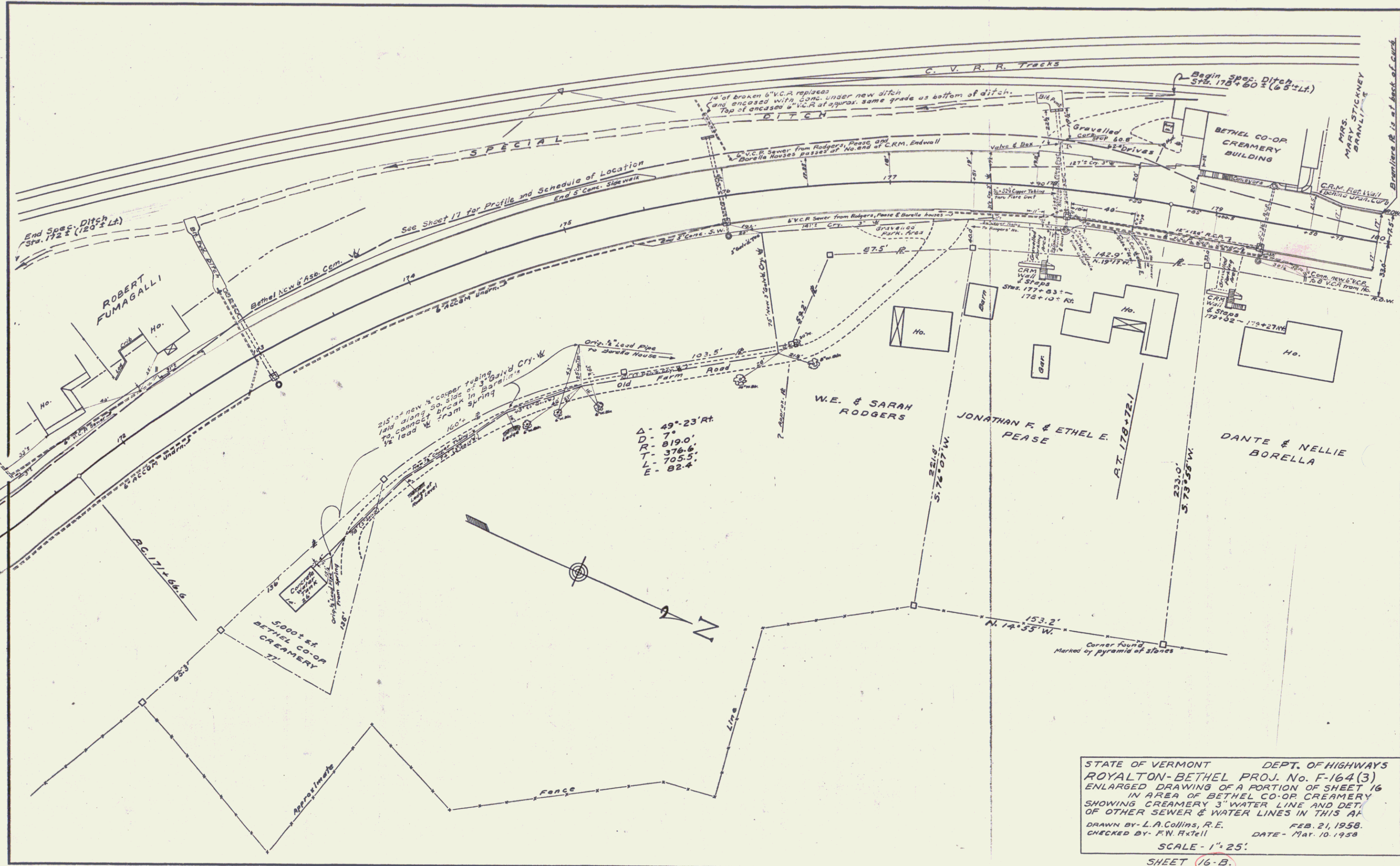


POOR ORIGINAL COPY

POOR ORIGINAL COPY

SCALE 1" = 500'  
 STATE OF VERMONT  
 DEPT. OF LANDS & FORESTRY  
 ROYALTON - EASTMAN OFFICE  
 No. 17-100-301  
 DRAWING AND MAP  
 LOCATION OF BOUNDARY LINE TO  
 AS SET WITHIN MAPLET 18  
 DRAWN BY L.A. COMPTON ET AL  
 CHECKED BY G.E. BROWN ET AL  
 SHEET 10A

SHEET 10A



STATE OF VERMONT DEPT. OF HIGHWAYS  
 ROYALTON-BETHEL PROJ. No. F-164(3)  
 ENLARGED DRAWING OF A PORTION OF SHEET 16  
 IN AREA OF BETHEL CO-OP CREAMERY  
 SHOWING CREAMERY 3" WATER LINE AND DET.  
 OF OTHER SEWER & WATER LINES IN THIS AREA  
 DRAWN BY - L. A. Collins, R.E. FEB. 21, 1958.  
 CHECKED BY - F. W. Hxtell DATE - Mar. 10, 1958  
 SCALE - 1" = 25'  
 SHEET 16-B.

REMOVAL & DISPOSAL OF  
 EXISTING GUARD RAIL  
 180+50-181+00

GRANITE CURB #303  
 180+00-180+38.11 180+00-181+00 RL  
 180+38-181+00 RL  
 181+00-181+40

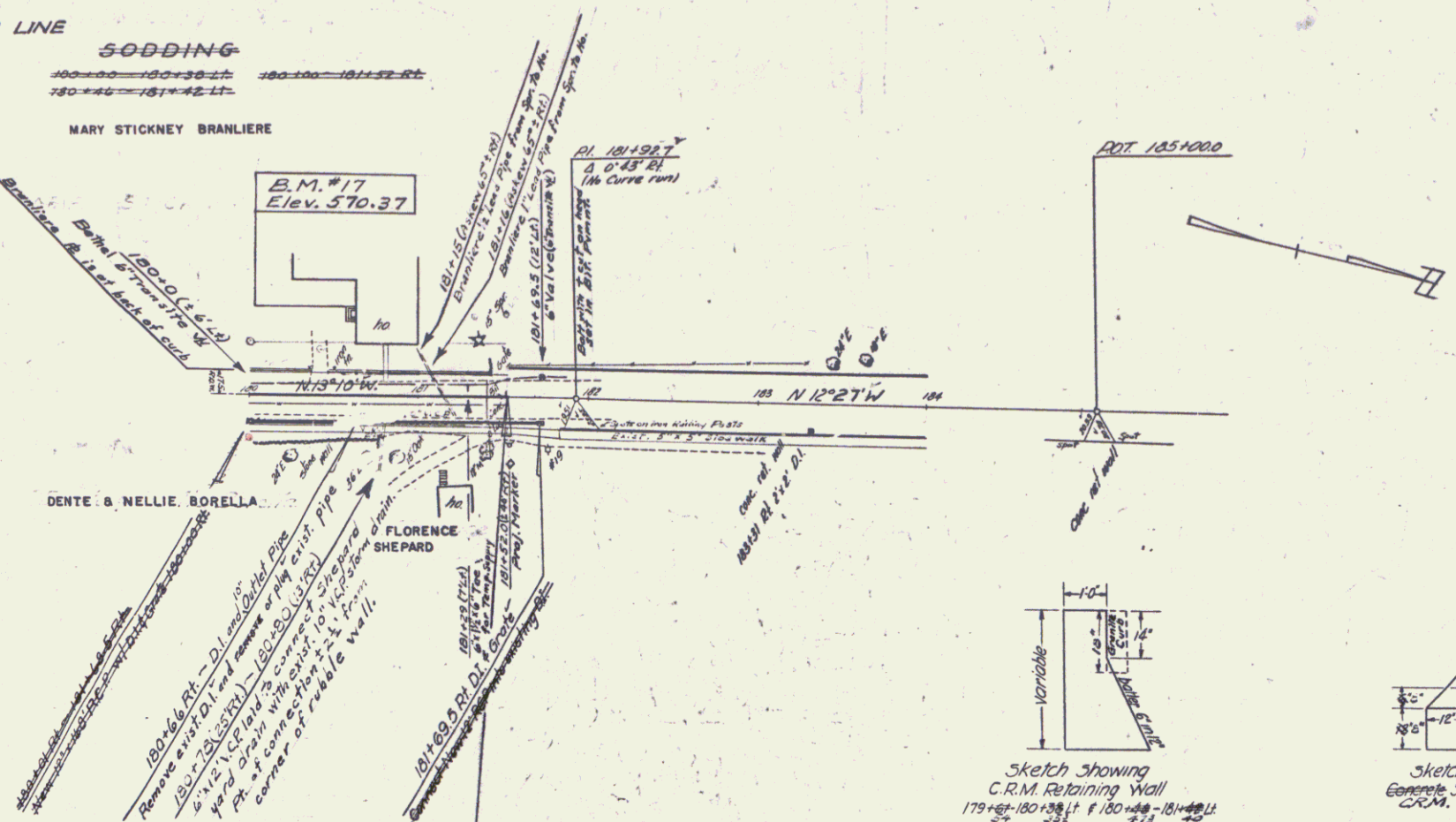
ONE COURSE CEMENT CONCRETE SIDEWALK  
 180+00-181+58.00 RL

CONSTRUCT DRIVES  
 180+42 LF  
 181+00 LF  
 181+77 LF

LOCATION OF  
 BETHEL 6" ASBESTOS-CEMENT WATER LINE

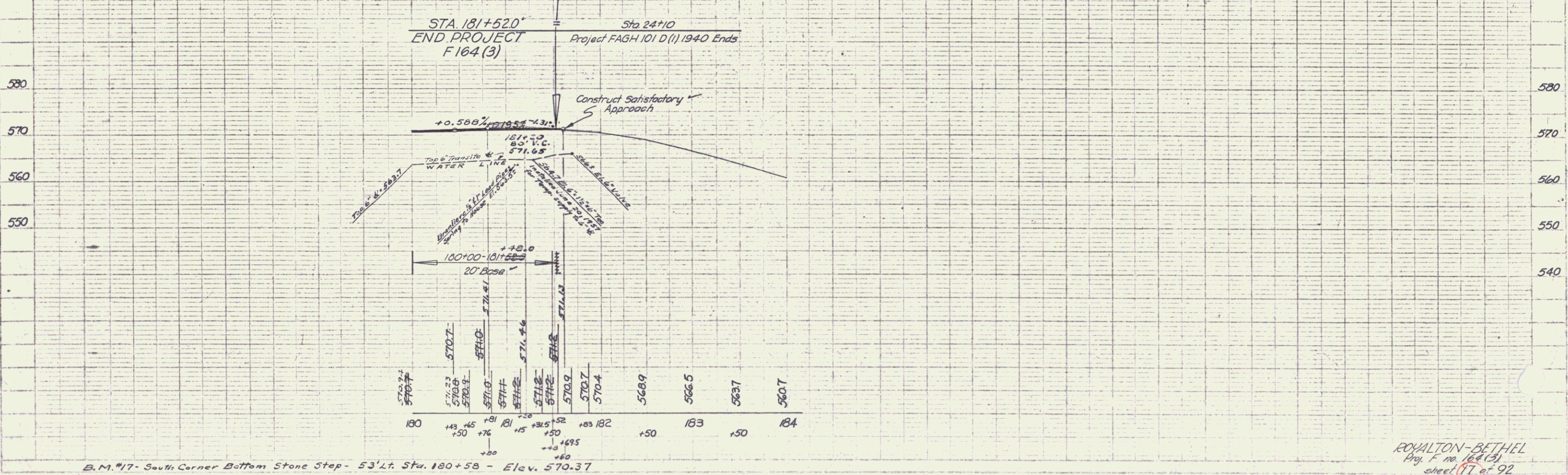
NOTES	DIST. LT. OF 6"	ROADWAY STAC.
6" Valve in Line	12'	181+69.5
Bend RT.	10'	181+52
6" Trans. Pipe (6-20-57)	7 1/2'	181+40
for Temp. supply to 6" Line	7'	181+29
	6 1/2'	181+0
	6'	180+0
(W. of S.E. Corn. of Cr.)	16'	178+85
Tree and Hydrant So. of Creamery	25'	178+60.5
	30'	178+50
	30'	178+0
	30'	177+50
	27 1/2'	177+0
	26'	176+50
	25 1/2'	176+0
	25'	175+50
	23'	175+0
	20'	174+0
	23 1/2'	173+0
	19'	172+50
	16 1/2'	172+0
	15 1/2'	171+50
	15'	171+0
Tree & Hydrant	18'	170+50
170+12	19 1/2'	170+0
	18 1/2'	169+50
	20'	169+0
	21 1/4'	168+50
	23 1/4'	168+0
	22 1/2'	167+50
	23 1/2'	167+0
	27'	166+50
	26 1/2'	166+0
	23'	165+50
	21 1/2'	165+0
	20'	164+50
	19'	164+0
Tree & Hydrant	20'	163+50
6" Valve & Tree Plugged for End of W.	162+43.3	

NOTE: Centerline of Roadway is constant 17 ft. from face of right (North) curb. See Profile below for elevs. of top of 6" Trans. pipe.



Sketch Showing C.R.M. Retaining Wall  
 179+68-180+38.11 & 180+48-181+00 RL

Sketch Showing Concrete Steps  
 180+75-181+00 RL



B.M. #17 - South Corner Bottom Stone Step - 53' Lt. Sta. 180+58 - Elev. 570.37