

# 5 CARL J. STOWE  
 (A O 432) STA 120+44-126+45.2  
 COND 11/25/55  
 RECORDED-ROYALTON-BK 5-PG 60/63-12/2/55

CONSTRUCT DRIVES THREE CABLE GUARD RAIL W/STEEL POSTS  
 123+90.5 LI 123+50 RT 133+00-136+00 LI  
 125+00 RT 122+15 RT  
 127+98.7 LI 125+25 RT  
 128+00 RT  
 # 8 HALA M. BENEDICT  
 (A O 552) STA 126+38-127+50.2  
 COND 11/25/55  
 RECORDED-ROYALTON-BK 5-PG 60/63-12/2/55  
 129+00 LI 132+65 RT  
 129+54.5 LI  
 133+80 RT  
 126+88 RT  
 130+15 LI  
 131+70 RT

Δ 35° 57' Lt  
 D 6"  
 R 955.4'  
 T 310.0'  
 L 599.2'  
 E 49.0'  
 Bank 48' 2" H

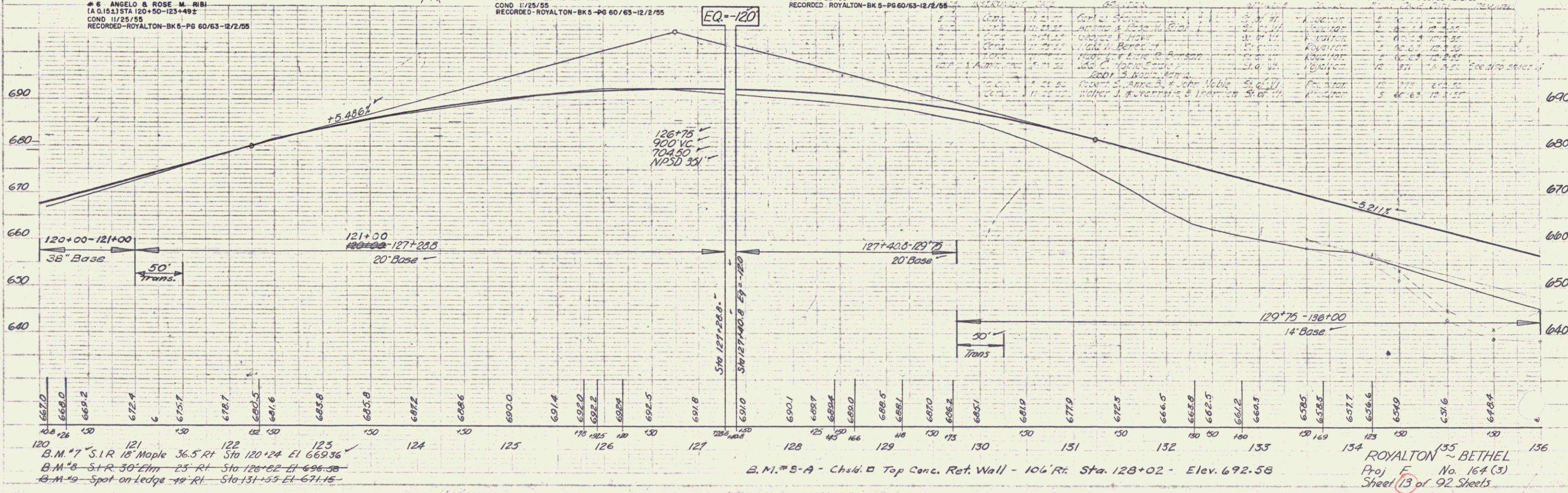
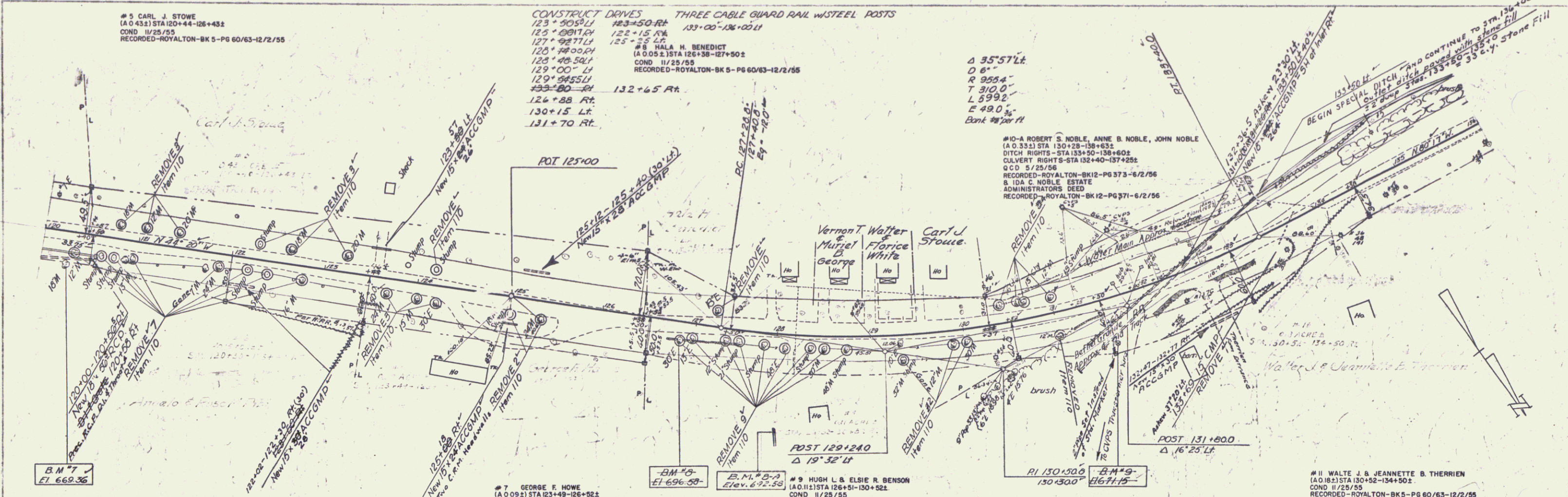
# 10-A ROBERT S. NOBLE, ANNE B. NOBLE, JOHN NOBLE  
 (A O 332) STA 130+28-136+03.2  
 DITCH RIGHTS-STA 133+50-136+02  
 CULVERT RIGHTS-STA 132+40-137+25  
 Q.C.D. 5/29/56  
 RECORDED-ROYALTON-BK 12-PG 373-6/2/56  
 B. I.D.A. C. NOBLE ESTATE  
 ADMINISTRATORS DEED  
 RECORDED-ROYALTON-BK 12-PG 371-6/2/56

# 11 WALTER J. & JEANNETTE B. THERRIEN  
 (A O 182) STA 130+52-134+50.2  
 COND 11/25/55  
 RECORDED-ROYALTON-BK 5-PG 60/63-12/2/55

# 6 ANGELO & ROSE M. RIBI  
 (A O 152) STA 120+50-123+49.2  
 COND 11/25/55  
 RECORDED-ROYALTON-BK 5-PG 60/63-12/2/55

# 7 GEORGE F. HOWE  
 (A O 092) STA 123+49-126+52.1  
 COND 11/25/55  
 RECORDED-ROYALTON-BK 5-PG 60/63-12/2/55

# 9 HUGH L. & ELSIE R. BENSON  
 (A O 112) STA 126+51-130+52.1  
 COND 11/25/55  
 RECORDED-ROYALTON-BK 5-PG 60/63-12/2/55



PLAN  
 DATE  
 DRAWN BY  
 CHECKED BY  
 SCALE

Profile  
 DATE  
 DRAWN BY  
 CHECKED BY  
 SCALE

120 B.M. # 7 S.I.R. 18 Maple 36.5 Rt. Sta 120+24 El 669.36  
 121 B.M. # 8 S+R 50 Elm 25 Rt Sta 126+82 El 696.38  
 122 B.M. # 9 Spot on ledge 19 Rt Sta 131+55 El 671.15

B.M. # 8-A - Chalk Top Conc. Ref. Wall - 106' Rt. Sta. 128+02 - Elev. 692.58

ROYALTON - BETHEL  
 Proj. No. 164 (3)  
 Sheet 13 of 92 Sheets