

SHEET NO.	TITLE PAGE
1	TITLE PAGE
2, 3, 4	TYPICAL CROSS-SECTION OF IMPROVEMENT
5, 6, 7	PLAN & PROFILE
8, 9	DRAINAGE DETAILS - PLAN & PROFILE
10	DETAILS OF GRAVITY WALL
10A	DETAILS OF PIPE RAIL
11	DETAILS OF CONCRETE BEAMS
12, 13, 14	DETAILS OF BRIDGE ABUTMENTS & STEEL SUPERSTRUCTURE
15	STD. STRUCTURE SHEET S.B.-11. BARRICADES, SIGNS, & LIGHTS (BR.)
16	" " " " S.B.-20. BRIDGE DETAILS 'C', 'E', 'F', & 'Gen. Notes'
17	" " " " S-28. PIPE CULVERTS.
18	" " " " S-30. C&M WALL, WOOD GUARD RAIL.
19	" " " " S-30A. BRICK CATCH BASINS, STD. UNDERDRAIN.
20	" " " " CONC. PAVES, CONC. CURBS & GUTTERS, CONC. S. L.M.M.
21	" " " " S-33. 7" CHD COURSE GEN. CONC. PAVT.
22	" " " " S-40. BARRICADES, SIGNS & LIGHTS (ROAD)
23-32	CROSS SECTION SHEETS.
33	Plan of false work (Not Erected by Contractor)

STANDARD STRUCTURE SHEETS,  
APPROVED BY THE CHIEF ENGINEER:  
S-28 July 11, 1933.  
S-30 Aug 15, 1934.  
S-31 July 23, 1934.

LIST OF SHEETS SHOWING LOCATIONS  
OF PLACING SURPLUS MATERIAL:  
SHEET No. 34-35 Layout  
" " 36 Detail Sheet for 4x6' Box  
" " 37-43 Cross Section Sheets.

STATE OF VERMONT  
STATE HIGHWAY DEPARTMENT

PLAN AND PROFILE OF PROPOSED  
STATE HIGHWAY

F. A. G. H. PROJECT  
101-D(1)

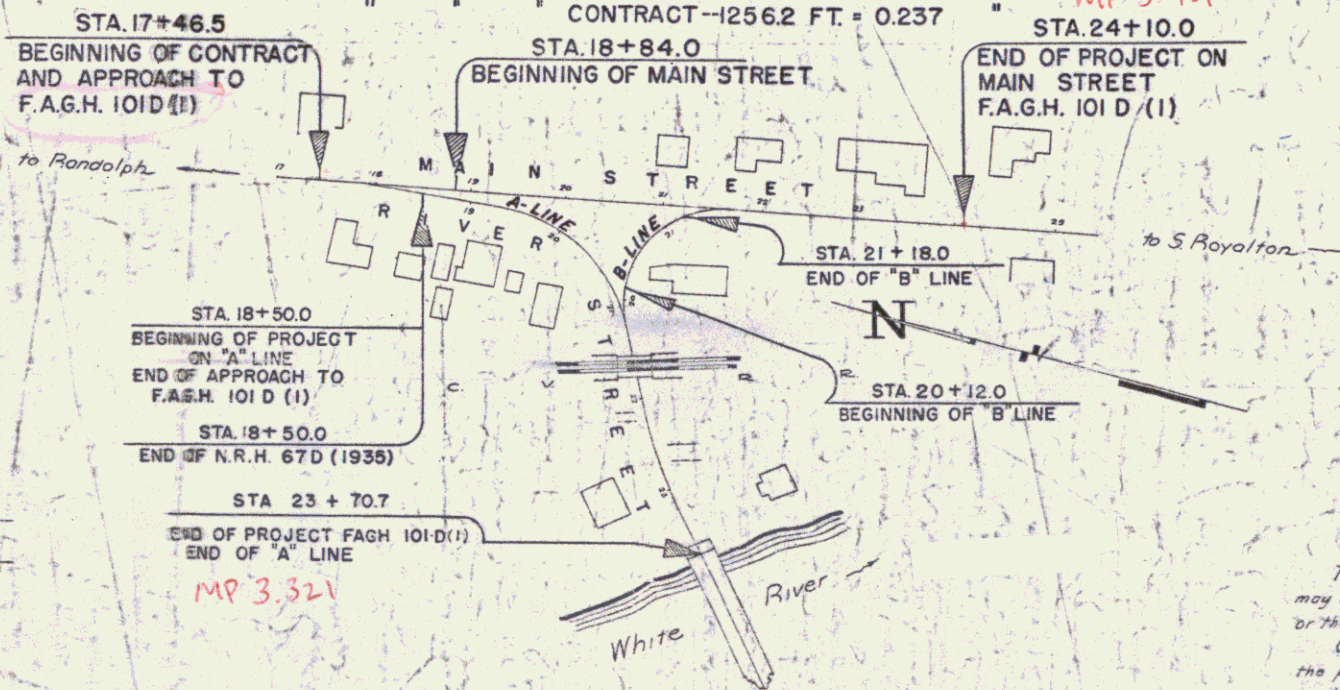
TOWN OF BETHEL

BETHEL-STOCKBRIDGE ROAD

UNDERPASS AND APPROACHES AT THE  
INTERSECTION OF ROUTES 12 AND 107

BEGINNING ON MAIN STREET AT A POINT 1758.5 FEET SOUTH OF ITS INTERSECTION WITH CHURCH STREET AND EXTENDING SOUTH-WESTERLY ALONG RIVER STREET TO THE WHITE RIVER BRIDGE  
ALSO EXTENDING SOUTHERLY 526.0 FT. ON MAIN STREET.

LENGTH OF MAIN ST. ----- 526.0 FT.  
" A-LINE ----- 520.7 FT.  
" B-LINE ----- 106.0 FT.  
TOTAL LENGTH OF PROJECT --1152.7 FT. = 0.218 MILES. MP 3.451  
" CONTRACT --1256.2 FT. = 0.237 " STA. 24+10.0



CONVENTIONAL SIGNS

- COUNTY LINE
- TOWN LINE
- FENCE LINE
- STONE WALL
- UNFENCED PROPERTY
- GUARD RAIL
- TRAVELED WAY
- RAILROAD
- RETAINING WALL
- CENTER LINE
- SURVEY LINE
- CULVERT
- DROP INLET
- TROLLEY POLE
- POWER POLE
- TELEPHONE POLE
- TREES
- HEDGE

GROUND ELEVATION. DATUM \_\_\_\_\_

GRADE ELEVATION. DATUM \_\_\_\_\_

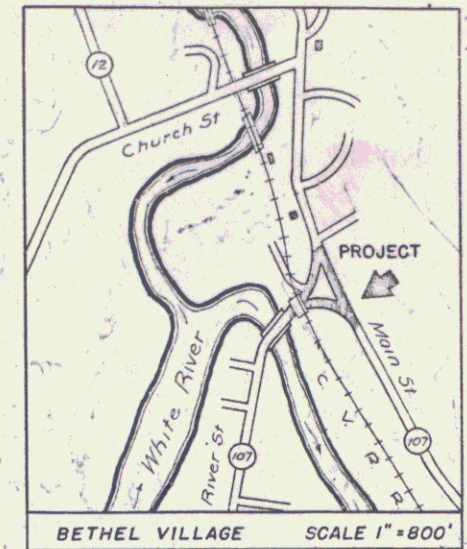
CURVE DATA

- DEFLECTION ANGLE. Δ
- DEGREE OF CURVE. D.
- RADIUS OF CURVE. R.
- TANGENT DISTANCE. T.
- LENGTH OF CURVE. L.
- EXTERNAL DISTANCE. E.
- POINT OF INTERSECTION. P.I.
- POINT OF CURVE. P.C.
- POINT OF TANGENT. P.T.
- POINT ON TANGENT. P.O.T.

S C A L E S

- TITLE 1" = 100'
- TYPICAL 1" = 2'
- PLAN 1" = 20'
- PROFILE HORIZ. 1" = 20'
- VERT. 1" = 10'
- CROSS-SECTIONS 1" = 5'
- DRAINAGE LAYOUT 1" = 25'

FED. ROAD DIST. NO.	STATE	ROAD PROJ. NO.	FISCAL YEAR	SHEET NO.	TOTAL SHEETS
9	Vt.	101-D(1)	1935	2	43



RIGHT-OF-WAY DIVISION  
TOWN FILE  
PERPETUAL  
Town of Bethel  
(To Be Returned To R.O.W. Division)

APPROVED: *[Signature]*  
CHIEF ENGINEER  
CENTRAL VERMONT RAILWAY INC.

APPROVED: *[Signature]*  
OCT 2 1934  
COMMISSIONER OF HIGHWAYS

SUBMITTED BY ORDER OF THE STATE HIGHWAY BOARD  
Pin # 009015  
Route VT 107  
Date 9/22/1934

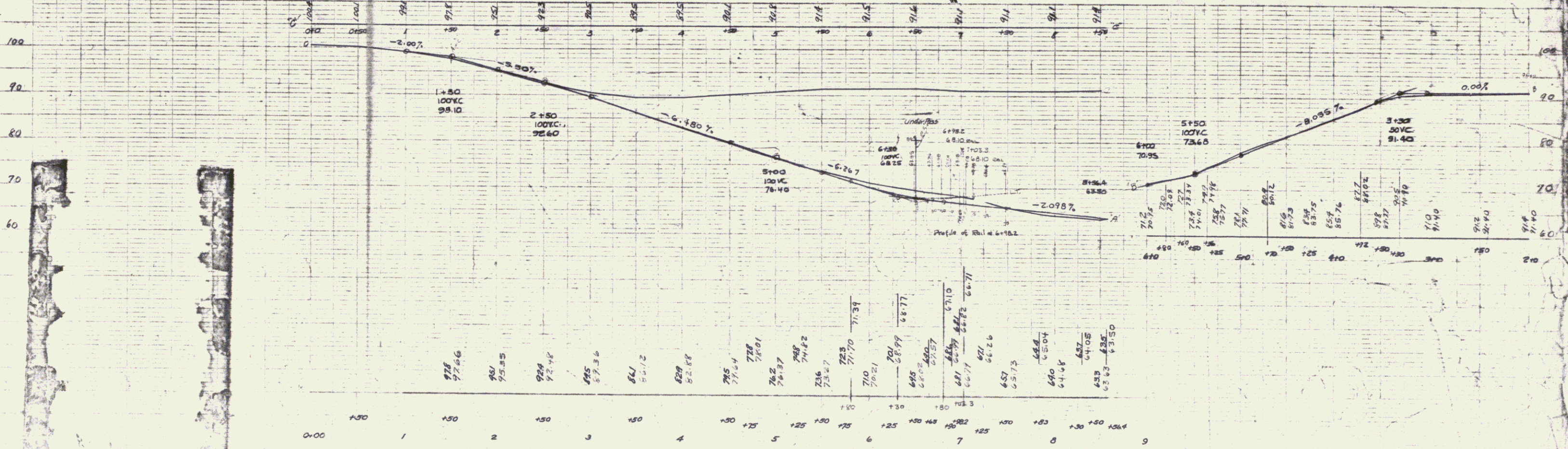
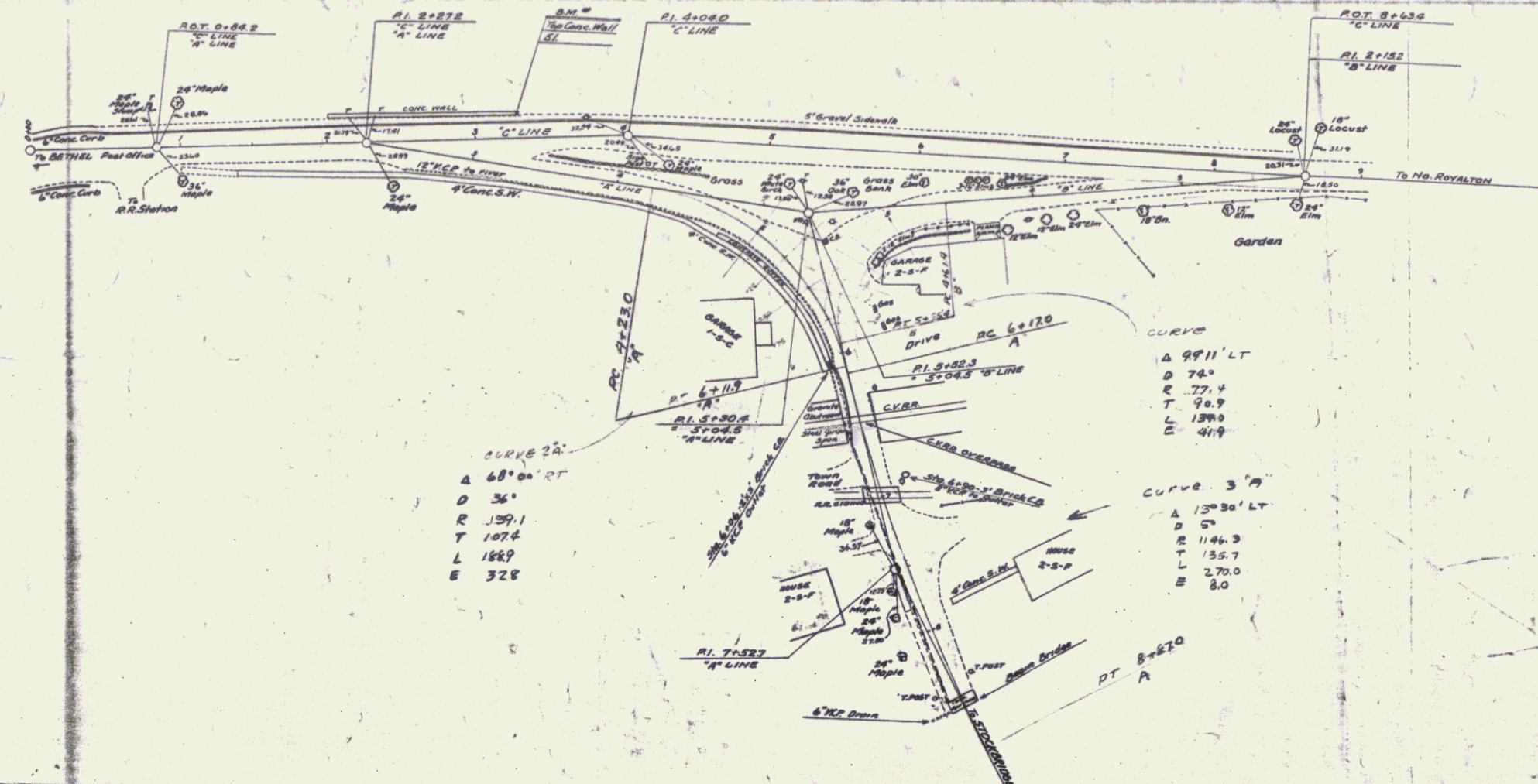
These plans are subject to such revisions as may be required by the Public Roads Administration or the Commissioner of Highways.  
Construction is to be carried on in accordance with the plans and the Standard Road and Bridge Specifications of 1936, as approved December 29th, 1936, by the Public Roads Administration, including all subsequent approved revisions and such revised specifications and special provisions as are submitted with the plans.

APPROVED *[Signature]* 9-22-1934 BRIDGE ENGINEER  
APPROVED *[Signature]* 9-22-1934 DISTRICT HIGHWAY COMMISSIONER  
APPROVED *[Signature]* 9-22-1934 ROAD ENGINEER

RECOMMENDED FOR APPROVAL  
DISTRICT ENGINEER  
PUBLIC ROADS ADMINISTRATION  
FEDERAL WORKS AGENCY  
APPROVED  
COMMISSIONER OF HIGHWAYS  
PUBLIC ROADS ADMINISTRATION  
FEDERAL WORKS AGENCY  
SERIES F.A.G.H. NO. 101-D(1) REED  
SHEET (1) OF 43

P. H. BUCKLEY  
 CIVIL ENGINEER  
 1000 N. 1st St.  
 ST. LOUIS, MO.  
 1917

BUCKLEY



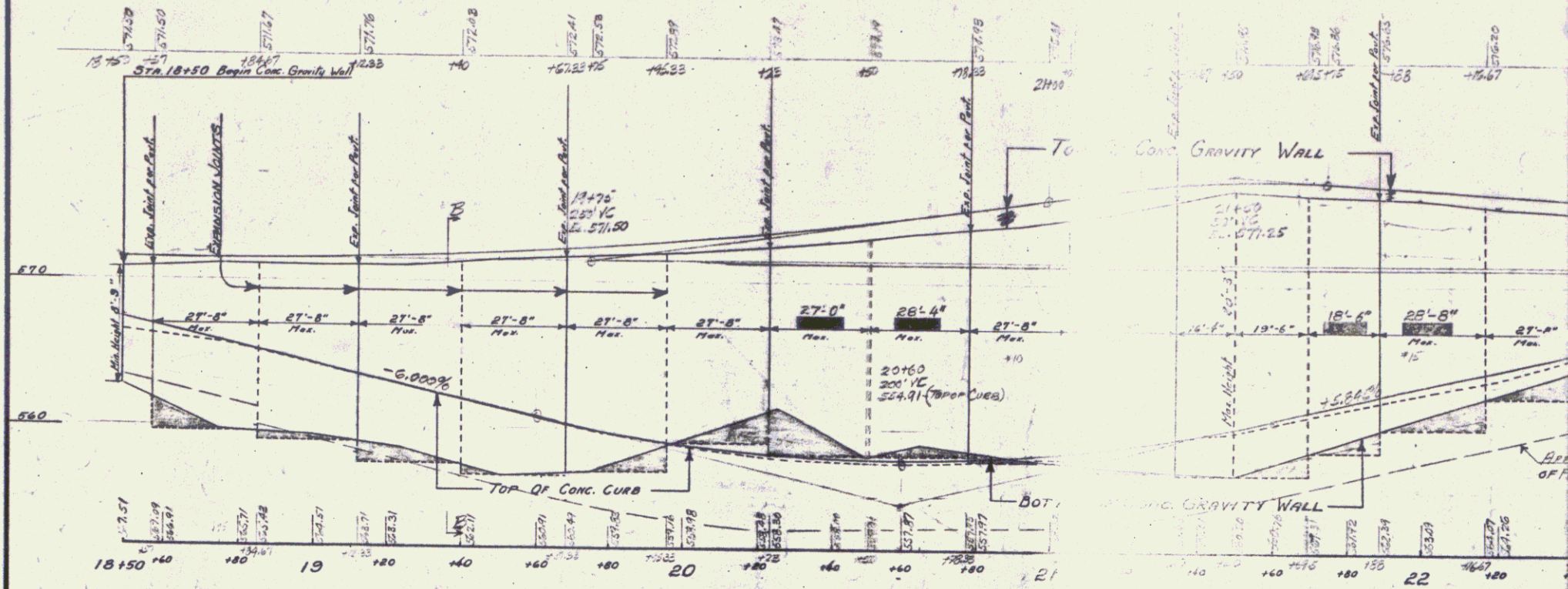
SHEET 2

2





# DETAILS OF CONG. GRAVITY

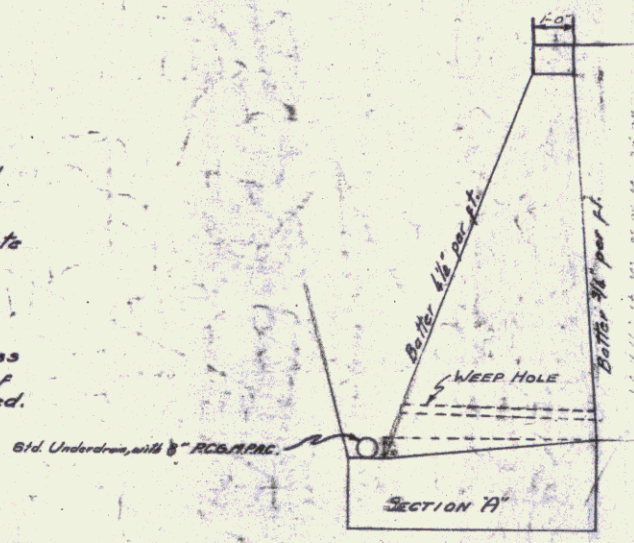


Alternate expansion joints designed to match road joints.

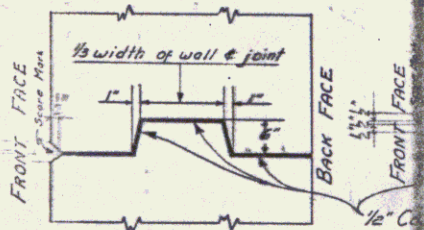
Above wall is to be poured in alternate sections.

Rock foundation to be cut in steps as shown on profile by shaded area. This area to be poured with Conc. Class C, to the true grade of bottom of wall, before main wall is constructed.

Weep holes in Conc. Retaining Wall to consist of 4" pipe with a slope of 1/8" per ft. and spaced 1'bt apart from center. Weep holes to be included in bid price per Conc. Class C.



Section 19 to be poured to match bottom of wall on grade before the retaining wall is poured.

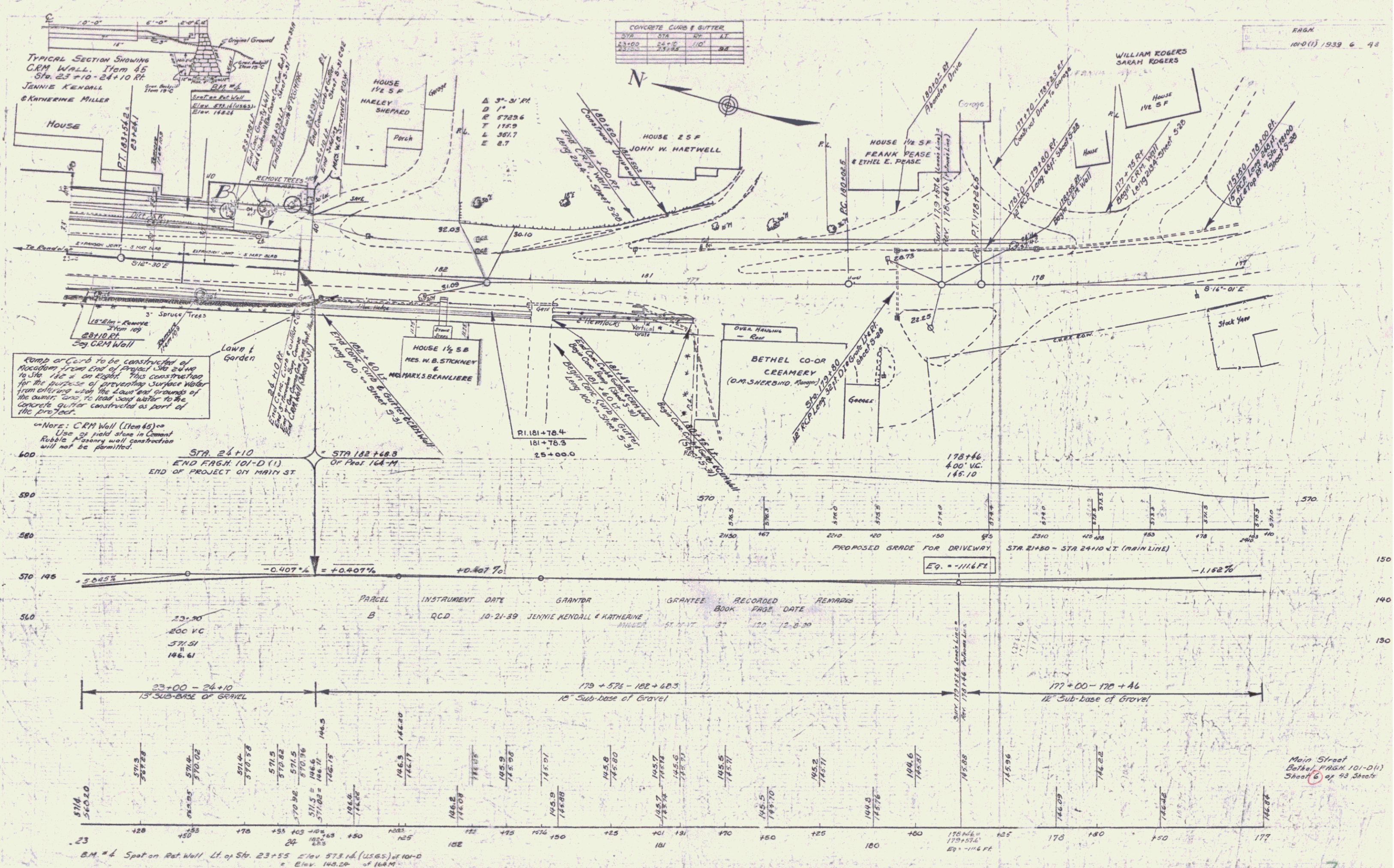


DETAIL No. 1  
Detail No. 1 to apply from bottom 6 ft. down from top of wing. Do not use from this point to top of wall.

DETAIL OF VERTICAL EXP.

POOR ORIGINAL COPY





CONCRETE CURB & GUTTER

STA	CV	GT
23+50	24+00	24
23+50	23+50	24

FRAG 101-D(1) 1939 6 43

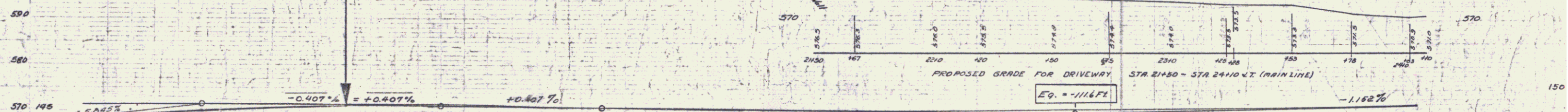
TYPICAL SECTION SHOWING CURB WALL. Item 45 STA. 23+10-24+10 R/L JENNIE KENDALL & KATHERINE MILLER

Ramp or Curb to be constructed of Macadam from end of project to end of Main St. This construction for the purpose of preventing surface water from entering with the lower end grounds of the owner, and to lead said water to the concrete gutter constructed as part of the project.

NOTE: CRM Wall (Item 45) Use of field stone in concrete Rubble Masonry wall construction will not be permitted.

STA 24+10 END FRAG. 101-D(1) END OF PROJECT ON MAIN ST

STA 182+68.3 OF Proj 164-M



PARCEL	INSTRUMENT	DATE	GRANTOR	GRANTEE	RECORDED BOOK	RECORDED PAGE	RECORDED DATE	REMARKS
B	QCD	10-21-39	JENNIE KENDALL & KATHERINE MILLER	ANNE... ..	51	17	12-8-39	

STATION	ELEVATION
23+00	571.5
23+10	570.02
23+20	571.5
23+30	570.76
23+40	571.5
23+50	571.02
23+60	570.76
23+70	571.5
23+80	570.76
23+90	571.5
24+00	570.76
24+10	571.5
24+20	570.76
24+30	571.5
24+40	570.76
24+50	571.5
24+60	570.76
24+70	571.5
24+80	570.76
24+90	571.5
25+00	570.76
25+10	571.5
25+20	570.76
25+30	571.5
25+40	570.76
25+50	571.5
25+60	570.76
25+70	571.5
25+80	570.76
25+90	571.5
26+00	570.76
26+10	571.5
26+20	570.76
26+30	571.5
26+40	570.76
26+50	571.5
26+60	570.76
26+70	571.5
26+80	570.76
26+90	571.5
27+00	570.76
27+10	571.5
27+20	570.76
27+30	571.5
27+40	570.76
27+50	571.5
27+60	570.76
27+70	571.5
27+80	570.76
27+90	571.5
28+00	570.76
28+10	571.5
28+20	570.76
28+30	571.5
28+40	570.76
28+50	571.5
28+60	570.76
28+70	571.5
28+80	570.76
28+90	571.5
29+00	570.76
29+10	571.5
29+20	570.76
29+30	571.5
29+40	570.76
29+50	571.5
29+60	570.76
29+70	571.5
29+80	570.76
29+90	571.5
30+00	570.76
30+10	571.5
30+20	570.76
30+30	571.5
30+40	570.76
30+50	571.5
30+60	570.76
30+70	571.5
30+80	570.76
30+90	571.5
31+00	570.76
31+10	571.5
31+20	570.76
31+30	571.5
31+40	570.76
31+50	571.5
31+60	570.76
31+70	571.5
31+80	570.76
31+90	571.5
32+00	570.76
32+10	571.5
32+20	570.76
32+30	571.5
32+40	570.76
32+50	571.5
32+60	570.76
32+70	571.5
32+80	570.76
32+90	571.5
33+00	570.76
33+10	571.5
33+20	570.76
33+30	571.5
33+40	570.76
33+50	571.5
33+60	570.76
33+70	571.5
33+80	570.76
33+90	571.5
34+00	570.76
34+10	571.5
34+20	570.76
34+30	571.5
34+40	570.76
34+50	571.5
34+60	570.76
34+70	571.5
34+80	570.76
34+90	571.5
35+00	570.76
35+10	571.5
35+20	570.76
35+30	571.5
35+40	570.76
35+50	571.5
35+60	570.76
35+70	571.5
35+80	570.76
35+90	571.5
36+00	570.76
36+10	571.5
36+20	570.76
36+30	571.5
36+40	570.76
36+50	571.5
36+60	570.76
36+70	571.5
36+80	570.76
36+90	571.5
37+00	570.76
37+10	571.5
37+20	570.76
37+30	571.5
37+40	570.76
37+50	571.5
37+60	570.76
37+70	571.5
37+80	570.76
37+90	571.5
38+00	570.76
38+10	571.5
38+20	570.76
38+30	571.5
38+40	570.76
38+50	571.5
38+60	570.76
38+70	571.5
38+80	570.76
38+90	571.5
39+00	570.76
39+10	571.5
39+20	570.76
39+30	571.5
39+40	570.76
39+50	571.5
39+60	570.76
39+70	571.5
39+80	570.76
39+90	571.5
40+00	570.76
40+10	571.5
40+20	570.76
40+30	571.5
40+40	570.76
40+50	571.5
40+60	570.76
40+70	571.5
40+80	570.76
40+90	571.5
41+00	570.76
41+10	571.5
41+20	570.76
41+30	571.5
41+40	570.76
41+50	571.5
41+60	570.76
41+70	571.5
41+80	570.76
41+90	571.5
42+00	570.76
42+10	571.5
42+20	570.76
42+30	571.5
42+40	570.76
42+50	571.5
42+60	570.76
42+70	571.5
42+80	570.76
42+90	571.5
43+00	570.76
43+10	571.5
43+20	570.76
43+30	571.5
43+40	570.76
43+50	571.5
43+60	570.76
43+70	571.5
43+80	570.76
43+90	571.5
44+00	570.76
44+10	571.5
44+20	570.76
44+30	571.5
44+40	570.76
44+50	571.5
44+60	570.76
44+70	571.5
44+80	570.76
44+90	571.5
45+00	570.76
45+10	571.5
45+20	570.76
45+30	571.5
45+40	570.76
45+50	571.5
45+60	570.76
45+70	571.5
45+80	570.76
45+90	571.5
46+00	570.76
46+10	571.5
46+20	570.76
46+30	571.5
46+40	570.76
46+50	571.5
46+60	570.76
46+70	571.5
46+80	570.76
46+90	571.5
47+00	570.76
47+10	571.5
47+20	570.76
47+30	571.5
47+40	570.76
47+50	571.5
47+60	570.76
47+70	571.5
47+80	570.76
47+90	571.5
48+00	570.76
48+10	571.5
48+20	570.76
48+30	571.5
48+40	570.76
48+50	571.5
48+60	570.76
48+70	571.5
48+80	570.76
48+90	571.5
49+00	570.76
49+10	571.5
49+20	570.76
49+30	571.5
49+40	570.76
49+50	571.5
49+60	570.76
49+70	571.5
49+80	570.76
49+90	571.5
50+00	570.76
50+10	571.5
50+20	570.76
50+30	571.5
50+40	570.76
50+50	571.5
50+60	570.76
50+70	571.5
50+80	570.76
50+90	571.5
51+00	570.76
51+10	571.5
51+20	570.76
51+30	571.5
51+40	570.76
51+50	571.5
51+60	570.76
51+70	571.5
51+80	570.76
51+90	571.5
52+00	570.76
52+10	571.5
52+20	570.76
52+30	571.5
52+40	570.76
52+50	571.5
52+60	570.76
52+70	571.5
52+80	570.76
52+90	571.5
53+00	570.76
53+10	571.5
53+20	570.76
53+30	571.5
53+40	570.76
53+50	571.5
53+60	570.76
53+70	571.5
53+80	570.76
53+90	571.5
54+00	570.76
54+10	571.5
54+20	570.76
54+30	571.5
54+40	570.76
54+50	571.5
54+60	570.76
54+70	571.5
54+80	570.76
54+90	571.5
55+00	570.76
55+10	571.5
55+20	570.76
55+30	571.5
55+40	570.76
55+50	571.5
55+60	570.76
55+70	571.5
55+80	570.76
55+90	571.5
56+00	570.76
56+10	571.5
56+20	570.76
56+30	571.5
56+40	570.76
56+50	571.5
56+60	570.76
56+70	571.5
56+80	570.76
56+90	571.5
57+00	570.76
57+10	571.5
57+20	570.76
57+30	571.5
57+40	570.76
57+50	571.5
57+60	570.76
57+70	571.5
57+80	570.76
57+90	571.5
58+00	570.76
58+10	571.5
58+20	570.76
58+30	571.5
58+40	570.76
58+50	571.5
58+60	570.76
58+70	571.5
58+80	570.76
58+90	571.5
59+00	570.76
59+10	571.5
59+20	570.76
59+30	571.5
59+40	570.76
59+50	571.5
59+60	570.76
59+70	571.5
59+80	570.76
59+90	571.5
60+00	570.76
60+10	571.5
60+20	570.76
60+30	571.5
60+40	570.76
60+50	571.5
60+60	570.76
60+70	571.5
60+80	570.76
60+90	571.5
61+00	570.76
61+10	571.5
61+20	570.76
61+30	571.5
61+40	570.76
61+50	571.5
61+60	570.76
61+70	571.5
61+80	570.76
61+90	571.5
62+00	570.76
62+10	571.5
62+20	570.76
62+30	571.5
62+40	570.76
62+50	571.5
62+60	570.76
62+70	571.5
62+80	570.76
62+90	571.5
63+00	570.76
63+10	571.5
63+20	570.76
63+30	571.5
63+40	570.76
63+50	571.5
63+60	570.76
63+70	571.5
63+80	570.76
63+90	571.5
64+00	570.76
64+10	571.5
64+20	570.76
64+30	571.5
64+40	570.76
64+50	571.5
64+60	570.76
64+70	571.5
64+80	570.76
64+90	571.5
65+00	570.76
65+10	571.5
65+20	570.76
65+30	571.5
65+40	570.76
65+50	571.5
65+60	570.76
65+70	571.5
65+80	570.76
65+90	571.5
66+00	570.76
66+10	571.5
66+20	570.76
66+30	571.5
66+40	570.76
66+50	571.5

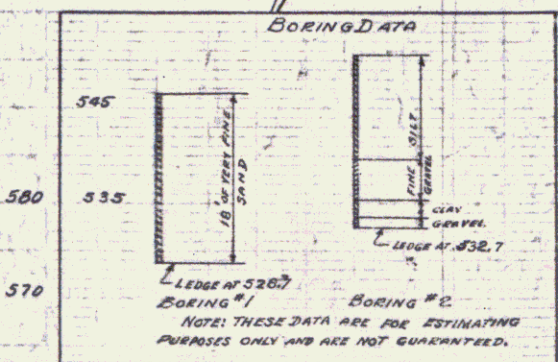
STA.	E.P.	L.T.	R.T.
21128.6	211.21	71.6	
22122.5	212.16	12.5	
22149	213.71	12.2	

STA.	E.P.	L.T.	R.T.
21128.6	211.21	108.9	71.6
22140	212.45	RT	
21120	211.91	71	
22122.5	212.16	12.5	
22149	213.71	12.2	

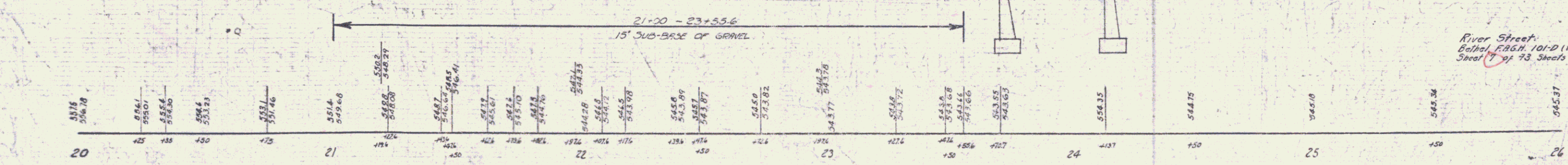
Sta.	E.P.	L.T.	R.T.
21128.6	211.21	71.6	
22122.5	212.16	12.5	
22149	213.71	12.2	

"B" line P.I. 20+290 = 19+620

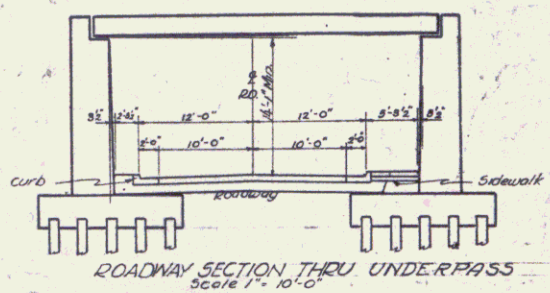
"A" line P.I. 20+378 = 20+11.4



A-LINE  
-7.101%



FOR DRAINAGE, SEE SHEETS 8 & 9



LIST OF SHEETS FOR OVERPASS

- SHEET 7 PLAN & PROFILE
- SHEET 14 GEN'L LAYOUT & SUPERSTRUCTURE DETAILS
- SHEETS 15 & 16 DETAILS OF ABUTMENTS
- SHEET 33 PLAN for Falsework (Not Erected by Contractor)

QUANTITIES FOR UNDERPASS

- ITEM 16 STRUCTURE EXCAVATION 1340 cu yd
- 41A CONCRETE CLASS PA 436 cu yd
- 42 REINFORCING STEEL 25400 lb
- 43B STEEL SUPERSTRUCTURE (GROSS) 11.1
- 65B TIMBER PILING (CREOSOTED) 2464 L
- 64B STRUCTURAL TIMBER 10 MB

River Street  
Bathel F.A.G.H. 101-D(1)  
Sheet 7 of 73 Sheets

POOR ORIGINAL COPY

WHITE RIVER



DO NOT BANK OR WIDEN

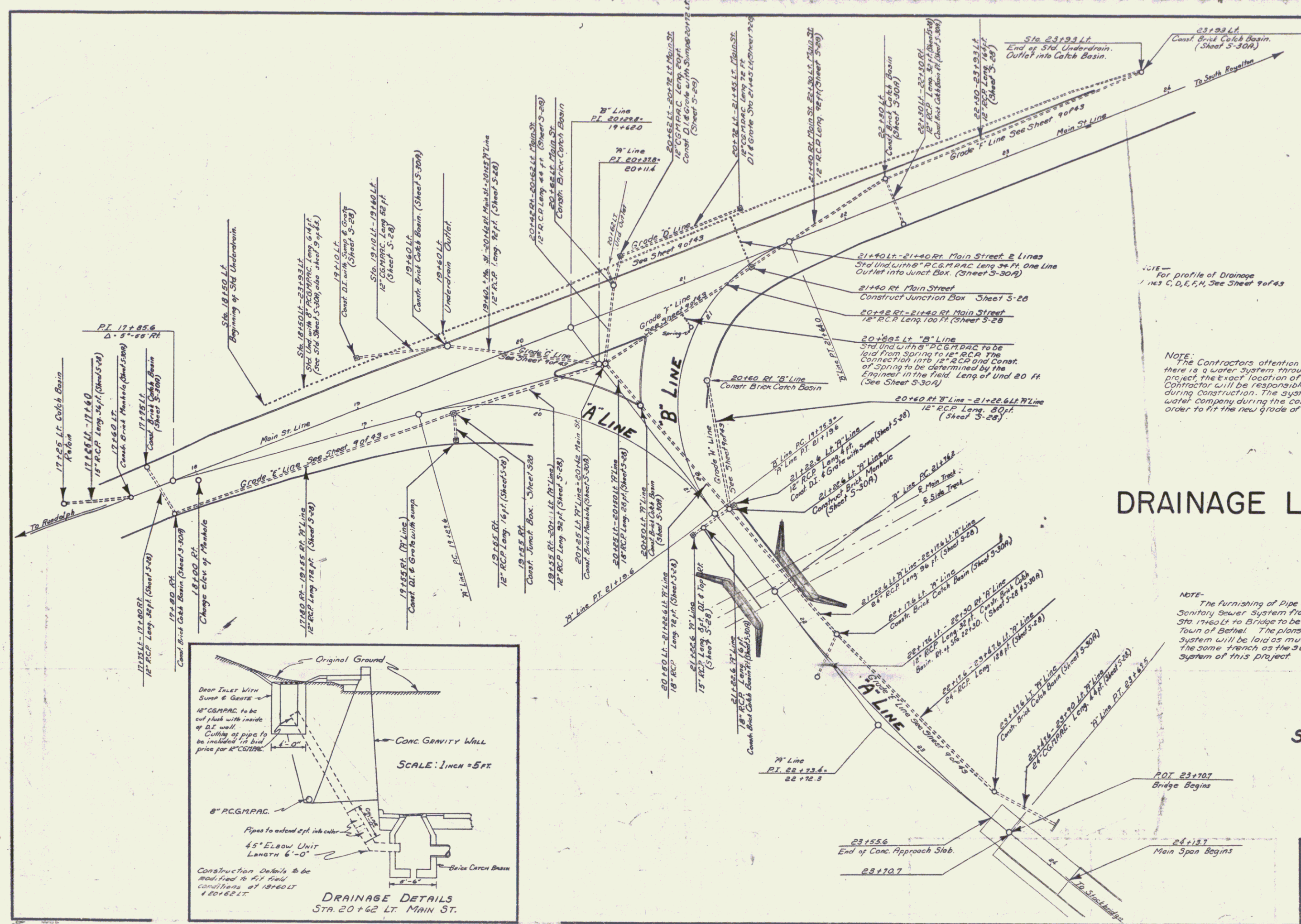
$\Delta = 32' 11''$   
 $\Delta = 17' 30''$   
 $\Delta = 94' 5''$   
 $\Delta = 100' 4''$   
 $\Delta = 32' 4''$

$\Delta = 14' 00''$   
 $\Delta = 8'$   
 $\Delta = 117' 8''$   
 $\Delta = 2' 10''$

SHEET 7A

9

Notes 12 and 107 Water St. Bridge Rethel.



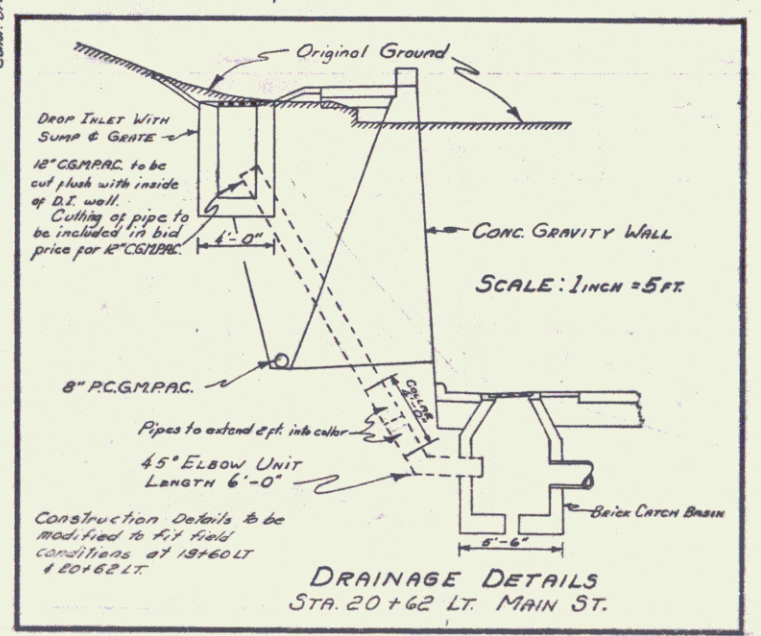
NOTE: For profile of Drainage Lines C, D, E, F, See Sheet 9 of 43

NOTE: The Contractor's attention is called to the fact that there is a water system throughout the length of project, the exact location of pipes not being known. Contractor will be responsible for damage to this system during construction. The system will be tested by the water company during the construction of project in order to fit the new grade of the road.

# DRAINAGE LAYOUT

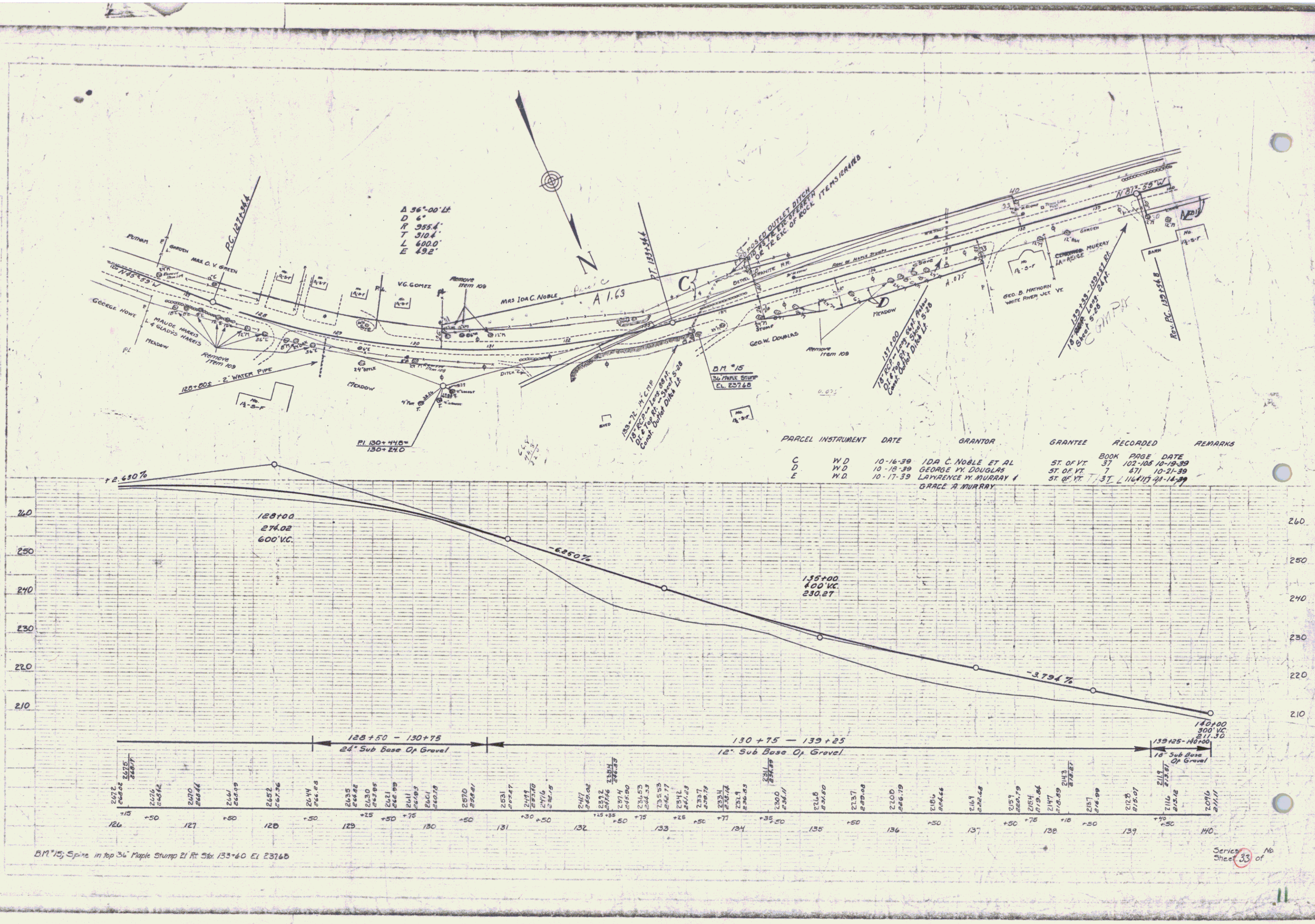
NOTE: The furnishing of Pipe and laying of Sanitary Sewer System from the manhole of Sta. 19+60.00 to Bridge to be carried out by the Town of Bethel. The plans are that this system will be laid as much as possible in the same trench as the surface water system of this project.

SCALE: 1 INCH = 25 FT.



BETHEL FRGH 101-D(1)

Surveyed by A.D. WOOD  
 Designed by A.J. RUNNALS  
 Drawn by E.J. BRUNELLE  
 Traced by  
 Checked by  
 Series FRGH No. 101-D(1) Filed  
 Sheet 3 of 43 Sheets

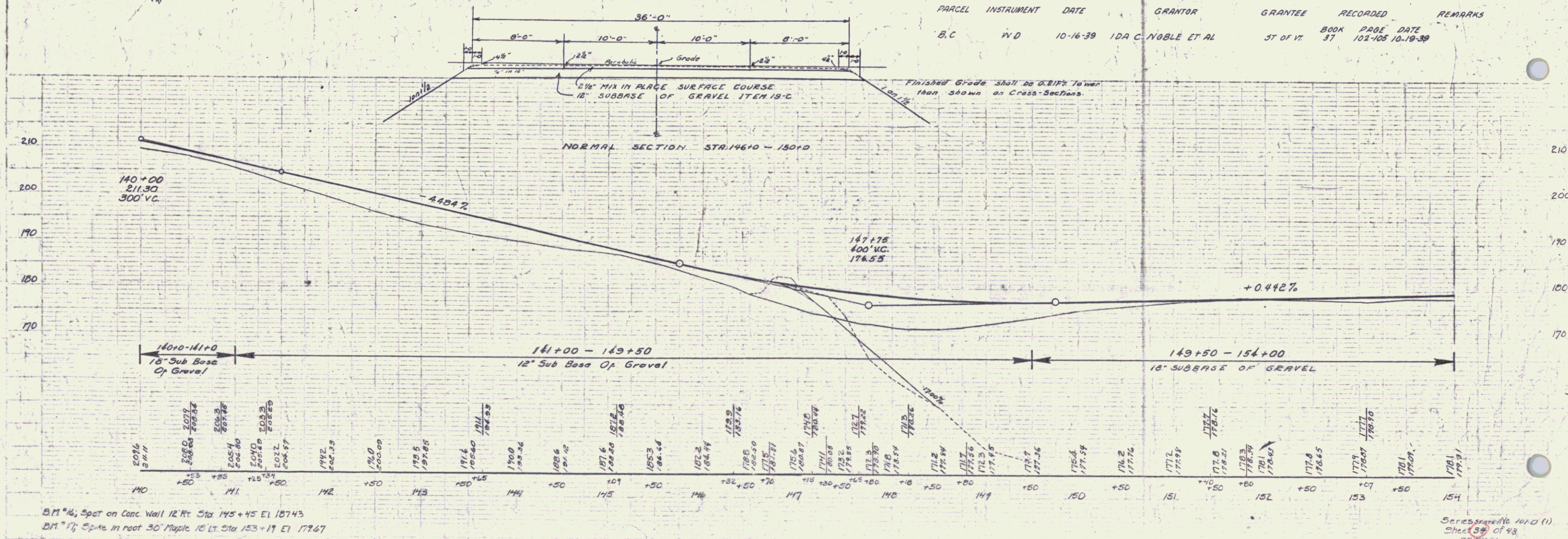
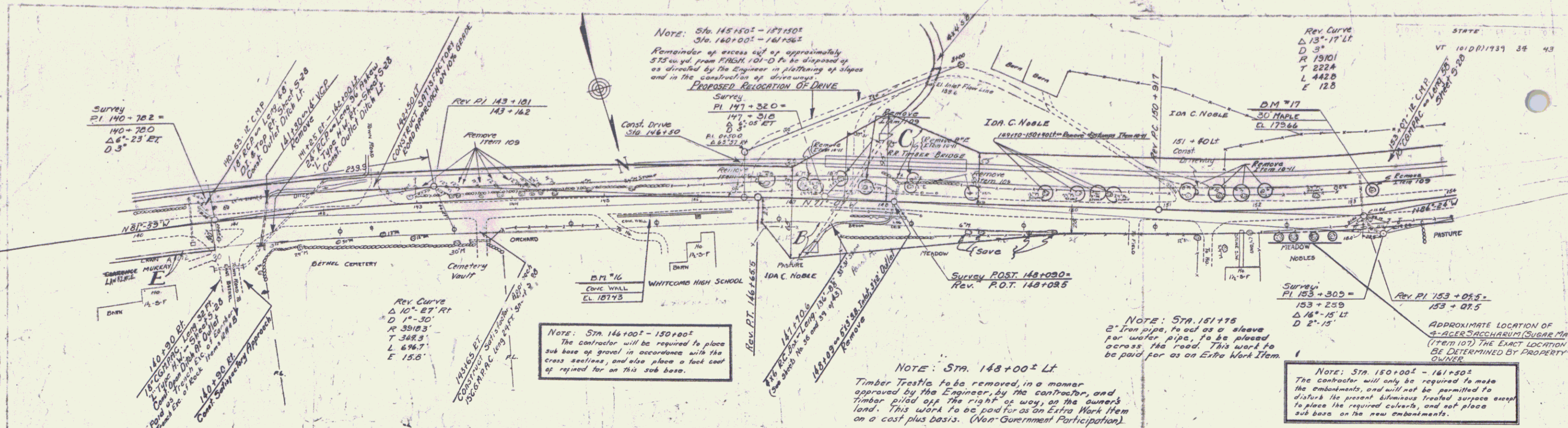


A 36°-00' Lt  
 D 6'  
 P 355.4'  
 T 310.4'  
 L 600.0'  
 E 49.2'

PARCEL	INSTRUMENT	DATE	GRANTOR	GRANTEE	RECORDED	REMARKS
C	W.D.	10-16-39	IDA C. NOBLE ET AL	ST. OF VT	BOOK 37	PAGE 102-105 10-19-39
D	W.D.	10-16-39	GEORGE W. DOUGLAS	ST. OF VT	7	471 10-21-39
E	W.D.	10-17-39	LAWRENCE W. MURRAY & GRACE A. MURRAY	ST. OF VT	37	116-117 11-14-39

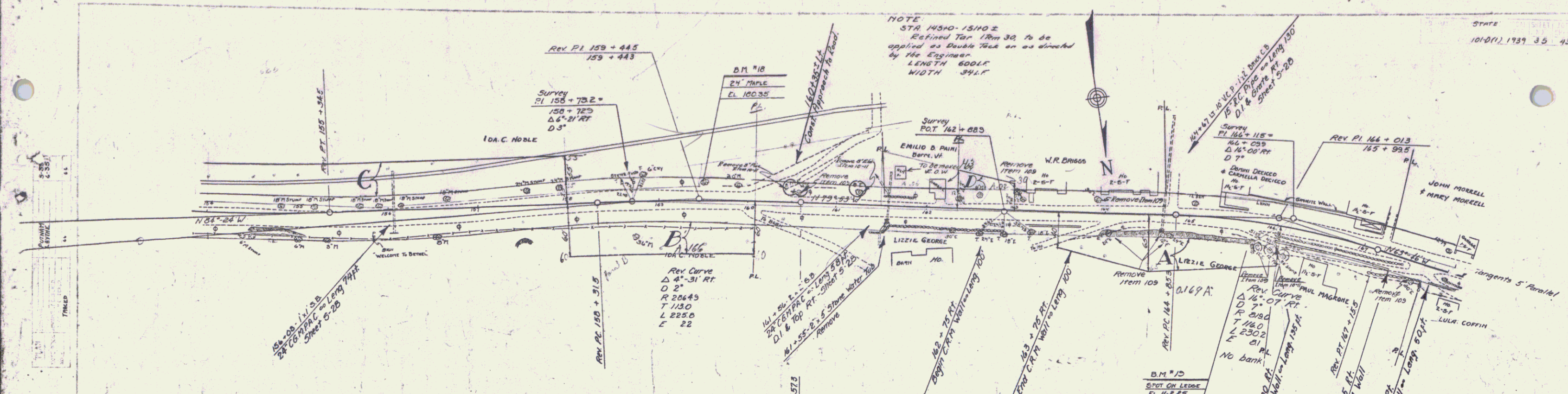
BM '15; Spike in top 36" Maple Stump 21' At Sta. 133+60 El. 237.60

Series No. 33 of

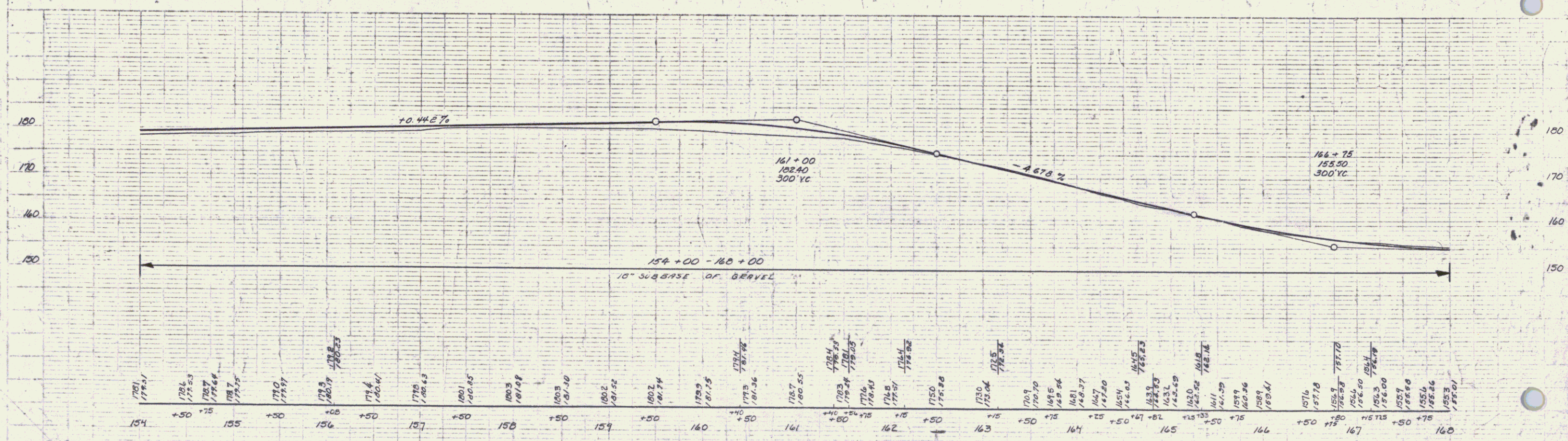


BM #4, Spot on Conc Wall 12' Rt. Sta 145+45 El. 187.43  
 BM #17, Spot in root 30' Maple 16' Lt. Sta 153+19 El. 177.67

Series No. 1010 (1)  
 Sheet 38 of 43  
 06/11/43



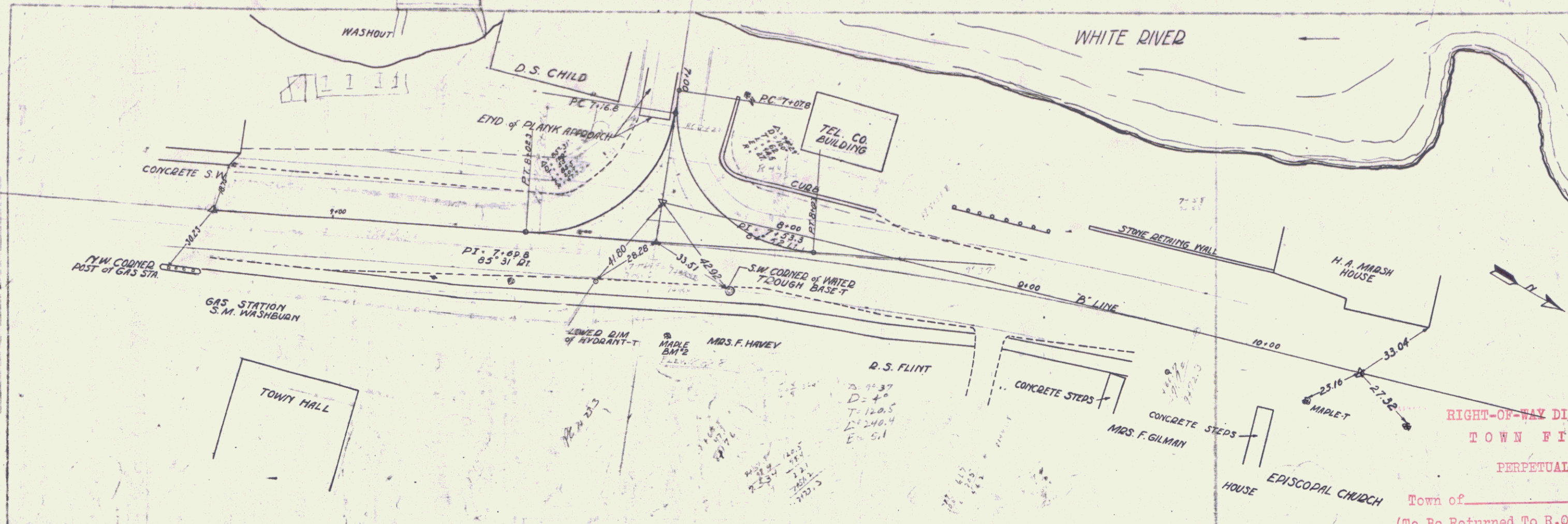
PARCEL	INSTRUMENT	DATE	GRANTOR	GRANTEE	RECORDED	REMARKS
B/C	WD	10-16-39	IDA C. NOBLE ET AL	ST OF VT	BOOK PAGE DATE	
A	QCD	10-17-39	LIZZIE GEORGE	ST OF VT.	37 110 10-19-39	
D	QCD	10-17-39	WILLIAM R. BRIGGS	ST OF VT.	37 112 10-19-39	



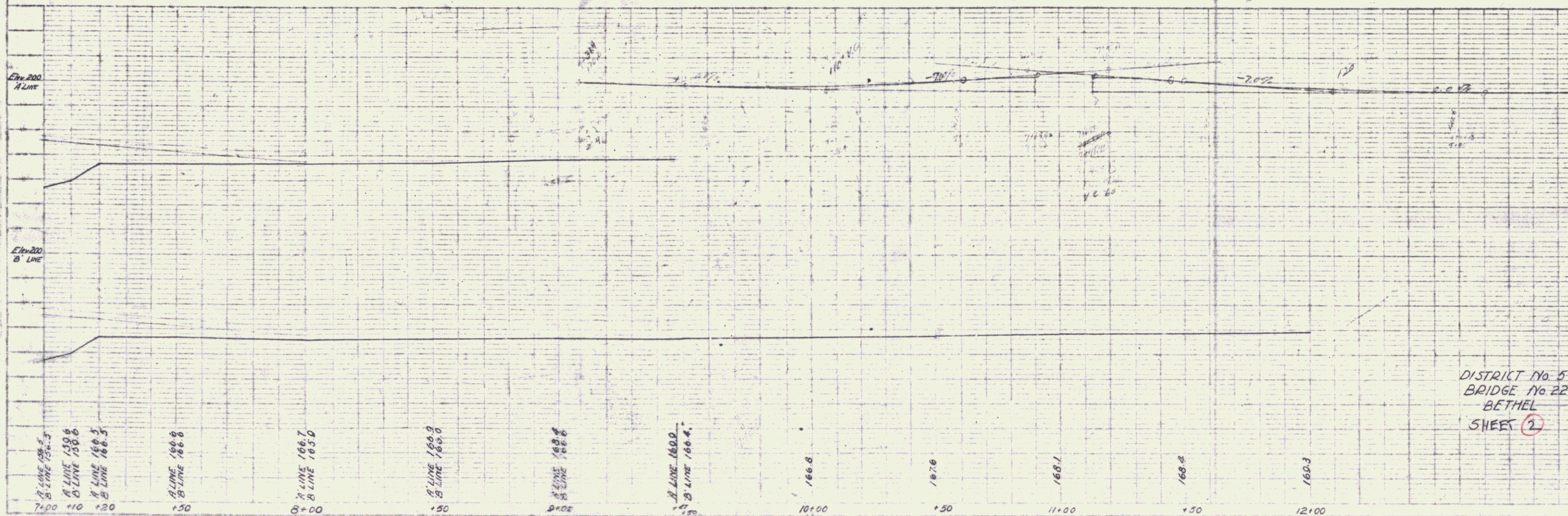
BM #18, Spike in roof 24 Maple El Lt Sta 151+34 El. 100.37  
 BM #19, Spot on ledge 22 Rt Sta 165+65 El. 164.27

Series State No. 1010(1)  
 Sheet 35 of 43  
 BETHEL



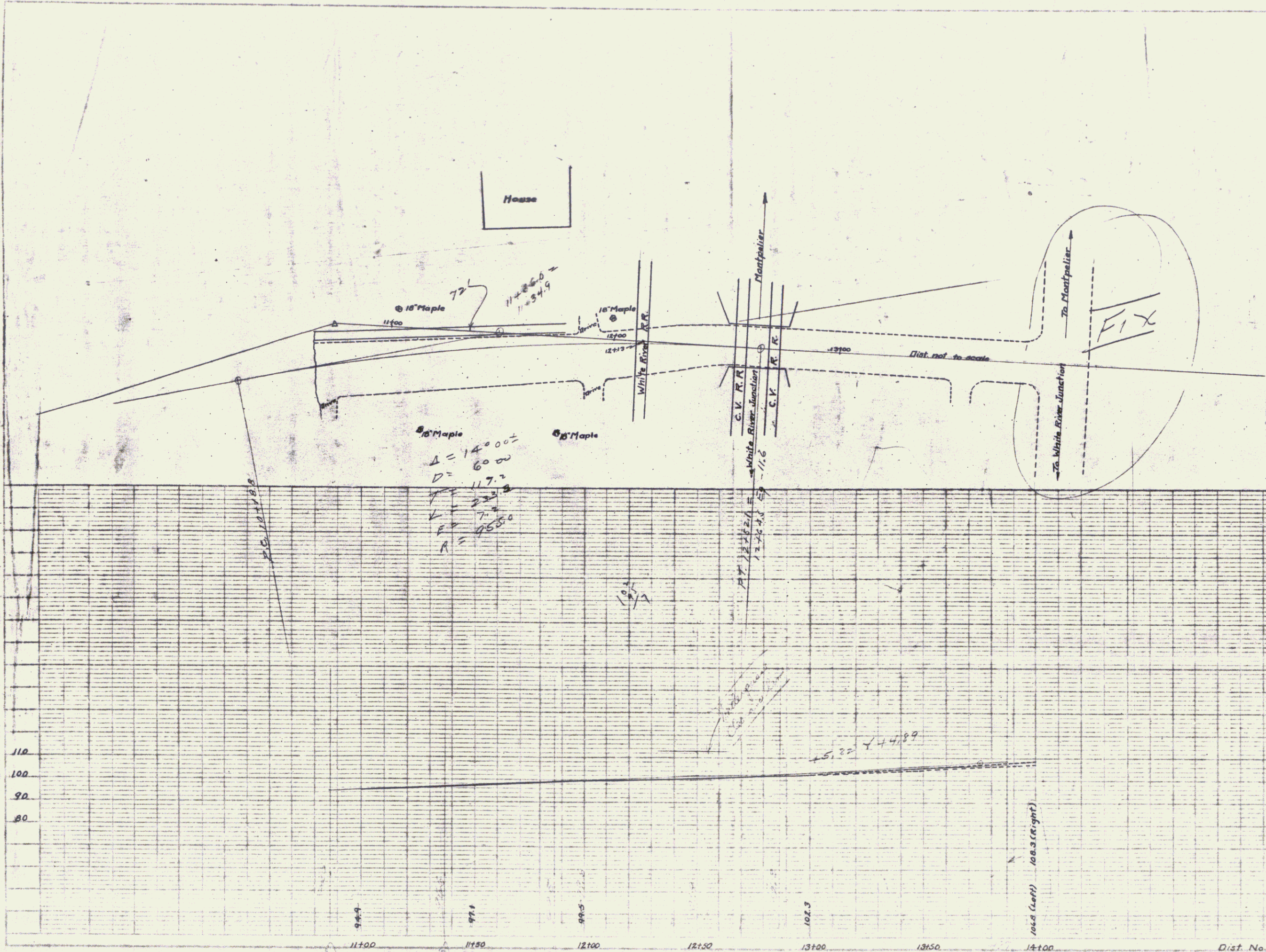


RIGHT-OF-WAY DIVISION  
 TOWN FILE  
 PERPETUAL  
 Town of \_\_\_\_\_  
 (To Be Returned To R.O.W. Division)



DISTRICT No. 5  
 BRIDGE No. 22  
 BETHEL  
 SHEET 2

P. 111  
 DIST. NO. 5  
 BRIDGE NO. 23  
 BETHEL  
 SHEET NO. 3



18" Maple  
 $\Delta = 1400'$   
 $D = 600'$   
 $\theta = 117.2'$   
 $R = 4550'$

Montpelier  
 C.V.R.R.  
 White River Junction  
 C.V.R.R.

To Montpelier  
 To White River Junction  
 FIX

110  
 100  
 90  
 80

11100 11150 12100 12150 13100 13150 14100

Dist. No. 5 - Bridge No. 23 - Bethel

Sheet No. 3

16