

INDEX OF SHEETS

SHEET NO. 1	TITLE PAGE
2	TYPICAL CROSS-SECTION OF IMPROVEMENT 24' GRAVEL
3	PLAN AND PROFILE STA. 2+50 TO STA. 6+00
4	STA. 6+00 TO STA. 11+00
5, 6, 7, 8	SUPERSTRUCTURE DETAILS SB 20-200-1 AND SB 20-200-2
9	TYPICAL DETAILS FOR STEEL BRIDGES SB 1
10, 11	ABUTMENT DETAILS
12, 13, 14	PIER DETAILS
15	APPROACH SLAB DETAILS
16, 17, 18	CROSS SECTIONS
19	STANDARD STRUCTURES S 19

STATE OF VERMONT  
STATE HIGHWAY DEPARTMENT

PLAN AND PROFILE OF PROPOSED  
STATE HIGHWAY  
FEDERAL AID PROJECT

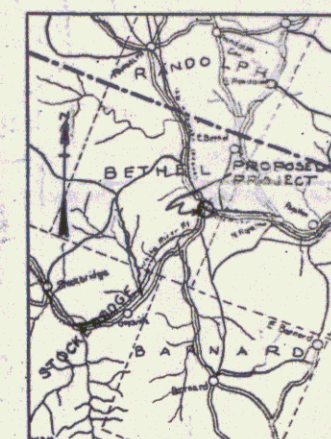
TOWN OF BETHEL

BETHEL - STOCKBRIDGE ROAD

BRIDGE AND APPROACHES  
OVER THE WHITE RIVER

FIRST BRIDGE WEST OF RAILROAD OVERPASS

LENGTH 850.0 FEET = 0.160 MILES



B# 15  
MP 3.115-3.240  
RIGHT-OF-WAY DIVISION  
TOWN FILE  
PERPETUAL

*Plt*  
Town of U# 107  
(To Be Returned To R.O.W. Division)

SCALES  
PLAN 1 in. = 20 FEET  
PROFILE VERT. 1 in. = 2.0 FEET  
HORIZ. 1 in. = 2.0 FEET  
SECTIONS 1 in. = 5 FEET

LAYOUT  
SEE SHEET 364

This project to be constructed in accordance with  
Standard Specifications on file with the U.S.  
Bureau of Public Roads.

Structures on this project to be constructed  
in accordance with details given on Standard  
Structure Sheet Series No. 5-17-18-19.

DISTRICT No. 5  
BROSE No. 23-26  
BETHEL

CONVENTIONAL SIGNS

- COUNTY LINE
- TOWN LINE
- FENCE LINE
- STONE WALL
- UNFENCED PROPERTY
- GUARD RAIL
- TRAVELED WAY
- RAILROAD
- RETAINING WALL
- CENTER LINE
- SURVEY LINE
- CULVERT
- DROP INLET
- TROLLEY POLE
- POWER POLE
- TELEPHONE POLE
- TREES
- HEDGE

GROUND ELEVATION

GRADE ELEVATION

CURVE DATA

- DEFLECTION ANGLE..... Δ
- DEGREE OF CURVE..... D
- RADIUS OF CURVE..... R
- TANGENT DISTANCE..... T
- LENGTH OF CURVE..... L
- EXTERNAL DISTANCE..... E
- POINT OF INTERSECTION..... P. I.
- POINT OF CURVE..... P. C.
- POINT OF TANGENT..... P. T.
- POINT ON TANGENT..... P. O. T.

APPROVED: April 21 1928  
*H. Sargent*  
CHIEF ENGINEER

SUBMITTED BY THE STATE HIGHWAY BOARD  
April 23 1928  
*S. D. Bates*  
COMMISSIONER OF HIGHWAYS

Pin # 008014  
Route VT 107

RECOMMENDED  
DISTRICT ENGINEER BUREAU OF PUBLIC ROADS

RECOMMENDED FOR APPROVAL  
C-EP ENGINEER BUREAU OF PUBLIC ROADS

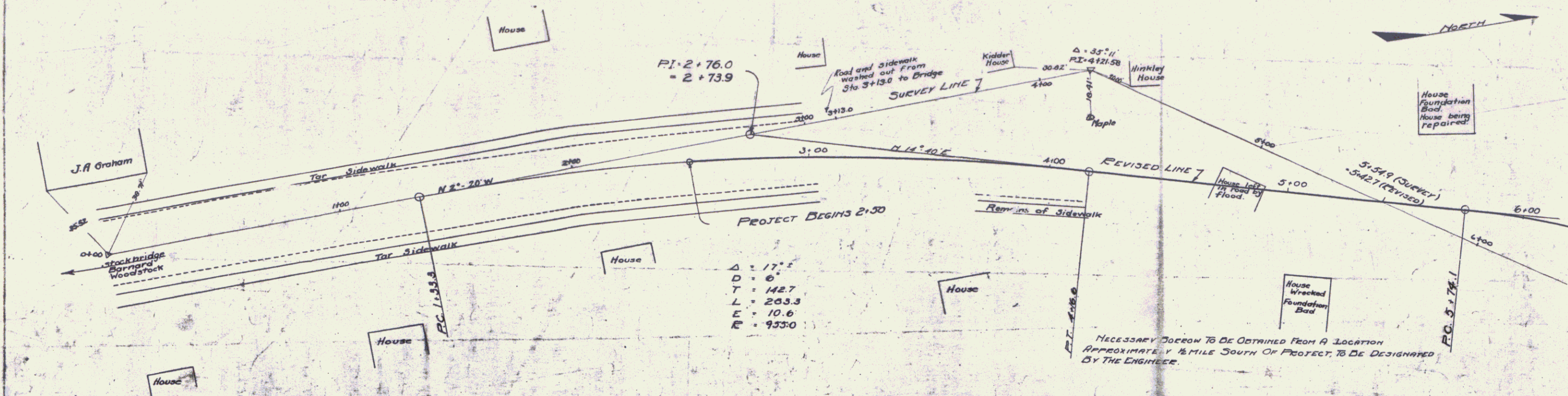
APPROVED  
DIRECTOR - BUREAU OF PUBLIC ROADS

SERIES F. NO. 3-A FILED 5-23-26  
SHEET 1 OF 19

CABLE GUARD RAIL REQUIRED  
 LEFT  
 STA. 5+98 TO STA. 6+30 - 32 LIN. FT.  
 RIGHT  
 STA. 5+26 TO STA. 6+30  $\frac{104 \text{ LIN. FT.}}{136 \text{ LIN. FT.}}$   
 TOTAL

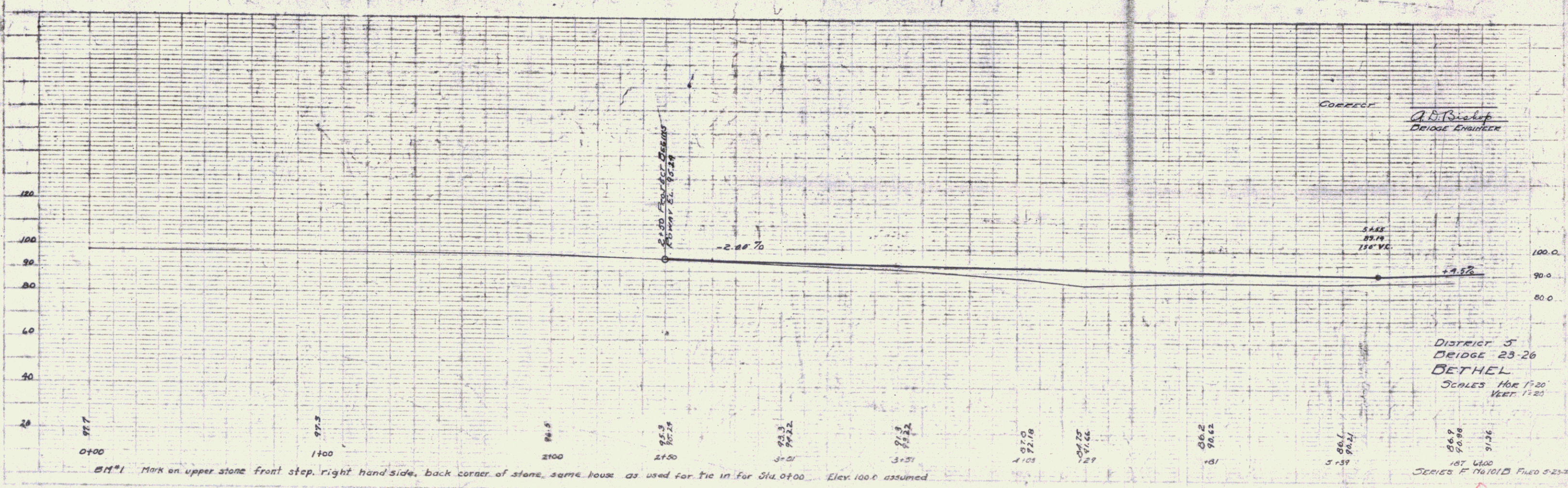
GRAVEL SURFACE COURSE  
 ESTIMATED QUANTITY - 280 Cu Yds

3-A 1920 3 19



$\Delta = 17.5$   
 $D = 6$   
 $T = 142.7$   
 $L = 203.3$   
 $E = 10.6$   
 $R = 933.0$

NECESSARY CORRECTION TO BE OBTAINED FROM A LOCATION APPROXIMATELY 1/2 MILE SOUTH OF PROJECT, TO BE DESIGNATED BY THE ENGINEER.

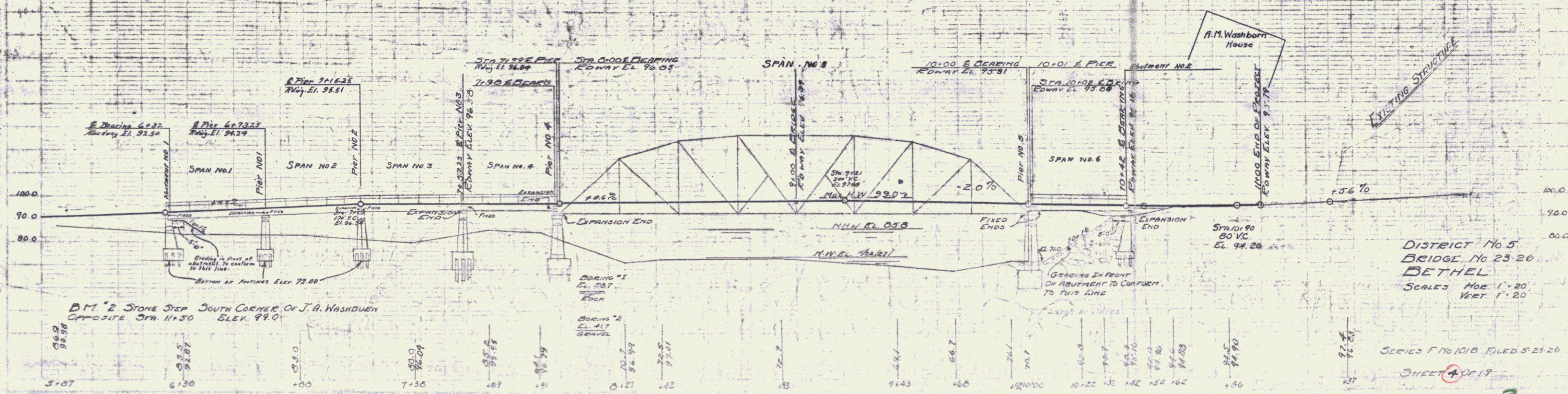
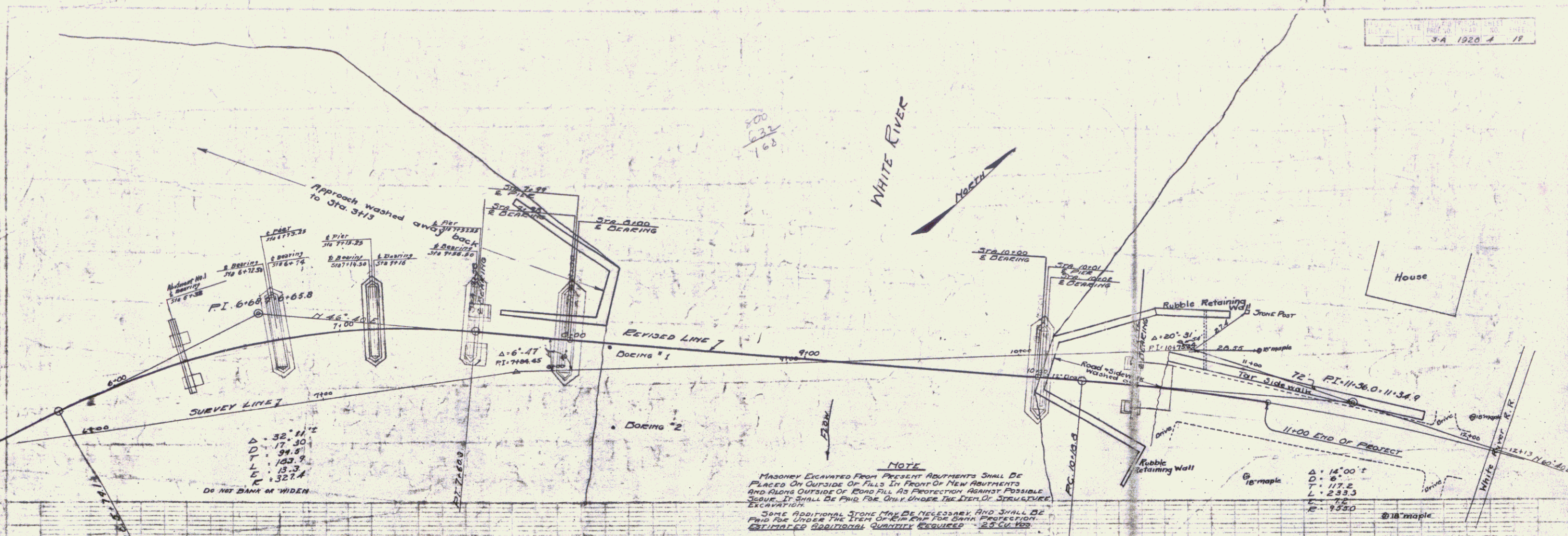


NOTE: Mark on upper stone front step, right hand side, back corner of stone, same house as used for tie in for Sta. 0+00. Elev. 100.0 assumed

CORRECT  
 A. D. Bishop  
 BRIDGE ENGINEER

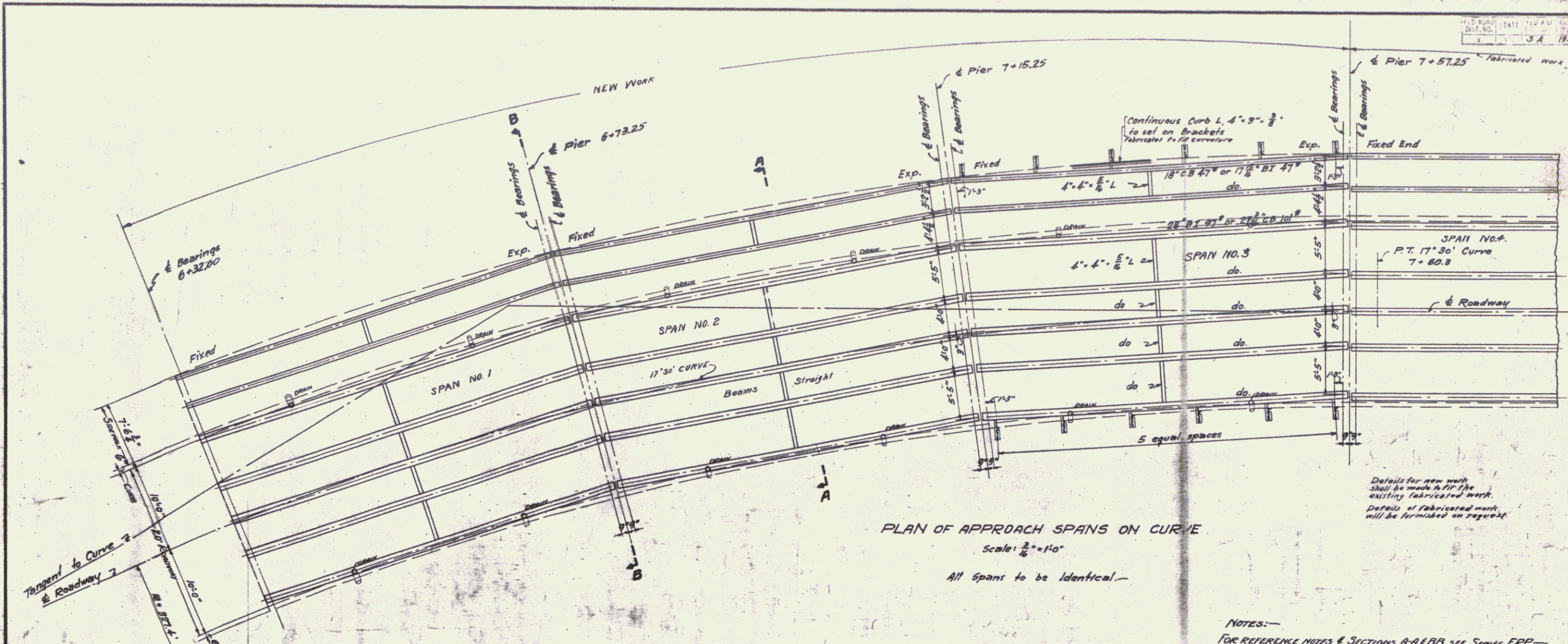
DISTRICT 3  
 BRIDGE 23-26  
 BETHEL  
 SCALES HOR 1"=20'  
 VERT. 1"=20'

SERIES F 76101D FILED 5-23-20  
 SHEET 3 OF 17



DISTRICT No. 5  
BRIDGE No. 23-26  
BETHEL  
SCALE: HOR. 1" = 20'  
VERT. 1" = 20'

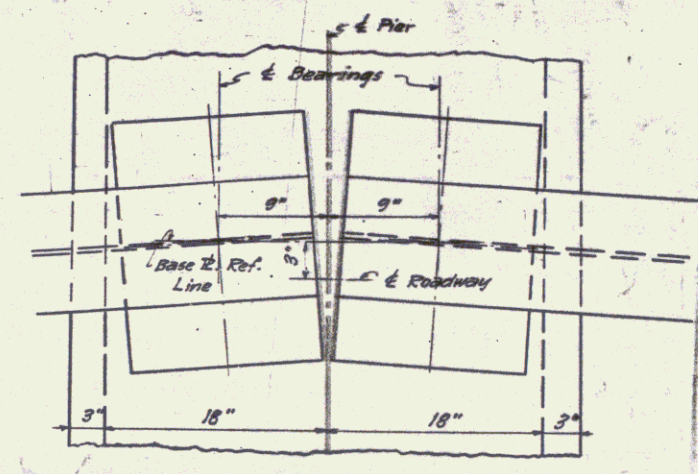
SHEET 4 OF 19



PLAN OF APPROACH SPANS ON CURVE  
 Scale:  $\frac{3}{16}'' = 1'-0''$   
 All spans to be identical.

Details for new work shall be made to fit the existing fabricated work. Details of fabricated work will be furnished on request.

NOTES:-  
 FOR REFERENCE NOTES & SECTIONS A-A & B-B SEE SERIES FRP-3A-SHEET No. 8.



PLAN OF BASE Piers  
 Scale:  $\frac{1}{16}'' = 1'-0''$

Stations shown are along  $\frac{1}{2}$  of curve. Piers and abutments are on radial lines. Painting for new work to be same as required for fabricated work - see Standard Sheet 3B-1 Detail 3-21.

EXISTING STRUCTURE

PLAN OF APPROACH SPANS 1, 2, 3.  
 WATER STREET BRIDGE OVER WHITE RIVER  
 BETHEL, VT.

QUANTITIES FOR 3 ADDITIONAL SPANS

ESTIMATED QUANTITIES	
STRUCTURAL STEEL	72000 Lbs.
REINFORCING STEEL	16500 Lbs.
CONCRETE CLASS (M-2-A)	88 Cu. Yds.

Surveyed by C.S.  
 Designed by E.S.  
 Drawn by T.S. 10-18-28  
 Traced by W.F. Dunder 11-1-19  
 Checked by M.F. Dunder  
 Series FRP No. 3 A Fixed  
 Sheet 7 of 19 Sheets