

INDEX OF SHEETS

1	TITLE PAGE
2	TYPICAL CROSS SECTION OF IMPROVEMENT - DOUBLE TACK COAT OF CUTBACK ASPHALT WITH PEA STONE SEAL.
3	QUANTITY SHEET - ITEMS
4	QUANTITY SHEET - DRAINAGE
5-7	EARTHWORKS
8-12	PLAN AND PROFILE
13	ROADWAY STANDARD RS 56 - 1 (BANKING)
14	ROADWAY STANDARD RS 56 - 3 (BOUNDARY MARKERS)
15	ROADWAY STANDARD RS 56 - 4 (DRAINAGE)
16	ROADWAY STANDARD RS 56 - 6 (GRADING)
17	ROADWAY STANDARD RS 56 - 11 (GUARD RAIL)
18	ROADWAY STANDARD RS 56 - 12 (BARRICADES, SIGN AND LIGHTS)
19	ROADWAY STANDARD RS 56 - 14 (PRECAST D.I.)
20	ROADWAY STANDARD RS 57 - 9 (FLUSHING BASINS)
21	ROADWAY STANDARD G - 4 (STEEL MARKER POSTS)
22	ROADWAY STANDARD A - 61 (DRILLING AND BLASTING)
23	PRELIMINARY INFORMATION SHEET
24	ABUTMENT #1 PLAN AND DETAIL
25	ABUTMENT #2 PLAN AND DETAIL
26	PIER PLAN AND DETAIL
27	SUPERSTRUCTURE PLAN AND DETAIL
28	BRIDGE STANDARD SCB - 30 - 56 SHEET #1
29	BRIDGE STANDARD SCB - 30 - 56 SHEET #2
30	BRIDGE STANDARD SB - 20 - 56
31	BRIDGE STANDARD SB - 50 - 57 SHEET #1
32	BRIDGE STANDARD SB - 50 - 57 SHEET #2
33	REINFORCING DETAILS
34-42	CHANNEL SECTIONS
43	4'-0" X 4'-0" CONCRETE BOX CULVERT PLAN AND SECTION
44	STEEL SCHEDULE FOR CONCRETE BOX
45	STANDARD DRAWING S.C.W. 4
46	STANDARD DRAWING S.C. 2-4
47	STANDARD DRAWING S.B. - 21 - 56
48	12'-4" X 7'-9" CORR. GALV. METAL PLATE ARCH DETAILS
49-51	CHANNEL SECTIONS
52-126	SECTIONS

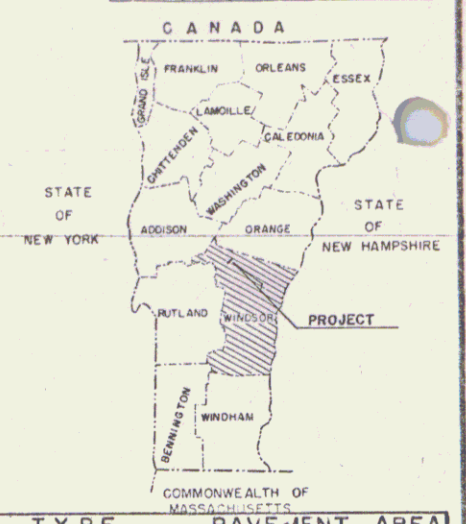
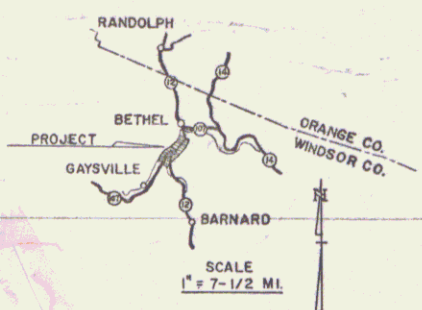
**STATE OF VERMONT
DEPARTMENT OF HIGHWAYS
PROPOSED IMPROVEMENT**

**TOWN OF BETHEL
COUNTY OF WINDSOR
VERMONT RTE. 107**

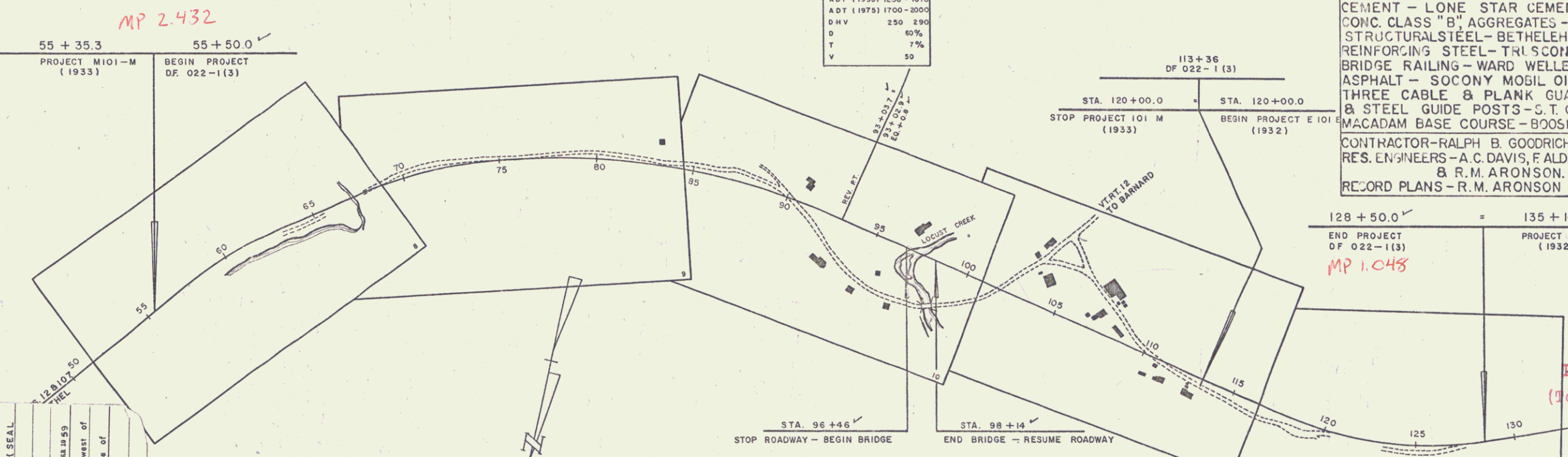
BETHEL - GAYSVILLE ROAD

BEGINNING AT A POINT APPROXIMATELY 4,920 FEET SOUTHWEST OF THE INTERSECTION OF VT. RTE. 107 AND VT. RTE. 12 IN THE VILLAGE OF BETHEL AND PROCEEDING SOUTHWESTERLY 7,300.8 FEET.

LENGTH OF PROJECT 7,300.8 FEET = 1.383 MILES ✓
 LENGTH OF ROADWAY 7,132.8 FEET = 1.351 MILES ✓
 LENGTH OF BRIDGE 168.0 FEET = .032 MILES ✓



PROJECT NAME & NUMBER	BETHEL - DF-022-1(3)	TYPE	DOUBLE TACK COAT OF CUTBACK ASPHALT (SEAL OMITTED)	PAVEMENT AREA	20,606 S.Y.
RECORD PLANS					
MATERIALS					
SUB-BASE OF GRAVEL - LE BLANC RIVER BAR (WHITE RIVER)-BETHEL, VT.					
TOXIER RIVER BAR (WHITE RIVER)-BETHEL, VT.					
A.C.C.G. METAL PIPE - NORTHEASTERN CULV. CO. - WESTMINSTER, VERMONT.					
REINFC. CONC. PIPE - VT. CONCRETE PIPE CO. - WINDSOR, VERMONT.					
CEMENT - LONE STAR CEMENT CO. - HUDSON, NEW YORK.					
CONC. CLASS "B" AGGREGATES - BOOSKA PLANT - BETHEL, VERMONT.					
STRUCTURAL STEEL - BETHEHEM STEEL CO. - BETHEHEM, PENNA.					
REINFORCING STEEL - TRUSCON STEEL CO. - BOSTON, MASS.					
BRIDGE RAILING - WARD WELLS CO. INC. - NEWTON UPPER FALLS, MASS.					
ASPHALT - SOCONY MOBIL OIL CO. - E. PROVIDENCE, R.I.					
THREE CABLE & PLANK GUARD RAIL					
& STEEL GUIDE POSTS - S.T. GRISWOLD CO. - ESSEX JUNCTION, VT.					
MACADAM BASE COURSE - BOOSKA PLANT - BETHEL, VERMONT.					
CONTRACTOR - RALPH B. GOODRICH INC. CONTRACT DATE - AUGUST 8, 1959					
RES. ENGINEERS - A.C. DAVIS, F. ALDRICH, & R.M. ARONSON. STARTED - AUGUST 14, 1959					
RECORD PLANS - R.M. ARONSON. COMPLETED - SEPTEMBER 18, 1959					
ACCEPTED - SEPTEMBER 18, 1959					



CC
R.O.W. L.
COUNTY I
TOWN LB
FENCE LI
STONE N
UNFENCE
GUARD R

TRAVEL
RAILROAD
RETAINW
CENTER
SURVEY
CULVERT
DROP IN
TROWEL
POWER
TELEPH
TREES
HEDGE

PROJECT
BETHEL
COUNTY
WINDSOR
STATE
DF-022-1(3)
ITEMS
OMITTED

CONTRACTOR
RALPH B. GOODRICH INC.
SOUTH BURLINGTON, VERMONT.
Location
Beginning at a point approximately 4,920 feet southwest of
the intersection of Vermont Routes 107 and 12 in the village of
Bethel and proceeding southwesterly 7,300.8 feet.

BETHEL, DF-022-1(3)
CONTRACTOR - RALPH B. GOODRICH INC.
COMPLETED - SEPTEMBER 18, 1959.
RECORD PLANS - R.M. ARONSON.

GROUND ELEVATION	DATUM	LINE
GRADE ELEVATION	DATUM	LINE
CURVE DATA		
DEFLECTION OF ANGLE	A	
DEGREE OF CURVE	D	
RADIUS OF CURVE	R	
TANGENT DISTANCE	T	
LENGTH OF CURVE	L	
EXTERNAL DISTANCE	E	
POINT OF INTERSECTION	PI	
POINT OF CURVE	PC	
POINT OF TANGENT	PT	
POINT ON TANGENT	POT	
POINT ON SUB-TANGENT	POST	

SCALES

TITLE	1" = 300'
TYPICAL	1" = 2-1/2'
PLAN	1" = 50'
PROFILE HORIZONTAL	1" = 90'
PROFILE VERTICAL	1" = 10'
CROSS-SECTIONS	1" = 5' 8 10"

APPROVED	SECONDARY ENGINEER	APPROVED	PRODUCTION ENGINEER	APPROVED	BRIDGE ENGINEER	APPROVED	DISTRICT ENGINEER	APPROVED	TRWAY ENGINEER	APPROVED	CHIEF ENGINEER
DATE	July 14, 1958	DATE	July 14, 1958	DATE	July 15, 1958	DATE	July 21, 1958	DATE	July 21, 1958	DATE	July 21, 1958

THESE PLANS ARE SUBJECT TO SUCH REVISIONS AS MAY BE REQUIRED BY THE BUREAU OF PUBLIC ROADS OR THE COMMISSIONER OF HIGHWAYS.

CONSTRUCTION IS TO BE CARRIED ON IN ACCORDANCE WITH THE PLANS AND THE STANDARD SPECIFICATIONS FOR HIGHWAY AND BRIDGE CONSTRUCTION OF JANUARY 1956 SUBMITTED TO THE BUREAU OF PUBLIC ROADS AS APPROVED JULY 5, 1956, INCLUDING ALL SUBSEQUENT APPROVED REVISIONS AND SUCH REVISED SPECIFICATIONS AND SPECIAL PROVISIONS AS ARE SUBMITTED WITH THE PLANS.

DEPARTMENT OF COMMERCE
BUREAU OF PUBLIC ROADS

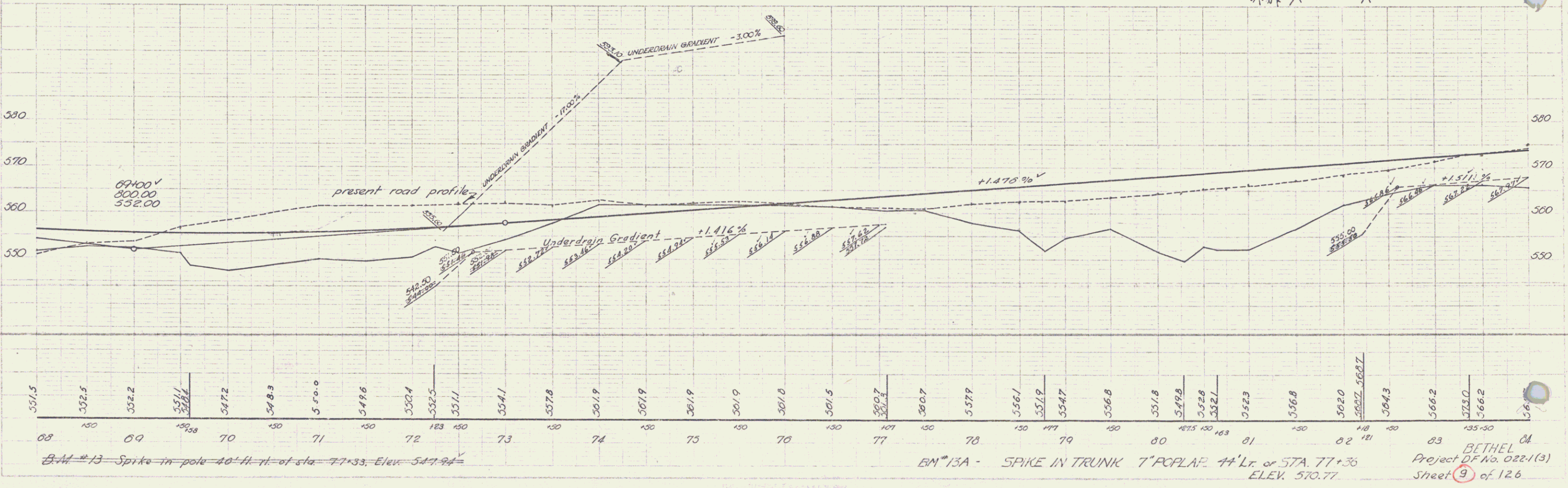
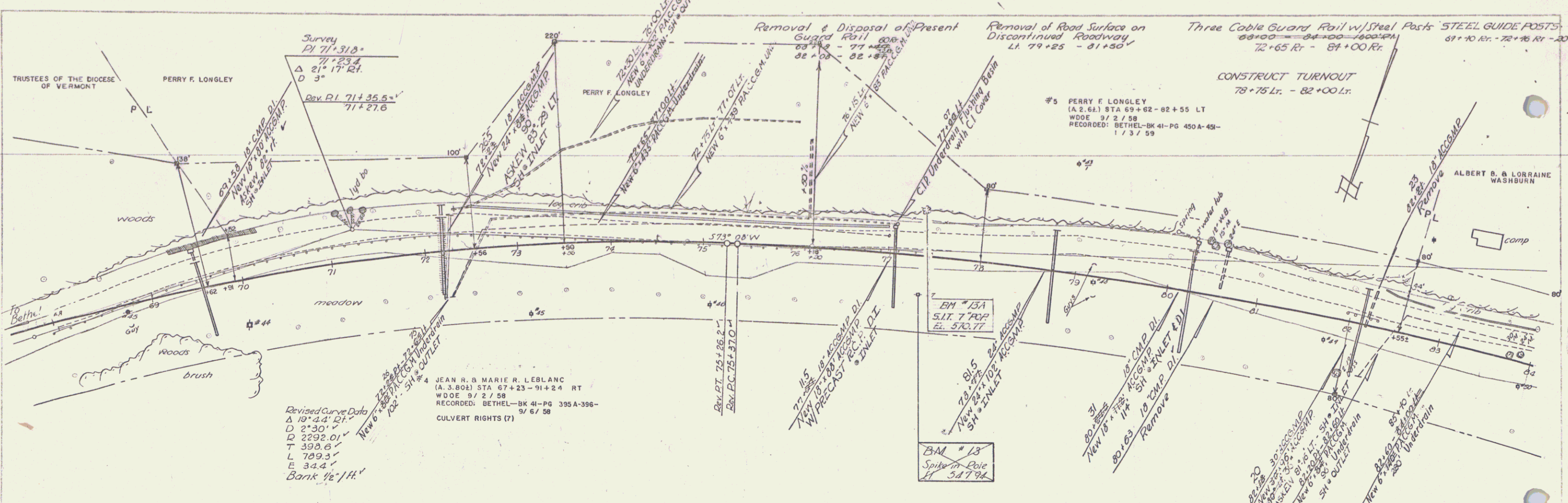
Pin # D0R013

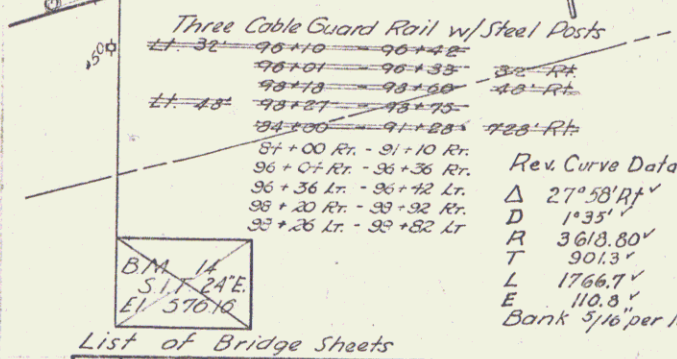
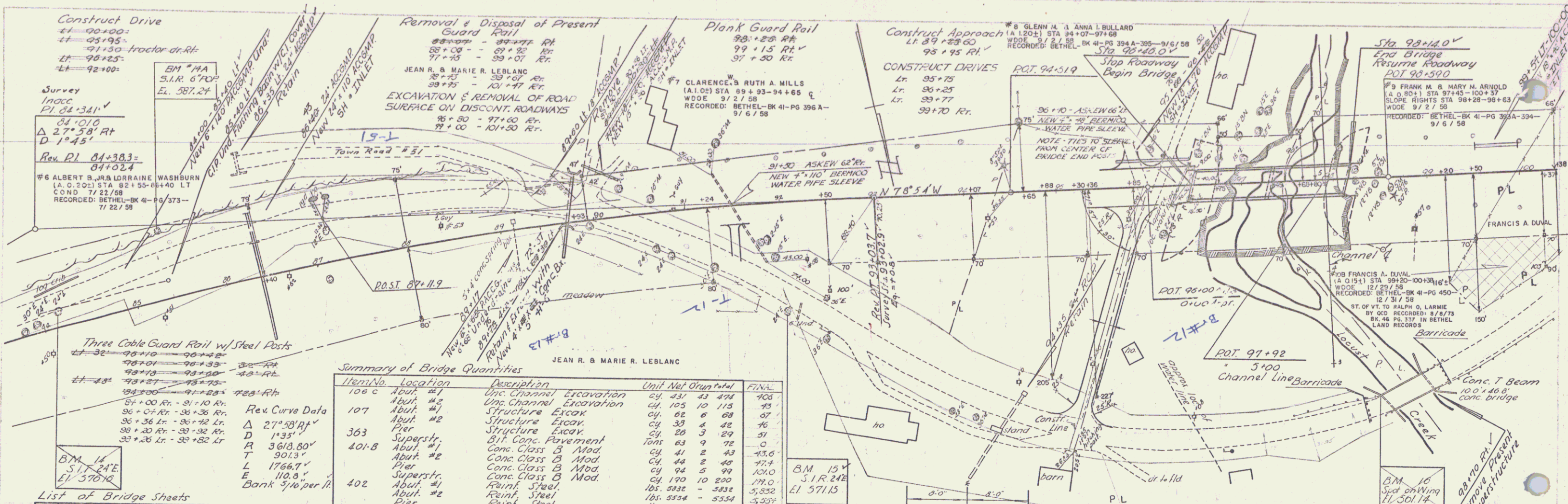
APPROVED

DIVISION ENGINEER

PROJECT DF NO. 022-1(3)

SHEET 1 OF 126 SHEETS

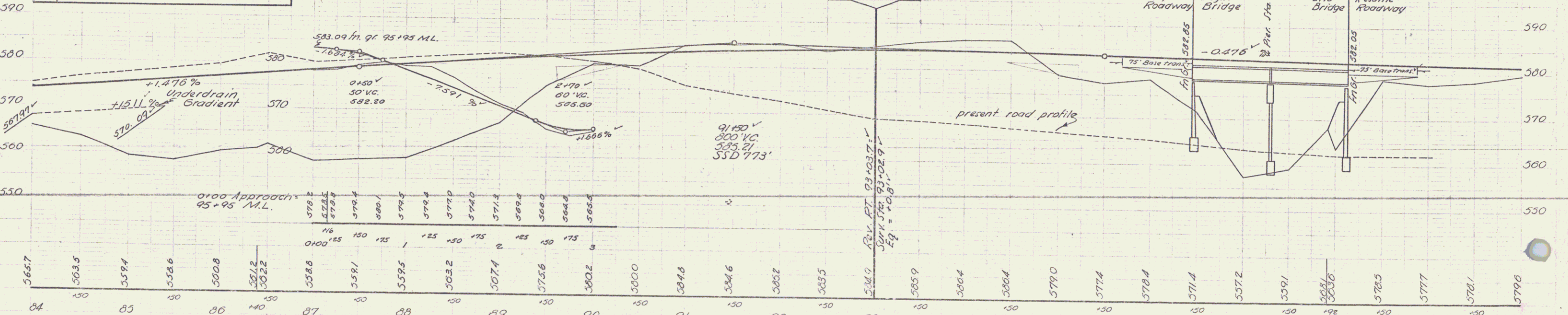




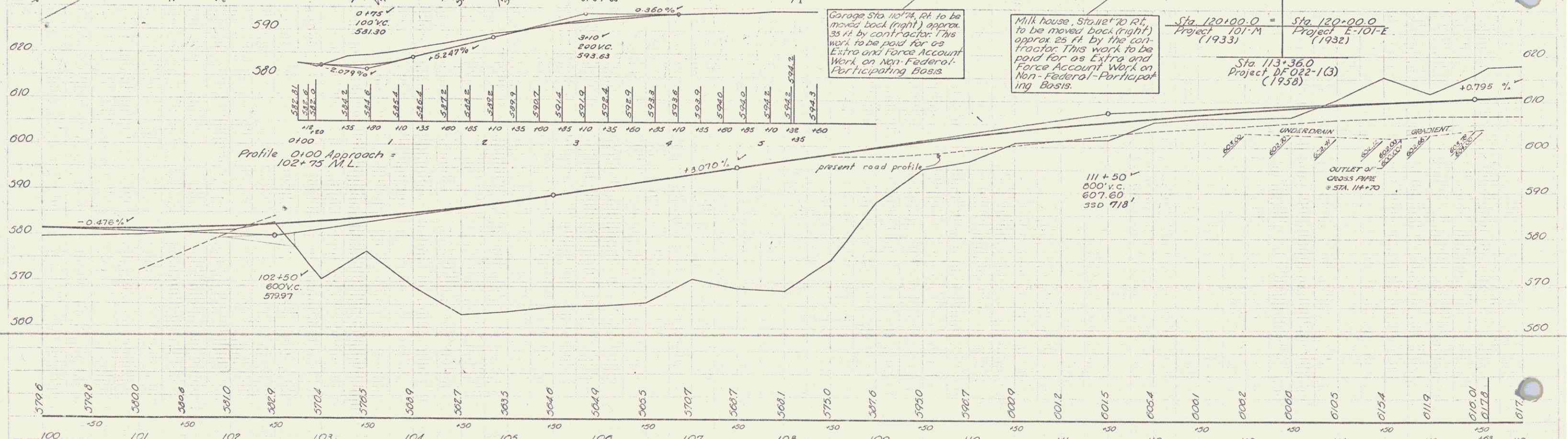
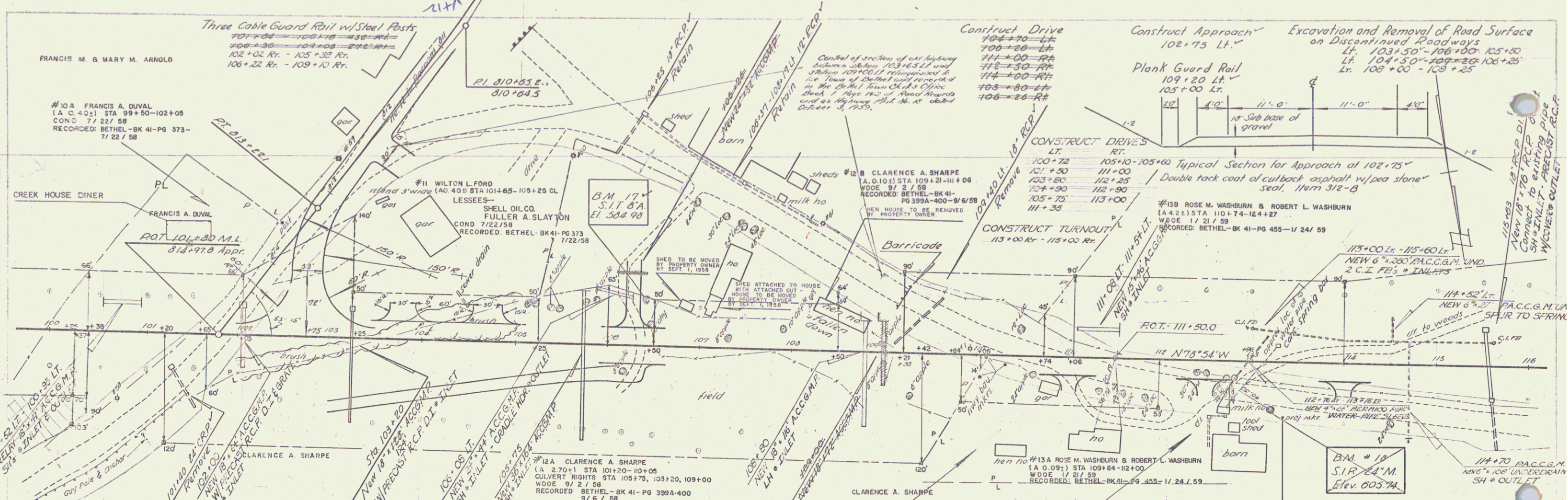
Summary of Bridge Quantities

Item No.	Location	Description	Unit	Mat	Orig	Final
106 c	Abut. #1	Unc. Channel Excavation	CY	431	43	474
107	Abut. #2	Unc. Channel Excavation	CY	105	10	115
363	Pier	Structure Excav.	CY	62	6	68
401-B	Superstr.	Structure Excav.	CY	33	4	37
401-B	Abut. #2	Bit. Conc. Pavement	Tons	63	9	72
401-B	Abut. #2	Conc. Class B Mod.	CY	41	2	43
401-B	Pier	Conc. Class B Mod.	CY	44	2	46
401-B	Pier	Conc. Class B Mod.	CY	74	5	79
402	Abut. #1	Reinf. Steel	Lbs.	5354	-	5354
402	Abut. #2	Reinf. Steel	Lbs.	4928	-	4928
402	Superstr.	Reinf. Steel	Lbs.	34508	-	34508
403	Superstr.	Spiral Reinf.	Lbs.	1	-	1
404-A	Superstr.	Struct. Steel	Lbs.	84100	480	247000
407	Abut. #1	Asph. Asbestos Coating	Sq. Ft.	4	-	4
407	Abut. #2	Asph. Asbestos Coating	Sq. Ft.	4	-	4
581	Pier	Asph. Asbestos Coating	Sq. Ft.	15	-	15
581	Abut. #1	Stone Fill Heavy Type	CY	642	65	707
581	Abut. #2	Stone Fill Heavy Type	CY	400	40	440
572	Superstr.	Granite Bridge Curb	LF	330	-	330
572	Superstr.	Bridge Railing	LF	320	-	320

- List of Bridge Sheets
- Preliminary Information Sheet
 - Abutment #1 Plan and Detail
 - Abutment #2 Plan and Detail
 - Pier Plan and Detail
 - Superstructure Plan and Detail
 - Standard Drawing SCB-30-50 Sh. 1
 - Standard Drawing SCB-30-50 Sh. 2
 - Standard Drawing SB-50-30
 - Standard Drawing SB-50-30 Sh. 1
 - Standard Drawing SB-50-30 Sh. 2
 - Reinforcing Details
 - Channel Sections - 9 Sheets



BM #14 Spike in trunk of 24" Elm 18 Ft. Lt. of Sta. 84+10, Elev. 576.16
 B.M. #15 SPIKE in TRUNK of 6" POPLAR, 70 Ft. LEFT of STA. 85+71 ELEV. 577.21
 B.M. #16 Spot on NE Wingwall of bridge 235 Ft. Rt. of Sta. 98+80 Elev. 561.14
 Project of No. 022-113
 Sheet 10 of 126



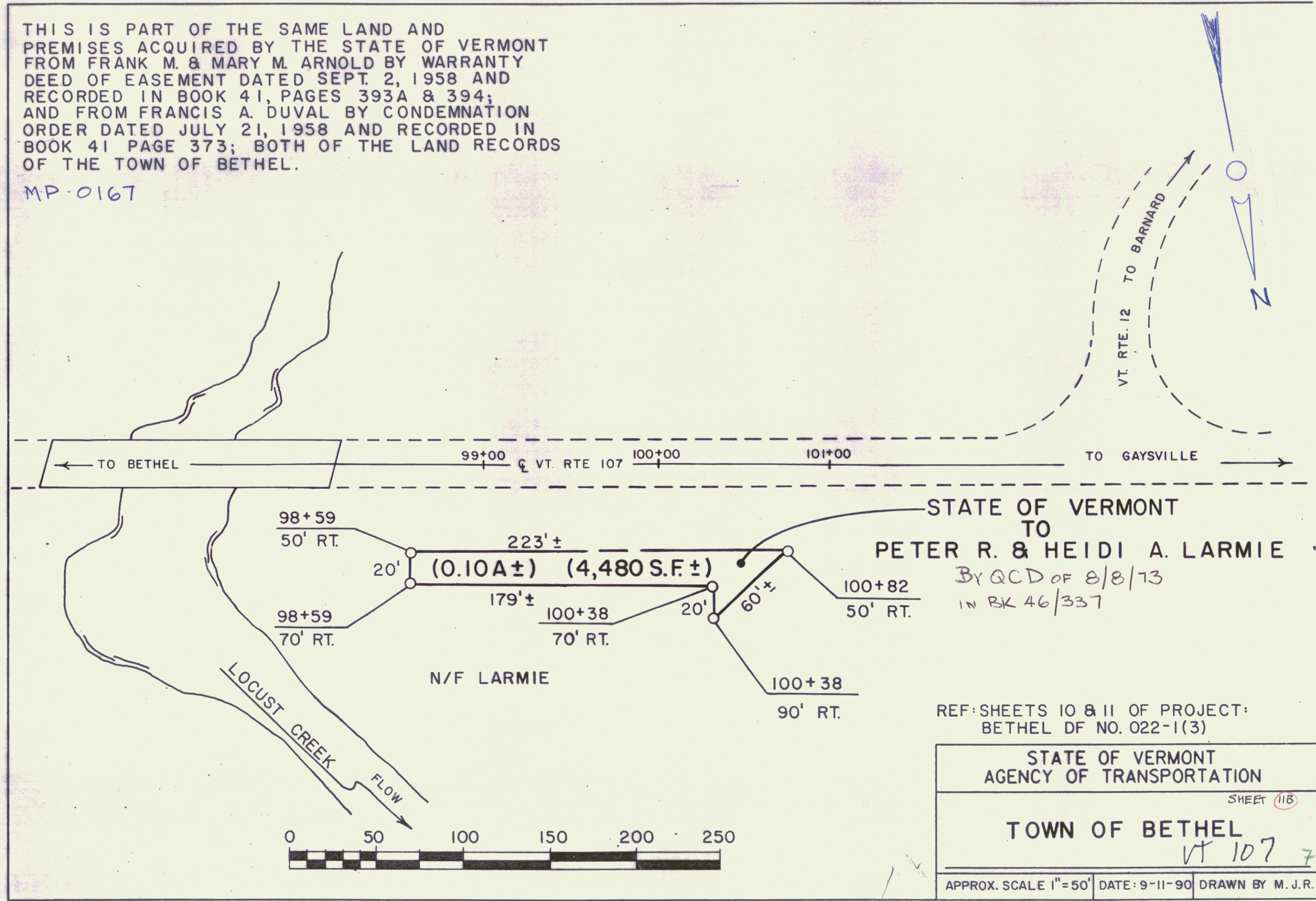
B.M. #17 Spike in Trunk of 8" Apple 51 ft. Lt. Sta. 108+40, Elev. 584.90'

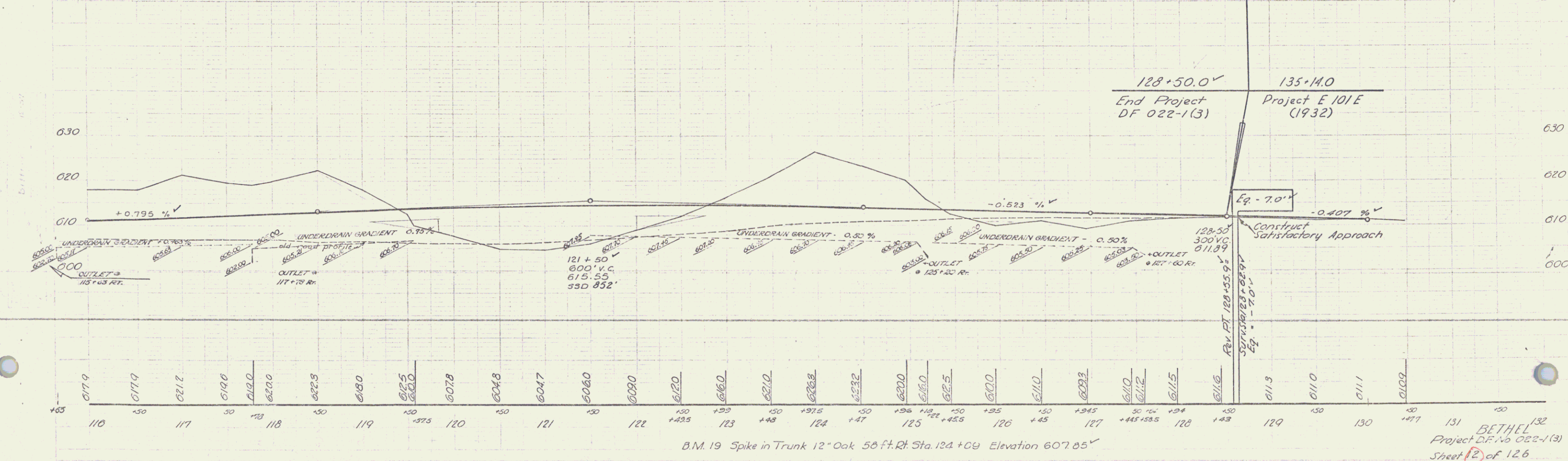
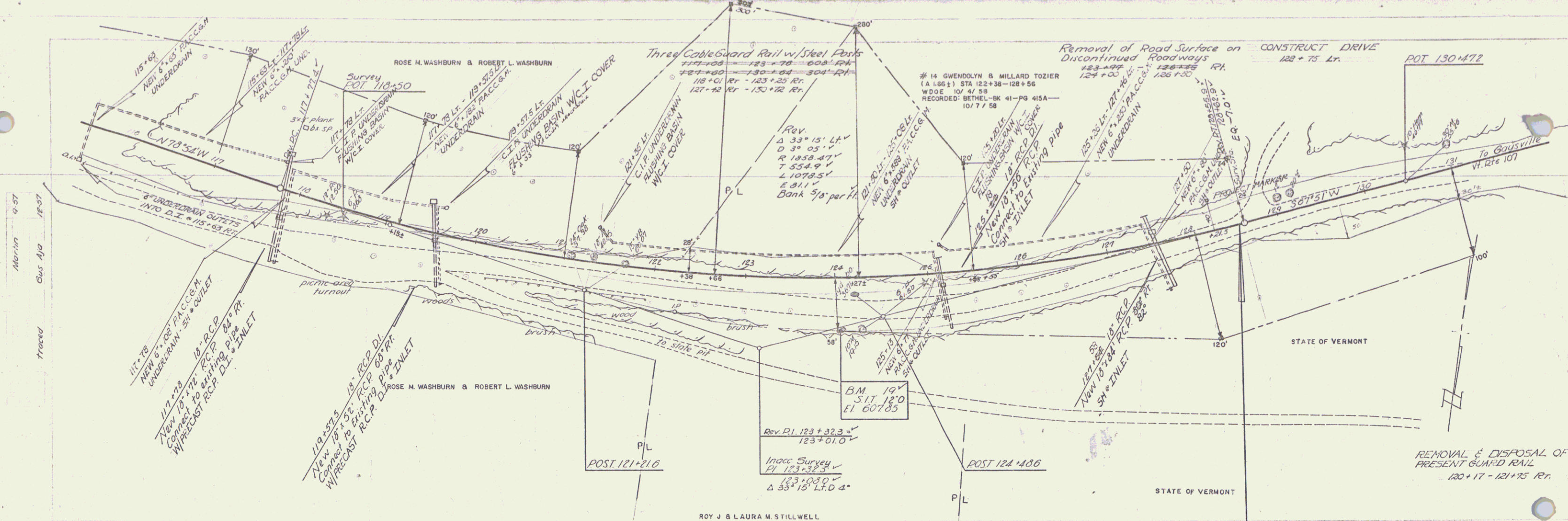
B.M. #13 Spike in Root of 24" Maple 50 ft. Rt. Sta. 113+18 Elev. 605.74'

BETHEL Project DF No. 022-1(3) Sheet 11 of 126

THIS IS PART OF THE SAME LAND AND PREMISES ACQUIRED BY THE STATE OF VERMONT FROM FRANK M. & MARY M. ARNOLD BY WARRANTY DEED OF EASEMENT DATED SEPT. 2, 1958 AND RECORDED IN BOOK 41, PAGES 393A & 394; AND FROM FRANCIS A. DUVAL BY CONDEMNATION ORDER DATED JULY 21, 1958 AND RECORDED IN BOOK 41 PAGE 373; BOTH OF THE LAND RECORDS OF THE TOWN OF BETHEL.

MP 0167





B.M. 19 Spike in Trunk 12" Oak 58 ft. Rt. Sta. 124+09 Elevation 607.85'

BETHEL 132
Project D.F. No. 022-1(3)
Sheet 12 of 12.6