

INDEX OF SHEETS

SHEET NO. 1	TITLE PAGE	
2	TYPICAL CROSS-SECTION OF IMPROVEMENT	GRAVEL MIXED-IN-PLACE SURFACE COURSE
3	WIDENING AND BANKING TABLES	
4-15	PLAN AND PROFILE SHEETS	
16	STANDARD STRUCTURES SHEET 528	PIPE CULVERTS
17	"	529 - BOX "
18	"	530 - GUARD RAIL, C.R.M. WALL, FED.AID MARKERS, DRAINAGE STRUCTS.
19	BARRICADES, SIGNS AND LIGHTS - 5B11	
20-48	CROSS-SECTIONS	

FED. ROAD DIST. NO.	STATE	STATE PROJ. NO.	FISCAL YEAR	SHEET NO.	TOTAL SHEETS
9	VT.	101-M	1933	1	48

STATE OF VERMONT
STATE HIGHWAY DEPARTMENT

PLAN AND PROFILE OF PROPOSED
STATE HIGHWAY

STATE PROJECT

TOWN OF BETHEL

BETHEL - STOCKBRIDGE ROAD

FROM THE BRIDGE IN BETHEL VILLAGE SOUTHWESTERLY 3.000 MILES TO THE BEGINNING OF FLOOD RELIEF PROJECT 3B

LENGTH OF PROJECT 15,840 FEET = 3.000 MILES

PROJECT NO.	101-M
NUMBER	101-M
TYPE	Right-of-Way Deeded Grant
CONTRACTOR	Thatcher & Thayer
LOCATION	Bethel - Stockbridge Road, from bridge in Bethel Village, southerly 3 miles to "F.R.P. 3B"
YEAR OF EST.	1933

SCALES
LAYOUTS : 1 INCH = 50 FEET
PROFILE (HOR: 1 INCH = 50 FEET
VERT: 1 INCH = 10 FEET
CROSS-SECTIONS: 1 INCH = 5 FEET

MP 3.220-0.316

RIGHT-OF-WAY DIVISION
TOWN FILE

PERPETUAL

Town of U-107

(To Be Returned To R.O.W. Division)

APPROVED: *H.E. Sawyer* 5/13/33

COMMISSIONER OF HIGHWAYS

SUBMITTED BY ORDER OF THE STATE HIGHWAY BO

CONVENTIONAL SIGNS

COUNTY LINE	GROUND ELEVATION	BATHY LINE
TOWN LINE	GRADE ELEVATION	BATHY LINE
FENCE LINE		
STONE WALL		
UNFENCED PROPERTY		
GUARD RAIL		
TRAVELED WAY		
RAILROAD		
RETAINING WALL		
CENTER LINE		
SURVEY LINE		
CULVERT		
DROP INLET		
UTILITY POLE		
TELEPHONE POLE		
TREES		
HEDGE		

CURVE DATA

DEFLECTION ANGLE	Δ
DEGREE OF CURVE	D
RADIUS OF CURVE	R
TANGENT DISTANCE	T
LENGTH OF CURVE	L
EXTERNAL DISTANCE	E
POINT OF INTERSECTION	P.I.
POINT OF CURVE	P.C.
POINT OF TANGENT	P.T.
POINT ON TANGENT	P.O.T.

These plans are subject to such revisions as may be required by the Commissioner of Highways. Construction is to be carried on in accordance with the Standard Road and Bridge Specifications of 1930, with such revised specifications and special provisions as are submitted with these plans.

Project 101-M
Pin # 000112
Route VT107
Date 5/13/1933

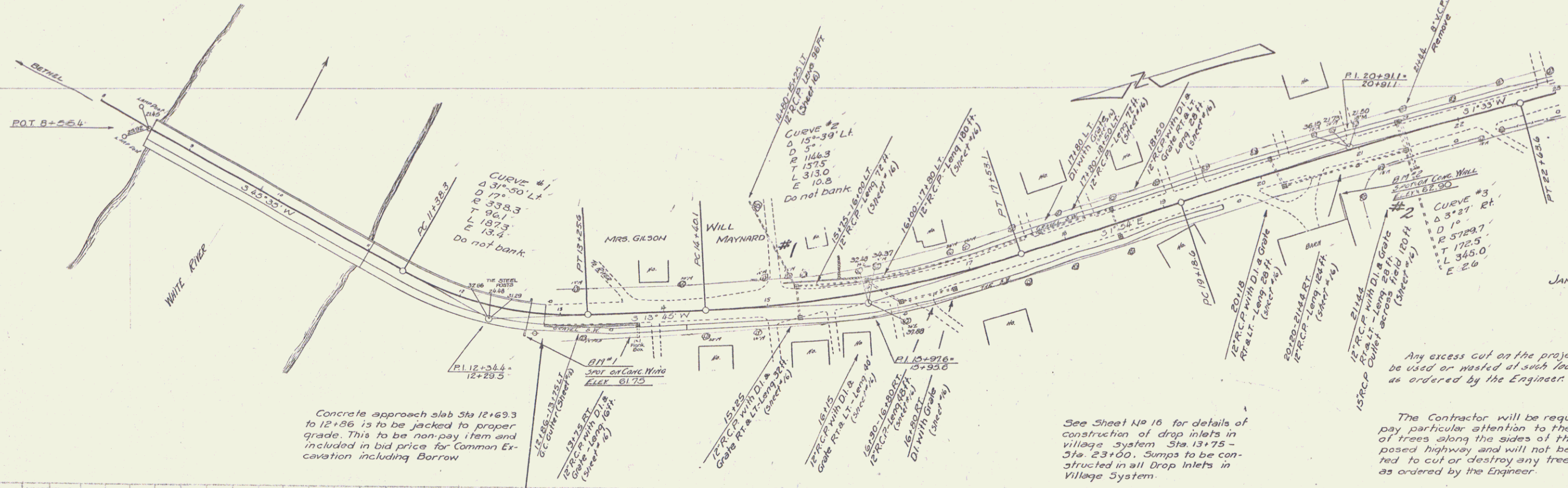
RECOMMENDED	DISTRICT ENGINEER	BUREAU OF PUBLIC ROADS
RECOMMENDED FOR APPROVAL	CHIEF ENGINEER	BUREAU OF PUBLIC ROADS
APPROVED	DIRECTOR	BUREAU OF PUBLIC ROADS

CORRECTED: *Aug 13 1933*
A. J. ...
ROAD ENGINEER

SERIES STATE NO. 101-M FILED
SHEET 1 OF 48

Parcel	Kind of Instrument	Date of Instrument	Grantor	Grantee	Record of Data	Remarks
Cur/Outlet #1	Q.C.D.	5-22-33	W.A. Maynard	Steff	36 69	7-12-33 Sta. 13+25+
" " #2	"	6-8-33	J.J. Graham	"	36 67	7-14-33 Sta. 21+44+

101-M 1933 4 48

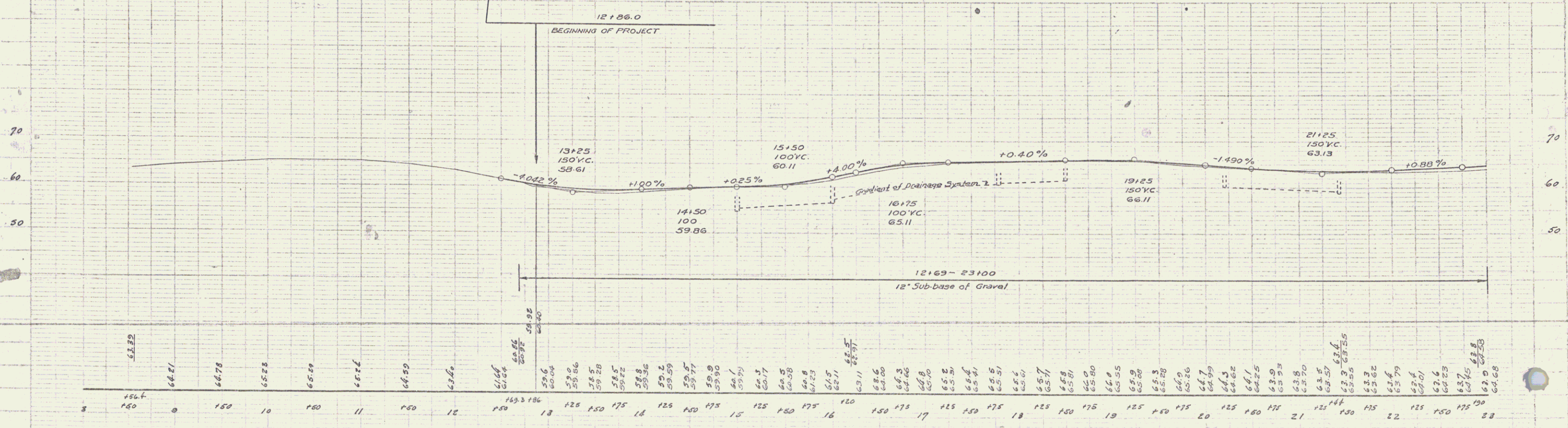


Concrete approach slab Sta 12+69.3 to 12+56.13 to be jacked to proper grade. This to be non-pay item and included in bid price for Common Excavation including Borrow

See Sheet No 16 for details of construction of drop inlets in village system Sta. 13+75 - Sta. 23+00. Sumps to be constructed in all Drop Inlets in Village System

Any excess cut on the project is to be used or wasted at such locations as ordered by the Engineer.

The Contractor will be required to pay particular attention to the saving of trees along the sides of the proposed highway and will not be permitted to cut or destroy any tree except as ordered by the Engineer.

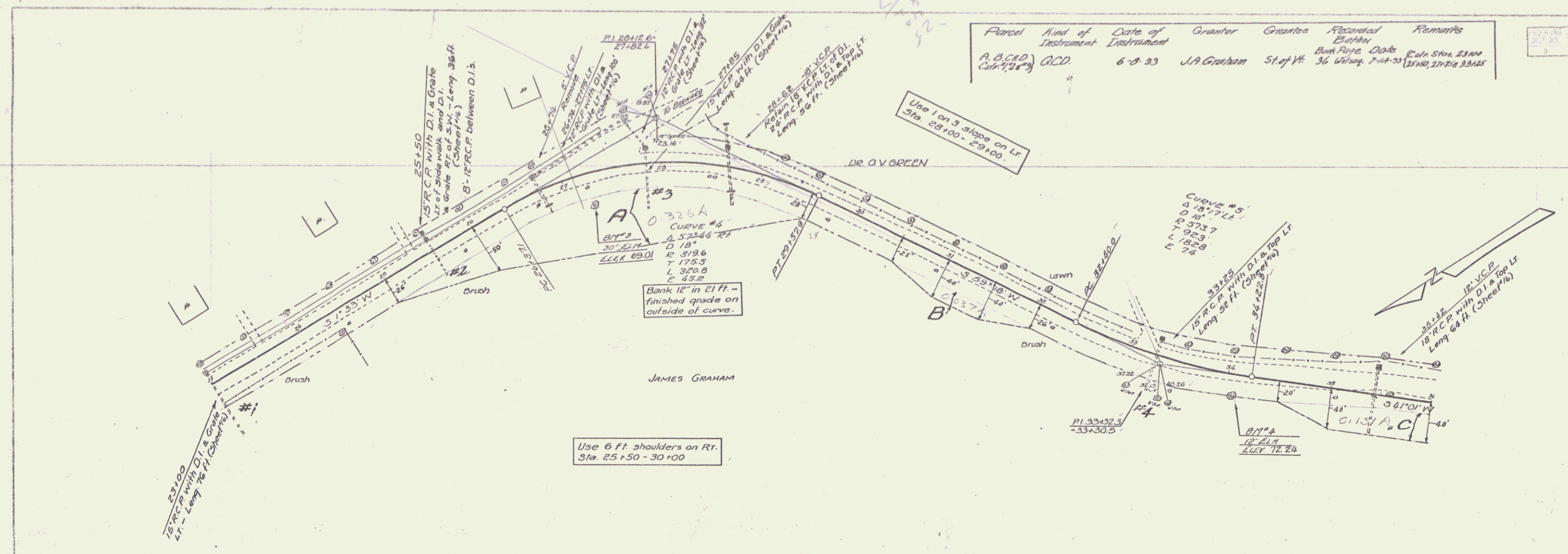


D.M. #1 SPOT ON CONCRETE BRIDGE ABUTMENT 175 FT RT OF STA 12+69.3 ELEV 61.75
D.M. #2 SPOT ON CONCRETE RETAINING WALL 38 FT RT OF STA 20+67 ELEV 62.90

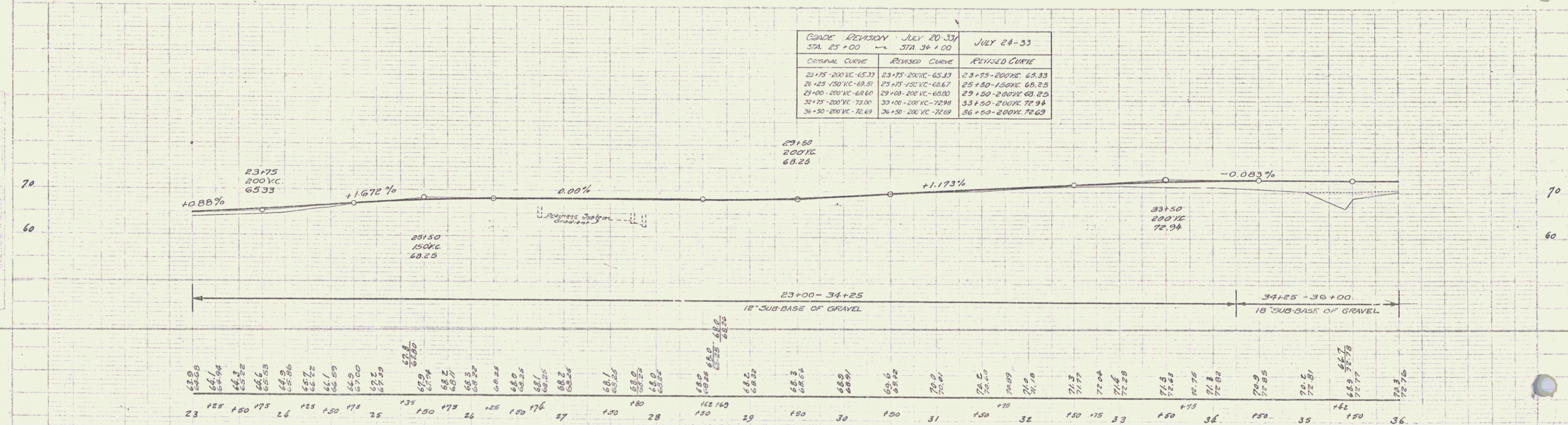
DETAIL 10M SHEET 4 OF 8

Parcel	Kind of Instrument	Date of Instrument	Grantor	Grantee	Recorded Book	Remarks
A, B, C, D	G.C.D.	6-8-33	J.A. Graham	St. of Yt.	36 Wiley, 7-11-33	Elev. Sta. 2144 (2140, 2142, 2145)

101-M 1933 5 48



GRADE REVISION - JULY 20-31		JULY 24-33	
STA. 25+00	STA. 34+00	STA. 34+00	STA. 36+00
Original Curve	Revised Curve	Revised Curve	Revised Curve
23+75-200'VC-65.33	23+75-200'VC-65.33	23+75-200'VC-65.33	23+75-200'VC-65.33
24+25-100'VC-69.50	25+75-100'VC-68.67	25+20-150'VC-68.25	25+20-150'VC-68.25
29+00-200'VC-68.60	29+00-200'VC-68.00	29+20-200'VC-68.25	29+20-200'VC-68.25
32+75-200'VC-73.00	33+00-200'VC-72.99	33+50-200'VC-72.94	33+50-200'VC-72.94
36+50-200'VC-72.69	36+50-200'VC-72.69	36+50-200'VC-72.69	36+50-200'VC-72.69

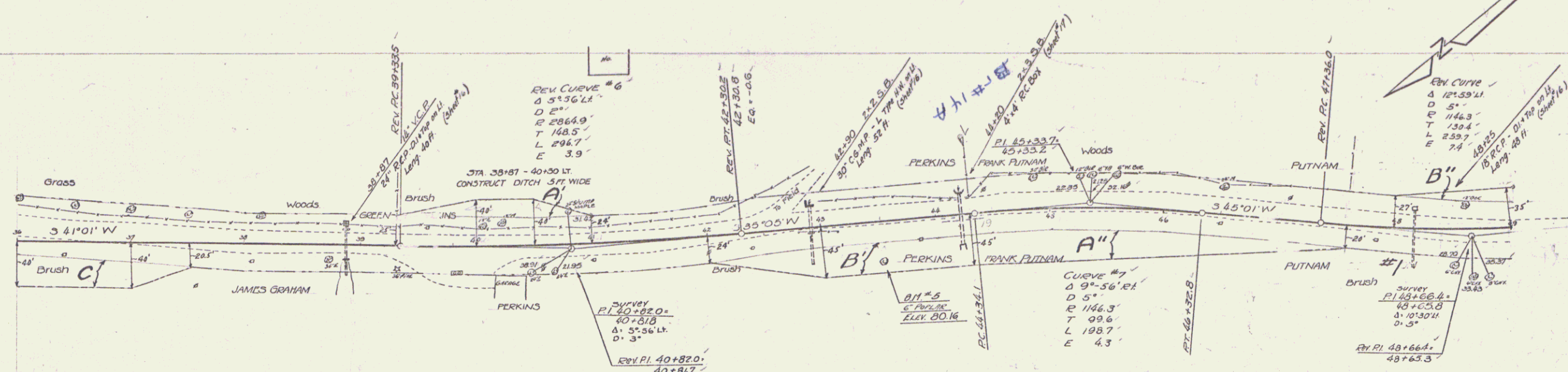


BM #3 SPIKE IN TRUNK OF 24' ELM 20 FT RT OF STA 27+34 ELEV 69.01
 BM #4 SPIKE IN ROOT OF 12' ELM 18 FT RT OF STA 34+05 ELEV 72.24

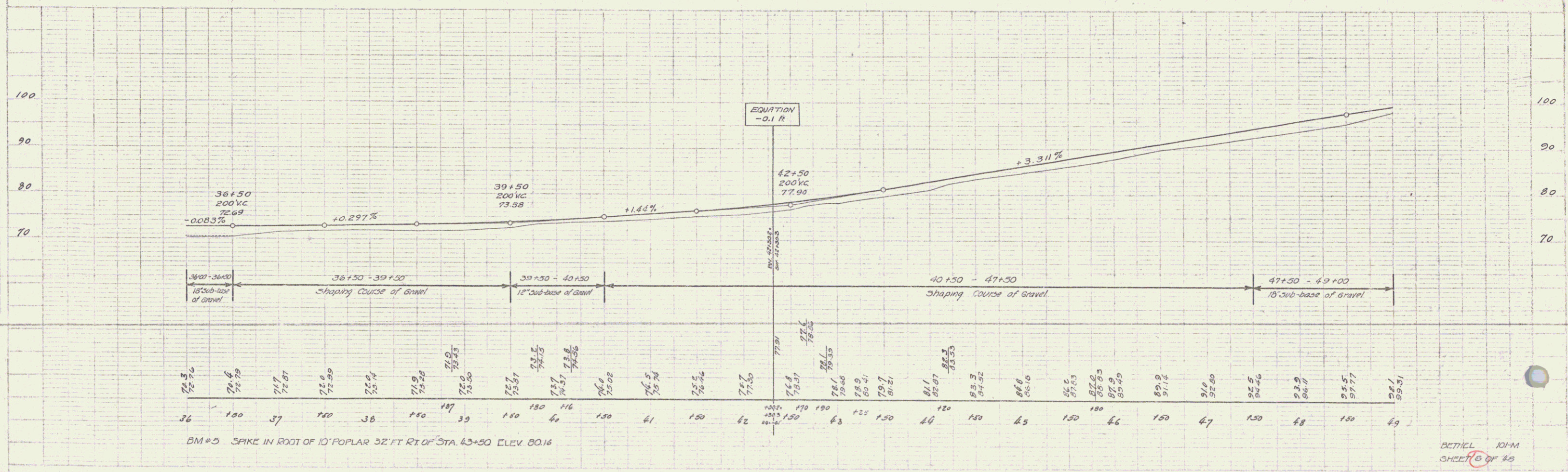
D.UTHEL XI-M
 SHEET 5 OF 48

Parcel	Kind of Instrument	Date of Instrument	Grantor	Grantee	Recorded Book Page	Remarks
C	G.C.D.	6-8-33	J.A. Graham	St. of H.	36 67	7-14-33
A B'	"	6-8-33	M.H. Perkins	"	36 73	7-14-33
A-B-C-W-Y	"	6-13-33	F.H. Putnam	"	36 75	7-14-33 Calr. Sta. A B C D

REVISED STATE ROAD DIST. NO. 101-M 1933 6 60



Note:-
Sta 48+00 to 51+50
use 4% slope left



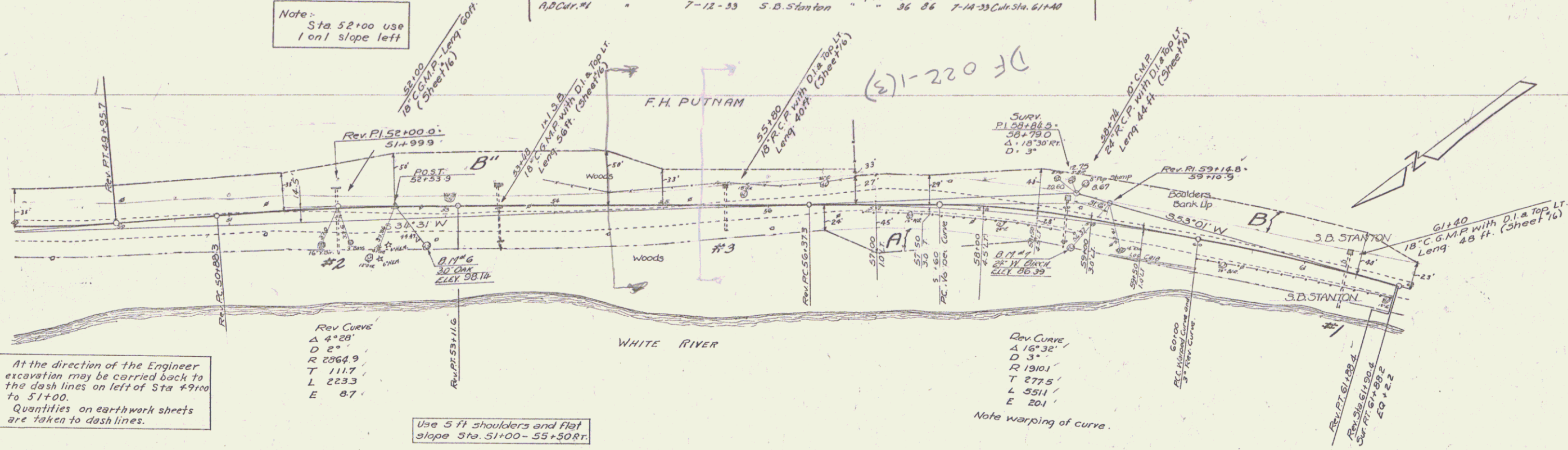
BM #5 SPIKE IN ROOT OF 10' POPLAR 32' FT RT OF STA. 43+50 ELEV. 80.16

DETAIL 101-M SHEET B OF 40

Parcel	Kind of Instrument	Date of Instrument	Grantor	Grantee	Recorded	Remarks
B244743	Q.C.D.	6-15-33	F.H. Putnam	St of Yt.	36 75	7-14-33 Cdn Sta. 5140.55180
A.D. Cur. #1		7-12-33	S. D. Stanton		36 86	7-14-33 Cdn Sta. 61140

STATE ROAD LOCAL SHEET NO. 101-11 1933 7 48

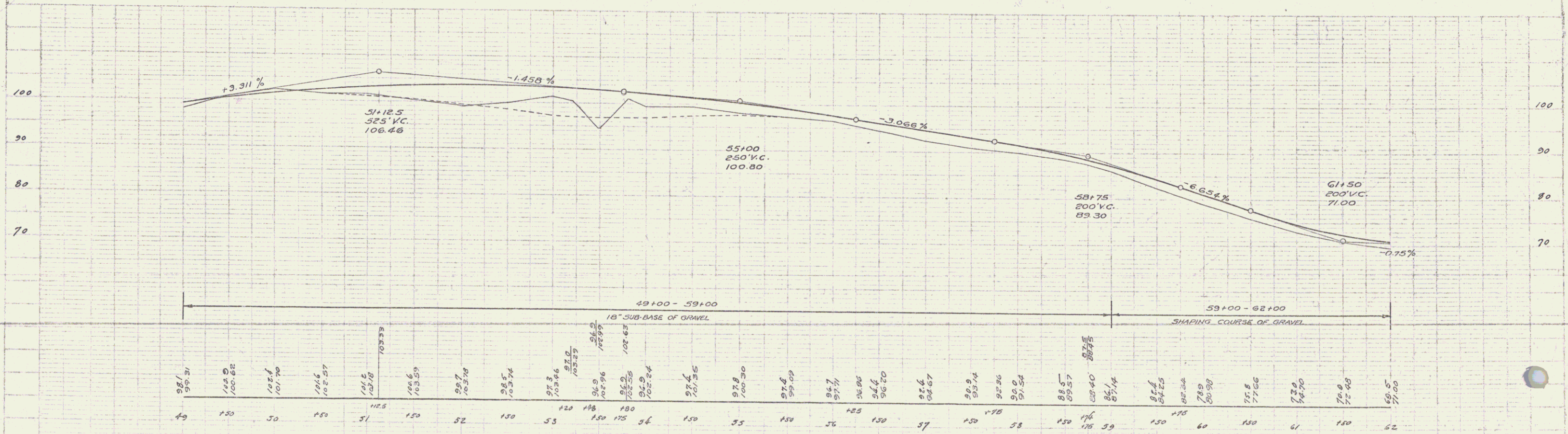
Note: Sta 52+00 use 1 on 1 slope left



At the direction of the Engineer excavation may be carried back to the dash lines on left of Sta #9+00 to 51+00. Quantities on earthwork sheets are taken to dash lines.

Rev. Curve
 A 4°20'
 D 8"
 R 2064.9
 T 111.7
 L 223.3
 E 8.7'

Rev. Curve
 A 16°32'
 D 3"
 R 1910.1
 T 277.5
 L 551.1
 E 20.1'

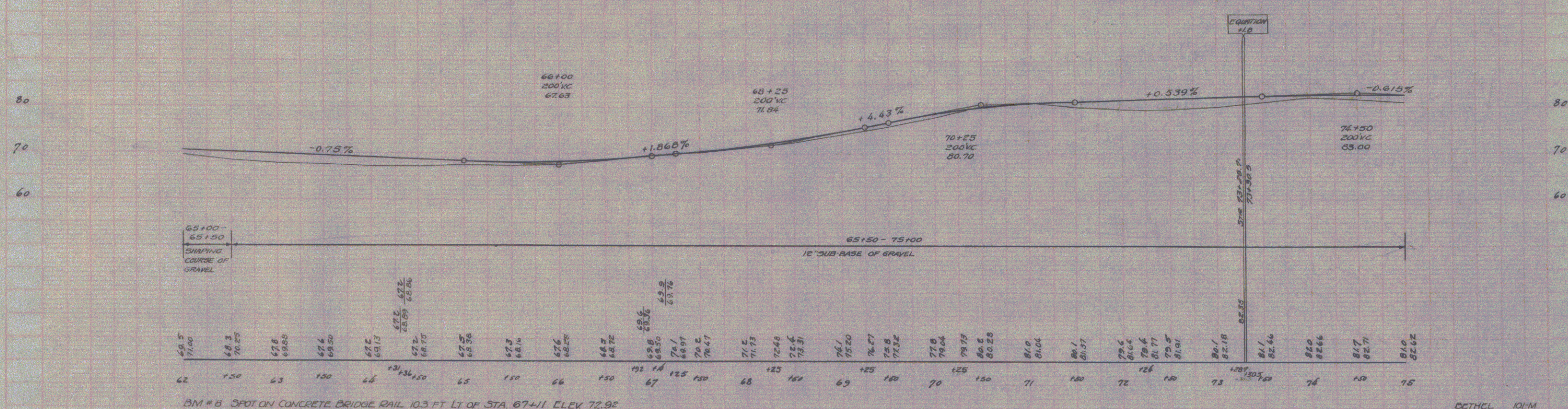
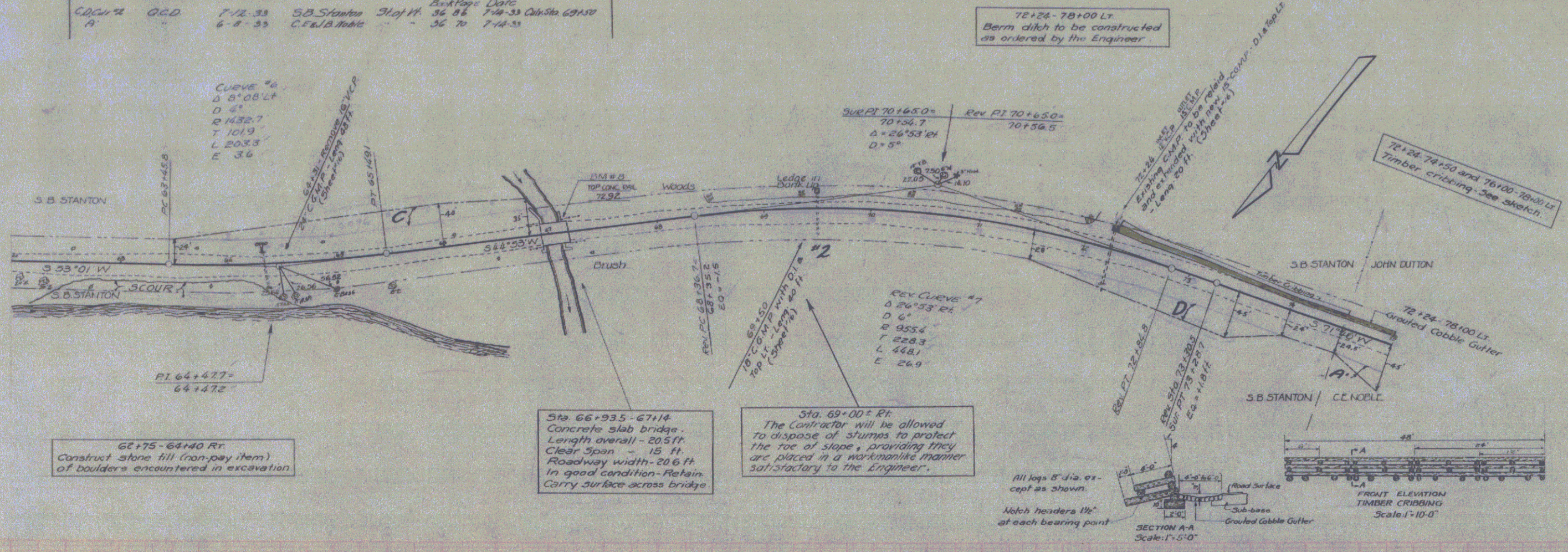


BM #6 SPIKE IN TRUNK OF 30" OAK 22 FT. RT. OF STA. 52+00 ELEV. 98.18
 BM #7 SPIKE IN TRUNK OF 18" WHITE BIRCH 23 FT. RT. OF STA. 59+82 ELEV. 86.39

BETHCL 10-M SHEET 7 OF 48

Record	Kind of Instrument	Date of Instrument	Owner	Graphic	Rescaled	Remarks
C.C. W. 2	O.C.D.	7-12-33	S.B. Stanton	3/4" = 1'	36.75	194-33 Cdn Sta 69.50
A	"	6-8-33	C.F. & B. 1044	"	36.70	7-14-33

NO. 101	STATE	PROJ. NO.	YEAR	SHEET NO.
1	101-M	101-M	1933	6

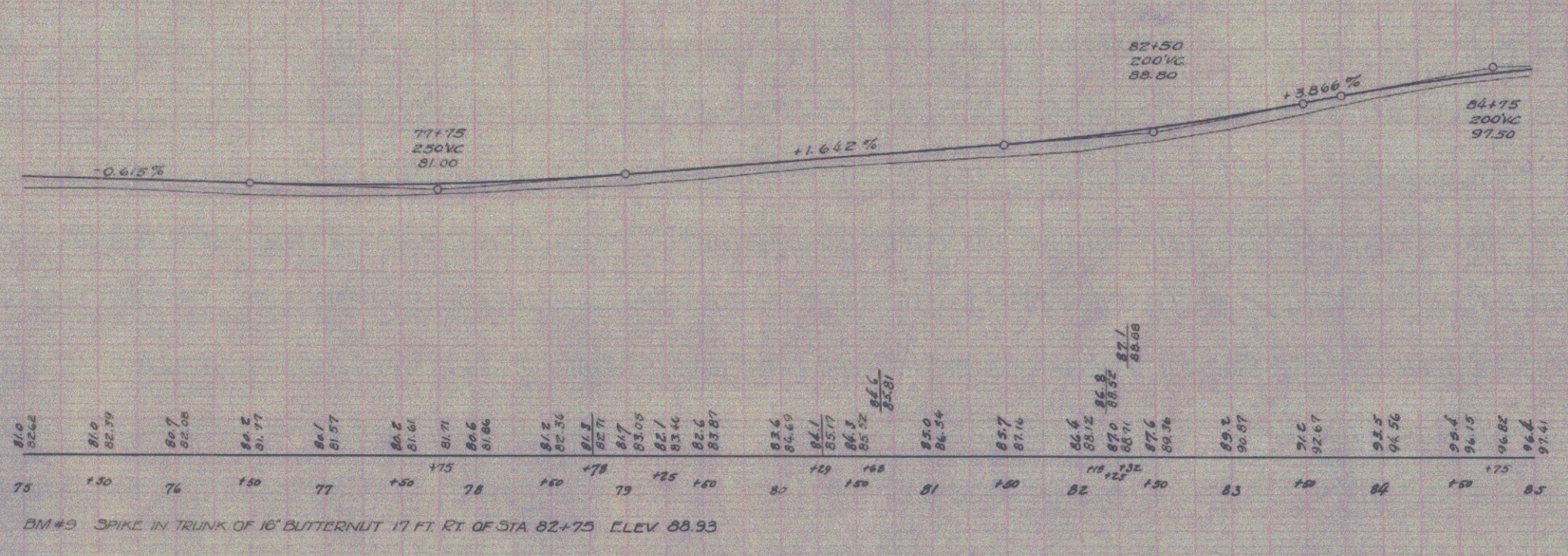
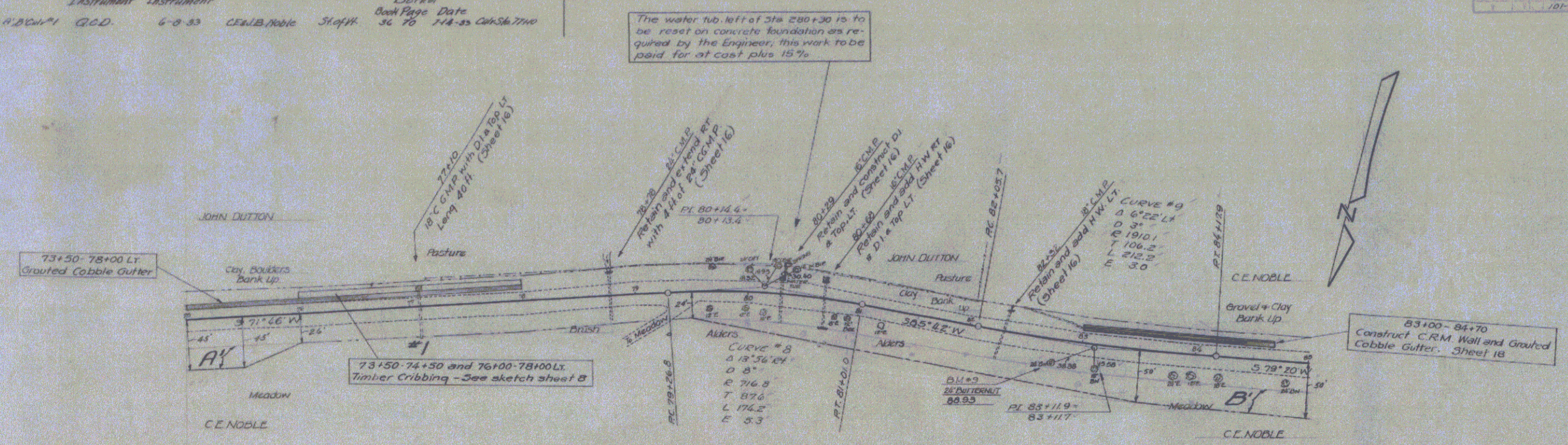


DETHEL 101-M
SHEET 6 OF 40

60

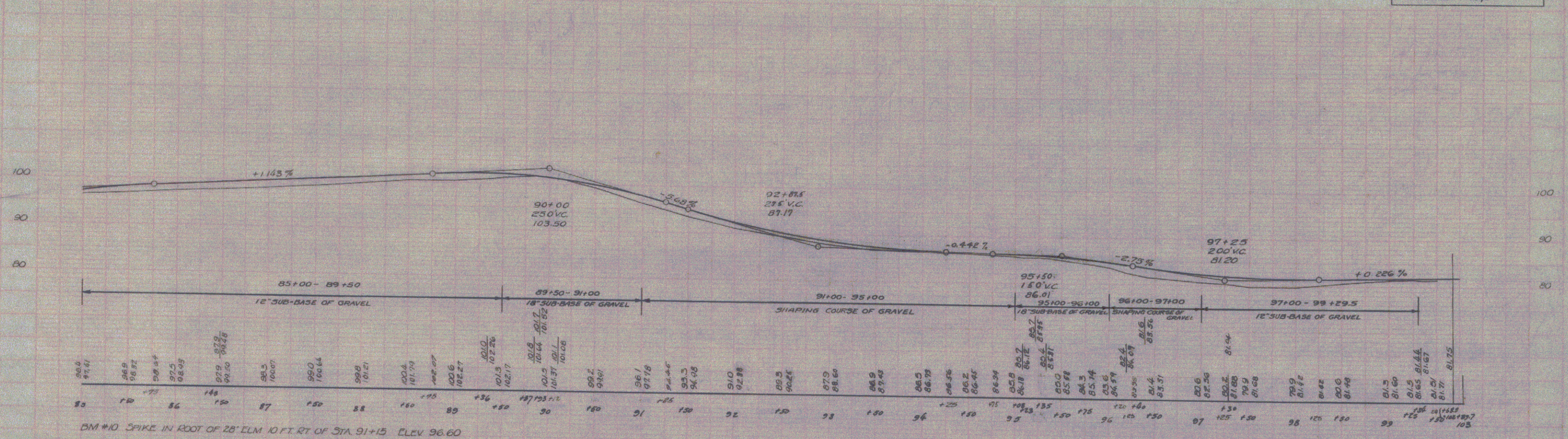
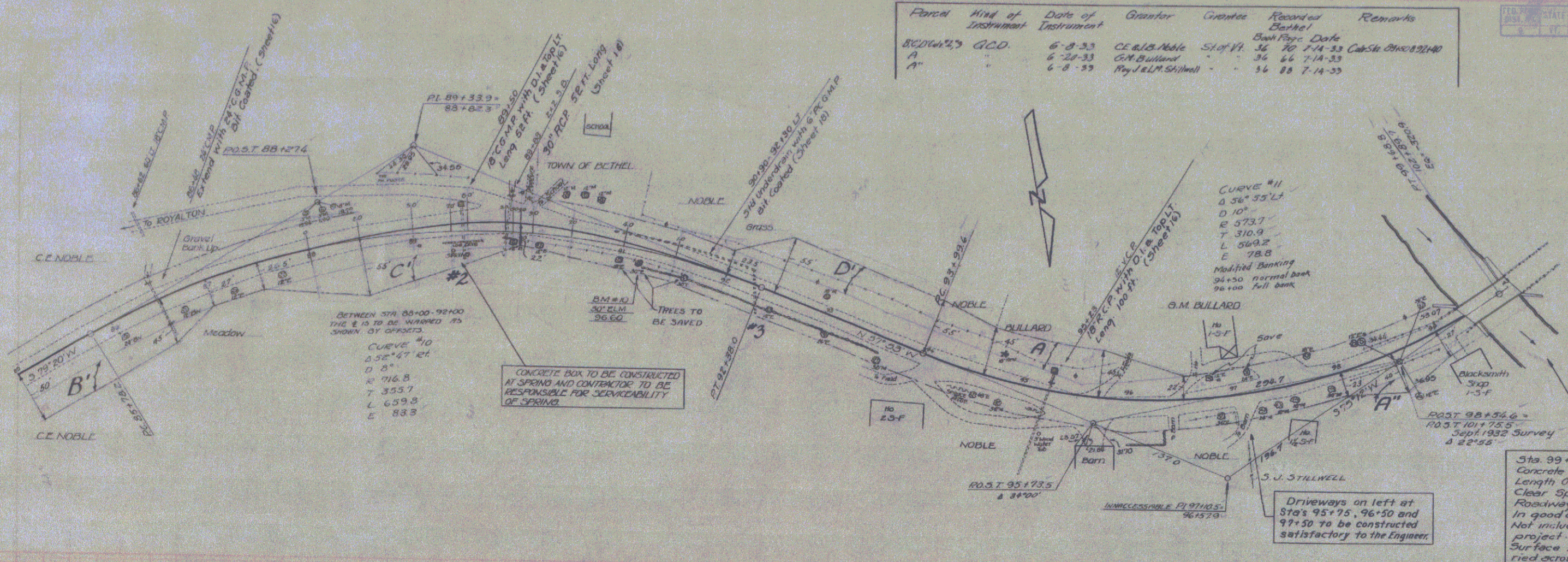
Parcel	Kind of Instrument	Date of Instrument	Grantor	Grantee	Recorded Book Page	Date	Remarks
A.B.C. #1	G.C.D.	6-8-83	CEN/B/ROBE	STAFF	36	78	114-35 C&S 2740

DATE	BY	REVISION
10-1-83	M	1



Parcel	Kind of Instrument	Date of Instrument	Grantor	Grantee	Recorded Book	Recorded Date	Remarks
BEDFORD'S G.C.D.		6-8-33	C.E. & L. Noble	State of Vt.	36 70	7-14-33	Case No. 892140
A		6-20-33	G.M. Bullard		36 66	7-14-33	
A		6-8-33	Ray J. M. Stillwell		36 88	7-14-33	

101-M 1933 10 60



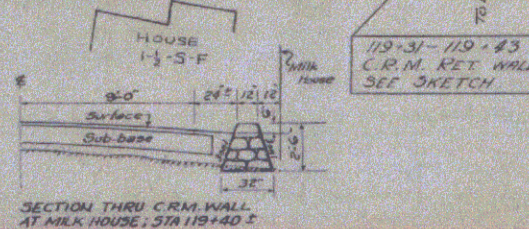
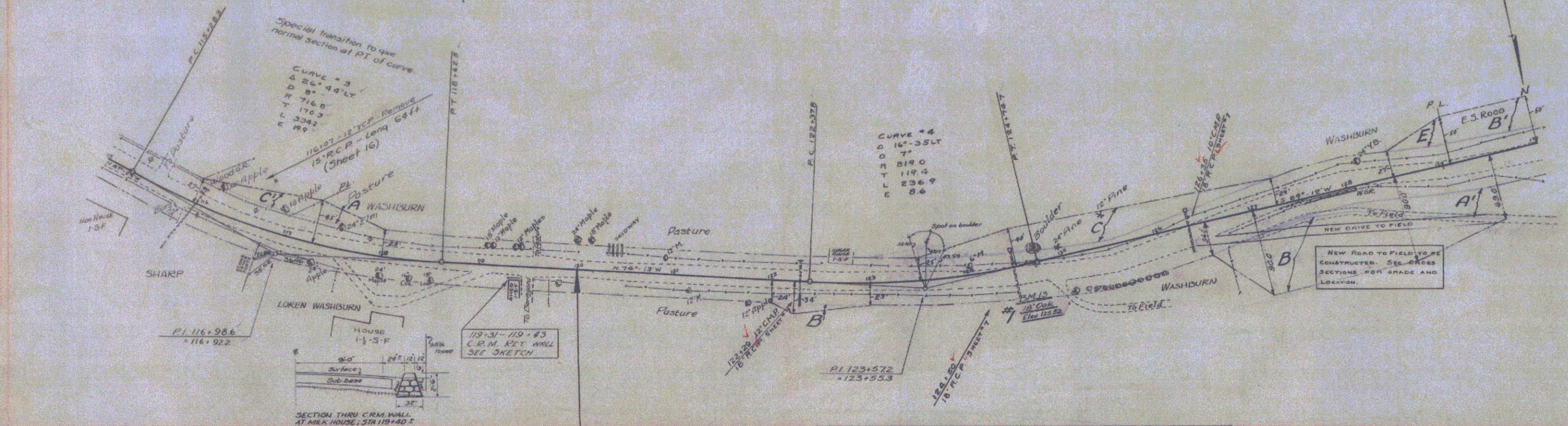
B.M. #10 SPIKE IN ROOT OF 28" ELM 10 FT. RT. OF STA. 91+13 ELEV. 96.60

BETHEL 10-M SHEET 10 OF 48

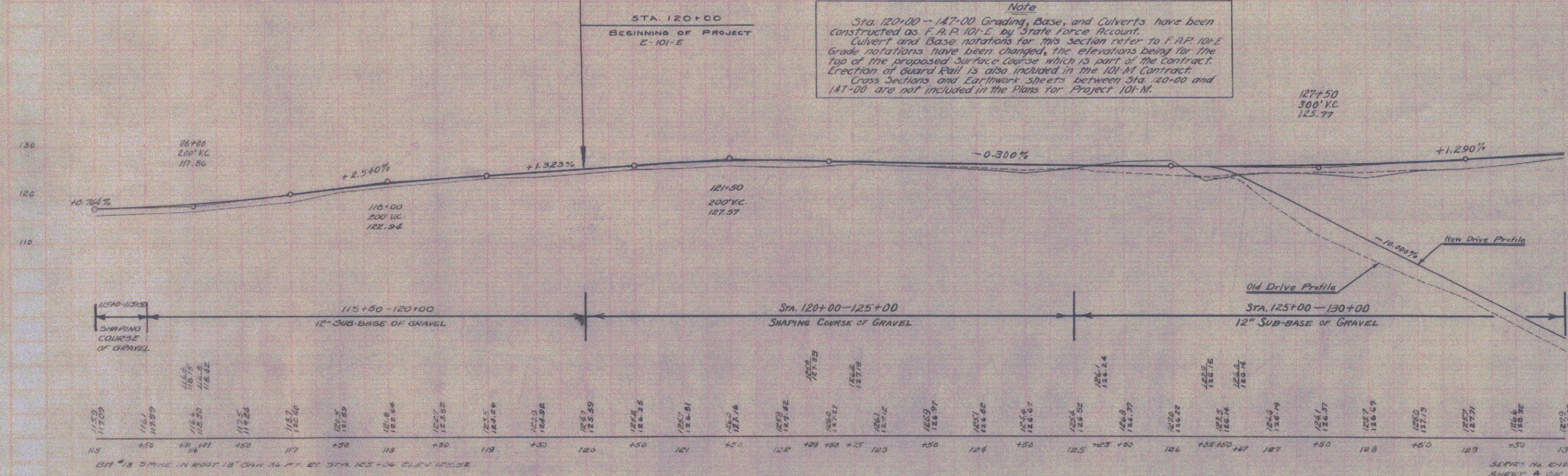
8

Parcel	Kind of Instrument	Date of Instrument	Grantor	Grantee	Recorded Book Page	Remarks
C	A.C.D.	7-6-33	John W. Sharpe	State	56 84	7-14-33
A,B,C,D,E		6-22-33	Washburn		56 83	7-14-33
A,B		6-22-33	SEALB Road		56 79	7-14-33

DATE	BY	REVISION
101-E 1932	G	10
101-M 1933	W	48



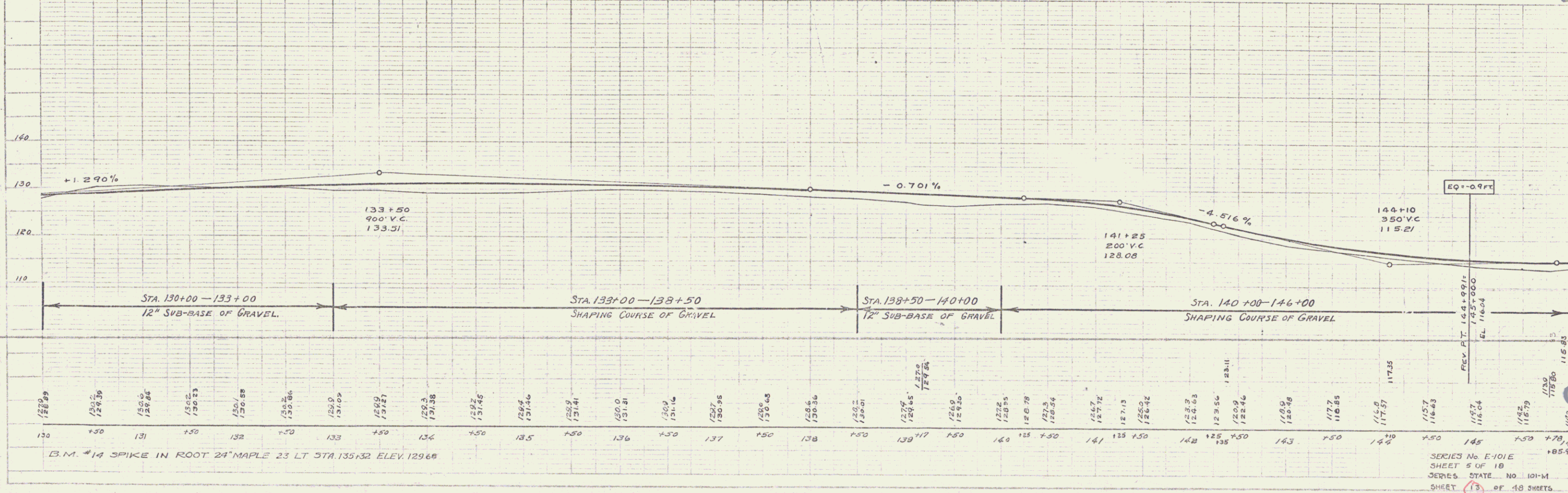
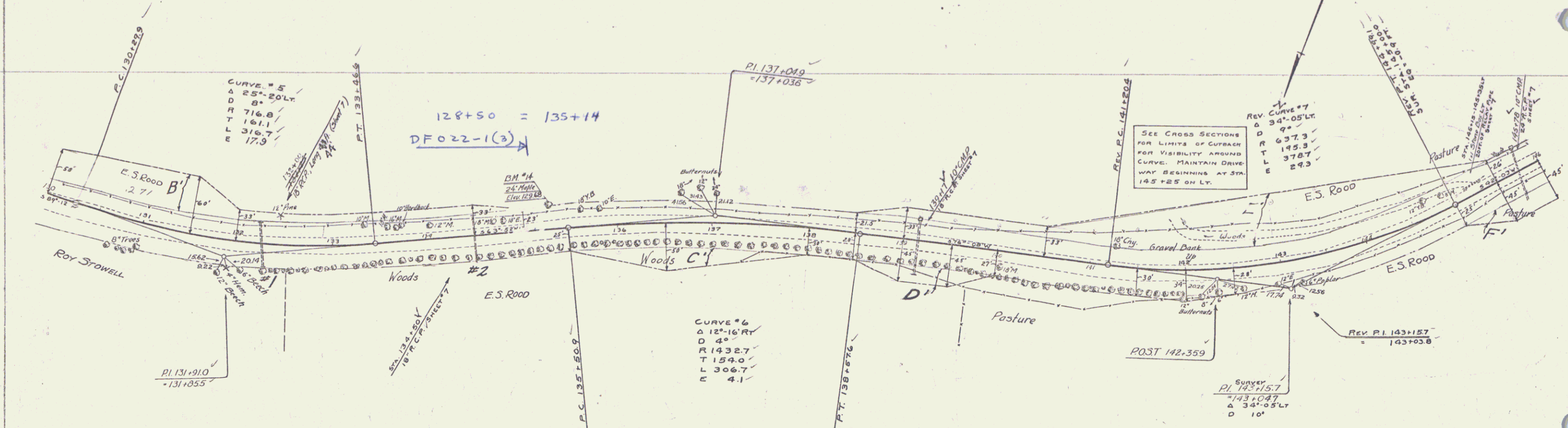
Note
 Sta. 120+00 - 147+00 Grading, Base, and Culverts have been constructed as F.A.P. 101-E by State Force Account. Culvert and Base notations for this section refer to F.A.P. 101-E. Grade notations have been changed, the elevations being for the top of the proposed surface course which is part of the contract. Erection of Guard Rail is also included in the 101-M Contract. Cross Sections and Earthwork sheets between Sta. 120+00 and 147+00 are not included in the Plans for Project 101-M.



SERIES NO. C-101-E
 SHEET 4 OF 18
 SERIES STATE NO. 101M
 SHEET 12 OF 48 SHEETS

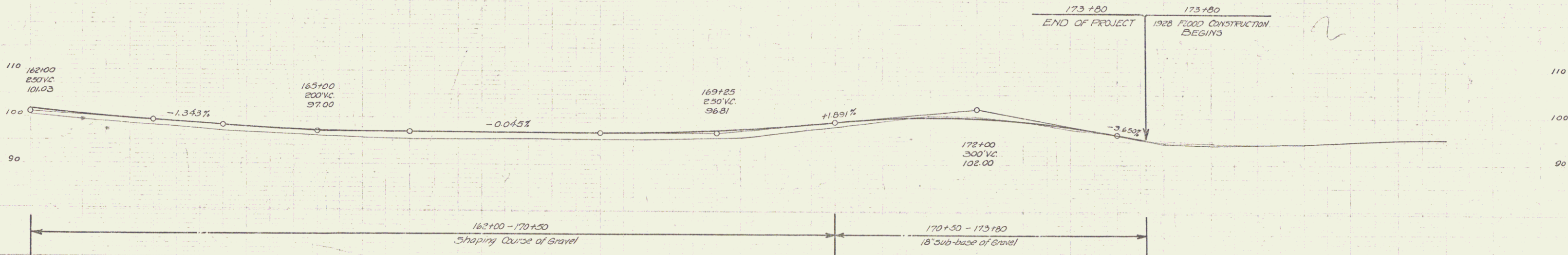
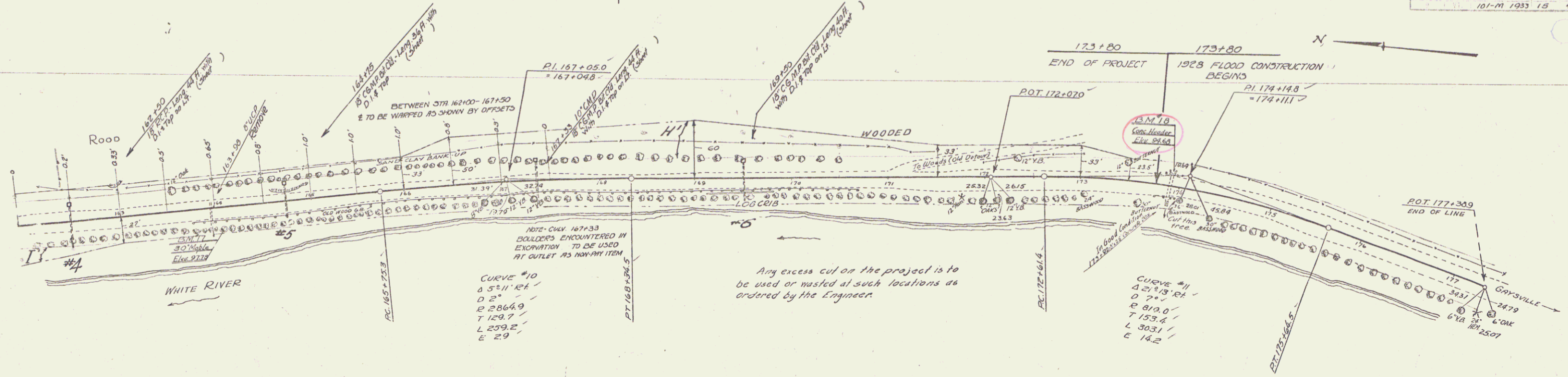
Parcel	Kind of Instrument	Date of Instrument	Grantor	Grantee	Recorded	Remarks
B, C, D, E, F	R.C.D.	6-22-33	SEBIA Road	Shof. YH	36	7th Reg. 7-14-33 Calc. Sta 131+25.8

FED. ROAD DIST. NO.	STATE	FED. AID PROJ. NO.	FISCAL YEAR	SHEET NO.	TOTAL SHEETS
9	VT.	E-101-E	1932	5	78
9	VT.	101-M	1933	13	48



Parcel	Kind of Instrument	Date of Instrument	Grantor	Grantee	Recorded Book/Sheet	Remarks
N.1211138	Q.C.D.	6-22-33	SEALB. Road	Stoffyt	36 75/100, 7-14-33	Cub. 56, 162, 150, 141, 75, 162, 150

INDIAN STATE HIGHWAY DEPARTMENT
 DIVISION OF HIGHWAYS
 101-M 1933 15 48



Station	Elevation
162+00	101.72
162+10	101.72
162+20	101.72
162+30	101.72
162+40	101.72
162+50	101.72
162+60	101.72
162+70	101.72
162+80	101.72
162+90	101.72
163+00	101.72
163+10	101.72
163+20	101.72
163+30	101.72
163+40	101.72
163+50	101.72
163+60	101.72
163+70	101.72
163+80	101.72
163+90	101.72
164+00	101.72
164+10	101.72
164+20	101.72
164+30	101.72
164+40	101.72
164+50	101.72
164+60	101.72
164+70	101.72
164+80	101.72
164+90	101.72
165+00	101.72
165+10	101.72
165+20	101.72
165+30	101.72
165+40	101.72
165+50	101.72
165+60	101.72
165+70	101.72
165+80	101.72
165+90	101.72
166+00	101.72
166+10	101.72
166+20	101.72
166+30	101.72
166+40	101.72
166+50	101.72
166+60	101.72
166+70	101.72
166+80	101.72
166+90	101.72
167+00	101.72
167+10	101.72
167+20	101.72
167+30	101.72
167+40	101.72
167+50	101.72
167+60	101.72
167+70	101.72
167+80	101.72
167+90	101.72
168+00	101.72
168+10	101.72
168+20	101.72
168+30	101.72
168+40	101.72
168+50	101.72
168+60	101.72
168+70	101.72
168+80	101.72
168+90	101.72
169+00	101.72
169+10	101.72
169+20	101.72
169+30	101.72
169+40	101.72
169+50	101.72
169+60	101.72
169+70	101.72
169+80	101.72
169+90	101.72
170+00	101.72
170+10	101.72
170+20	101.72
170+30	101.72
170+40	101.72
170+50	101.72
170+60	101.72
170+70	101.72
170+80	101.72
170+90	101.72
171+00	101.72
171+10	101.72
171+20	101.72
171+30	101.72
171+40	101.72
171+50	101.72
171+60	101.72
171+70	101.72
171+80	101.72
171+90	101.72
172+00	101.72
172+10	101.72
172+20	101.72
172+30	101.72
172+40	101.72
172+50	101.72
172+60	101.72
172+70	101.72
172+80	101.72
172+90	101.72
173+00	101.72
173+10	101.72
173+20	101.72
173+30	101.72
173+40	101.72
173+50	101.72
173+60	101.72
173+70	101.72
173+80	101.72
173+90	101.72
174+00	101.72
174+10	101.72
174+20	101.72
174+30	101.72
174+40	101.72
174+50	101.72
174+60	101.72
174+70	101.72
174+80	101.72
174+90	101.72
175+00	101.72
175+10	101.72
175+20	101.72
175+30	101.72
175+40	101.72
175+50	101.72
175+60	101.72
175+70	101.72
175+80	101.72
175+90	101.72
176+00	101.72
176+10	101.72
176+20	101.72
176+30	101.72
176+40	101.72
176+50	101.72
176+60	101.72
176+70	101.72
176+80	101.72
176+90	101.72
177+00	101.72

BM #12 SPIKE IN TRUNK 30' N.W. CORNER OF 37A 163+00-164+00 92.79
 87.26 N73+16+13.11 W. 18.3 FT. 43' 37A 173+90-174+00 92.79
 (P. 40 & 41 B. 070)