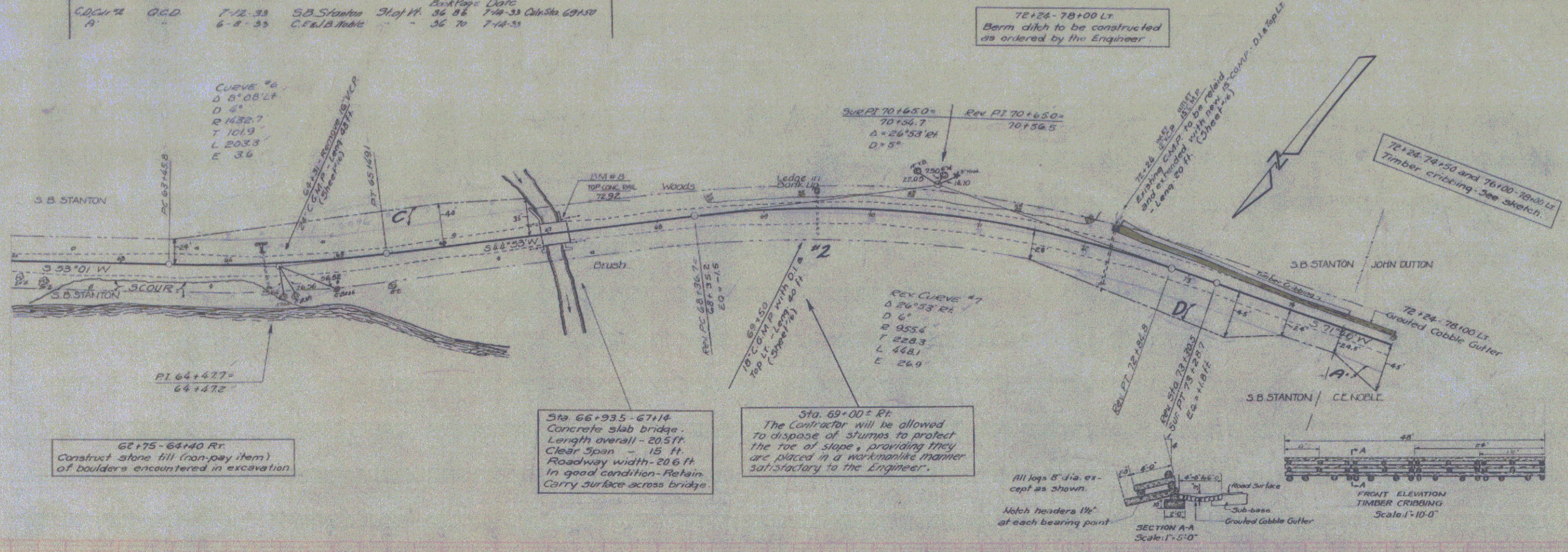


Record	Kind of Instrument	Date of Instrument	Owner	Graphic	Rescaled	Remarks
C.O. 1072	O.C.D.	7-12-33	S.B. Stanton	3/16" Ht.	36.88	194-33 Cdn Sta 69150
A	"	6-8-33	C.F. & B. 1044	"	36.70	7-14-33

NO. 1072	STATE	PROJ. NO.	YEAR	SHEET NO.
1072	1072	1072	1933	66



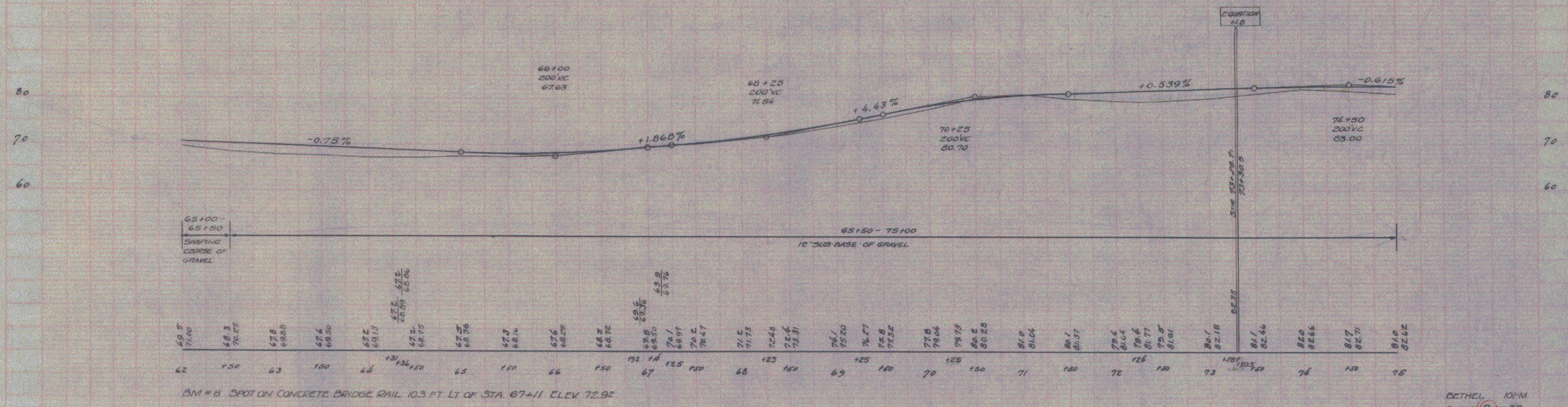
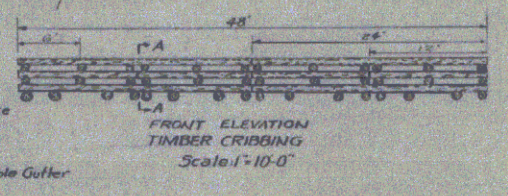
66+75-64+40 Rt.  
Construct stone fill (non-pay item)  
of boulders encountered in excavation

Sta. 66+93.5-67+14  
Concrete slab bridge.  
Length overall - 20.51 ft.  
Clear span - 15 ft.  
Roadway width - 20.6 ft.  
In good condition - Retain.  
Carry surface across bridge.

Sta. 69+00 ± Ft.  
The Contractor will be allowed  
to dispose of stumps to protect  
the toe of slope, providing they  
are placed in a workmanlike manner  
satisfactory to the Engineer.

72+24-78+00 Lt.  
Berm ditch to be constructed  
as ordered by the Engineer

SECTION A-A  
Scale: 1" = 5'-0"  
All logs 8" dia. except as shown.  
Notch headers 12" at each bearing point.



BM # B SPOT ON CONCRETE BRIDGE RAIL 10.3 FT. LT. OF STA. 67+11 ELEV. 72.92

DETHEL 10-M  
SHEET 1072 #6

66