

BETHEL - STOCKBRIDGE 101 C. SHEET 4.

WOOD GUARD RAIL REQUIRED

OFF LEFT
Sta 12+00 to Sta 13+12 Length 24 ft
- 12+00 - 12+12 24 ft
- 22+78 - 22+102 24 ft
- 21+53 - 21+81 24 ft
- 25+36 - 25+62 24 ft

OFF RIGHT

Sta 25+36 to Sta 25+62 Length 24 ft

OFF LEFT

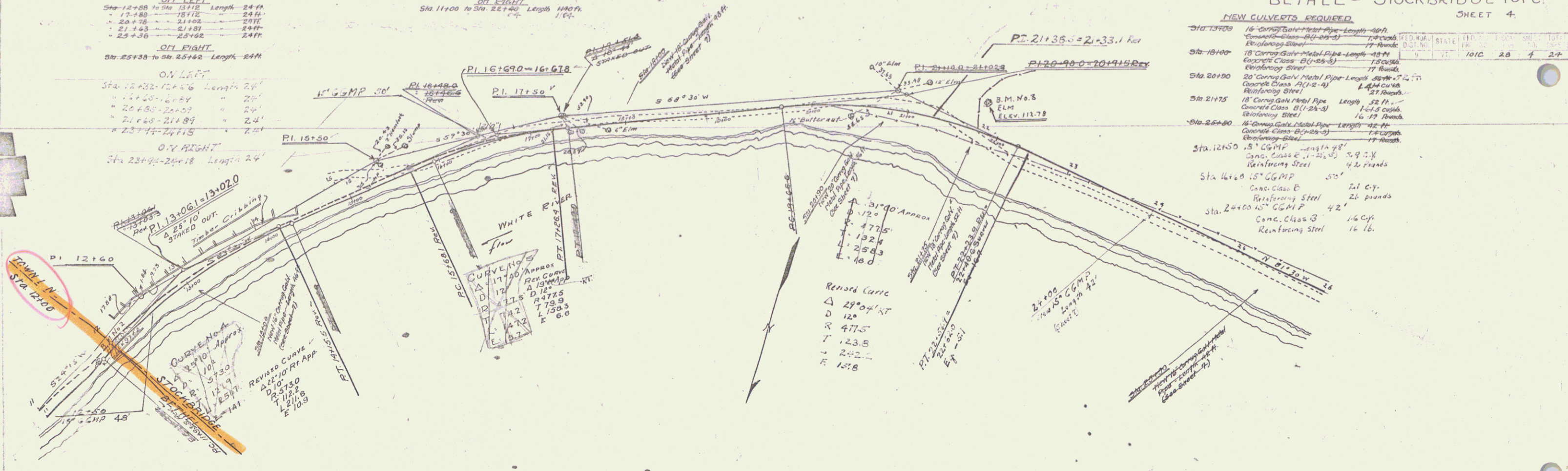
Sta 12+32 to Sta 12+56 Length 24 ft
- 12+32 - 12+56 24 ft
- 22+85 - 22+09 24 ft
- 21+65 - 21+89 24 ft
- 23+44 - 23+68 24 ft

OFF RIGHT

Sta 23+72 to Sta 24+18 Length 24 ft

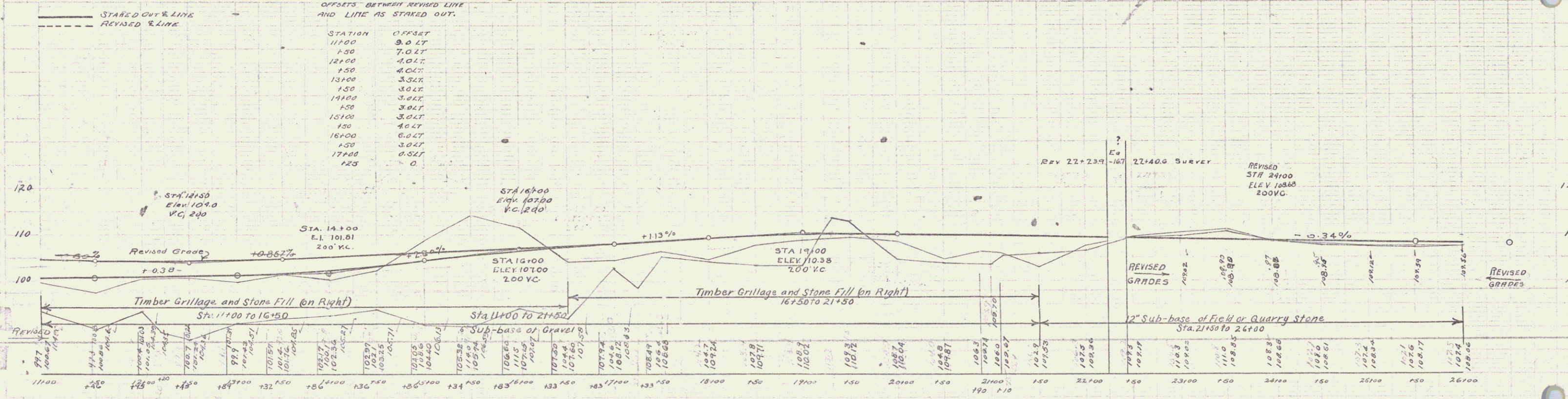
CABLE GUARD RAIL REQUIRED

OFF LEFT
Sta 11+00 to Sta 22+40 Length 1140 ft



NEW CULVERTS REQUIRED

Sta	Structure	Length	Notes
Sta 12+30	16" Corrugated Metal Pipe	15 ft	Concrete Class B (1-2A-3)
Sta 16+00	18" Corrugated Metal Pipe	15 ft	Concrete Class B (1-2A-3)
Sta 20+00	20" Corrugated Metal Pipe	15 ft	Concrete Class B (1-2A-3)
Sta 21+75	18" Corrugated Metal Pipe	15 ft	Concrete Class B (1-2A-3)
Sta 25+60	16" Corrugated Metal Pipe	15 ft	Concrete Class B (1-2A-3)
Sta 12+50	15" CGMP	5.9 ft	Concrete Class B (1-2A-3)
Sta 16+00	15" CGMP	5.9 ft	Concrete Class B (1-2A-3)
Sta 20+00	15" CGMP	4.2 ft	Concrete Class B (1-2A-3)
Sta 24+00	15" CGMP	4.2 ft	Concrete Class B (1-2A-3)



OFFSETS BETWEEN REVISED LINE AND LINE AS STAKED OUT.

STATION	OFFSET
11+00	3.0 FT
12+00	7.0 FT
13+00	4.0 FT
14+00	3.5 FT
15+00	3.0 FT
16+00	3.0 FT
17+00	3.0 FT
18+00	3.0 FT
19+00	3.0 FT
20+00	3.0 FT
21+00	3.0 FT
22+00	3.0 FT
23+00	3.0 FT
24+00	3.0 FT
25+00	3.0 FT
26+00	3.0 FT

B.M. No. 2 Spike in Hemlock, Right of Sta. 11+75 Elev. 97.62
B.M. No. 3 Spike in Elm, Left of Sta. 21+00 Elev. 112.78

Series F 101 C Sheet 4 of 24