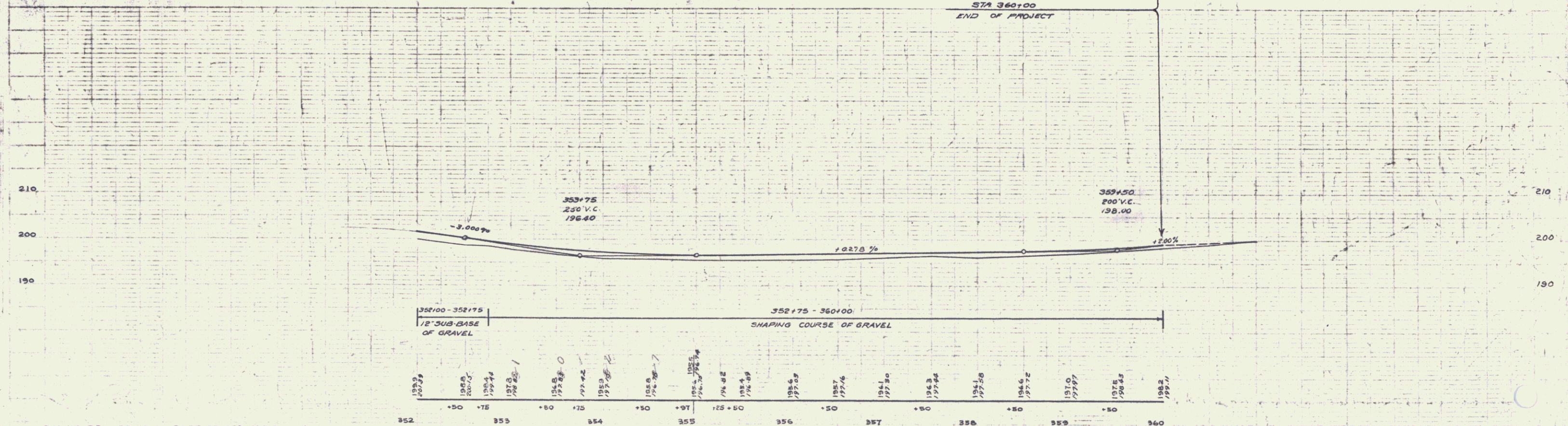
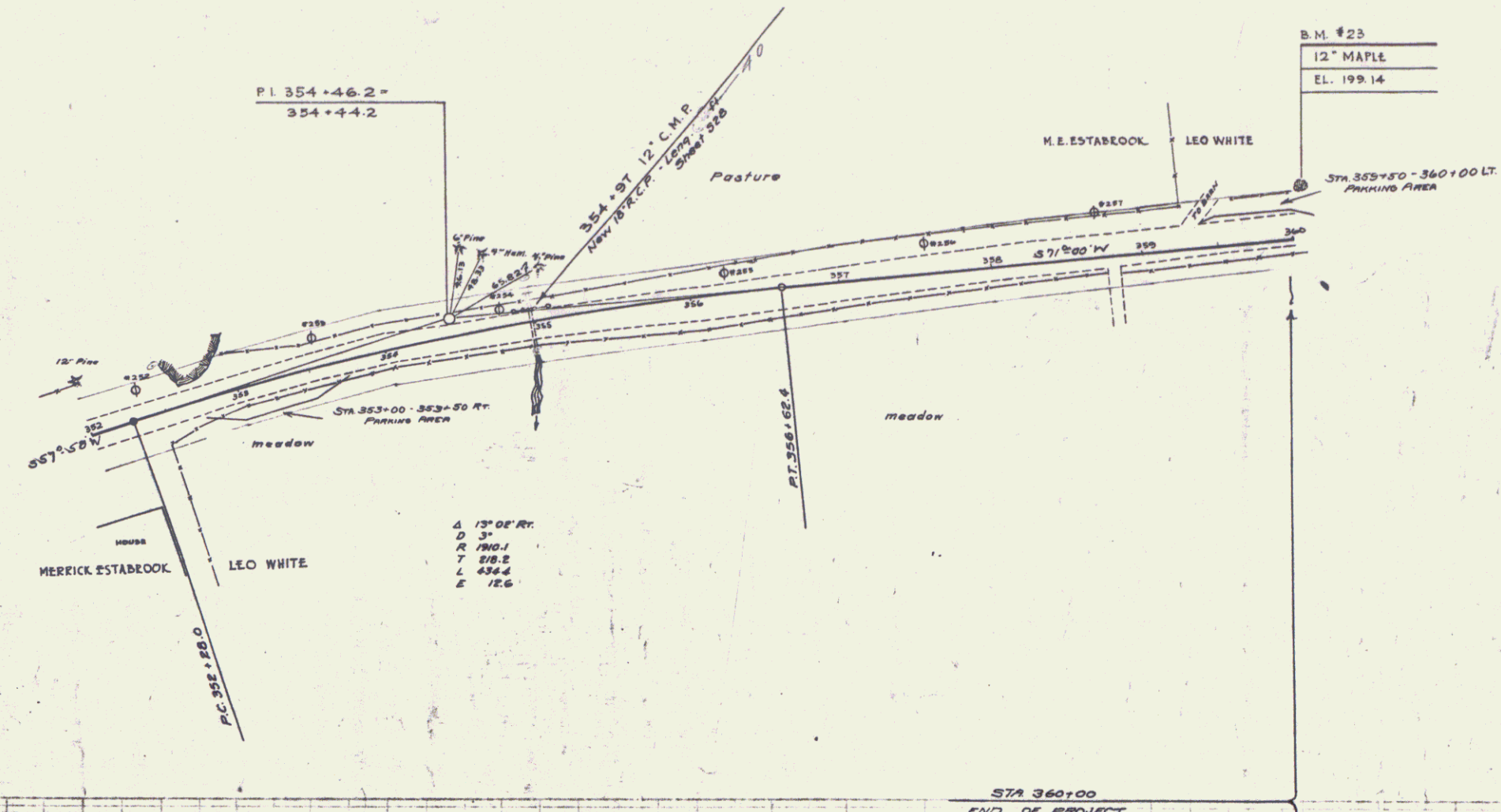


POOR ORIGINAL COPY

10-H 1934 10 50  
(1935)

E. PUTNAM  
G. R. HAYNES  
D. MACCHI  
TRACED



B.M. NO 23 SPIKE IN ROOT OF 12' MAPLE 31' LT. OF STA. 360+05 EL. 199.14

SERIES No 10-H  
SHEET 10 OF 50 1935

9