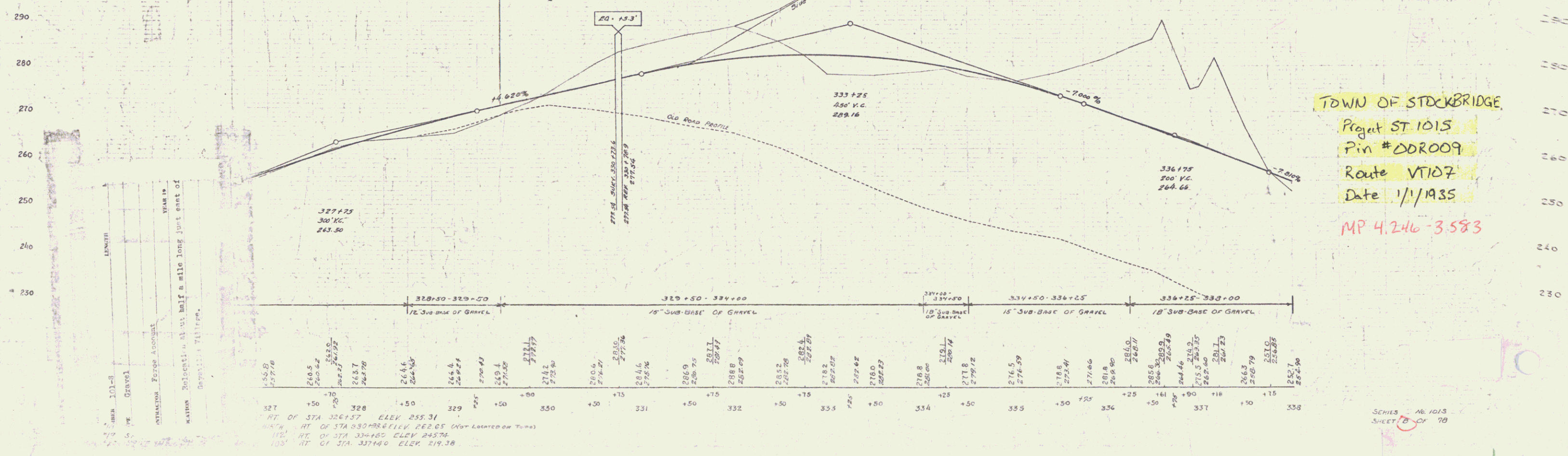


RIGHT-OF-WAY DIVISION
TOWN FILE
PERPETUAL
Town of Stockbridge
(To Be Returned To R.O.W. Division)

Panel	Kind of Dist.	Date of Instrument	Grantor	Grantee	Recorded
A-B	O.C.D.	1-29-34	Wesley J. Mason	Stockbridge	Box 1966 0115
A-D	Q.C.D.	5-14-34	Alma Trask	Stockbridge	Box 200 2-1-34



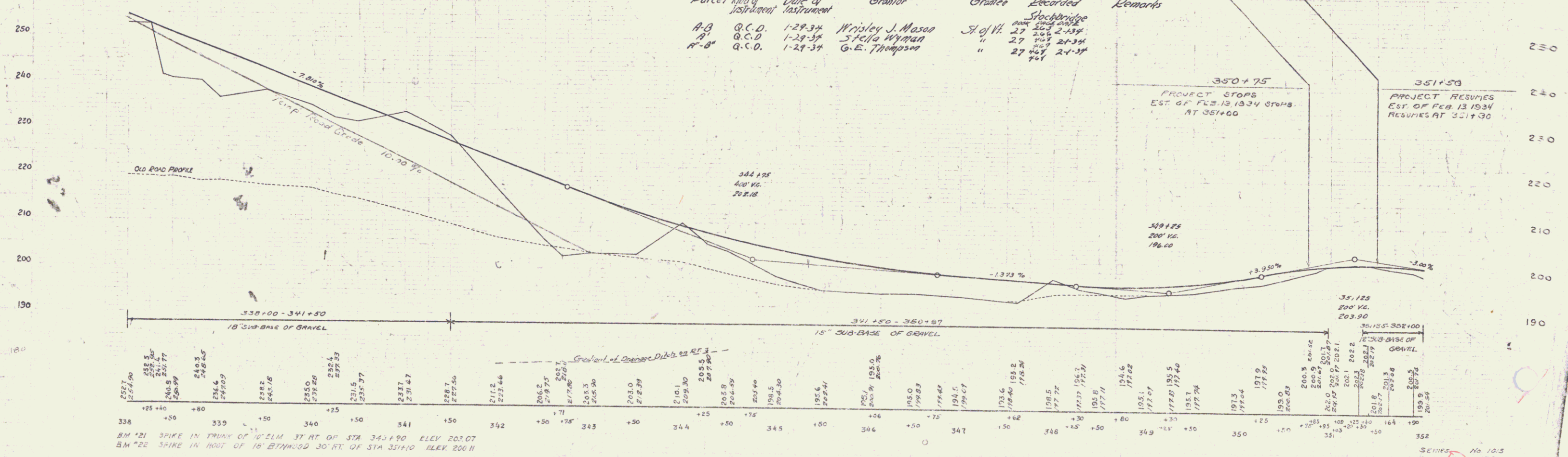
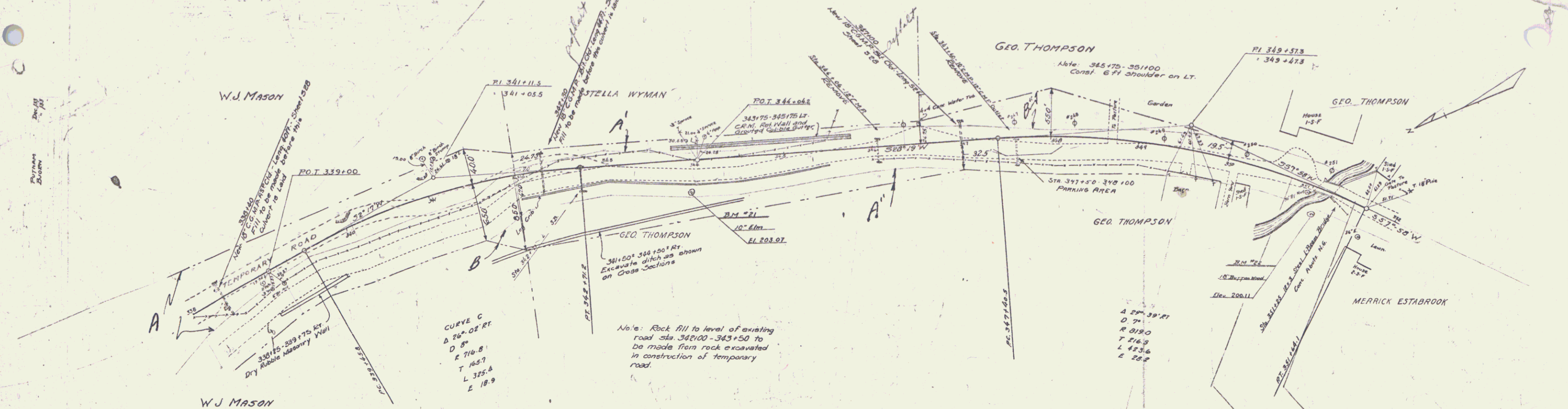
TOWN OF STOCKBRIDGE
Project ST 1015
Pin # DD0009
Route VT107
Date 1/1/1935
MP 4.246-3.583

STATION	LENGTH	TYPE	GRAVEL	OTHER
327+00	100	GRAVEL		

RT OF STA 326+57 ELEV 255.31
HT OF STA 330+00 ELEV 245.74
HT OF STA 331+00 ELEV 243.74
HT OF STA 331+00 ELEV 219.38

343+75-345+75 LT. GRAVELLED CRIBLE GUTTER 56 C.Y.
 343+75-345+75 LT. CEMENT RUBBLE MASSUREY 22.2 C.Y.
 338+25-339+75 RT. DRY " " 102 C.Y.

1015 1934

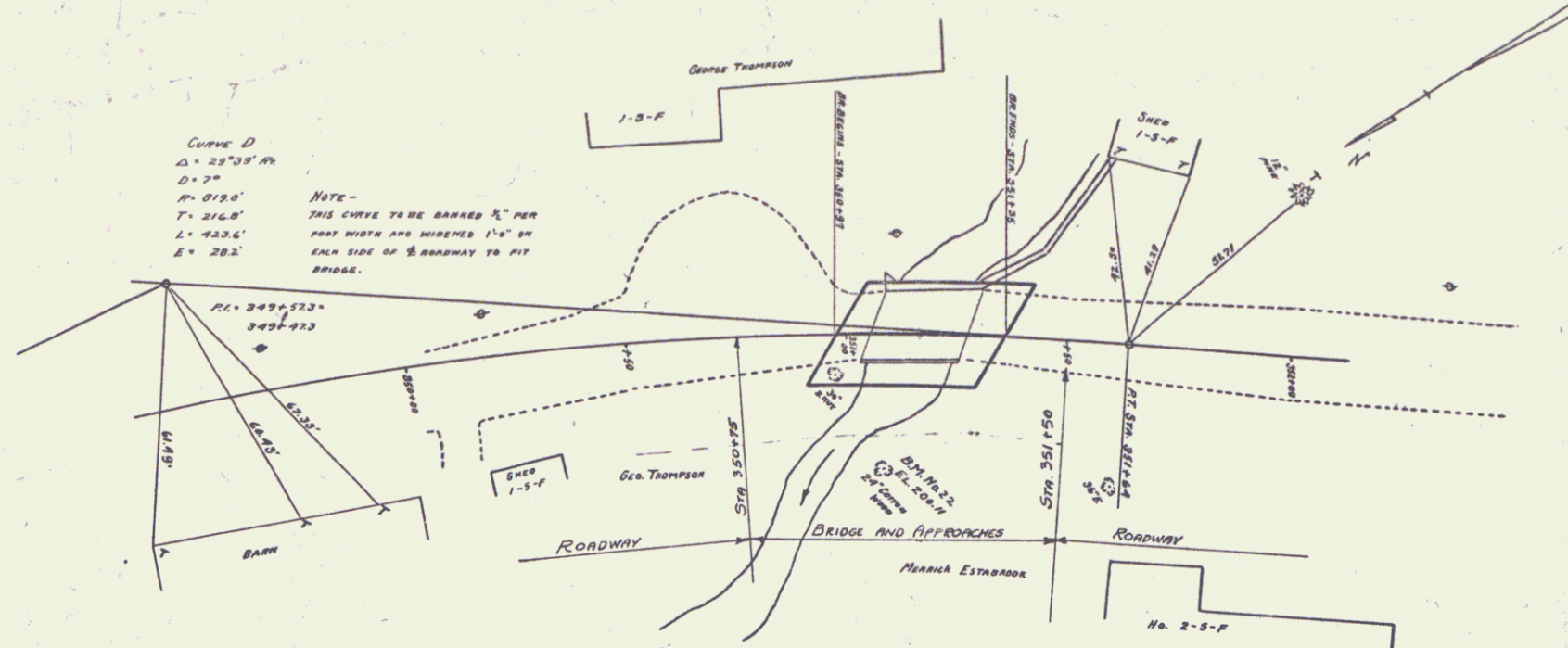


Parcel	Kind of Instrument	Date of Instrument	Grantor	Grantee	Recorded	Remarks
A-B	Q.C.D.	1-29-34	Wesley J. Mason	St of W.	27	263 2-134
A-C	Q.C.D.	1-29-34	Stella Wyman	"	27	263 2-134
A-D	Q.C.D.	1-29-34	G.E. Thompson	"	27	263 2-134

BM #21 SPIKE IN TRUNK OF 10" ELM 37 FT. OF STA 343+90 ELEV 203.07
 BM #22 SPIKE IN ROOT OF 18" BIRCHWOOD 30 FT. OF STA 351+00 ELEV 200.11

SERIES No 1015
 SHEET 3 OF 78

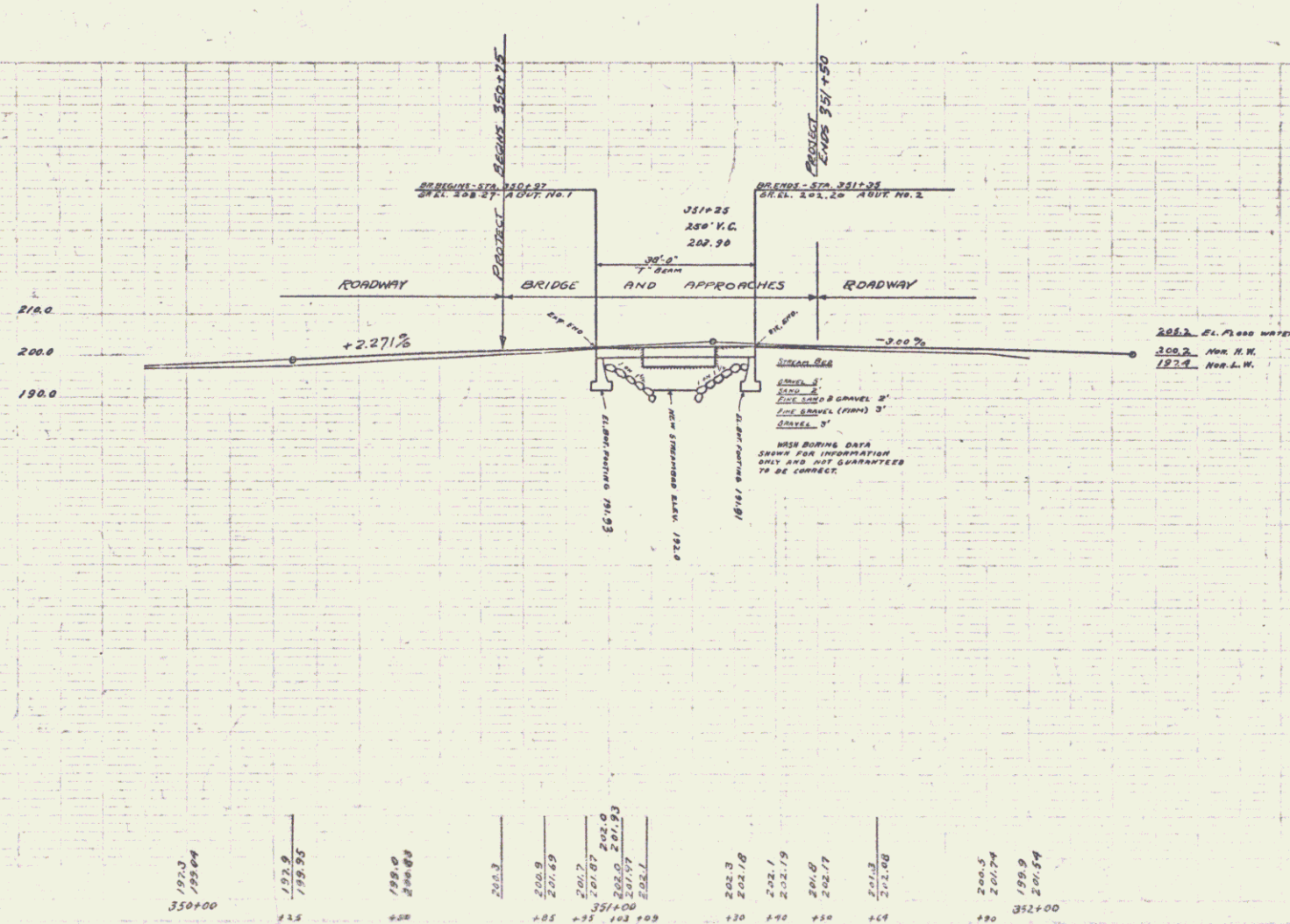
2



NOTE: - CHANNEL TO BE EXCAVATED AS DIRECTED BY THE ENGINEER FROM A POINT APPROXIMATELY 50' ABOVE BRIDGE TO APPROXIMATELY 150' BELOW BRIDGE. ALL NEW BANK SLOPES EXCAVATED TO BE REGRAPPED TO PROTECT SAME, AS DIRECTED BY THE ENGINEER.

Excess excavation on this project to be used as side fills STA 353 to STA 368 as directed by the Engineer.

THE LUMP SUM BID FOR TEMPORARY BRIDGE, MAINTAINING TRAFFIC, SHALL INCLUDE REMOVAL OF PRESENT SUPERSTRUCTURE.



- SHEETS TO BE USED**
- 2 - 3' x 6' 45" to 40" - 35' SPAN - MAINTAINED FOR 1" CURVE & 30" S&W - 5" UNIFORM SLAB THICKNESS AND BANKED 1/2" PER FOOT OF WIDTH.
 - 3 - ADJUSTMENT AND SUPERSTRUCTURE DETAILS
 - 4 - S. B. NO. 20 - TYPICAL DETAILS
 - 5 - S. B. NO. 5 - CABLE RAIL
 - 6 - S. B. NO. 11 - BARRICADES ETC.
 - 7 - S. B. NO. 30 - STANDARD STRUCTURES

ESTIMATED QUANTITIES

ITEM NO 18 CHANNEL EXCAVATION	500	CU YDS.
15 STRUCTURE EXCAVATION	196	" "
33A CONCRETE CLASS A	45	" "
33 C " " G	39	" "
34 REINFORCING STEEL	14,710	LBS
35 TEMPORARY BRIDGE, MAINTAIN TRAFFIC	1	L-SUM
62 RIP RAP FOR BANK PROTECTION	39	CU YDS.
67A CABLE GUARD RAIL	140	LINEAL FT.
74B GROUTED DOUBLE GUTTER	20	SAKES
47A ANCHORS FOR CABLE GUARD RAIL	4	EACH
12B SUBBASE OF GRAVEL	35	CU YDS.
20 GRAVEL SURFACE COURSE	20	" "
1041 COMMON EXCAV. INCL. BORING	11	" "

APPROVED

 COMMISSIONER
 CORRECT
 A. D. S. [Signature]
 BRIDGE ENGINEER

BRIDGE OVER LITTLE STONY BROOK
 STOCKBRIDGE, VT.
 101-31
 Sheet 9A

