

**INDEX OF SHEETS**

SHEET NO.	TITLE PAGE
1	TITLE PAGE
2-3	PLAN (1" = 20')
4-5	PROFILE (1" = 20')
6	TYPICAL CROSS-SECTION OF IMPROVEMENT
7	BANKING AND SHOULDER TRANSITIONS
8	EARTHWORK SHEET
9	QUANTITY SHEET (ITEMS)
10	BRIDGE QUANTITY SHEET
11	GENERAL PLAN AND ELEVATION
12	SPAN NO. 1 AND TYPICAL SECTION
13	SPAN NO. 2 AND BEAM SECTION
14	SPAN NO. 3 AND DETAILS
15	DETAILS OF ABUTMENT NO. 1
16	DETAILS OF ABUTMENT NO. 2
17	DETAILS OF PIERS NO. 1 AND NO. 2
18	REINFORCING DETAILS OF PIERS
19-20	REINFORCING SCHEDULE
21	CHANNEL SECTIONS
22-24	ROADWAY SECTIONS
25	SB-2 TYPICAL DETAILS "I" AND "L" BEAM BRIDGES
26	SB-3 STANDARD CABLE RAIL AND CURB
27	B-5 TYPICAL SLOPE GRADING
28	D-8 REINF. CONC. D.I. WITH PRECAST COVER
29	G-25 TWO CABLE GUARD (DEAD END ANCHORAGE)
30	G-28 TWO CABLE GUARD (DEAD END ANCHORAGE)
31	E-2 BARRICADES, SIGNS AND LIGHTS (BRIDGE)

**STATE OF VERMONT  
DEPARTMENT OF HIGHWAYS**

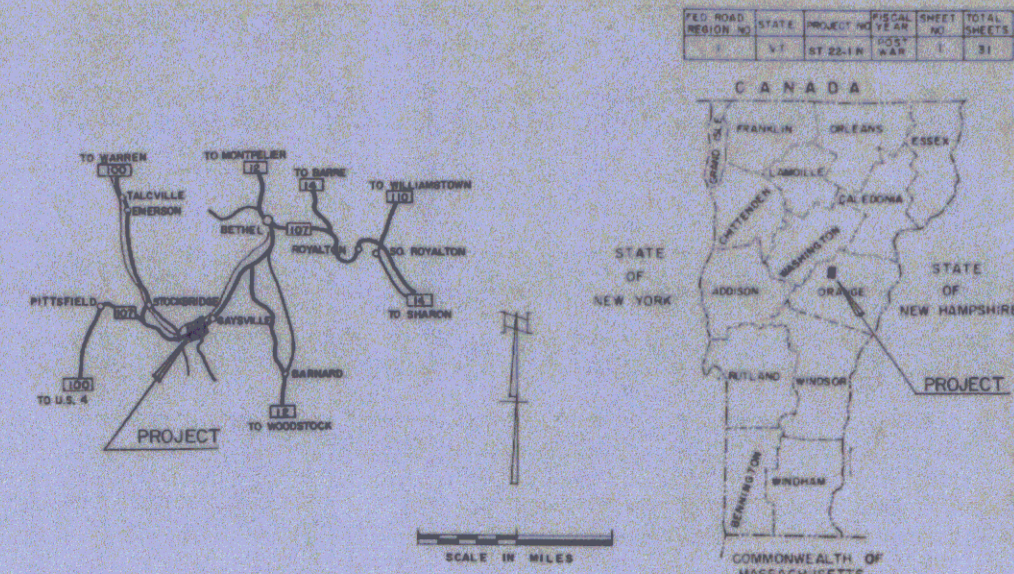
**PROPOSED IMPROVEMENT**

**TOWN OF STOCKBRIDGE**

**COUNTY OF WINDSOR**

**VERMONT ROUTE 107**

**BETHEL-RUTLAND ROAD**



**PROJECT NAME & NUMBER TYPE PAVEMENT AREA**  
**STOCKBRIDGE ST 22-1-N BIT. CONC. PAVT. 1214 S.Y.**

**RECORD PLANS**  
**MATERIALS**

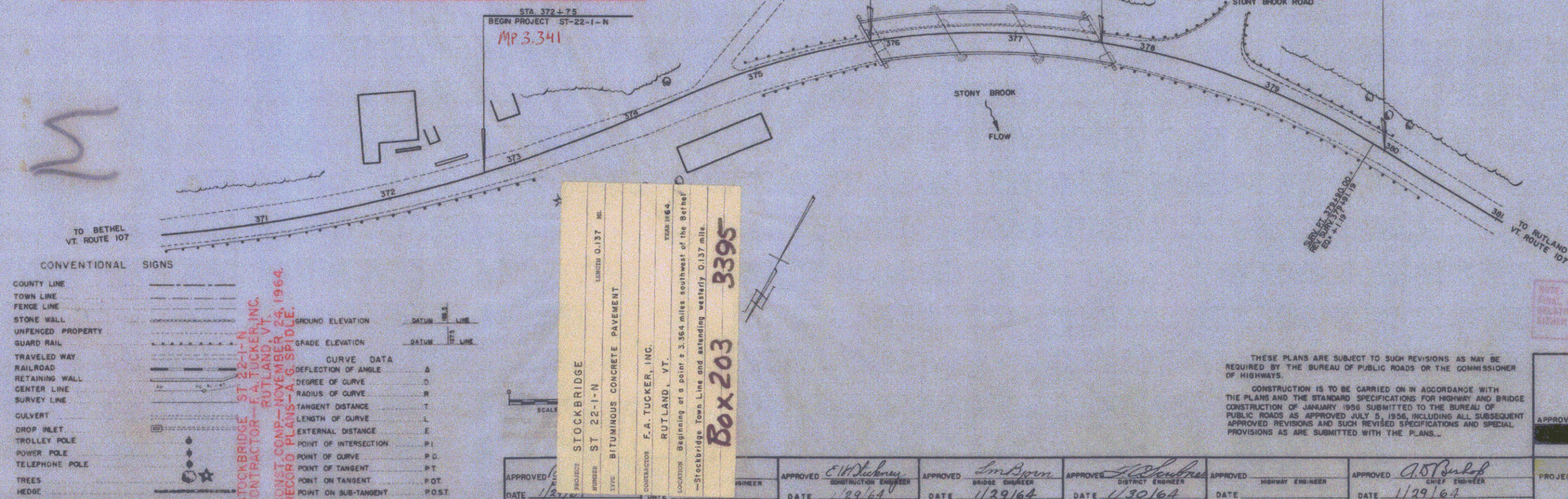
SUBBASE OF GRAVEL—BLACKMAN PIT & THOMPSON PIT—STOCKBRIDGE, VT.  
 GRAVEL SHOULDERS—TOWN OF STOCKBRIDGE PIT—STOCKBRIDGE, VT.  
 CUTBACK ASPHALT—MOBIL OIL CO.—ALBANY, N.Y.  
 TAR EMULSION—BORDEN CHEMICAL CO.—NEW YORK, N.Y.  
 BITUMINOUS CONCRETE PAVEMENT—L.M. PIKE & SON, INC. (PLANT)—FLORENCE, VT.  
 JOINT SEALER—HOT POURED—SERVICISED PRODUCTS CORP.—NO. BERGEN, N.J.  
 CONCRETE CLASS AA & B—D & D CONCRETE—RANDOLPH, VT.  
 REINFORCING STEEL—REPUBLIC STEEL CORP.—BUFFALO, N.Y.  
 ASPHALT COATED CORRUGATED GALVANIZED METAL PIPE—NORTHEASTERN  
 CULVERT CORP.—WESTMINSTER, VT.  
 WOOD GUIDE POSTS—S.T. GRISWOLD & CO., INC.—ESSEX JUNCTION, VT.

CONTRACTOR—F.A. TUCKER, INC.  
 RUTLAND, VT.  
 RESIDENT ENGINEER—JOSHUA W. DAVIS.  
 INSPECTOR—JAMES E. WILMOT.  
 RECORD PLANS—A. G. SPIDLE.

CONTRACT!  
 DATED—FEBRUARY 19, 1964.  
 STARTED—MARCH 2, 1964.  
 COMPLETED—NOVEMBER 24, 1964.  
 ACCEPTED—NOVEMBER 24, 1964.

BEGINNING AT A POINT APPROXIMATELY 3.364 MILES  
 SOUTHWEST OF THE BETHEL-STOCKBRIDGE TOWN LINE  
 AND EXTENDING WESTERLY 0.137 MILE

LENGTH OF ROADWAY 548.0 FEET = 0.104 MILE  
 LENGTH OF BRIDGE 177.0 FEET = 0.033 MILE  
 LENGTH OF PROJECT 725.0 FEET = 0.137 MILE



**CONVENTIONAL SIGNS**

SYMBOL	DESCRIPTION
---	COUNTY LINE
---	TOWN LINE
---	FENCE LINE
---	STONE WALL
---	UNFENCED PROPERTY
---	GUARD RAIL
---	TRAVELED WAY
---	RAILROAD
---	RETAINING WALL
---	CENTER LINE
---	SURVEY LINE
---	CULVERT
---	DROP INLET
---	TROLLEY POLE
---	POWER POLE
---	TELEPHONE POLE
---	TREES
---	HEDGE

GROUND ELEVATION DATA LINE  
 GRADE ELEVATION DATA LINE  
 CURVE DATA  
 DEFLECTION OF ANGLE Δ  
 DEGREE OF CURVE D  
 RADIUS OF CURVE R  
 TANGENT DISTANCE T  
 LENGTH OF CURVE L  
 EXTERNAL DISTANCE E  
 POINT OF INTERSECTION P.I.  
 POINT OF CURVE P.C.  
 POINT OF TANGENT P.T.  
 POINT ON TANGENT P.O.T.  
 POINT ON SUB-TANGENT POST

STOCKBRIDGE  
 PROJECT ST 22-1-N  
 LENGTH 0.137 MI.  
 BITUMINOUS CONCRETE PAVEMENT  
 CONTRACTOR F.A. TUCKER, INC.  
 RUTLAND, VT.  
 Box 203 3395

Location: Beginning at a point 3.364 miles southwest of the Bethel-Rutland Town Line and extending westerly 0.137 mile.

THESE PLANS ARE SUBJECT TO SUCH REVISIONS AS MAY BE  
 REQUIRED BY THE BUREAU OF PUBLIC ROADS OR THE COMMISSIONER  
 OF HIGHWAYS.

CONSTRUCTION IS TO BE CARRIED ON IN ACCORDANCE WITH  
 THE PLANS AND THE STANDARD SPECIFICATIONS FOR HIGHWAY AND BRIDGE  
 CONSTRUCTION OF JANUARY 1956 SUBMITTED TO THE BUREAU OF  
 PUBLIC ROADS AS APPROVED JULY 5, 1956, INCLUDING ALL SUBSEQUENT  
 APPROVED REVISIONS AND SUCH REVISED SPECIFICATIONS AND SPECIAL  
 PROVISIONS AS ARE SUBMITTED WITH THE PLANS.

NOTE: ANY FURTHER INFORMATION CONCERNING  
 THESE PLANS SHOULD BE OBTAINED FROM THE  
 ENGINEER OR THE DISTRICT ENGINEER.  
 SIGNATURE AND SEAL OF THE ENGINEER

DEPARTMENT OF COMMERCE  
 BUREAU OF PUBLIC ROADS

Pin# 00R008

APPROVED \_\_\_\_\_

DIVISION ENGINEER DATE \_\_\_\_\_

PROJECT ST. NO. 22-1-N

SHEET 1 OF 31 SHEETS

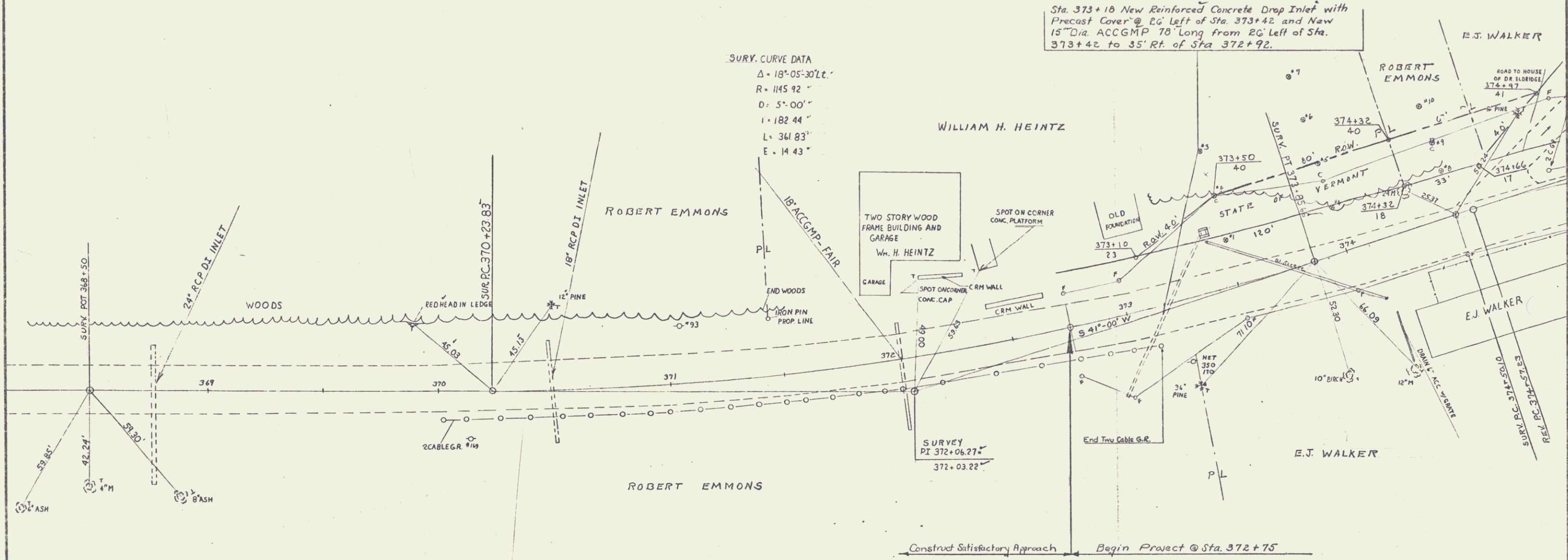
APPROVED DATE 1/29/64	APPROVED DATE 1/29/64	APPROVED DATE 1/30/64	APPROVED DATE 1/29/64
--------------------------	--------------------------	--------------------------	--------------------------



Removing and Resetting Two Cable Guard Rail, Mod.  
 Rt.  
 372+72-373+12

Sta. 373+16 New Reinforced Concrete Drop Inlet with  
 Precast Cover @ 20' Left of Sta. 373+42 and New  
 15" Dia. ACCGMP 78' Long from 20' Left of Sta.  
 373+42 to 35' Rt. of Sta. 372+92.

SURY. CURVE DATA  
 $\Delta = 18^{\circ}05'30''$   
 $R = 1145.92'$   
 $D = 5^{\circ}00'$   
 $L = 182.44'$   
 $E = 361.83'$   
 $E = 14.43'$



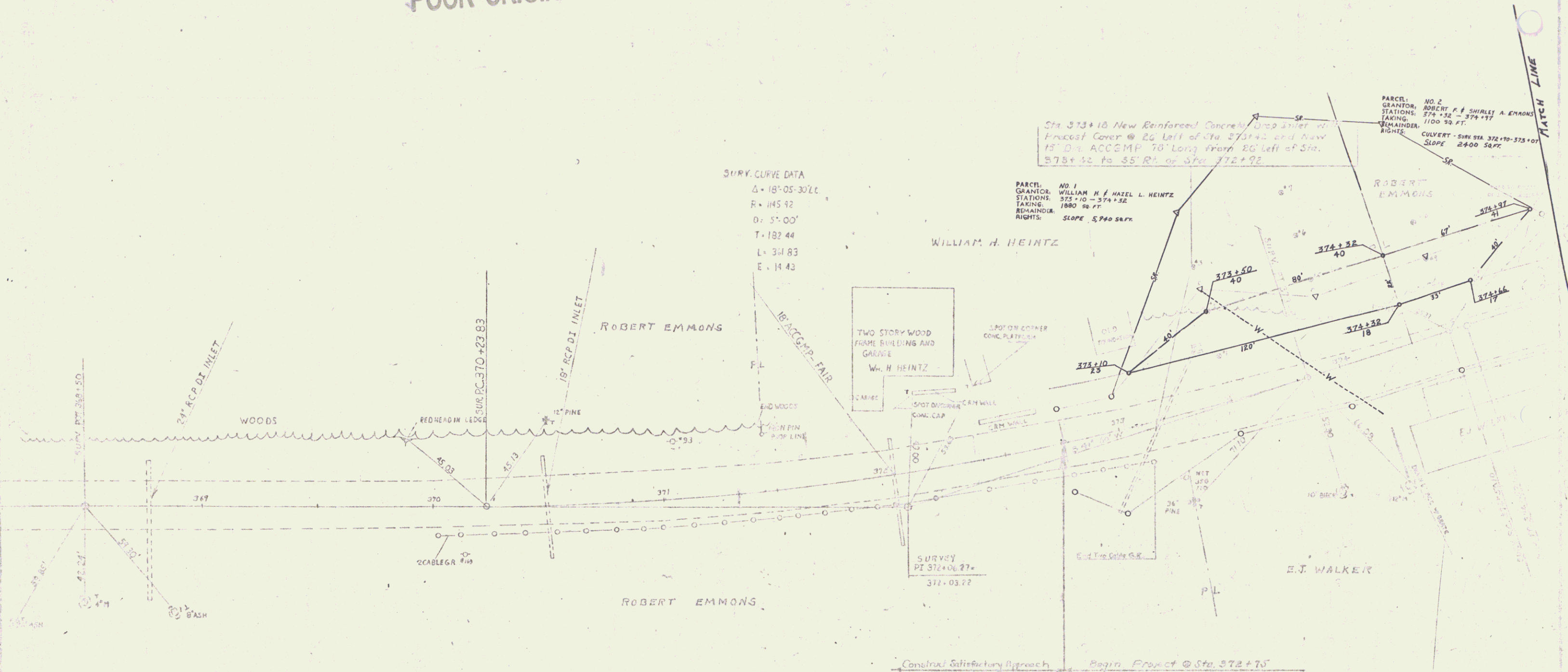
Construct Satisfactory Approach      Begin Project @ Sta. 372+75



STOCKBRIDGE  
 STONY BROOK BRIDGE  
 VT. ROUTE 107  
 PROJECT NO. ST 22-1-N  
 DRAWN BY L.F.S.  
 CHECKED BY W.M.S.  
 BR 2 of 24

POOR ORIGINAL COPY

Removing and Re-setting Two Cable Guard Rail, Med.  
Rt.  
372+72-373+12



SURV. CURVE DATA  
 $\Delta = 18^{\circ}05'30''$   
 $R = 145.92$   
 $D = 51.00'$   
 $T = 182.44$   
 $L = 344.83$   
 $E = 14.43$

Sta 373+10 New Reinforced Concrete Drop Inlet w/ Precast Cover @ 20' left of Sta 273+40 and New 15" D. ACCOMP 70' Long from 20' left of Sta. 373+32 to 35' R. of Sta. 372+92

PARCEL NO. 1  
 GRANTEE: WILLIAM H. & HELEN L. HEINTZ  
 STATIONS: 371+10 - 374+32  
 TAKING: 1880 sq. ft.  
 REMAINDER: RIGHTS: SLOPE 5.740 S. 40%

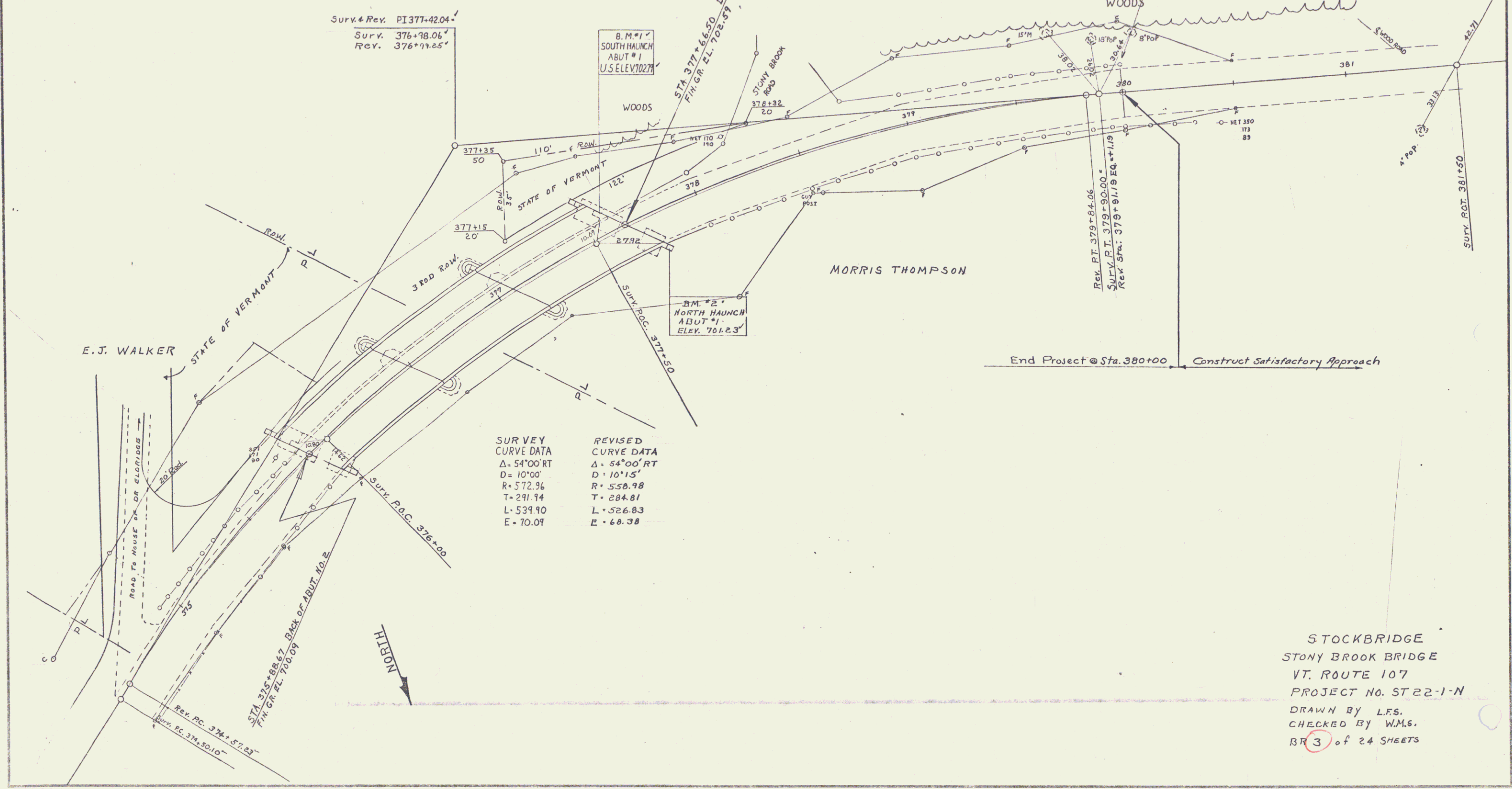
PARCEL NO. 2  
 GRANTEE: ROBERT F. & SHIRLEY A. EMMONS  
 STATIONS: 374+32 - 378+12  
 TAKING: 1100 sq. ft.  
 REMAINDER: RIGHTS: SLOPE 2.400 S. 40%

STOCKBRIDGE  
 STONY BROOK BRIDGE  
 VT. ROUTE 107  
 PROJECT No. ST 22-10  
 DRAWN BY LES  
 CHECKED BY W.S.  
 (2A)  
 SCALE 1" = 30'

4

Item 549-A Removing + Resetting  
Two Cable Guard Rail.

Left	Right
Sta. 373+00 to Sta. 375+00	Sta. 374+78 to Sta. 373+48
Sta. 377+60 to Sta. 378+24	Sta. 375+32 to Sta. 375+96
Sta. 379+74 to Sta. 380+00	Sta. 377+74 to Sta. 380+00



Surv. & Rev. PI 377+42.04  
Surv. 376+78.06  
Rev. 376+77.25

B.M. #1  
SOUTH HAUNCH  
ABUT #1  
U.S. ELEV. 702.77

B.M. #2  
NORTH HAUNCH  
ABUT #1  
ELEV. 701.23

SURVEY	REVISED
CURVE DATA	CURVE DATA
Δ = 54°00'RT	Δ = 54°00'RT
D = 10°00'	D = 10°15'
R = 572.96	R = 558.98
T = 291.14	T = 284.81
L = 539.90	L = 526.83
E = 70.09	E = 68.38

End Project @ Sta. 380+00 Construct Satisfactory Approach

STOCKBRIDGE  
STONY BROOK BRIDGE  
VT. ROUTE 107  
PROJECT NO. ST 22-1-N  
DRAWN BY L.F.S.  
CHECKED BY W.M.S.  
BR 3 of 24 SHEETS

POOR ORIGINAL COPY

From S.D.A. Elevation & Position  
Two Gate Guns (wall)  
Left Right  
Sta. 374+52 to Sta. 377+38 Sta. 376+72 to Sta. 373+42  
Sta. 377+60 to Sta. 379+24 Sta. 375+32 to Sta. 375+96  
Sta. 379+72 to Sta. 380+00 Sta. 377+76 to Sta. 380+00

PARCEL NO. 4  
GRANTOR: MAURICE A & LOUISE J. THOMPSON  
STATIONS: 377+15 - 378+32  
TAKING: 1800 SQ. FT.  
REMAINDER:  
RIGHTS:

Survey Rev. PI 377+42.04  
Survey 376+76.06  
Rev. 376+74.65

B.M. #1  
SOUTH BURNETT  
ASUTRI  
U.S. ELEVATION

STATION  
MARKER  
ASUTRI  
ELEV. 714.2

PARCEL NO. 3  
GRANTOR: ELVIN & MARIE D. WALKER  
STATIONS:  
TAKING:  
REMAINDER:  
RIGHTS: WATER LINE CROSSING - 373+50 - 374+10

E. J. WALKER

SURVEY CURVE DATA  
Δ = 54°00' RT  
D = 10.00  
R = 572.26  
T = 241.14  
L = 531.90  
E = 70.01

REVISED CURVE DATA  
Δ = 54°00' RT  
D = 10.015'  
R = 568.08  
T = 241.01  
L = 528.63  
E = 68.08

End Project @ Sta. 380+00 Construct Satisfactory Approach

STOCKBRIDGE  
STONY BROOK BRIDGE  
VT. ROUTE 107  
PROJECT NO. ST 22-1-H  
CHECKED BY W.M.S.  
BY SA OF 24 SHEETS