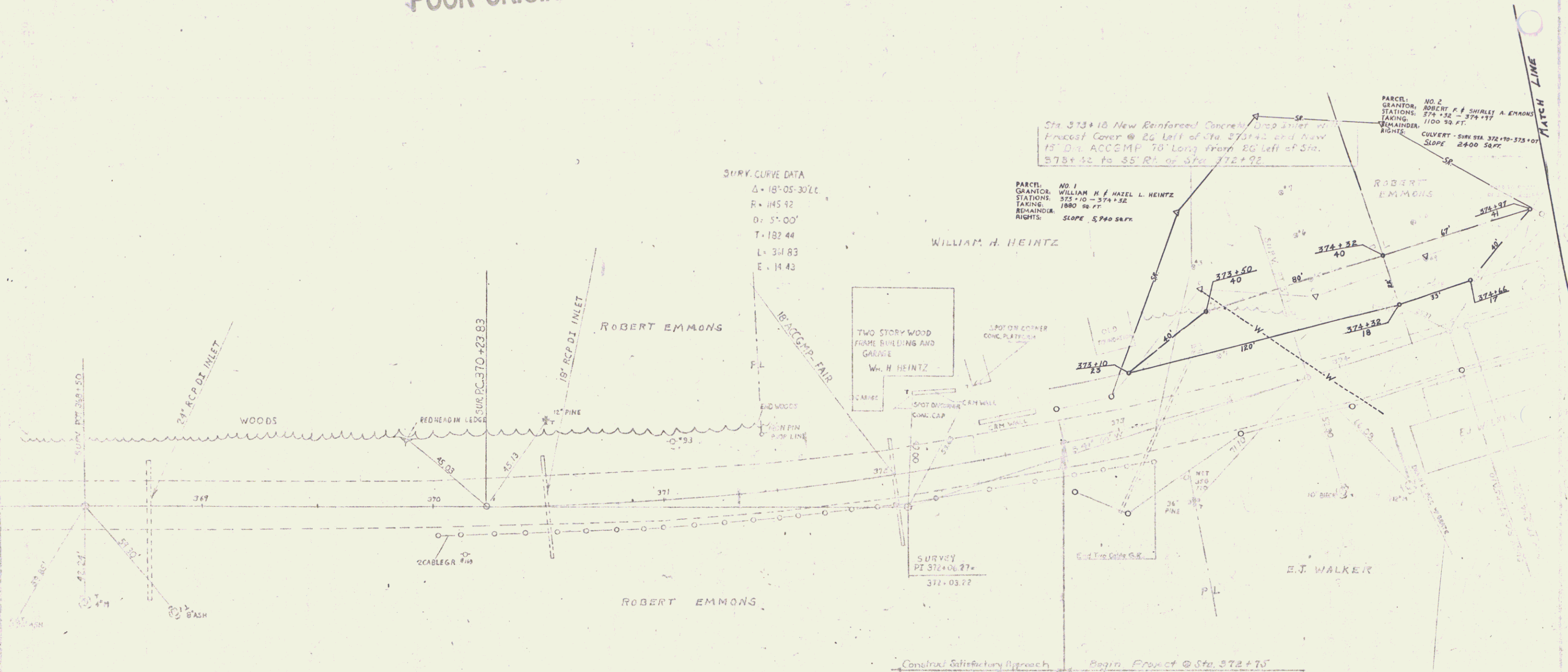


POOR ORIGINAL COPY

Removing and Re-setting Two Cable Guard Rail, Med.
Rt.
372+72-373+12



SURV. CURVE DATA
 $\Delta = 18^{\circ}05'30''$
 $R = 145.92$
 $D = 51.00'$
 $T = 182.44$
 $L = 344.83$
 $E = 14.43$

Sta 373+10 New Reinforced Concrete Drop Inlet w/ Precast Cover @ 20' left of Sta 273+40 and New 15" D. ACCOMP 70' Long from 20' left of Sta. 373+32 to 35' Rt. of Sta. 372+92

PARCEL NO. 1
 GRANTEE: WILLIAM H. & HELEN L. HEINTZ
 STATIONS: 371+10 - 374+32
 TAKING: 1880 96 FT.
 REMAINDER: RIGHTS: SLOPE 5.740 S.W.

PARCEL NO. 2
 GRANTEE: ROBERT F. & SHIRLEY A. EMMONS
 STATIONS: 374+32 - 378+12
 TAKING: 1100 90 FT.
 REMAINDER: RIGHTS: SLOPE 2.400 S.W.

STOCKBRIDGE
 STONY BROOK BRIDGE
 VT ROUTE 107
 PROJECT No. ST 22-10
 DRAWN BY LES
 CHECKED BY W.S.
 (2A)
 SCALE 1" = 30'

4