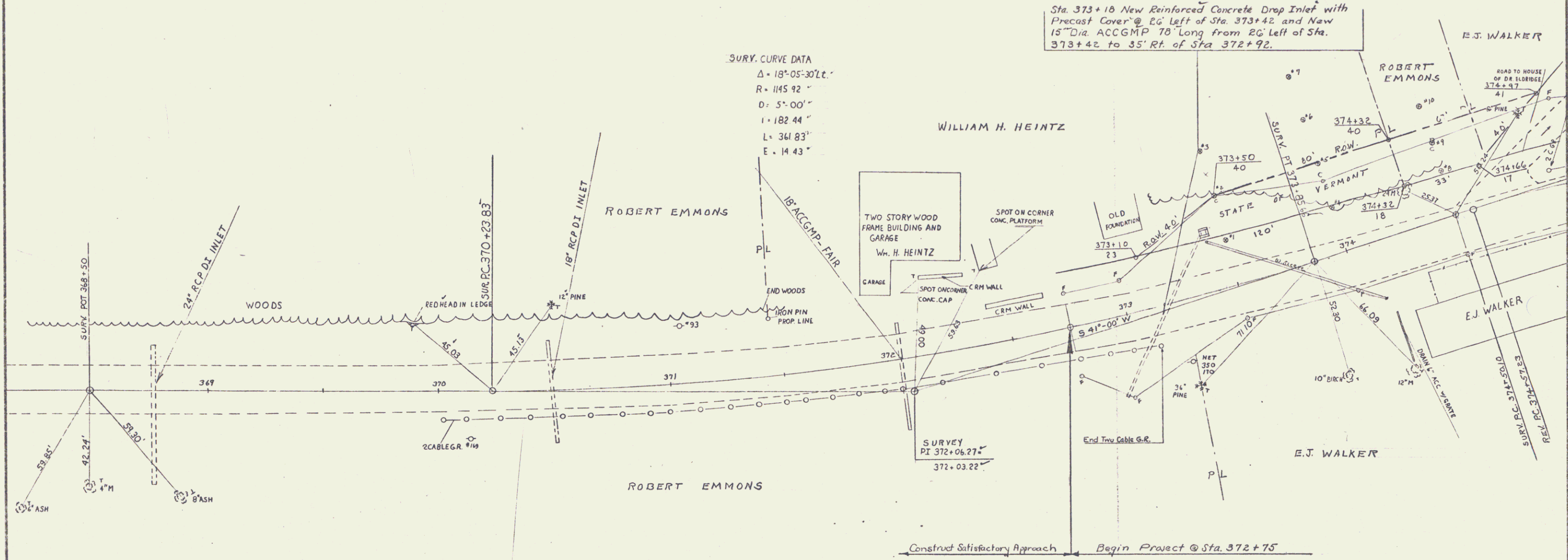


Removing and Resetting Two Cable Guard Rail, Mod.  
 Rt.  
 372+72-373+12

Sta. 373+16 New Reinforced Concrete Drop Inlet with  
 Precast Cover @ 20' Left of Sta. 373+42 and New  
 15" Dia. ACCGMP 78' Long from 20' Left of Sta.  
 373+42 to 35' Rt. of Sta. 372+92.

SURY. CURVE DATA  
 $\Delta = 18^{\circ}05'30''$   
 $R = 1145.92'$   
 $D = 5^{\circ}00'$   
 $L = 182.44'$   
 $E = 361.83'$   
 $E = 14.43'$



Construct Satisfactory Approach      Begin Project @ Sta. 372+75



STOCKBRIDGE  
 STONY BROOK BRIDGE  
 VT. ROUTE 107  
 PROJECT NO. ST 22-1-N  
 DRAWN BY L.F.S.  
 CHECKED BY W.M.S.  
 BR 2 of 24